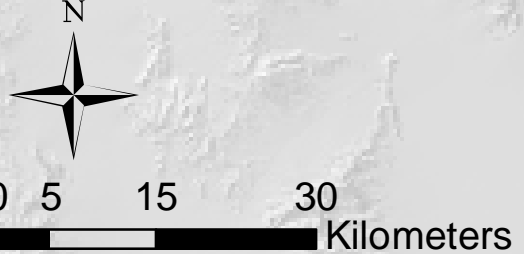
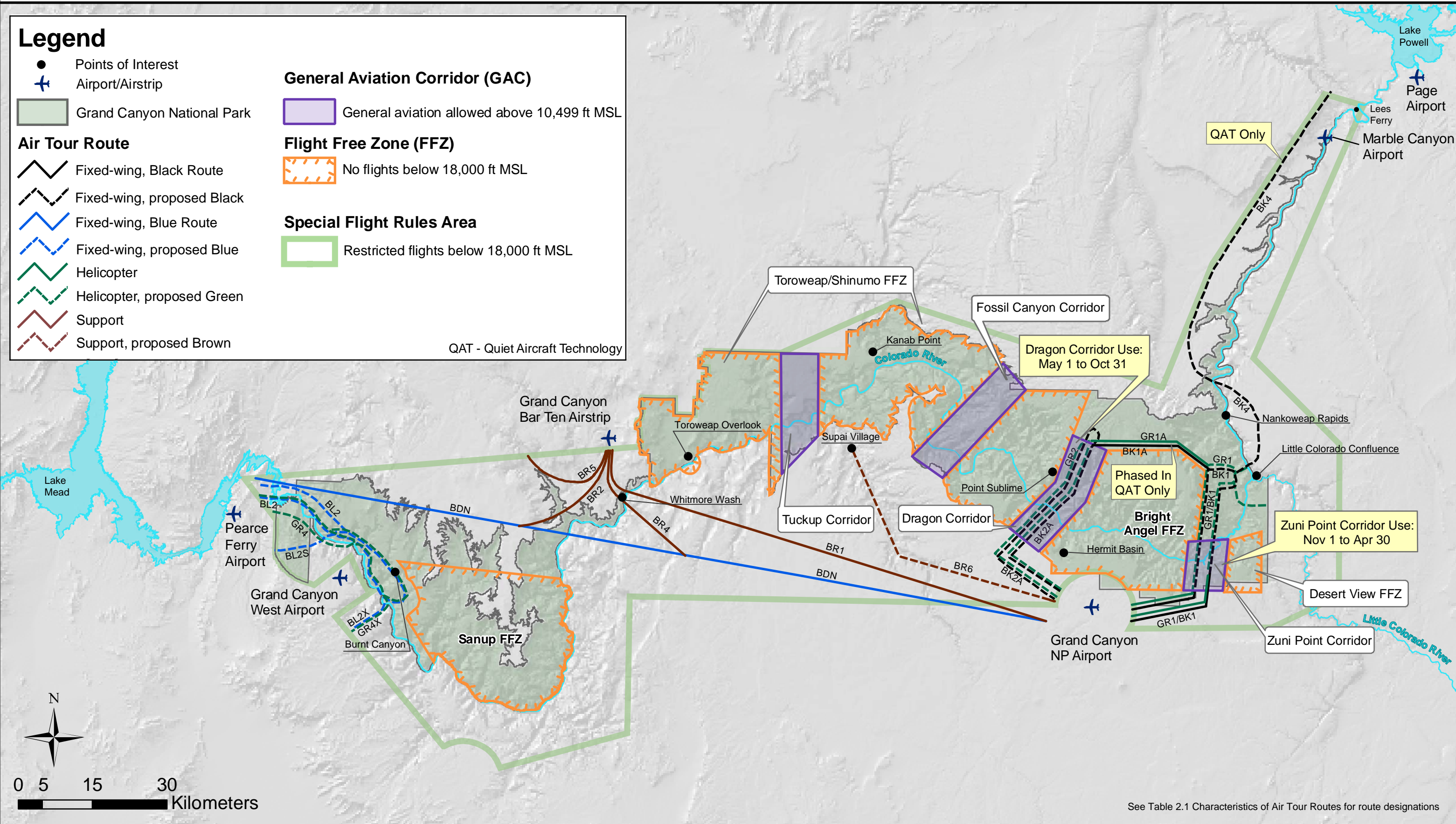


# The NPS Preferred Alternative

## Legend

- Points of Interest
- ✈ Airport/Airstrip
- ▭ Grand Canyon National Park
- Air Tour Route**
  - Fixed-wing, Black Route
  - - Fixed-wing, proposed Black
  - Fixed-wing, Blue Route
  - - Fixed-wing, proposed Blue
  - Helicopter
  - - Helicopter, proposed Green
  - Support
  - - Support, proposed Brown
- General Aviation Corridor (GAC)**
  - ▭ General aviation allowed above 10,499 ft MSL
- Flight Free Zone (FFZ)**
  - ▭ No flights below 18,000 ft MSL
- Special Flight Rules Area**
  - ▭ Restricted flights below 18,000 ft MSL

QAT - Quiet Aircraft Technology



See Table 2.1 Characteristics of Air Tour Routes for route designations