

APPENDIX A - FIGURES

FIGURES

Figure 1 – Site Location.....	2
Figure 2 - Exposed drainage piping and unstable slope embankment looking southwest.....	3
Figure 3 - Exposed drainage piping and unstable slope embankment looking northeast. Soil piles in wooded area at bottom of embankment.	3
Figure 4 – USGS Topographic Quadrangle for Washington, DC; photo revised 1981 4	
Figure 5 – Location of Reservoirs No. 1 and No.2, and the Embankment Failure.....	5
Figure 6 – Fort Circle Parks Management Zones	6
Figure 7 – Project Area	7
Figure 8 – Project Limits	8
Figure 9 – Rendering of Slope Stabilization.....	9
Figure 10 – Transfer of Jurisdictional Boundary	10
Figure 11 – Soils	11
Figure 12 – Viewshed Analysis	11

Figure 1 – Site Location

Figure 2 - Exposed drainage piping and unstable slope embankment looking southwest.



Figure 3 - Exposed drainage piping and unstable slope embankment looking northeast. Soil piles in wooded area at bottom of embankment.



Figure 4 – USGS Topographic Quadrangle for Washington, DC; photo revised 1981

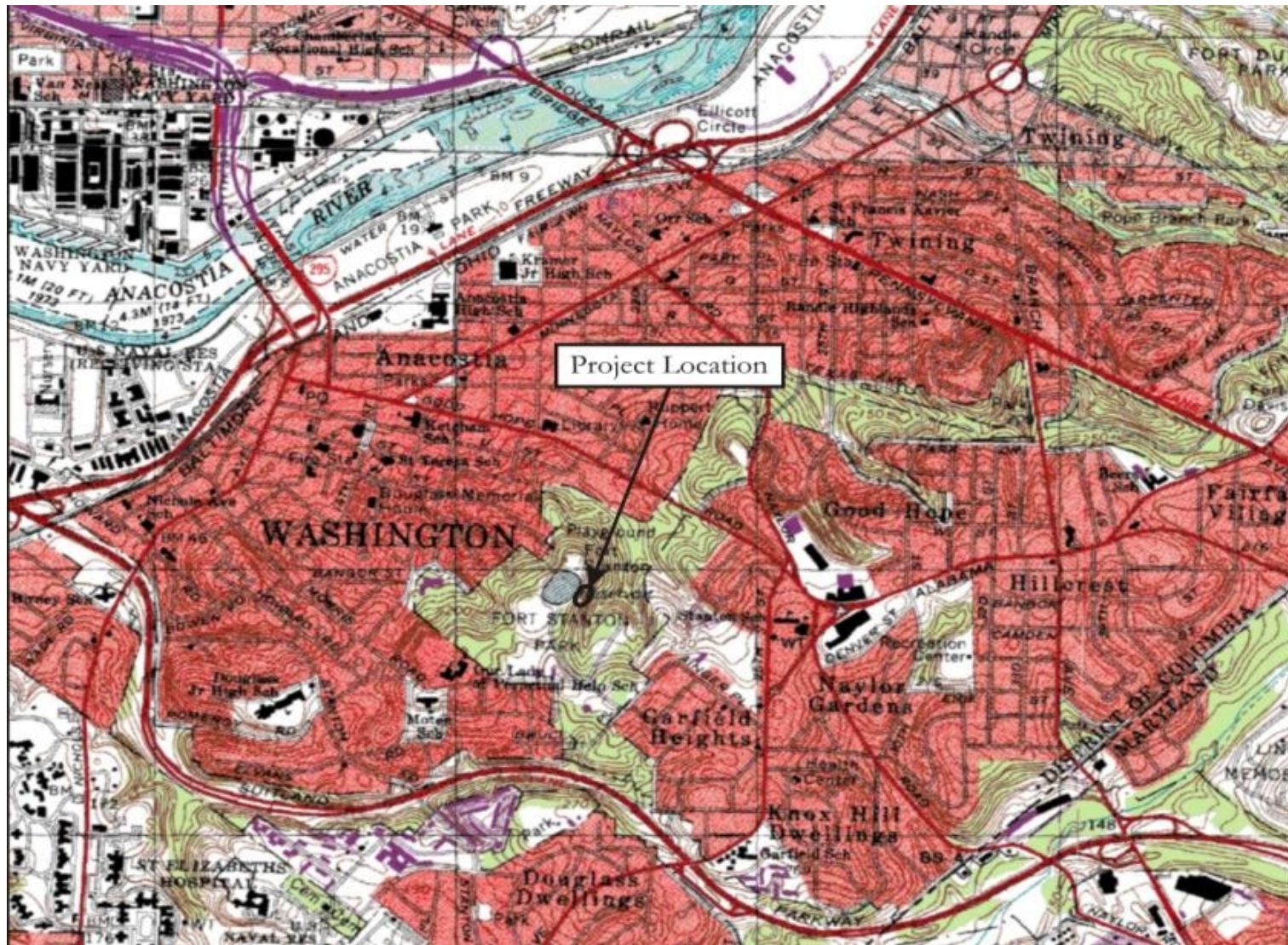


Figure 5 – Location of Reservoirs No. 1 and No.2, and the Embankment Failure.

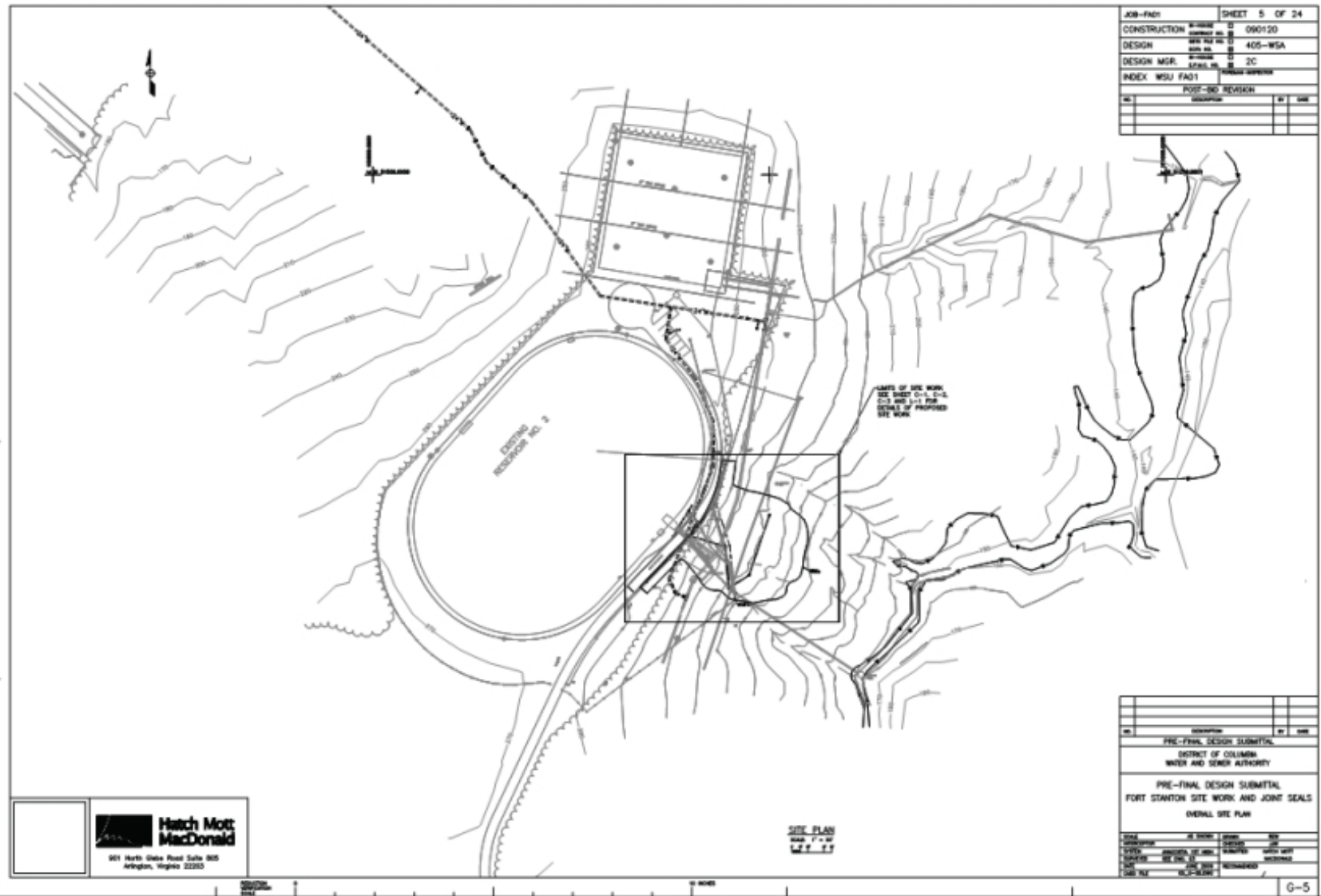
Failure



Figure 6 – Fort Circle Parks Management Zones



Figure 7 – Project Area



[illegible]

Figure 9 – Rendering of Slope Stabilization

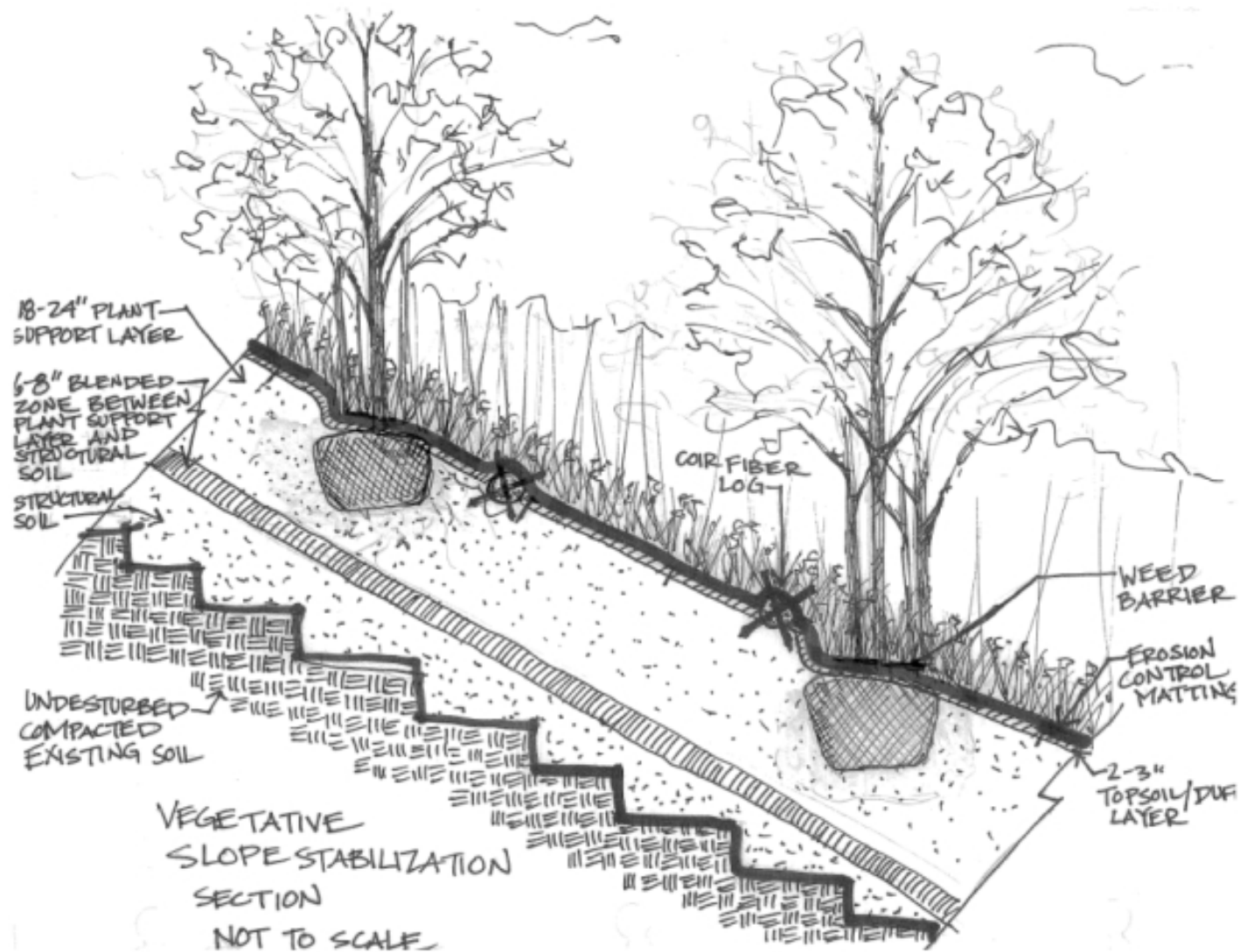


Figure 10 – Transfer of Jurisdictional Boundary



**DISTRICT OF COLUMBIA WATER AND SEWER AUTHORITY
FORT STANTON RESERVOIRS NO. 1 & NO. 2
TRANSFER OF JURISDICTIONAL BOUNDARIES**



Figure 11 – Soils



Map Unit Symbol	Map Unit Name
BdB	Beltsville silt loam, 0 to 8 percent slopes
CcC	Chillum silt loam, 8 to 15 percent slopes
CdC	Chillum-Urban land complex, 8 to 15 percent slopes
CeC	Christiana silt loam, 8 to 15 percent slopes
CfC	Christiana-Urban land complex, 8 to 15 percent slopes
CwC	Croom very gravelly sandy loam, 8 to 15 percent slopes
CwD	Croom very gravelly sandy loam, 15 to 40 percent slopes
CxC	Croom-Urban land complex, 8 to 15 percent slopes
CxD	Croom-Urban land complex, 15 to 25 percent slopes
Ik	Iuka sandy loam
MvC	Muirkirk variant complex, 8 to 15 percent slopes
MvD	Muirkirk variant complex, 15 to 40 percent slopes
ScD	Sassafras gravelly sandy loam, 15 to 40 percent slopes
U1	Udorthents
U2	Udorthents, gravelly
U5	Udorthents, clayey
Ub	Urban land
UeB	Urban land-Chillum complex, 0 to 8 percent slopes
UfC	Urban land-Christiana complex, 8 to 15 percent slopes
WpB	Woodstown-Urban land complex, 0 to 8 percent slopes

Figure 12 – Viewshed Analysis

