

Scotts Bluff National Monument
Oregon Trail Ruts Landscape Study
and Environmental Assessment ■ 100% Report

595 **Character Area C**

596 Character Area C is located to the east of Character Area A, near the visitor center.
597 Emigrant trails are generally not visible in this area, due to the impacts of several phases of
598 road construction, realignment and widening associated with the county road Old Oregon
599 Trail.

600 **Existing Condition**

- 601 ▪ The topography within this area is primarily flat with a few small depressions and
602 ridges.
- 603 ▪ Views to the east are open with little topography visible. Mitchell Pass, Scotts Bluff
604 and South Bluff are visible to the west.
- 605 ▪ County road Old Oregon Trail has covered significant sections emigrant trail
606 resources in this character area. Indistinct trail rut resources are located both north
607 and south of the county road county road Old Oregon Trail and others have been
608 covered by road construction.
- 609 ▪ Two locations of unidentified ruts/tracks are located within this area.
- 610 ▪ A bike trail extends east from the visitor center parking lot, generally parallel to and
611 north of the county road.
- 612 ▪ The only contemporary improvements have been the addition of the compatible
613 wooden trail markers.
- 614 ▪ The eastern red cedar plantings occur along portions of the unidentified ruts and are
615 non-contributing, compatible.

616 **Analysis**

617 **Trail Rut Resource**

- 618 ▪ The majority of the emigrant trail ruts in Character Area C are Class 5 (approximate
619 original trail). The location of the emigrant trail in these sections is only known
620 approximately from historic maps and photographs and is not visible. If the
621 resources are extant under the road (further investigation is needed) they would
622 contribute to the significance of the historic landscape.

623 **Visitor Experience**

- 624 ▪ Visitors enter the Monument from the east via the walking/biking trail in this area.

**Scotts Bluff National Monument
Oregon Trail Ruts Landscape Study
and Environmental Assessment ■ 100% Report**

- Visitors who visit this area have an opportunity to experience the approach of Mitchell Pass and the views Scotts Bluff and South Bluff in much the same way emigrants did.
- There is little visual evidence of emigrant trail ruts in this area thus hindering visitor understanding of how settlers reached Mitchell Pass.



Figure 3 - 39. Unidentified ruts with eastern red cedar plantings in Character Area C (2009)
(MBD DSC_0050.JPG)

**Scotts Bluff National Monument
Oregon Trail Ruts Landscape Study
and Environmental Assessment ■ 100% Report**



Figure 3 - 40. Unidentified ruts with Scotts Bluff and South Bluff (in background) in Character Area C (2009) (MBD DSC_0046.JPG)



Figure 3 - 41. North side of county road Old Oregon Trail looking west in Character Area C (2009) (MBD DSC_0058.JPG)

**Scotts Bluff National Monument
Oregon Trail Ruts Landscape Study
and Environmental Assessment ■ 100% Report**



Figure 3 - 42. North side of county road Old Oregon Trail looking east in Character Area C (2009) (MBD DSC_0061.JPG)



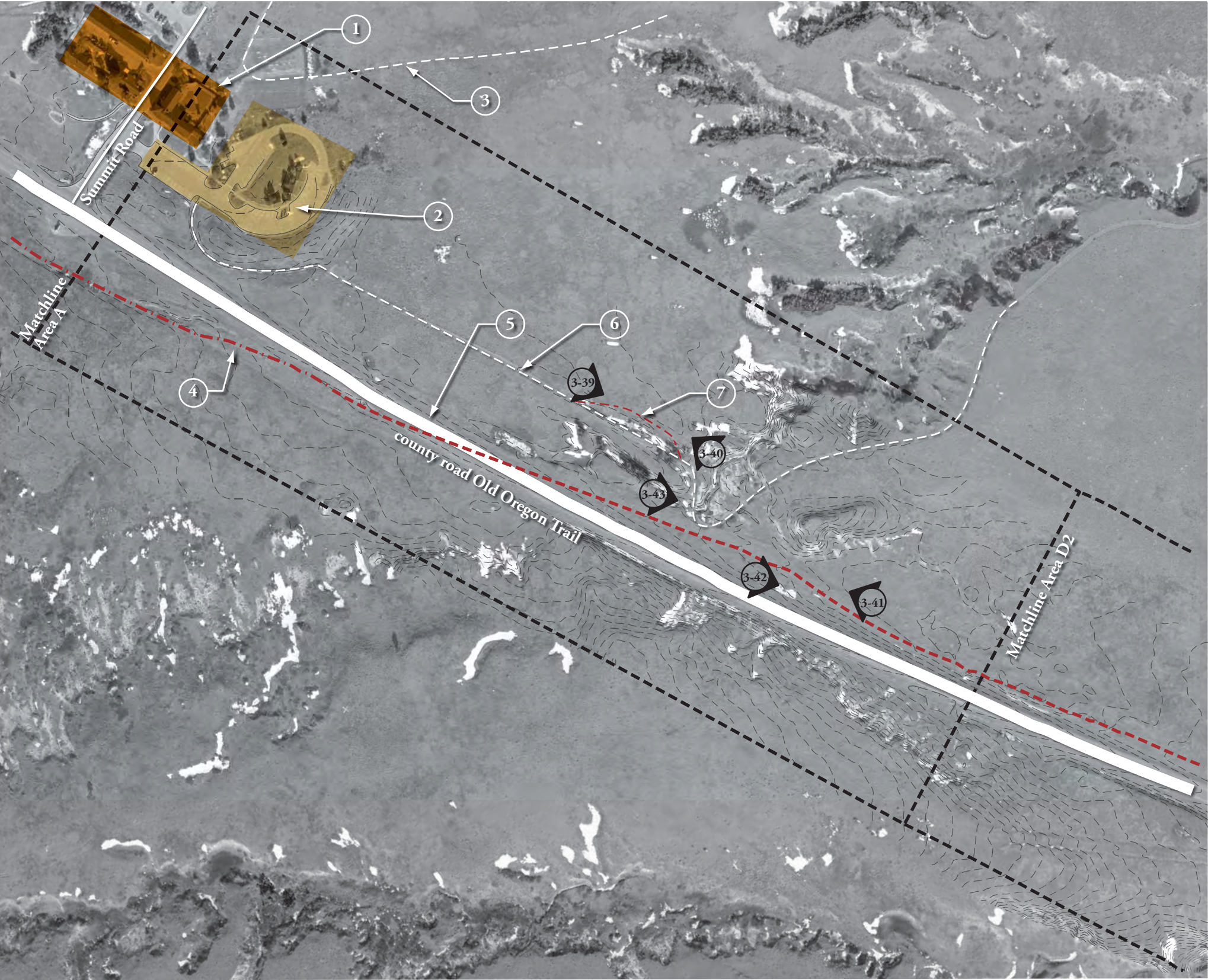
Figure 3 - 43. Asphalt bike trail in Character Area C looking east (2009) (MBD DSC_0061.JPG)

**Scotts Bluff National Monument
Oregon Trail Ruts Landscape Study
and Environmental Assessment ■ 100% Report**

Table 4: Character Area C - Small Scale Features

<i>Feature</i>	<i>Figure #</i>	<i>Description</i>	<i>Condition</i>	<i>Contributing/Non-contributing</i>
Boy Scout Trail Marker	3-24	Wood post with emblems indicating trail location of Oregon Trail/California Trail/Pony Express	Good	non-contributing compatible <i>outside period of significance</i>
Asphalt Trail	3-43	Asphalt bike trail	Good	non-contributing compatible <i>location does not detract from the historic landscape</i>

**Scotts Bluff National Monument
Oregon Trail Ruts Landscape Study
and Environmental Assessment ■ 100% Report**



Trail Classification

- Class 1 -
Unaltered Original Trail**
- Class 2 -
Used Original Trail**
- Class 3 -
Verified Original Trail**
- Class 4 -
Impacted Original Trail**
- Class 5 -
Approximate Original Trail**

Legend

- ① Visitor Center/ Administration Offices/ Maintenance Shop/ Employee Residence
- ② Parking
- ③ Saddle Rock Trail
- ④ Trail Ruts Location - Class 5 (Approximate Original Trail)
- ⑤ Trail Ruts Location - Class 5 (Under Road) (Approximate Original Trail)
- ⑥ Bike Trail
- ⑦ Unidentified Ruts/Tracks
- ▲₃₋₁ Photo Reference Figure #



FIGURE 3 - 44		TITLE OF PROJECT OREGON TRAIL RUTS LANDSCAPE STUDY ENVIRONMENTAL ASSESSMENT		
UNITED STATES DEPARTMENT OF THE INTERIOR		DRAWING TITLE CHARACTER AREA C - EXISTING CONDITIONS		
NATIONAL PARK SERVICE SCOTTS BLUFF NATIONAL MONUMENT		NAME OF PARK SCOTTS BLUFF NATIONAL MONUMENT		
REGION MIDWEST	COUNTY SCOTTS BLUFF	STATE NEBRASKA		

