



United States Department of the Interior
NATIONAL PARK SERVICE

Yosemite National Park
P. O. Box 577
Yosemite, California 95389

IN REPLY REFER TO:
L7615(YOSE-PM)

Memorandum

To: David Engelstad, Project Manager, Yosemite National Park

From: Superintendent, Yosemite National Park

Subject: NEPA and NHPA Clearance: 2009-029 Yosemite Valley Integrated Improvement Utilities Master Plan Phase 2B - North Pines Campground (28704)

The Leadership Team has reviewed the proposed project actions and completed its environmental assessment documentation, and we have determined that there:

- Will not be any effect on threatened, endangered, or rare species or their critical habitat.
- Will not be any effect on historical, cultural, or archeological resources.
- Will not be serious or long-term undesirable environmental or visual effects.

The proposed project, therefore, is now cleared for all NEPA and NHPA compliance requirements as presented above. Project plans and specifications are approved, and construction or project implementation can commence.

For the proposed project actions to be within compliance requirements during construction or project implementation, the following mitigations must be adhered to:

- Ensure that consultation with the park Archeologist is completed prior to ground disturbance; this includes detailed archeological monitoring necessary as part of data recovery plan to avoid adverse effects to significant archeological resources. Laura Kim, 379-1314.

//Don L. NEubacher//

Don L. Neubacher

Enclosure (with attachments)

cc: Statutory Compliance File

*The signed original of this document is on file at
the Environmental Planning and Compliance
Office in Yosemite National Park.*



Categorical Exclusion Form

Project: 2009-029 Yosemite Valley Integrated Improvement Utilities Master Plan Phase 2B – North Pines Campground

PEPC Project Number: 28704

Project Description: Phase 2B is part of the larger Yosemite Valley Utilities Improvement Master Plan. It would replace and consolidate the East Yosemite Valley utility lines that were damaged in the 1997 flood. The eroding process has moved the river bank next to the North Pines Lift Station and undercut the manhole associated with it, exposing under-river utility crossings. Phase 2B would replace the lift station, which is in the North Pines Campground. The North Pines Lift Station and its associated under-river utilities (at the junction of Merced River and Tenaya Creek) must be relocated before they fail and spill sewage into the Wild and Scenic Merced River.

Scope of work:

- relocate the North Pines Lift Station to the entrance near the kiosk
- re-grade the gravity sewer mains
- replace the primary power lines
- keep the existing water lines in the North Pines Campground and in the stables area
- replace the comfort station in the Backpackers Campground with vault toilets

In April 2009, the Plaintiffs approved the use of the North Pines Amphitheater Utility Corridor to allow North Pines Lift Station relocation and under-river utility crossings abandonment.

Project Location:

Mariposa, CA

Mitigations:

- Ensure that consultation with park Archeology is completed prior to ground disturbance; this includes detailed archeological monitoring necessary as part of data recovery plan to avoid adverse effects to significant archeological resources. Laura Kirn, 379-1314.

Describe the category used to exclude action from further NEPA analysis and indicate the number of the category (see Section 3-4 of DO-12):

C.15 Installation of underground utilities in previously disturbed areas having stable soils, or in an existing utility right-of-way.

On the basis of the environmental impact information in the statutory compliance file, with which I am familiar, I am categorically excluding the described project from further NEPA analysis. No exceptional circumstances or conditions in Section 3-6 apply, and the action is fully described in Section 3-4 of DO-12.

Park Superintendent //Don L. Neubacher//

Date 6/30/10

The signed original of this document is on file at the Environmental Planning and Compliance Office in Yosemite National Park.



ENVIRONMENTAL SCREENING FORM (ESF)

DO-12 APPENDIX 1

Date Form Initiated: 6/14/2010

Updated May 2007 - per 2004 Departmental Manual revisions and proposed Director's Order 12 changes

A. PROJECT INFORMATION

Park Name: Yosemite National Park
Project Title: 2009-029 Yosemite Valley Integrated Improvement Utilities Master Plan Phase 2B - North Pines Campground
PEPC Project 28704
Project Type: Facility Rehabilitation (FR)
Project Location: County, State: Mariposa, California
Project Leader: David Engelstad

Preliminary drawings attached? Yes

Is project a hot topic? (Controversial or sensitive issues should be brought to attention of Regional Director)? No

B. RESOURCE EFFECTS TO CONSIDER:

Identify potential effects to the following physical, natural, or cultural resources	No Effect	Negligible Effects	Minor Effects	Exceeds Minor Effects	Data Needed to Determine/Notes
1. Geologic resources – soils, bedrock, streambeds, etc.		Negligible			Sewer line will include 10-foot-long trenches; lift station vaults are 24 feet deep; vault toilets would be 8 feet.
2. From geohazards	No				
3. Air quality		Negligible			Air emissions are associated with this utilities project. These are temporary in nature and would be kept to a minimum through project mitigations.
4. Soundscapes		Negligible			Temporary noises would be included in the utility project; work would only be performed during daylight hours.
5. Water quality or quantity	No				
6. Streamflow characteristics	No				

Identify potential effects to the following physical, natural, or cultural resources	No Effect	Negligible Effects	Minor Effects	Exceeds Minor Effects	Data Needed to Determine/Notes
7. Marine or estuarine resources	No				
8. Floodplains or wetlands	No				
9. Land use, including occupancy, income, values, ownership, type of use	No				
10. Rare or unusual vegetation – old growth timber, riparian, alpine	No				
11. Species of special concern (plant or animal; state or federal listed or proposed for listing) or their habitat	No				
12. Unique ecosystems, biosphere reserves, World Heritage Sites	No				Yosemite National Park is a World Heritage Site.
13. Unique or important wildlife or wildlife habitat	No				
14. Unique or important fish or fish habitat	No				
15. Introduce or promote non-native species (plant or animal)	No				This project includes Division 1 Specifications, which ensures that all equipment and materials brought into the park are free of non-native, invasive plants and animals.
16. Recreation resources, including supply, demand, visitation, activities, etc.	No				
17. Visitor experience, aesthetic resources		Negligible			Information about temporary traffic delays would be distributed to visitors.
18. Archeological resources		Negligible			An archeology monitor will be on site during ground disturbance.
19. Prehistoric/historic structure	No				
20. Cultural landscapes		Negligible			Yosemite Valley Historic District.
21. Ethnographic resources		Negligible			An American Indian monitor will be on site during excavations.
22. Museum collections (objects, specimens, and archival and manuscript collections)	No				

Identify potential effects to the following physical, natural, or cultural resources	No Effect	Negligible Effects	Minor Effects	Exceeds Minor Effects	Data Needed to Determine/Notes
23. Socioeconomics, including employment, occupation, income changes, tax base, infrastructure	No				
24. Minority and low income populations, ethnography, size, migration patterns, etc.	No				
25. Energy resources	No				
26. Other agency or tribal land use plans or policies	No				
27. Resource, including energy, conservation potential, sustainability	No				
28. Urban quality, gateway communities, etc.	No				
29. Long-term management of resources or land/resource productivity	No				This project meets the park's goal of maintaining facilities and the long-term management of resources.
30. Other important environment resources (e.g. geothermal, paleontological resources)?	No				

C. MANDATORY CRITERIA

Mandatory Criteria: If implemented, would the proposal:	Yes	No	N/A	Comment or Data Needed to Determine
A. Have significant impacts on public health or safety?		No		
B. Have significant impacts on such natural resources and unique geographic characteristics as historic or cultural resources; park, recreation, or refuge lands; wilderness areas; wild or scenic rivers; national natural landmarks; sole or principal drinking water aquifers; prime farmlands; wetlands (Executive Order 11990); floodplains (Executive Order 11988); national monuments; migratory birds; and other ecologically significant or critical areas?		No		Mitigated; the assessment of effect is "No Adverse Effect."
C. Have highly controversial environmental effects or involve unresolved conflicts concerning alternative uses of available resources (NEPA section 102(2)(E))?		No		
D. Have highly uncertain and potentially significant environmental effects or involve unique or unknown environmental risks?		No		

Mandatory Criteria: If implemented, would the proposal:	Yes	No	N/A	Comment or Data Needed to Determine
E. Establish a precedent for future action or represent a decision in principle about future actions with potentially significant environmental effects?		No		
F. Have a direct relationship to other actions with individually insignificant, but cumulatively significant, environmental effects?		No		
G. Have significant impacts on properties listed or eligible for listing on the National Register of Historic Places, as determined by either the bureau or office?		No		
H. Have significant impacts on species listed or proposed to be listed on the List of Endangered or Threatened Species, or have significant impacts on designated Critical Habitat for these species?		No		
I. Violate a federal law, or a state, local, or tribal law or requirement imposed for the protection of the environment?		No		
J. Have a disproportionately high and adverse effect on low income or minority populations (Executive Order 12898)?		No		
K. Limit access to and ceremonial use of Indian sacred sites on federal lands by Indian religious practitioners or significantly adversely affect the physical integrity of such sacred sites (Executive Order 13007)?		No		
L. Contribute to the introduction, continued existence, or spread of noxious weeds or non-native invasive species known to occur in the area or actions that may promote the introduction, growth, or expansion of the range of such species (Federal Noxious Weed Control Act and Executive Order 13112)?		No		

For the purpose of interpreting these procedures within the NPS, any action that has the potential to violate the NPS Organic Act by impairing park resources or values would constitute an action that triggers the DOI exception for actions that threaten to violate a federal law for protection of the environment.

D. OTHER INFORMATION

Are personnel preparing this form familiar with the site? Yes

Did personnel conduct a site visit? No

Is the project in an approved plan such as a General Management Plan or an Implementation Plan with an accompanying NEPA document? Yes, the Yosemite Valley Utilities Improvement Master Plan; East Yosemite Valley Utilities Improvement Plan

Are there any interested or affected agencies or parties? Yes

Has consultation with all affected agencies or tribes been completed? Yes

Are there any connected, cumulative, or similar actions as part of the proposed action? (e.g., other development projects in area or identified in GMP, adequate/available utilities to accomplish project)? Yes

E. INTERDISCIPLINARY TEAM SIGNATORIES

<u>Interdisciplinary Team</u>	<u>Field of Expertise</u>
Don L. Neubacher	Superintendent
Kathleen Morse	Chief of Planning
Mark Butler	Chief of Project Management
Katariina Tuovinen	Chief of Administration Management
Ed Walls	Chief of Facilities Management
Niki Nicholas	Chief of Resources Management & Science
Marty Nielson	Chief of Business and Revenue Management
Tom Medema	Chief of Interpretation and Education
Charles Cuvelier	Chief of Visitor and Resource Protection Chief Ranger
David Engelstad	Project Leader
Elexis Mayer	Environmental Planning and Compliance Program Manager
Jeannette Simons	NHPA Specialist
Renea Kenec	NEPA Specialist

E. SUPERVISORY SIGNATORY

Recommended:

Compliance Specialists	Date
<u>//Renea Kenec//</u> Compliance Specialist – Renea Kenec	<u>6/24/10</u>
<u>//Renea Kenec// (acting)</u> Compliance Program Manager – Elexis Mayer	<u>6/24/10</u>
<u>//Mark A. Butler//</u> Chief, Project Management – Mark Butler	<u>6/28/10</u>

Approved:

Superintendent	Date
<u>//Don L. Neubacher//</u> Don L. Neubacher	<u>6/30/10</u>

The signed original of this document is on file at the Environmental Planning and Compliance Office in Yosemite National Park.



PARK ESF ADDENDUM

Today's Date: **June 16, 2010**

PROJECT INFORMATION

Park Name: Yosemite National Park
Project Title: 2009-029 Yosemite Valley Integrated Improvement Utilities Master Plan
 Phase 2B - North Pines Campground
PEPC Project Number: 28704
Project Type: Facility Rehabilitation (FR)
Project Location: County, State: **Mariposa, California**
Project Leader: David Engelstad

PARK ESF ADDENDUM QUESTIONS & ANSWERS

ESF Addendum Questions	Yes	No	N/A	Data Needed to Determine/Notes
SPECIAL STATUS SPECIES CHECKLIST				
1. Listed or proposed threatened or endangered species (Federal or State)?		No		
2. Species of special concern (Federal or State)?		No		
3. Park rare plants or vegetation?		No		
4. Potential habitat for any special-status species listed above?		No		
NATIONAL HISTORIC PRESERVATION ACT CHECKLIST				
5. Entail ground disturbance?	Yes			Sewer line will include 10 foot trenches, lift station vaults are 18 feet deep and vault toilets will be 8 feet.
6. Are any archeological or ethnographic sites located within the	Yes			Detailed archeological monitoring is necessary as part of data recovery plan to

area of potential effect?				avoid adverse effects to significant archeological resources.
7. Entail alteration of a historic structure or cultural landscape?		No		
8. Has a National Register form been completed?		No		
9. Are there any structures on the park's List of Classified Structures in the area of potential effect?		No		

WILD AND SCENIC RIVERS ACT CHECKLIST

10. Fall within a wild and scenic river corridor? (Name the river corridor)	Yes			Merced River.
11. Fall within the bed and banks AND will affect the free-flow of the river?		No		
12. Have the possibility of affecting water quality of the area?		No		
13. Remain consistent with its river segment classification?		No		
14. Fall on a tributary of a Wild and Scenic River?		No		East Yosemite Valley tributaries.
15. Will the project encroach or intrude upon the Wild and Scenic River corridor?		No		
16. Will the project unreasonably diminish scenic, recreational, or fish and wildlife values?		No		
17. Consistent with the provisions in the Merced River Plan Settlement Agreement?	Yes			

WILDERNESS ACT CHECKLIST

18. Within designated Wilderness?		No		
19. Within a Potential Wilderness Addition?		No		

Briefing Statement

Integrated Utilities Master Plan (IUMP) Phase 3B – Location of new North Pines Lift Station & Utility Corridor

PROBLEM

- The eroding process at the junction of the Merced River and Tecoya Creek is dynamic and changing the land mass of the peninsula on the northwest end of North Pines Campground.
- This eroding process has moved the river bank next to the North Pines Lift Station (NPLS) and has undercut the manhole associated with the lift station.
- The existing electrical line, crossing the Merced River, to the lift station has been exposed from prior flood events and is in danger of further damage from the river scouring process.
- The existing force main, from the NPLS, crosses Tecoya Creek at the junction with Merced River. Shifting of this junction, due to flood events, may expose/damage this piping in the future.

EVALUTION

- A value analysis was completed on January 29, 2009 to brainstorm and evaluate solutions for the NPLS and associated facilities being impacted by the eroding process of the Merced River and Tecoya Creek.
- Three lift station locations (manhole I3, manhole I4, and kiosk) were proposed because they were outside the dynamically eroding/changing peninsula area.
- Two utility corridors were proposed: 1) Utilizing the existing utility crossings under the Merced River and Tecoya Creek at the northwest end of the campground. 2) Utilizing the Amphitheater Utility Corridor crossing the Clark's Bridge as proposed in the East Yosemite Valley Integrated Utilities Improvement Master Plan.

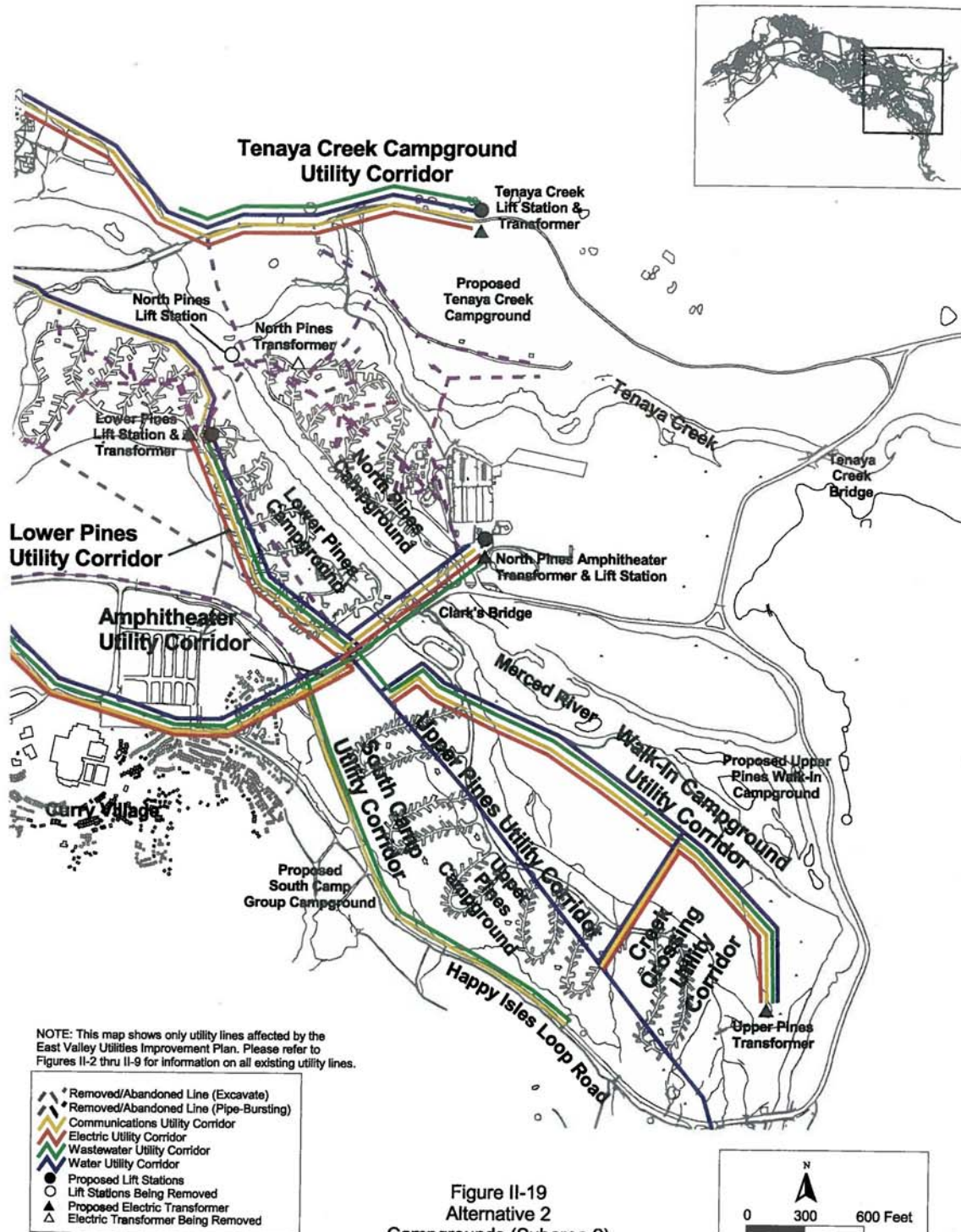
SOLUTION

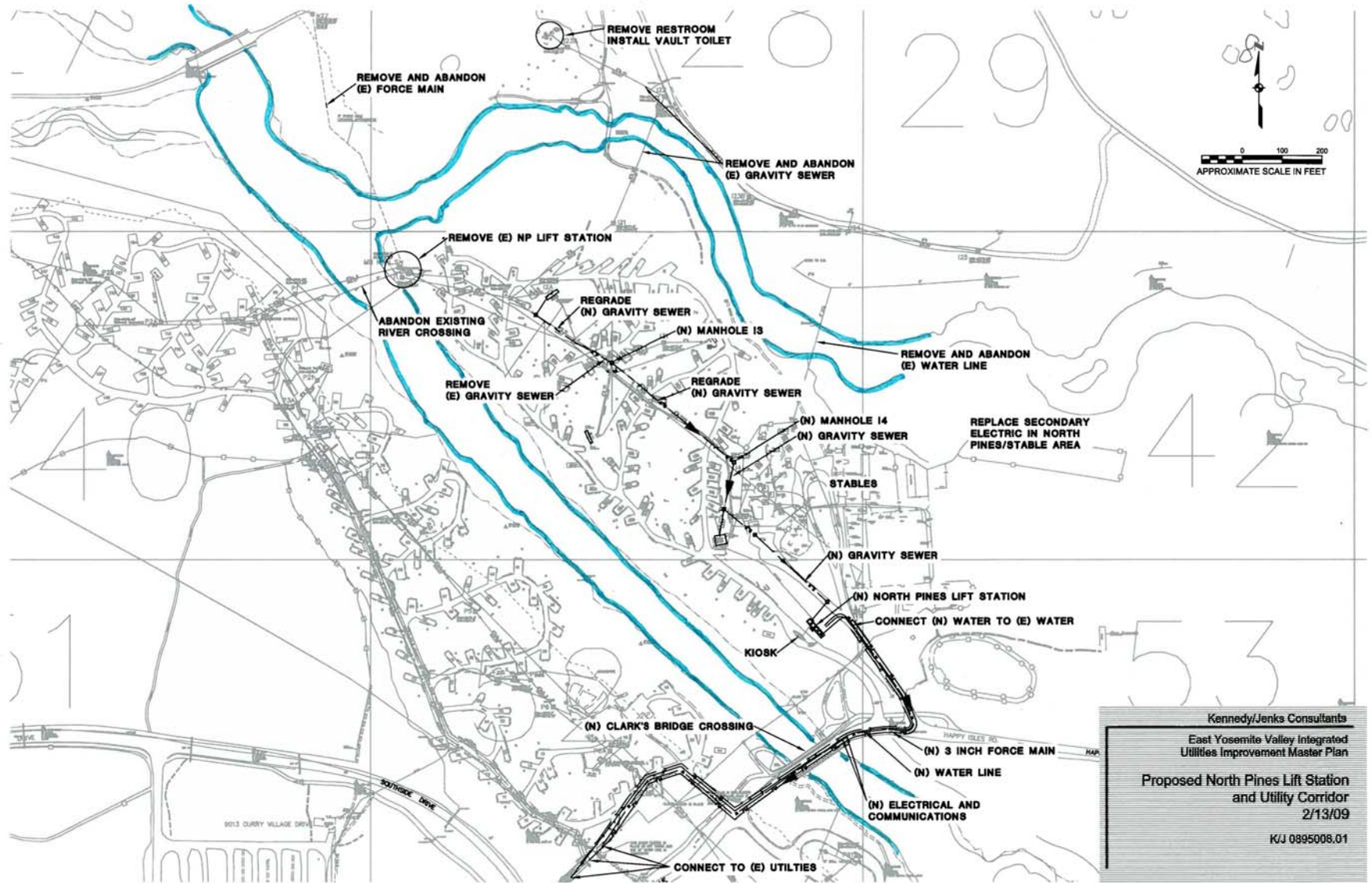
- A final scoring and life-cycle cost, from the value analysis, has the preferred alternative with the lift station located near the kiosk (entrance to campground) and alignment following the Amphitheater Utility Corridor.
- This preferred alternative (see attached 'Proposed North Pines Lift Station and Utility Corridor' schematic drawing) eliminates/abandons all buried utilities from the dynamically eroding northern peninsula area and removes three under-river utility crossings (force main, gravity sewer, water) from Tecoya Creek and two (gravity sewer, electric) from Merced River.
- Finally, this preferred alternative utilizes a utility corridor from the Park's master plan (Amphitheater Utility Corridor) that can serve both existing campground/stables demands and planned future facilities (amphitheater). This lift station location will also negate the need for the planned Amphitheater Lift Station.

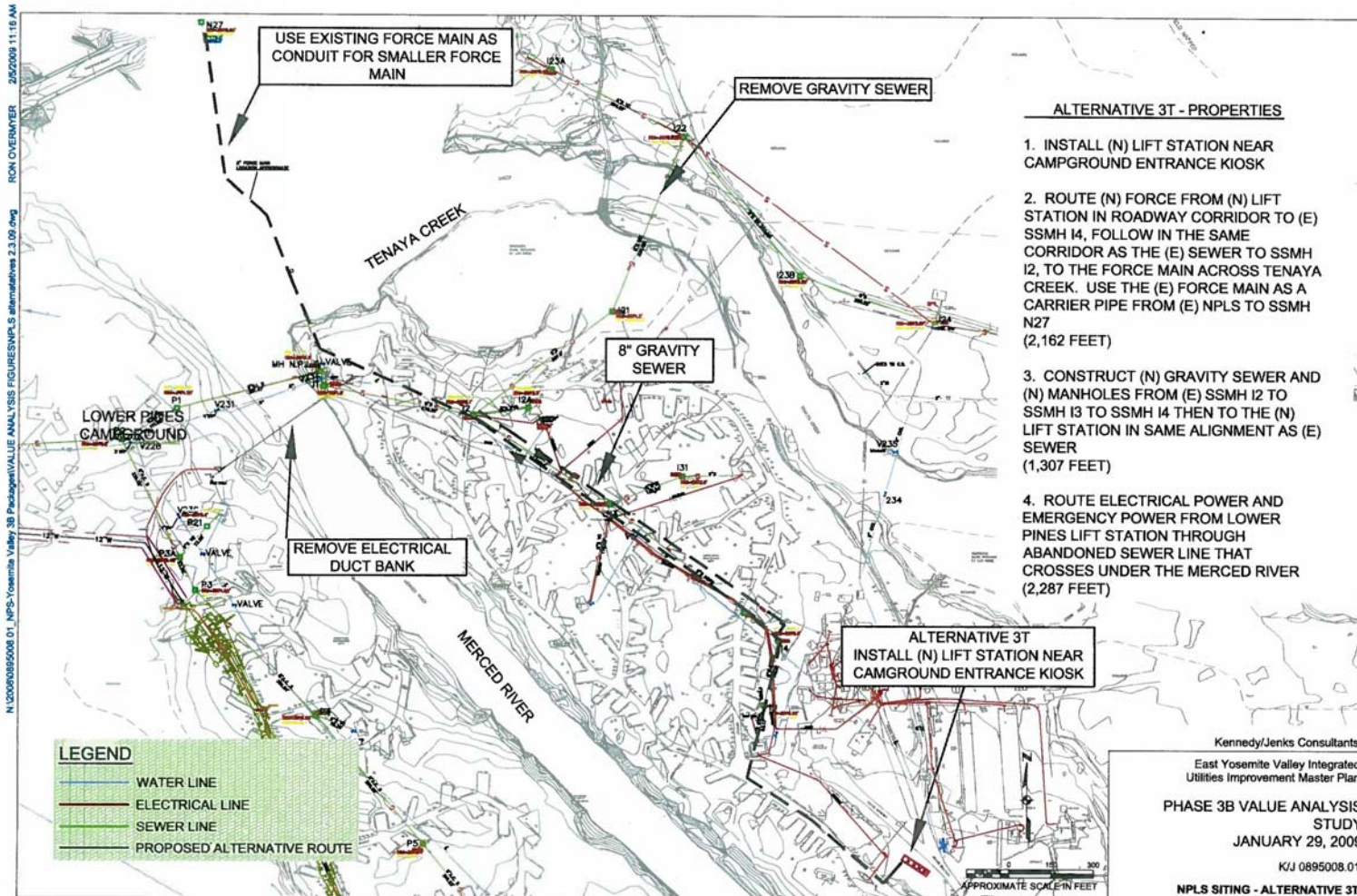
COMPLIANCE/APPROVALS

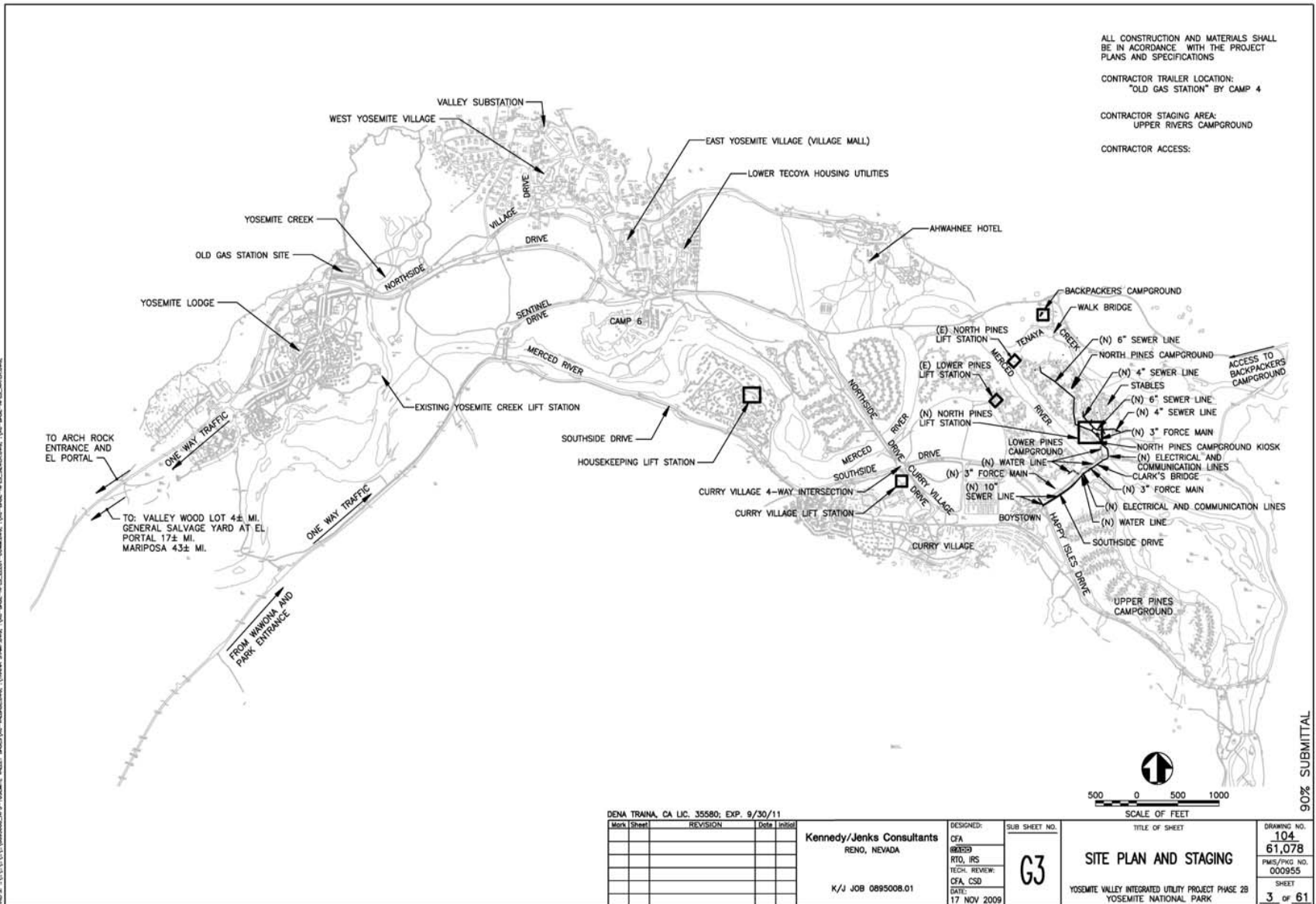
- Preliminary determination by Teri Tucker, with utilities following existing utility alignments, roadways, or previously disturbed areas, is Categorical Exclusion.

-
- The Amphitheater Utility Corridor was cleared through a 2003 Environmental Assessment/FONSI.
 - The North Pines Amphitheater Utility Corridor was enjoined and FONSI was rescinded by the Court in the FOYV v. Kempthorne settlement.
 - Discussion/approval with/from the Plaintiffs is needed to utilize the North Pines Amphitheater Utility Corridor and to ensure that failure of the existing utilities do not pollute the Park's sensitive natural resources.
 - If approval from the Plaintiffs cannot be obtained, the second most preferred alternative would be utilized; lift station located at kiosk and force main crossing Tecoya Creek (see 'NPLS Siting–Alternative 3T' schematic drawing). This alternative would have the sewage force main and electric duct crossing the activity eroding/scouring junction of the Merced River/Tecoya Creek.











ASSESSMENT OF ACTIONS HAVING AN EFFECT ON CULTURAL RESOURCES

A. DESCRIPTION OF UNDERTAKING

1. **Park:** Yosemite National Park **Park District:** East Yosemite Valley

2. Project Description:

a. **Project Name:** 2009-029 Yosemite Valley Integrated Improvement Utilities Master Plan
Phase 2B - North Pines Campground

b. **Date:** June 16, 2010

c. **PEPC project ID number:** 28704

3. Has the area of potential effects been surveyed to identify cultural resources?

No

Yes, Source or reference: **Yosemite Valley Historic District; Yosemite Valley Archeological District**

Check here if no known cultural resources will be affected. (If this is because area has been disturbed, please explain or attach additional information to show the disturbance was so extensive as to preclude intact cultural deposits.)

4. Potentially Affected Resources:

Archeological resources affected?

Name and number(s): Yosemite Valley Archeological District

NR status: 1 - Listed in Register and documented

Notes: An archeological monitor will be on site during all excavations.

Cultural landscapes affected?

Name and number(s): Yosemite Valley Historic District

NR status: 1 - Listed in Register and documented

Ethnographic resources affected?

Name and number: Yosemite Valley American Indian Traditional Cultural Property

NR status: 8 - Within a Register-eligible district

Notes: An American Indian monitor will be on site during all excavations.

5. The proposed action will:

- No Destroy, remove, or alter features/elements from a historic structure
- No Replace historic features/elements in kind
- No Add non-historic features/elements to a historic structure
- No Alter or remove features/elements of a historic setting or environment (inc. terrain)
- No Add non-historic features/elements (inc. visual, audible, or atmospheric) to a historic setting or cultural landscape
- No Disturb, destroy, or make archeological resources inaccessible
- No Disturb, destroy, or make ethnographic resources inaccessible
- Yes Potentially affect presently unidentified cultural resources
- No Begin or contribute to deterioration of historic features, terrain, setting, landscape elements, or archeological or ethnographic resources
- No Involve a real property transaction (exchange, sale, or lease of land or structures)
- Other (please specify)

6. Measures to prevent or minimize loss or impairment of historic/prehistoric properties:
(Remember that setting, location, and use may be relevant.)

- Ensure that consultation with park Archeologist is completed prior to ground disturbance; this includes detailed archeological monitoring necessary as part of data recovery plan to avoid adverse effects to significant archeological resources. Laura Kirn, 379-1314.

7. Supporting Study Data:

(Attach if feasible; if action is in a plan, EA or EIS, give name and project or page number.)

8. Attachments:

- Maps Archeological survey, if applicable Drawings Specifications Photographs
- Scope of Work Site plan List of Materials Samples Other:

Prepared by: Renea Kennec **Date:** June 16, 2010
Title: Environmental Planning Specialist **Telephone:** (209) 379-1038

B. REVIEWS BY CULTURAL RESOURCE SPECIALISTS

The park 106 coordinator requested review by the park's cultural resource specialist/advisors as indicated by check-off boxes or as follows:

Archeologist
Name: Laura Kirn
Date: 3/11/2010
Comments: YOSE 1999 PA, Stipulation C.2.a,e,g,h; detailed archeological monitoring necessary as part of data recovery plan to avoid adverse effects to significant archeological resources.

Check if project does not involve ground disturbance
Assessment of Effect: No Historic Properties Affected No Adverse Effect Adverse Effect
 Streamlined Review

Recommendations for conditions or stipulations:
Doc Method: Park Specific Programmatic Agreement

Historical Architect
Name: Sueann Brown
Date: 6/10/2010

Check if project does not involve ground disturbance
Assessment of Effect: No Historic Properties Affected No Adverse Effect Adverse Effect Streamlined Review

Recommendations for conditions or stipulations:
Doc Method: Park Specific Programmatic Agreement

Historical Landscape Architect
Name: Danny Schaible
Date: 6/15/2010

Check if project does not involve ground disturbance
Assessment of Effect: No Historic Properties Affected No Adverse Effect Adverse Effect Streamlined Review

Recommendations for conditions or stipulations:

No Reviews From: Curator, Historian, 106 Advisor, Other Advisor, Anthropologist

C. PARK SECTION 106 COORDINATOR'S REVIEW AND RECOMMENDATIONS

1. Assessment of Effect:

No Historic Properties Affected No Adverse Effect Adverse Effect

2. Compliance requirements:

A. STANDARD 36 CFR PART 800 CONSULTATION
Further consultation under 36 CFR Part 800 is needed.

B. STREAMLINED REVIEW UNDER THE 2008 SERVICEWIDE PROGRAMMATIC AGREEMENT (PA)

The above action meets all conditions for a streamlined review under section III of the 2008 Servicewide PA for Section 106 compliance.

APPLICABLE STREAMLINED REVIEW Criteria
(Specify 1-16 of the list of streamlined review criteria.)

C. PLAN-RELATED UNDERTAKING

Consultation and review of the proposed undertaking were completed in the context of a plan review process, in accordance with the 2008 Servicewide PA and 36 CFR Part 800.
Specify plan/EA/EIS: _____

D. UNDERTAKING RELATED TO ANOTHER AGREEMENT

The proposed undertaking is covered for Section 106 purposes under another document such as a statewide agreement established in accord with 36 CFR 800.7 or counterpart regulations.
Specify: 1999 Programmatic Agreement

E. COMPLIANCE REQUIREMENTS SATISFIED BY USE OF NEPA

Documentation is required for the preparation of an EA/FONSI or an EIS/ROD has been developed and used so as also to meet the requirements of 36 CFR 800.3 through 800.6

F. No Potential to Cause Effects [800.3(a)(1)]

G. STIPULATIONS/CONDITIONS

Following are listed any stipulations or conditions necessary to ensure that the assessment of effect above is consistent with 36 CFR Part 800 criteria of effect or to avoid or reduce potential adverse effects.

Recommended by Park Section 106 coordinator:

Signature of Historic Preservation Officer //Jeannette Simons//

Date: 6/24/10

D. SUPERINTENDENT'S APPROVAL

The proposed work conforms to the NPS *Management Policies* and *Cultural Resource Management Guideline*, and I have reviewed and approve the recommendations, stipulations, or conditions noted in Section C of this form.

Signature of Superintendent //Don L. Neubacher//

Date: 6/30/10

*The signed original of this document is on file at
the Environmental Planning and Compliance
Office in Yosemite National Park.*