



United States Department of the Interior
NATIONAL PARK SERVICE

Yosemite National Park
P. O. Box 577
Yosemite, California 95389

IN REPLY REFER TO:
L7615(YOSE-PM)

Memorandum

To: Jesse McGahey, Project Manager, Yosemite National Park

From: Acting Superintendent, Yosemite National Park

Subject: NEPA and NHPA Clearance: 2009-097 Parkwide Annual Yosemite Facelift Volunteer Clean-Up (27565)

The Management Team has reviewed the proposed project and completed its environmental assessment documentation, and we have determined that there:

- Will not be any effect on threatened, endangered, or rare species and/or their critical habitat.
- Will not be any effect on historical, cultural, or archeological resources; and
- Will not be serious or long-term undesirable environmental or visual effects.

The subject proposed project, therefore, is now cleared for all NEPA and NHPA compliance requirements as presented above. Project plans and specifications are approved and construction and/or project implementation can commence.

For the proposed project actions to be within compliance requirements during construction and/or project implementation, the following mitigations must be adhered to:

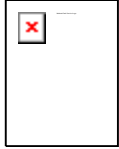
- Ensure a plan is developed with park Vegetation and Ecological Restoration staff to address concerns with all special project sites.

//Katarina Tuovinen// (acting)
David V. Uberuaga

Enclosure (with attachments)

cc: Statutory Compliance File

*The signed original of this document is on file at
the Environmental Planning and Compliance
Office in Yosemite National Park.*



National Park Service
U.S. Department of the Interior

Yosemite NP
Date: 09/15/2009

Categorical Exclusion Form

Project: **2009-097 Parkwide Annual Yosemite Facelift Volunteer Clean-Up**

PEPC ID: **27565**

Project Description: The annual "Yosemite Facelift" is a volunteer-based, park wide litter/trash removal event corresponding with National Public Lands Day. The project is sponsored by the Yosemite Climbing Association (YCA), a non-profit organization. This will be the 6th Annual Yosemite Facelift. First initiated in 2003 by the Yosemite climbing community, the Facelift has grown into a hugely successful, family oriented, park-wide annual event that is supported by park operations.

The project proposal is comprised of two parts: (1) park wide trash removal, and (2) special projects. Park-wide trash removal describes the type and extent of activities that the majority of event volunteers will participate in, while the special projects will have assigned National Park Service (NPS) personnel supervising activities and will require more intensive coordination. This year's Facelift will have even more educational components to encourage volunteer stewardship and resource protection both in National Parks and in the volunteer's home areas. The check-in registration process will be consistent for all volunteers. Each volunteer must sign-up each day worked at the event registration center located in front of the Yosemite Valley Visitor Center. The registration center will be open from 8am to 5pm each day of the event.

Special Projects:

The following projects have been identified by the event organizer, and park staff. There are some special projects that remain from last year's proposed list that were approved through the environmental compliance process last year but not completed—to eliminate unnecessary redundancy not all of those projects will be included in this document. Each project will be accompanied by NPS staff and logistical support. In many cases, the volunteer base will be comprised of organizations or pre-selected groups to ensure safety and efficacy. Site visits will be scheduled in July and August 2009 with the NPS project leader and park archeology staff. If additional special projects are identified, subsequent compliance will be initiated.

Each of these special projects has a corresponding map with the same name, and when possible, will include photos of the planned refuse removal site.

Below Vernal Fall: Several pieces of metal piping, possibly used for trail railings have been abandoned near the base of the fall. Pipes, depending on length, may need to be cut and carried out on foot.

Dumpsite near Cathedral Beach: The dumpsite includes abandoned concrete, asphalt, and other road/trail materials. The dumpsite is located south of Southside Drive and east of the Cathedral Beach Picnic area. A bobcat or other small working vehicle could gain access to the area and easily remove the debris. Maintenance will be consulted on the most efficient manner to remove materials.

Ililouette Canyon: Old pipes/railings, potentially abandoned from a previous viewpoint above the fall, are located near the base of Ililouette Fall. These will be cut up and hand carried out.

Leconte Gully: There are abandoned phone lines and associated cables heading down a cliff at the top of the Leconte Gully just West of Glacier Point. A technical team will potentially be needed to access the lines.

Mosquito Creek Vehicle: This vehicle would need to be removed by cutting, dismantling and hand carrying to the Wawona Road. This project will be completed when it is fire safe and has been cleared by the park Safety Office and Fire Management.

Base of Half Dome: Below the south face of Half Dome, garbage and dropped items accumulate every year. There are still some materials at the base of the south face to be removed that are associated with a previous set-up for the Half Dome Cable Route. In 2006 this area was surveyed by a park archeologist.

Union Point: There is a large pile of garbage and abandoned materials associated with a previous restroom at Union Point View. Park History, Architecture and Landscapes staff have been consulted and have approved the removal of the materials.

Project Locations:

Mariposa County, CA

Tuolumne County, CA

Mitigations:

- **Ensure a plan is developed with park Vegetation and Ecological Restoration staff to address concerns with all special project sites.**

Describe the category used to exclude action from further NEPA analysis and indicate the number of the category (see Section 3-4 of DO-12):

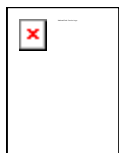
E.4 Removal of non-historic materials and structures in order to restore natural conditions.

On the basis of the environmental impact information in the statutory compliance file, with which I am familiar, I am categorically excluding the described project from further NEPA analysis. No exceptional circumstances (e.g. all boxes in the ESF are marked "no") or conditions in Section 3-6 apply, and the action is fully described in Section 3-4 of DO-12.

Park Acting Superintendent //Katarina Tuovinen// (acting)

Date 9/25/09

*The signed original of this document is on file at
the Environmental Planning and Compliance
Office in Yosemite National Park.*



National Park Service
U.S. Department of the Interior

Yosemite NP
Date: 09/15/2009

ENVIRONMENTAL SCREENING FORM (ESF)

DO-12 APPENDIX 1

Date Form Initiated: **09/15/2009**

Updated May 2007 - per 2004 DM revisions and proposed DO-12 changes

A. PROJECT INFORMATION

Park Name: **Yosemite NP**
Project Title: **Parkwide Annual Yosemite Facelift Parkwide Volunteer Clean-Up**
PEPC Project Number: **27565**
Project Type: **Permit - Special Use (SUP)**
Project Location: **County, State: Mariposa and Tuolumne, California**
Project Leader: **Jesse McGahey**

Preliminary drawings attached? **Yes**

Is project a hot topic (controversial or sensitive issues that should be brought to attention of Regional Director)? **No**

B. RESOURCE EFFECTS TO CONSIDER:

Identify potential effects to the following physical, natural, or cultural resources	No Effect	Negligible Effects	Minor Effects	Exceeds Minor Effects	Data Needed to Determine/Notes
1. Geologic resources – soils, bedrock, streambeds, etc.		Negligible			Various sites will have ground disturbance. A park Archeologist will be on site during any soil disturbing activities.
2. From geohazards	No				
3. Air quality	No				
4. Soundscapes		Negligible			Temporary equipment noises are associated with this project.
5. Water quality or quantity	No				
6. Streamflow characteristics	No				
7. Marine or estuarine resources	No				
8. Floodplains or wetlands	No				
9. Land use, including occupancy, income, values,	No				

ownership, type of use					
10. Rare or unusual vegetation – old growth timber, riparian, alpine	No				
11. Species of special concern (plant or animal; state or federal listed or proposed for listing) or their habitat	No				
12. Unique ecosystems, biosphere reserves, World Heritage Sites	No				Yosemite National Park is a World Heritage site; no historic properties would be adversely affected by implementing this project.
13. Unique or important wildlife or wildlife habitat	No				
14. Unique or important fish or fish habitat	No				
15. Introduce or promote non-native species (plant or animal)	No				No equipment will be brought into the park for this project. All work will be done in-house.
16. Recreation resources, including supply, demand, visitation, activities, etc.	No				
17. Visitor experience, aesthetic resources	No				This project will enhance the visitor experience by reducing trash in the park.
18. Archeological resources		Negligible			Parkwide; this project involves a strong cultural resource education program. All volunteers will speak to park archeology staff, interact with cultural resource displays, and receive historic resource identification guides.
19. Prehistoric/historic structure	No				
20. Cultural landscapes		Negligible			Parkwide.
21. Ethnographic resources	No				
22. Museum collections (objects, specimens, and archival and manuscript collections)	No				
23. Socioeconomics, including employment, occupation, income changes, tax base, infrastructure	No				

24. Minority and low income populations, ethnography, size, migration patterns, etc.	No				
25. Energy resources	No				
26. Other agency or tribal land use plans or policies	No				
27. Resource, including energy, conservation potential, sustainability	No				
28. Urban quality, gateway communities, etc.	No				
29. Long-term management of resources or land/resource productivity	No				
30. Other important environment resources (e.g. geothermal, paleontological resources)?	No				

C. MANDATORY CRITERIA

Mandatory Criteria: If implemented, would the proposal:	Yes	No	N/A	Comment or Data Needed to Determine
A. Have significant impacts on public health or safety?		N		
B. Have significant impacts on such natural resources and unique geographic characteristics as historic or cultural resources; park, recreation, or refuge lands; wilderness areas; wild or scenic rivers; national natural landmarks; sole or principal drinking water aquifers; prime farmlands; wetlands (Executive Order 11990); floodplains (Executive Order 11988); national monuments; migratory birds; and other ecologically significant or critical areas?		N		
C. Have highly controversial environmental effects or involve unresolved conflicts concerning alternative uses of available resources (NEPA section 102(2)(E))?		N		
D. Have highly uncertain and potentially significant environmental effects or involve unique or unknown environmental risks?		N		
E. Establish a precedent for future action or represent a decision in principle about future actions with potentially significant environmental effects?		N		

F. Have a direct relationship to other actions with individually insignificant, but cumulatively significant, environmental effects?		N		
G. Have significant impacts on properties listed or eligible for listing on the National Register of Historic Places, as determined by either the bureau or office?		N		
H. Have significant impacts on species listed or proposed to be listed on the List of Endangered or Threatened Species, or have significant impacts on designated Critical Habitat for these species?		N		
I. Violate a federal law, or a state, local, or tribal law or requirement imposed for the protection of the environment?		N		
J. Have a disproportionately high and adverse effect on low income or minority populations (Executive Order 12898)?		N		
K. Limit access to and ceremonial use of Indian sacred sites on federal lands by Indian religious practitioners or significantly adversely affect the physical integrity of such sacred sites (Executive Order 13007)?		N		
L. Contribute to the introduction, continued existence, or spread of noxious weeds or non-native invasive species known to occur in the area or actions that may promote the introduction, growth, or expansion of the range of such species (Federal Noxious Weed Control Act and Executive Order 13112)?		N		

For the purpose of interpreting these procedures within the NPS, any action that has the potential to violate the NPS Organic Act by impairing park resources or values would constitute an action that triggers the DOI exception for actions that threaten to violate a federal law for protection of the environment.

D. OTHER INFORMATION

Are personnel preparing this form familiar with the site? **Yes**

Did personnel conduct a site visit? **No**

Is the project in an approved plan such as a General Management Plan or an Implementation Plan with an accompanying NEPA document? **No**

Are there any interested or affected agencies or parties? **No**

Did you make a diligent effort to contact them? **N/A**

Has consultation with all affected agencies or tribes been completed? **No**

Are there any connected, cumulative, or similar actions as part of the proposed action? (e.g., other development projects in area or identified in GMP, adequate/available utilities to accomplish project)? **No**

E. INTERDISCIPLINARY TEAM SIGNATORIES

<u>Interdisciplinary Team</u>	<u>Field of Expertise</u>
David V. Uberuaga	Acting Superintendent
Jim Hammett	Acting Deputy Superintendent
Kristina Rylands	Acting Chief of Planning
Mark Butler	Chief of Project Management
Katariina Tuovinen	Chief of Administration Management
Dennis Mattiuzzi	Chief of Facilities Management
Niki Nicholas	Chief of Resources Management & Science
Marty Nielson	Chief of Business and Revenue Management
Tom Medema	Acting Chief of Interpretation and Education
Steve Shackelton	Chief Ranger
Jesse McGahey	Project Leader
Elexis Mayer	Environmental Planning and Compliance
Jeannette Simons	Program Manager
Renea Kennec	NHPA Specialist
	NEPA Specialist

F. SUPERVISORY SIGNATORY

Based on the environmental impact information contained in the statutory compliance file and in this environmental screening form, environmental documentation for this stage of the subject project is complete.

Recommended:

Compliance Specialists	Date
 <u>//Renea Kennec//</u> Compliance Specialist – Renea Kennec	 <u>9/17/09</u>
 <u>//Elexis Mayer//</u> Compliance Program Manager – Elexis Mayer	 <u>9/21/09</u>
 <u>//Mark A. Butler//</u> Chief, Project Management – Mark Butler	 <u>9/23/09</u>

Approved:

Acting Superintendent	Date
 <u>//Katarina Tuovinen// (acting)</u> David V. Uberuaga	 <u>9/25/09</u>

*The signed original of this document is on file at
the Environmental Planning and Compliance
Office in Yosemite National Park.*

PARK ESF ADDENDUM

Today's Date: **September 15, 2009**

PROJECT INFORMATION

Park Name: Yosemite NP

Project Number: 27565

Project Type: Permit - Special Use (SUP)

Project Location: County, State: Mariposa and Tuolumne, California

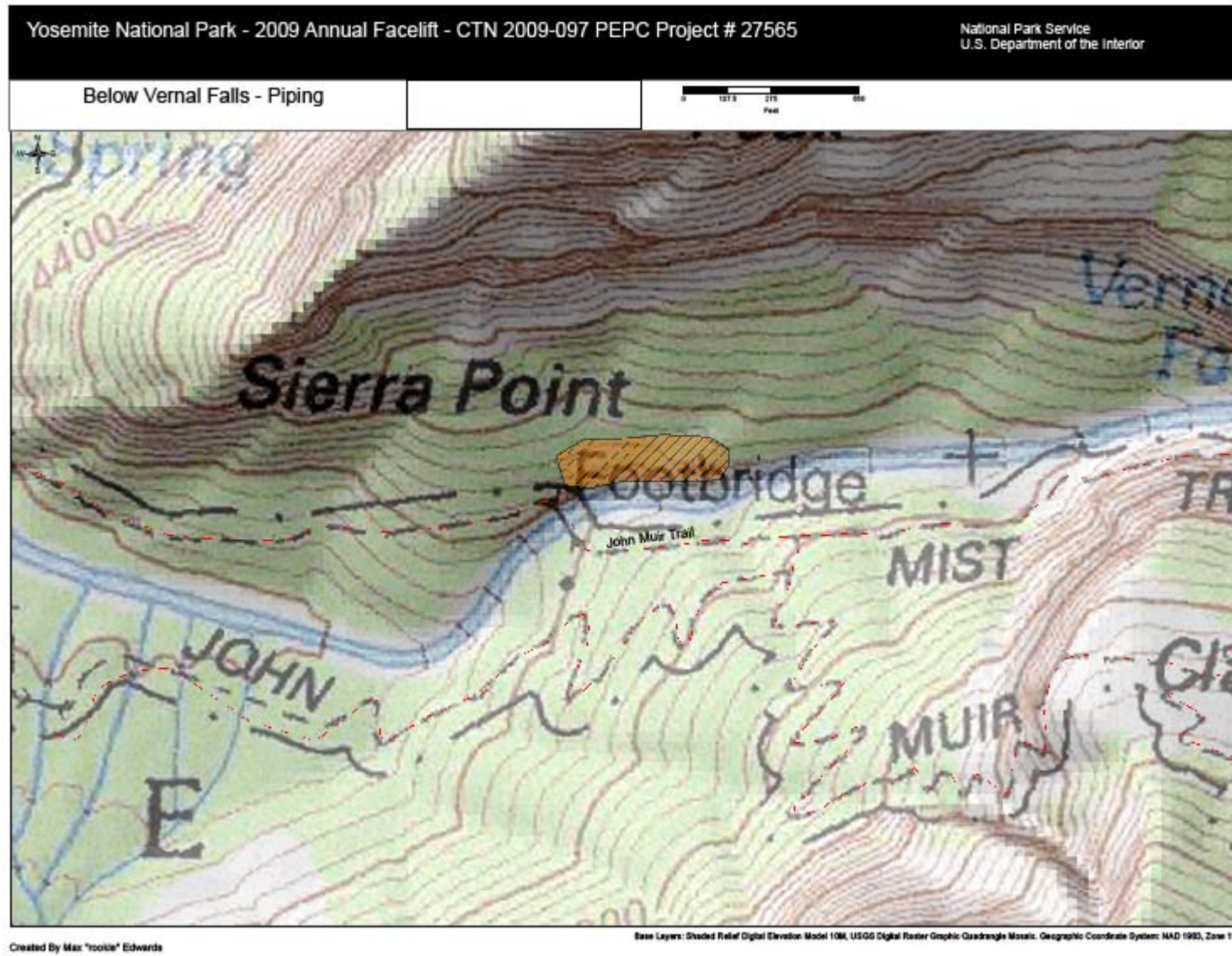
Project Manager: Jesse McGahey

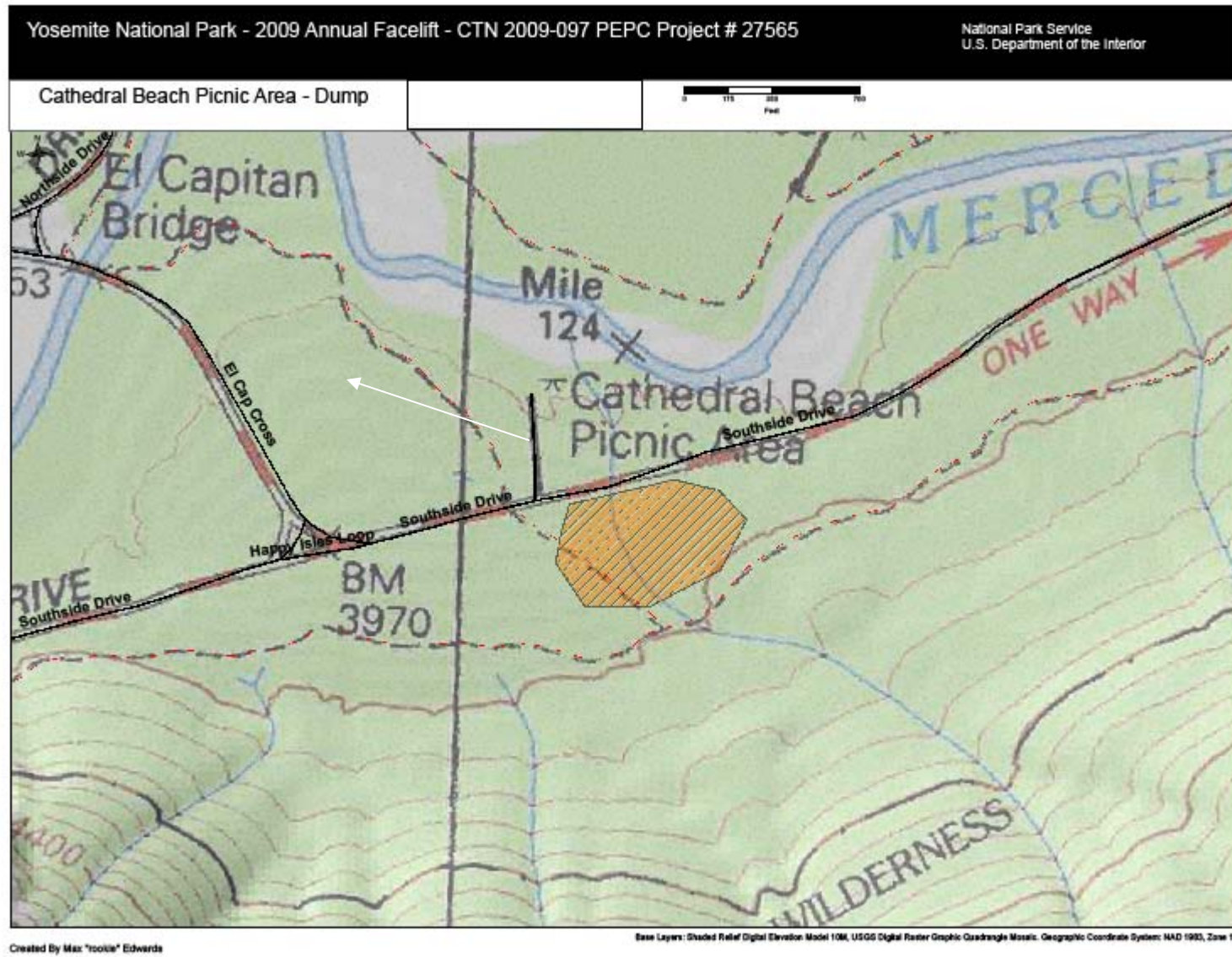
Project Title: 2009-097 Parkwide Annual Yosemite Facelift Volunteer Clean-Up

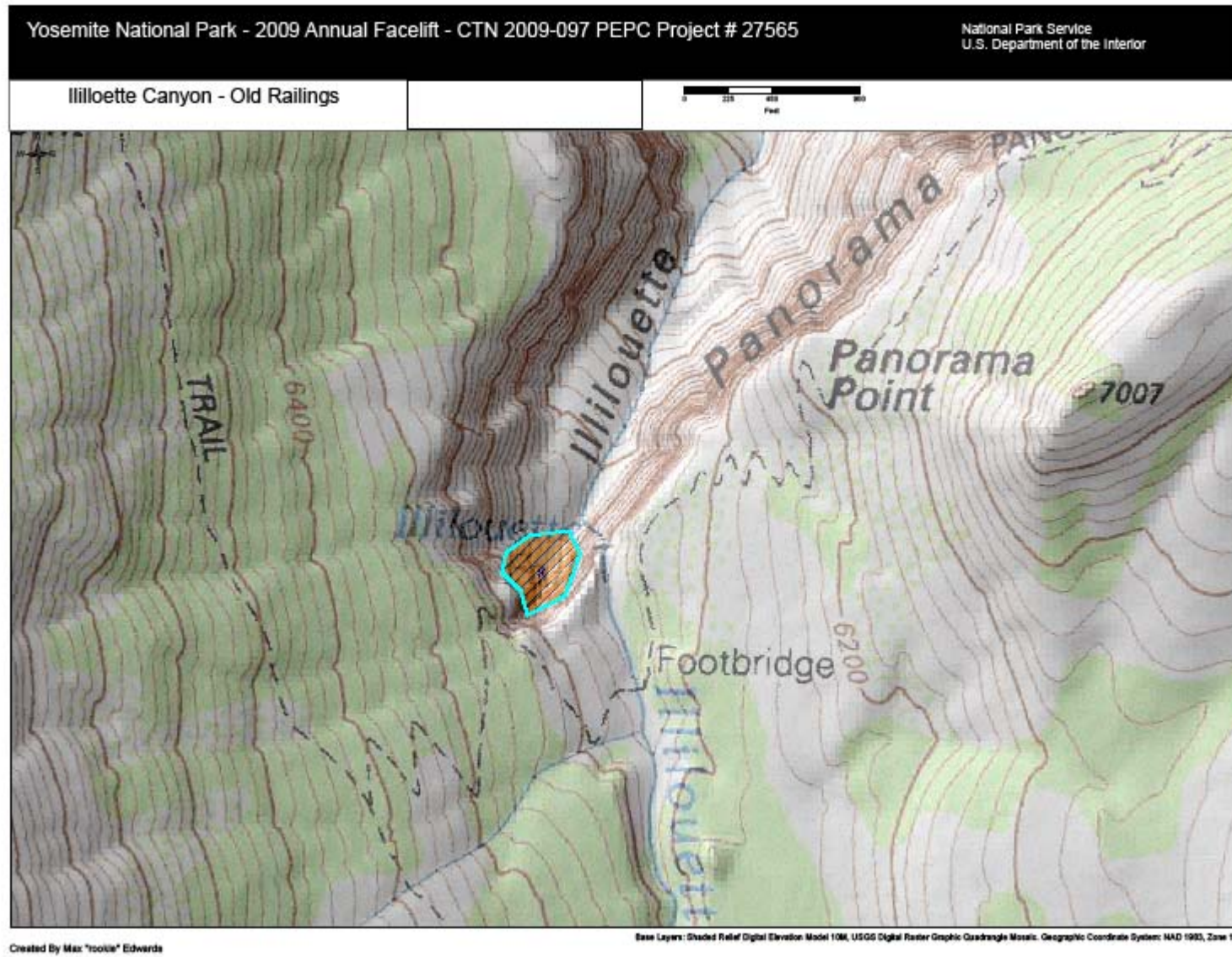
PARK ESF ADDENDUM QUESTIONS & ANSWERS

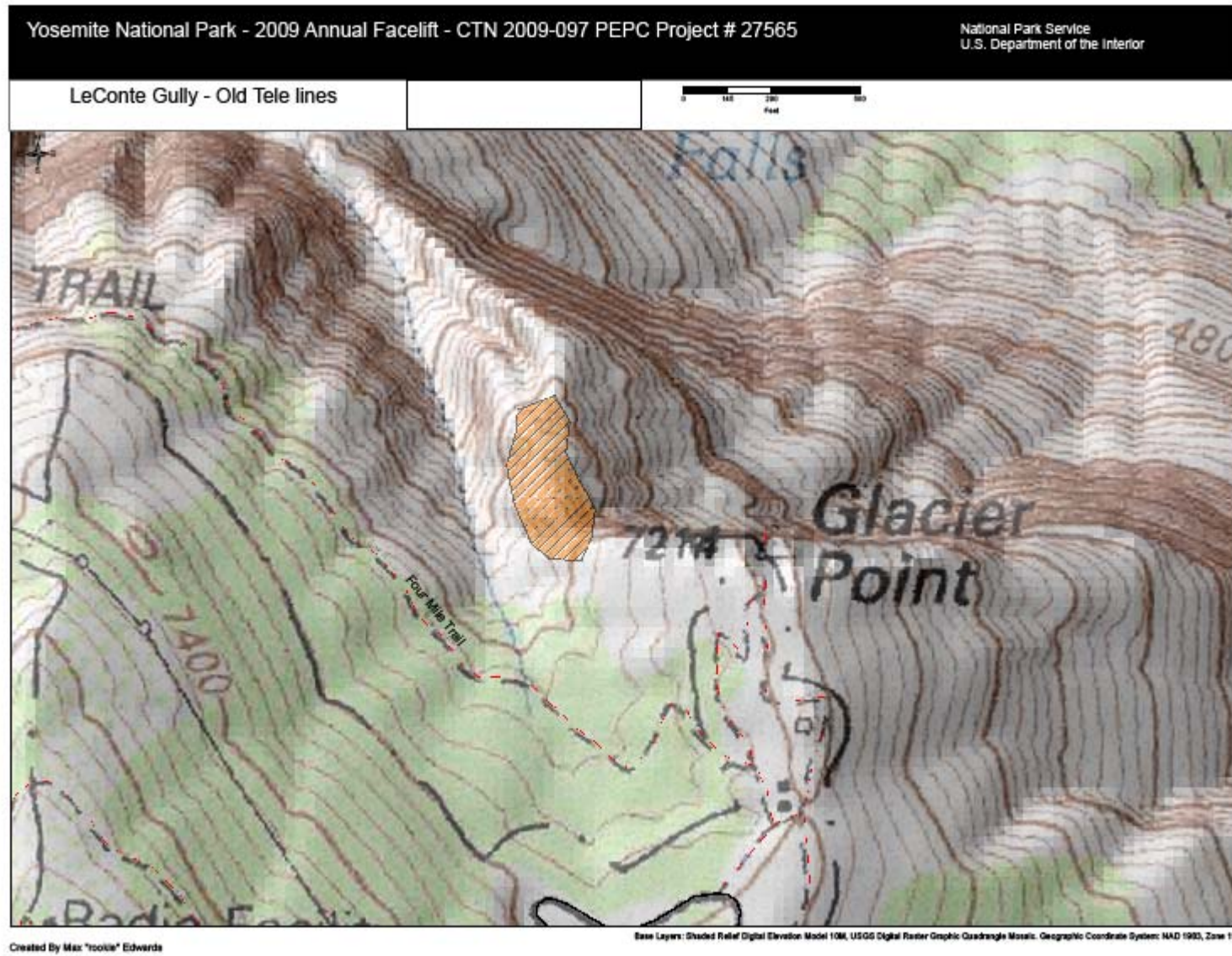
ESF Addendum Questions	Yes	No	N/A	Data Needed to Determine/Notes
1.SPECIAL STATUS SPECIES CHECKLIST				
2. Listed or proposed threatened or endangered species (Federal or State)?		X		
3. Species of special concern (Federal or State)?		X		
4. Park rare plants or vegetation?		X		
5. Potential habitat for any special-status species listed above?		X		
6.NATIONAL HISTORIC PRESERVATION ACT CHECKLIST				
7. Entail ground disturbance?	X			Various sites will have ground disturbance. A park Archeologist will be on site during any soil disturbing activities.
8. Are any archeological or ethnographic sites located within the area of potential effect?	X			Parkwide.
9. Entail alteration of a historic structure or cultural landscape?		X		
10. Has a National Register form been completed?		X		
11. Are there any structures on the park's List of Classified Structures in the area of potential effect?		X		
12.WILD AND SCENIC RIVERS ACT CHECKLIST				
13. Fall within a wild and scenic river corridor?	X			Merced River.
14. Fall within the bed and banks AND will affect the free-flow of the river?		X		
15. Have the possibility of affecting water quality of the area?		X		
16. Remain consistent with its river segment classification?			X	

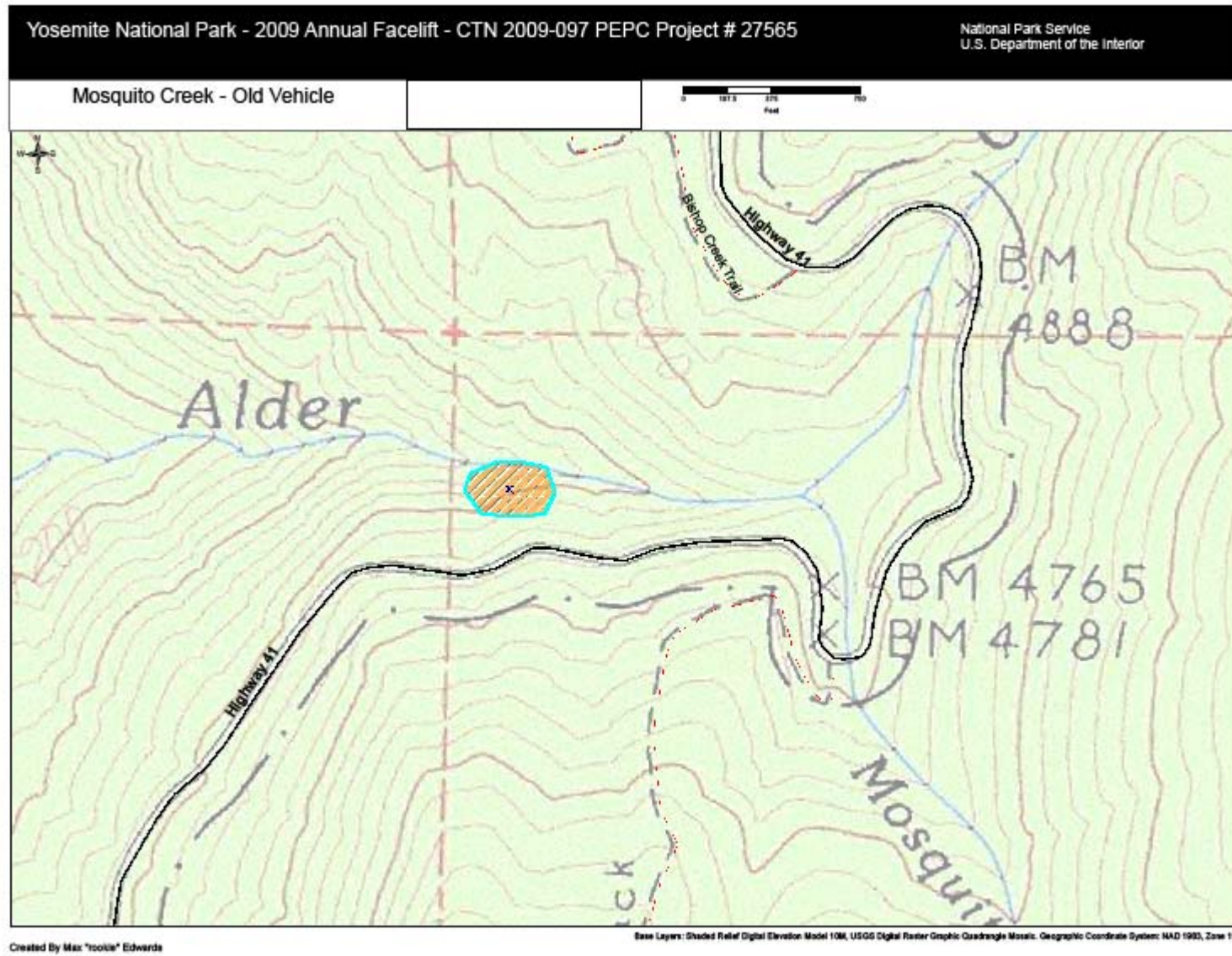
17. Protect and enhance river ORVs?			X	
18. Fall within the River Protection Overlay?	X			Potential trash removal in the river protection overlay.
19. If Yes, remain consistent with conditions of the River Protection Overlay?	X			
20. Remain consistent with the areas Management Zoning?			X	
21. Fall on a tributary of a Wild and Scenic River?	X			Parkwide.
22. Will the project encroach or intrude upon the Wild and Scenic River corridor?		X		
23. Will the project unreasonably diminish scenic, recreational, or fish and wildlife values?		X		
100. WILDERNESS ACT CHECKLIST				
101. Within designated Wilderness?	X			Wilderness Management has determined that this project does not need a Minimum Requirement Analysis.
102. Within a Potential Wilderness Addition?		X		

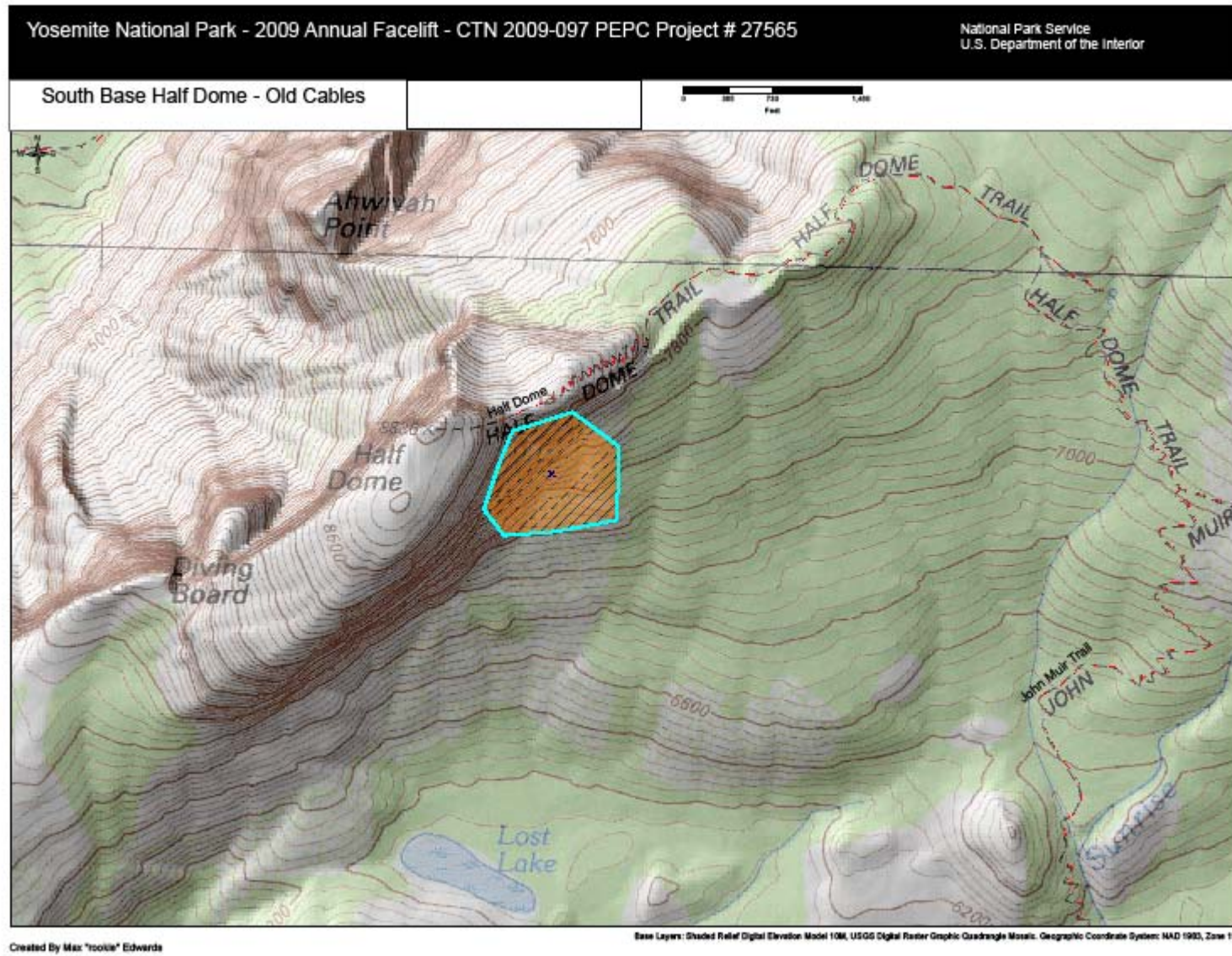


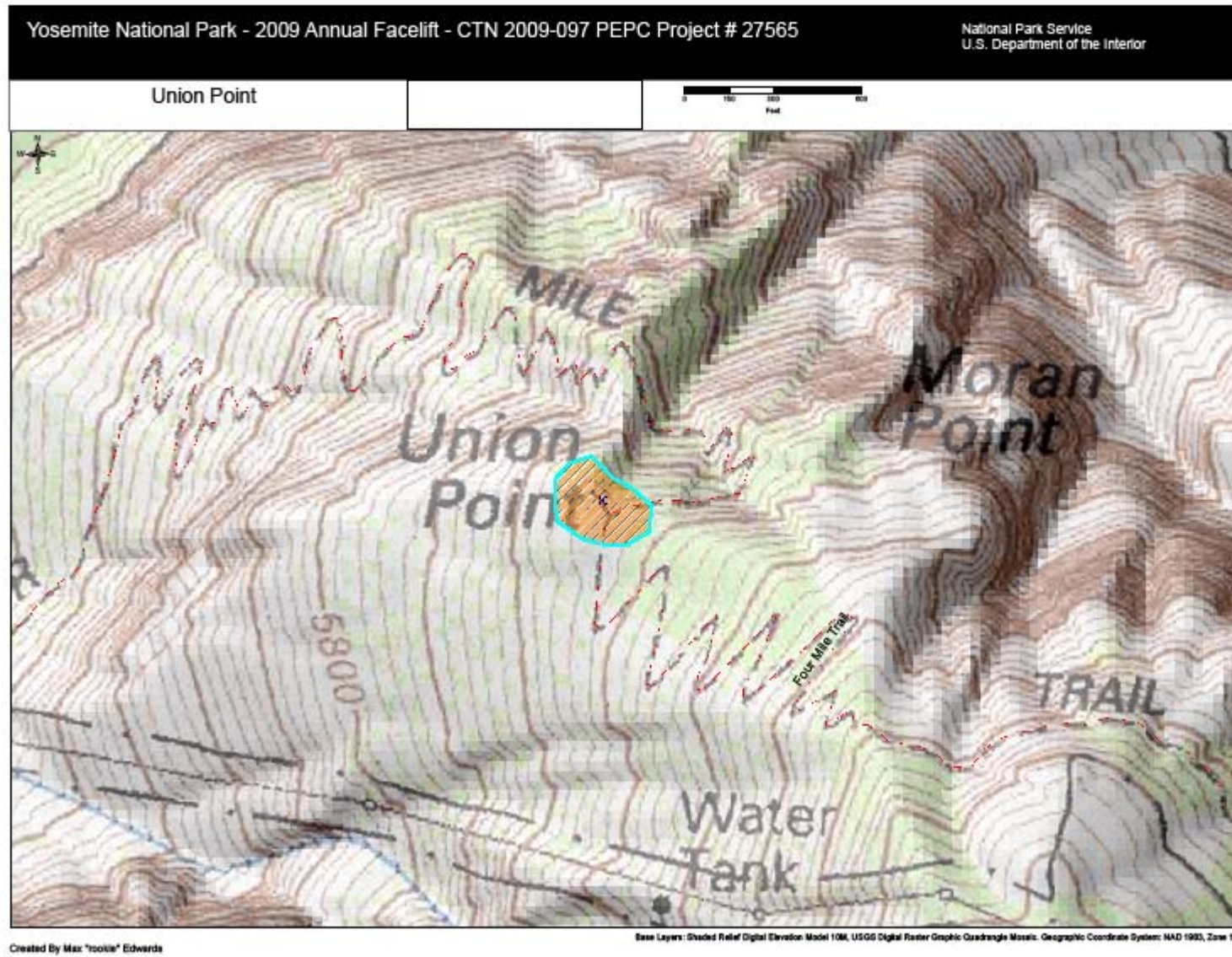


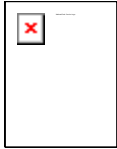












ASSESSMENT OF ACTIONS HAVING AN EFFECT ON CULTURAL RESOURCES

A. DESCRIPTION OF UNDERTAKING

1. Park: **Yosemite NP** Park District: **Parkwide**

2. Project Description:

a. Project Name: **2009-097 Parkwide Annual Yosemite Facelift Volunteer Clean-Up**

b. Date: **September 16, 2009**

c. PEPC Project ID Number: **27565**

d. Describe project and area of potential effects (as defined in 36 CFR 800.2[c])

3. Has the area of potential effects been surveyed to identify cultural resources?

 No

X Yes, Source or reference: **Yosemite Valley Archeological District; Yosemite Valley Historic District; Yosemite Valley American Indian Traditional Cultural Property.**

 Check here if no known cultural resources will be affected. (If this is because area has been disturbed, please explain or attach additional information to show the disturbance was so extensive as to preclude intact cultural deposits.)

4. Potentially Affected Resources:

Archeological resources affected?

Name and number(s): **Park-Wide permit; presence/absence of resources determined on a site by site basis.**

NR status: -0-

Notes: **Mosquito Creek and Ililouette Canyon have not been surveyed.**

Cultural landscapes affected?

Name and number(s): **Park-Wide permit; presence/absence of resources determined on a site by site basis.**

NR status: -0-

Notes: **Mosquito Creek and Ililouette Canyon have not been surveyed.**

5. The proposed action will: (check as many as apply)

No Destroy, remove, or alter features/elements from a historic structure

No Replace historic features/elements in kind

No Add non-historic features/elements to a historic structure

- No Alter or remove features/elements of a historic setting or environment (inc. terrain)
No Add non-historic features/elements (inc. visual, audible, or atmospheric) to a historic setting or cultural landscape
No Disturb, destroy, or make archeological resources inaccessible
No Disturb, destroy, or make ethnographic resources inaccessible
No Potentially affect presently unidentified cultural resources
No Begin or contribute to deterioration of historic features, terrain, setting, landscape elements, or archeological or ethnographic resources
No Involve a real property transaction (exchange, sale, or lease of land or structures)
X Other (please specify) - **Inadvertent collection.**

6. Measures to prevent or minimize loss or impairment of historic/prehistoric properties:
(Remember that setting, location, and use may be relevant.)

No Assessment of Effect mitigations identified

7. Supporting Study Data:
(Attach if feasible; if action is in a plan, EA or EIS, give name and project or page number.)

8. Attachments:
☐ Maps ☐ Archeological survey, if applicable ☐ Drawings ☐ Specifications ☐ Photographs
☐ Scope of Work ☐ Site plan ☐ List of Materials ☐ Samples ☐ Other:

Prepared by: **Renea Kennec** Date: **September 16, 2009** Title: **Environmental Protection Specialist** Telephone: **209-379-1038**

B. REVIEWS BY CULTURAL RESOURCE SPECIALISTS

The park 106 coordinator requested review by the park's cultural resource specialist/advisors as indicated by check-off boxes or as follows:

☒ Archeologist
Name: **Laura Kirn**
Date: **09/16/2009**
Comments: **YOSE 1999 PA, Stipulation VII.C.2.h.**

Check if project does not involve ground disturbance ☐
Assessment of Effect: ☐ No Historic Properties Affected **X** No Adverse Effect ☐ Adverse Effect ☐ Streamlined Review
Recommendations for conditions or stipulations:

Doc Method: **Park Specific Programmatic Agreement**

☒ Historical Architect

Name: **Sueann Brown**

Date: **09/16/2009**

Comments:

Check if project does not involve ground disturbance ☐

Assessment of Effect: ☐ No Historic Properties Affected ☒ No Adverse Effect ☐ Adverse Effect ☐ Streamlined Review

Recommendations for conditions or stipulations:

Doc Method: **Park Specific Programmatic Agreement**

☒ Anthropologist

Name: **Jeannette Simons**

Date: **09/16/2009**

Comments: **Educational programs/orientation will minimize potential for impacts to traditional cultural properties.**

Check if project does not involve ground disturbance ☐

Assessment of Effect: ☐ No Historic Properties Affected ☒ No Adverse Effect ☐ Adverse Effect ☐ Streamlined Review

Recommendations for conditions or stipulations:

Doc Method: **Park Specific Programmatic Agreement**

No Reviews From: **Curator, Archeologist, Historian, 106 Advisor, Other Advisor, Historical Landscape Architect**

C. PARK SECTION 106 COORDINATOR'S REVIEW AND RECOMMENDATIONS

1. Assessment of Effect:

☐ No Historic Properties Affected ☒ No Adverse Effect ☐ Adverse Effect

2. Compliance requirements:

☐ A. STANDARD 36 CFR PART 800 CONSULTATION

Further consultation under 36 CFR Part 800 is needed.

☐ B. STREAMLINED REVIEW UNDER THE 2008 SERVICEWIDE PROGRAMMATIC AGREEMENT (PA)

The above action meets all conditions for a streamlined review under section III of the 2008 Servicewide PA for Section 106 compliance.

APPLICABLE STREAMLINED REVIEW Criteria
(Specify 1-16 of the list of streamlined review criteria.)

☐ C. PLAN-RELATED UNDERTAKING

Consultation and review of the proposed undertaking were completed in the context of a plan review process, in accordance with the 2008 Servicewide PA and 36 CFR Part 800.

Specify plan/EA/EIS: _____

☒ D. UNDERTAKING RELATED TO ANOTHER AGREEMENT

The proposed undertaking is covered for Section 106 purposes under another document such as a statewide agreement established in accord with 36 CFR 800.7 or counterpart regulations.

Specify: _____

☐ E. COMPLIANCE REQUIREMENTS SATISFIED BY USE OF NEPA

Documentation is required for the preparation of an EA/FONSI or an EIS/ROD has been developed and used so as also to meet the requirements of 36 CFR 800.3 through 800.6

☐ F. No Potential to Cause Effects [800.3(a)(1)]

☐ G. STIPULATIONS/CONDITIONS

Following are listed any stipulations or conditions necessary to ensure that the assessment of effect above is consistent with 36 CFR Part 800 criteria of effect or to avoid or reduce potential adverse effects.

Recommended by Park Section 106 coordinator:

Signature of Historic Preservation Officer //Jeannette Simons//

Date: 9/17/09

D. SUPERINTENDENT'S APPROVAL

The proposed work conforms to the NPS *Management Policies* and *Cultural Resource Management Guideline*, and I have reviewed and approve the recommendations, stipulations, or conditions noted in Section C of this form.

Signature of Acting Superintendent //Katarina Tuovinen// (acting)

Date: 9/25/09

*The signed original of this document is on file at
the Environmental Planning and Compliance
Office in Yosemite National Park.*