

U.S. Department of the Interior
National Park Service



ENVIRONMENTAL ASSESSMENT & SECTION 106 FOR THE

Washington Monument Visitor Security Screening



THE Louis Berger Group, INC.

NOVEMBER 8, 2010

Agenda

5:30 – 6:00pm

Open House

6:00 – 6:45pm

Project Background

NEPA and Section 106 Process

Proposed Actions

Opportunities to Comment

6:45: 7:30pm

Open House



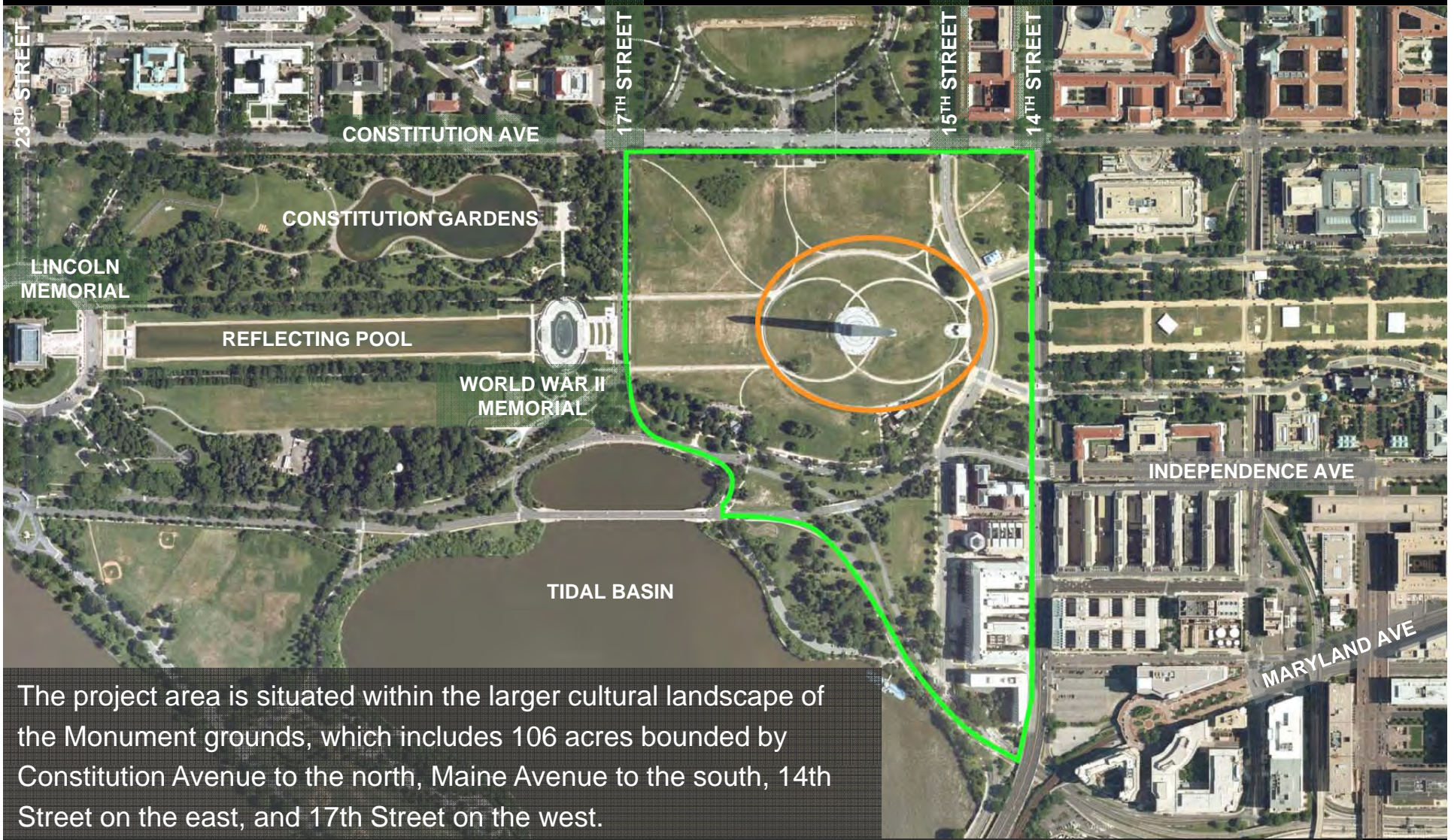
Proposed Actions

The purpose of the proposed actions is to improve the security of the Monument in a manner that maintains and preserves the visitor experience and cultural landscape of the Monument grounds.

As the primary memorial to the nation's first president, the Monument is one of the most prominent icons in the nation and is toured by approximately one million visitors annually with many more visiting the surrounding grounds. Its popularity, combined with its status as an icon, makes it a potential target for terrorist attack. A permanent perimeter vehicular barrier system was completed with landscape improvements in 2006. The visitor screening facility that was also constructed at that time was temporary. Action is needed to complete the comprehensive security improvements.



Project Background



The project area is situated within the larger cultural landscape of the Monument grounds, which includes 106 acres bounded by Constitution Avenue to the north, Maine Avenue to the south, 14th Street on the east, and 17th Street on the west.



Project Background

Temporary Visitor Screening Facility



Visitors waiting to enter the Monument








Project Background



Monument Lodge

LEGEND

-  Temporary visitor screening facility
-  Granite plaza and flagpole circle
-  Permanent vehicular barrier
-  Monument Lodge
-  Sylvan Theater



Project Timeline

2010

2011

JUN

SEP

JAN

MAR

JUN

SEP

JAN

CONCEPTUAL
DESIGN

SCHEMATIC DESIGN

DESIGN DEVELOPMENT

CFA / NCPC APPROVAL PROCESS

EA

SECTION 106



Regulations and Procedures

NEPA National
Environmental
Policy Act

NHPA National
Historic
Preservation
Act



Regulations

NEPA National Environmental Policy Act

The National Environmental Policy Act of 1969, as amended

(42 U.S.C. 4321 et seq.)

CEQ Council on Environmental Quality

"Regulations for Implementing the Procedural Provisions of NEPA"
(40 CFR 1500-1508).

DO-12 Department of the Interior, Director's Order 12

Director's Order #12:
Conservation Planning,
Environmental Impact Analysis,
and Decision-making

EA Process

1. **Public Notification**
2. **Define Purpose & Need** – for the proposed action, determine project area, define framework within which reasonable alternatives can be developed, and develop preliminary alternatives
3. **Data Collection** - Begin resource inventory and analysis, determine resource topics affected by the proposed action, and initiate data collection/ research needed to carry impact analysis forward
4. **Define Preliminary Alternatives**
5. **Internal and External Scoping** - to introduce project and identify issues
6. **Public Scoping Meeting**
7. Describe the **Affected Environment**, refine alternatives, and prepare impact analysis of affected resource topics
8. Prepare **draft Environmental Assessment (EA)** for Internal Agency Review, prepare Final EA for Public Comment
9. Release **Final EA for 30-day Public Comment Period**
10. **Review** all public comments received on the EA and **respond** to comments
11. Prepare and finalize appropriate **Decision Document**



Impact Topics



Visitor Use and Experience

Public Safety

Park Management and Operations

Soils

Visual Resources

Cultural Resources



THE Louis Berger Group, INC.



Section 106

Regulations

NHPA National Historic Preservation Act

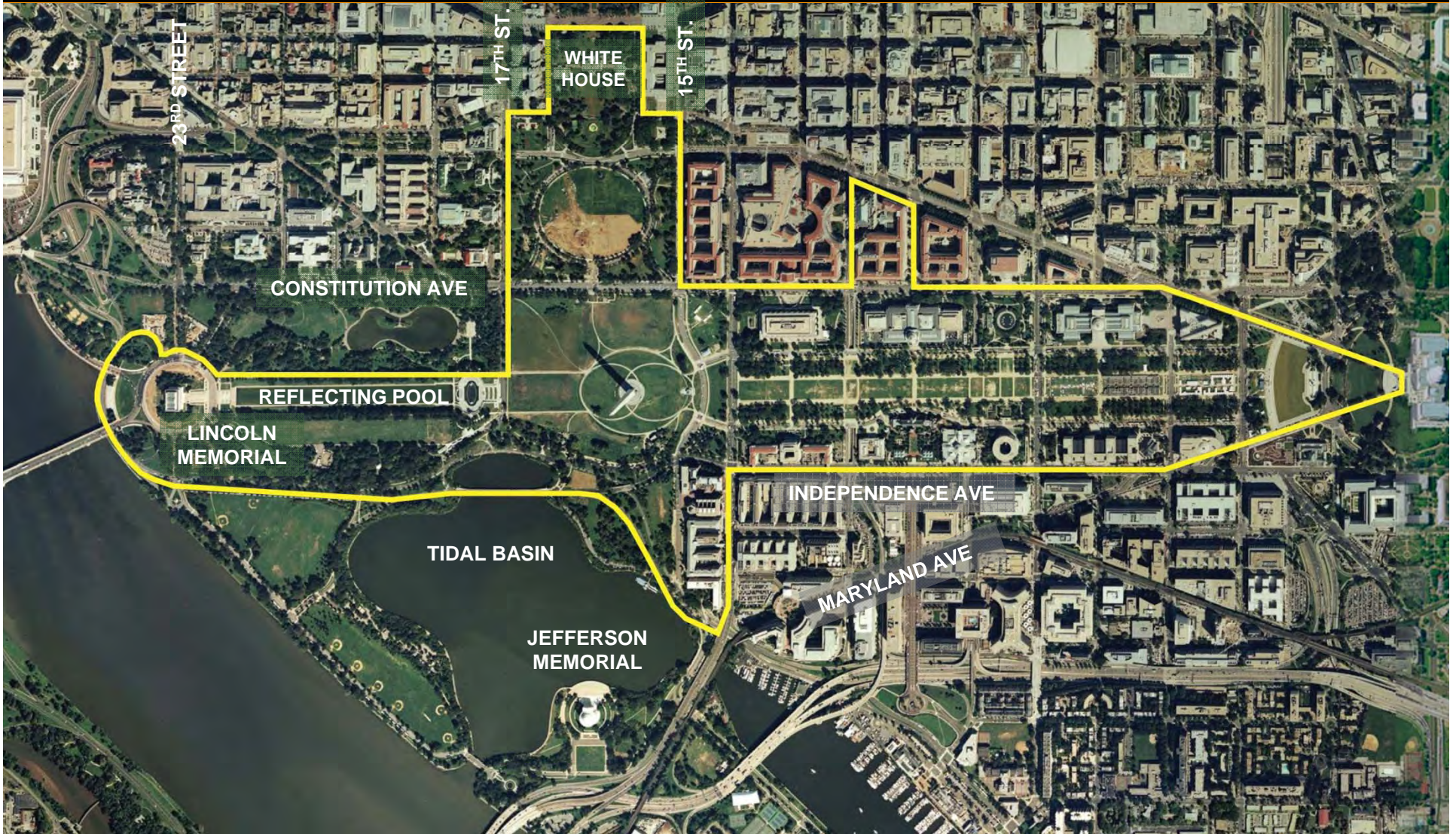
Section 106 regulations,
36 CFR Part 800

Process

1. Define Undertaking / Initiate Sec 106
2. Identify Consulting Parties
3. **Involve the Public**
4. Define Area of Potential Effect (APE)
5. Identify Significant Cultural Resources in APE
6. Assess Effects on Significant Resources
7. Apply Criteria Of Adverse Effect
8. Continue Consultation
9. Draft Agreement Document, if needed



Draft Area of Potential Effect



Section 106

NATIONAL REGISTER HISTORIC DISTRICTS



THE Louis Berger Group, INC.



Section 106

CULTURAL LANDSCAPES



Proposed Actions

The purpose of the proposed actions is to improve the security of the Monument in a manner that maintains and preserves the visitor experience and cultural landscape of the Monument grounds.

As the primary memorial to the nation's first president, the Monument is one of the most prominent icons in the nation and is toured by approximately one million visitors annually with many more visiting the surrounding grounds. Its popularity, combined with its status as an icon, makes it a potential target for terrorist attack. A permanent perimeter vehicular barrier system was completed with landscape improvements in 2006. The visitor screening facility that was also constructed at that time was temporary. Action is needed to complete the comprehensive security improvements.

