



IN REPLY REFER TO:
L7615(YOSE-PM)

United States Department of the Interior

NATIONAL PARK SERVICE

Yosemite National Park
P. O. Box 577
Yosemite, California 95389

Memorandum

To: Jesse McGahey, Project Manager, Yosemite National Park

From: Superintendent, Yosemite National Park

Subject: NEPA and NHPA Clearance: 2010-066 Annual Yosemite Facelift Parkwide Volunteer Event (32145)

The Leadership Team has reviewed the proposed project/action and completed its environmental assessment documentation, and we have determined that there:

- Will not be any effect on threatened, endangered, or rare species and/or their critical habitat.
- Will not be any adverse effect on historical, cultural, or archeological resources
- Will not be serious or long-term undesirable environmental or visual effects.

The subject proposed project therefore, is now cleared for all NEPA and NHPA compliance requirements as presented above. Project plans and specifications are approved and construction and/or project implementation can commence.

Describe the category used to exclude action from further NEPA analysis and indicate the number of the category (see Section 3-4 of DO-12):

E.4 Removal of non-historic materials and structures in order to restore natural conditions.

For the proposed project actions to be within compliance requirements during construction and/or project implementation, the following mitigations must be adhered to:

- Implement educational orientation and volunteer archeological monitoring.

If you have any questions, please let me know.

_____\ \ *Don L. Neubacher* \ \ _____

Don L. Neubacher

Enclosure (with attachments)

cc: Statutory Compliance File

*The signed original of this document is on file at
the Environmental Planning and Compliance
Office in Yosemite National Park.*



National Park Service
U.S. Department of the Interior

Yosemite National Park
Date: 09/14/2010

Categorical Exclusion Form

Project: 2010-066 Annual Yosemite Facelift Parkwide Volunteer Event

PEPC Project Number: 32145

Project Description:

This project allows for the seventh annual Yosemite Facelift, a volunteer-based, park wide trash removal and restoration event corresponding with National Public Lands Day. The National Park Service supports the Facelift logistics, clean-up, and restoration components and insures compliance of the various aspects of the Facelift.

The project proposal is comprised of two parts; a park wide trash removal, and several special projects. Park-wide trash removal describes the work that the majority of event volunteers will participate in, while the special projects will have assigned NPS personnel supervising activities and will require more intensive coordination. The special projects selected for the 2010 Facelift are; Ahwahnee – Concrete Removal, Glacier Point Debris Removal, Inspiration Point – Wooden and Metal Tower Deconstruction and Removal, Nevada Falls – Utilities Debris and Metal Wire Cleanup, New Diversions – Metal Barrel Removal, Hwy 41 – RV Accident Debris, Tunnel View – Debris and Trash Below Overlook

This year's Facelift will continue to improve educational components to encourage volunteer stewardship and resource protection both in National Parks and in the volunteer's home areas. Each volunteer must sign-up each day worked at the event registration center located in front of the Yosemite Valley Visitor Center, Tuolumne Store Parking Area, and Crane Flat. The registration centers will be open from 8am to 5pm each day of the event.

- A strong cultural resource education program will be provided to public volunteers and park staff involved in the Facelift project. The following procedures will be implemented during and before the Facelift.
- Supervisors of special projects will be made aware of cultural resource issues within their project areas and receive cultural resource education. This will include daily archeology briefings and involvement in site monitoring and condition assessments. Volunteers that have shown leadership qualities in past Facelifts will receive a half day cultural resource training and will lead roadside clean-up crews and be responsible to identify and GPS potential historic artifacts.
- Volunteers will attend a cultural resource education. Volunteers will speak with park archeology staff, interact with cultural resource displays, and receive historic resource identification guides.

Qualified staff will direct volunteers to specific areas to clean-up and away from culturally sensitive locations.

- A large map will be displayed at this station which will be marked with the designated clean-up location of each volunteer group. Maps will also be given to volunteers showing areas where they must avoid collecting trash. In some cases, a group leader with resource education training will accompany volunteers working in potentially sensitive areas.
- Volunteers will return to the registration centers where trash will be weighed and separated for recyclables. All trash (except that with human waste) collected by volunteers will be sorted by trained archeologists to identify any cultural resources. Any cultural resources will be documented and collected for curation or documented and discarded according to research potential.
- Prior to the event, comprehensive cultural resource assessments for areas of potential effect, including special project areas and high-use areas, such as road, trail, and river corridors will be conducted. Assessments will include records searches (of associated historical references, site and survey databases, and cultural resource reports), archeological survey, inventory, documentation, and monitoring (where necessary), consultation with interested parties, and prescription of treatment recommendations for resource protection (such as avoidance, monitoring, volunteer stewardship, and education).

Project Location:

Mariposa, Tuolumne Counties, CA

Mitigation:

- Implement educational orientation and volunteer archeological monitoring.

Describe the category used to exclude action from further NEPA analysis and indicate the number of the category (see Section 3-4 of DO-12):

E.4 Removal of non-historic materials and structures in order to restore natural conditions.

On the basis of the environmental impact information in the statutory compliance file, with which I am familiar, I am categorically excluding the described project from further NEPA analysis. No exceptional circumstances or conditions in Section 3-6 apply, and the action is fully described in Section 3-4 of DO-12.

Park Superintendent \\ Don L. Neubacher \\

Date 9/22/10

*The signed original of this document is on file at
the Environmental Planning and Compliance
Office in Yosemite National Park.*



National Park Service
U.S. Department of the Interior

Yosemite National Park
Date: 09/14/2010

ENVIRONMENTAL SCREENING FORM (ESF)

DO-12 APPENDIX 1a

Date Form Initiated: 09/08/2010

Updated May 2007 - per 2004 Departmental Manual revisions and proposed Director's Order 12 changes

A. PROJECT INFORMATION

Park Name: Yosemite National Park
Project Title: 2010-066 Annual Yosemite Facelift Parkwide Volunteer Event
PEPC Project Number: 32145
Project Type: Volunteer Clean-up (OTHER)
Project Location: County, State: Mariposa, Tuolumne, California
Project Leader: Jesse McGahey

Background information attached? Yes

Is project a hot topic (controversial or sensitive issues that should be brought to attention of Regional Director)? No

B. RESOURCE EFFECTS TO CONSIDER:

Identify potential effects to the following physical, natural, or cultural resources	No Effect	Negligible Effects	Minor Effects	Exceeds Minor Effects	Data Needed to Determine/Notes
1. Geologic resources – soils, bedrock, streambeds, etc.		Negligible			Concrete will be removed with up to one foot deep soil disturbance.
2. From geohazards	No				
3. Air quality		Negligible			Minimal air emissions are associated with the facelift project.
4. Soundscapes		Negligible			Negligible equipment noises will be temporary throughout the clean up project.

Identify potential effects to the following physical, natural, or cultural resources	No Effect	Negligible Effects	Minor Effects	Exceeds Minor Effects	Data Needed to Determine/Notes
5. Water quality or quantity	No				
6. Streamflow characteristics	No				
7. Marine or estuarine resources	No				
8. Floodplains or wetlands	No				
9. Land use, including occupancy, income, values, ownership, type of use	No				
10. Rare or unusual vegetation – old growth timber, riparian, alpine	No				
11. Species of special concern (plant or animal; state or federal listed or proposed for listing) or their habitat	No				
12. Unique ecosystems, biosphere reserves, World Heritage Sites	No				Yosemite National Park is a World Heritage Site.
13. Unique or important wildlife or wildlife habitat	No				
14. Unique or important fish or fish habitat	No				
15. Introduce or promote non-native species (plant or animal)	No				
16. Recreation resources, including supply, demand, visitation, activities, etc.	No				
17. Visitor experience, aesthetic resources	No				Visitor experience will be enhanced by less trash and debris in the park.
18. Archeological resources		Negligible			Project leaders are working with the park Archeology office to minimize or eliminate impacts.
19. Prehistoric/historic structure	No				
20. Cultural landscapes	No				

Identify potential effects to the following physical, natural, or cultural resources	No Effect	Negligible Effects	Minor Effects	Exceeds Minor Effects	Data Needed to Determine/Notes
21. Ethnographic resources	No				
22. Museum collections (objects, specimens, and archival and manuscript collections)	No				
23. Socioeconomics, including employment, occupation, income changes, tax base, infrastructure	No				
24. Minority and low income populations, ethnography, size, migration patterns, etc.	No				
25. Energy resources	No				
26. Other agency or tribal land use plans or policies	No				
27. Resource, including energy, conservation potential, sustainability	No				
28. Urban quality, gateway communities, etc.	No				
29. Long-term management of resources or land/resource productivity	No				
30. Other important environment resources (e.g. geothermal, paleontological resources)?	No				

C. MANDATORY CRITERIA

Mandatory Criteria: If implemented, would the proposal:	Yes	No	N/A	Comment or Data Needed to Determine
A. Have significant impacts on public health or safety?		No		
B. Have significant impacts on such natural resources and unique geographic characteristics as historic or cultural resources; park, recreation, or refuge lands; wilderness areas; wild or scenic rivers; national natural		No		

Mandatory Criteria: If implemented, would the proposal:	Yes	No	N/A	Comment or Data Needed to Determine
landmarks; sole or principal drinking water aquifers; prime farmlands; wetlands (Executive Order 11990); floodplains (Executive Order 11988); national monuments; migratory birds; and other ecologically significant or critical areas?				
C. Have highly controversial environmental effects or involve unresolved conflicts concerning alternative uses of available resources (NEPA section 102(2)(E))?		No		
D. Have highly uncertain and potentially significant environmental effects or involve unique or unknown environmental risks?		No		
E. Establish a precedent for future action or represent a decision in principle about future actions with potentially significant environmental effects?		No		
F. Have a direct relationship to other actions with individually insignificant, but cumulatively significant, environmental effects?		No		
G. Have significant impacts on properties listed or eligible for listing on the National Register of Historic Places, as determined by either the bureau or office?		No		
H. Have significant impacts on species listed or proposed to be listed on the List of Endangered or Threatened Species, or have significant impacts on designated Critical Habitat for these species?		No		
I. Violate a federal law, or a state, local, or tribal law or requirement imposed for the protection of the environment?		No		
J. Have a disproportionately high and adverse effect on low income or minority populations (Executive Order 12898)?		No		
K. Limit access to and ceremonial use of Indian sacred sites on federal lands by Indian religious practitioners or significantly adversely affect the physical integrity of such		No		

Mandatory Criteria: If implemented, would the proposal:	Yes	No	N/A	Comment or Data Needed to Determine
sacred sites (Executive Order 13007)?				
L. Contribute to the introduction, continued existence, or spread of noxious weeds or non-native invasive species known to occur in the area or actions that may promote the introduction, growth, or expansion of the range of such species (Federal Noxious Weed Control Act and Executive Order 13112)?		No		

For the purpose of interpreting these procedures within the NPS, any action that has the potential to violate the NPS Organic Act by impairing park resources or values would constitute an action that triggers the DOI exception for actions that threaten to violate a federal law for protection of the environment.

D. OTHER INFORMATION

Are personnel preparing this form familiar with the site? Yes

Did personnel conduct a site visit? No

Is the project in an approved plan such as a General Management Plan or an Implementation Plan with an accompanying NEPA document? No

Are there any interested or affected agencies or parties? No

Has consultation with all affected agencies or tribes been completed? Yes

Are there any connected, cumulative, or similar actions as part of the proposed action? (e.g., other development projects in area or identified in GMP, adequate/available utilities to accomplish project)? No

E. INTERDISCIPLINARY TEAM SIGNATORIES

<u>Interdisciplinary Team</u>	<u>Field of Expertise</u>
Don L. Neubacher	Superintendent
Kathleen Morse	Chief of Planning
Mark Butler	Chief of Project Management
Katariina Tuovinen	Chief of Administration Management
Ed Walls	Chief of Facilities Management
Niki Nicholas	Chief of Resources Management & Science
Marty Nielson	Chief of Business and Revenue Management
Tom Medema	Chief of Interpretation and Education
Charles Cuvelier	Chief of Visitor and Resource Protection
Jesse McGahey	Project Leader
Elexis Mayer	Environmental Planning and Compliance Program Manager
Jeannette Simons	NHPA Specialist
Renea Kennec	NEPA Specialist

F. SUPERVISORY SIGNATORY

Based on the environmental impact information contained in the statutory compliance file and in this

environmental screening form, environmental documentation for this stage of the subject project is complete.

Recommended:

Compliance Specialists	Date
<u> // Renea Kennec \ </u> Compliance Specialist – Renea Kennec	<u> 9-22-2010 </u>
<u> // Elexis Mayer // </u> Compliance Program Manager – Elexis Mayer	<u> 9-22-2010 </u>
<u> // Mark A Butler // </u> Chief, Project Management – Mark Butler	<u> 9-22-2010 </u>

Approved:

Superintendent	Date
<u> \\ Don L. Neubacher \\ </u> Don L. Neubacher	<u> 9-22-2010 </u>

*The signed original of this document is on file at
the Environmental Planning and Compliance
Office in Yosemite National Park.*



National Park Service
U.S. Department of the Interior

Yosemite National Park
Date: 09/15/2010

PARK ESF ADDENDUM

Today's Date: **September 15, 2010**

PROJECT INFORMATION

Park Name: Yosemite National Park
Project Title: Annual Yosemite Facelift Parkwide Volunteer Event
PEPC Project Number: 32145
Project Type: Volunteer Clean-up (OTHER)
Project Location: County, State: Mariposa, Tuolumne, California
Project Leader: Jesse McGahey

PARK ESF ADDENDUM QUESTIONS & ANSWERS

ESF Addendum Questions	Yes	No	N/A	Data Needed to Determine/Notes
SPECIAL STATUS SPECIES CHECKLIST				
1. Listed or proposed threatened or endangered species (Federal or State)?		X		
2. Species of special concern (Federal or State)?		X		
3. Park rare plants or vegetation?		X		
4. Potential habitat for any special-status species listed above?		X		
NATIONAL HISTORIC PRESERVATION ACT CHECKLIST				
5. Entail ground disturbance?	X			Concrete removal will impact soils up to one foot deep.
6. Are any archeological or ethnographic sites located within the area of potential effect?	X			
7. Entail alteration of a historic structure or cultural landscape?		X		

ESF Addendum Questions	Yes	No	N/A	Data Needed to Determine/Notes
8. Has a National Register form been completed?			X	
9. Are there any structures on the park's List of Classified Structures in the area of potential effect?		X		
WILD AND SCENIC RIVERS ACT CHECKLIST				
10. Fall within a wild and scenic river corridor? (Name the river corridor)	X			Merced and Tuolumne River corridors.
11. Fall within the bed and banks AND will affect the free-flow of the river?		X		
12. Have the possibility of affecting water quality of the area?		X		
13. Remain consistent with its river segment classification?	X			
14. Fall on a tributary of a Wild and Scenic River?	X			This project is parkwide.
15. Will the project encroach or intrude upon the Wild and Scenic River corridor?		X		
16. Will the project unreasonably diminish scenic, recreational, or fish and wildlife values?		X		
17. Consistent with the provisions in the Merced River Plan Settlement Agreement?	X			
WILDERNESS ACT CHECKLIST				
18. Within designated Wilderness?	X			Some projects are in Wilderness and comply with the Wilderness Act.
19. Within a Potential Wilderness Addition?		X		

Project Background

The annual “Yosemite Facelift” is a volunteer-based, park wide trash removal and restoration event corresponding with National Public Lands Day. The project is sponsored by the Yosemite Climbing Association (YCA), a non-profit organization. This will be the 7th Annual Yosemite Facelift. First initiated in 2003 by the Yosemite climbing community, the Facelift has grown into a hugely successful, family oriented, park-wide annual event that is supported by park operations.

The Yosemite Facelift has grown over the past six years into one of the premier NPLD events with up to 2,945 volunteers in 2007 contributing 18,335 hours (estimated value over of \$366,000), and collected up to 42,330 pounds. The Facelift organizers would like to see the weight metrics gradually decrease as a sign of the long-term success of the event. The expected number of total volunteer days for the 2010 Yosemite Facelift over the course of the 5 day event is approximately 2,000-2,500.

Project Description

The project proposal is comprised of two parts: (1) park wide trash removal, and (2) special projects. Park-wide trash removal describes the work that the majority of event volunteers will participate in, while the special projects will have assigned NPS personnel supervising activities and will require more intensive coordination. This year’s Facelift will continue to improve educational components to encourage volunteer stewardship and resource protection both in National Parks and in the volunteer’s home areas. The check-in registration process will be consistent for all volunteers. Each volunteer must sign-up each day worked at the event registration center located in front of the Yosemite Valley Visitor Center, Tuolumne Store Parking Area, and Crane Flat. The registration centers will be open from 8am to 5pm each day of the event.

- The check-in and registration process begins with each participant filling out required volunteer program forms. From there, volunteers will travel through resource education stations with interactive displays and have verbal contact with NPS staff.
- Event coordinators will work with each volunteer to identify the areas to be canvassed. In some cases, a geographical area or section of roadway will have an assigned group leader that has received resource education training and will accompany the group. (See cultural resources section below.)
- The final stage of the check-in and registration process is the safety and equipment pick-up area where all volunteers will have contact with a safety officer, prior to receiving gloves, vest, and trash bags (or trash buckets).
- After returning for weighing and recycling collected materials, each volunteer receives one raffle ticket for each day worked. There will be daily raffles conducted by YCA from prizes donated by various retailers, vendors, and non-profits. On the last day of the event (Sunday) a reception will be held in the Yosemite Valley East Auditorium; serving dinner and beverages to up to 400 people.

Cultural and Archaeological Resource Education Program

- The Facelift planning team realizes that the nature of the Facelift event poses a threat to cultural resources and specifically historic artifacts. Therefore we are working closely with the Anthropology and Archeology Branch to minimize and hopefully eliminate impacts. A strong

cultural resource education program will be provided to public volunteers and park staff involved in the Facelift project. The following procedures will be implemented during and before the Facelift.

- Supervisors of special projects will be made aware of cultural resource issues within their project areas and receive cultural resource education. This will include daily archeology briefings and involvement in site monitoring and condition assessments. In addition, we will provide volunteers that have shown leadership qualities in past Facelifts with a half day cultural resource training. These volunteers will lead roadside clean-up crews and be responsible to identify and GPS potential historic artifacts.
- After the check-in and registration process, volunteers will travel through a cultural resource education station. Here volunteers will speak with NPS archeology staff, interact with cultural resource displays, and receive historic resource identification guides. In addition, qualified staff will direct volunteers to specific areas to clean-up and away from culturally sensitive locations.
- A large map will be displayed at this station which will be marked with the designated clean-up location of each volunteer group. Maps will also be given to volunteers showing areas where they must avoid collecting trash. In some cases, a group leader with resource education training will accompany volunteers working in potentially sensitive areas.
- After clean-up volunteers will return to the registration centers where trash will be weighed and separated for recyclables. Additionally, all trash (except that with human waste) collected by volunteers will be sorted by trained archeologists to identify any cultural resources. Any cultural resources will be documented and collected for curation or documented and discarded according to research potential.
- Prior to the event, comprehensive cultural resource assessments for areas of potential effect, including special project areas and high-use areas, such as road, trail, and river corridors will be conducted. Assessments will include records searches (of associated historical references, site and survey databases, and cultural resource reports), archeological survey, inventory, documentation, and monitoring (where necessary), consultation with interested parties, and prescription of treatment recommendations for resource protection (such as avoidance, monitoring, volunteer stewardship, and education).

Park-wide Trash Removal

Most of event volunteers are park visitors that sign-up spontaneously and will primarily be directed to focus on road corridors and pullouts, day-use areas, campgrounds and lodging areas, hiking trails and climbing routes. Emphasis will be placed on working from the periphery of the park boundary and working towards Yosemite Valley as the event progresses. Road corridors will be cleaned during the week to avoid weekend traffic.

2010 Special Projects

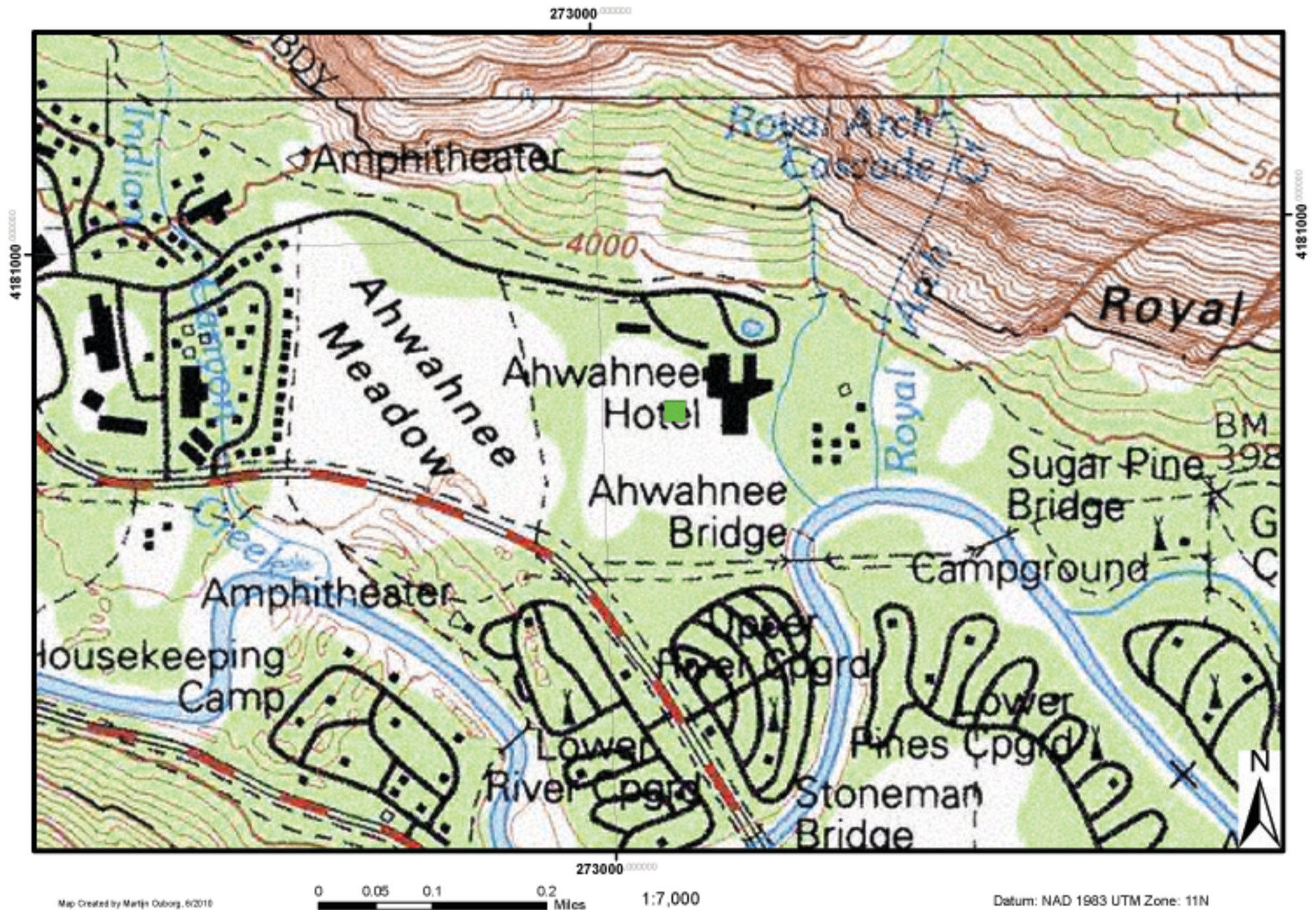
There are some special projects that remain from last year's proposed list that were approved through the NEPA process last year but not completed—to eliminate unnecessary redundancy not all of those projects will be included in this document. Other special projects have had compliance completed through previous projects, and Facelift volunteers will be providing labor to complete the work. Each project will be accompanied by NPS staff and logistical support. In many cases the volunteer base will be comprised

of organizations or pre-selected groups to ensure safety and efficacy. Site visits will be scheduled in July and August 2010 with NPS project leader and park archeology staff. If additional special projects are identified, subsequent compliance will be initiated.

Attached in separate internal documents are descriptions, photos, and maps of special projects that need compliance at this time.

Ahwahnee - Concrete Removal

National Park Service
U.S. Department of the Interior



Special Projects Records

Project: Ahwahnee Abandoned Man Hole Removal

Project Lead: Ken Yager

Compliance Lead: Ken Stowell

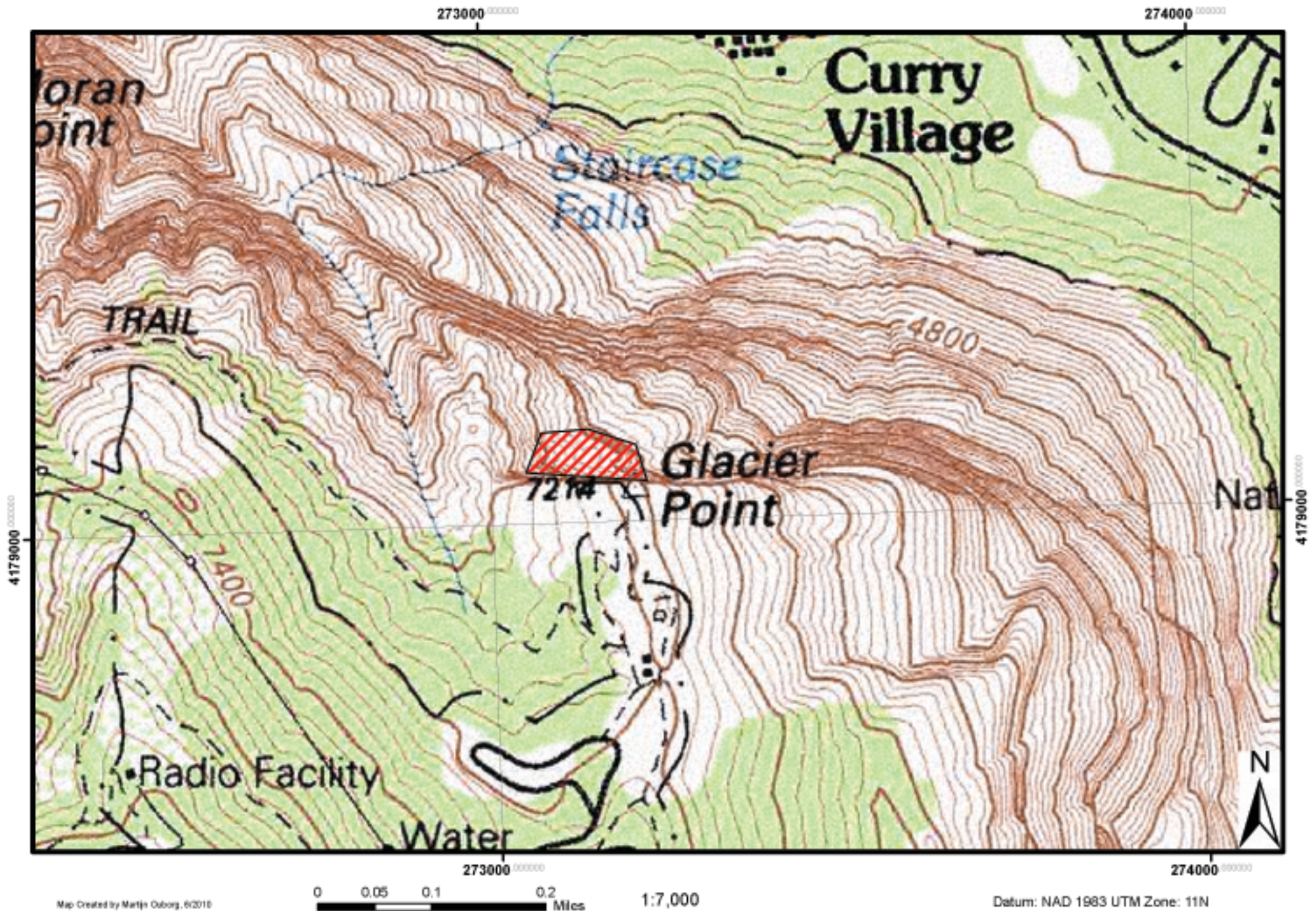
Project Summary: removal of abandoned cement near Ahwahnee

Date	Author	Notes/ updates
04/05/2010	Heather Boothe	Initial comments: suggested by Ken Yager
06/23/2010	Eric Bissell	Manhole no longer included in project. Site visit with Emily Darko and Jesse McGahey



Glacier Point - Debris and Trash Below Firefall

National Park Service
U.S. Department of the Interior



Special Projects Records

Project: Glacier Point Debris Removal

Project Lead: Max Edwards and Eric Bissell

Compliance Lead: Jesse McGahey and Eric Bissell

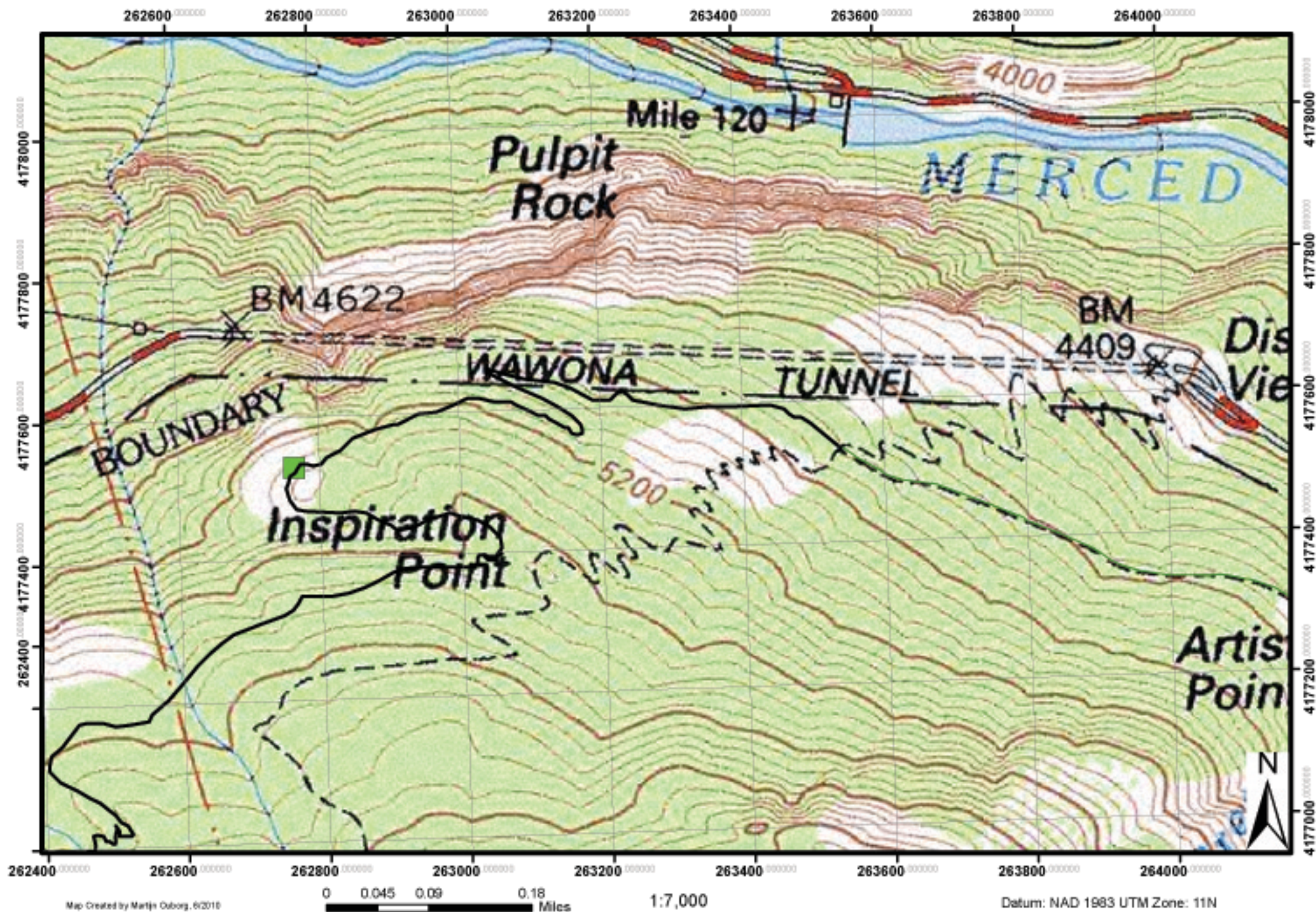
Project Summary: Removal of debris below Glacier Point at the old Fire Fall location.

Date	Author	Notes/ updates
04/05/2010	Heather Boothe	Initial comments: Needs climbers – steep terrain but probably no need to be roped. Needs safety plan to determine if roping required.
06/30/2010	Eric Bissell	Site visit with Emily Darko (archeology) on 6/30. Ropes will not be needed for safety of personnel, but may be employed for hauling trash to rim. Historic items in vicinity, in process of approval from archeology. Archeologist should be present during clean-up.



Inspiration Point - Wooden and Metal Tower

National Park Service
U.S. Department of the Interior



Special Projects Records

Project: Old Wawona Rd wooden and metal tower removal

Project Lead: Mark Fincher

Compliance Lead: Jesse McGahey and Mark Fincher

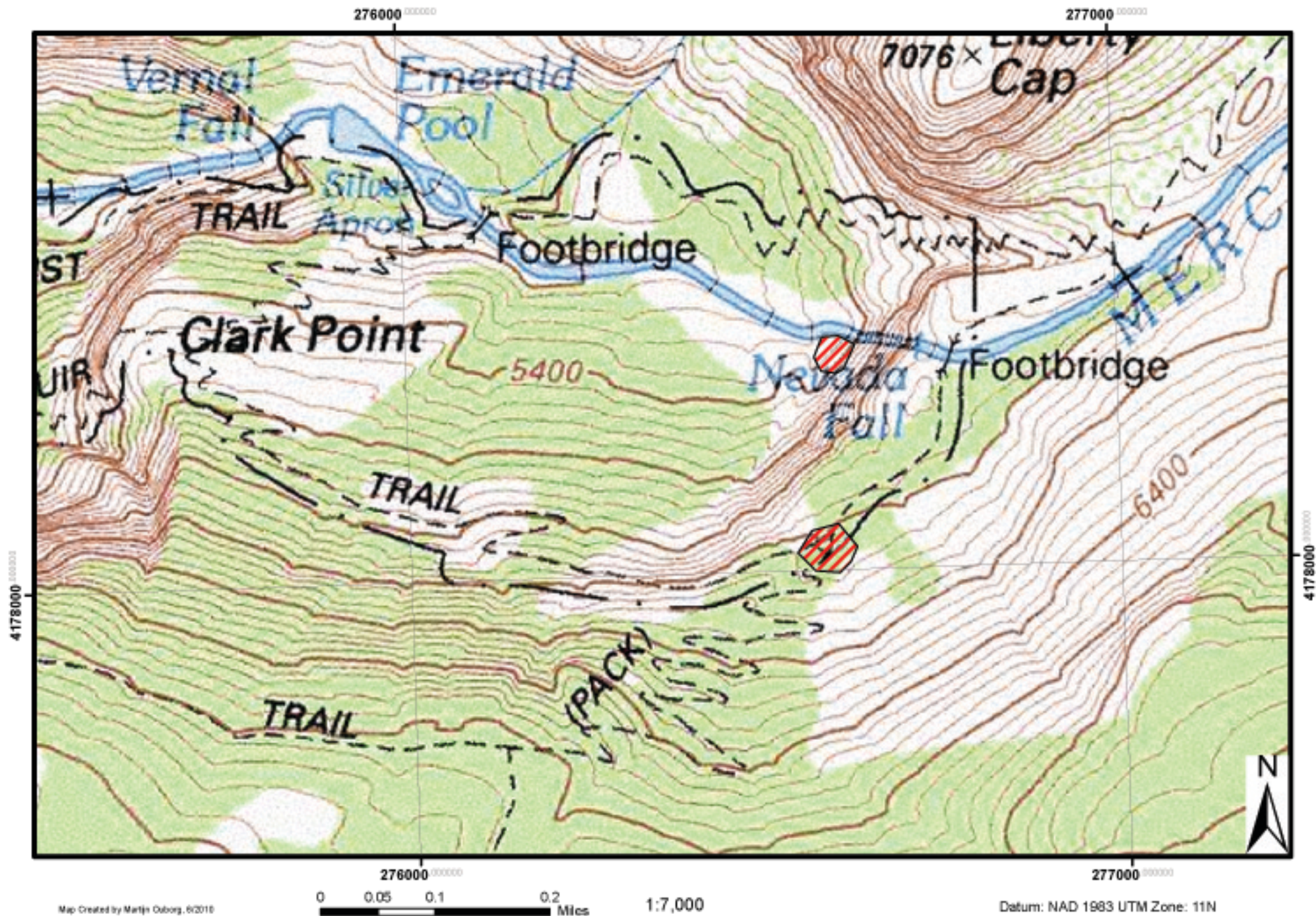
Project Summary: Deconstruction and removal of wooden and metal tower and trash along old Wawona Rd.

Date	Author	Notes/ updates
04/05/2010	Heather Boothe	Initial comments: Tower has been slated for removal.
06/29/2010	Eric Bissell	Site visit on 6/23. 2ft x 3ft wooden box on 8ft metal legs. Old cable-coil (50lbs) farther along road towards Turtleback. Approach from Tunnel view for tower, and Turtleback for coils.



Nevada Falls - Utilities Debris and Metal Wire

National Park Service
U.S. Department of the Interior



Special Projects Records

Project: Ice Cut/Nevada Falls Debris Removal

Project Lead: Jake Whittaker

Compliance Lead: Jesse McGahey

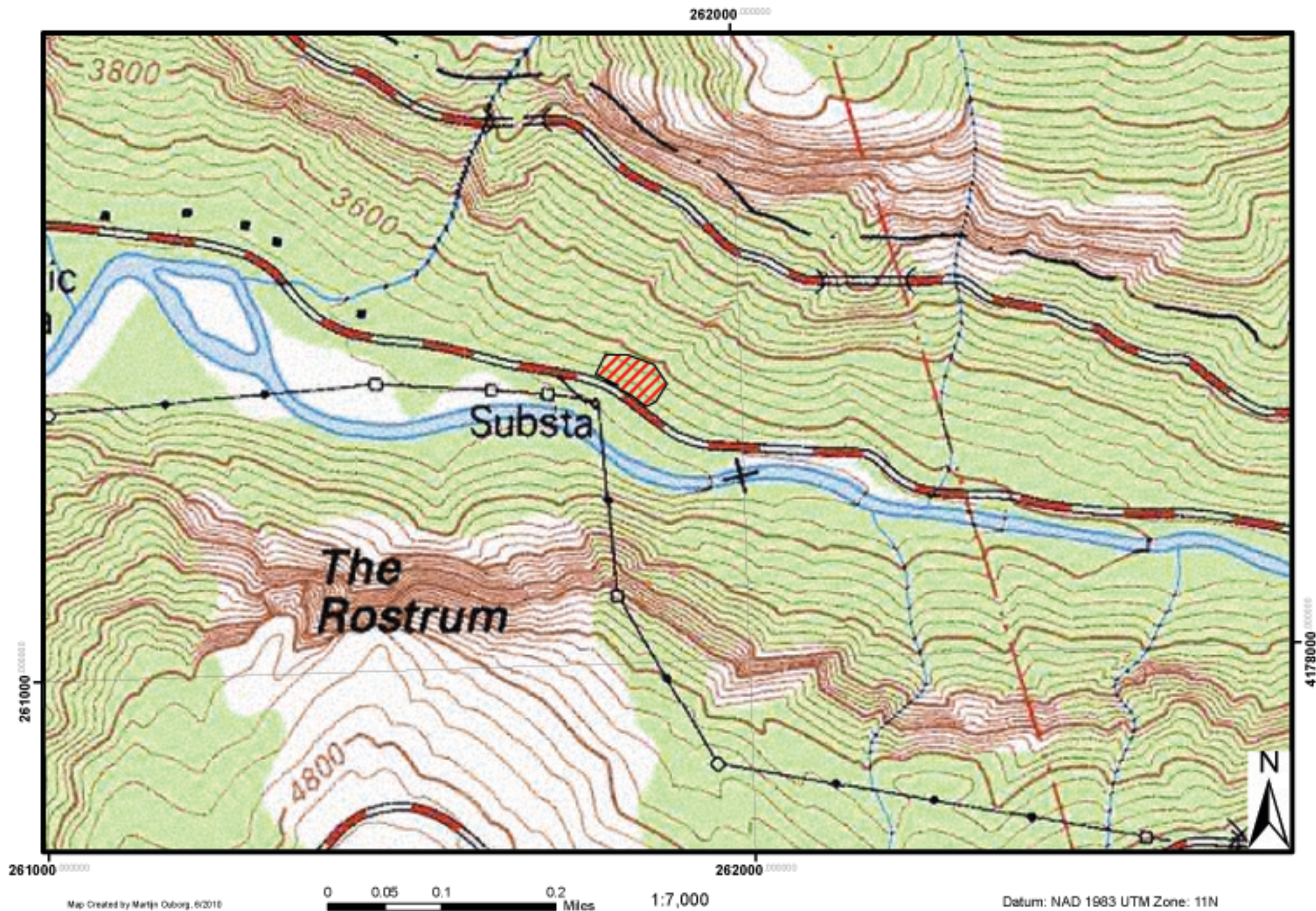
Project Summary: Removal of telephone wires from John Muir Trail/Panorama Jct. Thin gauge wire at the base of Nevada falls, approached from the Ice Cut, is also in the area.

Date	Author	Notes/ updates
04/05/2010	Heather Boothe	Initial comments: Dov submitted the project to remove old construction debris near the ice cut near Nevada Falls. EMS folks will do the legwork on the compliance in cooperation with archeology.
06/29/2010	Eric Bissell	Site visit to JMT/Panorama with Emily Darko on 6/24. May need to revisit thin wire at base of Nevada falls as we didn't make it all the way to that location. Historic trash discovered in vicinity.



New Diversions - Utilities and Metal Barrel

National Park Service
U.S. Department of the Interior



Special Projects Records

Project: New Diversions Approach Trail

Project Lead: Jesse McGahey

Compliance Lead: Jesse McGahey

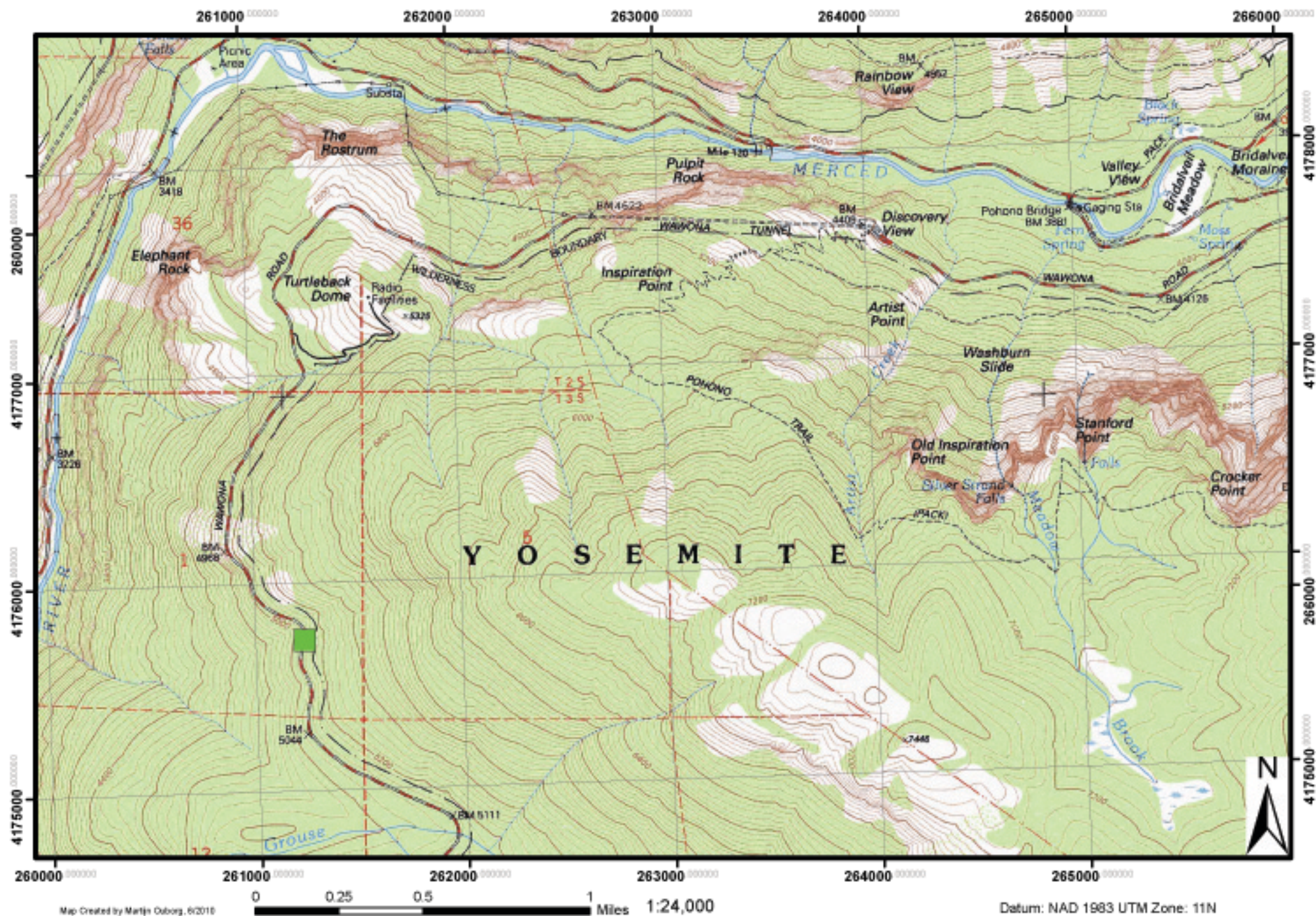
Project Summary: Removal of barrel and old phone line equipment no longer in use along New Diversions climbing route approach trail.

Date	Author	Notes/ updates
07/06/2010	Eric Bissell	Site visit with Jesse McGahey and Emily Darko on 6/23/2010. Need to follow up with Facilities and AT&T regarding phone equipment. Approved chainsaw operator will be needed to cut telephone phone.



Hwy 41 - RV Accident Debris

National Park Service
U.S. Department of the Interior



Special Projects Records

Project: Hwy 41 RV Debris Removal

Project Lead: Jesse McGahey

Compliance Lead: Jesse McGahey

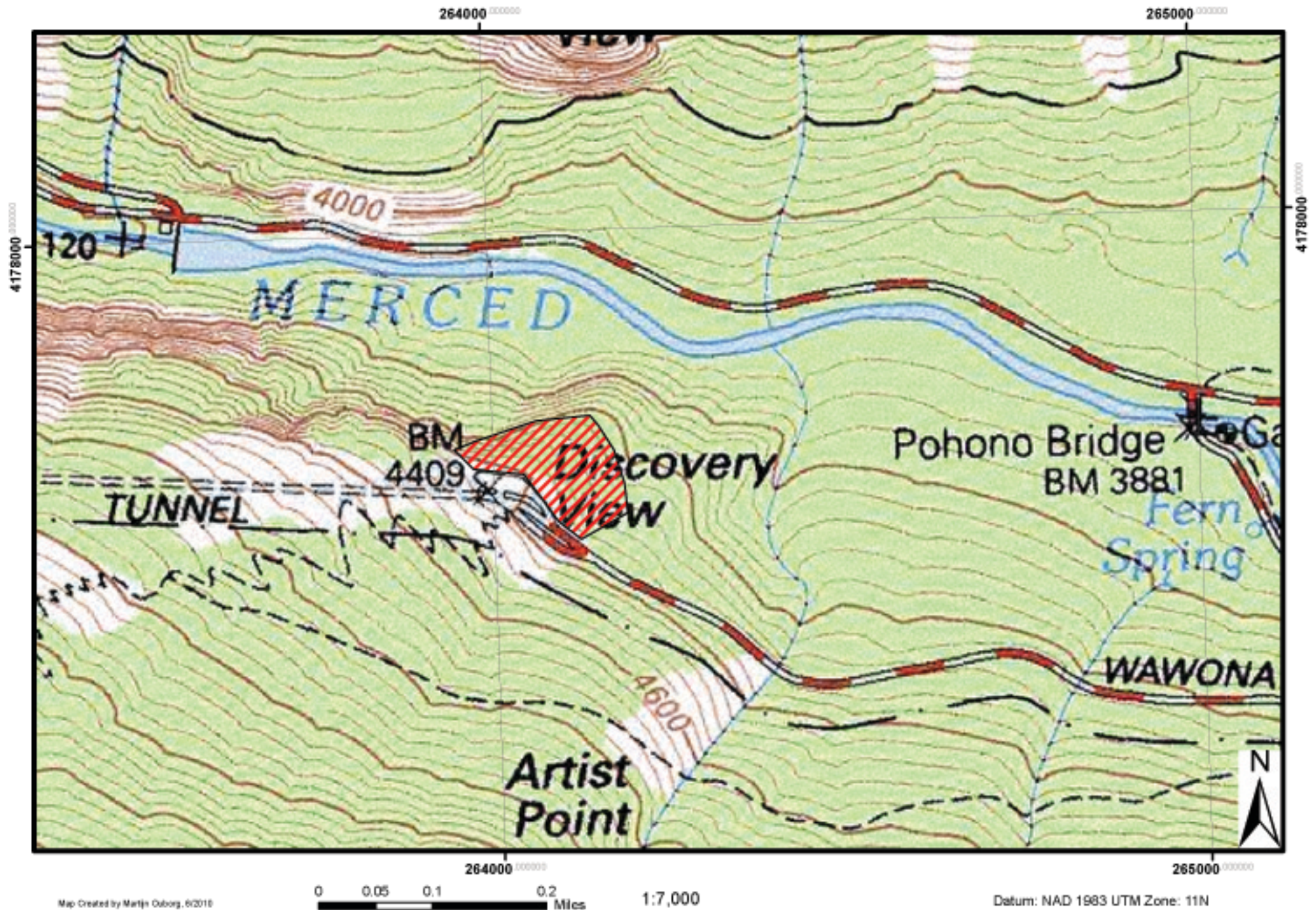
Project Summary: Removal of debris associated with an RV accident last year. Most has been cleaned up already, but some pieces remain.

Date	Author	Notes/ updates
04/05/2010	Heather Boothe	Initial comments: George Ridgley reported. Hazardous waste safety issues.
06/30/2010	Eric Bissell	Site visit with Emily Darko on 6/30.



Tunnel View - Debris and Trash Below Overlook

National Park Service
U.S. Department of the Interior



Special Projects Records

Project: Tunnel View cleanup below overlook.

Project Lead: Ken Yager

Compliance Lead: Jesse McGahey

Project Summary: Cleanup below Tunnel View of debris, Frisbees etc. Best approached from below due to steep hillsides.

Date	Author	Notes/ updates
04/05/2010	Heather Boothe	Initial comments: Approach from below to pick up things people drop/throw over the edge.
07/06/2010	Jesse McGahey	No site visit as of this date. Will visit with Archeology this month.



National Park Service
U.S. Department of the Interior

Yosemite National Park
Date: 09/08/2010

ASSESSMENT OF ACTIONS HAVING AN EFFECT ON CULTURAL RESOURCES

A. DESCRIPTION OF UNDERTAKING

1. **Park:** Yosemite National Park

Project Description:

- a. **Project Name:** 2010-066 Annual Yosemite Facelift Parkwide Volunteer Event
- b. **Date:** September 8, 2010
- c. **PEPC Project ID Number:** 32145

3. Has the area of potential effects been surveyed to identify cultural resources?

- ☐ No
- ☐ Yes, Source or reference:

☐ Check here if no known cultural resources will be affected. (If this is because area has been disturbed, please explain or attach additional information to show the disturbance was so extensive as to preclude intact cultural deposits.)

4. Potentially Affected Resource(s):

5. The proposed action will: (check as many as apply)

- ☐ Destroy, remove, or alter features/elements from a historic structure
- ☐ Replace historic features/elements in kind
- ☐ Add non-historic features/elements to a historic structure
- ☐ Alter or remove features/elements of a historic setting or environment (inc. terrain)
- ☐ Add non-historic features/elements (inc. visual, audible, or atmospheric) to a historic setting or cultural landscape
- ☐ Disturb, destroy, or make archeological resources inaccessible
- ☐ Disturb, destroy, or make ethnographic resources inaccessible
- ☐ Potentially affect presently unidentified cultural resources
- ☐ Begin or contribute to deterioration of historic features, terrain, setting, landscape elements, or archeological or ethnographic resources
- ☐ Involve a real property transaction (exchange, sale, or lease of land or structures)
- ☐ Other (please specify)

6. Measures to prevent or minimize loss or impairment of historic/prehistoric properties:

No Assessment of Effect mitigations identified

7. Supporting Study Data:

8. Attachments:

☐ Maps ☐ Archeological survey, if applicable ☐ Drawings ☐ Specifications ☐ Photographs
☐ Scope of Work ☐ Site plan ☐ List of Materials ☐ Samples ☐ Other:

Prepared by Date: **September 8, 2010** Title: Telephone:

B. REVIEWS BY CULTURAL RESOURCE SPECIALISTS

The park 106 coordinator requested review by the park's cultural resource specialist/advisors as indicated by check-off boxes or as follows:

☒ Archeologist
Name: Laura Kirn
Date: 07/14/2010
Comments:

Check if project does not involve ground disturbance ☐
Assessment of Effect: ☐ No Historic Properties Affected ☐ No Adverse Effect ☒ Adverse
Effect ☐ Streamlined Review
Recommendations for conditions or stipulations:
Project specific PA

Doc Method:
Standard 4-Step Process

No Reviews From: Curator, Historical Architect, Historian, 106 Advisor, Other Advisor, Anthropologist,
Historical Landscape Architect

C. PARK SECTION 106 COORDINATOR'S REVIEW AND RECOMMENDATIONS

1. Assessment of Effect:

_____ No Historic Properties Affected ☒ No Adverse Effect _____ Adverse Effect

2. Compliance requirements:

☐ A. STANDARD 36 CFR PART 800 CONSULTATION

Further consultation under 36 CFR Part 800 is needed.

☐ B. STREAMLINED REVIEW UNDER THE 2008 SERVICEWIDE PROGRAMMATIC AGREEMENT (PA)

The above action meets all conditions for a streamlined review under section III of the 2008 Servicewide PA for Section 106 compliance.

APPLICABLE STREAMLINED REVIEW Criteria
(Specify 1-16 of the list of streamlined review criteria.)

☐ C. PLAN-RELATED UNDERTAKING

Consultation and review of the proposed undertaking were completed in the context of a plan review process, in accordance with the 2008 Servicewide PA and 36 CFR Part 800.

Specify plan/EA/EIS: _____

☐ D. UNDERTAKING RELATED TO ANOTHER AGREEMENT

The proposed undertaking is covered for Section 106 purposes under another document such as a statewide agreement established in accord with 36 CFR 800.7 or counterpart regulations.

Specify: 1999 Programmatic Agreement

☐ E. COMPLIANCE REQUIREMENTS SATISFIED BY USE OF NEPA

Documentation is required for the preparation of an EA/FONSI or an EIS/ROD has been developed and used so as also to meet the requirements of 36 CFR 800.3 through 800.6

☐ F. No Potential to Cause Effects [800.3(a)(1)]

☐ G. STIPULATIONS/CONDITIONS

Following are listed any stipulations or conditions necessary to ensure that the assessment of effect above is consistent with 36 CFR Part 800 criteria of effect or to avoid or reduce potential adverse effects.

Recommended by Park Section 106 coordinator:

Signature of Historic Preservation Officer \\ Jeanette Simmons \\

Date: 9/21/10

D. SUPERINTENDENT'S APPROVAL

The proposed work conforms to the NPS *Management Policies* and *Cultural Resource Management Guideline*, and I have reviewed and approve the recommendations, stipulations, or conditions noted in Section C of this form.

Signature of Superintendent \\ Don L. Neubacher \\

Date: 9/22/10

*The signed original of this document is on file at
the Environmental Planning and Compliance
Office in Yosemite National Park.*