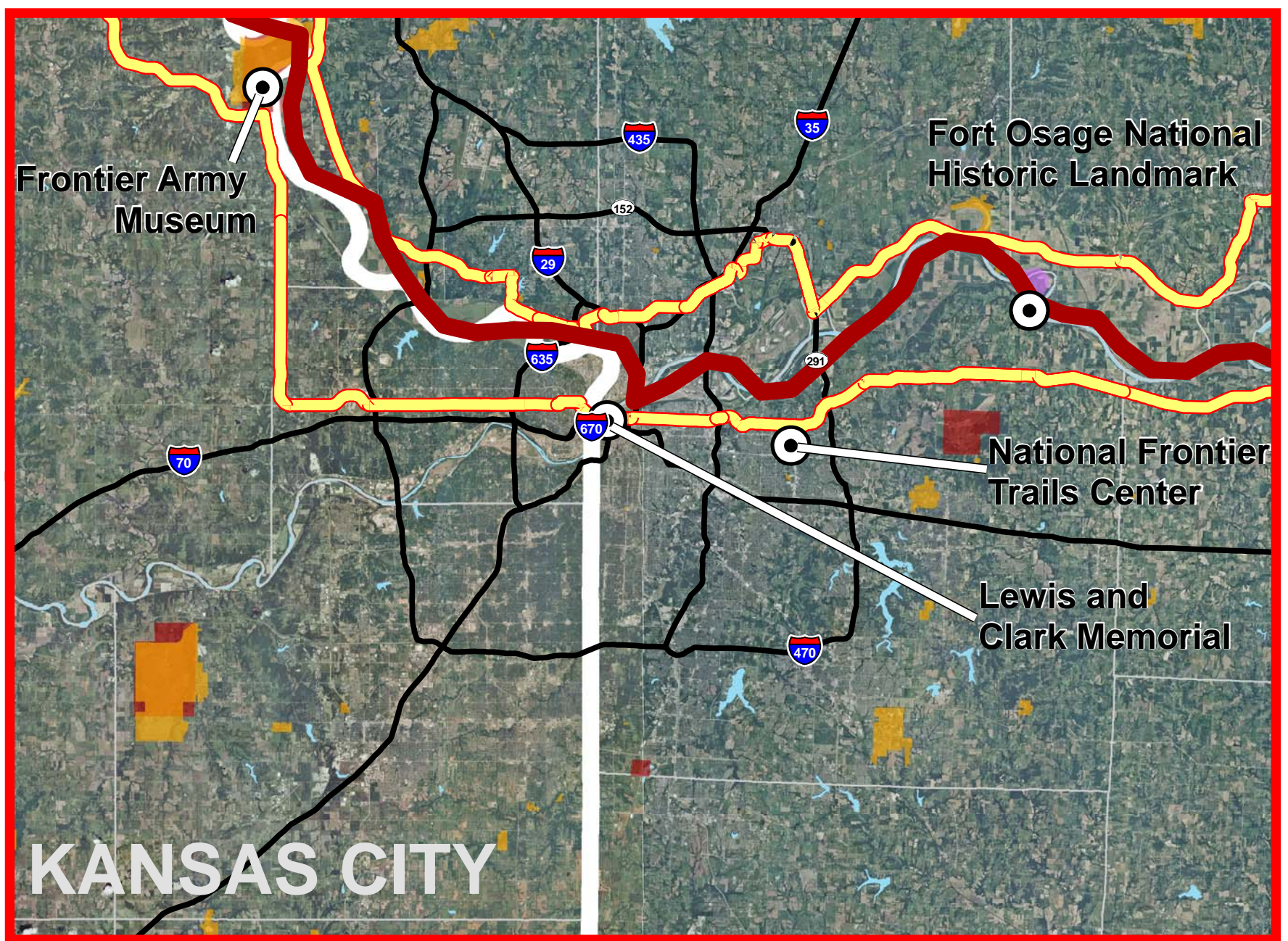
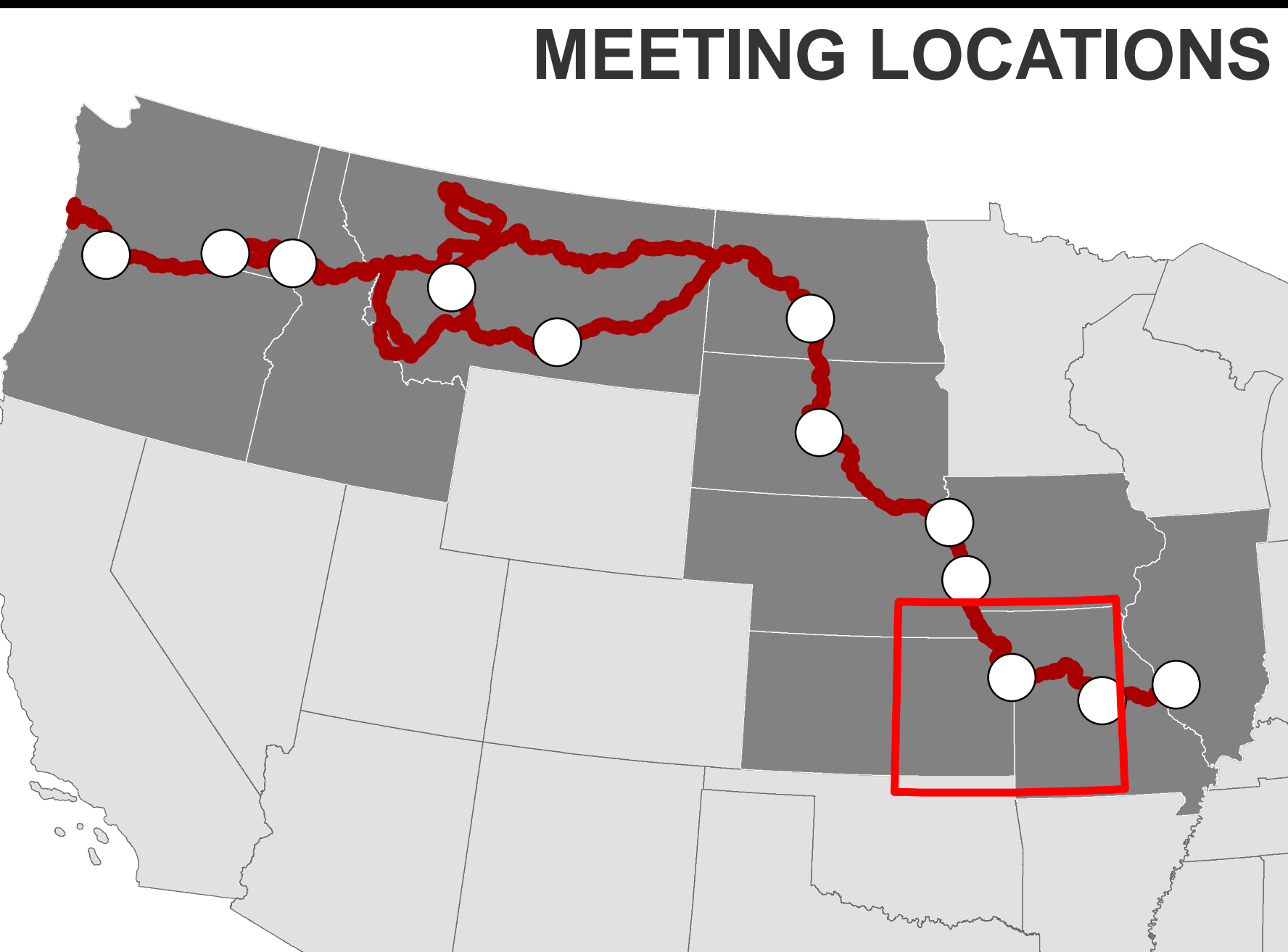
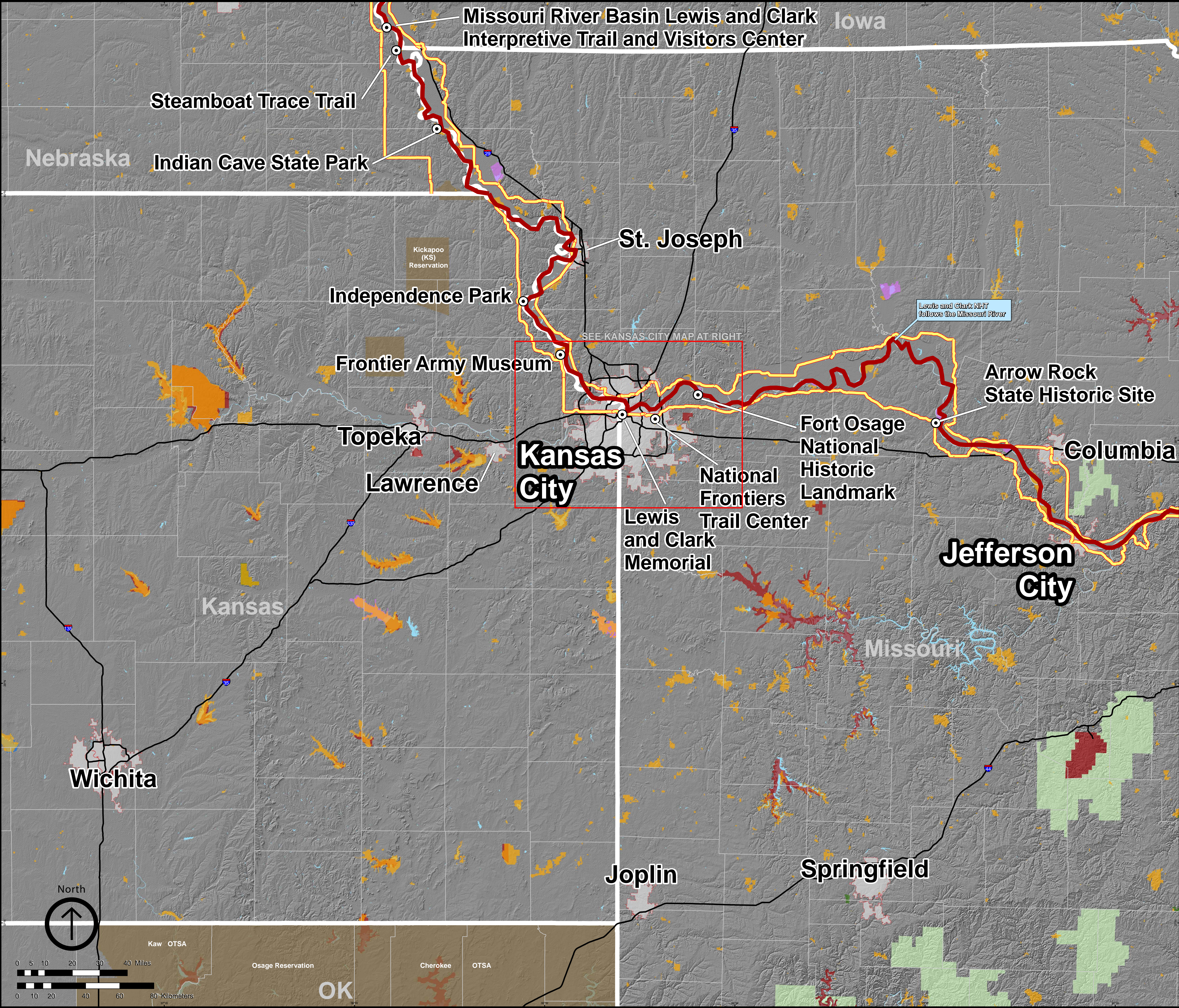




Public Scoping Meeting Location - Kansas City, KS - Kansas City Main Library



- Lewis and Clark National Historic Trail
 - Auto Tour Route
 - Urban Area
 - Trail Point of Interest
- Public Lands**
- State Lands
 - Tribal Lands
 - Bureau of Land Management
 - Bureau of Reclamation
 - Department of Defense
 - National Park Service
 - Forest Service
 - Fish and Wildlife Service
 - Other

SOURCE: U.S. Census, 2000; National Atlas, 2005

DISCLAIMER: The NPS makes no warranty, express or implied, related to the accuracy or content of this map.