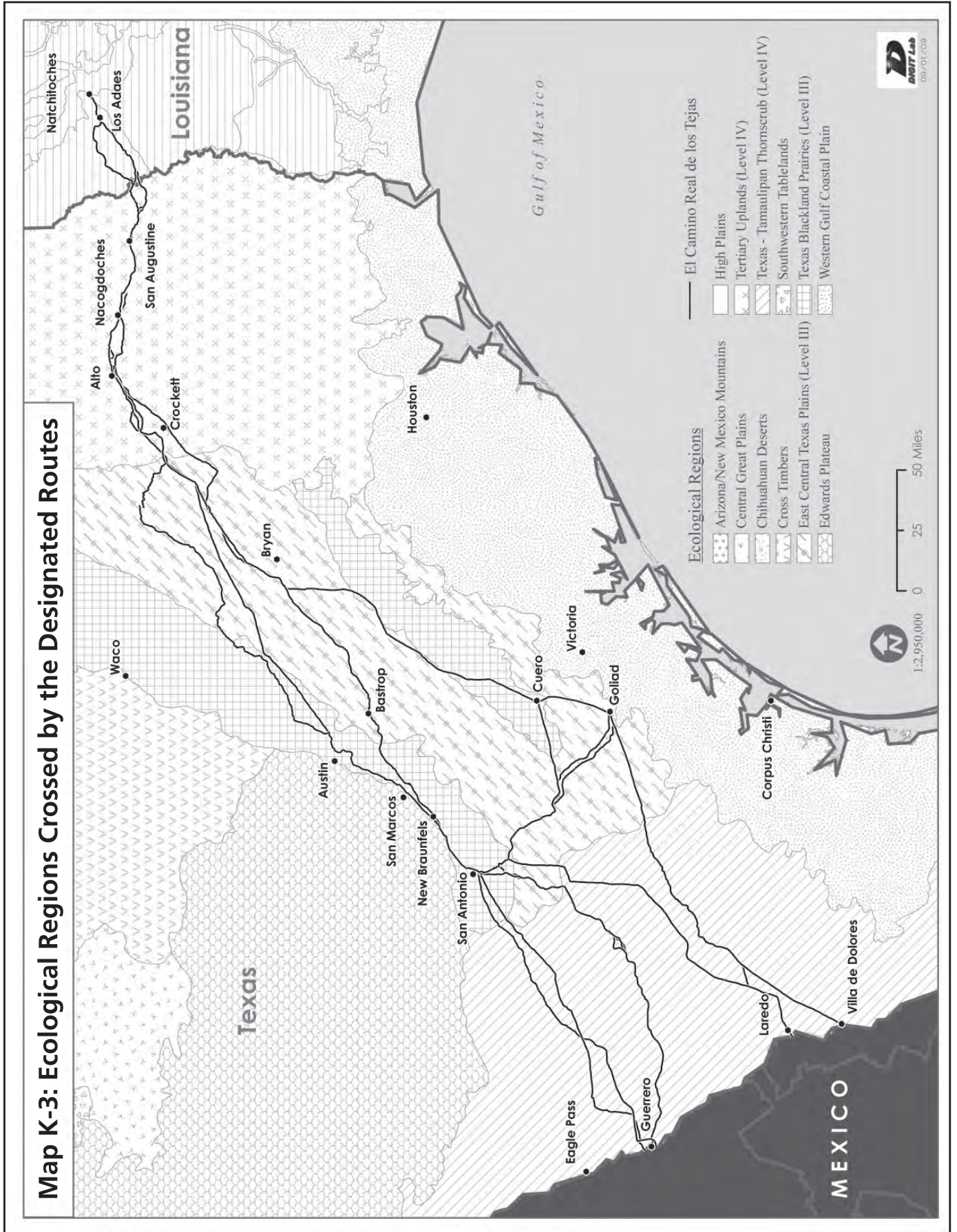
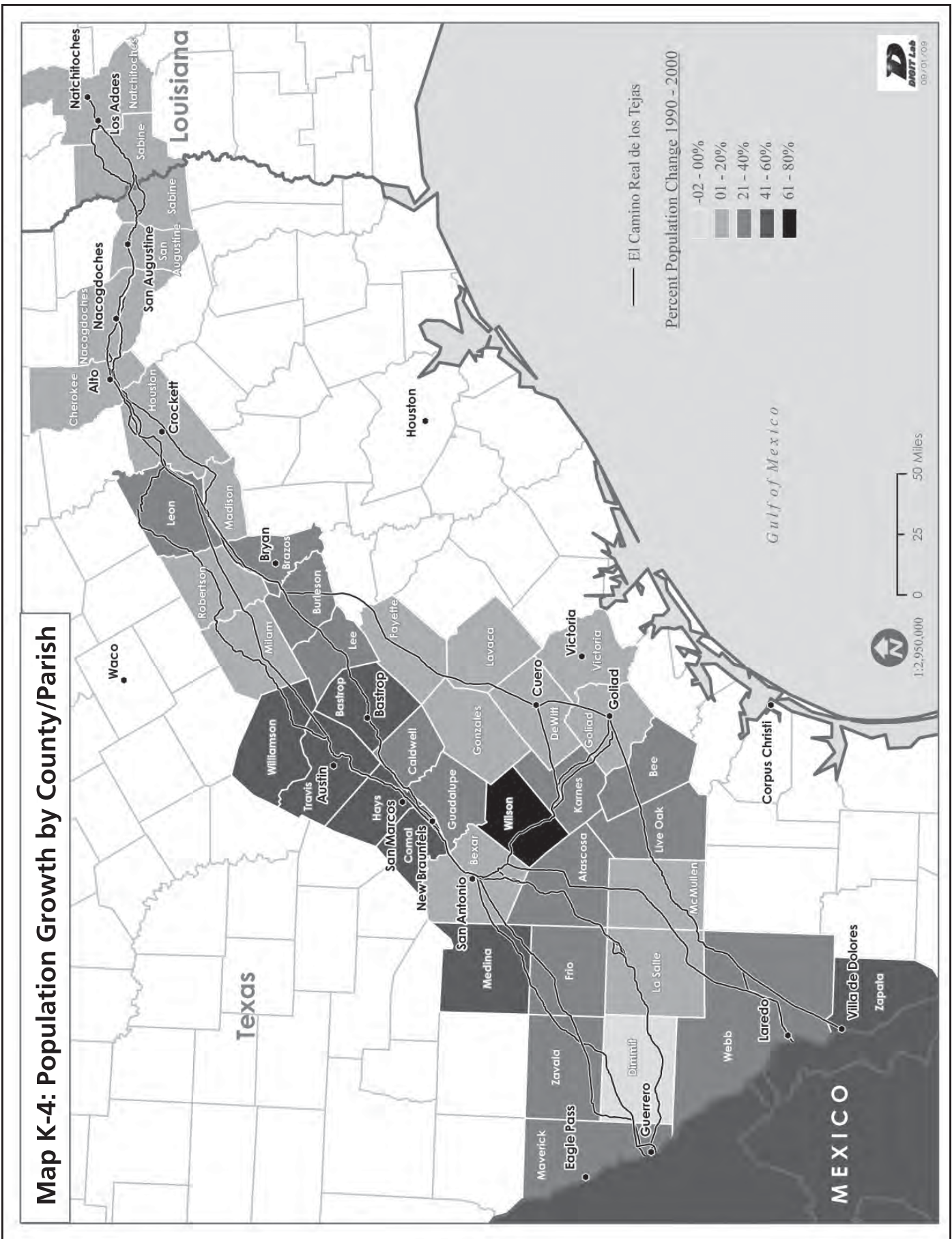


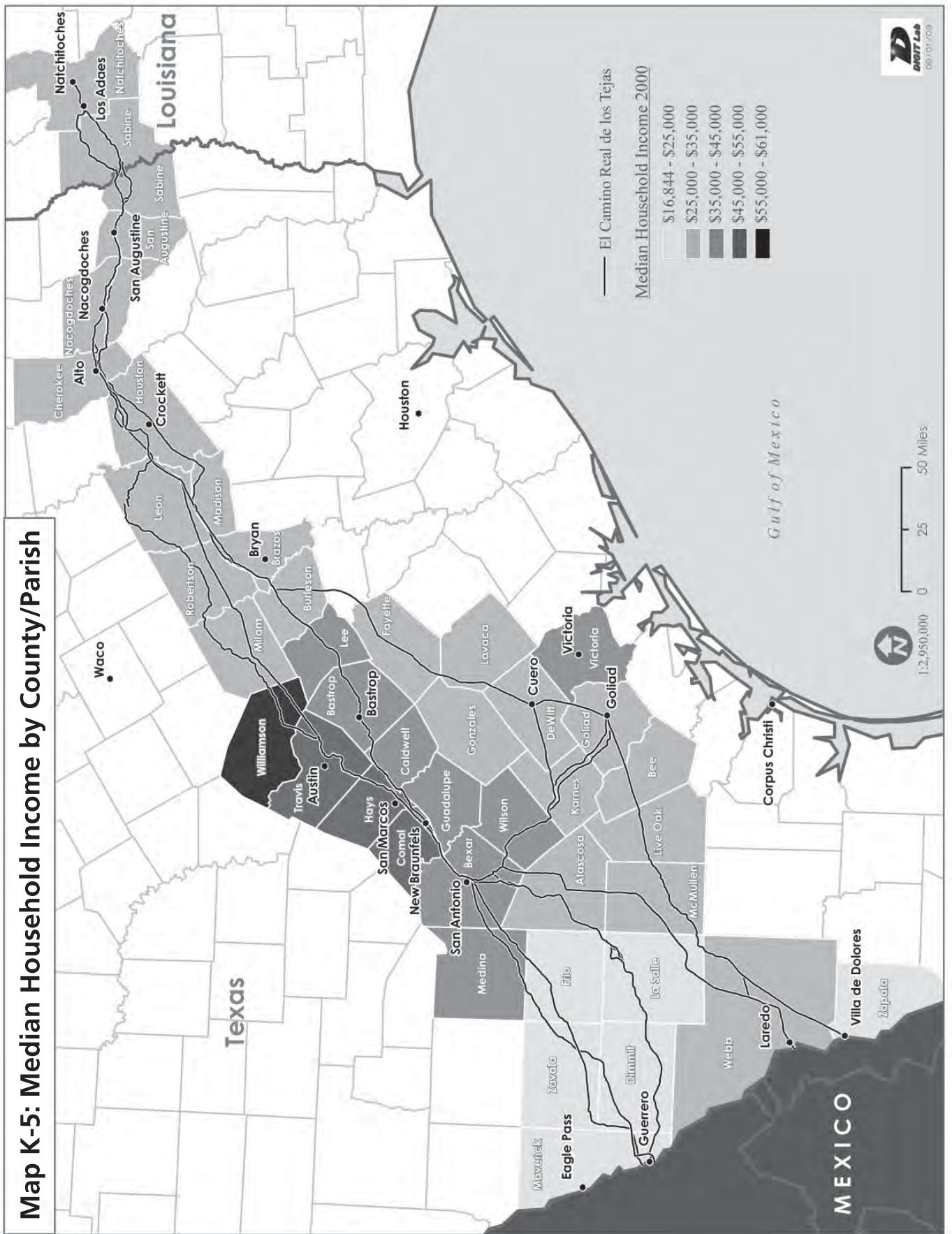
# APPENDIX K. ENVIRONMENTAL ASSESSMENT – MAPS & TABLES



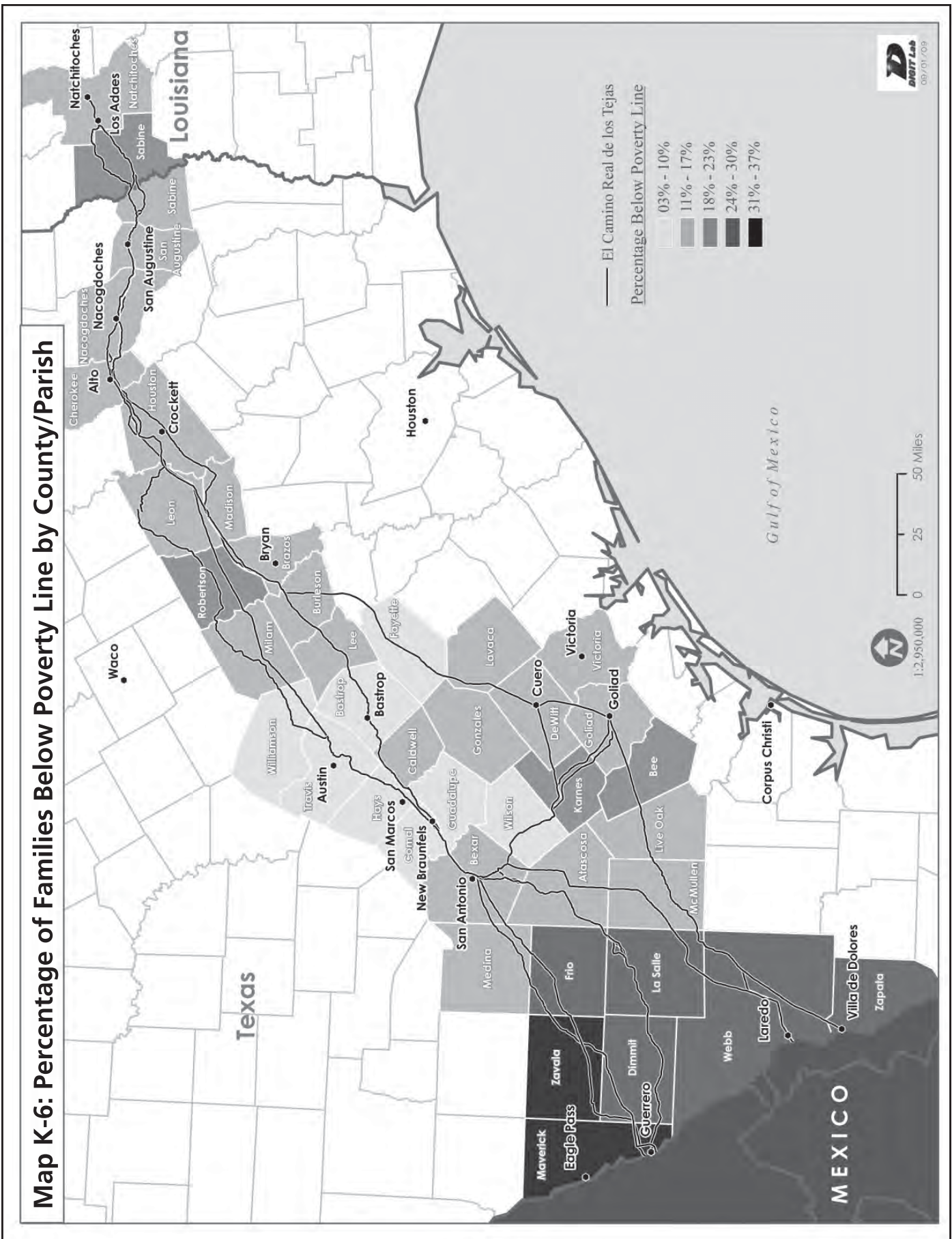


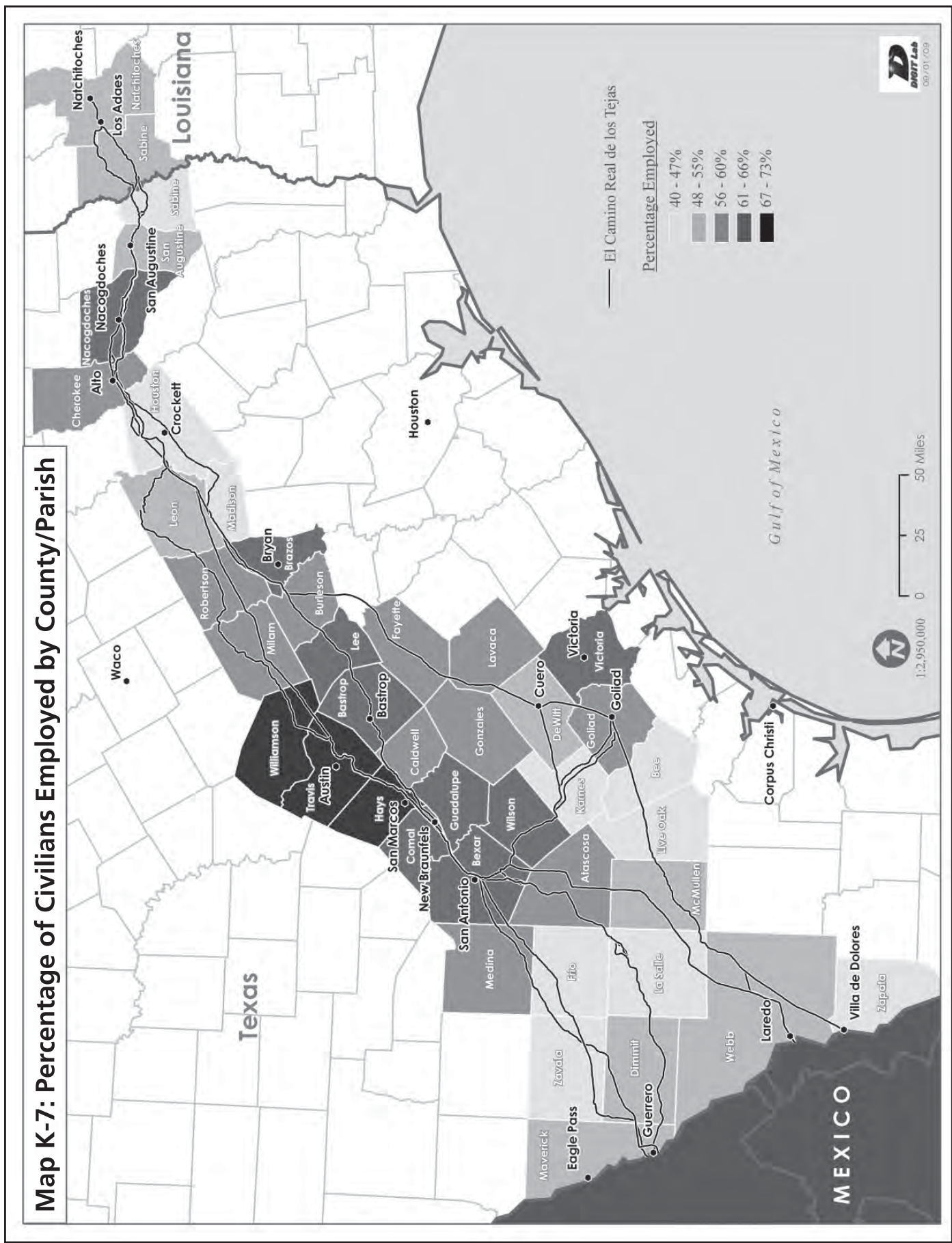


**Map K-5: Median Household Income by County/Parish**

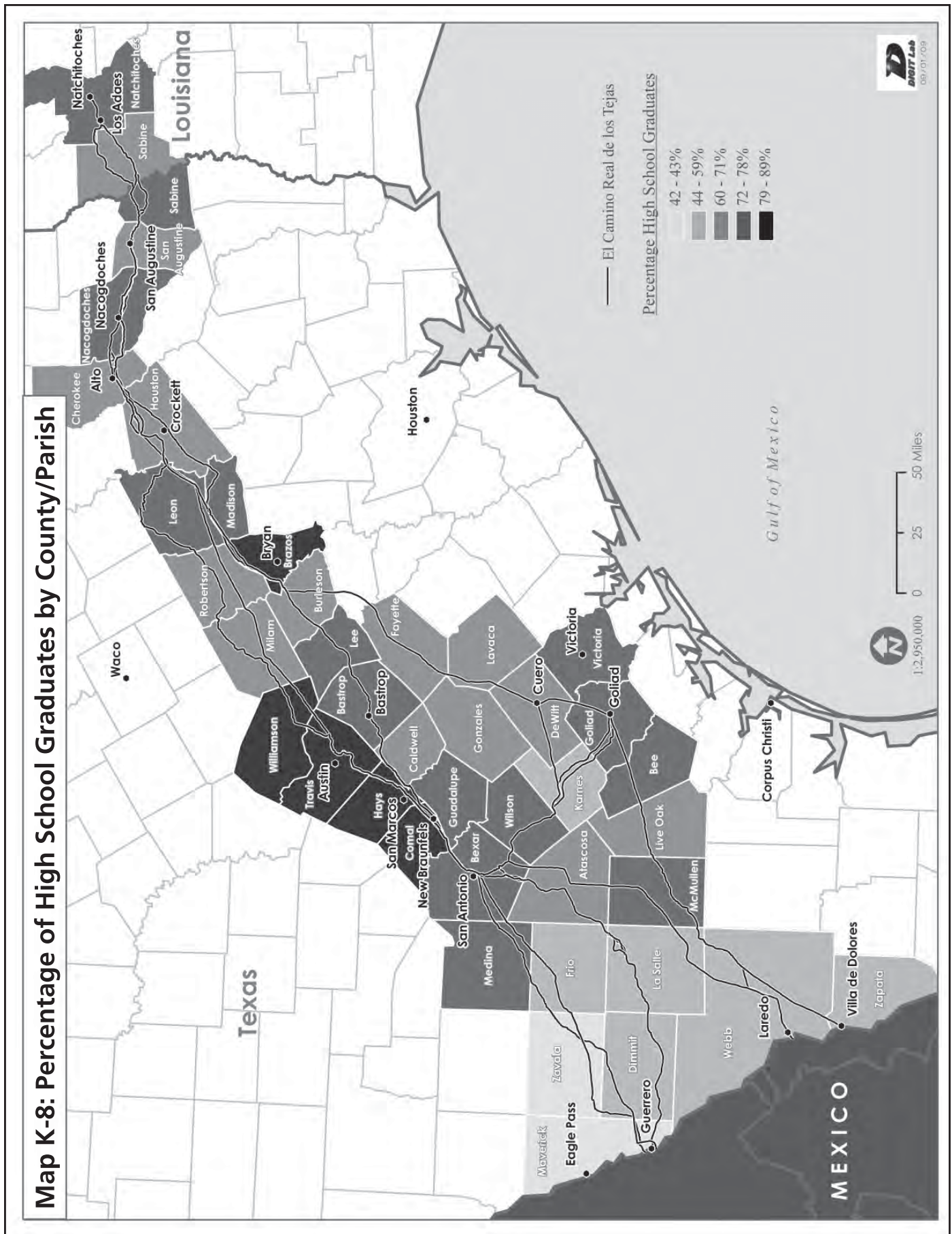




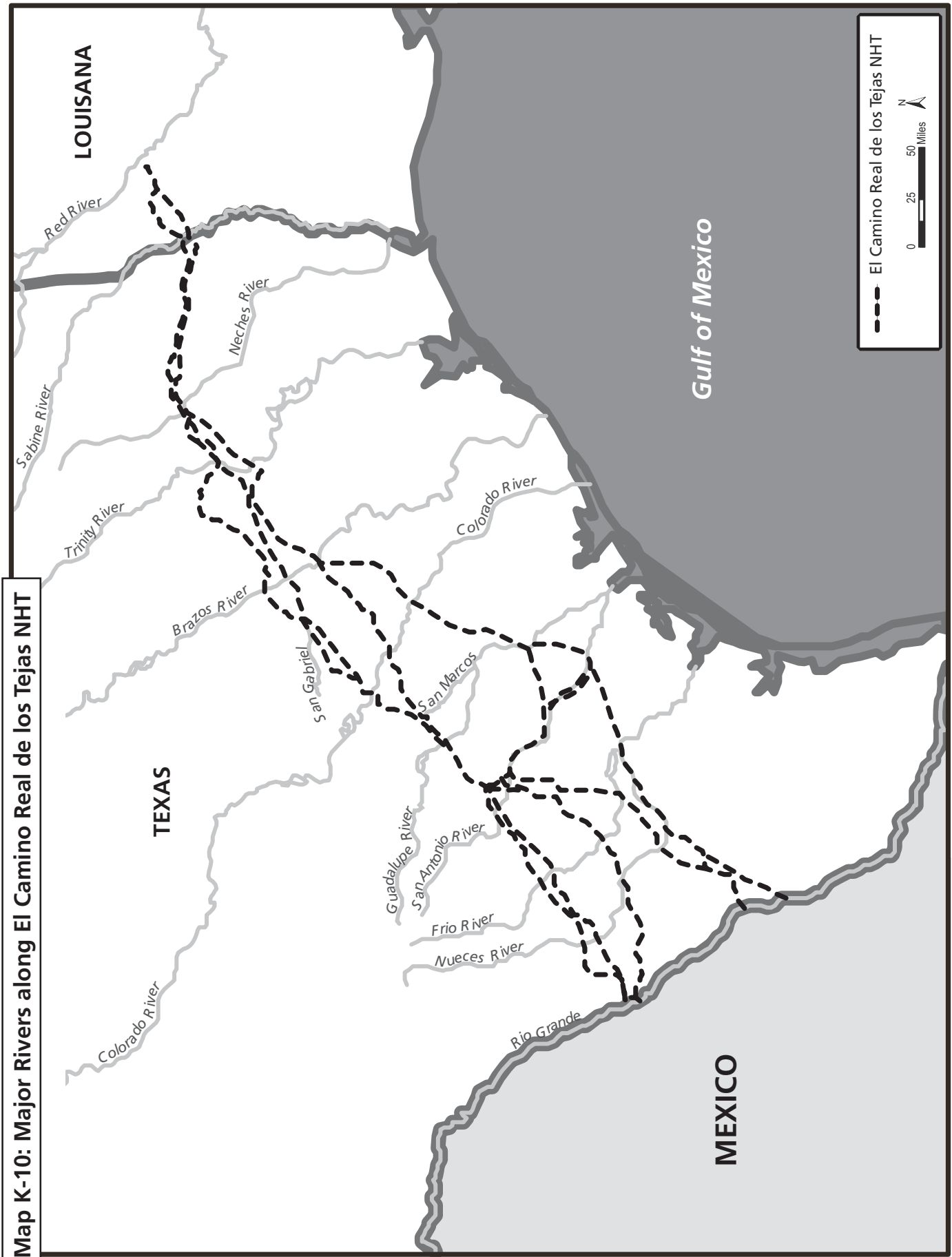














*Table K-1. Median Household Income and Percentage of Families Below the Poverty Line by County/Parish, 2000*

County/State	Median Household Income	% Difference from Statewide Median Income♦	% Families Below Poverty Rate★	Difference from Statewide Percentage
Atascosa	\$33,081	-17.1	-16.1	+4.1
Bastrop	\$43,578	+9.1	+8.4	-3.6
Bee	\$28,392	-28.9	-19.7	+10.5
Bexar	\$38,328	-4.0	-12.7	+7.7
Brazos	\$29,104	-27.0	-14.0	+2.0
Burleson	\$33,026	-17.2	-13.2	+1.2
Caldwell	\$36,573	-8.0	-10.4	-1.6
Cherokee	\$29,313	-26.0	-13.7	+1.7
Comal	\$46,147	+15.6	+6.4	-5.6
DeWitt	\$28,714	-28.0	+15.3	+3.3
Dimmit	\$21,917	-45.1	+29.7	+17.7
Fayette	\$34,526	-13.5	-8.1	-3.9
Frio	\$24,504	-38.6	+24.5	+12.5
Goliad	\$34,201	-14.3	-11.9	-.1
Gonzales	\$28,368	-28.9	+13.8	+1.8
Guadalupe	\$43,949	+10.1	-7.3	-4.7
Hays	\$45,006	+12.7	-6.4	-5.6
Houston	\$28,119	-29.6	+15.6	+3.6
Karnes	\$26,526	-33.6	+18.5	+6.5
La Salle	\$21,857	-45.2	+28.2	+16.2
Lavaca	\$29,132	-27.0	-10.2	-1.8
Lee	\$36,280	-9.1	-9.7	-2.3
Leon	\$30,981	-22.4	+12.6	+6.6
Live Oak	\$32,057	-19.7	+14.1	+2.1
Madison	\$29,418	-26.3	+12.3	+3.3
Maverick	\$21,232	-48.8	+32.0	+20.0
McMullen	\$32,500	-18.6	+15.9	+3.9
Medina	\$36,063	-9.7	12.0	=
Milam	\$33,186	-16.9	+12.2	+2.2
Nacogdoches, TX	\$28,301	-29.1	+15.5	+3.5
Natchitoches, LA	\$25,722	-21.0	15.8	=
Robertson	\$28,886	-27.6	+17.3	+5.3
Sabine, LA	\$26,655	-14.8	+20.9	+5.1
Sabine, TX	\$27,198	-31.9	-11.8	-2.2
San Augustine, TX	\$27,025	-32.3	+15.6	+3.6

♦ In 2000, the median household income for the United States was \$41,994, for Texas was \$39,927, and for Louisiana it was \$32,566. Percentage values for this column were calculated as follows: (County Median Household Income – Texas Median Household Income) Texas Median Household Income.

★ In 2000, the percentage of families below poverty rate for the United States was 9.2%, for Texas it was 12%, and for Louisiana it was 15.8%.

County/State	Median Household Income	% Difference from Statewide Median Income♦	% Families Below Poverty Rate★	Difference from Statewide Percentage
Travis	\$46,761	+17.1	-7.7	-4.3
Victoria	\$38,732	-3.0	-10.5	-1.5
Webb	\$28,100	-29.6	+26.7	+14.7
Williamson	\$60,642	+51.9	-3.4	-8.6
Wilson	\$40,006	+0.2	-9.2	-2.8
Zapata	\$24,635	-38.3	+29.3	+17.3
Zavala	\$16,844	-57.8	+37.4	+27.4

♦ In 2000, the median household income for the United States was \$41,994, for Texas was \$39,927, and for Louisiana it was \$32,566. Percentage values for this column were calculated as follows: (County Median Household Income – Texas Median Household Income) Texas Median Household Income.

★ In 2000, the percentage of families below poverty rate for the United States was 9.2%, for Texas it was 12%, and for Louisiana it was 15.8%.

*Table K-2. Population Data for Counties and Parishes Crossed by the Trail, 1990–2000*

County/State	1990 Population	2000 Population	Population Change 1990–2000	% Change in Population 1990–2000 †
Atascosa, TX	30,533	38,628	+8,095	+26.5
Bastrop, TX	38,263	57,733	+19,470	+50.9
Bee, TX	25,135	32,359	+7,224	+28.7
Bexar, TX	1,185,394	1,392,931	+207,537	+17.5
Brazos, TX	121,862	152,415	+30,553	+25.1
Burleson, TX	13,625	16,470	+2,845	+20.9
Caldwell, TX	26,392	32,194	+5,802	+22.0
Cherokee, TX	41,049	46,659	+5,610	+13.7
Comal, TX	51,832	78,021	+31,799	+75.0
DeWitt, TX	18,840	20,013	+1,173	+6.2
Dimmit, TX	10,433	10,248	-185	-1.8
Fayette, TX	20,095	21,804	+1,709	+8.5
Frio, TX	13,472	16,252	+2,780	+20.6
Goliad, TX	5,980	6,928	+948	+15.8
Gonzales, TX	17,205	18,628	+1,423	+8.2
Guadalupe, TX	64,873	89,023	+24,150	+37.2
Hays, TX	65,614	97,589	+31,975	+48.7
Houston, TX	21,375	23,185	+1,810	+8.5
Karnes, TX	12,455	15,446	+2,991	+24.0
La Salle, TX	5,254	5,866	+612	+11.6
Lavaca, TX	18,690	19,210	+520	+2.8
Lee, TX	12,854	15,657	+2,803	+21.8
Leon, TX	12,665	15,335	+2,670	+21.1
Live Oak, TX	9,556	12,309	+2,753	+28.8
Madison, TX	10,931	12,940	+2,009	+18.4

† Percentage population change has been computed in the following manner – (2000–1990)/1990.



County/State	1990 Population	2000 Population	Population Change 1990–2000	% Change in Population 1990–2000 †
Maverick, TX	36,378	47,297	+10,919	+30.0
McMullen, TX	817	851	+34	+4.2
Medina, TX	27,312	39,304	+11,992	+43.9
Milam, TX	22,946	24,238	+1,292	+5.6
Nacogdoches, TX	54,753	59,203	+4,450	+8.1
Natchitoches, LA	36,689	39,080	+2,391	+6.5
Robertson, TX	15,511	16,000	+489	+3.1
Sabine, LA	22,646	23,459	+813	+3.4
Sabine, TX	9,586	10,469	+883	+9.2
San Augustine, TX	7,999	8,946	+947	+11.9
Travis, TX	576,407	812,280	+235,873	+40.9
Victoria, TX	74,361	84,088	+9,727	+13.1
Webb, TX	133,239	193,117	+59,878	+44.9
Williamson, TX	139,551	249,967	+110,416	+79.1
Wilson, TX	22,650	32,408	+9,758	+43.1
Zapata, TX	9,279	12,182	+2,903	+23.9
Zavala, TX	12,162	11,600	-562	-4.6

† Percentage population change has been computed in the following manner – (2000–1990)/1990.

*Table K-3. Percentage of Civilian Population Employed and Percentage of High School Graduates, 2000*

County	Employed Civilian Pop (over 16)	% Employed♦	% High school grad. or higher★
Atascosa	15,430	59.3	65.2
Bastrop	26,529	63.6	76.9
Bee	9,944	42.0	73.7
Bexar	595,911	63.4	76.9
Brazos	72,096	64.1	81.3
Burleson	7,024	58.3	71.1
Caldwell	13,403	59.0	71.4
Cherokee	18,691	55.5	68.4
Comal	36,319	62.8	83.9
DeWitt	7,893	52.8	67.9
Dimmit	3,342	54.1	54.3
Fayette	10,039	59.5	71.3
Frio	5,257	47.1	57.7
Goliad	2,949	56.8	72.4
Gonzalez	8,315	59.1	62.0

♦ In 2000, the average percentage employed for the United States was 65%, the average for Texas was 65.6%, and the average for Louisiana was 61%.

★ In 2000, the average percentage of high-school graduates for the United States was 84.1%, the average for Texas was 78.6%, and the average for Louisiana was 79.4%.

County	Employed Civilian Pop (over 16)	% Employed♦	% High school grad. or higher★
Guadalupe	40,845	66.4	78.1
Hays	50,484	70.2	84.7
Houston	7,958	45.9	70.0
Karnes	4,705	40.2	59.1
La Salle	1,826	45.7	50.1
Lavaca	8,677	58.5	68.6
Lee	7,309	63.3	71.7
Leon	6,012	52.2	73.8
Live Oak	4,244	45.3	67.1
Madison	4,186	42.4	72.8
Maverick	13,161	50.7	42.1
McMullen	347	51.8	74.7
Medina	16,168	58.6	72.2
Milam	10,305	58.5	70.9
Nacogdoches	25,637	61.7	73.7
Natchitoches, LA	14,909	54.8	72.7
Robertson	6,318	56.4	68.1
Sabine, LA	8,466	51.2	70.8
Sabine, TX	3,258	41.9	72.5
San Augustine	3,210	48.8	69.9
Travis	441,161	72.0	84.7
Victoria	38,646	64.8	76.2
Webb	62,558	53.0	53.0
Williamson	129,192	72.8	88.8
Wilson	13,939	61.2	73.8
Zapata	3,384	43.9	53.1
Zavala	3,034	44.9	43.4

♦ In 2000, the average percentage employed for the United States was 65%, the average for Texas was 65.6%, and the average for Louisiana was 61%.

★ In 2000, the average percentage of high-school graduates for the United States was 84.1%, the average for Texas was 78.6%, and the average for Louisiana was 79.4%.

*Table K-4.  
Percentage of Ethnic Groups in Counties and Parishes Crossed by the Trail, 2000*

County/State	Whites	% White	Black	% Black	Hispano	% Hispano	Other	% Other
Atascosa	28,286	73.3	230	0.6	22,620	58.6	9,001	22.7
Bastrop	46,327	80.2	5,072	8.8	13,845	24	5,090	8.9
Bee	21,957	67.9	3,203	9.9	17,450	53.9	6,510	20.1
Bexar	959,122	68.9	100,025	7.2	757,033	54.3	283,061	20.3
Brazos	113,479	74.5	16,333	10.7	27,253	17.9	19,597	12.9
Burleson	12,199	74.1	2,481	15.1	2,411	14.6	1,474	9.0
Caldwell	22,577	70.1	2,735	8.5	13,018	40.4	6,000	18.6



County/State	Whites	% White	Black	% Black	Hispano	% Hispano	Other	% Other
Cherokee	34,685	74.3	7,446	16	6,178	13.2	3,902	8.4
Comal	69,501	89.1	741	0.9	17,609	22.6	6,246	8.0
DeWitt	15,293	76.4	2,209	11	5,454	27.2	2,160	10.7
Dimmit	7,886	77	90	0.9	8,708	85	2,015	19.7
Fayette	18,442	84.6	1,528	7	2,786	12.8	1,592	7.4
Frio	11,679	71.9	792	4.9	11,987	73.8	3,375	20.8
Goliad	5,724	82.6	334	4.8	2,439	35.2	750	10.7
Gonzales	13,458	72.2	1,563	8.4	7,381	39.6	3,069	16.5
Guadalupe	69,122	77.6	4,460	5	29,561	33.2	12,705	14.3
Hays	77,014	78.9	3,588	3.7	28,859	29.6	14,557	15
Houston	15,899	68.6	6,476	27.9	1,739	7.5	633	2.8
Karnes	10,588	68.5	1,667	10.8	7,324	47.4	2,842	18.4
La Salle	4,779	81.5	208	3.5	4,524	77.1	754	12.8
Lavaca	16,686	86.9	1,305	6.8	2,183	11.4	1,000	5.2
Lee	11,992	76.6	1,892	12.1	2,848	18.2	1,503	9.6
Leon	12,809	83.5	1,593	10.4	1,213	7.9	770	5.0
Live Oak	10,743	87.3	301	2.4	4,683	38	1,026	8.3
Madison	8,642	66.8	2,959	22.9	2,042	15.8	1,339	10.3
Maverick	33,529	70.9	146	0.3	44,938	95	12,228	25.8
McMullen	752	88.4	10	1.2	282	33.1	78	9.1
Medina	31,200	79.4	866	2.2	17,873	45.5	6,108	15.5
Milam	19,121	78.9	2,678	11	4,516	18.6	2,044	8.4
Nacogdoches	44,405	75	9,908	16.7	6,660	11.2	4,056	6.9
Natchitoches, LA	22,608	57.9	15,017	38.4	566	1.4	957	2.4
Robertson	10,592	66.2	3,871	24.2	2,359	14.7	1,250	7.9
Sabine, LA	17,048	72.7	3,958	16.9	642	2.7	1,942	8.2
Sabine, TX	9,197	87.8	1,039	9.9	189	1.8	141	1.3
San Augustine	6,196	69.3	2,500	27.9	320	3.6	183	2.7
Travis	554,058	68.2	75,247	9.3	229,048	28.2	41,529	19.8
Victoria	62,406	74.2	5,297	6.3	32,959	39.2	14,519	17.2
Webb	158,670	97.5	713	0.4	182,070	94.3	28,823	15.3
Williamson	205,994	82.4	12,790	5.1	42,990	17.2	25,899	8.4
Wilson	26,311	81.2	392	1.2	11,834	36.5	4,917	17.5
Zapata	10,241	84.1	50	0.4	10,328	84.8	1,607	13.1
Zavala	7,547	65.1	57	0.5	10,582	91.2	3,688	31.8

*Table K-5: Public Land Ownership in Texas and Louisiana*

State	Federal	%	State	%	USFS	NPS	NWR	Army Corps
LA	1,387,100 acres	4.97	744,600	2.67	604,210	10,100	463,180	20,140
TX	2,391,400 acres	1.43	825,000	.49	755,100	1,172,600	463,700	945,870

*Table K-6. Recreational Visits to Public Sites along El Camino Real de los Tejas National Historic Trail, 2007–2008*

Feature Name	Feature Type	Management Entity	Location (or nearest)	Latest Visitation Figures (2007)
Bastrop State Park	Park	Texas Parks & Wildlife	Bastrop, Texas	158,036 (FY 2008)
Caddo Mounds State Historic Site	Archeological site	Texas Historical Commission	Alto, Texas	5,660 (FY 2008)
Fort Boggy State Park	Park	Texas Parks & Wildlife	Centerville, Texas	9,055 (FY 2008)
Goliad State Historical Park	Historic mission-presidio complex and park	Texas Parks & Wildlife	Goliad, Texas	50,999 (FY 2008)
McKinney Falls State Park	Park	Texas Parks & Wildlife	Austin, Texas	128,454 (FY 2008)
Mission Nuestra Señora de los Dolores de los Ais	Historic mission site and interpretive center	City of San Augustine	San Augustine, Texas	500 (FY 2008)
Mission Tejas State Park	Historic mission and park	Texas Parks & Wildlife	Alto, Texas	15,478 (FY 2008)
Old Stone Fort/ Stone Fort Museum	Reconstructed historical building	Stephen F. Austin State University	Nacogdoches, Texas	6,116 (Scholastic Year 2007–2008)
The Alamo	Historic mission-fortress compound	Daughters of the Republic of Texas	San Antonio, Texas	2.5 million visitors a year consistently over the last decade
San Antonio Missions National Historical Park	Federal historic park	National Park Service	San Antonio, Texas	1,303,212 (Year 2008)
Toledo Bend Reservoir	Reservoir	Sabine River Authority – State of Louisiana (Texas does not have a visitor center on their side of the river.)	Texas-Louisiana border	16,488 (Year 2007) average for the last decade: 16,899
Fort Jesup State Historic Site	Historic site and park	Louisiana Department of Culture, Recreation & Tourism	Many, Louisiana	5,059 (FY 2007-2008)
Los Adaes State Historic Site	Historic site and park	Louisiana Department of Culture, Recreation & Tourism	Natchitoches, Louisiana	2,700 (FY 2007-2008)
Fort St. Jean Baptiste State Historic Site	Historic site and park	Louisiana Department of Culture, Recreation & Tourism	Natchitoches, Louisiana	12,344 (FY 2007-2008)
Cane River Creole National Historical Park	Federal historic park	National Park Service	Natchitoches, Louisiana	24,587 (Year 2008)





