

# Environmental Impact Statement

Appalachian National Scenic Trail  
Delaware Water Gap National Recreation Area  
Middle Delaware National Scenic and Recreational River

National Park Service  
U.S. Department of the Interior

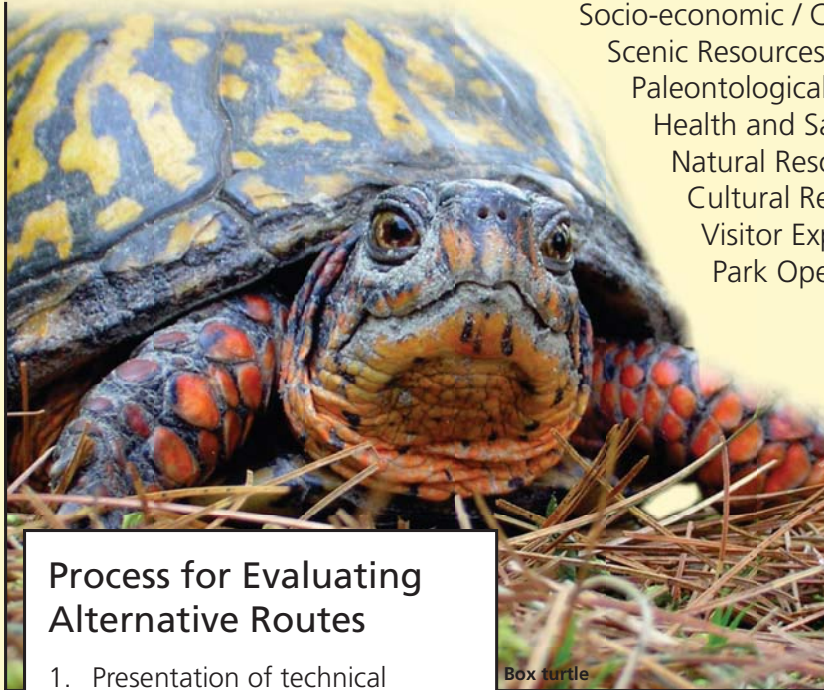


U.S. Army Corps of Engineers  
Philadelphia District



## Development of Alternatives

### Issues and Impacts Involved in the Alternative Evaluation Process



Box turtle

Socio-economic / Community Impacts  
Scenic Resources and Viewsheds  
Paleontological and Geological Resources  
Health and Safety of Visitors and Staff  
Natural Resources  
Cultural Resources  
Visitor Experience  
Park Operations

#### Criteria for Alternatives Evaluation Process

Technical feasibility  
Environmental impacts  
Cost

#### Process for Evaluating Alternative Routes

1. Presentation of technical aspects of the alternative by David Evans & Associates, Inc. (DEA), with a description of why the alternative was recommended for evaluation and potential benefits and drawbacks of the alternative.
2. Question and answer session amongst interdisciplinary team.
3. Discussion of potential environmental concerns, especially potentially major impacts.
4. Evaluation of suitability of the alternative based on criteria with recommendation to evaluate or dismiss.
5. After review of all potential alternative routes by the interdisciplinary team, a review was conducted to assess if refinement was needed.



Van Campens Inn



Cat tail

### Alternatives Considered But Dismissed

#### Require New Tower Structures

ACCC® conductor (aluminum conductor composite core)  
Refurbish the existing 230 kV line to meet energy needs

#### High Cost

Underground 500kV transmission line  
Superconductor lines (direct current)

#### Do Not Meet Technical Reliability Requirements

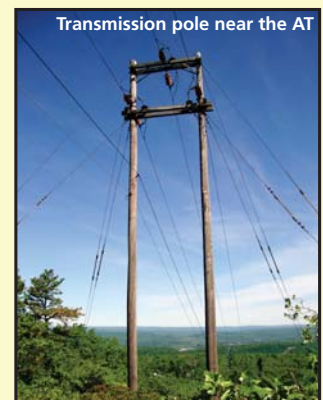
Smart grid  
Distributed energy generation sites  
Localized renewable energy sources

#### Unacceptable Adverse Impacts

Alternative 8  
Alternative 9  
Alternative 10

#### Redundant Alternatives

Alternative 11  
Alternative 12



Transmission pole near the AT