

United States Department of the Interior  
National Park Service  
NATIONAL REGISTER OF HISTORIC PLACES  
CONTINUATION SHEET

Section 7 Page 54

East and West Potomac Parks Historic District  
Washington, DC

---

National Park Service personnel as "Benjis."<sup>94</sup> These features are not considered specific contributing elements due to their temporary nature and recent construction.<sup>95</sup>

Finally, "The Awakening," a cast-aluminum sculpture by J. Seward Johnson, Jr., which was created for the 1980 International Sculpture Conference Exhibition, was installed near the tip of Hains Point the same year. The five-part sculpture, composed of a giant head, knee, foot, hand, and arm, depicts a man emerging from the ground. "The Awakening" has not been evaluated as to its contributing or noncontributing status at this time, since it is not owned by the federal government, but is on long-term loan at the site.

#### **CONTRIBUTING VIEWS IN EAST POTOMAC PARK**

The amount and quality of open space is the most significant character-defining element of East Potomac Park, as it is what allows the unimpeded views to and from distant monuments, the Potomac River and adjacent waterfront, and the low skyline of the city. The strongly prevalent axial views and open, spatially continuous set of views are the essence of the McMillan Plan for the parks. A strong sense of orientation is provided by certain axial relationships and views, as delineated below. Also, though not specifically described below, other views that preserve this sense of open space should not be precluded from consideration as contributing elements. For the purposes of this nomination, the term "view" describes those unplanned views that resulted from the construction of other park features. These primary views are not included in the resource count, since they are not recognized by the National Register as an individual Property and Resource Type.

#### **Views from the Walk Around Hains Point into Washington, DC, and Virginia.**

The walk around Hains Point was constructed from 1919-31, and was planned for recreational use. This walk affords uninterrupted views from the periphery of East Potomac Park and Hains Point, towards such local landmarks as the National Defense University at Ft. McNair and St. Elizabeth's Hospital, as well as across the Potomac River to the city and waterfront, memorials, parkways, and Ronald Reagan Washington National Airport.

---

<sup>94</sup>The term "Benjis," an informal term used by National Park Service personnel, was derived from the name of the Chief of the Denver-based design office when the structures were designed in the 1970s, Benjamin Biederman.

<sup>95</sup>Although there are recreational facilities in both parks, for the purposes of this nomination, they have been considered a single noncontributing site, and have been counted only once.

United States Department of the Interior  
National Park Service

NATIONAL REGISTER OF HISTORIC PLACES  
CONTINUATION SHEET

Section Historic Photographs Page 127

East and West Potomac Parks Historic District  
Washington, DC

---

LOCATION: West Potomac Park

DATE: 1941

VIEW OF: Jefferson Memorial under construction

SOURCE OF PHOTO: *The Man Who Built Washington: A Life of John McShain*

PHOTO 12 of 31

LOCATION: West Potomac Park

DATE: Circa 1920s

VIEW OF: Ohio Drive, SW, near Lincoln Memorial, facing northwest

SOURCE OF PHOTO: Commission of Fine Arts Photograph File

PHOTO 13 of 31

LOCATION: West Potomac Park

DATE: Early 1980s

VIEW OF: Aerial view of Constitution Gardens and the Lincoln Memorial, facing west

SOURCE OF PHOTO: Commission of Fine Arts Photograph File

PHOTO 14 of 31

LOCATION: West Potomac Park

DATE: Early 1990s

VIEW OF: Bird's-eye view of Franklin Delano Roosevelt Memorial, facing southeast

SOURCE OF PHOTO: *Progressive Architecture*, September 1995

PHOTO 15 of 31

LOCATION: East Potomac Park

DATE: Late 1910s

VIEW OF: Aerial view of East Potomac Park, facing south from the Washington Monument

SOURCE OF PHOTO: Commission of Fine Arts Photograph File

PHOTO 16 of 31

LOCATION: East Potomac Park

DATE: Early 1920s

VIEW OF: Aerial view of East Potomac Park, facing south from the Washington Monument

SOURCE OF PHOTO: Commission of Fine Arts Photograph File

PHOTO 17 of 31

United States Department of the Interior  
National Park Service

NATIONAL REGISTER OF HISTORIC PLACES  
CONTINUATION SHEET

Section Historic Photographs Page 128

East and West Potomac Parks Historic District  
Washington, DC

---

LOCATION: East Potomac Park

DATE: Mid-1920s

VIEW OF: Aerial view of East Potomac Park, facing southwest

SOURCE OF PHOTO: Commission of Fine Arts Photograph File

PHOTO 18 of 31

LOCATION: East Potomac Park

DATE: Late 1920s

VIEW OF: Aerial view of East Potomac Park, facing south

SOURCE OF PHOTO: Commission of Fine Arts Photograph File

PHOTO 19 of 31

LOCATION: East Potomac Park

DATE: 1922

VIEW OF: Aerial view of East Potomac Park, facing northeast

SOURCE OF PHOTO: NPS Reservation File 333 - East Potomac Park

PHOTO 20 of 31

LOCATION: East Potomac Park

DATE: Circa 1920s

VIEW OF: Aerial view of East Potomac Park, facing east

SOURCE OF PHOTO: Commission of Fine Arts Photograph File

PHOTO 21 of 31

LOCATION: East Potomac Park

DATE: Early 1910s

VIEW OF: Ohio Drive, SW, and U.S. Army Corps of Engineers' Wharf, facing southeast

SOURCE OF PHOTO: Commission of Fine Arts Photograph File

PHOTO 22 of 31

LOCATION: East Potomac Park

DATE: Mid-1910s

VIEW OF: Ohio Drive, SW, under construction, Hains Point, facing north

SOURCE OF PHOTO: Commission of Fine Arts Photograph File

PHOTO 23 of 31

United States Department of the Interior  
National Park Service

NATIONAL REGISTER OF HISTORIC PLACES  
CONTINUATION SHEET

Section Historic Photographs Page 129

East and West Potomac Parks Historic District  
Washington, DC

---

LOCATION: East Potomac Park

DATE: Circa 1920s

VIEW OF: Landscape of East Potomac Park, facing northeast

SOURCE OF PHOTO: Commission of Fine Arts Photograph File  
PHOTO 24 of 31

LOCATION: East Potomac Park

DATE: Early 1920s

VIEW OF: Tourist Camp, facing northeast

SOURCE OF PHOTO: Commission of Fine Arts Photograph File  
PHOTO 25 of 31

LOCATION: East Potomac Park

DATE: 1927

VIEW OF: Tourist Camp showing Field House and new bungalows

SOURCE OF PHOTO: NPS Reservation File 333 - East Potomac Park  
PHOTO 26 of 31

LOCATION: East Potomac Park

DATE: 1931

VIEW OF: Tourist Camp, facing north

SOURCE OF PHOTO: "Washington Through the Years," *National Geographic*  
PHOTO 27 of 31

LOCATION: East Potomac Park

DATE: Circa 1930s

VIEW OF: Teahouse, facing northwest

SOURCE OF PHOTO: Commission of Fine Arts Photograph File  
PHOTO 28 of 31

LOCATION: East Potomac Park

DATE: 1940

VIEW OF: U.S. Engineers' Storehouse, facing northeast

SOURCE OF PHOTO: Commission of Fine Arts Photograph File  
PHOTO 29 of 31



Historic Photograph 17 of 31

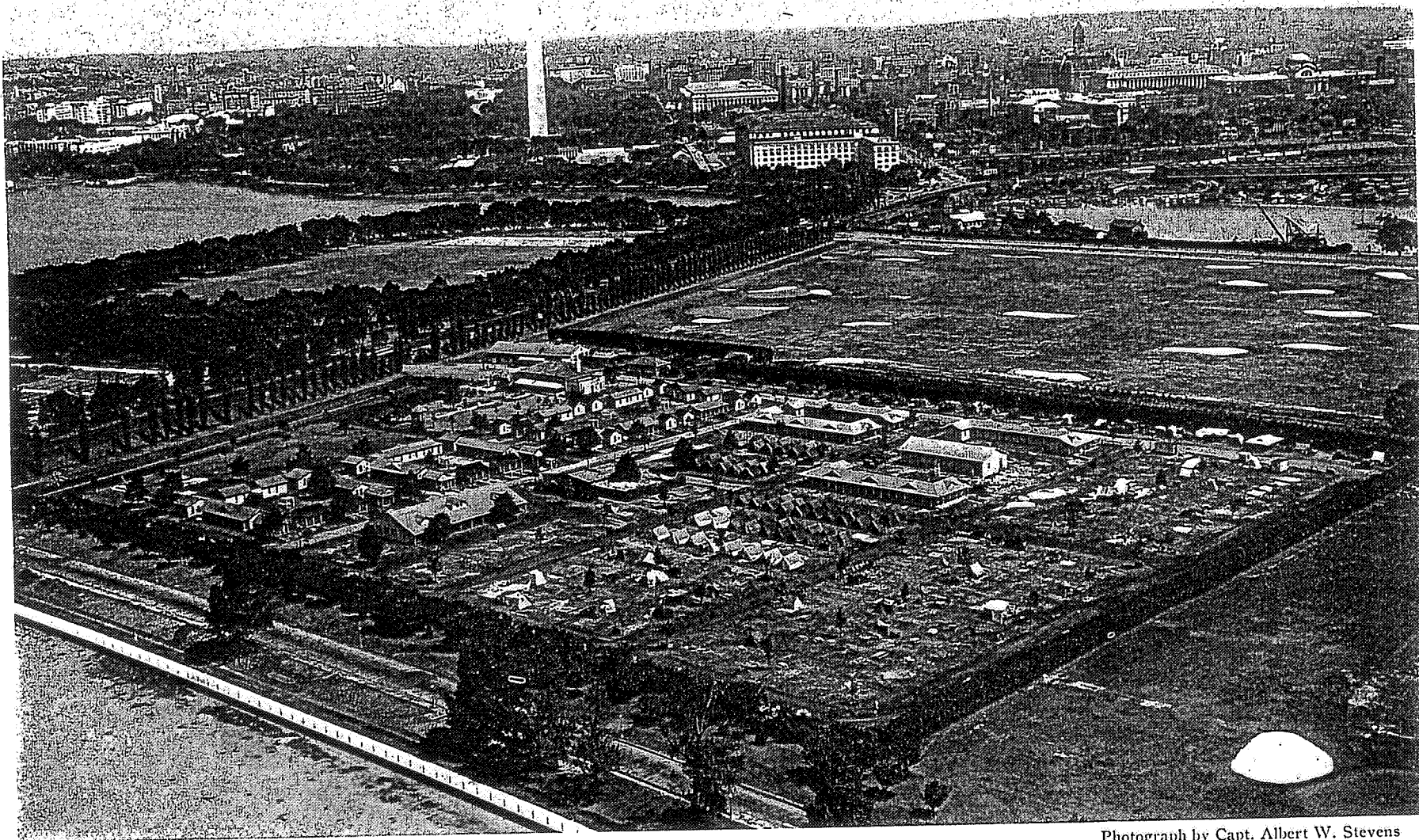




Historic Photograph 19 of 31



Historic Photograph 22 of 31

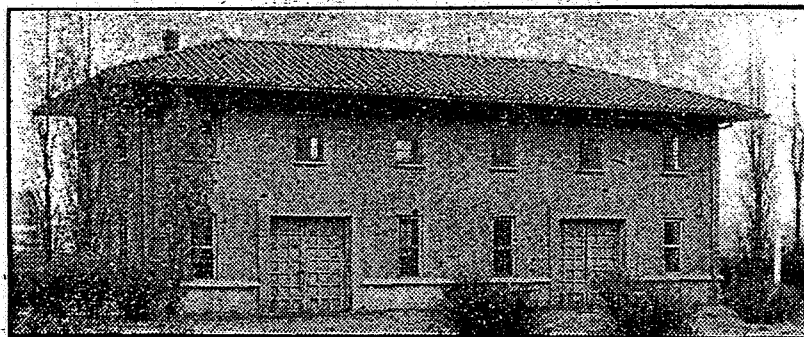
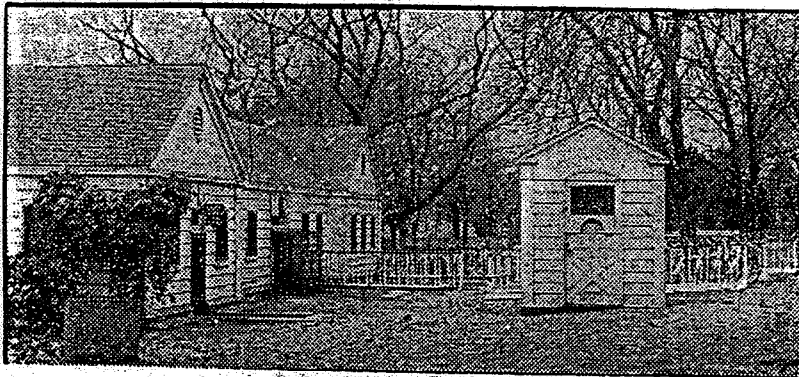


Photograph by Capt. Albert W. Stevens

#### WASHINGTON'S TOURIST CAMP FOR THOSE WHO TAKE THE OPEN ROAD

Since 1921 thousands of travelers have made good use of the model tourist camp in East Potomac Park. Here are permanent tents for rent, with hot and cold water, shower baths, a gasoline filling station, a laundry, and a commissariat where provisions may be obtained at cost. Equipped with playgrounds for children, well-laid-out streets, sanitary sewerage, the camp is a city in miniature. It is screened by trees from Potomac Park Driveway, which surrounds it.





Top, the present bicycle "base" at the Tidal Basin. Below, its future home near the Railroad Bridge.