

National Park Service
U.S. Department of the Interior
Cape Hatteras National Seashore



Transportation Study for Bodie Island

Public Meeting
August 4, 2010

EXPERIENCE YOUR AMERICA

Agenda

- Welcome and Purpose of Public Meeting
- Study Purpose, Area and Background
- Study Process and Results
 - Conditions Inventory/Assessment
 - Needs Assessment
 - Potential Strategies
- Examples of Alternative Transportation in Other Parks
- Opportunity for Public Review and Input
- Questions
- Comments and Discussion

Study Purpose

- Identify optimal transportation strategies for serving visitors to sites within the Bodie Island District of the Cape Hatteras National Seashore
- Lay the groundwork for future alternative transportation studies and projects for the rest of the Seashore and the greater Outer Banks region

Study Area

Bodie Island District of Cape Hatteras National Seashore

Study Area

Cape Hatteras National Seashore

National Park Service
U.S. Department of the Interior
Prepared by the U.S. Department of Transportation
Volpe National Transportation Systems Center



Legend

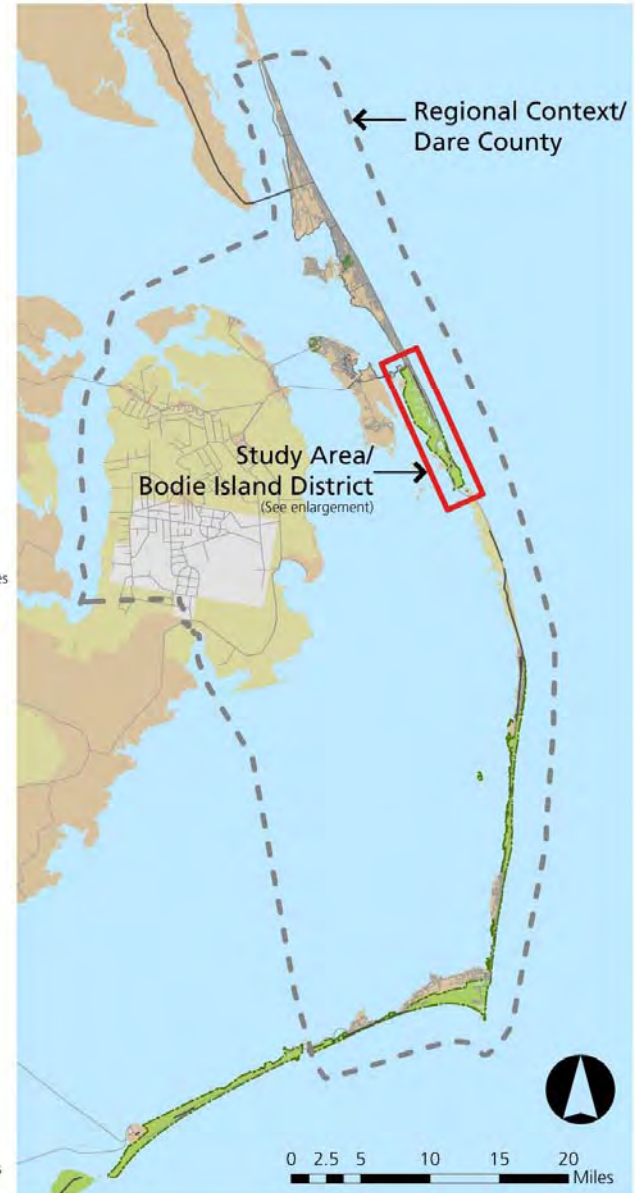
- Dare County Boundary
- Air Force
- Fish and Wildlife Refuge
- National Seashore
- National Park Areas

State Map



0 50 100 200 Miles

Bodie Island District



Study Area (continued)



Whalebone Junction Information Station, Cape Hatteras National Seashore

EXPERIENCE YOUR AMERICA

Study Area (continued)



Bodie Island District, Cape Hatteras National Seashore

EXPERIENCE YOUR AMERICA

Study Area (continued)



Marina and Oregon Inlet Campground, Cape Hatteras National Seashore

Study Background

- Federal Transit Administration's Paul S. Sarbanes Transit in the Parks Program
 - Goals
 - Alternative Transportation Systems
 - Planning and implementation
- Results
 - Support management decisions (e.g., technology selection)
 - Assess financial feasibility
 - Develop or improve partnerships
 - Guidance on whether or not to purchase, lease, or contract new or enhanced services and/or facilities

Study Process

January 12, 2010 to September 30, 2010

- Conditions Inventory/Assessment (**Draft Complete**)
 - Evaluation of the existing transportation network and existing and future project forecasted travel conditions
- Needs Assessment (**Draft Complete**)
 - Assessment of unmet transportation needs (existing and projected)
- Alternative Transportation Analysis (**In progress**)
 - Identification of alternative sustainable integrated transportation strategies to address needs, and
 - Consideration of multimodal and intermodal strategies that promote interconnectivity; this may include new systems or expansion or enhancement of existing systems.

Planning-level recommendations and estimates will be provided to inform future decision-making.

Conditions Inventory / Assessment

- Previous studies
- Regional context
- Transportation characteristics
- Ongoing and proposed projects

Major Designated Bicycle Routes in the Outer Banks

Cape Hatteras National Seashore
National Park Service
U.S. Department of the Interior
Prepared by the U.S. Department of Transportation
Volpe National Transportation Systems Center

Legend

- Unincorporated town or attraction
- Municipal Boundary
- Wright Brothers Bikeway
- - - Mountains-to-Sea-Trail/
NC Bike Route 2
- North-South Atlantic Coast
Bikeway

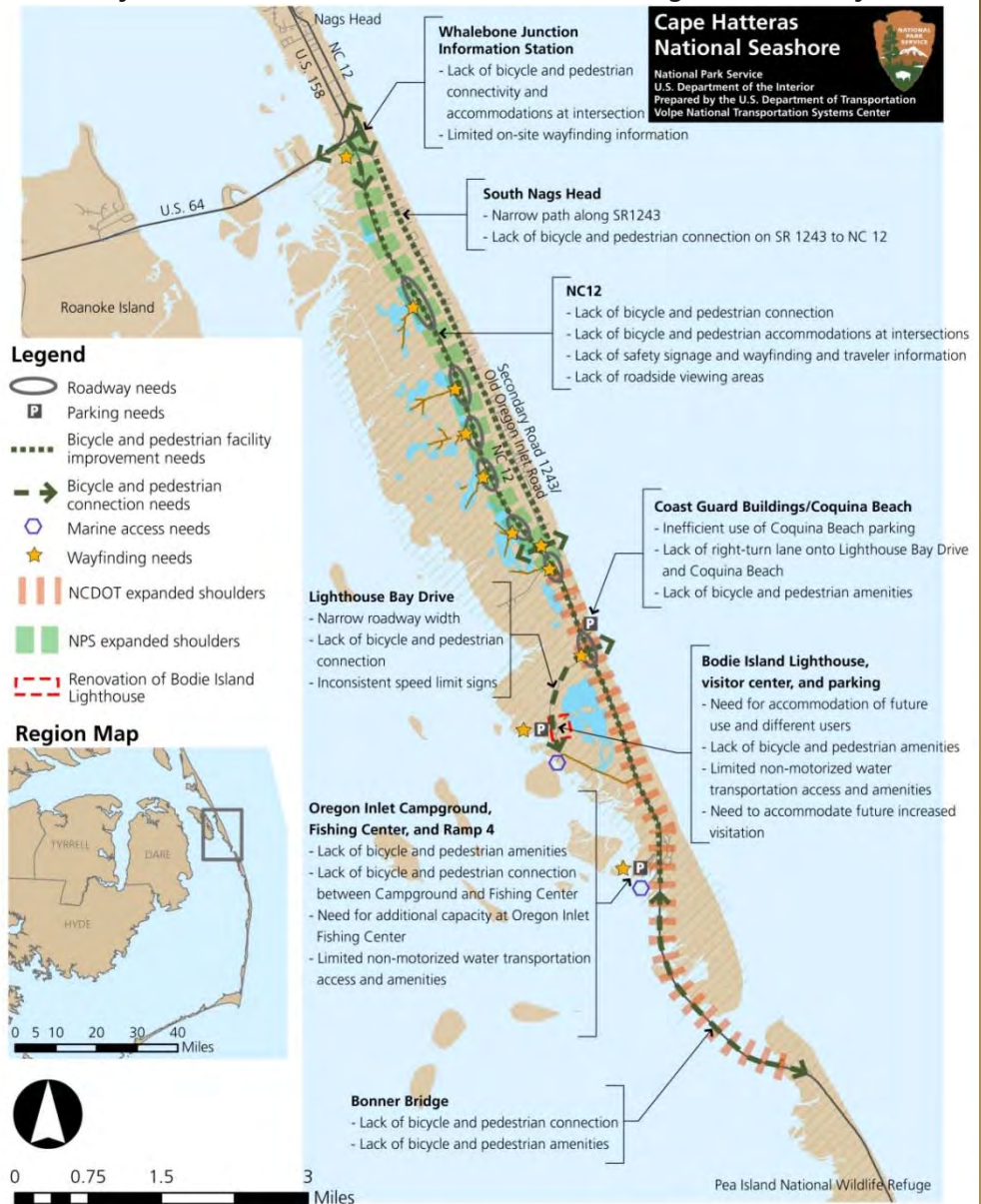


Needs Assessment

Planning, policy,
and infrastructure:

- Roadway
- Parking
- Transit
- Bicycle and Pedestrian
- Marine
- Wayfinding / Traveler Information
- Intermodal Connections

Summary of Infrastructure Needs Assessment Findings for the Study Area



Draft Potential Strategies - Examples

- Policy and planning strategies
 - Collect and track safety data and data on pedestrian and bicycle activity
 - Conduct a marketing campaign to promote alternative transportation on the Outer Banks
- Infrastructure strategies
 - Roadway
 - Widen Lighthouse Bay Drive
 - Construct right-turn lanes on NC 12 for Bodie Island Lighthouse and Coquina Beach
 - Parking
 - Add entrance/exit to Coquina Beach parking in north
 - Reconfigure, expand, and/or relocate Bodie Island Lighthouse parking

Draft Potential Strategies - Examples (cont'd)

- Infrastructure strategies (continued)
 - Bicycle
 - Add facilities to connect Nags Head multi-use trail with NC 12 at Whalebone Junction and southern terminus
 - Provide bicycle racks at all Bodie Island District sites
 - Pedestrian
 - Request installation of crosswalks and pedestrian crossing warning signs at Oregon Inlet and Coquina Beach
 - Marine
 - Improve nonmotorized access facilities at Bodie Island Lighthouse and Oregon Inlet
 - Promote/encourage water taxi/ferry services to/from Bodie Island

Draft Potential Strategies – Examples (cont'd)

- Infrastructure strategies (continued)
 - Transit
 - Pursue partnership to provide shuttle service within Bodie Island or externally
 - Wayfinding and traveler information
 - Provide static and/or real-time information on traffic and other conditions online and/or by phone, radio, or variable message sign

Example Alternative Transportation Systems

Acadia National Park
Island Explorer



Cape Cod National
Seashore Coast
Guard Beach Shuttle

EXPERIENCE YOUR AMERICA

Example Alternative

Transportation System: Acadia National Park

- Island Explorer Shuttle (1999)
 - Response to concerns about traffic congestion, air and noise pollution, and parking scarcity
 - Made possible by partnership with existing local transit agency and multiple funding sources
 - Federal CMAQ funds
 - Friends of Acadia
 - Park fees
 - ATP funding
 - Federal Lands Highway Program
 - Local towns
 - Business direct service
 - Corporations/Businesses
 - Individual donations
 - Fare free service, propane fueled buses, seasonal service with high frequency
- Extensive bicycle trail network and use of intelligent transportation systems (ITS)

Example Alternative Transportation System: Cape Cod National Seashore

- Coast Guard Beach Shuttle (~1980s)
 - Response to 1978 storm that destroyed beach parking
 - Small-scale NPS operated open-air tram suited to beach gear accommodation
- Cape Cod Regional Transit Authority Flex Bus Service and Provincetown-Truro Shuttle
 - Partnership with existing local transit agency to provide seasonal and year-round services to visitors, residents, and seasonal employees
 - Limited beach connections but potential for improved connections
- Extensive bicycle and pedestrian trail network, transit connections to ferries, and use of intelligent transportation systems (ITS)

Opportunity for Public Review and Input

- Planning, Environment and Public Comment (PEPC) website:
<http://parkplanning.nps.gov/projectHome.cfm?parkId=358&projectId=30061>
- Public Comment period July 21 through August 19 2010 – comments can be submitted via PEPC or via mail (see contact information provided below)
- Materials available:
 - Presentation from January 2010
 - Draft Conditions Inventory/Assessment Report
 - Draft Needs Assessment Report
 - Draft list of potential strategies
- Next steps

Contact Information for Comments and Questions:

- <http://parkplanning.nps.gov/caha>
- Mike Murray, Superintendent, Cape Hatteras National Seashore,
1401 National Park Drive, Manteo, NC 27954
- Darrell Echols, Deputy Superintendent, (252) 473-2111, extension
148



Questions?

EXPERIENCE YOUR AMERICA

Comments and Discussion

- Please let us know what you think!
 - Comment cards
 - Interactive, hands-on discussion:
 - Large maps
 - Sticky notes/markers
 - Other needs not yet identified
 - Other potential strategies not yet identified

Cape Hatteras National Seashore



National Park Service
U.S. Department of the Interior

EXPERIENCE YOUR AMERICA