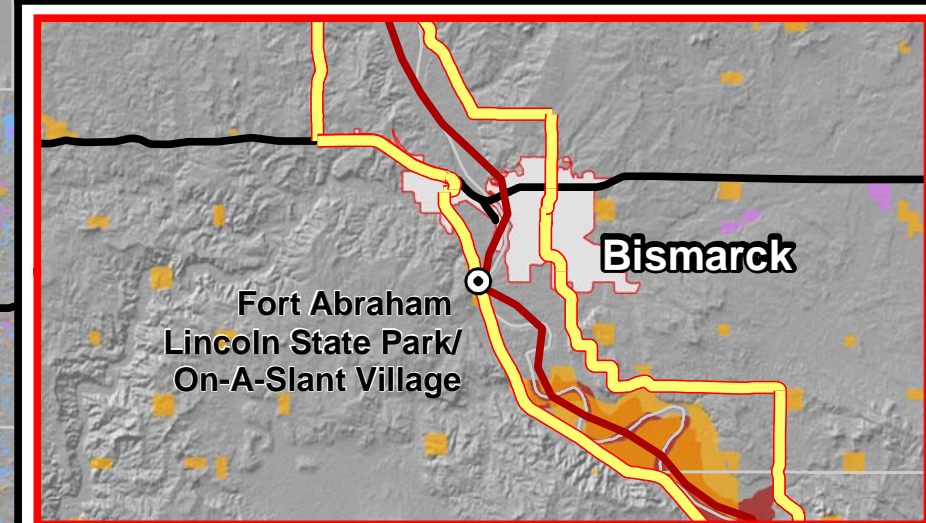
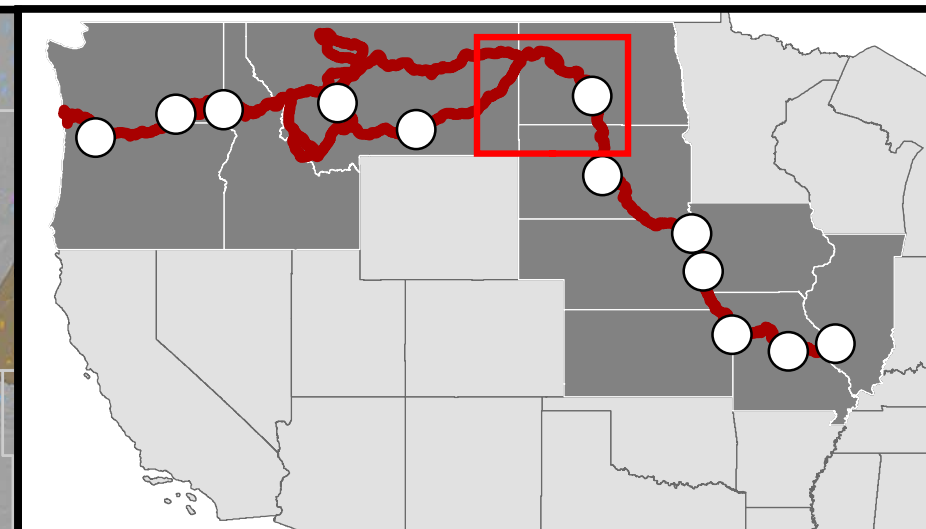
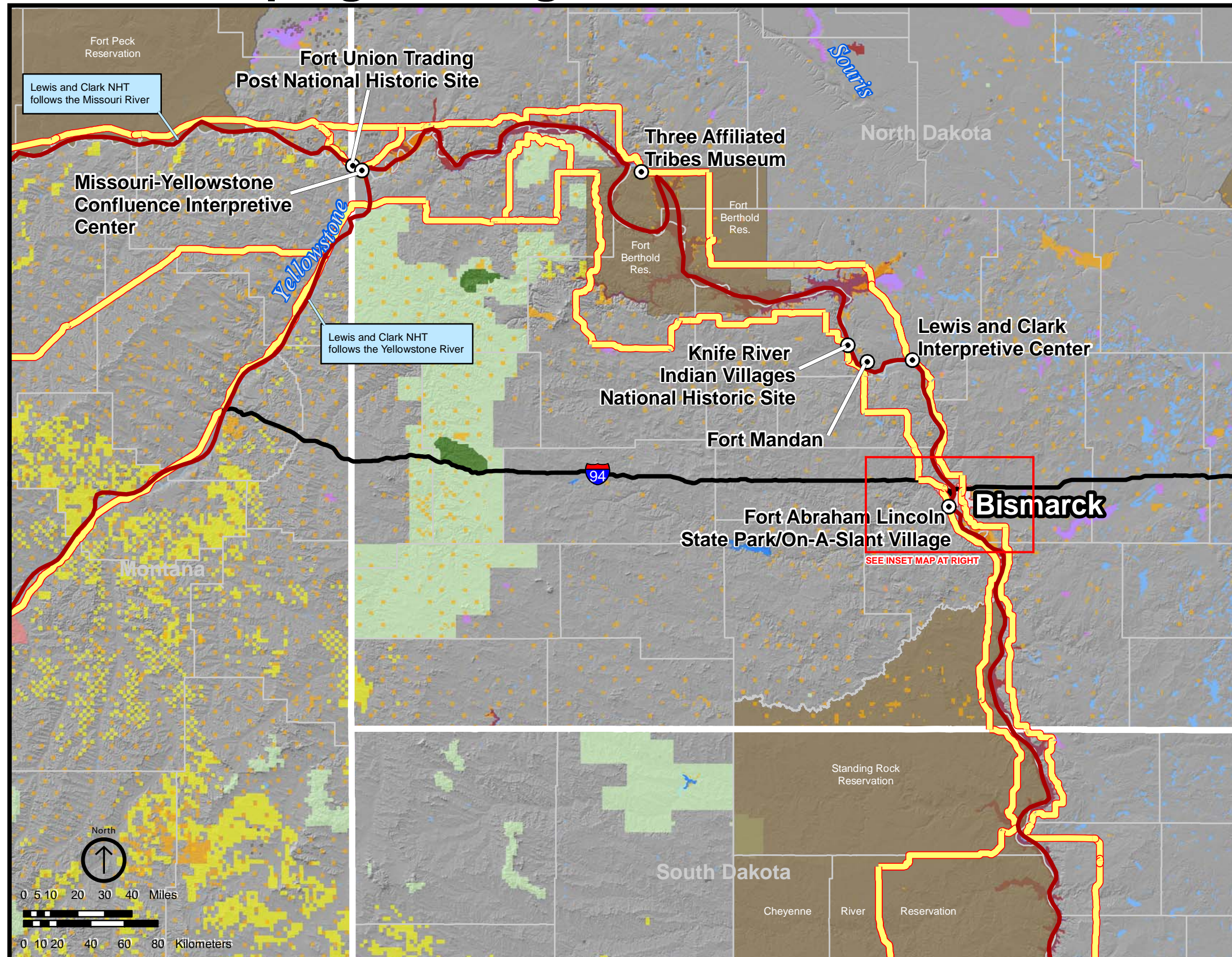




Public Scoping Meeting Location - Bismarck, ND



- Lewis and Clark NHT
- Auto Tour Route
- Urban Area
- Trail Point of Interest

Public Lands

- | | |
|--|---|
| Department of Defense | State Lands |
| Bureau of Reclamation | Tribal Lands |
| Bureau of Land Management | Forest Service |
| Fish and Wildlife Service | Other |
| National Park Service | |

DISCLAIMER: The NPS makes no warranty, express or implied, related to the accuracy or content of this map.
SOURCE: U.S. Census, 2000; National Map, 2005