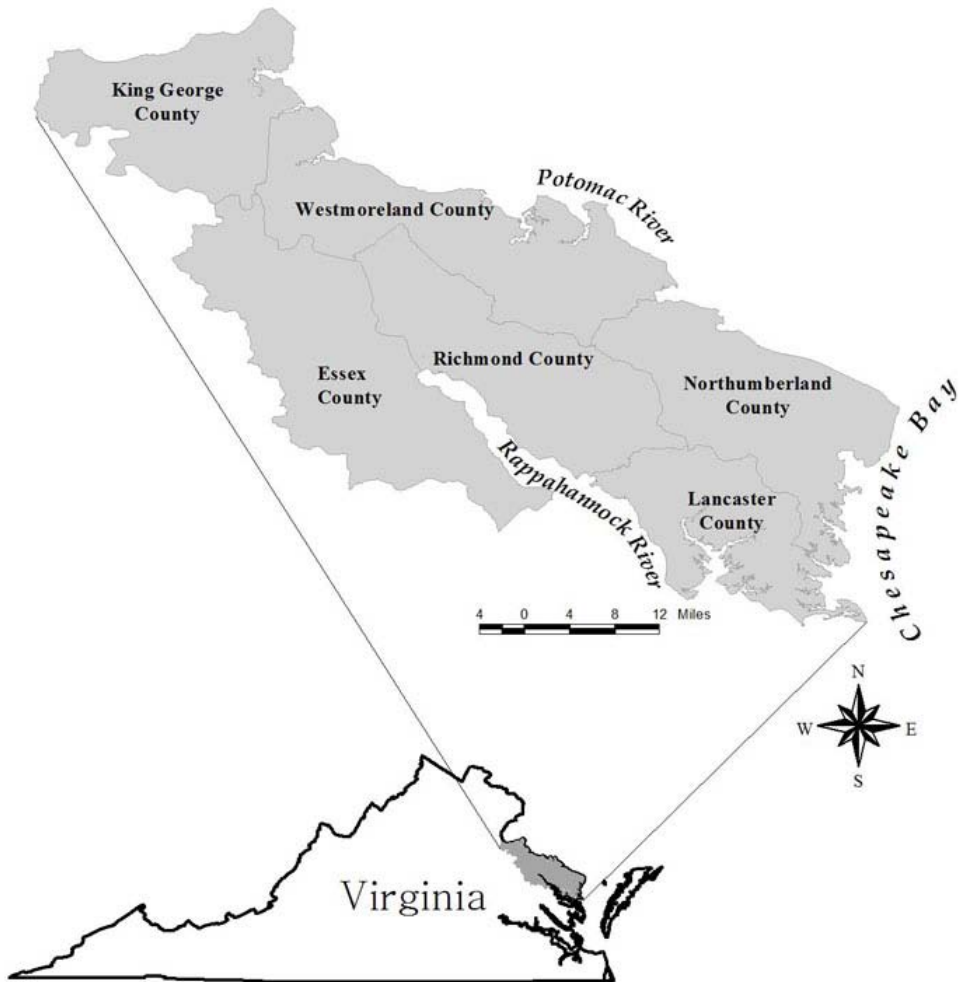


Northern Neck National Heritage Area Feasibility Study



What's a National Heritage Area ?

A place designated by Congress where natural, cultural, historic, and recreational resources combine to form a cohesive, nationally distinctive landscape arising from patterns of human activity shaped by geography.



ESSEX NATIONAL
HERITAGE AREA

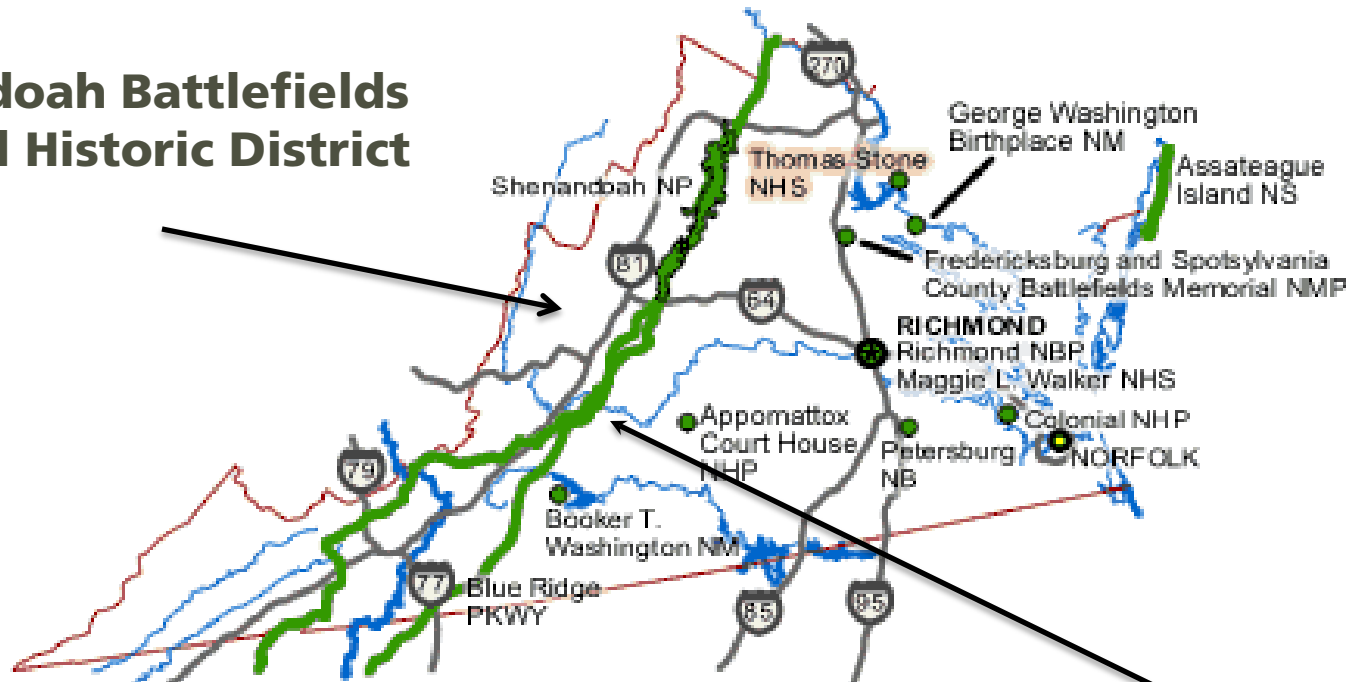


*Where the Story
of American Agriculture
Comes to Life.*



Heritage Areas in Virginia

**Shenandoah Battlefields
National Historic District**



**Journey Through
Hallowed Ground**

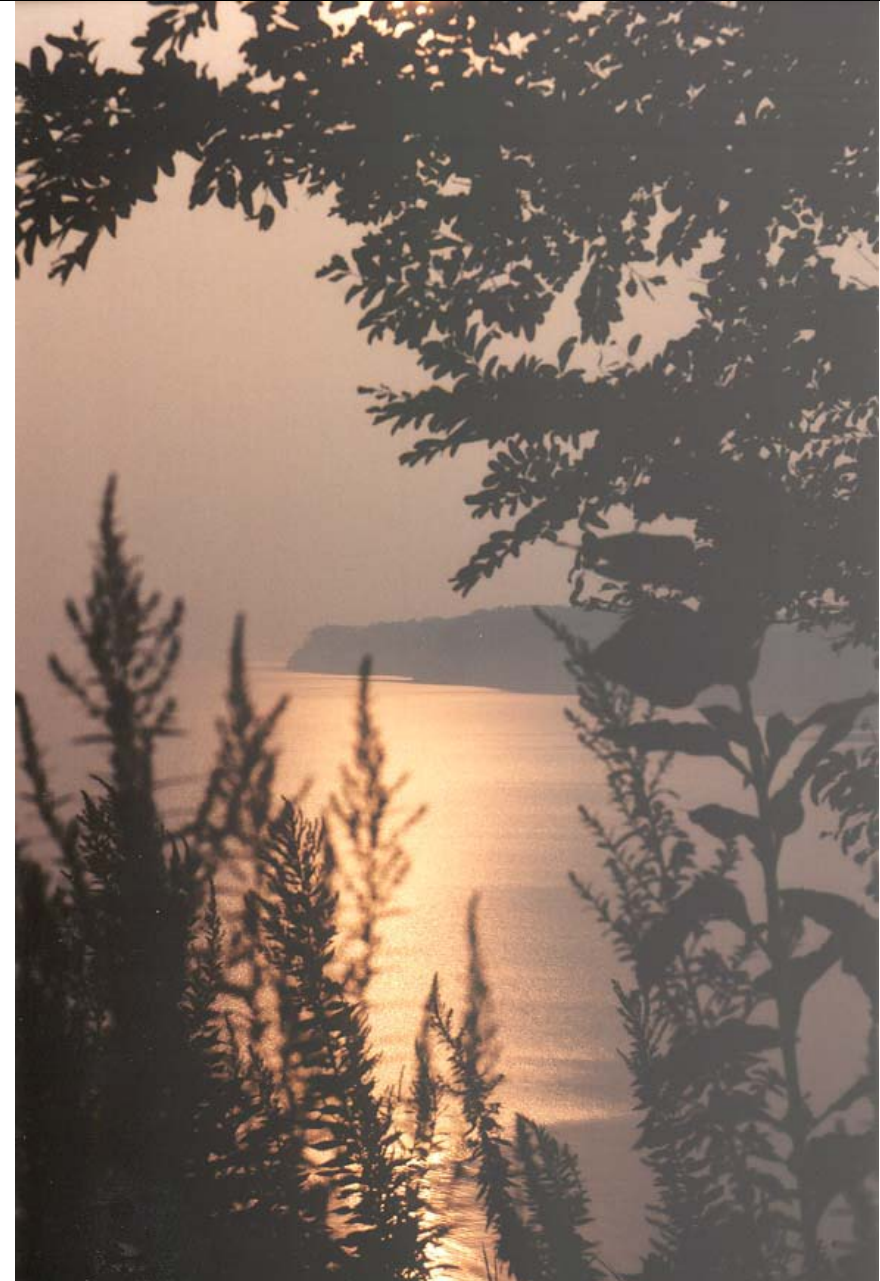


Public Law 111-11 Omnibus Public Lands Management Act of 2009

- Authorized the Secretary of the Interior to conduct a study to determine the suitability and feasibility of designating the study area the Northern Neck National Heritage Area
- The study is subject to the National Environmental Policy Act (NEPA)

Why a Study ?

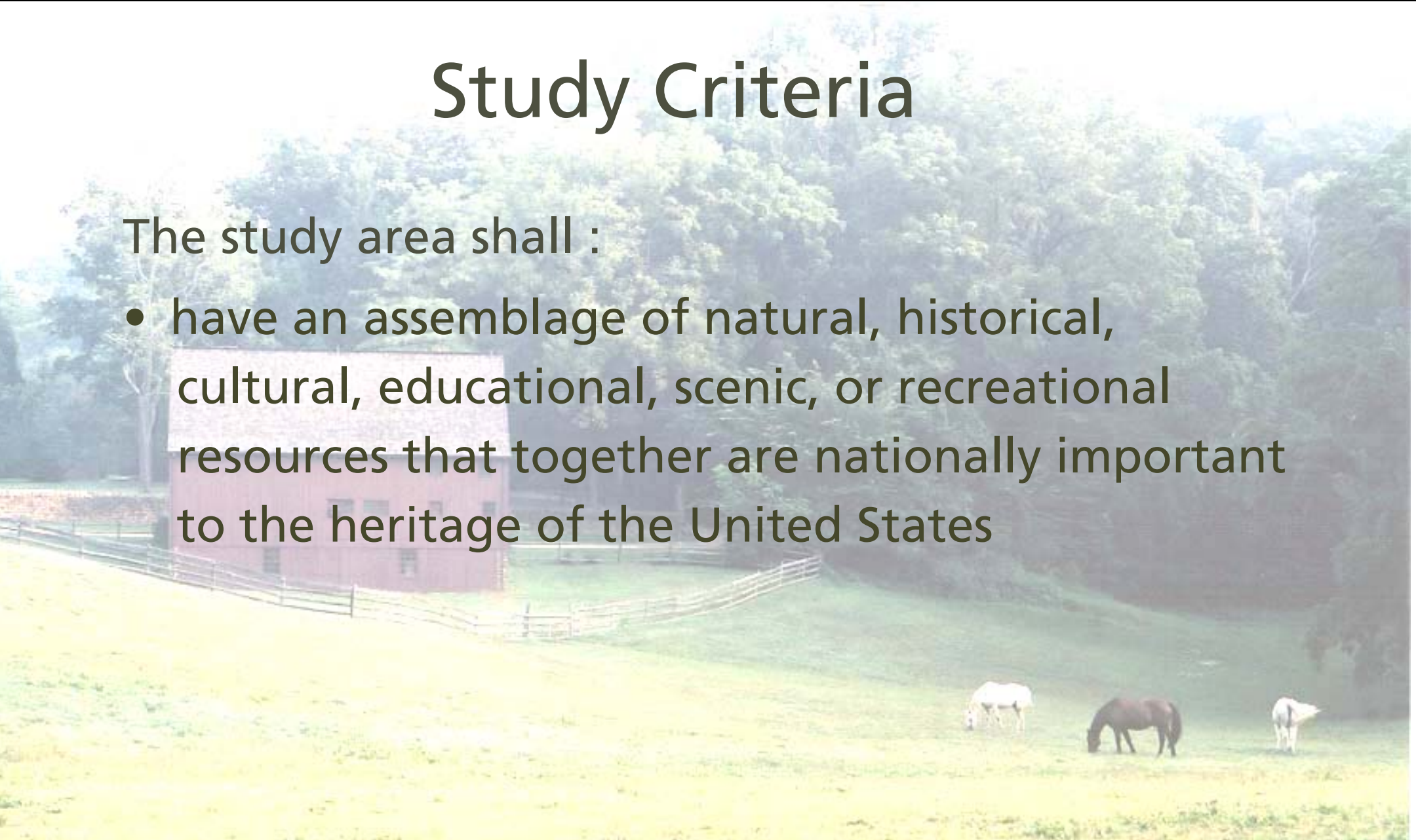
Before Congress considers designation of a National Heritage Area, it needs information about the quality of the resources and whether it meets established criteria for national heritage areas.



Study Criteria

The study area shall :

- have an assemblage of natural, historical, cultural, educational, scenic, or recreational resources that together are nationally important to the heritage of the United States





Study Criteria, continued

- represent distinctive aspects of the heritage of the United States worthy of recognition, conservation, interpretation, and continuing use
- is best managed as such an assemblage through partnerships among public and private entities at the local or regional level
- reflect traditions, customs, beliefs, and folklife that are a valuable part of the heritage of the United States



Study Criteria, continued

- provide outstanding opportunities to conserve natural, historical, cultural, or scenic features
- provide outstanding recreational or educational Opportunities
- contain resources and has traditional uses that have national importance



Study Criteria, continued

- include residents, business interests, nonprofit organizations, and appropriate Federal agencies and State and local governments that are involved in the planning of, and have demonstrated significant support for, the designation and management of the proposed National Heritage Area



Study Criteria, continued

- has a proposed local coordinating entity that is responsible for preparing and implementing the management plan developed for the proposed Heritage Area



Study Criteria, continued

- has the support of the proposed local coordinating entity and appropriate Federal agencies and State and local governments, each of which has documented the commitment of the entity to work in partnership with each other entity to protect, enhance, interpret, fund, manage, and develop the resources located in the study area



Study Criteria, continued

- has developed a conceptual financial plan through the proposed local coordinating entity that outlines the roles of all participants (including the Federal Government) in the management of the proposed Heritage Area
- has a proposal that is consistent with continued economic activity within the area
- has a conceptual boundary map that is supported by the public and appropriate Federal agencies



Study Process – Focus on Criteria

Assessing the Resources

Assemblage of Resources

Conservation Opportunities

Recreational and Educational Opportunities

Tradition/ Folklife

Themes and Resource Integrity



Study Process – Focus on Criteria (con't)

Assessing the Feasibility

Broad Local Involvement

Partnership Commitment

Consistency with Economic Activity

Management Entity

Boundary



Demonstration of Local Support

- Public interest and participation in the study,
- Demonstrable evidence of adequate public support for designation,
- Clearly identify **tangible** partnership commitments from state and local governments and the private sector, and
- Overall agreement by the wide range of affected interests on the structure and role of a representative heritage area management entity.



Related Activities

- Chesapeake Bay Gateways Network
- Captain John Smith Chesapeake National Historic Trail
- Star Spangled Banner National Historic Trail
- George Washington Birthplace National Monument
- Potomac Heritage National Scenic Trail (including the Northern Neck Heritage Trail Bicycling route)



Proposed Schedule

Milestones

- | | |
|--------------------------------------|------------------|
| *Public Scoping | Spring 2010 |
| *Resource Assessment | Summer/Fall 2010 |
| *Theme Development | Fall 2010 |
| *Preliminary Management Alternatives | Spring 2011 |
| *Report | Fall 2011 |



Meaningful & Broad Public Participation

Project Audiences

- Local Citizens & Public Officials of Northern Neck Counties & communities
- American Indian nations (Federally and State recognized tribes)
- Non-governmental Organizations representing wide range of interests (conservation, historic preservation, economic development, etc.)
- State & Federal Agencies
- Community groups
- Other partners



Public Involvement Methods

- Public Meetings & Workshops
- Project Publications
- Press Releases & Local Media
- Webpage and web-based Communication
- Formal Notifications



How You Can Continue to Comment

- Participate in public meetings
- Respond to project newsletters
- Review the study report



Discussion Points

- What resources should be analyzed?
- Who else should be involved ?
- How can you help us contact and include the widest range of interested publics ?
- What are the best ways for us to communicate with the people of the Northern Neck region?



Contact Us

Lisa Kolakowsky Smith , Project Manager

lisa_kolakowsky@nps.gov

215.597.7946

For project updates and to comment:

<http://parkplanning.nps.gov/none>