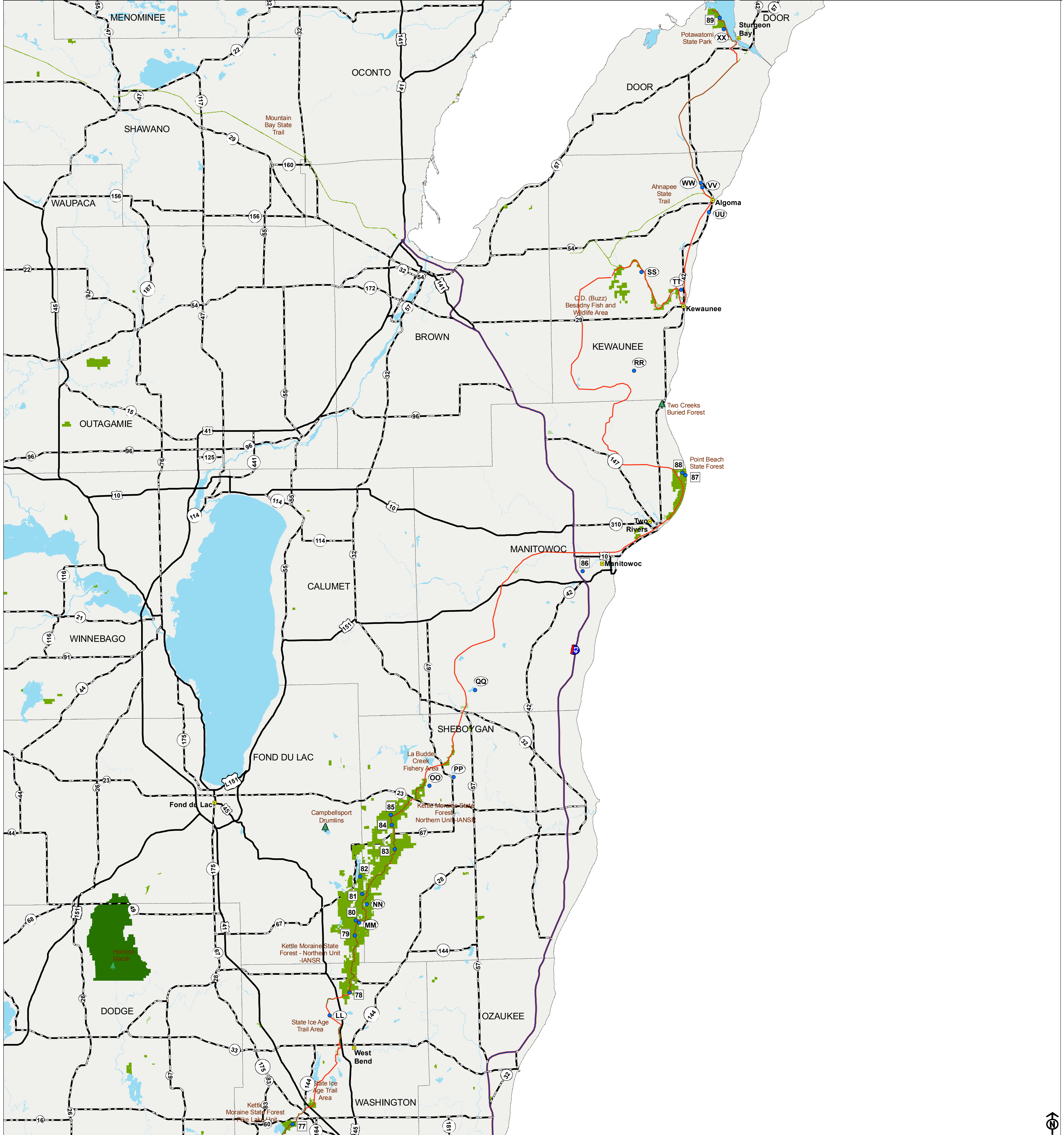


Public and Private Camping Facilities within 2 Miles of the Ice Age National Scenic Trail - Segment Six



Public Campsites	Private Campsites
77. Kettle Moraine State Forest Pike Lake Unit, 3544 Kettle Moraine Road, Hartford, WI, 53027	LL. Timber Trail Campground, 7590 Good Luck, West Bend, WI
78. Northern Kettle Moraine Shelter #1, N1785 County Highway G, Campbellsport, WI, 53010	MM. Bar-N-Ranch Hat Bar Campground, N1635 County Highway GG, Campbellsport, WI
79. Northern Kettle Moraine Shelter #2, N1785 County Highway G, Campbellsport, WI, 53010	NN. Hoeltz Resort and Campground, W9070 Crooked Lake Drive, Cascade, WI
80. Northern Kettle Moraine Maubus Lake Rec Area, N1785 County Highway G, Campbellsport, WI, 53010	OO. Camp Evelyn, W6598 Camp Evelyn Road, Plymouth, WI
81. Northern Kettle Moraine Shelter #3, N1785 County Highway G, Campbellsport, WI, 53010	PP. Plymouth Rock Camping Resort, N2271 Land Street, Plymouth, WI
82. Northern Kettle Moraine Long Lake Rec Area, N1785 County Highway G, Campbellsport, WI, 53010	QQ. Cub Scout World, Camp Rokillo, 14404 Rokillo Road, Kiel, WI
83. Northern Kettle Moraine Shelter #4, N1785 County Highway G, Campbellsport, WI, 53010	RR. Mapleview Campsites, N1267 Norman Rd, Kewaunee, WI
84. Northern Kettle Moraine Shelter #5, N1785 County Highway G, Campbellsport, WI, 53010	SS. Cedar Valley Campground, N598 Cedar Valley Road, Kewaunee, WI
85. Northern Kettle Moraine Greenbush Group Camp, N1785 County Highway G, Campbellsport, WI, 53010	TT. Kewaunee Village RV Park and Campground, 333 Terraqua Drive, Kewaunee, WI
86. Manitowoc County Expo, 4021 Expo Drive, Manitowoc, WI, 54220	UU. Big Lake Campground, 2427 Lake Street, Algoma, WI
87. Point Beach State Forest, 9400 County Highway O, Two Rivers, WI, 54241	VV. Timber Trail Campground, N8382 County Highway W, Algoma, WI
88. Point Beach State Forest, 9400 County Highway O, Two Rivers, WI, 54241	WW. Ahnapee River Trails Campground, E6053 W Wilson Road, Algoma, WI
89. Potawatomi State Park, 3740 Park Drive, Sturgeon Bay, WI, 54235	XX. Tranquil Timbers RV Resort, 3668 Grondin Road, Sturgeon Bay, WI

0 3 6 12 18 24 Miles

The campsites are numbered/lettered from west to east along the IANST. Not all labels are visible, but their information is still in the table below. More information for each campsite is available in our database.

Only the Public Lands near the IANST are presented on this map. All others have been removed for a clearer presentation.

Data Sources:
All Public Lands layers and hydrography layers are from the Department of Natural Resources. The campsite and IANST layers were created on site.

- Ice Age National Scenic Reserve Unit
- Proposed IANST
- Public Campsites
- Private Campsites
- Interstate Highway
- US Highway
- State Highway
- Trail_CertSegments_Ln
- City and County Parks
- DNR Managed Lands
- County Forest Lands
- Federal Lands
- Major Water Bodies
- County Boundaries