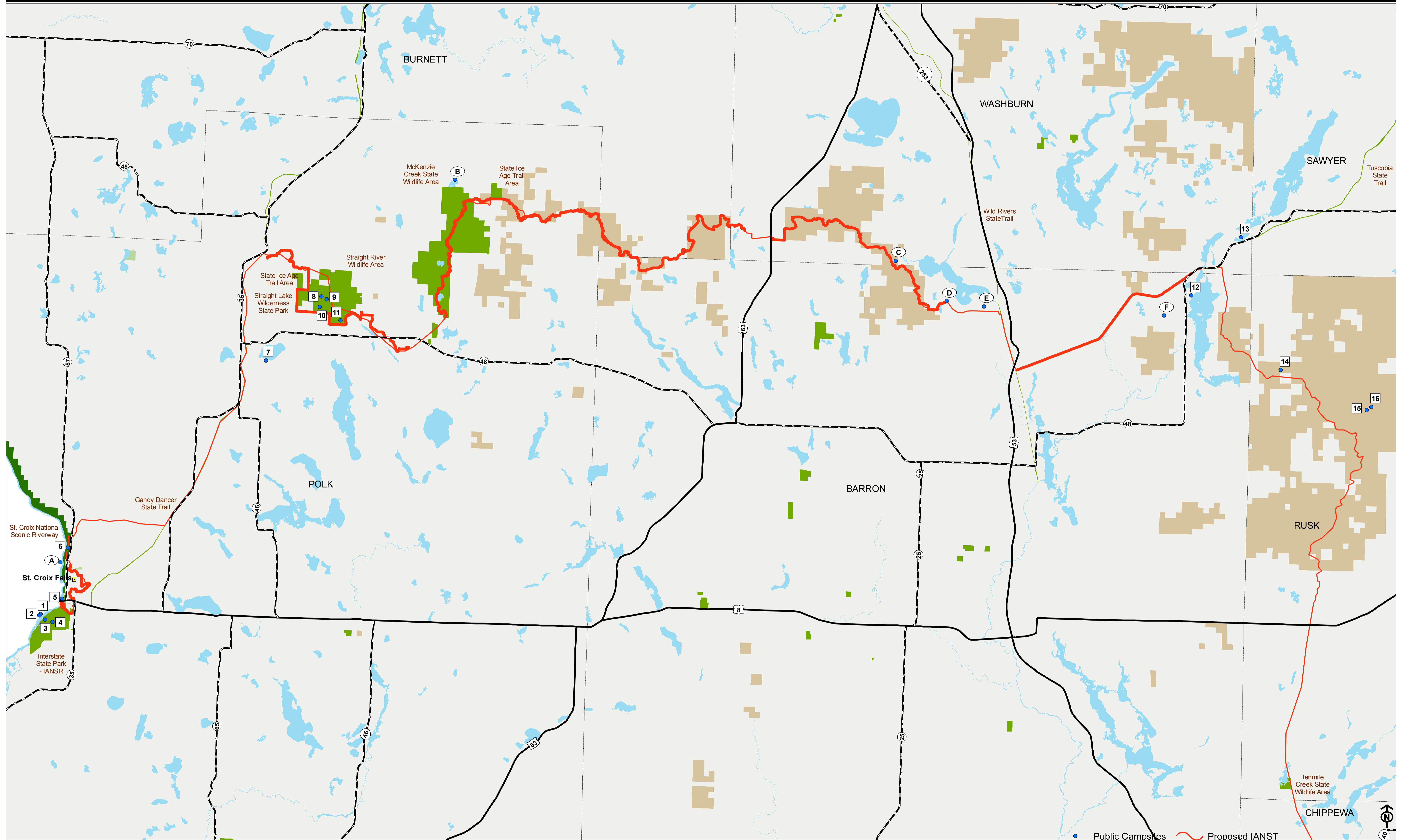
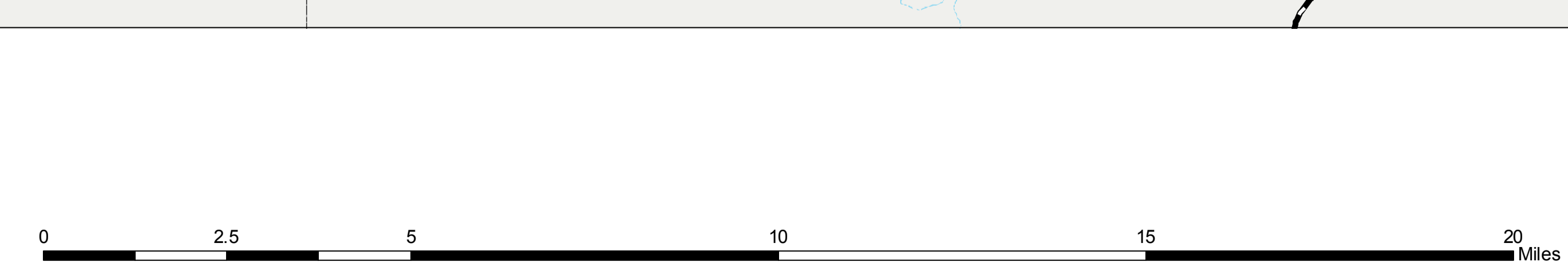


Public and Private Camping Facilities within 2 Miles of the Ice Age National Scenic Trail - Segment One



Public Campsites	Private Campsites
1. Minnesota Interstate Park, US Highway 8 / State Highway 95, Box 254, Taylor Falls, MN, 55084	A. Camp Wauab-O-Jeeg, 2185 Chicago Street, Taylor Falls, MN
2. Minnesota Interstate Park, US Highway 8 / State Highway 95, Box 254, Taylor Falls, MN, 55084	B. Clam Falls Campground, 642 336th Avenue, Frederic, WI
3. Interstate State Park, State Highway 35, Box 703, St. Croix Falls, WI, 54024	C. White Tail Ridge, NYS, Shallow Lake Road, Sarona, WI
4. Interstate State Park, State Highway 35, Box 703, St. Croix Falls, WI, 54024	D. LE Phillips Scout Reservation, 2900C, 16th Street, Rice Lake, WI
5. Interstate State Park, State Highway 35, Box 703, St. Croix Falls, WI, 54024	E. Shady Rest Campground, 2883 17 3/4 Street, Rice Lake, WI
6. St. Croix National Scenic Riverway, 401 North Hamilton Street, St. Croix Falls, WI, 54024	F. K & C Country Air Campground, 2565 28th Avenue, Birchwood, WI
7. Big Butternut Park, 1320 South Shore Drive, Luck, WI, 54993	
8. Straight Lake State Park and Wildlife Area	
9. Straight Lake State Park and Wildlife Area	
10. Straight Lake State Park and Wildlife Area	
11. Straight Lake State Park and Wildlife Area	
12. Waldo Carson/Reed Codrington Park, 2717 29th Avenue, Birchwood, WI, 54817	
13. Doolittle County Park, Doolittle Road, Birchwood, WI, 54817	
14. Murphy Flowage Campground and Park, County Highway F, WI	
15. Audie Flowage Park, Perch Lake Road	
16. Perch Lake Campground, Perch Lake Road	



The campsites are numbered/lettered from west to east along the IANST. Not all labels are visible, but their information is still in the table below. More information for each campsite is available in our database.

Only the Public Lands near the IANST are presented on this map. All others have been removed for a clearer presentation.

Data Sources: All Public Lands layers and hydrography layers are from the Department of Natural Resources. The campsite and IANST layers were created on site.

- Public Campsites
- Private Campsites
- City and County Parks
- DNR Managed Lands
- County Forest Lands
- Federal Lands
- Major Water Bodies
- County Boundaries
- Interstate Highway
- US Highway
- State Highway
- Certified IANST
- Proposed IANST