

Fort Caroline Memorial Relocation

Timucuan Ecological and Historic Preserve



Figure 1. Flooded Entrance to Current Exhibit

Purpose and Need for Relocating the Fort Caroline Memorial Exhibit

The current Fort Caroline Memorial exhibit, located along the bank of the St. Johns River, has been subject to chronic storm and flooding damage. The park continues to repair the exhibit from these damages, but such a response is no longer sustainable or cost effective. The National Park Service recognizes the continued challenges of maintaining the fort exhibit at its current location and proposes to move the Fort Caroline Memorial exhibit upland as a long-term solution. The proposed relocated memorial exhibit will avoid flooding and storm impacts, improve visitor experience, and continue to memorialize and interpret the French settlers' history.

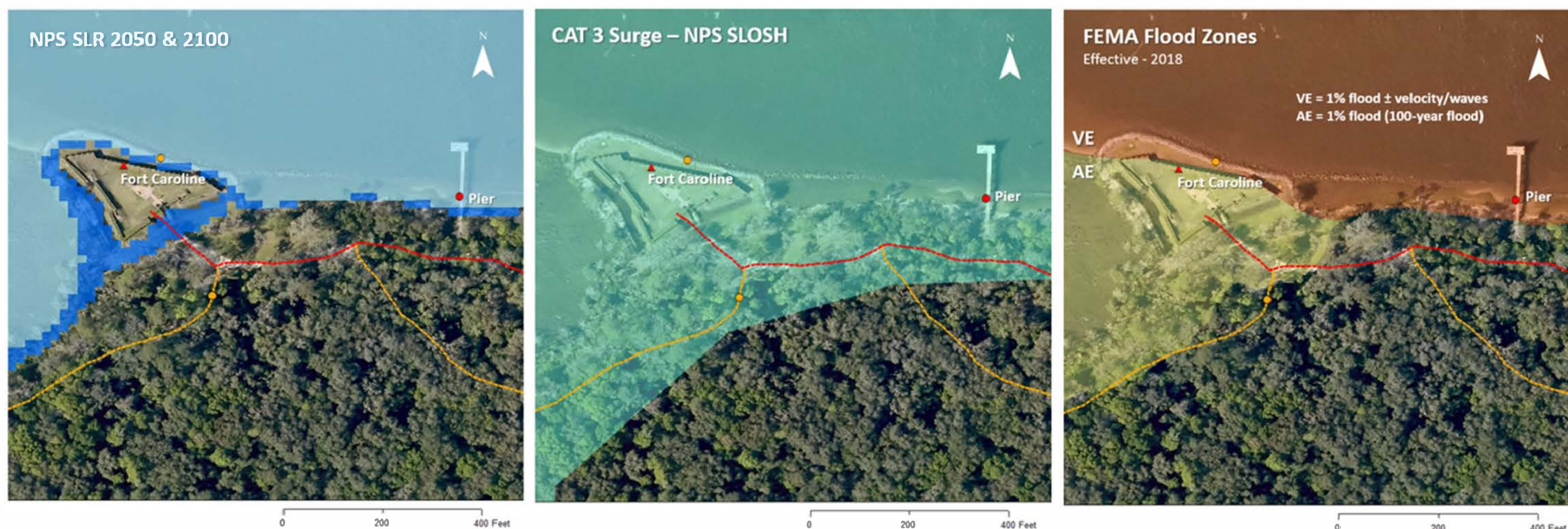


Figure 2. Modeling of Future Sea Level Rise, CAT 3 Hurricane Surge, and recent FEMA Flood Zones at current exhibit location

The location of the Fort Caroline Memorial exhibit in relation to the St. Johns River is highly vulnerable to storm surge, sea level rise, and frequent flooding from king tides. Figure 2 illustrates anticipated sea level rise in the years 2050 and 2100, the expected storm surge from a Category 3 hurricane, and the FEMA flood elevations for the current location of the Fort Caroline Memorial exhibit. Below, Figures 3 and 4 show examples of chronic flooding events at the site which often close portions or all of the Fort to the public for health and safety reasons.



Figure 3. Figure 3 Flooded Walkway on NE corner of Exhibit



Figure 4. Flooded walkway between St Johns river and Fort

Fort Caroline Memorial Relocation

Timucuan Ecological and Historic Preserve



Proposed Relocation

After studying the environmental stressors and risks of the area, the National Park Service is proposing to move the Fort Caroline Memorial exhibit to a higher elevation of at least +14 ft above sea level. This will move the exhibit out of the FEMA floodplain and significantly reduce flooding events and site closures. Figure 1 shows the topography of the area through LiDAR, a technology that creates high-resolution models of ground elevation. This map has assisted the National Park Service in identifying potential locations for the new exhibit.

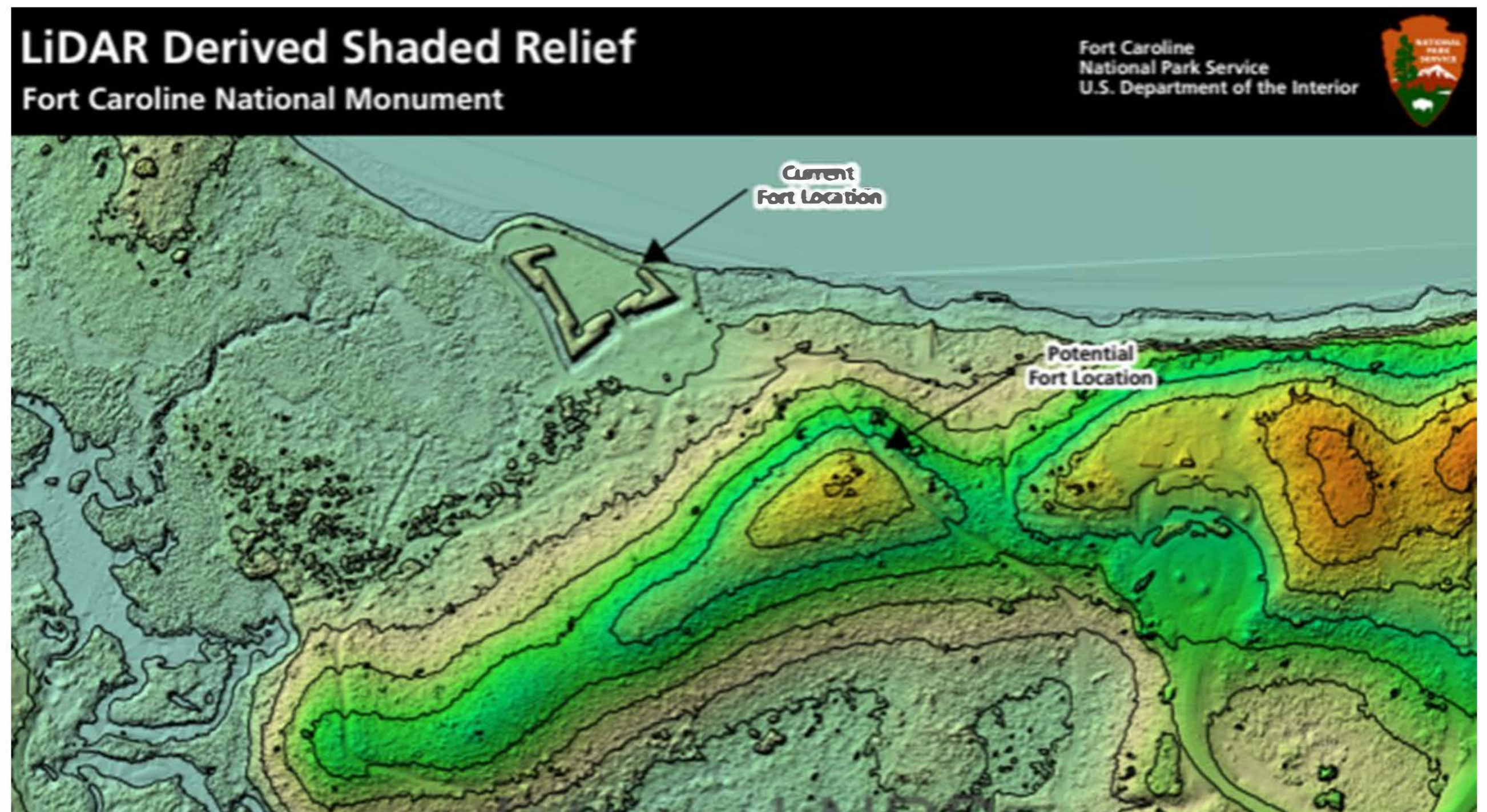


Figure 1. Map showing the elevation of the proposed Fort location compared to the existing Fort. (NPS 2021)

Proposed New Fort Caroline Exhibit

The current Fort Caroline Memorial exhibit was built in the 1960s and is two-thirds the size of what historians believe the original fort was. The location of the original Fort Caroline is unknown. Figure 2 shows a drawing of the original Fort Caroline, Figure 3 is an image of the current Fort Caroline Memorial exhibit, and Figure 4 shows the proposed relocation site.

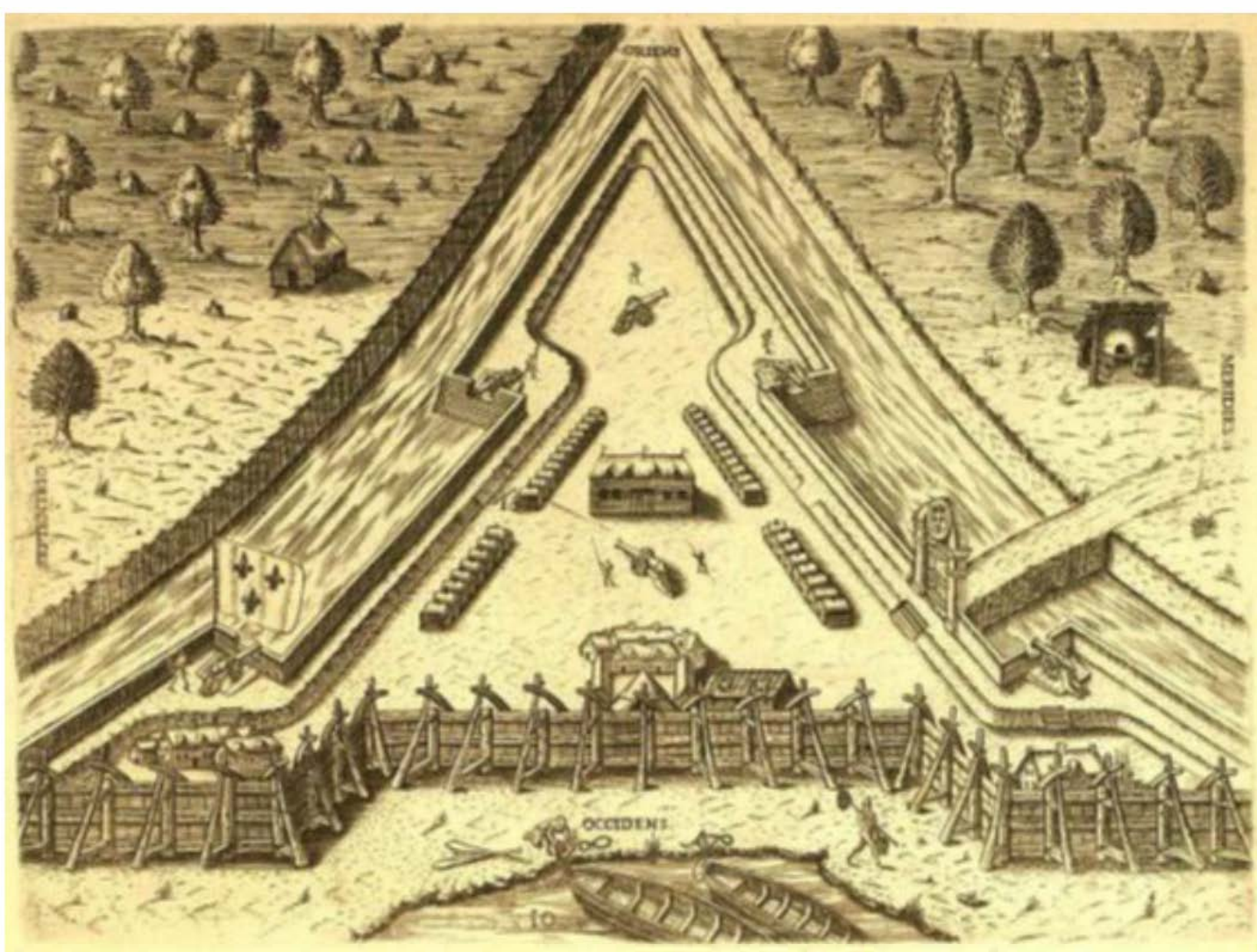


Figure 2. Drawing of the original Fort Caroline.

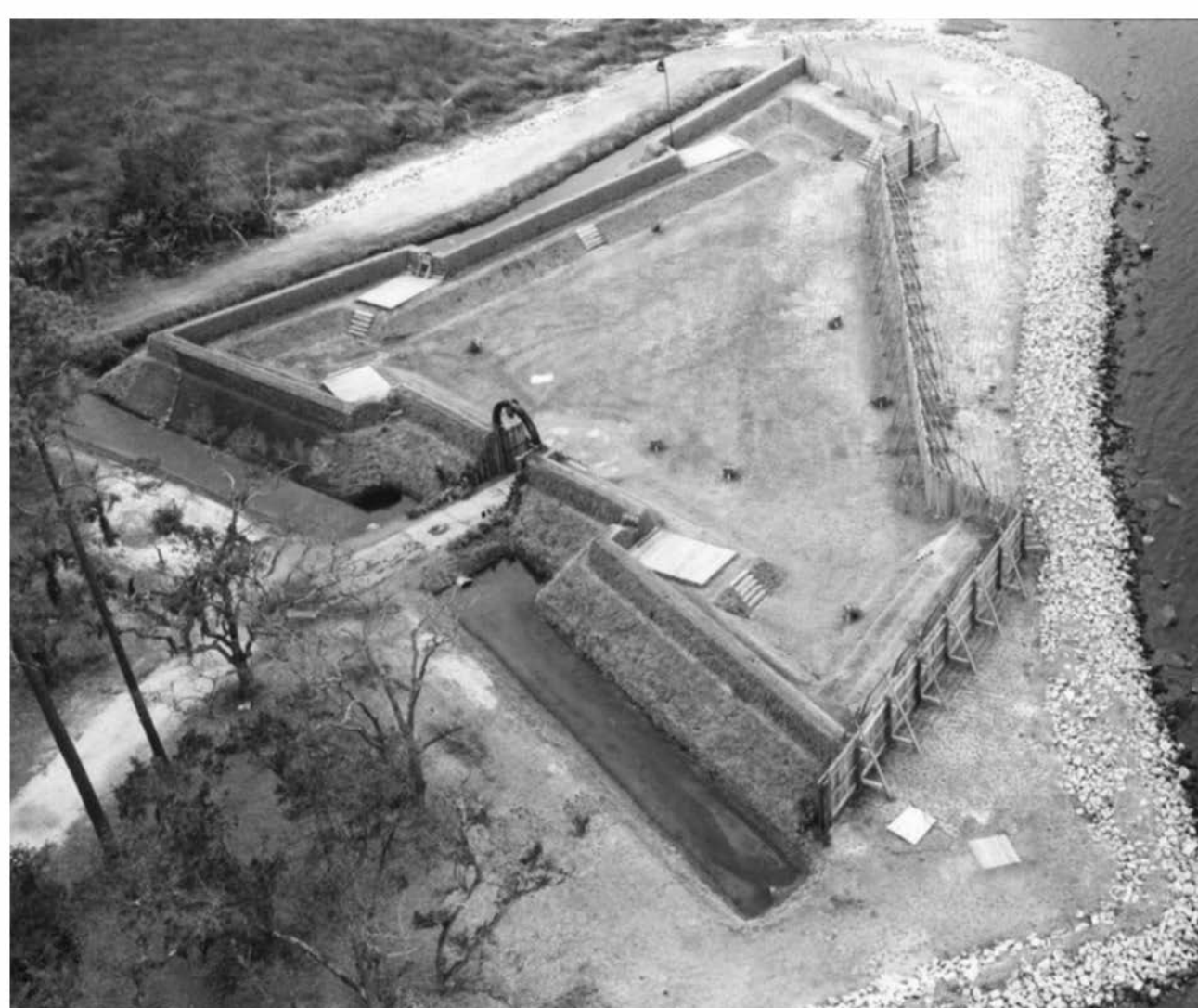


Figure 3. Aerial of Fort Caroline in the 1960s.



Figure 4. Proposed location compared to existing Fort.

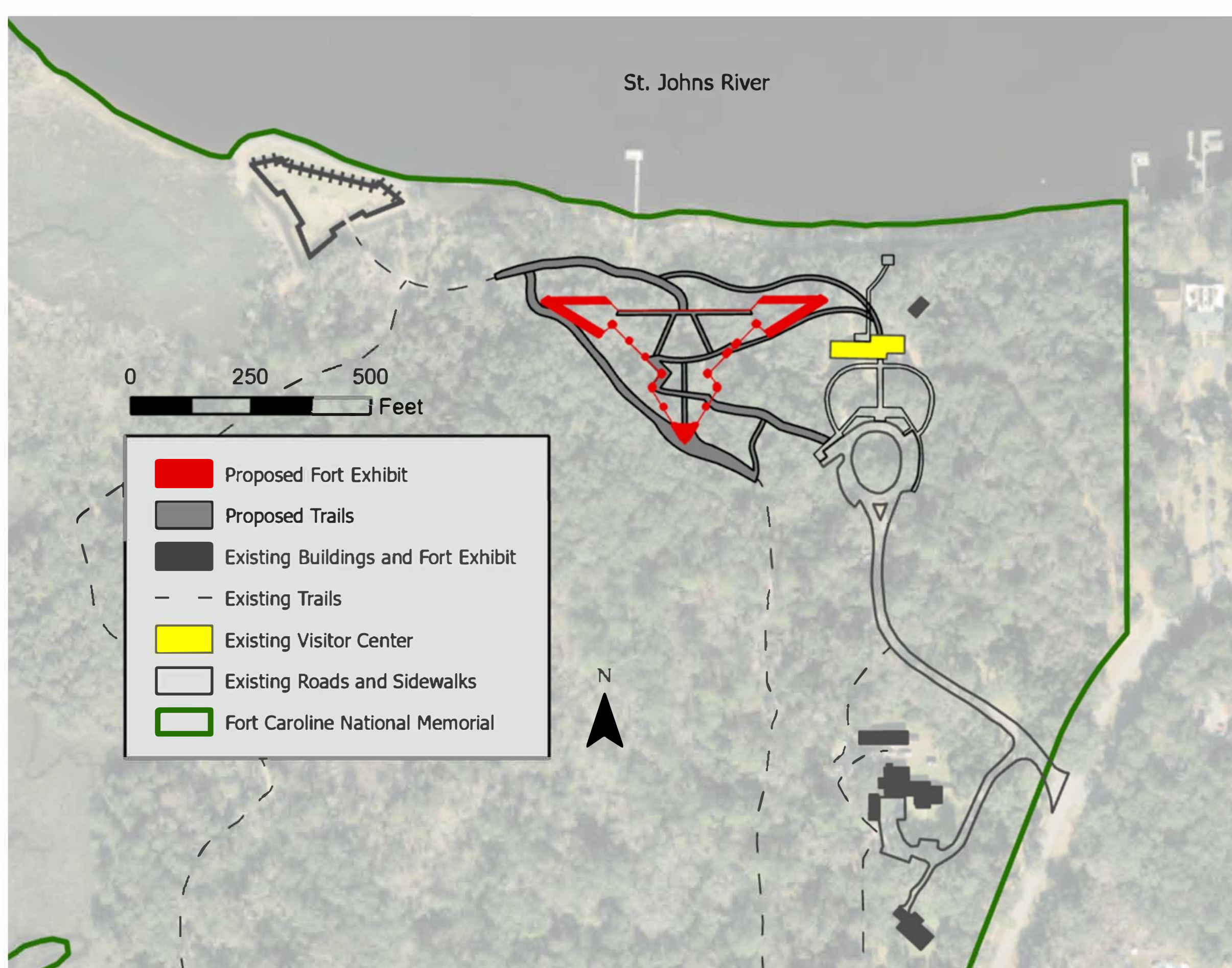


Figure 5. Proposed Fort Caroline Memorial exhibit location and paths.

The proposed Fort Caroline Memorial exhibit would be closer to the visitor center and would incorporate existing and new ADA accessible trails, a gathering site for larger groups, and maintain and interpret the connection of the fort to the St. Johns River (Figure 5).

The existing Fort Caroline Memorial exhibit would be removed from the landscape and natural revegetation would be encouraged. The National Park Service plans to place educational signage where the existing fort was located.

We want to hear from you!

Comment at the link below or scan the QR code.
<https://parkplanning.nps.gov/FortCarolineRelocation>



Fort Caroline Memorial Relocation

Timucuan Ecological and Historic Preserve



Proposed Design

The proposed Fort Caroline Memorial exhibit would use the best available historic research to determine and recall key characteristics of the original Fort Caroline but would not attempt to recreate a model of the original structure. Rather, it would selectively build out portions of the footprint to serve as a framework for understanding the physical scope and space the original fort would have occupied. This will make the new memorial more historically accurate in scale.



Figure 1. Fort archway with coat of arms salvaged from current fort exhibit.



Figure 2. Tiered gathering space with views of the St. Johns River.



Figure 3. Corner monuments and perimeter markers outlining the historic Fort Caroline footprint.



Figure 4. Corner overlooks and accessible paths.

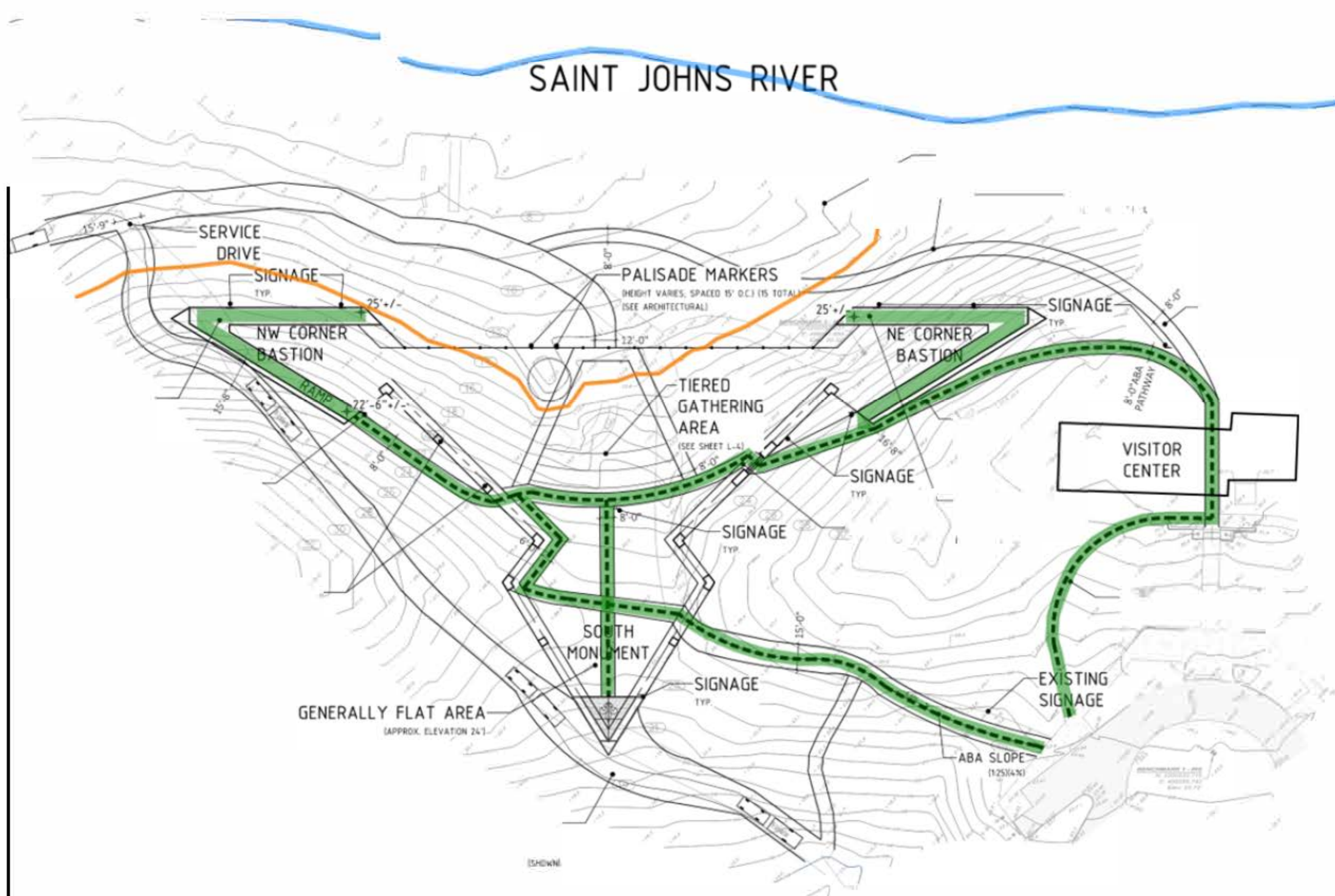


Figure 5. Proposed Fort Caroline Memorial exhibit design details.

Project Timeline

Civic Engagement	July 7 - August 6, 2025
Public Review of the EA	December 2025- January 2026
Decision Document Released	Winter 2026
Construction	Winter 2026-Spring 2027

We want to hear from you!

Comment at the link below or scan the QR code.
<https://parkplanning.nps.gov/FortCarolineRelocation>

