



Figure 1. Flooded Fort Caroline

Timucuan Ecological and Historic Preserve protects the natural ecology of over 46,000 acres of lands and waters and over 12,000 years of human history along the St. Johns and Nassau rivers in northeast Florida.

The Fort Caroline exhibit memorializes the French colonists who came to North America during the 16th century seeking religious freedom, wealth, and territorial expansion. The current exhibit provides visitors with a scaled representation of what the original Fort is thought to have looked like. The actual Fort location is lost to history and no French or Spanish artifacts or features have ever been located to pinpoint the site.

relocate the Fort Caroline Memorial to an upland location out of the floodplain and away from the St. Johns River. The current Fort Caroline Memorial exhibit, located along the bank of the St. Johns River, has been subject to chronic storm and flooding damage. The park continues to repair the exhibit from these damages, but such a response is no longer sustainable or cost effective. The new Fort Caroline Memorial exhibit will honor the French settlers and highlight characteristics of the historic Fort without recreating a model of the original structure. The current Fort Caroline exhibit will be removed from the landscape and native vegetation will be encouraged to reestablish naturally.

The National Park Service proposes to

**In-Person and
Virtual Public
Meeting**

July 23, 2025

6 - 8 p.m. EST

**Gulliford
Community
Center**

You're Invited!

Learn About the Project and Join the Conversation

The purpose of the in-person and virtual public meeting is to explain the project in detail and allow the opportunity for the community to ask questions or voice any concerns. There will be a presentation about the project, project milestones, and how to submit comments. Following the presentation and formal Q&A, NPS staff will be available for additional questions.

**Gulliford Community Center, 4875 Ocean St,
Jacksonville, FL 32233**

**Scan for meeting
link and to
submit
comments!**



[https://parkplanning.nps.gov/document.cfm?
parkID=375&projectID=118467&documentID=145762](https://parkplanning.nps.gov/document.cfm?parkID=375&projectID=118467&documentID=145762)

Proposed Fort Caroline Memorial Exhibit Location

The proposed memorial exhibit would be moved upland and to the east, closer to the Visitor Center. The new memorial will incorporate existing and new ADA accessible trails with site gathering opportunities and connection to the St. Johns River.

The proposed new memorial would use the best available historic research to determine and recall key characteristics of the original Fort Caroline but will not attempt to recreate a model of the original structure. Rather, it would selectively build out portions of the footprint to serve as a framework for understanding the physical scope and space the original fort would have occupied. This will make the new memorial more historically accurate in scale.

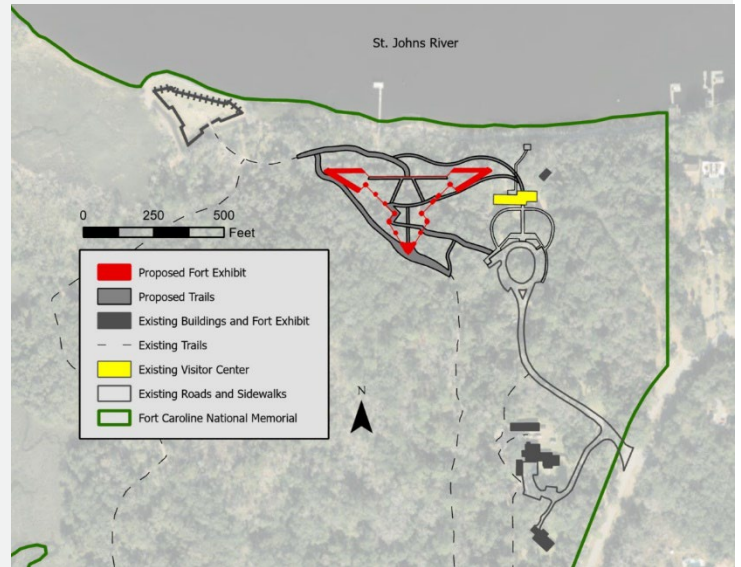


Figure 2. Proposed location for new exhibit

Civic Engagement Public Comment Period

The public comment period for this project is open July 7 – August 6, 2025. This comment period is an information gathering process through which the public is invited to express views on the information, issues, and alternatives that need to be addressed in the forthcoming Environmental Assessment (EA).

We invite you to attend the in-person/virtual public meeting to learn more about the project and provide comments; please see our PEPC website for the most up to date information.



Figure 3. Flooding at Fort Caroline

Comments on the project may be submitted electronically at

<https://parkplanning.nps.gov/FortCarolineRelocation>

Written comments may be mailed to:

Superintendent

Attn: Relocate Fort Caroline Memorial

Timucuan Ecological and Historic Preserve 13165

Mount Pleasant Rd, Jacksonville FL, 32225

Mailed comments must be postmarked by August 6, 2025.

If you would like more information or have questions related to this project, please contact Steven Kidd, Chief of Science and Resource Management, 904-805-7510 or at Steven_Kidd@nps.gov.

Thank you for your interest in the project to Relocate the Fort Caroline Memorial!

<i>Project Milestones</i>	<i>Target Schedule</i>
Civic engagement	July 7 – August 6, 2025
Public review of the EA	December 2025- January 2026
Decision Document Released	Winter 2026
Construction	Winter 2026- Spring 2027

Before including your address, telephone number, email address, or other personally identifiable information in your comments, you should be aware that your entire comment (including your personally identifiable information) may be made publicly available at any time. While you can ask us to withhold your personally identifiable information from public review, we cannot guarantee that we will be able to do so.