



U.S. Department of the Interior  
National Park Service

# Lincoln Memorial Reflecting Pool & Grounds Rehabilitation

18 March 2010





# Agenda

Final Design Preferred Alternative

Security Barrier/ADA Access

West Reflecting Pool Plaza

Pool Walks

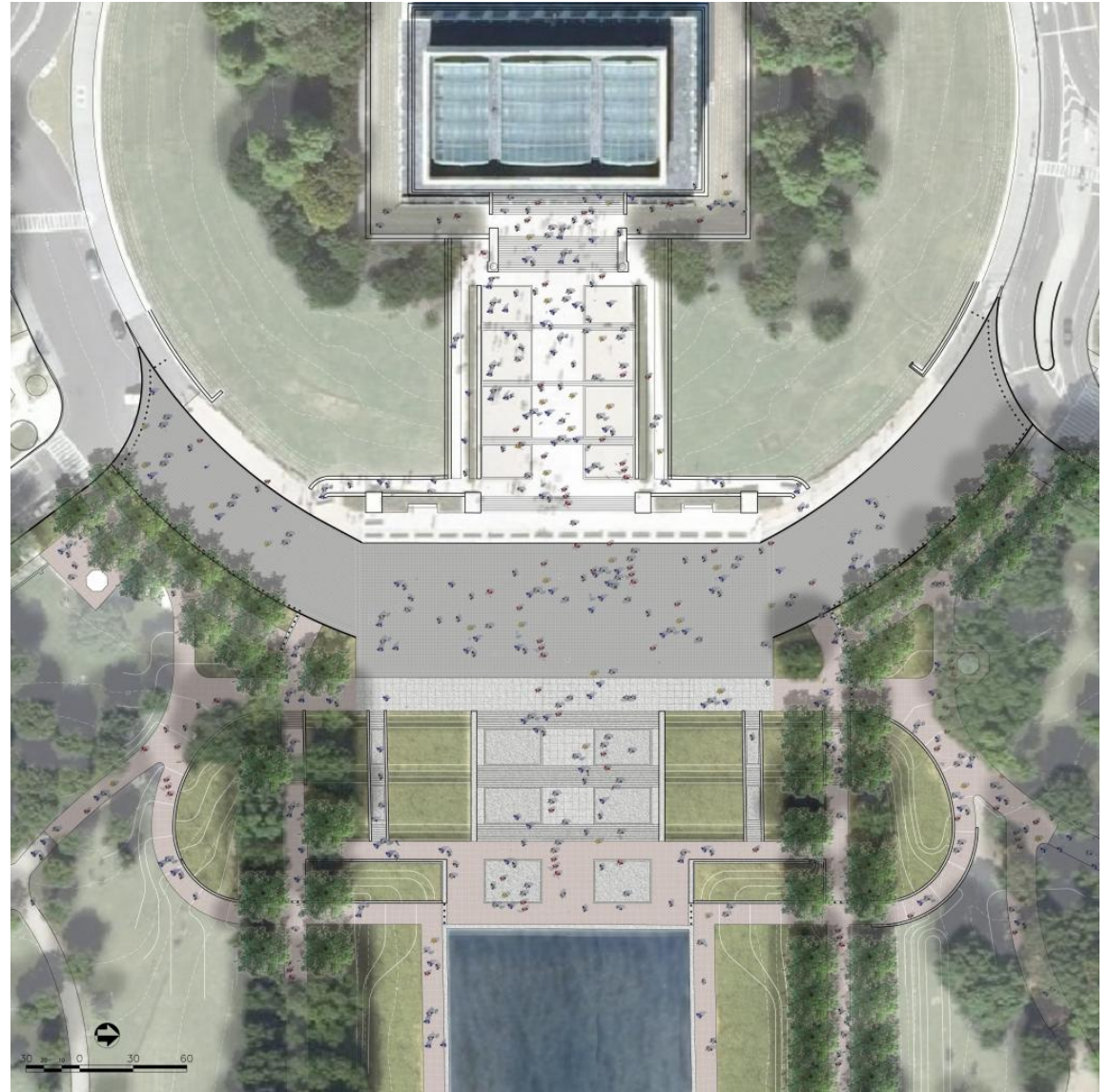
Elm Walks

Water System



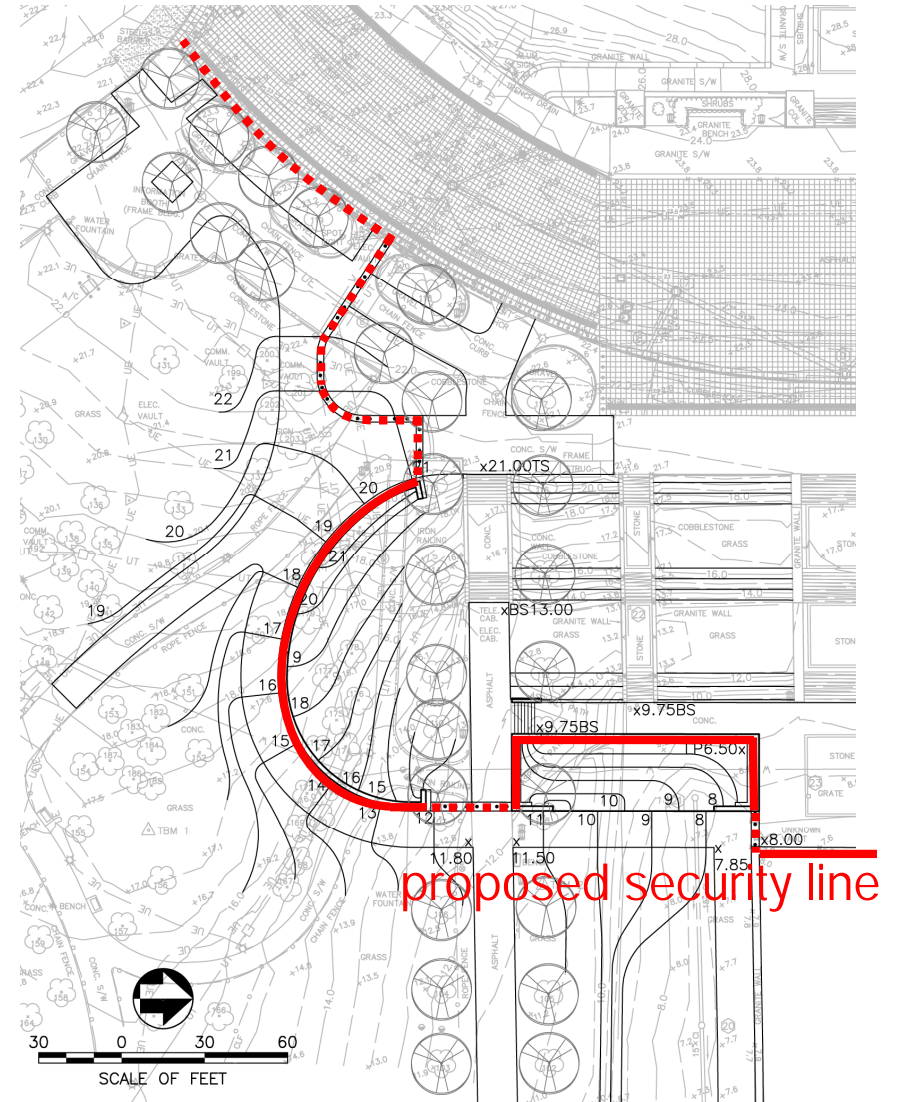
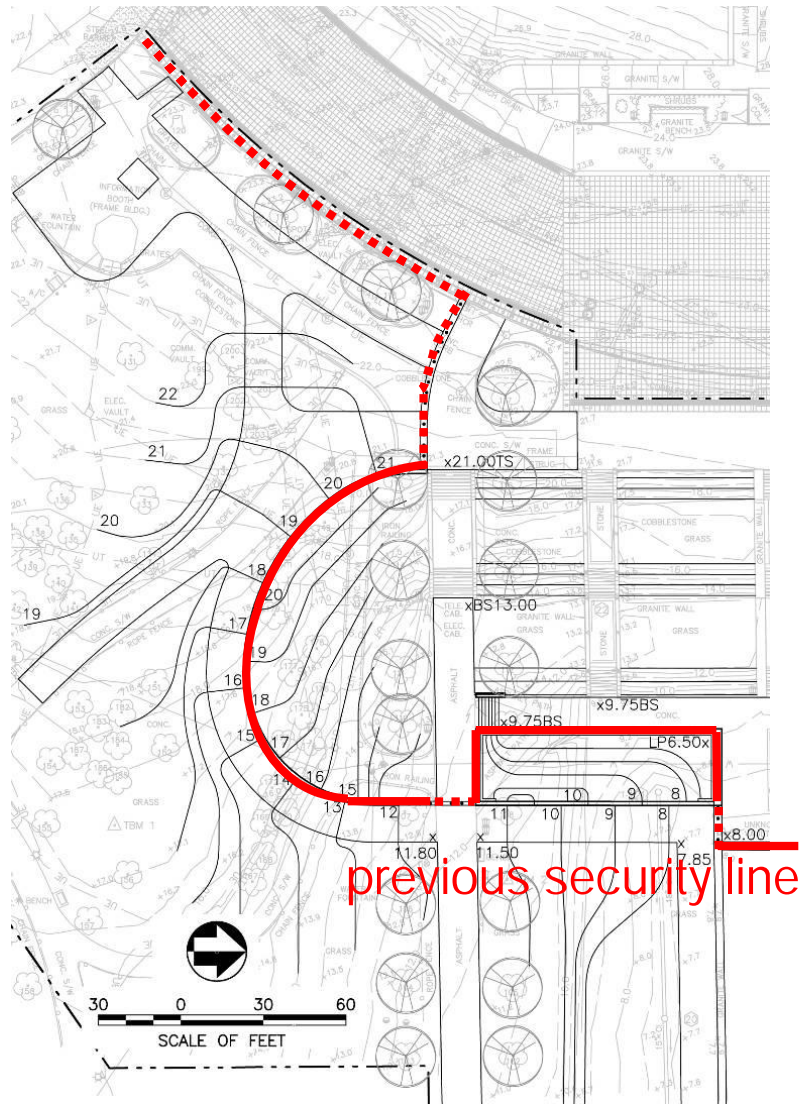


# Final Design Preferred Alternative

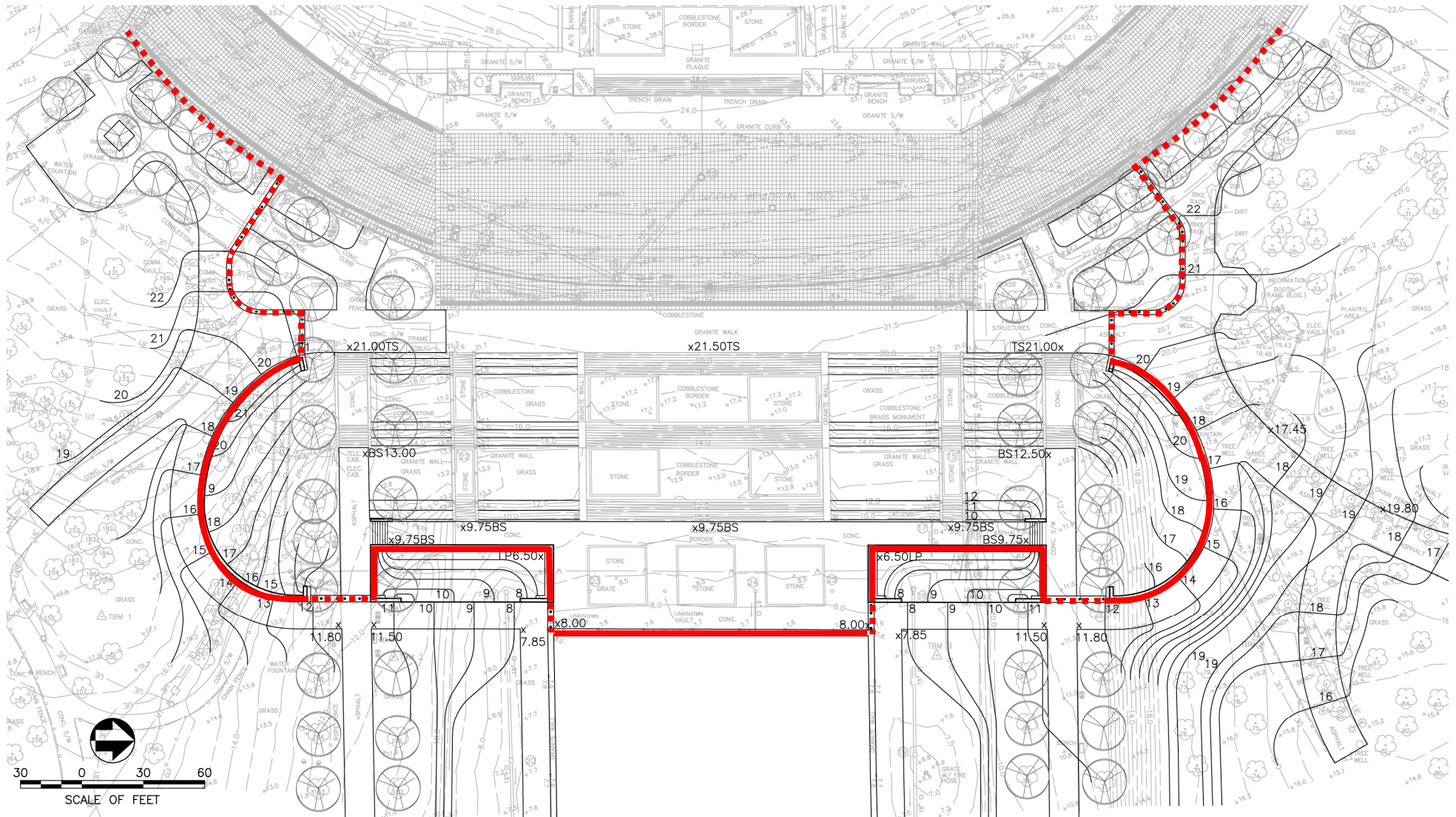


# Security Walls

## Revised Security Line Comparison

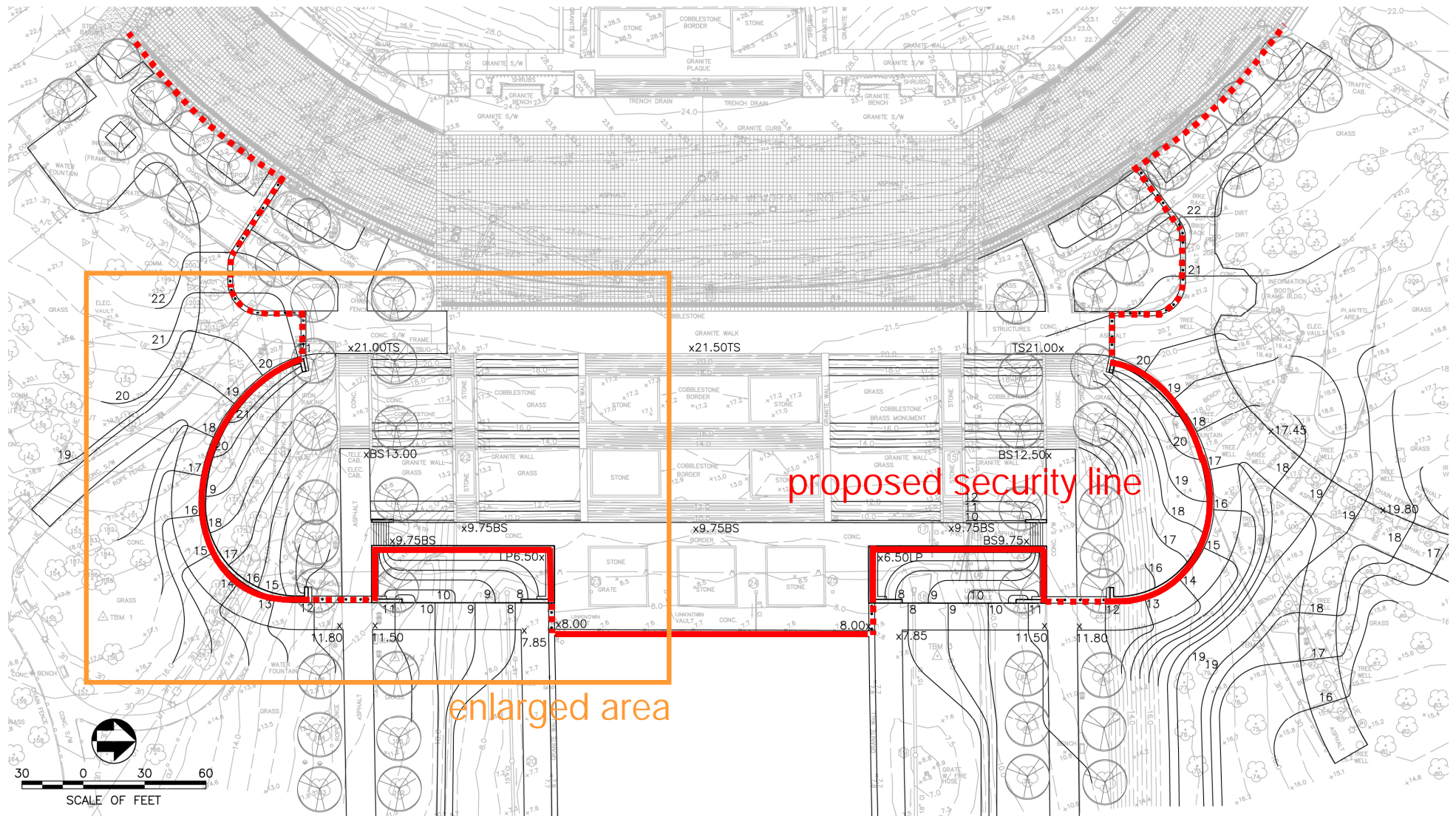




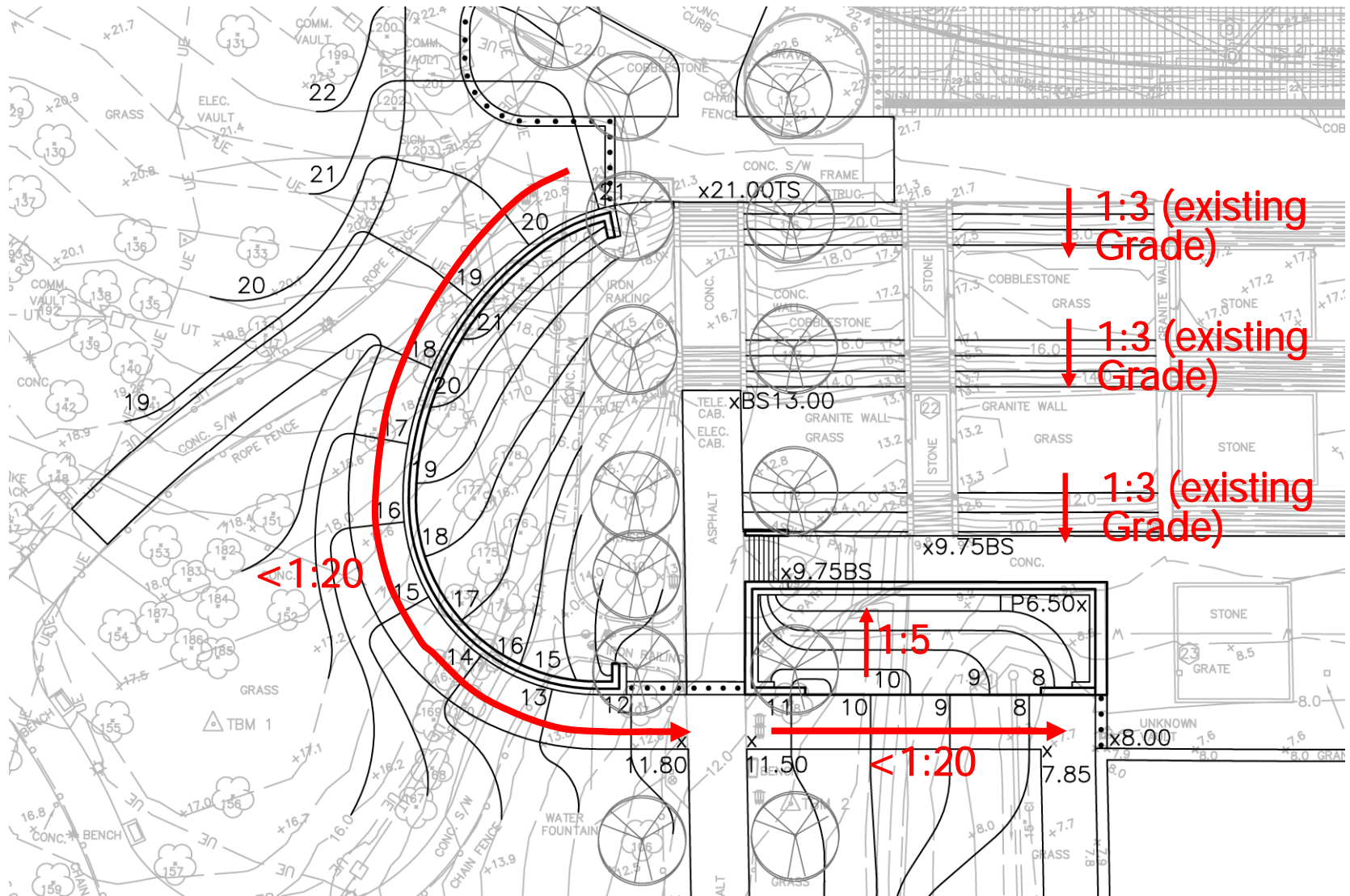




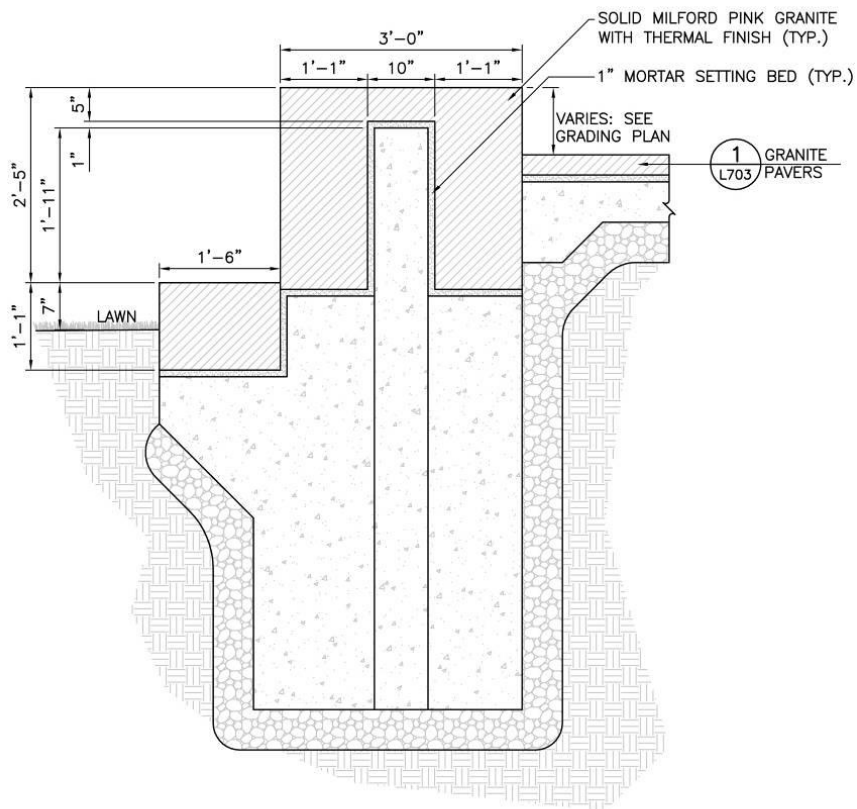
# Security Barrier & ADA Access



# Security Barrier & ADA Access Grade

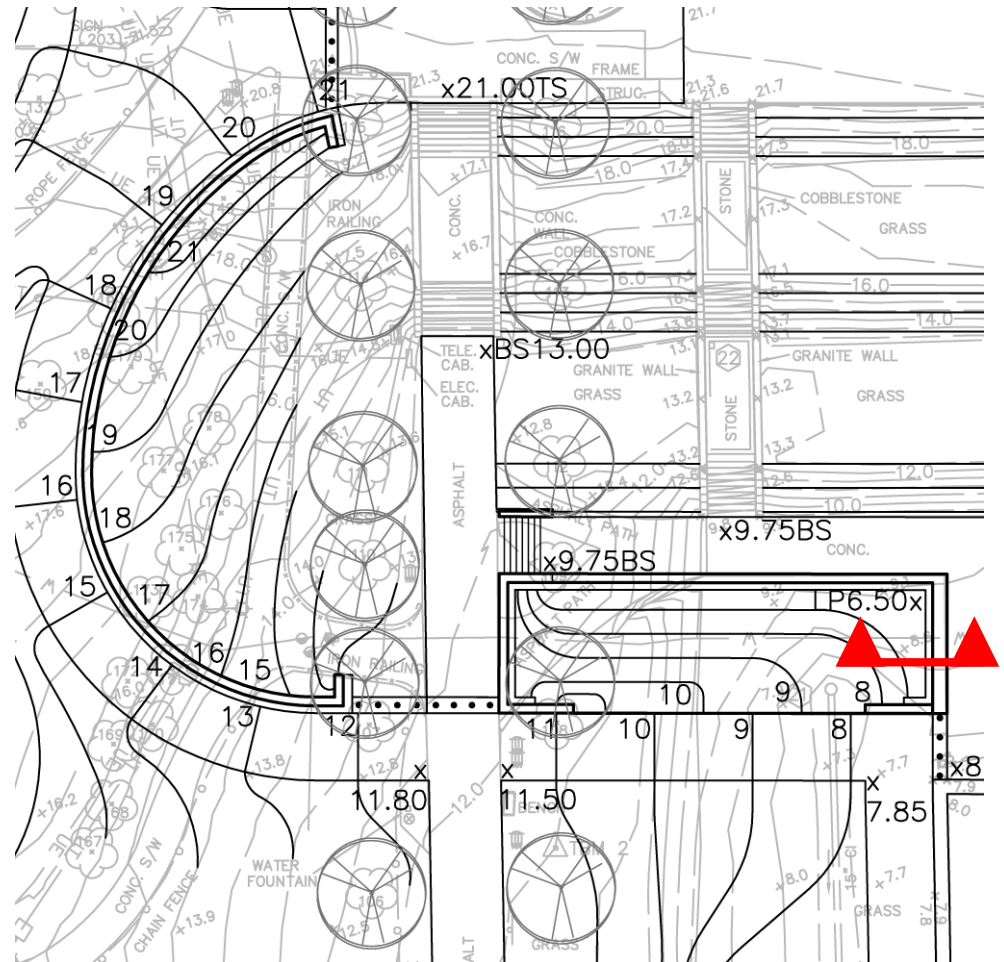




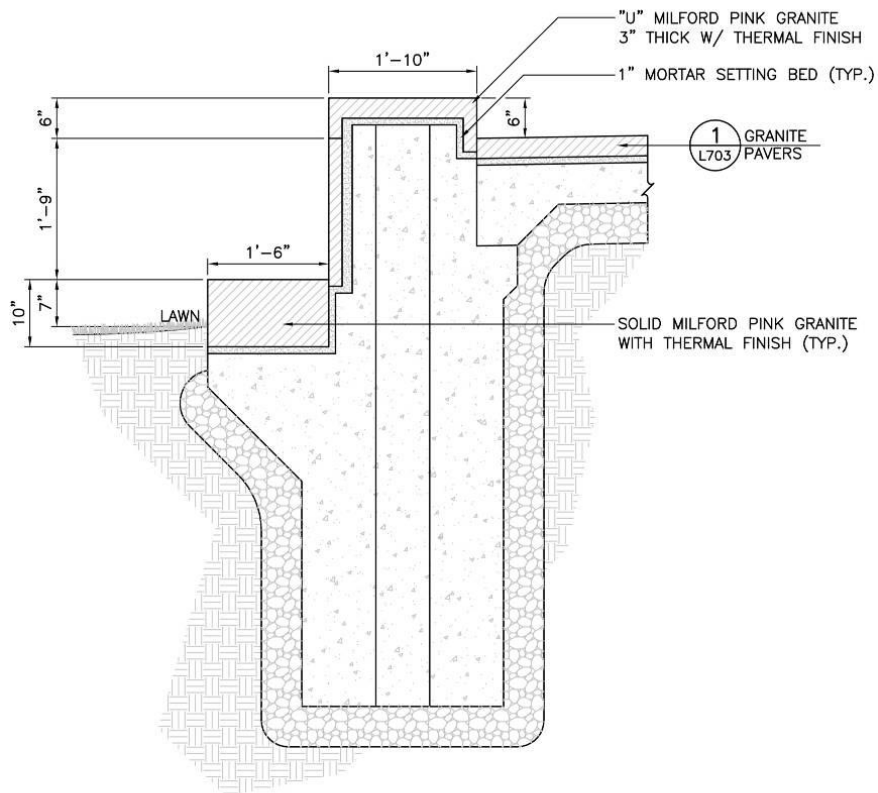


NOTE: SEE STRUCTURAL DRAWINGS FOR ALL FOUNDATIONS, FOOTINGS, AND STEEL REINFORCEMENT.

1 GRANITE BLOCK WALL DETAIL  
L701 1"=1'-0"

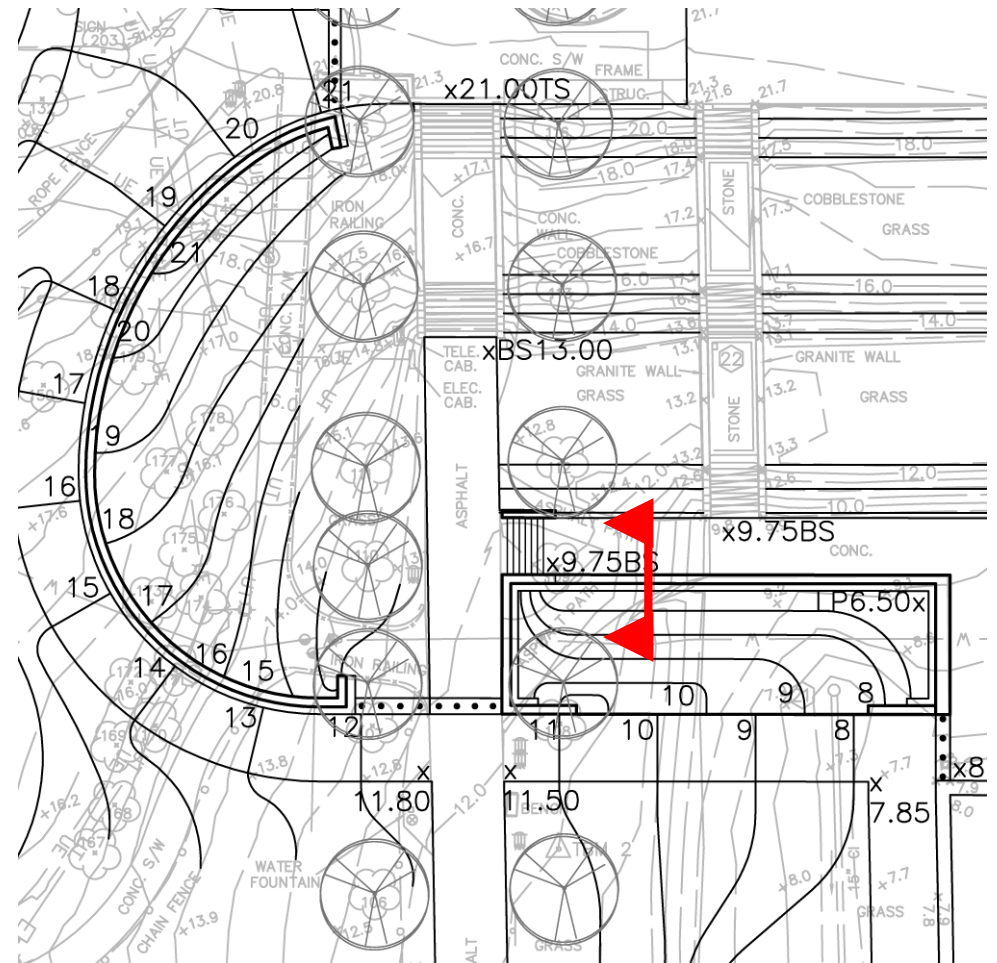


# Security Walls Wall Sections

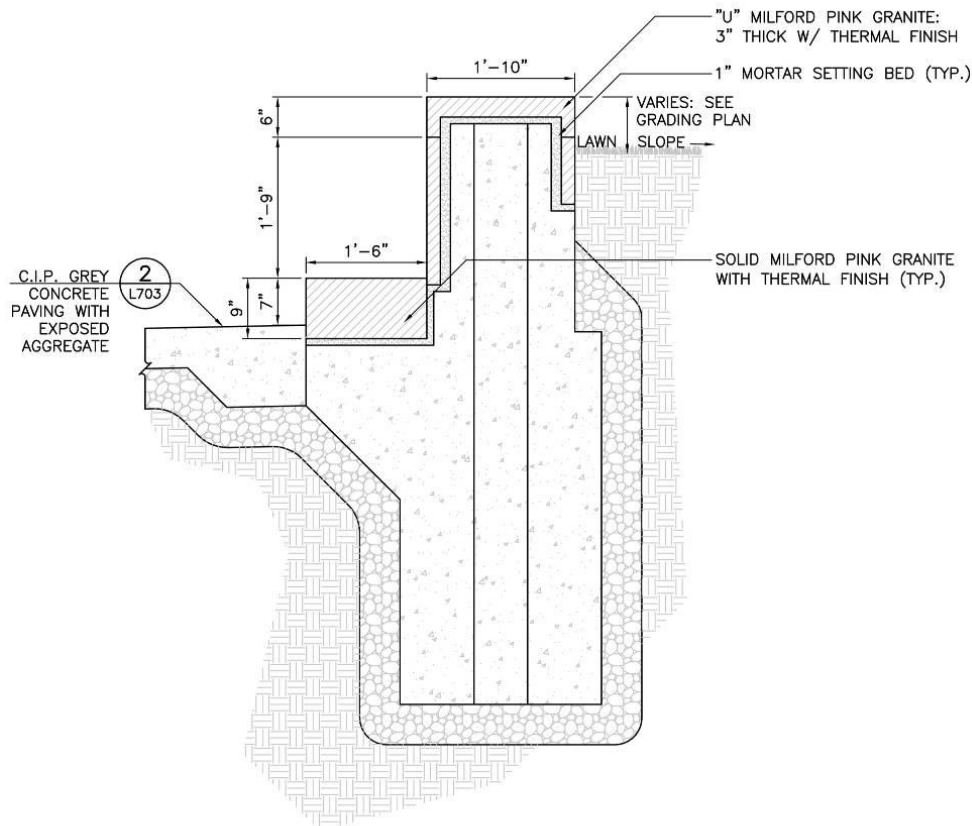


NOTE: SEE STRUCTURAL DRAWINGS FOR ALL FOUNDATIONS,  
FOOTINGS, AND STEEL REINFORCEMENT.

2 STRAIGHT GRANITE-CLAD WALL DETAIL  
L701 1"=1'-0"

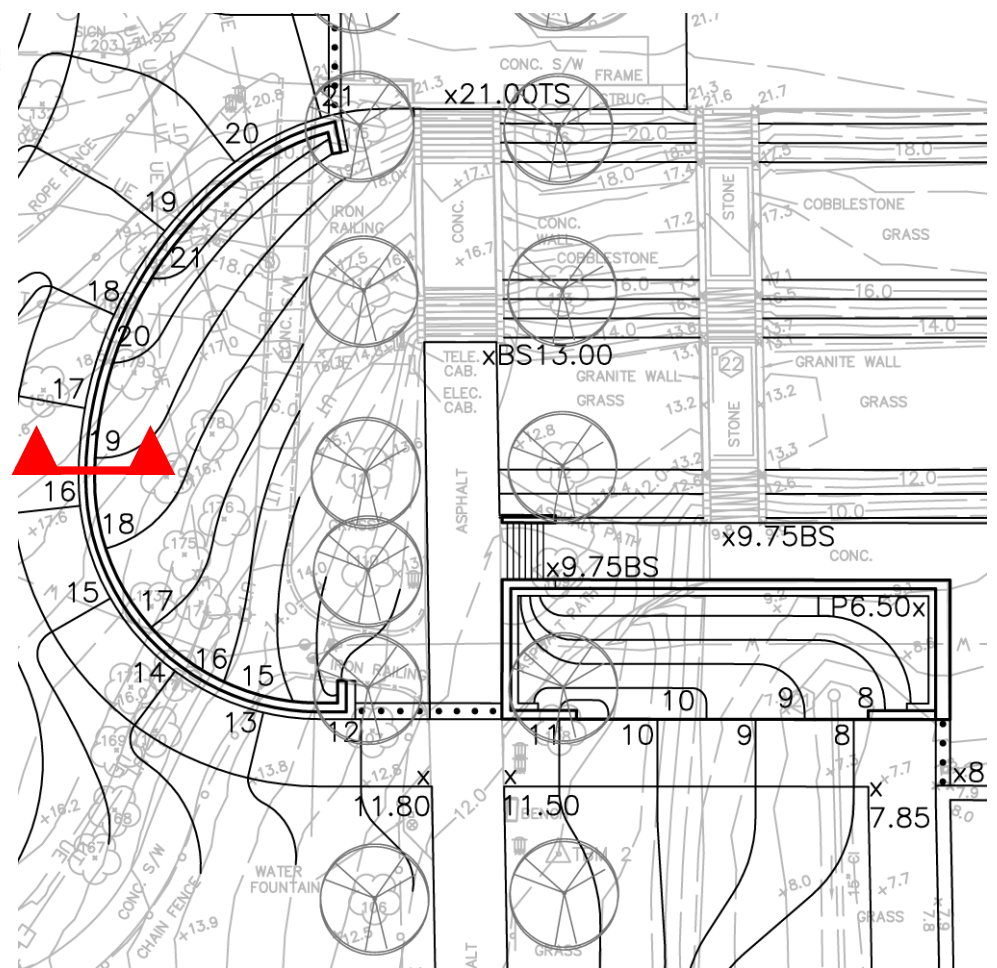




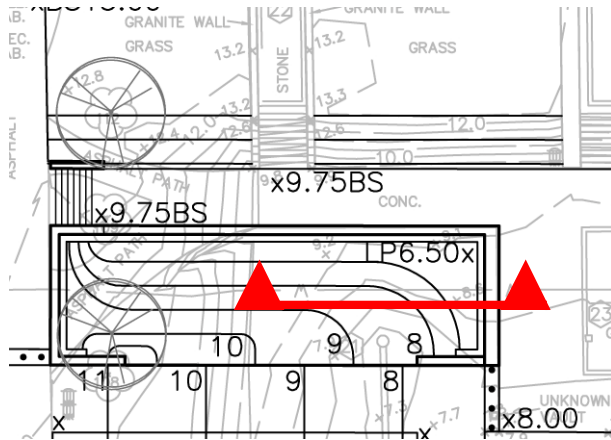


NOTE: SEE STRUCTURAL DRAWINGS FOR ALL FOUNDATIONS, FOOTINGS, AND STEEL REINFORCEMENT.

1 CURVED GRANITE-CLAD WALL DETAIL  
L702 1"=1'-0"



# Security Walls Illustrative Wall Section

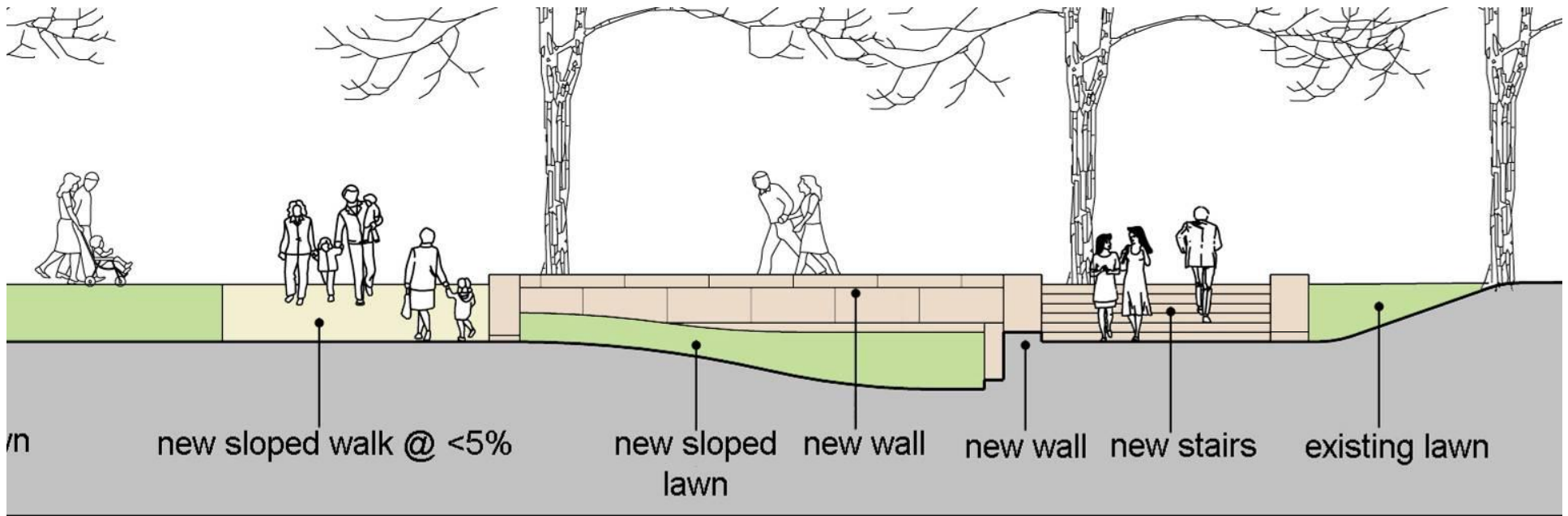
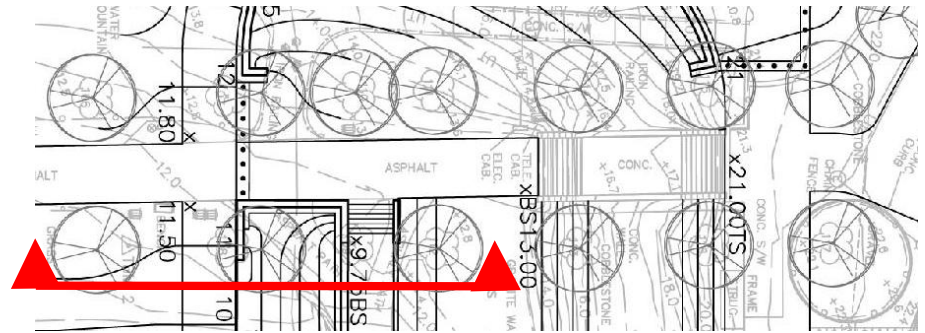


Existing walls at Lower Approachway  
Milford Pink Granite



# Security Walls

## Illustrative Wall Section





# Security Walls

Illustrative Rendering (Facing North)





# Security Walls Illustrative Rendering





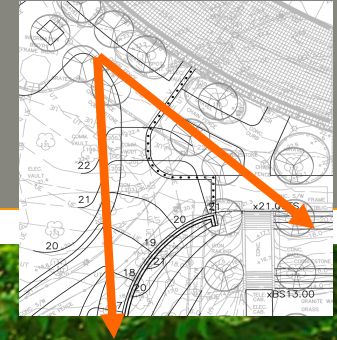
# Security Walls Illustrative Rendering







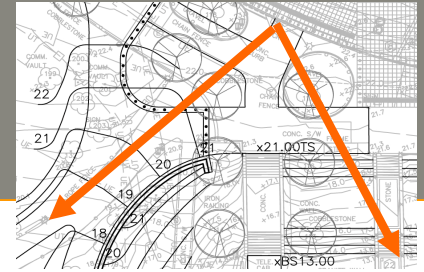
# Security Walls View 1



pip grey concrete  
with exposed aggregate

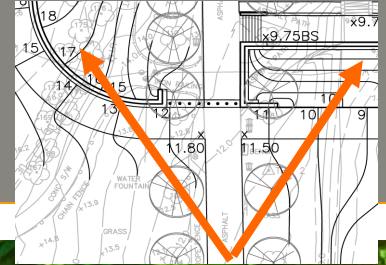


# Security Walls View 2



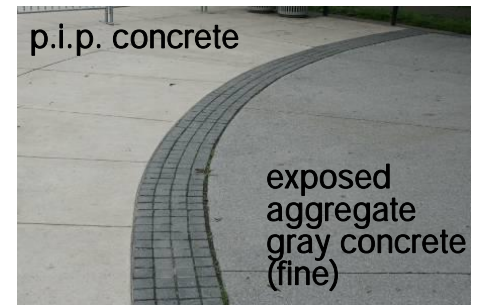
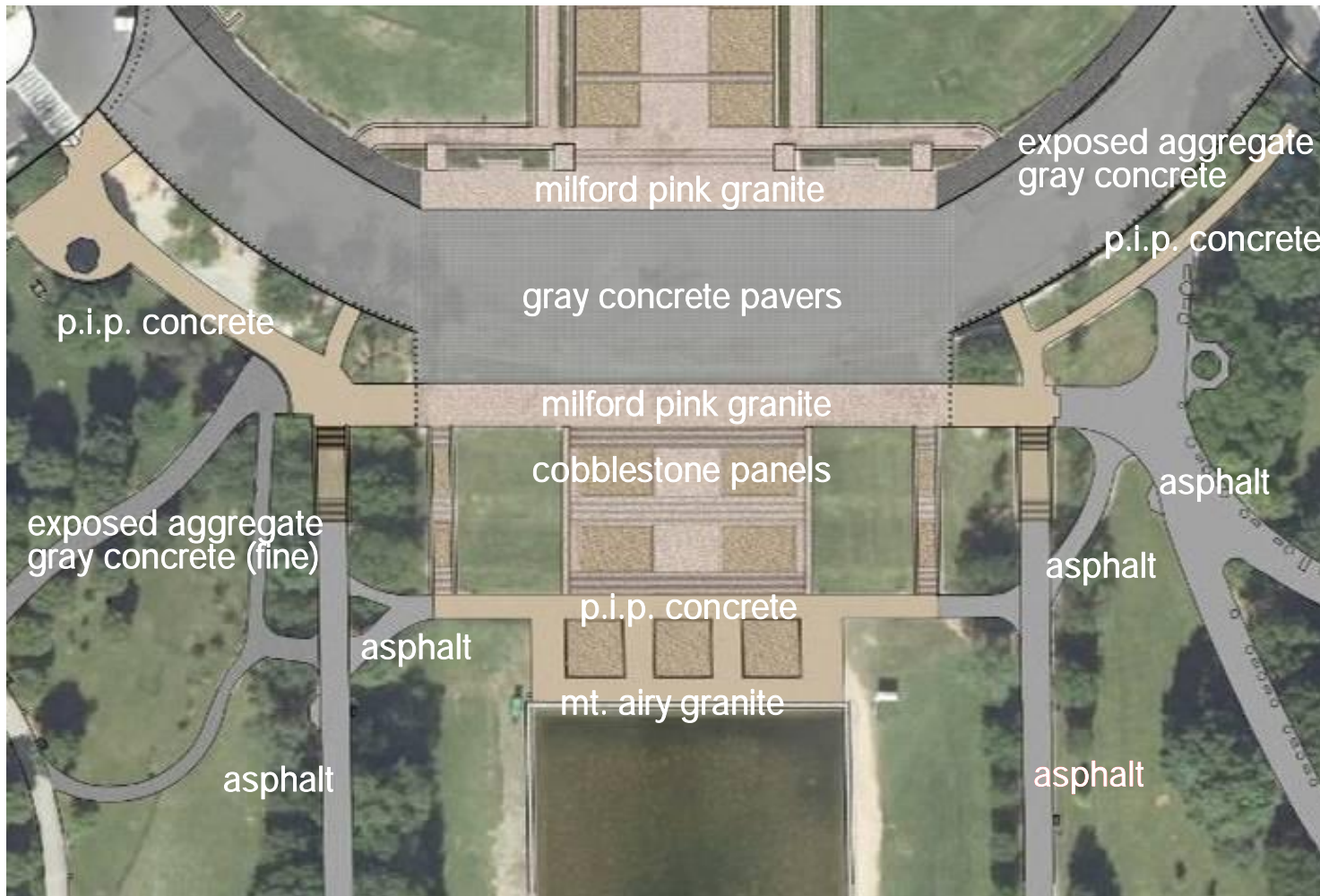


# Security Walls View 3





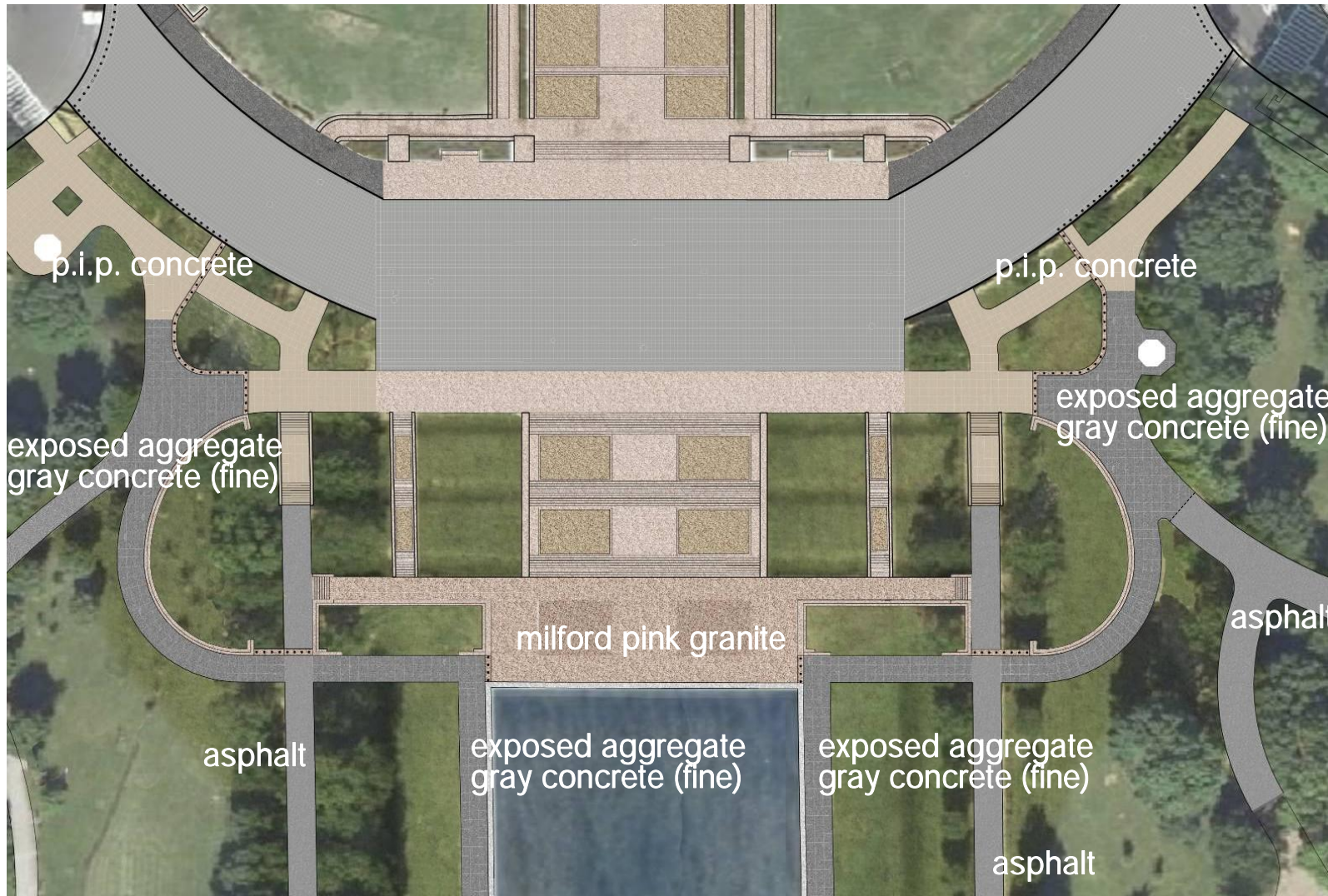
# Materials Existing Conditions





# Materials

## West Reflecting Pool Plaza and Walks - Paving Materials



West R. Pool Plaza:  
Milford Pink Granite

Pool Walks:  
Dark Gray Exposed  
Aggregate Concrete

Elm Walks:  
Asphalt with  
Granite Edge



# Materials

## West Reflecting Pool Plaza





# Final Design: Pool Walks

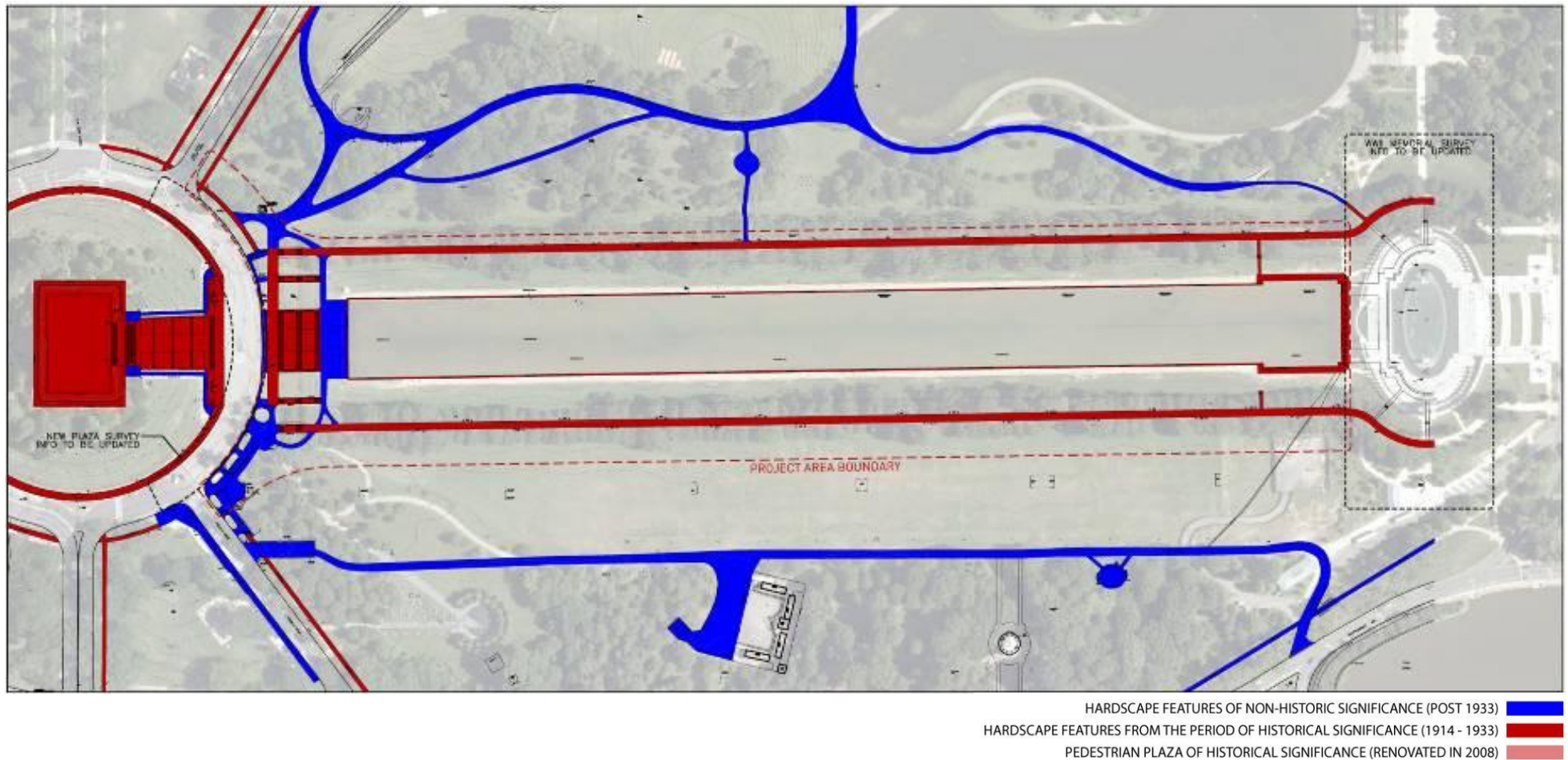
Illustrative Plan





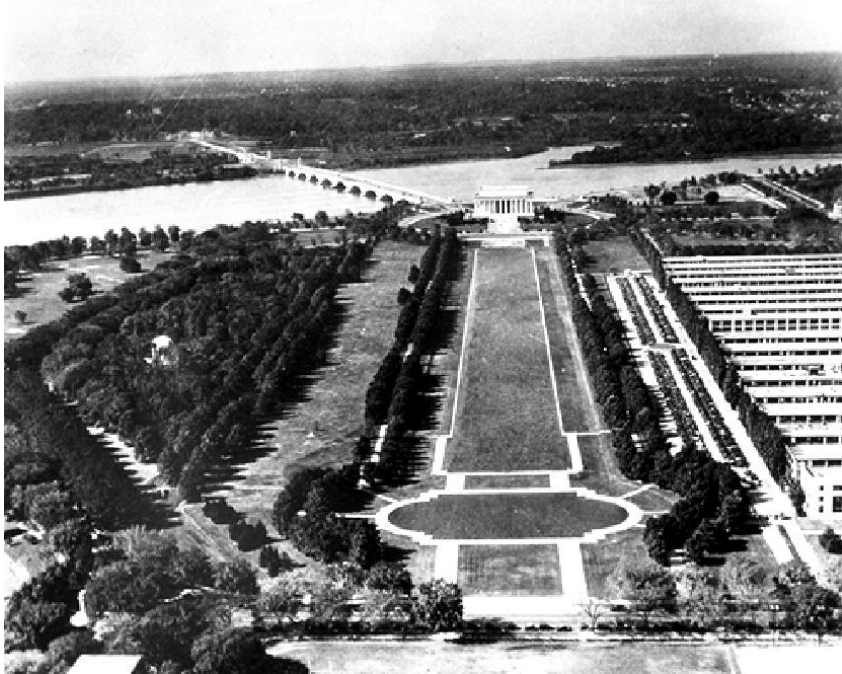
# Pool Walks

## Historical Significance



Historical Significance - Cultural Landscape Report (1999) Contributing Features

# Pool Walks Historical Significance



Historic Aerial View of Reflecting and Rainbow Pools

- Illustrates historic use of concrete walks adjoining coping of both pools



Historic Image of Rainbow Pool with Adjoining Concrete Walk

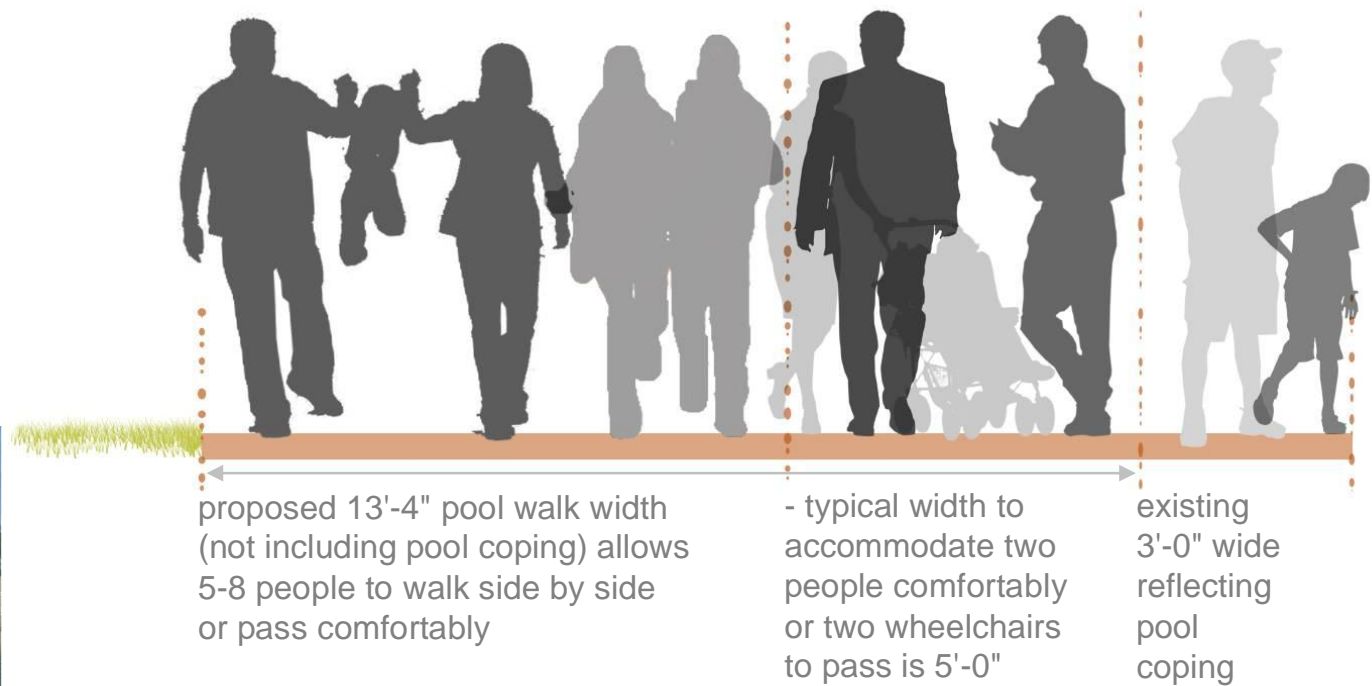


# Pool Walks

Existing Conditions with 15-16' Wide Social Trails - April 2009



# Pool Walks Existing Conditions - April 2009





# Pool Walks

Stone Dust Option



Stone dust

# Pool Walks

## Stone Dust Option – Maintenance & Appearance Issues



Cleveland Gateway Sports District  
– Stone dust was installed over soil zones of trees to allow pedestrian movement  
– Stone dust is successful at this site because use is only in warm seasons and principal pedestrian paths are paved walks  
– Originally designed by Sasaki in 1994



Charleston Waterfront Park  
Charleston, South Carolina  
– Stone dust is used successfully on primary walks because it's retained in path by curbs and walls and warm climate negates need for snow removal  
– Originally designed by Sasaki in 1982



Place Dauphine  
Paris, France  
– Stone dust used as expansive surface in plaza  
– Like Cleveland Gateway, principal paths are paved walks at perimeter

Stone dust



# Pool Walks

## Stone Dust Option – Maintenance & Appearance Issues

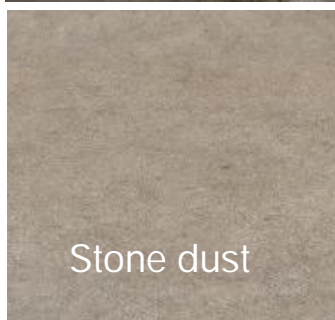
National Sculpture Garden uses granite paving for primary paths. Stone dust used for secondary pathways (photo from 2010-02-23)



Existing stone dust path at National Mall after recent snowfall, showing drainage issues and difficulty of snow removal (photo from 2010-02-26)



Smithsonian Enid A. Haupt Garden  
– Walks were designed by Sasaki in 1987 using proper stone dust construction techniques. Later changed to brick paving as recommended by accessibility advocates.



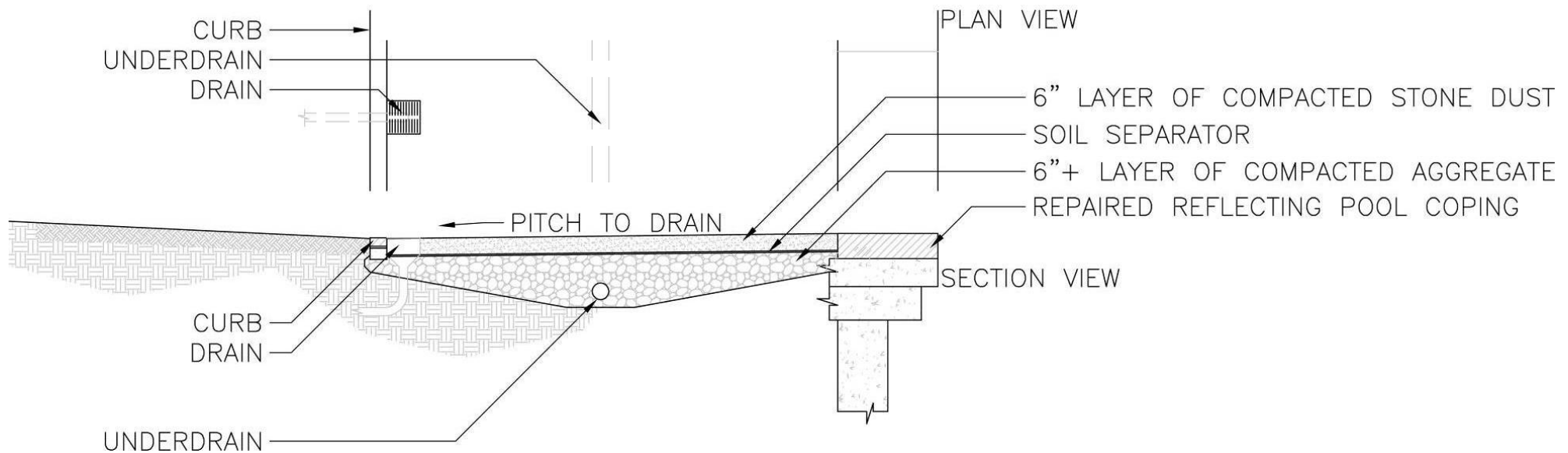
Stone dust



# Pool & Elm Walks

## Stone Dust Maintenance & Appearance Issues

- 1 – 4,000,000 visitors per year to Lincoln and WWII Memorials = heavy, consistent use.
- 2 – Concrete walk on piles is preferred.
- 3 – Cannot go back to install piles, if not completed now.
- 4 – Existing soil is wet and impermeable; must under-drain, will settle, may lose HC accessibility, and snow removal is difficult.
- 5 – Bicycles will cause ruts.
- 6 – Adjacent to water, stones will get kicked in.
- 7 – Adjacent to lawn, stones will get kicked in.
- 8 – Need curb to contain stone dust, potential trip-hazard.
- 9 – Curb requires drain inlets on walk.
- 10 – Elm walks are only vehicular access for police, fire, ambulance, and event vehicles. Pavement must allow access in all weather.

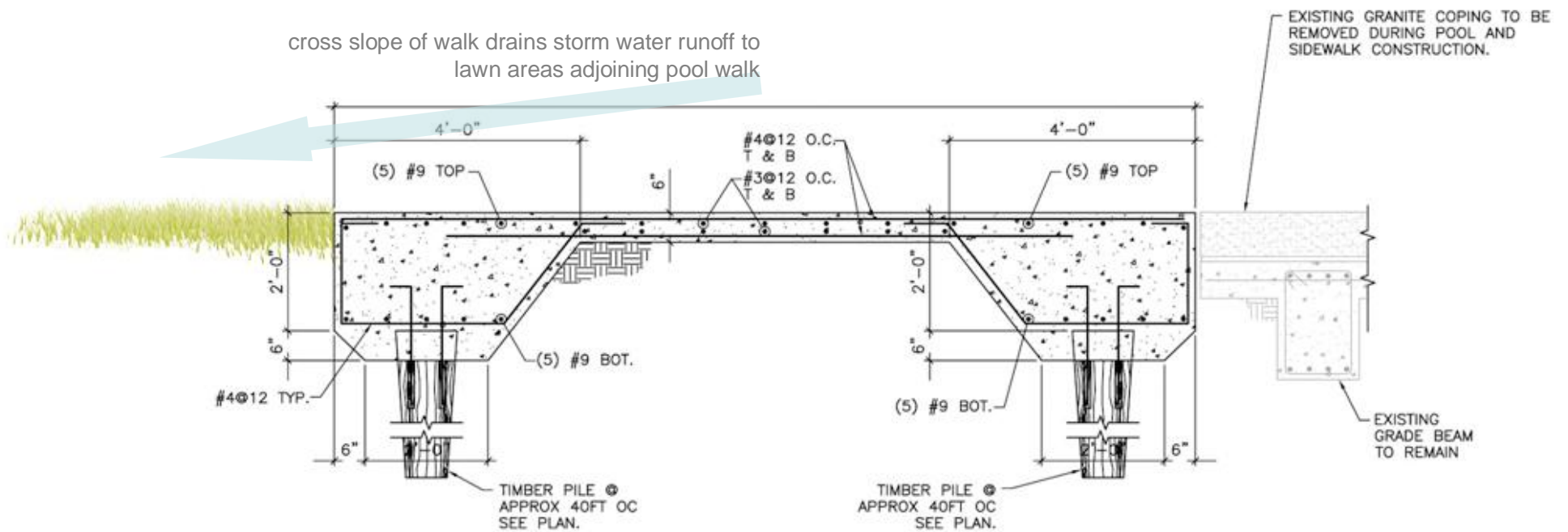


# Pool Walks Recommended Option





# Pool Walks Recommended Option



# Pool Walks

Existing Conditions Plan at East End





# Pool Walks Existing Conditions At East End



# Pool Walks

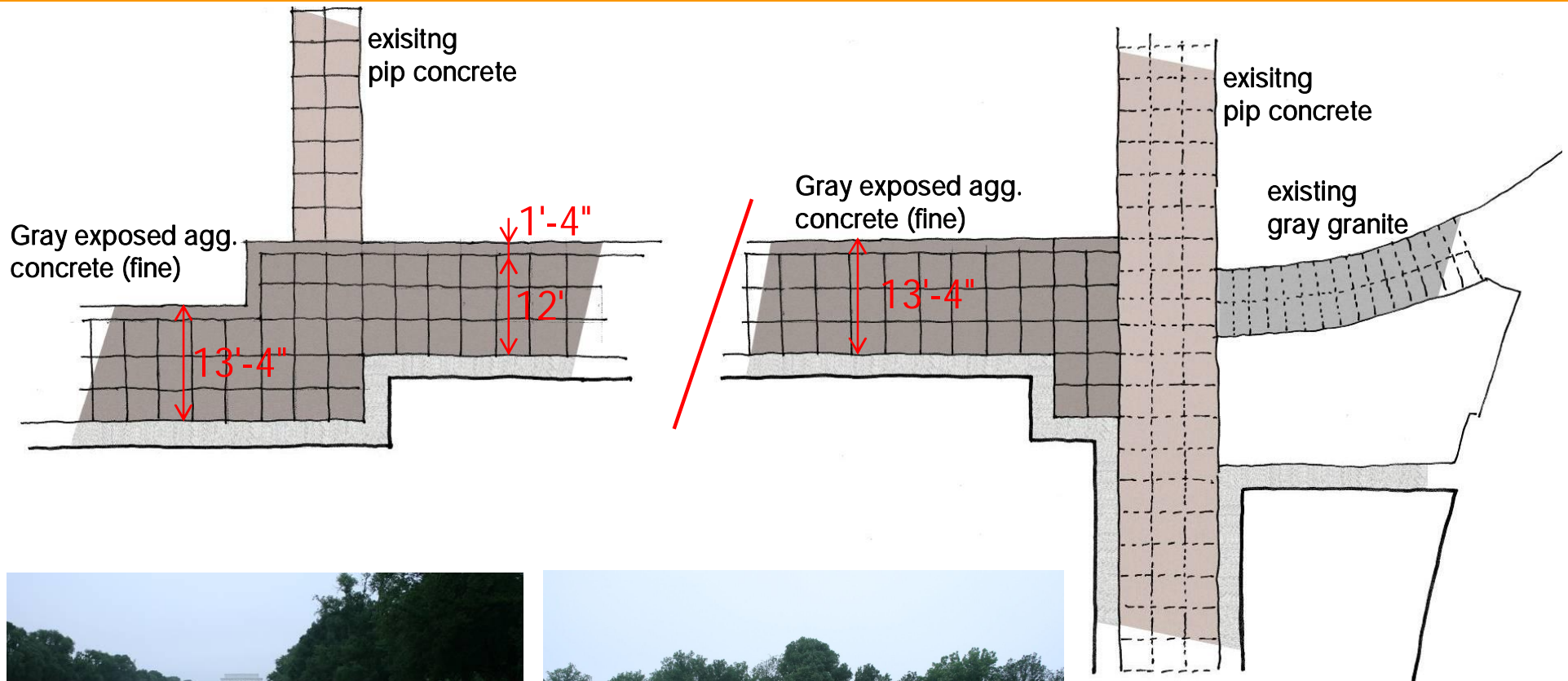
Recommended Option: Plan at East End



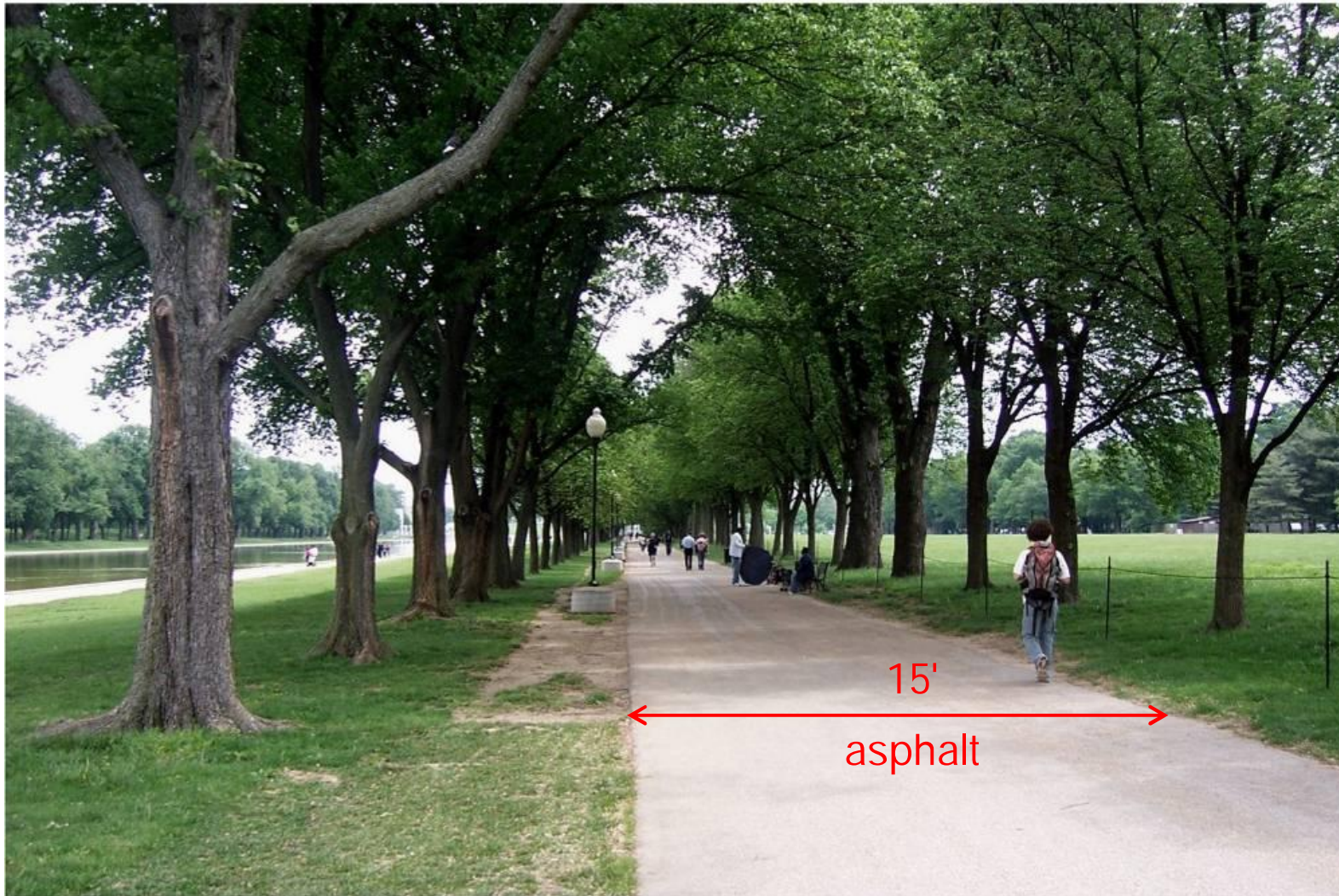


# Pool Walks

## Detail Plan Option 2



# Final Design: Elm Walks Existing Conditions





# Elm Walks

Surface Material - Concrete Option



15' P.I.P. Concrete Path  
(Historic Paving Pattern to  
Match Adjoining)

New Benches  
(to Match Existing and New  
Arrangement)



# Elm Walks

Surface Material – Asphalt – Recommended Option



15' Asphalt Walk

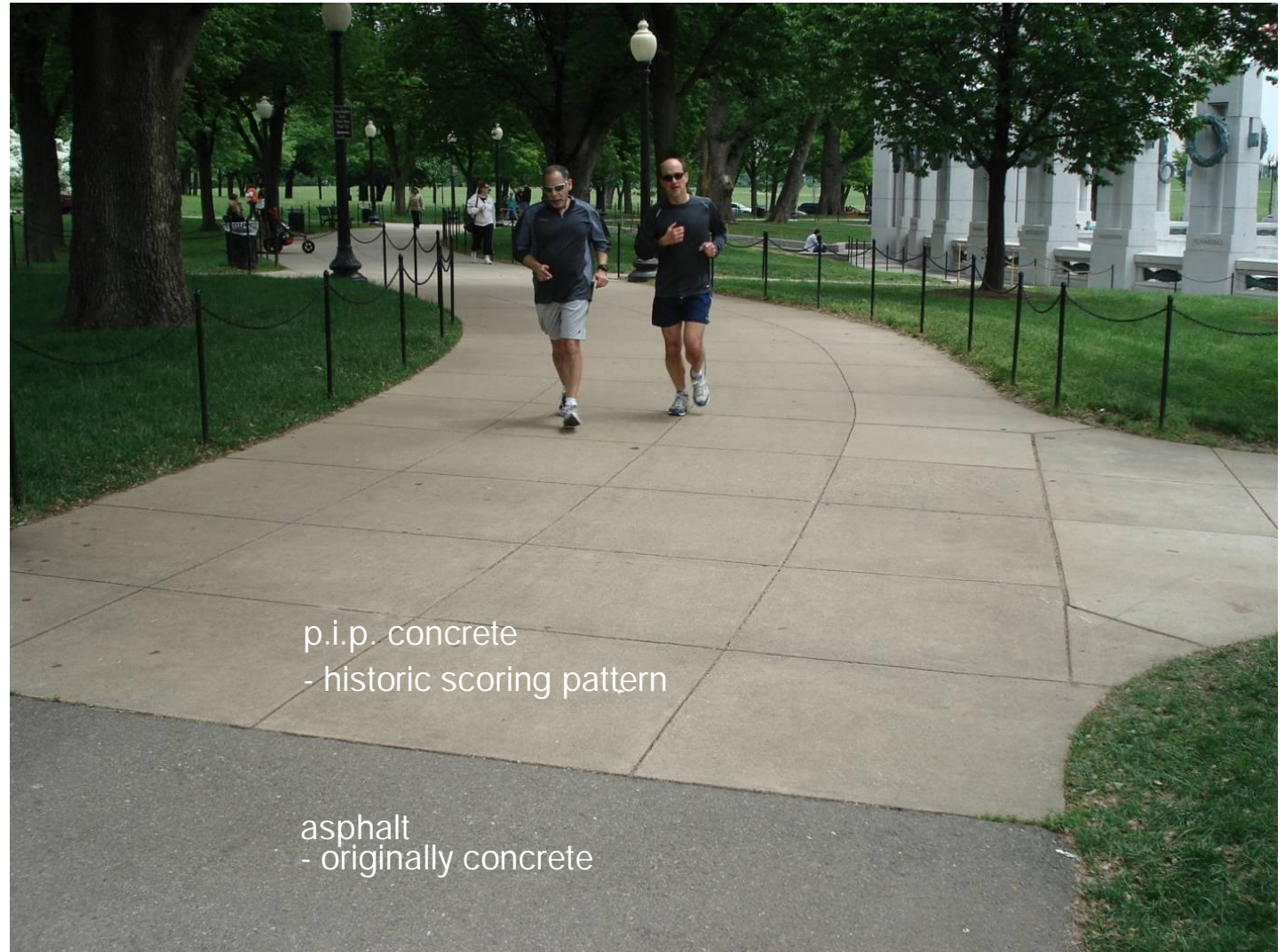
Flush 6" Granite Edging

New Benches  
(to Match Existing and New  
Arrangement)

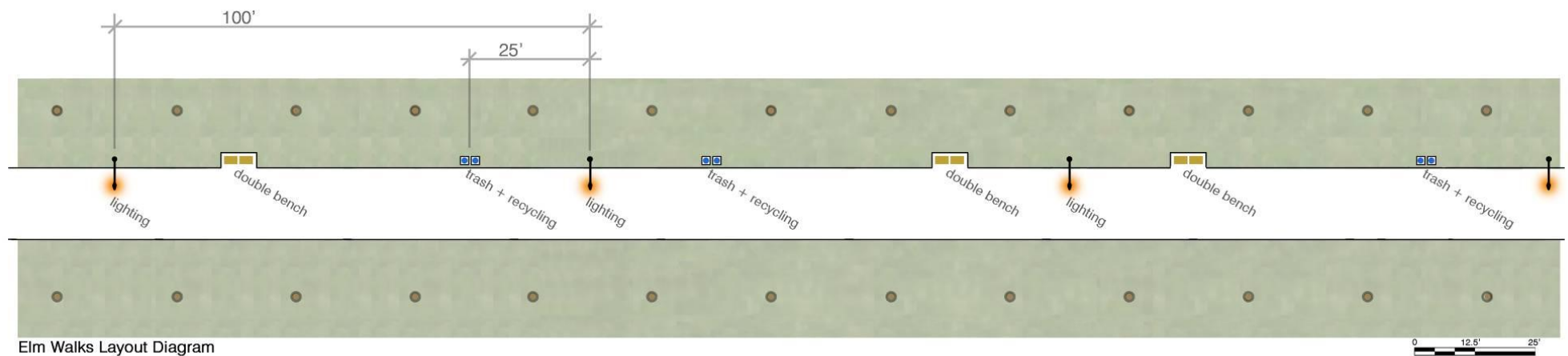


# Elm Walks Existing Conditions

Asphalt is the recommended option for the Elm Walks due to National Park Service positive experience with the material. Since the bicentennial, NPS has found asphalt easy to maintain and durable at this location. Asphalt is flexible pavement that responds well to both pedestrians and occasional vehicular traffic. Additionally, traditional material for park pathways and blends with the landscape better than concrete.



# Elm Walks Proposed Layout Diagram





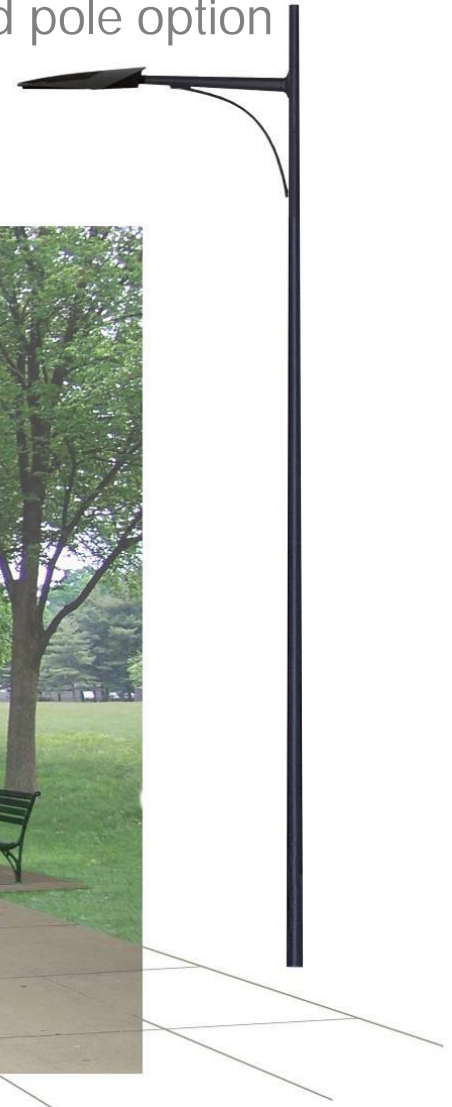
# Elm Walks

Lighting: Philips Lumec – LED – Dark Sky Compliant

original pole option

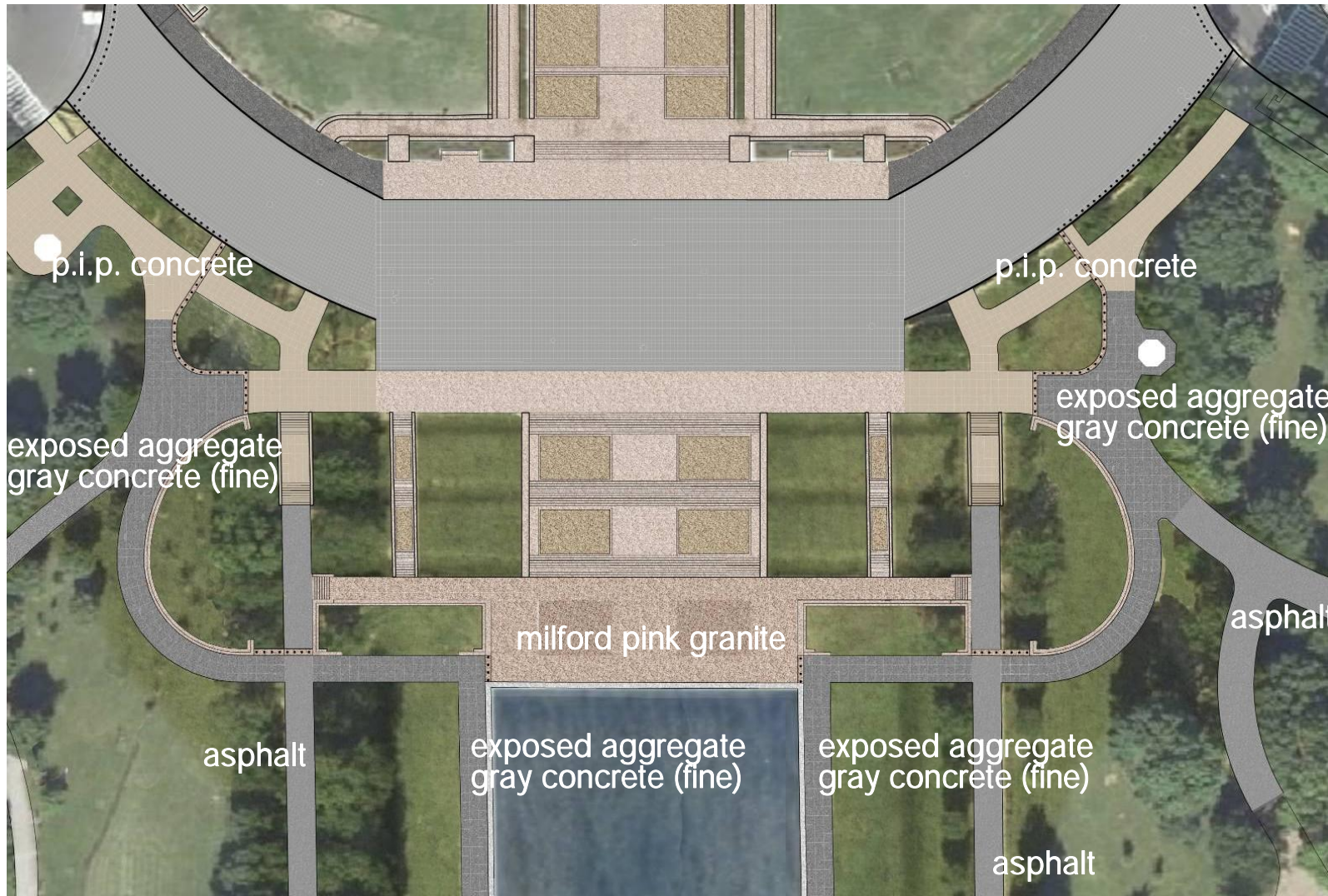


revised pole option





# Materials Preferred Option Summary



Security Walls:  
Milford Pink Granite

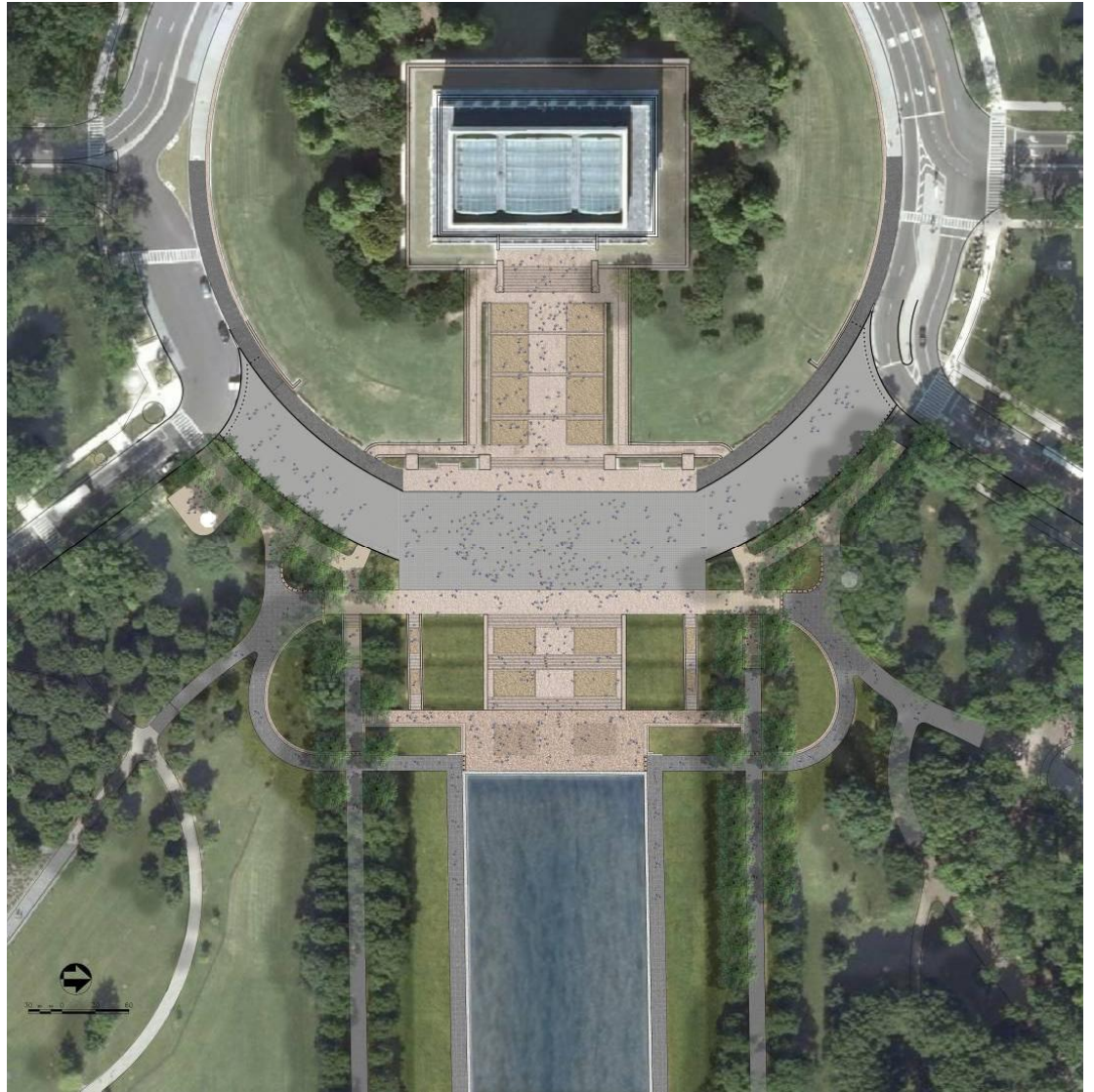
West R. Pool Plaza:  
Milford Pink Granite

Pool Walks:  
Dark Gray Exposed  
Aggregate Concrete

Elm Walks:  
Asphalt with  
Granite Edge

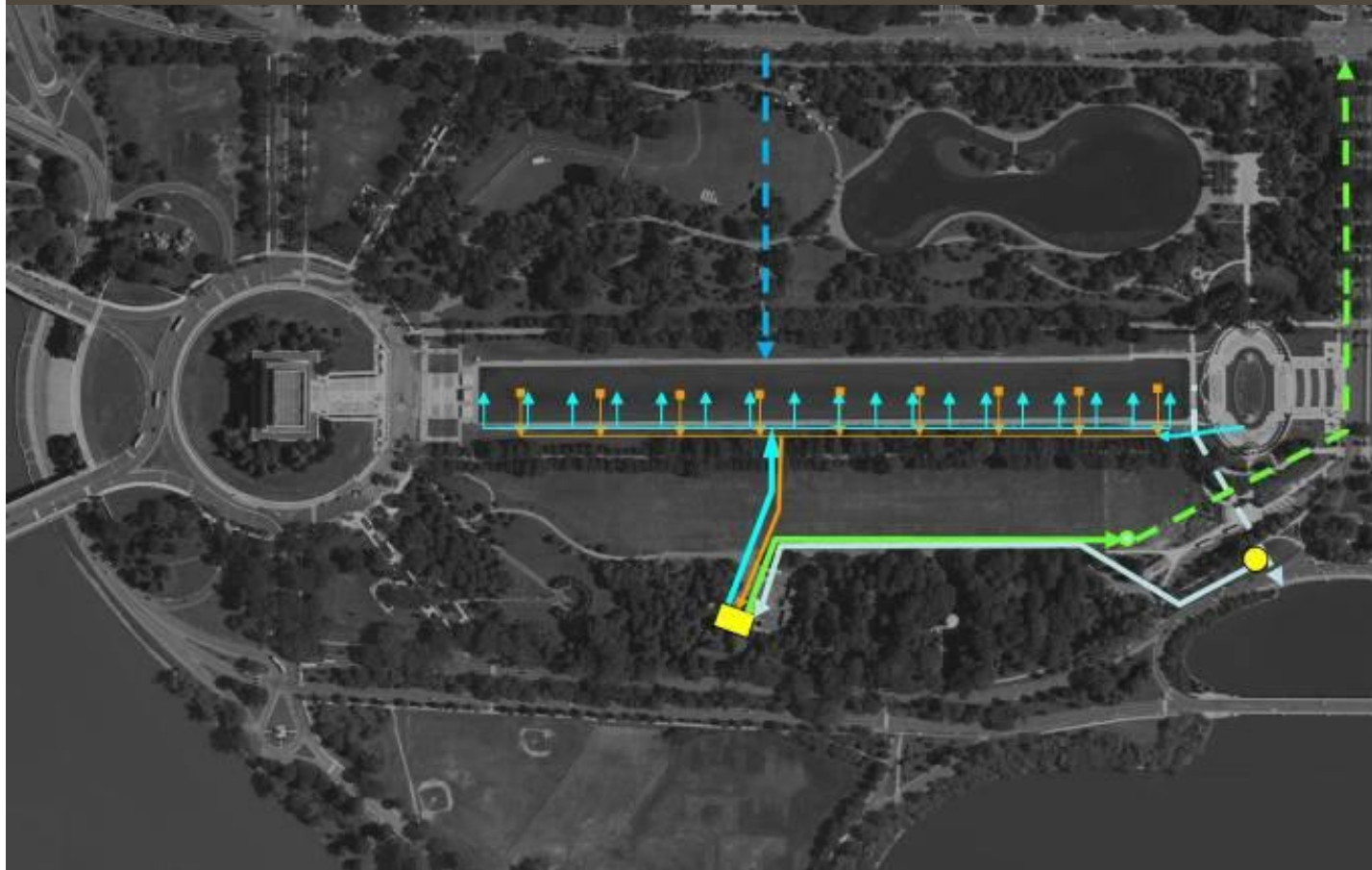


# Illustrative Plan Preferred Option



# Water System

## REVISED PREFERRED OPTION












### PHYSICAL PARAMETERS

- Tidal Basin Intake
- Municipal Supply for Supplemental/Back Up
- Treated Groundwater from WWII Memorial for Makeup
- Recirculation of pool water

### REQUIRED STRUCTURES

- 40x60' filtration structure
- Below ground pump house

- |  |   |
|--|---|
|  Water Supply (proposed)    |  Sanitary Sewer Discharge (existing)     |
|  Water Supply (existing)    |  Sanitary Sewer connection (proposed)    |
|  Tidal Intake (proposed)    |  Return Line (proposed)                  |
|  Tidal Discharge (existing) |  Water Supply pumping station (proposed) |
|  |  Water Treatment Structure (proposed)    |



# Water Treatment Structure proposed location



# Water Treatment Structure visual character

## USPP Maintenance Complex





# Water Treatment Structure visual character

## USPP Administrative Trailer



# Water Treatment Structure visual character

## USPP Stables





# Water Treatment Structure visualization





# Water Treatment Structure visualization

Existing





# Water Treatment Structure visualization

Proposed





# Water Treatment Structure visualization

Existing





# Water Treatment Structure visualization

Proposed



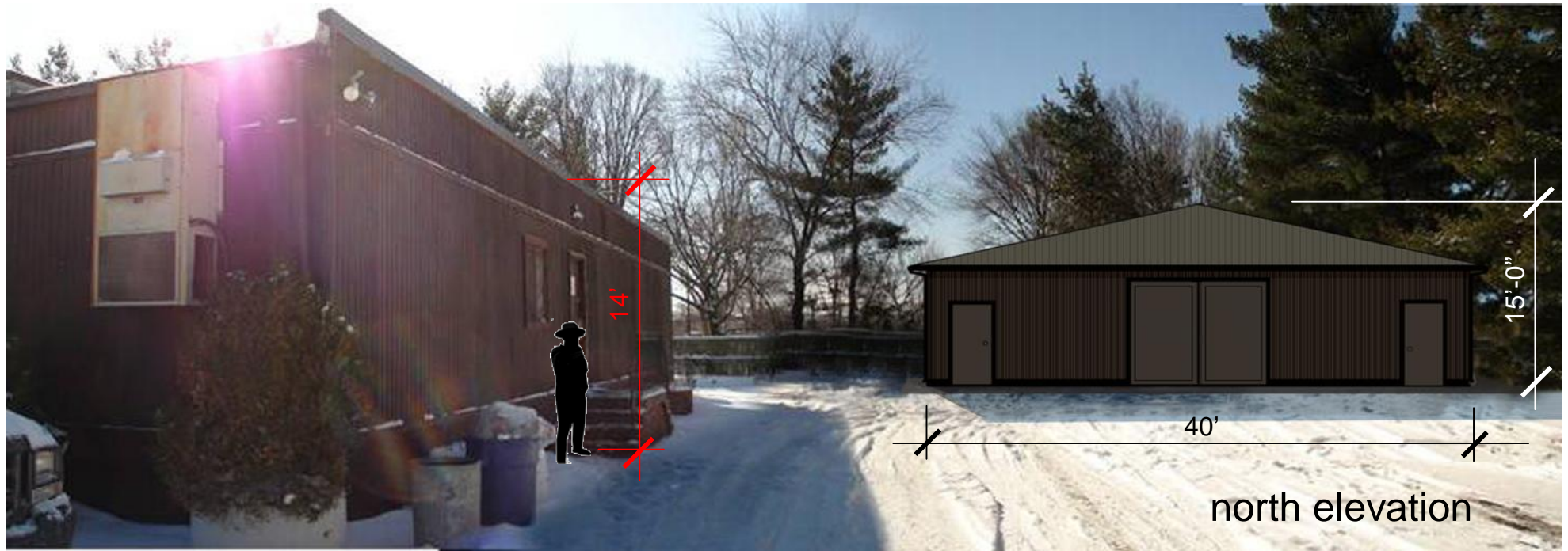


# Water Treatment Structure elevation





# Water Treatment Structure elevation







end