

Cape Lookout National Seashore Seabeach Amaranth  
(*Amaranthus pumilus*)

2009 Report



*Seabeach Amaranth plants building dunes on Shackleford Banks.*

NPS Photo 2009

*Prepared by:*  
*Jon Altman*  
NATIONAL PARK SERVICE  
CAPE LOOKOUT NATIONAL SEASHORE  
131 CHARLES STREET  
HARKERS ISLAND, NC 28531

## *Introduction*

Seabeach Amaranth is a federal and North Carolina listed threatened species. Regular monitoring of this annual plant species began at Cape Lookout in 1993. The plant is a pioneer species and is typically found in suitable habitat of overwash fans, sand flats, and low dunes of little to no competing vegetation. The south facing beaches of Shackleford Banks and from the Cape Point to Power Squadron Spit typically grow the majority of plants in the Seashore. While the higher erosion rated east facing beaches of the Core Banks produce fewer plants. Cape Lookout National Seashore extends 56 miles from Beaufort Inlet to Ocracoke Inlet and is presently comprised of three islands.

## *Methods*

Starting June 1<sup>st</sup> monitoring of habitat both inside and outside bird closures took place 1-2 days per week. Historical south facing beach habitats in particular were surveyed for small seedlings. Our annual survey began in late July to look for the larger plants during the peak of the growing season. Again we concentrated on the historical habitat, but also covered the majority of the seashore. Surveys were conducted on foot with single or multiple observers walking through appropriate sand flats, high beaches, and low dunes. Some longer stretches of the Core Banks and Shackleford Banks were surveyed by ATV at a slow pace to examine the high beach and foredunes. The survey date, beach miles, number of plants, GPS locations of plants, and survey hours were recorded on data sheets.

## *Results*

Park Staff counted 101 Seabeach Amaranth plants in 2009 (Table 1). The annual survey began on July 16<sup>th</sup> and continued through September 6<sup>th</sup>. A total of 56 miles were surveyed. A total of 38.5 survey hours were exhausted looking for the plants. The first plants were recorded on July 31<sup>st</sup> and the last plant was discovered on August 14<sup>th</sup>. No plants were found on sites/parts of beach open to Off-Road Vehicles (ORVs). Shackleford Banks (SB) produced 100 plants. All of the nine miles from Beaufort Inlet to Barden Inlet were surveyed by foot and ATV during four survey hours. One plant was discovered on South Core Banks (SCB) at Power Squadron Spit. All of the 24 miles from Barden Inlet to Ophelia Inlet of SCB were surveyed by foot or ATV during 17.5 survey hours. No plants were found on North Core Banks (NCB) from Ophelia Inlet to Ocracoke Inlet during 17 survey hours of the 23 miles of island. Surveys were conducted both by foot and ATV on NCB.

Table 1. 2009 Annual Seabeach Amaranth Survey Results.

<b>Date</b>	<b>Island</b>	<b>Mile</b>	<b>Latitude</b>	<b>Longitude</b>	<b>Plant #s</b>
7/31/2009	SB	56	34.68816	-76.66526	11
7/31/2009	SB	56	34.68874	-76.66461	1
7/31/2009	SB	56	34.68837	-76.66504	8
7/31/2009	SB	56	34.68758	-76.665	1
7/31/2009	SB	56	34.68725	-76.66433	2
7/31/2009	SB	50.94	34.66377	-76.58508	1
7/31/2009	SB	49.65	34.65576	-76.56455	4
7/31/2009	SB	49.55	34.65493	-76.56274	2
7/31/2009	SB	49.5	34.65453	-76.56205	2
7/31/2009	SB	48.06	34.64085	-76.54314	7
7/31/2009	SB	48.08	34.64109	-76.54331	30
7/31/2009	SB	48.1	34.64133	-76.54349	13
7/31/2009	SB	48.22	34.64271	-76.54462	2
7/31/2009	SB	48.24	34.64305	-76.54491	12
7/31/2009	SB	48.28	34.64348	-76.54534	2
7/31/2009	SB	48.42	34.64499	-76.54695	1
8/8/2009	SCB	47.18	34.6293	-76.55463	1
8/14/2009	SB	53.49	34.67558	-76.62919	1
<b>Total</b>					101

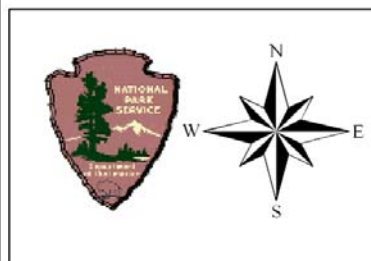
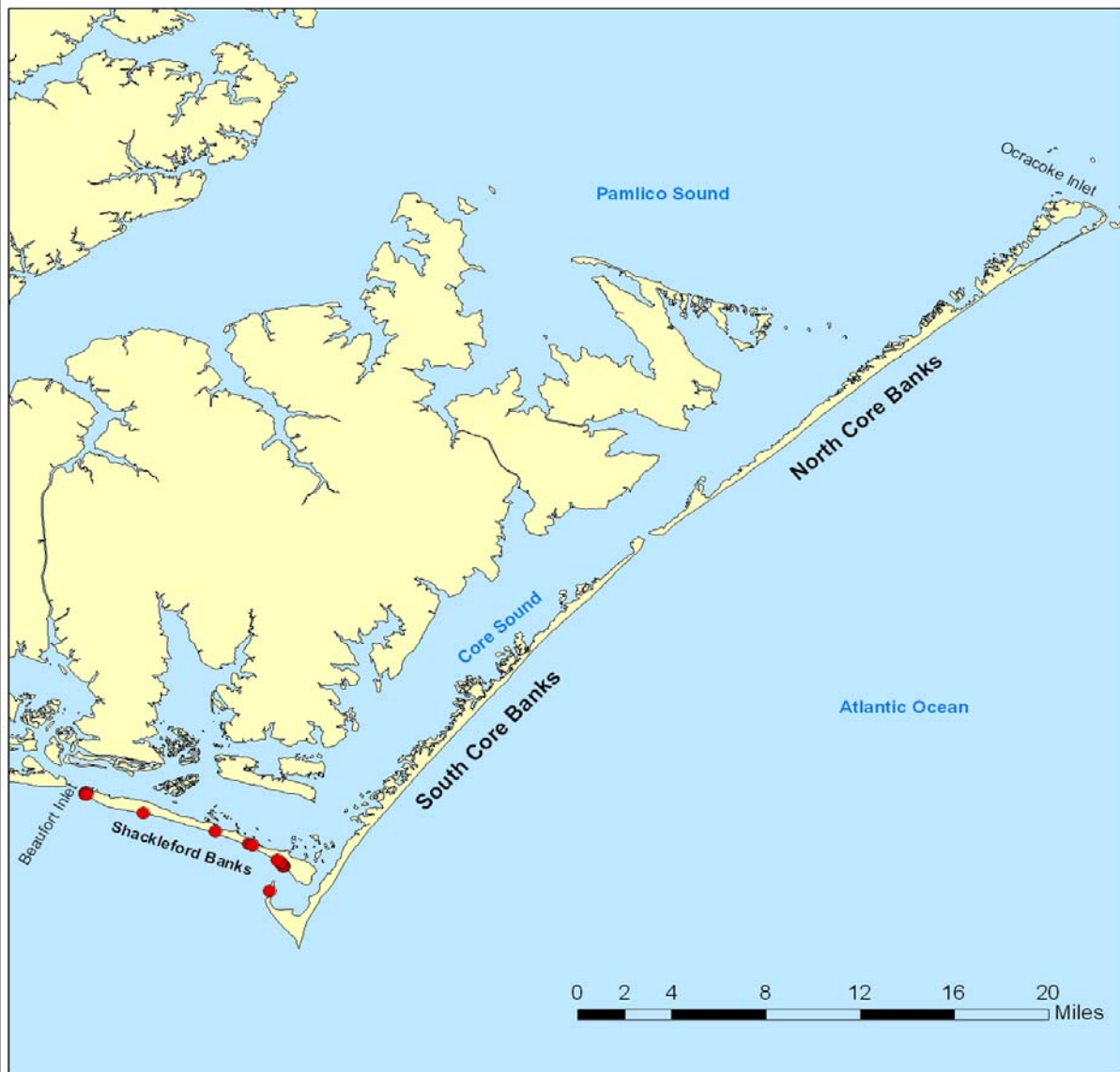
## *Discussion*

The 2009 annual survey was successful in finding plants on the south facing ocean beach habitat of Shackleford Banks. Plants were clustered at Beaufort Inlet spit on the west end and on the east end near Barden Inlet. Only one plant was found on SCB at Power Squadron Spit. No plants have been recorded on NCB since 2005 and no large numbers since 1998 (Table 2). NCB appears to be the least productive island for Seabeach Amaranth. Although no plants were found before the intensive annual survey in late July, monitoring for seedlings should continue to start June 1. This is easily incorporated into bird monitoring efforts. Figure 1. illustrates the geographic distribution of Seabeach Amaranth in 2009. Some webworm predation was observed in 2009.

Table 2. Annual Counts of Seabeach Amaranth, 1993-2009.

Year	North Core Banks	South Core Banks	Shackleford Banks	Total
1993	82	1208	975	2265
1994	63	641	948	1652
1995	30	45	1155	1230
1996	1	0	3	4
1997	2	0	51	53
1998	121	4	369	494
1999	2	0	9	11
2000	0	4	13	17
2001	8	43	126	177
2002	2	69	261	332
2003	1	205	1354	1560
2004	1	78	58	137
2005	0	284	671	955
2006	0	33	30	63
2007	0	2	125	127
2008	0	0	76	76
2009	0	1	100	101

**Figure 1. Cape Lookout National Seashore-Seabeach Amaranth 2009**



National Park Service  
Cape Lookout National Seashore  
Resource Management Division

**Legend**

- Sea Beach Amaranth Plants
- NCMD\_GEO

