



Environmental Assessment & Section 106 for the
Lincoln Memorial Reflecting Pool Rehabilitation
Public Scoping Meeting



Agenda

1.

5:30pm – 6:00pm

OPEN HOUSE

2.

6:00pm – 6:30pm

PRESENTATION

3.

6:30 pm – 8:00pm

QUESTION & ANSWER
OPEN HOUSE

Project Background

NEPA & Section 106 Process

Design Alternatives

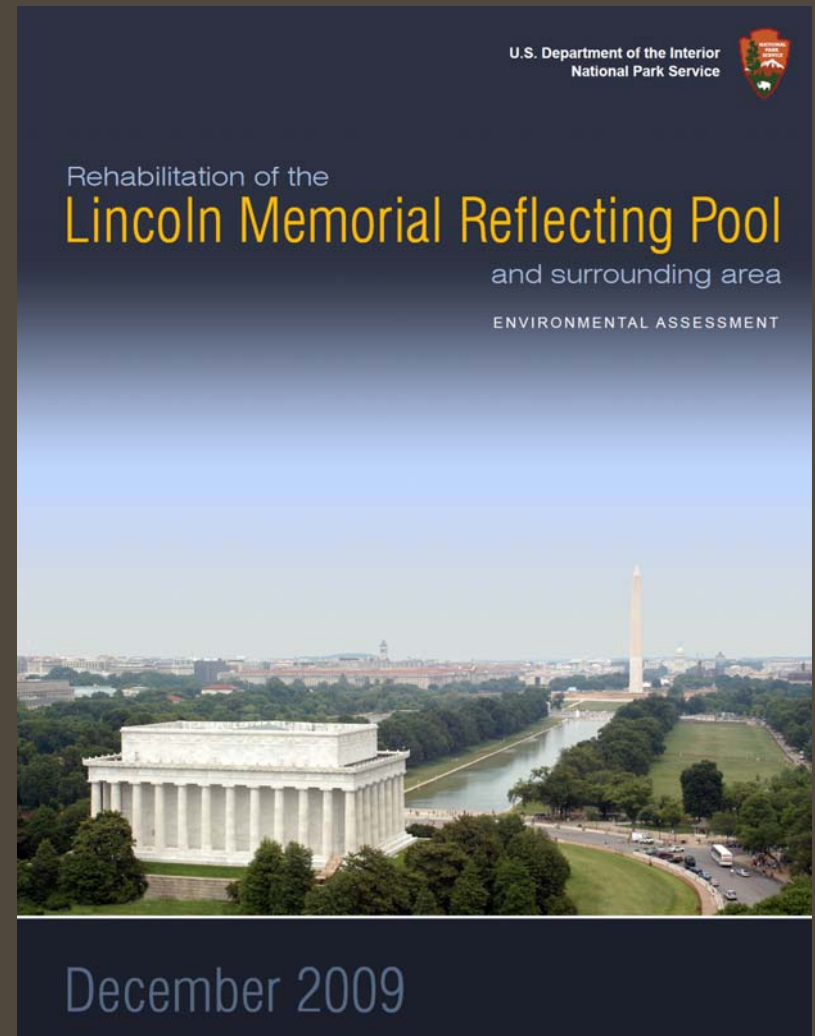
Opportunities to Comment



Environmental Assessment

Process

1. Notice of Intent
2. Define Purpose & Need
3. Data Collection
4. Define Preliminary Alternatives
5. Scoping to introduce project and identify issues
6. Public Scoping meeting to introduce alternatives
7. Finalize Alternatives
8. Affected Environment
9. Environmental Consequences
10. Public Review of Environmental Assessment
11. 30 day Comment Period (12/23/09- 01/29/10)
12. Decision Document



Project Timeline

2009

2010

2011

JAN

MAR

JUN

SEP

JAN

MAR

JUN

SEP

JAN

MAR

SCHEMATIC DESIGN

FINAL DESIGN

CFA / NCPC APPROVAL PROCESS

EA + SECTION 106

CONSTRUCTION



THE Louis Berger Group, INC.



Project Background



THE Louis Berger Group, INC.



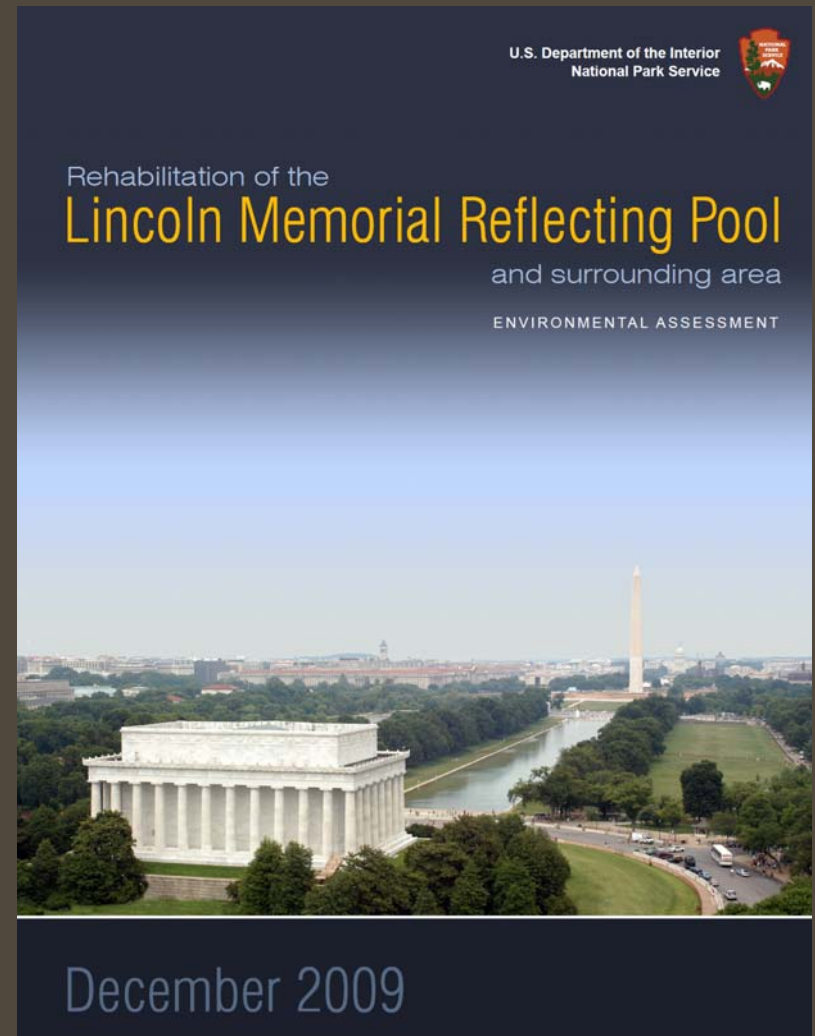
Purpose and Need



Section 106

Process

1. Define Undertaking/ Initiate Sec 106
2. Identify Consulting Parties
3. Plan to Involve the Public
4. Define Area of Potential Effect (APE)
5. Identify Significant Cultural Resources in APE
6. Assess Effects on Significant Resources
7. Apply Criteria Of Adverse Effect
8. Continue Consultation
9. Draft Agreement Document, if needed



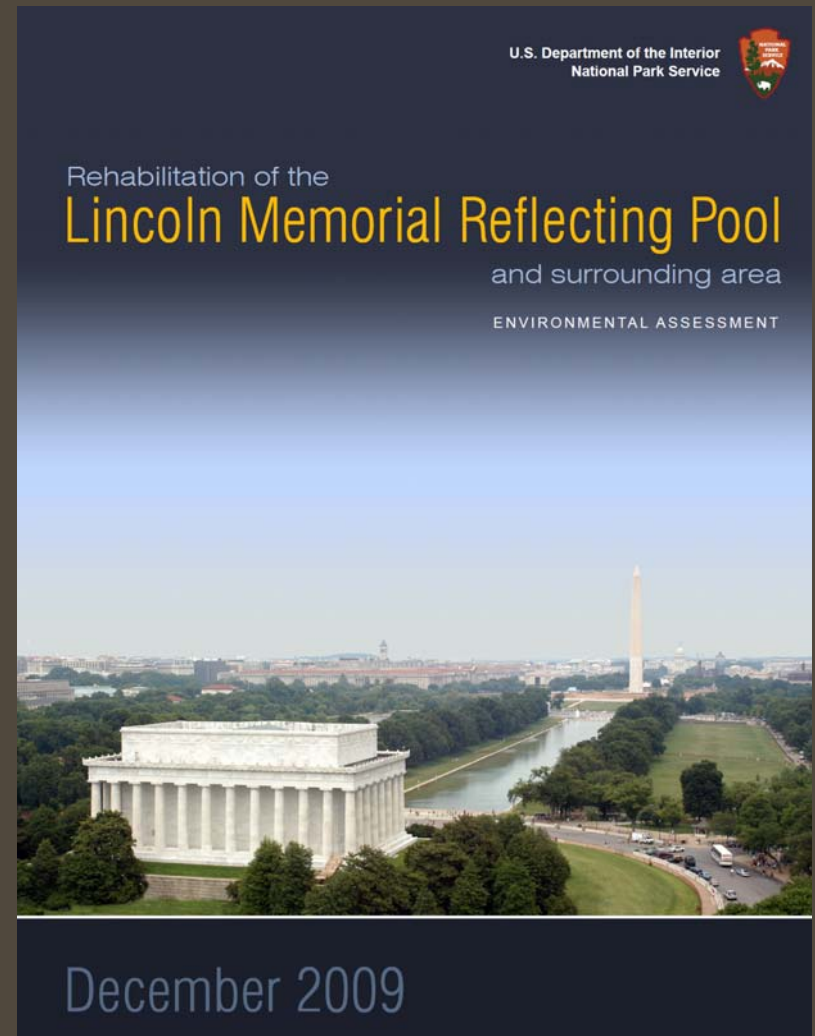
Section 106

The basic potentially affected cultural resources are historic districts, monuments, and - most notably - the documented cultural landscapes:

- Lincoln Memorial Grounds
- Constitution Gardens
- Washington Monument and Grounds
- D.C. War Memorial
- National Mall
- Thomas Jefferson Memorial Grounds

For Section 106 purposes, the NPS will utilize this Consulting Parties Meeting to determine if the project will have “no adverse effect” upon historic properties or if there remains significant anticipated or potential adverse effect.

The former, if accepted by the DC HPO, and not objected to by the ACHP, will conclude the Section 106 Process. The latter will require the NPS to negotiate an Agreement document under the 106 regulations to avoid, minimize, or mitigate adverse effects.



Design Alternatives



1. Pedestrian Circulation Improvements
2. Reflecting Pool Structural Rehabilitation
3. Reflecting Pool Water System Upgrades



Design Alternatives



1. Pedestrian Circulation Improvements



THE Louis Berger Group, INC.



Design Alternatives

Worn Dirt Paths



Elm Walks

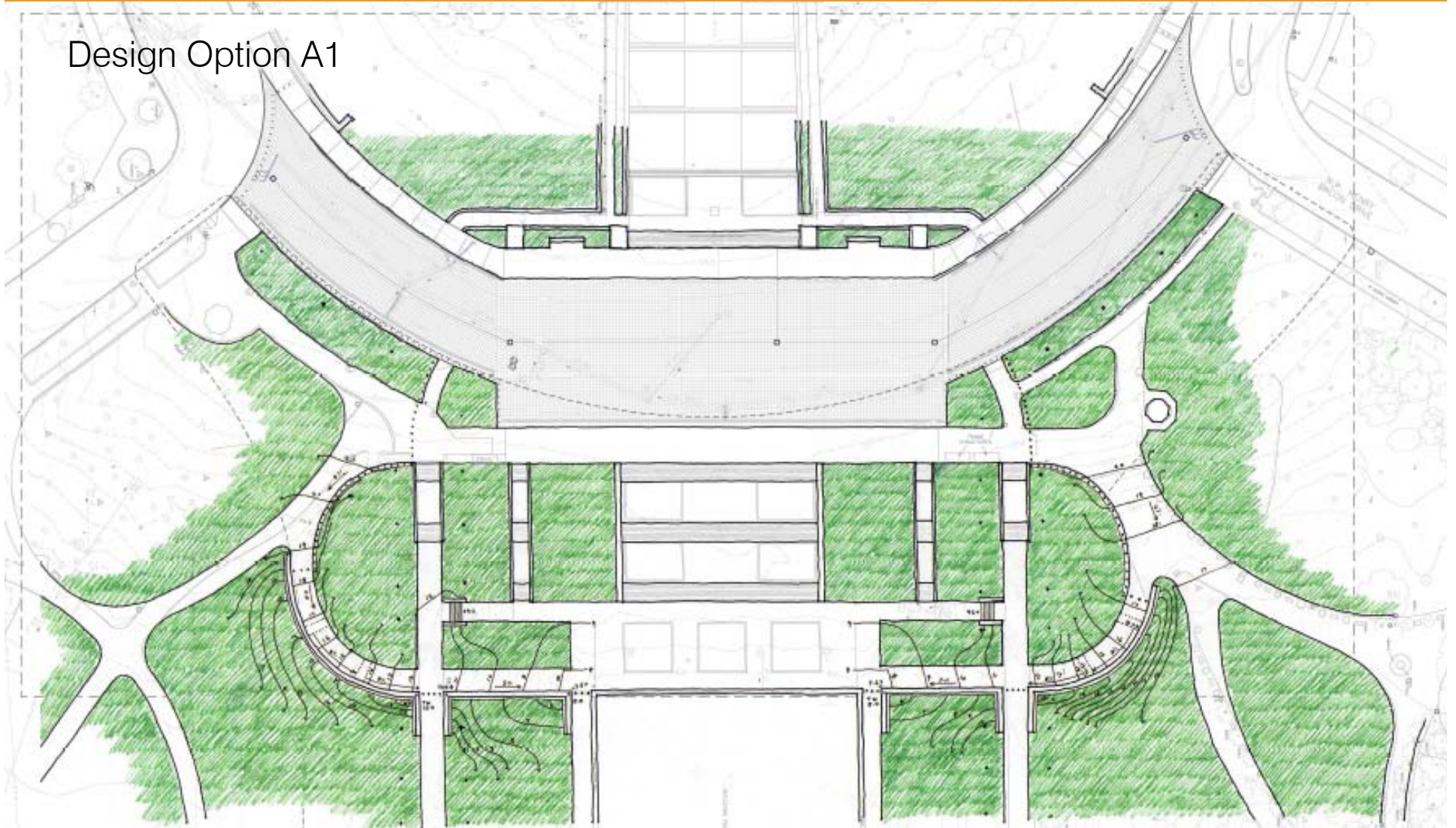


Temporary Concrete Barriers



Pedestrian Circulation Improvements

Design Option A1



Pedestrian Circulation Improvements

Design Option A2

This site plan for Design Option A2 features a large, central paved plaza. To the north of the plaza is a building footprint with a central courtyard. To the south is another building footprint with a central courtyard and two smaller rectangular courtyards. The site is surrounded by green spaces, with a large green area to the west and south. A road or driveway runs along the east side of the site. The plan includes various annotations such as '10' and '12' indicating dimensions or elevations, and '10' and '12' indicating dimensions or elevations. The plan also shows a network of paths and a central paved area.

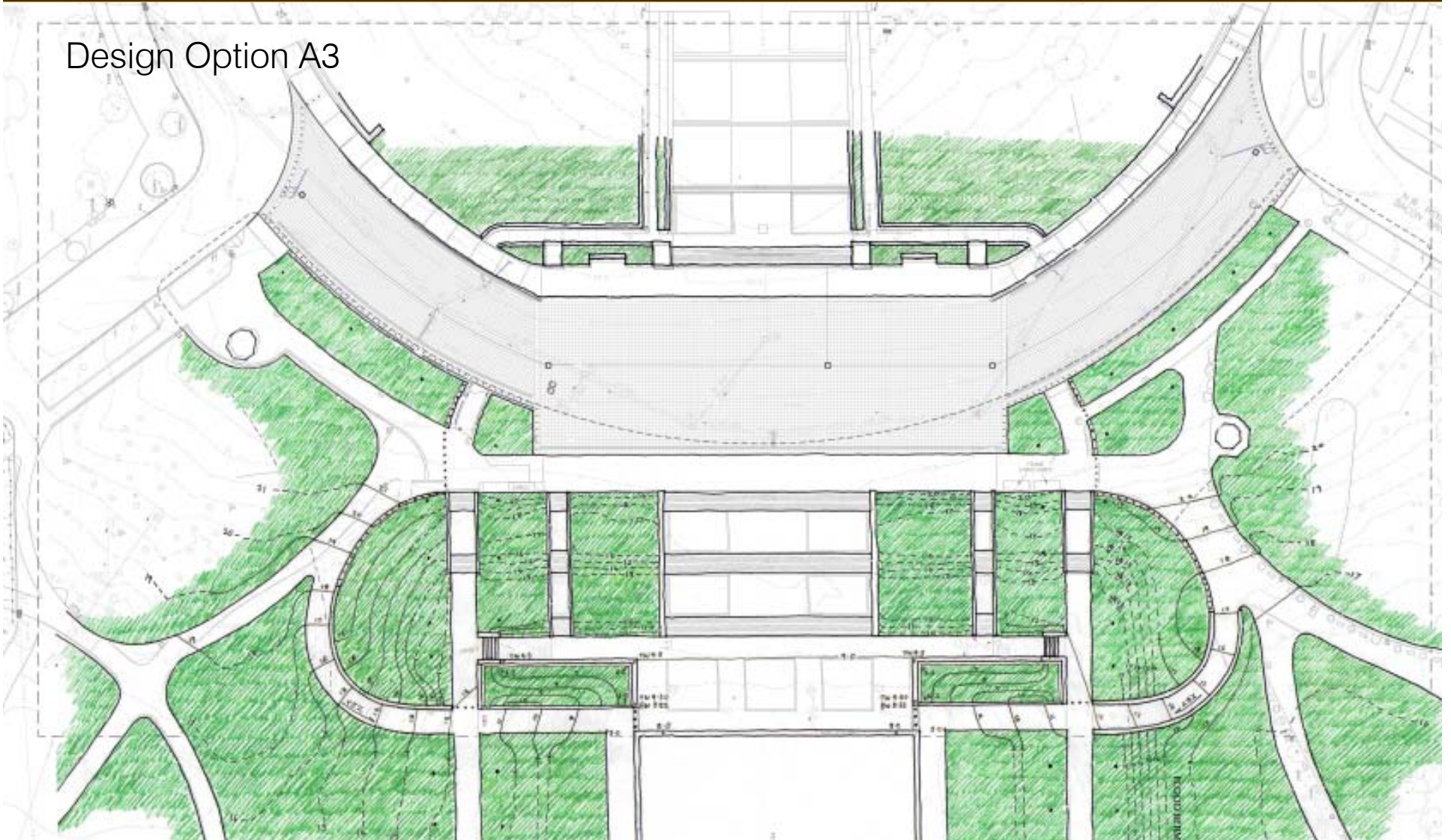



 THE Louis Berger Group, INC.
 



Pedestrian Circulation Improvements

Design Option A3



Pedestrian Circulation Improvements



THE Louis Berger Group, INC.



Pedestrian Circulation Improvements



THE Louis Berger Group, INC.



Design Alternatives



2. Reflecting Pool Structural Rehabilitation



THE Louis Berger Group, INC.



Structural Rehabilitation



Option B1

Repair in Place

Option B2

A new structural foundation slab and grade beam supported by piles would be installed

Option B3

A unified structural system that ties the foundation slab, grade beam, coping, and adjacent sidewalks together



THE Louis Berger Group, INC.



Design Alternatives



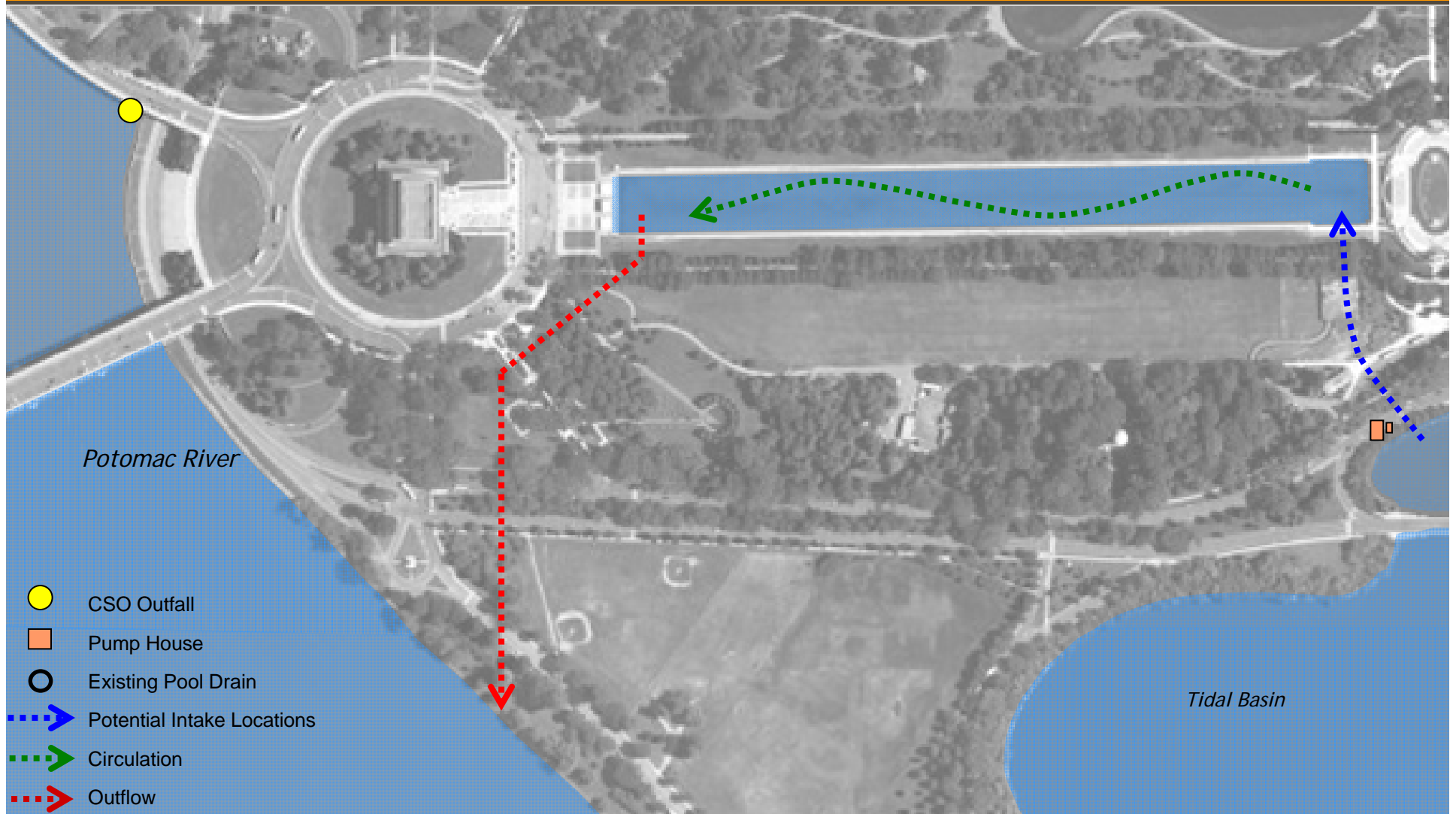
3. Reflecting Pool Water Systems Upgrades



THE Louis Berger Group, INC.



Water Systems Options

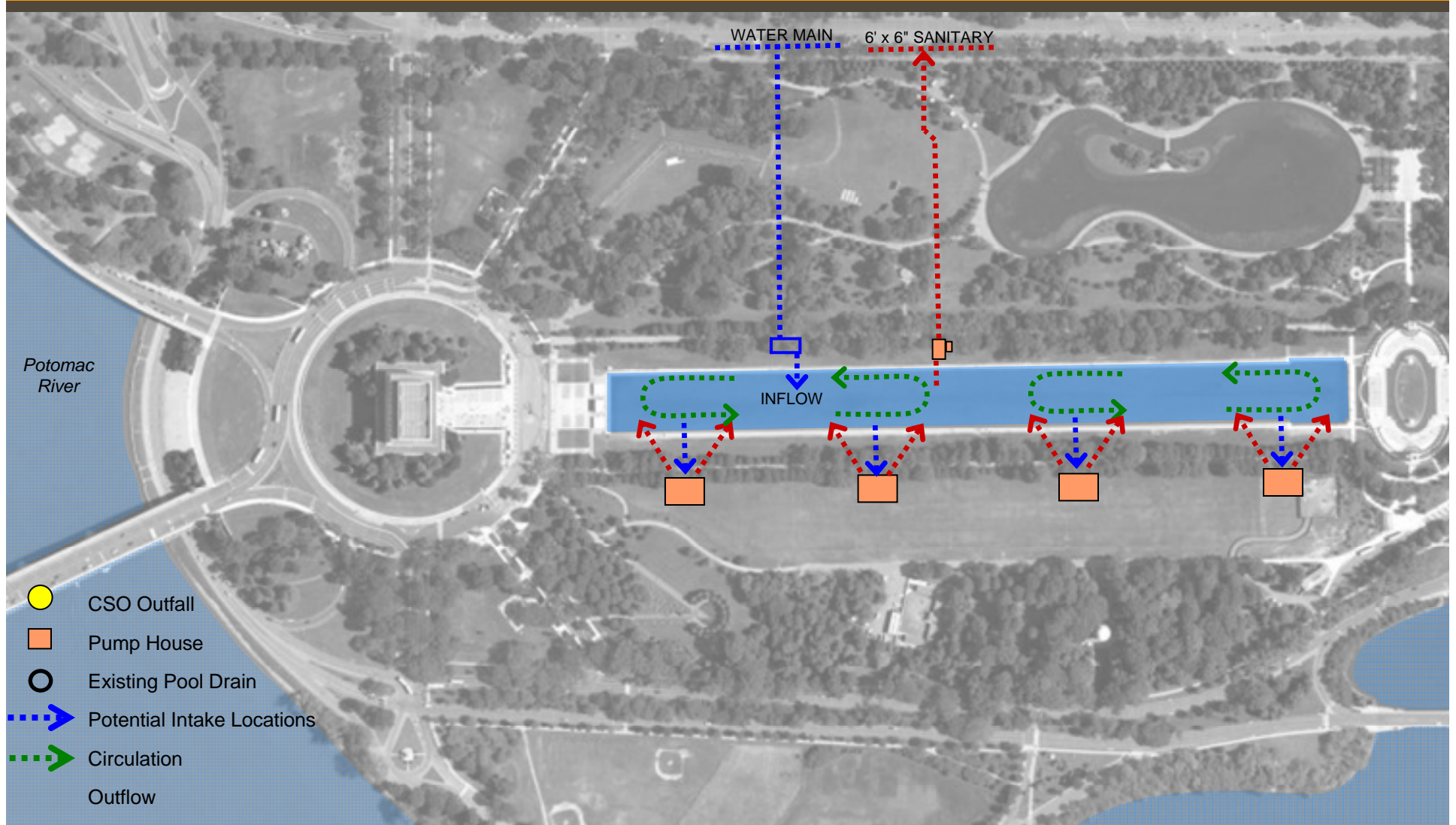


Option C1

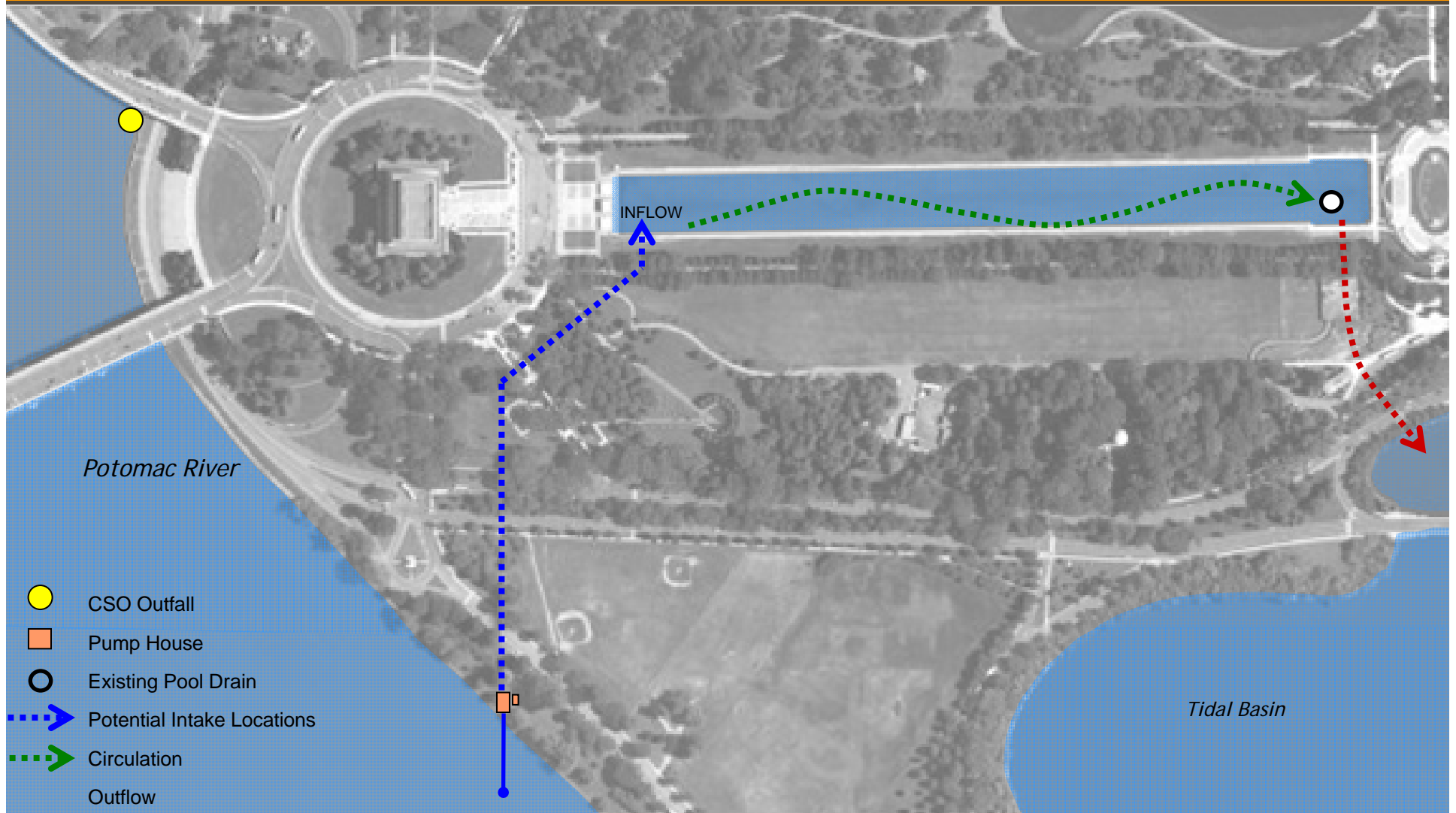
THE Louis Berger Group, INC.



Water Systems Options



Water Systems Options



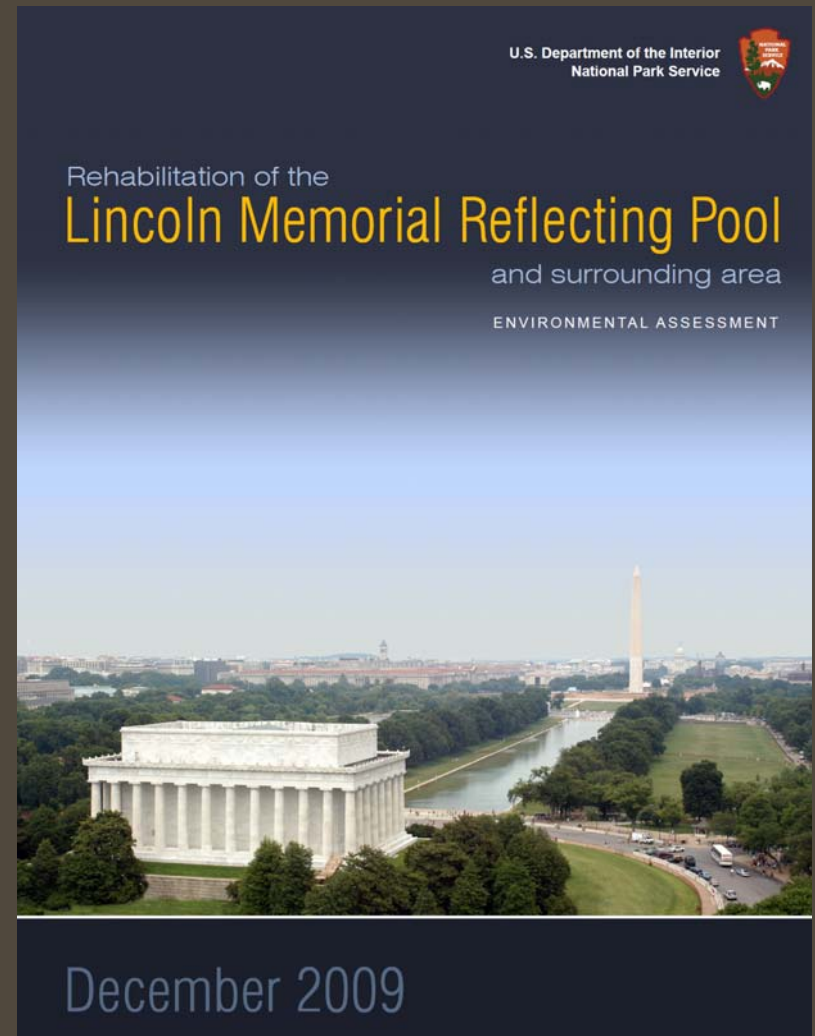
Opportunities to Comment

Terri Urbanowski
Denver Service Center
12795 West Alameda Parkway
Lakewood, CO 80288-2838
202 401-0017 fax

<http://parkplanning.nps.gov/>
And search for National Mall and Memorial
Parks

In order for your comments to be considered as part of this phase of the project, all comments must be received by **January 29, 2010**.

Lastly, we ask that, for Section 106 purposes, you highlight any comment on how the projects and its components may affect National Register of Historic Places resources.



THE Louis Berger Group, INC.



Thank You



THE Louis Berger Group, INC.

