

Programmatic Agreement

Between KALAUPAPA NATIONAL HISTORICAL PARK AND THE HAWAI'I STATE HISTORIC PRESERVATION OFFICER

REGARDING THE

Project to Rehabilitate Failing Electrical System for Settlement and Installation of Power Service to the Water Pumphouse at Kalaupapa National Historical Park

WHEREAS, Kalaupapa National Historical Park (the park or KALA) was established in 1980 with legislation directing the National Park Service (NPS) to preserve and interpret the Kalaupapa settlement as well as maintain a living community for the Kalaupapa Hansen's Disease (leprosy) patients. Today, an active care home, managed by the State of Hawai'i Department of Health (HDOH), provides medical treatment and, by law, remaining patients are guaranteed the ability to live in the Settlement for as long as they wish; and,

WHEREAS, the current electrical distribution system, originally installed in 1920 and updated in 1969, is owned by State of Hawai'i Department of Health (HDOH) and, through a lease agreement with DHHL, and enabling legislation, the system is maintained and operated by the NPS. The system is currently outdated, inadequate, does not meet modern safety codes, and creates unsafe, life threatening conditions for residents, NPS staff, and the public. This project will use federal funds to rehabilitate the failing electrical system which constitutes an undertaking under 36 CFR part 800.16 (y); and,

WHEREAS, KALA has defined the undertaking's area of potential effect (APE) as a 20-foot construction activity area on either side of the existing power line (See Attachment 1). Construction activities will repair and upgrade the 1- and 3- phase overhead electrical distribution and convert it to a looped system. The APE will also include defined staging areas for laydown and storage of materials and proposed designs for safe, reliable, efficient, and cost-effective power service to the water pumphouse; and,

WHEREAS, KALA has identified the need to prioritize the delivery of safe power to the peninsula that will require a phased approach to design and construction over a several year period; and,

WHEREAS, KALA understands that this undertaking may have the potential to cause an adverse effect on Kalaupapa Leprosy Settlement Historic District, a National Historic Landmark, also listed in the National Register of Historic Places (NR76002415) containing multiple archaeological sites; historic structures; and landscapes eligible, nominated or listed for the

National Register of Historic Places (See Attachment 2 and 3), and has consulted with the Hawai‘i State Historic Preservation Officer (HI-SHPO) and Native Hawaiian Organizations (NHOs) pursuant to 36 CFR part 800, of the regulations implementing Section 106 of the National Historic Preservation Act (54 U.S.C. § 306108); and,

WHEREAS, KALA cannot fully determine the effects to historic properties prior to approval of the undertaking due to the phased design approach, the development of a programmatic agreement under 36 CFR Part 800.14(b) is appropriate; and,

WHEREAS, the National Park Service has previously consulted with the Hawai‘i State Historic Preservation Officer (HI-SHPO) to identify the area of potential effects (APE) (See Attachment 1); and,

WHEREAS, the National Park Service has invited the State of Hawai‘i State Historic Preservation Officer (HI-SHPO) to participate as a signatory, and they will participate; and,

WHEREAS, the National Park Service has invited the Advisory Council on Historic Preservation to participate as a signatory, and they will not participate; and,

WHEREAS, the National Park Service has invited the consulting parties as listed on attachment 5; and,

WHEREAS, additional Native Hawaiian Organizations from the U.S. Department of the Interior Office of Native Hawaiian Relations (DOI-ONHR) List of Native Hawaiian Organizations (NHOs) were invited to consult and sent newsletters, flyers, and opportunities for online presentations informing them of the project work within the park and the development of this agreement; and,

WHEREAS, in accordance with CFR 36 Part 800.2 (d) (2) of the National Historic Preservation Act (NHPA) a draft agreement has been posted on the National Park Service’s Planning, Environmental and Public Comment website for public review and comment on April 4, 2024.

NOW, THEREFORE, KALA and HI-SHPO mutually agree that the undertaking shall be implemented in accordance with the following stipulations to consider the effect of the undertaking on historic properties.

STIPULATIONS

KALA shall ensure that the following measures are carried out:

I. CONSULTING PARTIES

- a. In accordance with 36 CFR §800.3(c) (3), should KALA receive written requests of organizations to participate as Consulting Parties at any point during the term of this PA, KALA shall consider each request and, in consultation with the HI-SHPO, identify additional Consulting Parties.
- b. The KALA Superintendent will provide the Consulting Parties with the address and contact information for the office within the park that will receive comments under this PA.
- c. The KALA Superintendent will maintain a list of Consulting Parties and will provide this list to the HI-SHPO and other Consulting Parties upon request and in its reporting under this PA.

II. MEASURES TO AVOID, MINIMIZE, OR MITIGATE ADVERSE EFFECTS ON HISTORIC PROPERTIES

KALA will perform the measures described here to avoid, minimize, and mitigate adverse effects on historic properties through a protocol for communication and phased consultation. To accomplish this the NPS will submit separate compliance packages for the HI-SHPO and consulting parties review for each design segment: currently, segment 1, the light station to the settlement area via Kamehameha St; segment 2, the settlement area; and segment 3, the water pump station area (See Attachment 1). Reviews will be separated into two design phases: Schematic Design Review and Construction Design Review. The NPS will make an assessment of effect during the Schematic Design Review period, and verify in consultation that the assessment is still valid during the Construction Design Review. If additional design segments are identified during the course of the project, the NPS will use the same design review process identified below for each new or revised segment.

A. Schematic Design Review

1. The review documents for HI-SHPO and consulting parties will be at the 90% schematic design.
 - a. KALA will submit documents to HI-SHPO through the HICRIS intake system as a "supplemental submittal" via HICRIS Project # 2024PR00415. Once submitted to HI-SHPO via HICRIS, KALA will forward confirmation email with "token number" to the Hawaii State Historic Preservation Division Archaeology Branch Chief and Architecture Branch Chief to expedite processing.
2. NPS will provide HI-SHPO and Consulting Parties with a determination of effect on historic properties with each 90% schematic design review package.
 - a. HI-SHPO and consulting parties will have 30 days to reply to the determination of

effect on historic properties.

- b. If after the 30-day response period there is no response from the HI-SHPO or the Consulting Parties, the NPS will assume concurrence with the NPS determination. The NPS will make a reasonable and good faith effort during every comment period to contact a non-responsive party before moving forward.
- c. If the NPS identifies an adverse effect through consultation with HI-SHPO and other consulting parties, the NPS will continue consultation to identify a resolution of the adverse effects and/or appropriate mitigations in a memorandum of agreement (MOA). The HI-SHPO and consulting parties will have 30 days to respond to the NPS proposal to avoid or mitigate adverse effects. If no response is received within 30 days, the NPS will move forward with its proposed resolution measures.
 - i. KALA will submit any draft MOA to HI-SHPO through the HICRIS intake system as a "supplemental submittal" via HICRIS Project # 2024PR00415. Once submitted to HI-SHPO via HICRIS, KALA will forward confirmation email with "token number" to the Hawaii State Historic Preservation Division Archaeology Branch Chief and Architecture Branch Chief to expedite processing.

B. Construction Design Review

1. The NPS will provide the draft construction design documents for each design segment of the project to the HI-SHPO and consulting parties for a 21-day review to verify that the assessment of effects has not changed from the schematic design. If the NPS does not receive comments from a consulting party after 21 days, the NPS will assume the original finding of effect stands. If a new adverse effect is determined, the NPS will consult to resolve the adverse effect as described in A.2.c above.
 - a. KALA will submit draft construction design documents to HI-SHPO through the HICRIS intake system as a "supplemental submittal" via HICRIS Project # 2024PR00415. Once submitted to HI-SHPO via HICRIS, KALA will forward confirmation email with "token number" to the Hawaii State Historic Preservation Division Archaeology Branch Chief and Architecture Branch Chief to expedite processing.
2. Once the NPS receives the final construction design documents from the construction contractor for all phases of the project, the NPS will provide a draft Summary of Assessment of Effects document to the HI-SHPO and consulting parties detailing the identification process and any impacts to resources, including cumulative effects, and mitigations, plans and treatments enacted to protect resources.

- a. HI-SHPO and Consulting Parties will have 30 days to review this document and concur with the NPS' consolidated assessment of effects, including cumulative effects.
- b. If after the 30 day response period there is no response from either the HI-SHPO or the Consulting Parties the NPS will assume that both parties have concurred with the NPS determination of effects on historic properties as relayed in the draft document
- c. If the NPS identifies an adverse cumulative effect, or an adverse effect not previously identified in the schematic design review, in the draft Summary of Assessment of Effects document, the NPS will consult with the HI-SHPO and other Consulting Parties to identify a resolution of the adverse effects and/or appropriate mitigations, including but not limited to the development of a Memorandum of Agreement.

C. Change in Design Scope Resulting in a Substantial Modification During Construction

1. The NPS will notify signatories and Consulting Parties if a substantial modification that is likely to affect historic properties is identified by the NPS outside of the scope of the agreed upon construction design for each phase of the project for a 14-day review to verify that the assessment of effects on Historic Properties has not changed from the agreed upon construction design. If the NPS does not receive comments from a signatory or consulting party after 14 days, the NPS will assume the original finding of effect stands. If a new adverse effect is determined, the NPS will consult to resolve the adverse effect as described in A.2.c above.
 - a. KALA will submit notification of substantial modifications to project scope of work to HI-SHPO through the HICRIS intake system as a "supplemental submittal" via HICRIS Project # 2024PR00415. Once submitted to HI-SHPO via HICRIS, KALA will forward confirmation email with "token number" to the Hawaii State Historic Preservation Division Archaeology Branch Chief and Architecture Branch Chief to expedite processing.

D. Archaeological Monitoring During Construction

1. KALA will work with HI-SHPO to develop an archaeological monitoring and reporting plan prior to construction activities. At a minimum the park will provide in that plan:
 - a. When the project includes ground disturbance within the area of potential effect a Secretary of the Interior (SOI) qualified archaeological monitor will be present. Status reports shall be provided for HI-SHPO review. KALA shall include the following provisions in construction contract stipulations for this project for the treatment of unanticipated archaeological discoveries as outlined in attachment 4, including human remains, during construction or other related ground-disturbing activities related to the undertaking and

within the APE.

- b. If a previously unidentified archeological resource(s) is discovered during project activities, the Qualified Archaeological Monitor is responsible for notifying construction personnel and shall be empowered to immediately halt all ground-disturbing activities in the area of the resource(s) and in the surrounding area (within 50 meters) where further subsurface remains can reasonably be expected to occur, and they shall immediately notify the NPS as outlined in attachment 4.
 - c. A qualified Archeological Monitor that meets or is directly supervised by an individual that is qualified under the SOI Standards for Archeology as outlined in the 1983 Federal Register, vol. 48, no. 190 and has a minimum of two years of Hawaiian archeology experience will complete the work. NPS shall conduct archeological monitoring as needed for ground disturbing activities in these areas including, but not limited, to the following:
 - Utility pole removal
 - Utility pole installation
 - Preparation of surface for generator pad installation
 - Preparation for surface of building renovation or repair
2. KALA will submit an annual summary report of all monitoring activities for the calendar year including updates on monitoring activities that occurred within the past calendar year.
 - a. KALA will submit the archaeological annual summary report to HI-SHPO through the HICRIS intake system as a "supplemental submittal" via HICRIS Project # 2024PR00415. Once submitted to HI-SHPO via HICRIS, KALA will forward confirmation email with "token number" to the Hawaii State Historic Preservation Division Archaeology Branch Chief and Architecture Branch Chief to expedite processing.

E. Inadvertent Discovery During Construction

1. Prior to construction points of contact (POC) between HI-SHPO, consulting parties, the Burial Council and KALA will be established for the communication and notification of inadvertent discoveries during construction and other related ground disturbance activities.
 - a. The NPS will notify signatories and consulting parties designated point of contact immediately (within 24 hours) by phone and email if an inadvertent discovery occurs during construction and the inadvertent discovery plan of action (See Attachment 4) will be enacted.
 - b. The NPS will brief the signatories and consulting parties in writing of the agreement on the plan of action to mitigate the impacts to a discovery and will have 3 days to

review and comment on the plan of action. If the NPS does not receive a response from a signatory or consulting party after 3 days, the NPS will move forward with the proposed NPS plan of action as agreed upon. If a new adverse effect is determined, the NPS will consult to resolve the adverse effect as described in A.2.c above.

2. If Human Remains are discovered during construction activities the NPS will follow the requirements of the NAGPRA.
3. When applicable, the National Park Service will follow the principles within the ACHP's Policy Statement on Burial Sites, Human Remains, and Funerary Objects, dated March 1, 2023
4. Pursuant to HRS § 6E-43.5(a) the NPS will identify the appropriate council representative and communicate with the Burial Council so they can conduct their duties under HRS § 6E-43

III. DURATION

This PA will be reviewed every 5 years to not exceed (10) years from the date of its execution and will expire after ten years. Prior to such time, KALA may consult with the other signatories to reconsider the terms of the PA and amend it in accordance with Stipulation VI below.

IV. MONITORING AND REPORTING

Each year following the execution of this PA until it expires or is terminated, KALA shall provide all signatories to this PA a summary report via email describing work undertaken pursuant to its terms. Such report shall be provided no later than the 30th of each June for the duration of the agreement and shall include any scheduling changes proposed, any problems encountered, and any disputes and objections received in the Park's efforts to carry out the terms of this PA.

V. DISPUTE RESOLUTION

Should any signatory or concurring party to this PA object to the actions proposed or implementation of the terms of this PA, KALA shall consult with such party to resolve the objection. If the Park determines that such objection cannot be resolved, the Park will:

- a. Forward documentation relevant to the dispute, including Park's proposed resolution, to the ACHP. The ACHP shall provide the Park with its advice on the resolution of the objection within thirty (30) days of receiving adequate documentation. Prior to reaching a final decision on the dispute, the Park shall prepare a written response that considers any timely advice or comments regarding the dispute from the ACHP, signatories and concurring parties, and

provide them with a copy of this written response. The Park will then proceed according to its final decision.

- b. If the ACHP does not provide its advice regarding the dispute within the thirty (30) days' time period, the Park may make a final decision on the dispute and proceed accordingly. Prior to reaching such a final decision, the Park shall prepare a written response that considers any timely comments regarding the dispute from the signatories and concurring parties to the PA and provide them and the ACHP with a copy of such written response.
- c. The Park's responsibility to carry out the other actions subject to the terms of this PA, that are not the subject of the dispute, remains unchanged.

VI. AMENDMENTS

This PA may be amended when such an amendment is agreed to in writing by all signatories. The amendment will be effective on the date a copy signed by all of the signatories is filed with the ACHP.

VII. TERMINATION

If a signatory to this PA determines that its terms will not or cannot be carried out, that party shall immediately consult with the other signatories to attempt to develop an amendment per Stipulation VI, above. If within thirty (30) days (or another time period agreed to by all signatories) an amendment cannot be reached, any signatory may terminate the PA upon written notification to the other signatories.

Once the PA is terminated, and prior to work continuing the undertaking, the Park must either (a) execute another Programmatic Agreement or Memorandum of Agreement pursuant to 36 CFR § 800.6, or (b) request, consider, and respond to the comments of the ACHP under 36 CFR § 800.7. The Park shall notify the signatories as to the course of action it will pursue.

VIII. ANTI-DEFICIENCY ACT

Actions taken by KALA in accordance with this PA are subject to the availability of appropriated funds, and nothing in this PA shall be interpreted as constituting a violation of the Anti-Deficiency Act (31 USC § 1341). The Park will make reasonable and good faith efforts to secure the necessary funds to implement this PA in its entirety. If compliance with the Anti-Deficiency Act alters or impairs the Park's ability to implement the stipulations of this PA, the Park will consult in accordance with the amendment and termination procedures found in Stipulations VII of this agreement.

This PA shall become effective on the date the last signatory signs. The execution of this PA by the Park, and implementation of its terms evidence that the Park has considered the effects of this undertaking on historic properties and afforded the ACHP an opportunity to comment.

SIGNATORIES:

Kalaupapa National Historical Park

Date: April 3, 2024

Nancy Holman, Superintendent (Linh Anh Cat signing as acting Superintendent)

Hawai'i State Historic Preservation Officer

Date:

**Dawn Chang, HI SHPO
and Chairperson of Department of Land and Natural Resources**

Attachment 1

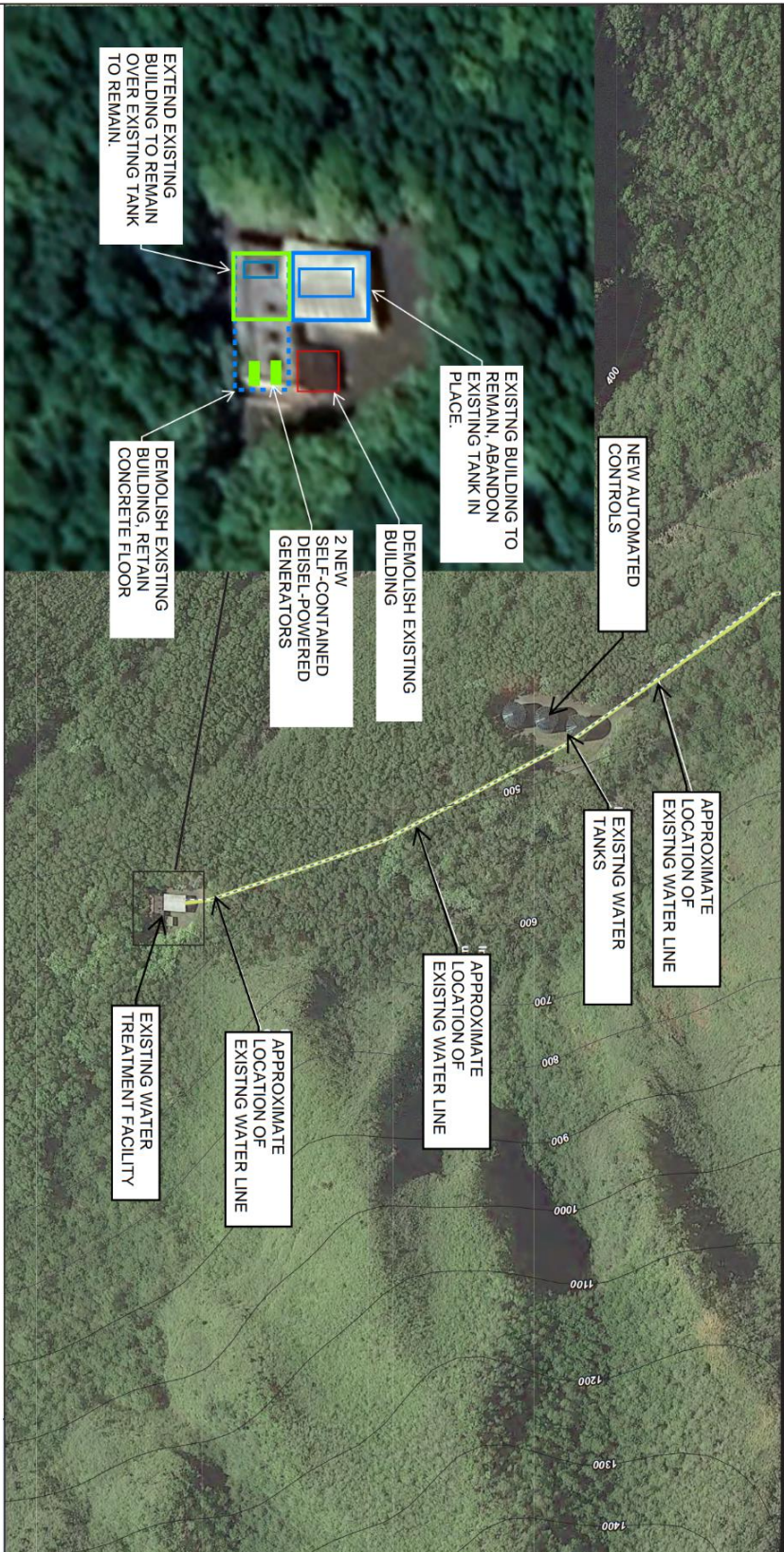
The Electric Distribution may not continue after # 2. #1 is the Light Station. Light station may convert to alternative power.



TDX POWER SERVICES

KALA 217676
SCHEMATIC DESIGN REVIEW RECOMMENDATIONS
SETTLEMENT TO LIGHTHOUSE





KALA 217676
SCHEMATIC DESIGN REVIEW RECOMMENDATIONS
WATER TREATMENT FACILITY

Attachment 2

LIST OF STRUCTURES

Building Name	Location	CRIS ID#	Date of Origin
Materials Shed	Administrative Area	59976	1939
Quonset Storage Hut	Administrative Area	59977	1950; altered 1980-1990; roof repaired 1995 and 2015
Laundry	Administrative Area	59978	1930-1931; damaged tsunami 1946; altered 1980; roof repairs 1995
Crematory	Administrative Area	59975	1983-1939; additions 1992-2000
Shoichi Hamai Residence	Administrative Area	59954	1932
Garage	Administrative Area	573920	Undetermined
Benjamin Residence	Administrative Area	59953	1938; altered 1994
Storage Shed, Damien Road	Administrative Area	793330	Undetermined
Maintenance Shop	Administrative Area	59979	1931; damaged tsunami 1946; converted to machine shop 1950; altered 1970
Ice Plant	Administrative Area	59980	1931-1932; altered 1939-1940 and 1951-1952
Restroom	Administrative Area	59988	1930-1931
General Warehouse	Administrative Area	59981	1932; addition 1937-1938; altered 1984; roof repaired 1995
Patient Store	Administrative Area	59982	1934; altered 1935; reroofed 2013
Gas Station	Administrative Area	59984	1934
Post Office	Administrative Area	22687	1934; repaired 1935
Administrative Building	Administrative Area	56608	1961; repaired 2012
Library	Administrative Area	56607	1956; repaired 2007
Souza Residence	Administrative Area	59955	1931; moved 1971
Shed	Administrative Area	55809	Circa 1950-1964
Fuesaina's Bar	Administrative Area	59956	1930; additions 1970s; 1980; 2009; 2014-2018
Fuesaina's Bar Storage	Administrative Area	59985	Circa 1938-1950; rehabilitation 2004-2011
Fuesaina's Bar Restroom	Administrative Area	342014	1980
Garage	Administrative Area	573509	1940; moved 1980; repaired 2011; pad added 2015
Construction Camp Residence	Administrative Area	55813	1950; altered 1990s; rehabilitated 2012
Construction Camp Wash	Administrative Area	55786	1950; rehabilitated 2010
DOH Motor Pool Garage	Administrative Area		1939; altered/addition by 1964
DOH Motor Pool Gas Station	Administrative Area	59973	1939
Kamahana Store	Administrative Area	59990	1938
Mae Malakaua Residence	Administrative Area	22629	1931; altered 2014
Craft and Storage Building	Administrative Area	22634	1931; altered 1940; burned 1948; rebuilt 1948-1949; stabilized 2014
Carport and Storage Shed	Administrative Area	22634	Circa 1964-1972
Old Stone Church	Administrative Area	21064	1853
Jail	Administrative Area	22635	1931; addition 1950

Building Name	Location	CRIS ID#	Date of Origin
Police Headquarters	Administrative Area	22636	1931; addition 1950
Paschoal Hall	Administrative Area	21065	1916; altered 1934-1936; name changed 1958; restored and rehabilitated 1998-2012; repainted 2006; interior rehabilitated 2010-2012; repair 2015
Fumigation Room	Administrative Area	22633	1935; rehabilitated 2011
Outpatient Clinic	Administrative Area	22628	1940; moved 1948
Oceanside Pavilion	Administrative Area	59986	By 1950; altered 1990s
Kalaupapa Landing	Administrative Area	59991	1906; landing and breakwater added 1930-1932; altered 1950; repaired and rehabilitated 2012
Bulkhead Wall, Damien Road	Administrative Area	793334	1906; rehabilitated 2012
Breakwater, Damien Road	Administrative Area	793336	1930-1932; rehabilitated 2012
Kamehameha Street Stone	Administrative Area	56535	1938; repaired 2015
Industrial Area/Administrative Rock Walls	Administrative Area		Early 1900s; repaired 2000s
Concrete Footing for Flagpole	Administrative Area		By 1950
Recreation Court	Administrative Area	793341	Circa 1961-1966
Kalaupapa Memorial Hospital	Administrative Area	56606	Circa 1979
Hale Malama – NPS Cultural Resource Management and Curatorial Facility	Administrative Area		2005-2011
Garage/HAZMAT	Administrative Area		Circa 1992 and 2000
Vehicle/Equipment Storage	Administrative Area		1991; rebuilt 2008-2009
DOH Large Equipment Storage	Administrative Area		1991; rebuilt 2008-2009
NPS Garage near 302/303	Administrative Area		Circa 1977-1992
Containers	Administrative Area		2003-2004
Store Warehouse	Administrative Area		1992-2002
Ambulance Garage	Administrative Area		1977-1983
Generator Shed	Administrative Area		2005-2012
Electrical System Features	Administrative Area		By 1969
Bay View Home Building 1	Bay View	21043	1916; stained 1919-1920; a wheelchair ramp was added to the main entrance in 1985
Bay View Home Building 2	Bay View	21044	1916; altered 1930; wood wheelchair ramp added 1992
Bay View Home Residence 3	Bay View	21045	1915; altered 193_
Bay View Home Dining Hall	Bay View	21046	1937
Old Bay View Kitchen and Dining Room	Bay View	21047	1916; altered 1932-1934; windows installed 1990; roof repaired 2007-2008
Carport/Garage	Bay View	55723	Circa 1950-1964
Transformer Station	Bay View	342032	By 1950

Building Name	Location	CRIS ID#	Date of Origin
Bay View Home Building 8	Bay View	21049	1928 (assembly hall); adapted for use as a chapel circa 1930; repurposed as a recreation hall by 1938; altered by 1950
Visitors' Quarters	Bay View	21051	1933; altered 1935-1936, 1988-1993, and 2001-2002
Wilcox Memorial Building	Bay View	21052	1906 (dispensary); altered 1922 (Delco plant to generate electricity); 1930 mobile x-ray unit added; 1932 (hospital staff quarters); 1950 altered and enlarged (residence for Brothers of the Sacred Hearts Order); rehabilitated 2011
Visitors' Pavilion	Bay View	21069	1933; altered 1940; rehabilitated between 2004 and 2008
Visitors' Quarters Kitchen	Bay View	56539	1933; altered 1935-1936; dining area later enclosed, wood porch and wheelchair ramp added by 1994 to aid accessibility
Garage 524	Bay View	55718	Circa 1950-1964; altered 1990; partially rebuilt 2011; lattice doors added to the open bay 2015
Patients' Restroom	Bay View	22638	1940; rehabilitated 2010-2011
Telephone Station	Bay View	59993	Circa 1938-1950 (garage); converted to Telephone Station by 1977
Bay View Home Building 10a	Bay View	21050	Circa 1930; altered ____
Garage 525	Bay View	55719	By 1938; altered 1990
Inouye Residence	Bay View	56511	Circa 1938-1950; 1990 (picture window was added in the west elevation); 2014 (large deck added)
Carport 526	Bay View	55720	Circa 1938-1950
Elroy Malo Residence	Bay View	56512	1936; wood wheelchair ramp added between 1995 and 2003
Quonset Dormitory	Bay View	338860	1950; altered 1985; roof patched 2009
Lanai 528	Bay View	55721	Circa 1964-1972
Garage 512	Bay View	55722	Circa 1938-1950; stabilized and reroofed 2009
Garage	Bay View		Undetermined
Bay View Home Entrance Gate	Bay View	56521	1917
Shed	Bay View		Undetermined
Fire Hose Box	Bay View		Undetermined
Electrical System Features	Bay View		By 1969
Fencing around the Inouye Residence	Bay View		Undetermined
Bollard and Chain Edging	Bay View		By 1969
Wooden trash can stands	Bay View		Undetermined
Wayside Exhibit	Bay View		Post 1969
Richard Marks Beach House	Beach Houses	56121	By 1938

Building Name	Location	CRIS ID#	Date of Origin
Bernard Punikai`a Beach House	Beach Houses	56122	Circa 1964-1972
Elizabeth Bell Beach House	Beach Houses	336829	By 1938
Elaine Remigio Beach House	Beach Houses		By 1938
Nicholas Ramos Beach House	Beach Houses	56196	By 1938
Building 690	Beach Houses	56207	Circa 1950-1964
Lion's Club Restroom 687	Beach Houses	55730	Circa 1950-1964
Lion's Pavilion (Ocean View Pavilion)	Beach Houses	56611	1965
Meli and Randall Watanuki Beach House	Beach Houses		2008
Richard and Gloria Marks Beach House	Beach Houses	342319	Circa 1977-1992; damaged and repaired 2014
Shoichi Hamai Beach House	Beach Houses	59701	2010-2012
Richard Marks Beach House	Beach Houses	573955	Circa 1950-1964
Richard Marks Beach House Outhouse	Beach Houses	573956	Circa 1977-1992
Shelter 1	Beach Houses		Circa 1972-1977
Shelter 2	Beach Houses		1974
Fencing	Beach Houses		Undetermined
Stacked lava rock walls	Beach Houses		By 1969
Electrical system features	Beach Houses		By 1969
Bishop Home for Girls	Bishop Home	21041	1934; interior altered 1990s; substantial rehabilitation occurred 2006-2007
St. Elizabeth Chapel	Bishop Home	21042	1934; rehabilitation occurred in 2013
Barbara Marks Residence	Bishop Home	56499	1933; altered 1969 and 2002
Bishop Home Carport	Bishop Home	573877	1977-1992
Bishop Home Residence 4	Bishop Home	56500	1933; altered 2002
Bishop Home Boiler Plant	Bishop Home	343769	1932
Shed	Bishop Home		Undetermined; post 1969
Bishop Home Walls and Entrance Gates	Bishop Home	56526	By 1932s; stone piers circa 1932; repaired in the early 2000s
Bishop Home Fence and Gate	Bishop Home		1930; a 3-foot-high wood picket fence surrounded the Bishop Home for Girls as late as 1994
Bishop Home Cistern	Bishop Home	56530	The date of origin of the cistern is not known but it was established by 1969
Electrical system features	Bishop Home		By 1969
Chlorinator Building	Damien Road	106723	1957-1958; stabilized 2015
Filter Building	Damien Road	1062727	Circa 1964
Water Tanks	Damien Road	573952; 573957	1894-1908
Tsunami Evacuation Complex	Damien Road		2012-2014
Cattle Guard	Damien Road		

Building Name	Location	CRIS ID#	Date of Origin
Livestock Fencing and Cattle Chutes	Damien Road		
St. Francis Catholic Church	Kalaupapa Churches	21063	1908
St. Francis Rectory	Kalaupapa Churches	56502	1930-1931; rear porch added 1947; rehabilitated 1979
Damien Hall	Kalaupapa Churches	56536	1908-1910
St. Francis Church Garage	Kalaupapa Churches	56537	Circa 1966-1977
St. Francis Churchyard Walls and Gates	Kalaupapa Churches	56524	Circa early 1900s
Grotto at St. Francis Church	Kalaupapa Churches	56520	Undetermined; by 1969
Culverts	Kalaupapa Churches		Post 1969
Fire hose box	Kalaupapa Churches		Post 1969
Church of Jesus Christ of Latter-Day Saints	Kalaupapa Churches	56610	1965
Church of Jesus Christ of Latter-Day Saints Parish Hall	Kalaupapa Churches	59972	1940
Kamehameha Street Residence 256	Kalaupapa Churches	59971	1935
Church of Jesus Christ of Latter-Day Saints Walls and Gate	Kalaupapa Churches	56525	Circa early 1900s
Fence	Kalaupapa Churches		
Kana`ana Hou Church	Kalaupapa Churches	21062	1915; massive concrete ramp added 1983
Kana`ana Hou Church Parish Hall	Kalaupapa Churches	59972	1968
Building 637	Kalaupapa Churches	101951	1950
Calvanist Parsonage	Kalaupapa Churches	59994	1932
Garage	Kalaupapa Churches	573907	1935
Kana`ana Hou Churchyard Walls and Gates	Kalaupapa Churches	56523	Circa early 1900s
Fenced enclosure	Kalaupapa Churches	573530	Rebuilt 2014; damaged by a tree 2015
Siloama Church	Kalawao	21067	1871; rebuilt 1880; abandoned in 1927-1938; repaired 1938; altered and rededicated 1949; reconstructed in 1966
Siloama Restroom	Kalawao	59992	Circa 1996
St. Philomena Church	Kalawao	21068	1872; nave added 1876; 1888 steeple collapsed and building reassembled; repaired 1950; roof replaced 1998; rehabilitated 2009
Siloama Church Stone Wall	Kalawao	56606	Circa 1870
St. Philomena Church Stone Wall	Kalawao	56604	Circa 1870; repaired 2006
Rock walls and ruins	Kalawao		
Old Stone Water Reservoir	Kalawao	56558	1886
Baldwin Home Gate and Walls	Kalawao	573984	Circa 1890s; repaired 2014

Building Name	Location	CRIS ID#	Date of Origin
Judd Park Pavilion	Kalawao	342332	1950; repaired 2014
Kalawao Picnic Shelters 1 and 2	Kalawao	573907	1935
Shed 723	Kalawao		1991
Retaining Wall and pipe railings	Kalawao		
Grave wall and fencing	Kalawao		
Wood safety fence at Judd Park overlook	Kalawao		
Rock walls	Kauhako Crater		19 th and 20 th centuries
Deer fencing	Kauhako Crater		Post 1969
McVeigh Home Garage	McVeigh	56554	1934
Nahoopii Residence	McVeigh	56553	1936
Gaspar Residence	McVeigh	56551	1934
McVeigh Storage Building	McVeigh	55717	By 1950; altered 1990
Shed near McVeigh Storage Building	McVeigh	56552	Circa 1950; altered 1990
Nalaieiua Residence	McVeigh	56549	1930-1932; repaired 2010
Hashimoto Residence	McVeigh	56550	1934
McVeigh Dormitory	McVeigh	21056	1929; altered 1978; rehabilitated 2003
McVeigh Card Room	McVeigh	56509	1932
William Kaakimaka Residence	McVeigh	56548	1932
McVeigh Pool Hall	McVeigh	21055	1932; enclosed 1938 so residents could play ping pong; rehabilitated 2005
McVeigh Social Hall	McVeigh	21054	1929; converted to community center 1960; rehabilitated 2003
Boiler Room	McVeigh	56510	1931-1932
Gertrude Kaauwai Residence	McVeigh	56547	1933
McVeigh Home Wash House	McVeigh	55713	1934; partially rehabilitated 2004; stabilized 2015
McVeigh Home Residence 12	McVeigh	21053	1929; altered 1930s and 1950; rehabilitated 2003
McVeigh Home Residence 13	McVeigh	56507	1933
McVeigh Home Residence 14	McVeigh	56545	1932
Elizabeth Kahihikolo	McVeigh	56506	1932
Leabata Residence	McVeigh	56546	1932
Ed Kato's Studio	McVeigh	56501	1931; rehabilitated 2003
Nancy and James Brede Residence	McVeigh	56544	1933
Kahihikolo Residence	McVeigh	56543	1933
Edwin Lelepali Residence	McVeigh	56542	1933
Building 502	McVeigh	331233	1930
Watanuki Residence	McVeigh	56508	1933

Building Name	Location	CRIS ID#	Date of Origin
McVeigh Home Residence 2	McVeigh	56505	1933; altered 1987 and 1998
McVeigh Garage	McVeigh	56504	1933; repaired 2012
McVeigh Home, Kato Workshop	McVeigh	55710	Circa 1950-1964
McVeigh Home Shed	McVeigh	55712	Circa 1950-1964
McVeigh Home Garage	McVeigh	55711	Circa 1950-1964
Kahikina Residence	McVeigh	56503	1933; rehabilitated 2013
McVeigh Home Residence 6	McVeigh	56541	1933
Storage Shed	McVeigh		By 1864; collapsed after 2012
Shed/Carport	McVeigh		Early 1960s
Shed	McVeigh		
Shed	McVeigh		
Stone foundation east of the Boiler Room	McVeigh		By 1969
Stacked lava rock wall along eastern side of McVeigh Home complex	McVeigh		By 1969
Woven wire fencing	McVeigh		2014
Chain link fencing	McVeigh		
Salvaged fencing and gates	McVeigh		Undetermined
Culverts (2)	McVeigh		By 1969
Transmission tower	McVeigh		Post 1969
Utility features	McVeigh		Post 1969
Moloka'i Moloka'i Light Station	Moloka'i Moloka'i Light Station	21176	1908-1909
Moloka'i Moloka'i Light Station First Assistant Keeper's Residence	Moloka'i Light Station	232237	1950 (replaced 1909 structure)
Moloka'i Light Station Principal Keeper's Residence	Moloka'i Light Station	926707	1908-1909
Moloka'i Light Station Wash House	Moloka'i Light Station	573542	1909; rehabilitated 2008
Moloka'i Light Station Garage	Moloka'i Light Station	340719	Late 1910s; early 1920s; rehabilitated 2007-2008
Moloka'i Light Station Generator Shed	Moloka'i Light Station	59999	1934; rehabilitated 2008
Moloka'i Light Station Storage Vault	Moloka'i Light Station	55730	1908-1909; rehabilitated 2009
Oil Tank	Moloka'i Light Station	To be added	To be added
Moloka'i Light Station Stone Wall Perimeter	Moloka'i Light Station	926708	1909
Wire Perimeter Fence Posts	Moloka'i Light Station		1910
Fencing to exclude deer	Moloka'i Light Station		Post 1969
Electrical lines	Moloka'i Light Station		

Building Name	Location	CRIS ID#	Date of Origin
New Baldwin Home for Boys Entrance Gate	New Baldwin Home	56522	Circa 1907-1938
New Baldwin Home for Boys Rock Walls	New Baldwin Home		Undetermined; by 1969
Grotto and Garden Structure	New Baldwin Home	573951	Circa 1907-1938
Slaughterhouse	New Baldwin Home	59997	1953
Slaughterhouse corral	New Baldwin Home		undetermined
Slaughterhouse Restrooms	New Baldwin Home	59996	Moved from Staff Row 1950; rehabilitated 1999, 2015
Rock Crusher	New Baldwin Home	59998	1937-1938; rebuilt 1950; move to New Baldwin 1960
Concessionaire Building	New Baldwin Home		Undetermined
Mule corral	New Baldwin Home		1992
Municipal Solid Waste Dump Site	New Baldwin Home		1964-1972; capped and closed, detention basin added 2015
Construction Debris Dump	New Baldwin Home		1977-1992
Stormwater detention basin	New Baldwin Home		Post 1969
Puahi Street Bridge	New Baldwin Home		By 1969
Electrical system features	New Baldwin Home		By 1969
Seki Residence	Residential Area	22632	Circa 1908; damaged fire; stabilized 1999; rehabilitated 2003-2004
Puahi Street Garage	Residential Area	56538	Circa 1950-1964; rehabilitated 2006
Puahi Street Residence 103-54	Residential Area	55650	1964
Puahi Street Garage 515	Residential Area	55643	Circa 1950-1964
Puahi Street Storage Building	Residential Area	55641	Undetermined
Puahi Street Hothouse	Residential Area	55642	Altered 1977
Olivia Breitha Residence	Residential Area	55639	1962
Clarence Naia Residence	Residential Area	22630	By 1930s; ramp added 1994
Nono Residence	Residential Area	59957	By 1930s
Sagadraca Residence	Residential Area	55804	1962
Goodhue Street Shed 605	Residential Area	55807	By 1972
Goodhue Street Garage 609	Residential Area	55808	
Elaine Remigio Residence	Residential Area	59958	1931; roof 1980
Goodhue Street Garage 613	Residential Area	55805	By 1938
Goodhue Street Shed	Residential Area	55806	By 1964
Storage Shed/Carport	Residential Area	338619	By 1964
Goodhue Street Garage 614	Residential Area	55803	Post 1977
Cabane Residence	Residential Area	22639	1937; moved 1960
John Arruda Residence	Residential Area	55802	1964
Garage near John Arruda Residence	Residential Area		Circa 1977-1992
Bishop Street Garage	Residential Area	55740	Circa 1950-1964

Building Name	Location	CRIS ID#	Date of Origin
Yamamoto Residence	Residential Area	55739	1962; altered 1997
Bishop Street Garage 621	Residential Area	55738	By 1964; enlarged 1972 and 2000-2005
Paul and Winifred Harada Residence	Residential Area	56609	1931-1932
Garage	Residential Area	573919	Circa 1977-1992
McKinley Street Residence 123-62	Residential Area	55801	1962
Shed 590	Residential Area	55814	2008 (replaced a structure built circa 1950-1964)
Nicky Ramos Residence	Residential Area	59959	1930s
Guest House, Ramos	Residential Area	573913	Undetermined
McKinley Street Building 592	Residential Area	101950	Circa 1964 to 1972
Punikai`a Residence	Residential Area	59960	1931-1932; altered 1977
Lourdes Taghoy Residence	Residential Area	55769	1956
McKinley Street Residence 154	Residential Area	59961	Circa 1933; altered 1990
AJA Benevolent Society Hall	Residential Area	21066	1910; tori added 1935-1936 (since removed); rehabilitated 2005; chairlift added 2015
AJA Outbuilding	Residential Area	22637	1938
Bernard Punikai`a Residence	Residential Area	59962	1931-1932
Lucy Kaona Residence	Residential Area	55810	1956
Henry Nalaelua Residence	Residential Area	59964	1932; wheelchair ramp added 2009
Baldwin Street Garage	Residential Area	55819	Circa 1950-1964; stabilized 2004
Baldwin Street Residence 192-62	Residential Area	55770	1962
Nakoa Residence	Residential Area	59966	1930s
Baldwin Street Garage	Residential Area	5571	1950
Yonemori Residence	Residential Area	55772	1962
Haleakala Street Garage	Residential Area	55773	Circa 1964-1972
Katherine Costales Residence	Residential Area	55775	1956; wheelchair ramp added 2012
(Baldwin Street) Garage	Residential Area	573560	Circa 1964-1972
Nellie McCarthy Residence	Residential Area	55776	1956
Rea Residence	Residential Area	55777	1956
Kapi`olani Residence	Residential Area	59967	1931-1932; moved 1971
Ka`iulani Street Garage 563	Residential Area	55817	Circa 1964-1972
Ka`iulani Street Garage 564	Residential Area	55783	Circa 1964-1972; south elevation reconstructed 2007
Gloria Marks Residence	Residential Area	55782	1964
Richard Marks Residence	Residential Area	55780	1964
Richard Marks Bottle House	Residential Area	573890	1969
Richard Marks Carport	Residential Area	573904	1969
Garage	Residential Area	573911	1969

Building Name	Location	CRIS ID#	Date of Origin
Shed in Bus Storage Area	Residential Area	573915	1969
Elizabeth Bell Residence	Residential Area	59968	1931-1932
Ka`iulani Street Garage	Residential Area	344990	Circa 1964-1972
Ka`iulani Street Building 569	Residential Area	102323	1938; carport added 1972-1992
Soria Residence	Residential Area	59969	1931; moved 1966, altered 2004
Ka`iulani Street Garage	Residential Area	55815	By 1972
Sebastiana Fernandez Residence	Residential Area	59970	1931-1932; shed addition 1980s
Ka`iulani Street Garage 571	Residential Area	55779	Circa 1964-1972; rehabilitated 2005
Ka`iulani Street Storage Shed	Residential Area	344095	By 1950
Storage Shed	Residential Area	573912	1931-1932; rehabilitated 2006-2015
Kapi`olani Street Residence 199	Residential Area	55704	1931-1932; rehabilitated 2006-2015
Richard Purple Residence	Residential Area	55644	1962; rehabilitated 2004
Clarence and Ivy Kahilihiwa Residence	Residential Area	55662	1962; enclosed porch added 2004
Damien Road Garage 531	Residential Area	55664	Circa 1972; enlarged 1977-1992
Damien Road Carport Tool Shed	Residential Area	573908	Circa 1977-1992
Catherine Puahala Residence	Residential Area	55663	1956
Meli and Randall Watanuki Residence	Residential Area		1964; addition 2015
Garage 553	Residential Area	55665	Circa 1992-2000
Damien Road Carport	Residential Area	55707	Circa 1977-1992
Damien Road Residence 110-64	Residential Area	55697	1964
Damien Road Residence 111-56	Residential Area	55698	1956
Damien Road Residence 112-56	Residential Area	55699	1956
Anita Una Residence	Residential Area	55700	1962
Nakanishi Residence	Residential Area	55701	1964
Shed east of Nakanishi	Residential Area		Circa 1964-1972
Mamuad Residence	Residential Area	59965	1936
Damien Road Residence 26	Residential Area	59952	1932; moved circa 1964-1972
Residential Area Rock Walls	Residential Area	55641	
Chain link fences	Residential Area		
Wire fence	Residential Area		
Electrical system features	Residential Area		
Residence for Single Women	Staff Row	22627	1932; rehabilitated 2008
Guest cottage	Staff Row	56540	By 1950
Laundry Room and Apartment	Staff Row	329271	1940

Building Name	Location	CRIS ID#	Date of Origin
Dentist's Residence	Staff Row	21058	1892
Resident Physician's Residence/Administrator's Residence	Staff Row	21059	1901-1902; expanded 1911-1912; partially destroyed by fire and rebuilt 1929-1930, altered 1934
Assistant Resident Physician's Residence/Doctor's Residence	Staff Row	21060	1905-1906; addition 1911-1912; altered 1935-1936
Electrician's Residence	Staff Row	59995	1935-1936
Building 629/Utility Building	Staff Row	333513	Circa 1950-1964
Gate posts	Staff Row		
Staff Row Picket Fence Footing and Gate	Staff Row	793339	1932; replaced post 1969
Carports	Staff Row		Post 1969
Shed	Staff Row		Post 1969
Freezer building	Staff Row		1975
Shed	Staff Row		Post 1977
Rock walls	Staff Row		By 1969
Electrical system features	Staff Row		By 1969
Utility features (hose box)	Staff Row		Post 1969
Containers	Staff Row		Post 1969
Olivia's Beach House	West Coast Cemeteries	55729	Circa 1938-1950
Dry stacked lava rock walls	West Coast Cemeteries		Early 20 th century; affected by tsunami 1946
Enclosures	West Coast Cemeteries		
Concrete piers	West Coast Cemeteries		
Miriam Mina Residence	West Coast Cemeteries	235713	1931; stabilized 2003
Brown Residence	West Coast Cemeteries	333837	1933; moved 1965; front porch enclosed; post 1977; rehabilitated 2001-2002
Cambra Residence	West Coast Cemeteries	341955	1913
Cambra Residence Storage Shed	West Coast Cemeteries	573888	
Kamehameha Street Residence 7	West Coast Cemeteries	55800	1931-1932; repaired 2008
Kamehameha Street Building 9	West Coast Cemeteries	56104	1931-1932
Kamehameha Street Residence 65	West Coast Cemeteries	101952	Circa 1938; moved 1978; rehabilitated 2010
Kamehameha Street Residence 15	West Coast Cemeteries	55726	1936; front porch enclosed 1977
Residence 22	West Coast Cemeteries	55724	By 1938

Building Name	Location	CRIS ID#	Date of Origin
Norbert Palea Residence	West Coast Cemeteries	59951	1936
Chicken Coop	West Coast Cemeteries		1938
Electrical system features	West Coast Cemeteries		By 1969
Cattle guard	West Coast Cemeteries		

Attachment 3

TABLE OF ARCHAEOLOGICAL SURVEYS

Reference	Type of Investigation	General Location	Findings (50-60-03-)
Stokes (1909, 1919)	Heiau survey	island-wide	295: heiau, western slope of Kauhakō Crater, destroyed; 299: Kuahu Heiau, within Kalaupapa Settlement near current location of St. Francis Church, destroyed; 301: heiau, on Bishop Home property, destroyed
McHenry (1937)	Reconnaissance	Kalaupapa Peninsula	Numerous features*; none within project area
Summers (1971)	Literature review	island-wide	292: Kapua Heiau, at Waihānau; 295: heiau, western slope of Kauhakō Crater, destroyed; 299: Kuahu Heiau, within Kalaupapa Settlement near current location of St. Francis Church, destroyed; 301: heiau, on Bishop Home property, destroyed
Barrera (1978)	Excavations	current hospital	0515: pre- and post-Contact deposits
Somers (1985)	Survey	South and east of Kalaupapa Settlement along Damien Road and Pump House Road	Numerous walls, mounds, terraces, and platforms mapped within 100 x 100 m grids*
Athens (1989)	Reconnaissance	west of airport terminal	33 features* including large agricultural enclosures, shelters, house platforms, walls, and cupboards
Ladefoged (1990)	Inventory survey	east and west ends of airport	1801-1802, 1826-1827: remains of agricultural and habitation complexes
Pietrusewsky (1991)	Burial report	Kalaupapa Airport	1850: infant skeletal remains
Neller (1992)	Survey and monitoring	Kamehameha Street (Airport Road) and Kalaupapa Settlement area	A*: rock platform or terrace; B: enclosure (possible heiau); C: rectangular cluster of coconut palms (possible house site); D: cobble concentration; E: charcoal-stained sand; monitoring revealed subsurface deposits and historic artifacts within Kalaupapa Settlement
Goodwin (1994)	Data recovery	airport terminal	1801, 1826, 1827: mid-19th-century farmhouse and associated enclosed fields
Cochrane (2000)	Monitoring	route from the airport to Kalaupapa Settlement	1897: 18 features (piled stones, walls, alignments, a platform, and two enclosures)
Manning and Neller (2005)	Survey	south of Kalaupapa Airport	1900: upright basalt stone, interpreted as Pōhaku o Kāne; 1901: dryland field system; 1902-1918: agricultural complexes, habitations, and burials; 1919: possible heiau; 1920-1923: habitations; 1924: subsurface midden deposit; 1925: possible heiau
Tulchin et al. (2005)	Survey and subsurface testing	airport terminal area	Features B1-B7*: seven stone features interpreted as burial monuments (Features B1-B7), and an upright stone interpreted as a shrine

Reference	Type of Investigation	General Location	Findings (50-60-03-)
			(the latter was recorded by Manning and Neller [2005] as Site 1900)
McCoy et al. (2005)	Testing	Kalaupapa Settlement	Subsurface mixed pre-Contact and post-Contact deposits*
McCoy (2006)	Survey	south of settlement, between electrical corridor and coast	2191-2210: enclosures, terraces, walls; associated with agriculture, ranching, and habitation
Runyon and Hammatt (2007)	Monitoring	Kalaupapa Airport terminal area	None; note that the area had been previously disturbed based on construction fill and the presence of buried utilities
Rieth (2008)	Inventory survey	route along the west and southern boundaries of the airport	27 surface features, most of which were assigned to Site 1897: stone piles, enclosures, terraces, platforms, a remnant wall and alignments
Conners (2011)	Reconnaissance survey	Kalaupapa Settlement	Area 1*: 57 features, including walls, alignments, platforms, concrete pads, enclosures; 21 features, including U-shaped mound, concrete pad, platform, wooden structures; Area 3: 31 features, including rock walls, modified boulder outcrop, rock mounds, concrete pads and other concrete features; Area 4: 11 features, including enclosures and pavements; Area “?”: 19 features, including rock wall and enclosures; features within current project area re-recorded by Chambers and Pacheco (2020)
Naone (2013)	Inventory survey	Kalaupapa Settlement	Area 1*: 26 features; Area 2: 22 features; Area 3: 37 features; Area Q: 28 features (walls, mounds, platforms, foundations); features within current project area re-recorded by Chambers and Pacheco (2020)
Rieth and Tomonari-Tuggle (2013)	Inventory survey	Kalaupapa Pali Trail	2515: 780 features/feature sets related to agriculture, habitation, and ceremony
O’Day et al. (2015)	Monitoring	former Makanalua Bombing Range	166 archeological features and 15 individual artifacts*
Duarte and Rieth (2018)	Inventory survey	Kalaupapa Airport	02574: traditional Hawaiian dryland agricultural and habitation complex
Chambers and Pacheco 2020	Inventory survey	Kalaupapa electrical system (power line corridor)	84 newly identified sites, and 19 sites previously recorded by McCoy (2005), or Somers (1985) were re-located
Chambers and Athens 2020	Inventory survey	Kalaupapa electrical system (road to pump house)	26 newly identified sites: mainly pre-Contact in age and include mounds, enclosures, and terraces thought to have been utilized for agriculture

Attachment 4

Inadvertent Discovery Plan of Action

Kalaupapa National Historical Park Plan of Action For Treatment and Disposition of Cultural Items That May Be Discovered Inadvertently During Activities Related to The Rehabilitation of the Kalaupapa Electrical System

April 3, 2024

Purpose:

This Plan of Action (POA) deals with the inadvertent discovery of cultural items encountered at the Kalaupapa National Historical Park (KALA) while the Rehabilitation of the Kalaupapa Electrical System construction activities from 2024 – 2029. The POA complies with the Archaeological Resources Protection Act (ARPA) (16 U.S.C. 470 et seq.) with its implementing regulations (43 CFR 7) by documenting the following:

- the kinds of objects considered as cultural items under ARPA, and;
- the specific information used to determine custody, and;
- the planned treatment, care and handling of cultural items, and;
- the planned archeological recording of cultural items, and;
- any steps to be followed to contact Native Hawaiian Organizations at the time of excavation or inadvertent discovery of cultural items, and;
- the kind of traditional treatment, if any, to be afforded cultural items, and;
- the nature of reports to be prepared , and;
- the planned disposition of cultural items.

Background:

Kalaupapa National Historical Park (the Park or KALA) was established in 1980 with legislation directing the National Park Service (NPS) to preserve and interpret the Kalaupapa settlement as well as maintain a living community for the Kalaupapa Hansen's Disease (leprosy) patients. Today, an active care home, managed by the State of Hawai'i Department of Health (HDOH), provides medical treatment and, by law, the remaining patients are guaranteed the ability to live in the Settlement for as long as they wish. The current electrical distribution system, originally installed in 1920 and updated in 1969, is owned by State of Hawai'i Department of Health (HDOH), and through a lease agreement and enabling legislation the system is maintained and operated by the NPS. The system is currently outdated, inadequate, does not meet modern safety codes, and creates unsafe, life threatening conditions for residents, NPS staff, and the public. This project will use federal funds to rehabilitate the failing electrical system which constitutes an undertaking under 36 CFR part 800.16 (y).

Numerous archaeological and historic resources are located within the Project Area as it extends throughout the Kalaupapa Settlement and across the wider Makanalua Peninsula. These resources include walls, enclosures, and other above-ground features constructed from locally available, dry-set stone. In addition to above ground and surface resources, archaeological testing throughout the Project Area has revealed the presence of subsurface artifacts and cultural deposits. Both above ground and sub-

surface features may be dated variously to the Historic Period and the Hansens Disease Settlement, as well as to earlier pre-Contact periods of habitation. Across the Project Area, there is also potential to encounter sub-surface human remains and associated materials that may have been interred at any point during the Historic and pre-Contact Periods.

Kinds of objects considered as cultural items under this agreement:

For this POA, cultural items include ARPA (16 U.S.C. 470 et seq.) with its implementing regulations (43 CFR 7) and those objects identified as Native Hawaiian human remains, funerary objects, sacred objects, and objects of cultural patrimony pursuant to NAGPRA and the implementing rules and regulations. The definitions are from regulation 43 CFR 10.2(d).

Procedures for An Inadvertent Discovery:

1. **Stop Work**
Work in the immediate area must stop if potential Native Hawaiian human remains, funerary objects, sacred objects, or objects of cultural patrimony (referred to herein as cultural items) are inadvertently discovered.
2. **Secure and Document the Location**
The project manager and/or park staff must ensure that the remains are left in situ and protect them from further disturbance. If appropriate, they may be stabilized or covered to ensure their protection. If possible, cover them with a natural fiber cloth such as cotton or muslin. No photographs are to be taken.

Document the location, if possible, with a GPS unit. The specific location of the inadvertent discovery shall be withheld from disclosure (with the exception of the Superintendent, Law Enforcement, Cultural Resource staff, and NHO Officials) and protected to the fullest extent by federal law.
3. **Notify Law Enforcement**
Please immediately (within 24 hours) contact Park via the Pacific Area Communication Center at (808) 985-6170.
4. **Notify the Superintendent**
Please immediately (within 24 hours) contact the Superintendent, Nancy Holman, by telephone and provide written confirmation.
5. **Initiate Consultation**
No later than three working days after receipt of the written confirmation of notification, the Superintendent must certify receipt of the notification, further secure cultural items, and notify HI-SHPO and NHO about the inadvertent discovery. The Superintendent will also notify HI-SHPO and NHOs within three business days.

Consultation is initiated with a written notification, which must propose a time and place for meetings or consultation. During consultation, the planned treatment, care, and disposition of the cultural items will be discussed.

Note: The activity in the location that resulted in the discovery may resume thirty days after the Superintendent certifies receipt of the notification if agreed to by all parties.

6. Archeological Recording of Cultural Items

Inadvertently discovered cultural items will be recorded in a descriptive, non-invasive way and will include measurements, type, and morphology. In the event that it becomes necessary to remove the items from the site, the cultural items may be sketched in situ. The location of the site will be thoroughly described, and the location of items will be established using a GPS unit with sub-meter accuracy. This information will be used to submit a State Site Form to the appropriate State Historic Preservation Office. It will also be documented in the NPS Cultural Resources Inventory System (CRIS) database.

7. Planned Disposition of Cultural Items

The preferred treatment option for inadvertent discoveries of human remains and associated funerary objects is in situ preservation if the cultural items are not under imminent or anticipated threat of disturbance. Cultural items left or reburied in situ will remain in the park and will not be repatriated. If left in situ, no disposition takes place, and the requirements of 43 CFR 10.4-6 are fulfilled.

If the safety of the cultural items are threatened or if Native Hawaiian Organizations request that they be moved, then the Superintendent will determine, pursuant to 43 CFR 10.6, which Native Hawaiian Organization will receive custody of the items.

8. Report to be Prepared

An administrative record must document all disposition or repatriation actions. It must include documentation of the human remains, funerary objects, sacred objects, or objects of cultural patrimony under consideration and copies of written correspondence, a log of telephone conversations, documentation of consultation meetings, and copies of agreements between the relevant parties. The original file should be retained by the Park as part of the museum archive collection and the archeological site file. These files should be retained even after the disposition or repatriation. This report will be shared with interested Native Hawaiian Organization as well as with the appropriate State Historic Preservation Office.

Plan of Action Ratification:

This Plan of Action complies with the Archaeological Resources Protection Act

(ARPA) (16 U.S.C. 470 et seq.) with its implementing regulations (43 CFR 7). A copy of this plan will be provided to the Consulting Parties and Signatories of this agreement.

Nancy Holman, Superintendent Kalaupapa National Historical Park

Date

Attachment 5

NHO Consulting Parties List; Updated 01/19/2024.

Name	Organization
Ah Loo, Cariann	Nakupuna Foundation
Ainoa, Vivian	Kamiloloa One Ali'i Homestead Association
Akana, Paula	The Friends of 'Iolani Palace
Alvarez, Keoni Kealoha	Keoni Kealoha Alvarez
Ayau, Edward Halealoha	Hui Iwi Kuamo'o
Barber, Paige Kapiolani	Nanakuli Housing Corporation
Brown, Samson	Au Puni o Hawaii
Buchanan, Lori	`Āina Momona
Burgess, Kau'i N.	Kamehameha Schools
Campbell, 'Olu	Hawaiian Islands Land Trust
Carreira, Shelly	Department of Hawaiian Home Lands (DHHL)
Chang, Dawn	Department of Land & Natural Resources
Chang, Kevin	Kua'āina Ulu 'Auamo
Cheek, H. Kanoekalani	Na Ku'auhau 'o Kahiwakaneikopolei
Cortes-Kaleopaa, Abraham	Hawaiian Kingdom Task Force
Cummings, Jesse	Wai Koa Kaua'i
Cypher, Mahealani	Ko'olau Foundation
Daniels, Sheri-Ann	Papa Ola Lokahi Executive Director
Dedman, Palikapu	Pele Defense Fund
Deitschman, Kirk	Ke Kula Nui O Waimānalo
Dill, Jan E. Hanohano	Partners in Development Foundation; Malama Aina
Downer, Alan	DLNR, State Historic Preservation Division; Administrator & Deputy SHPO
Dudoit, Nicole	Alepa Hou Foundation
Evans, Chelsie	Hawaiian Community Assets, Inc.
Faborito, Lu Ann	Hoolehua Homesteaders Association, Treasurer
Farden, Elena	Native Hawaiian Education Council
Farden, Hailama	Association of Hawaiian Civic Clubs
Faulkner, Kiersten	Historic Hawaii Foundation
Filbert, F. Patrick	Las Vegas Hawaiian Civic Club
Flauaus, Julia	DLNR/SHPD staff-architectural historian
Gumapac-McGuire, Tanya	DLNR/SHPD staff-archeologist
Hacker, Stephanie	DLNR/SHPD staff-archeologist IV
Haliniak-Lloyd, Gayla	Kalama`ula Homesteaders Association
Hikalea, Michael	Pu'uhonua o Wailupe
Hopoi, Tonga	Kamehameha Schools

	Office of Hawaiian Affairs (OHA)
Kippen, Colin	CEO
Brown, Casey	COO
Gutierrez, Keith	Interim Research Director
	Communications Director
Silbanuz, Alice	Community Engagement Director & Interim Advocacy Director
	Compliance Specialist
Poe, Capsun	Compliance & Enforcement Mgr.
	Public Policy Advocate
	Public Policy Advocate
	Land Director
Ferreira, Kamakana	Chief Financial Officer
Markell, Kai	Strategic Mgmt.
McCoy, Michele	
Pisciotta, Kealoha	
Wong, Tim	
Hinck, Ramona	
Hostetter, Carla	
Jackson, `Ānela	`Aha Mālama, Corp.
Johnson, Carol	Kauwahi 'Anaina Hawai'i Hawaiian Civic Club
Johnson, Carol	Mainland Council Association of Hawaiian Civic Clubs
Kahapea-Tanner, Bonnie	Kānehūnāmoku Voyaging Academy
Kamali'i, Na`unanikinau	Kawaileo Law A Limited Liability Law Company
Ka`ahanui, Charlie	Hoolehua Homesteaders Association, President
Kamali'i, Na`unanikinau	Kawaileo Law, LLC
Kana'iaupuni, Shawn	Partners in Development Foundation
Kapahulehua, Kimokeo	Hui O Wa`a Kaulua
Kauhane, Iolani	DLNR/SHPD staff-Maui archeologist HP III
Keli'ikipikāneokolohaka, Roxane	Kia'i Kanaloa
Kelly, Walter	Protect Keopuka Ohana
Kila, Glen	Koa Ike
Kalili, Dre	Association of Hawaiian Civic Clubs
Kalili, Dreanalee	Imua Hawai'i
King, Samuel Wilder II	'Ai Noa Foundation
Kualii, KipuKai	Sovereign Council of Hawaiian Homestead Associations

Lebo, Susan	DLNR/SHPD staff-archeology branch chief
Levy, Kelea	Kanaka Economic Development Alliance
Lewis, Joseph Kūhiō	Council for Native Hawaiian Advancement (CNHA)
Lui, Charlene	Mainland Council Association of Hawaiian Civic Clubs
Luthy, Tamara	DLNR/SHPD staff-ethnographer
McCallister, Andrew	DLNR/SHPD staff-Maui lead archeologist HP IV
McPherson, Nancy	Department of Hawaiian Home Lands (DHHL)-planner, Molokai community liaison
MacDonald, Kainoa	Association of Hawaiians for Homestead Lands
Naehu, Tanya Maile	Hui o Kuapā
Naholowaa, Makalika	Native Hawaiian Legal Corporation
Nekaifes, Maraea	Nekaifes Ohana
Norman, Carolyn Keala	‘Ohana Keaweamahi
O’Connell, Eugene	(The) Makua Group
Opunui, Landon	Nā Pu’uwai
Poepoe, Mahina	Kupeke Ahupua`a; Hui Mālama O Mo`omomi
Purdy, Kammy	Ahupua`a o Moloka`i
Ragsdale, Dennis W.	Kingdom of Hawai`i; Order of Kamehameha I
Richards Jr., William	The Friends of Hokule`a and Hawai`iloa
Ritte, Walter	`Āina Momona
Sakaguchi, Derek	Native Hawaiian Community Development Corporation
Schnackenberg, Cora	Ahonui Homestead Association
Silva, Adrian Nakea	Hui Huliau Inc.
Soong, Melvin	The I Mua Group
Suganuma, L. La`akea	Royal Hawaiian Academy of Traditional Arts; The Mary Kawena Pūku`i Cultural Preservation Society
Trask, Mililani	Na Koa Ikaika Ka Lahui Hawaii
Uyeoka, Kelley	Nohopapa Hawai`i, LLC
Watson, Kali	State of Hawaii Department of Hawaiian Home Lands
Watson, Trisha Kehaulani	`Āina Momona
Wilson, Kilauea	Waimānalo Hawaiian Homes Association
Wise, Taffi	Kanu o ka `Āina Learning `Ohana