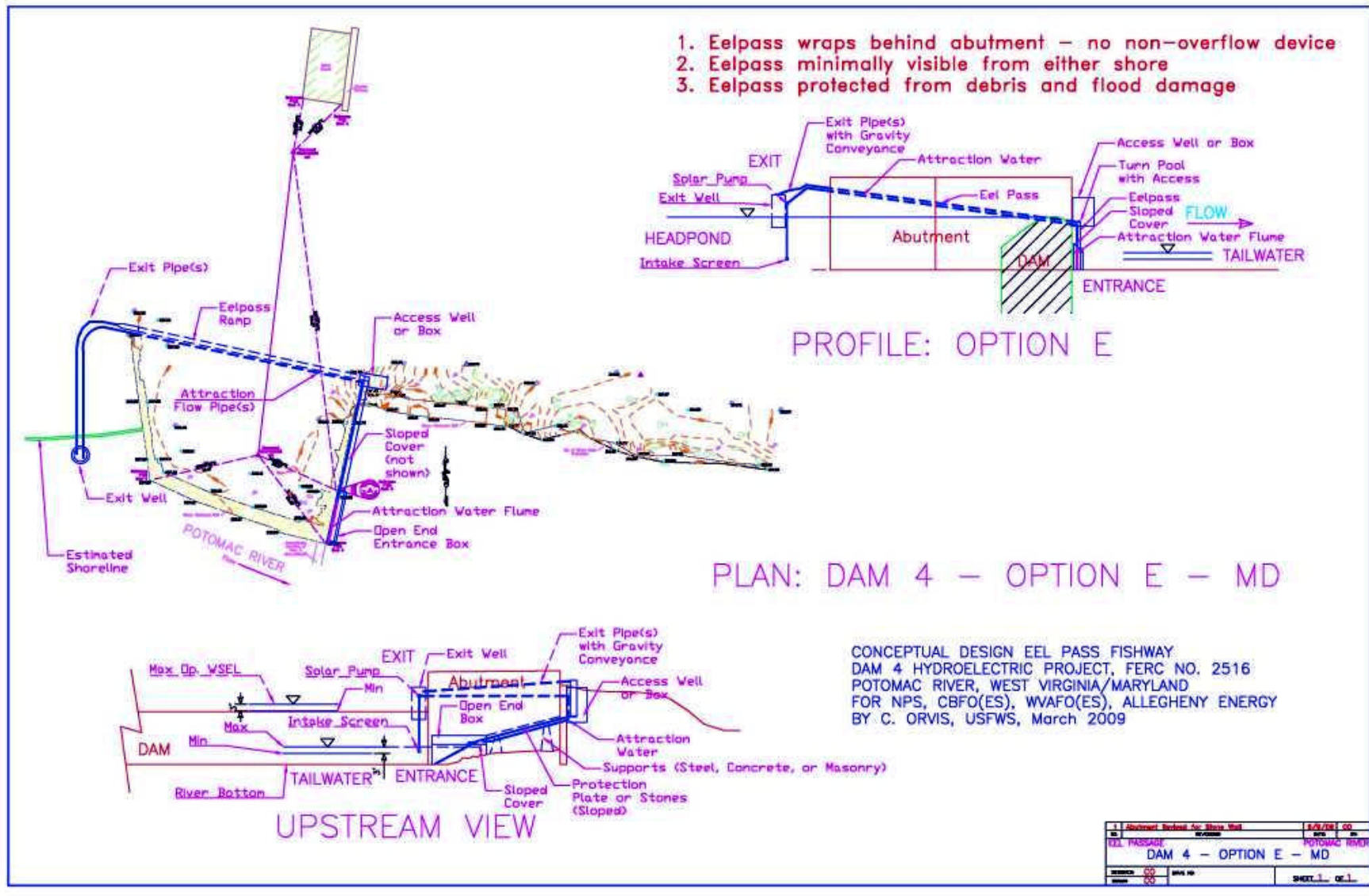


APPENDIX C

CONCEPTUAL DESIGNS

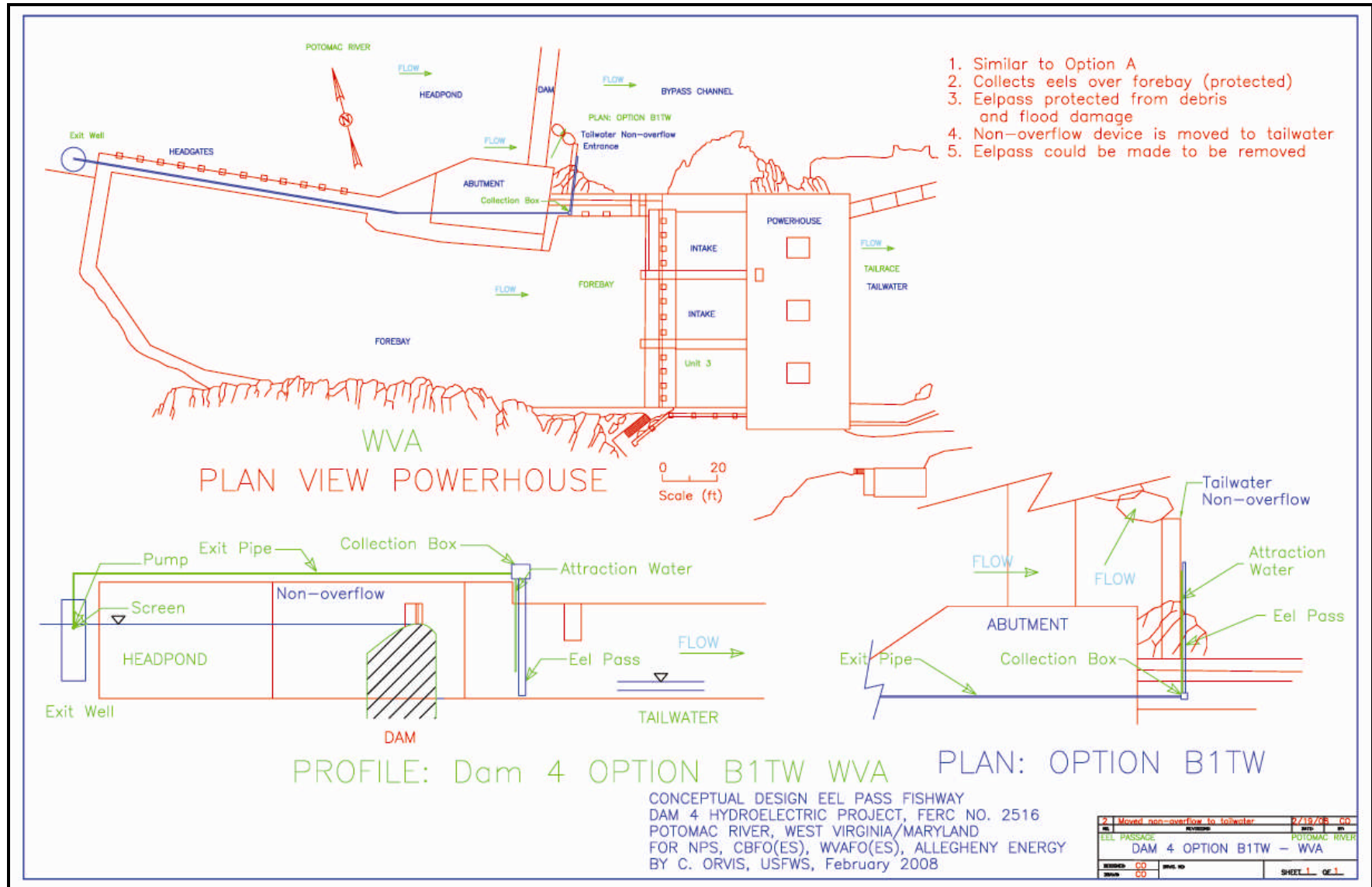
DAM 4 CONCEPTUAL DESIGNS

Alternative B



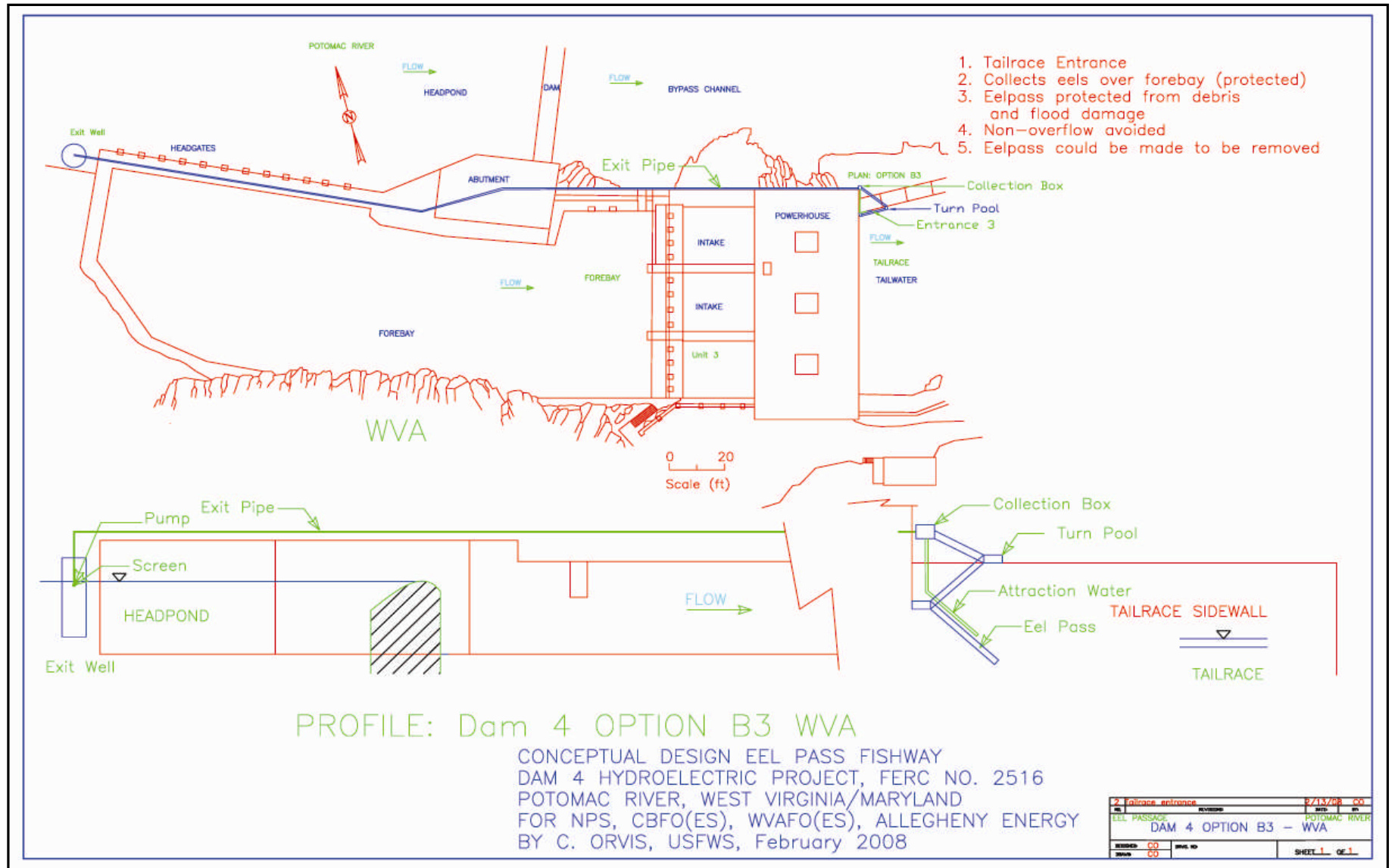
DAM 4 CONCEPTUAL DESIGNS

Alternative C



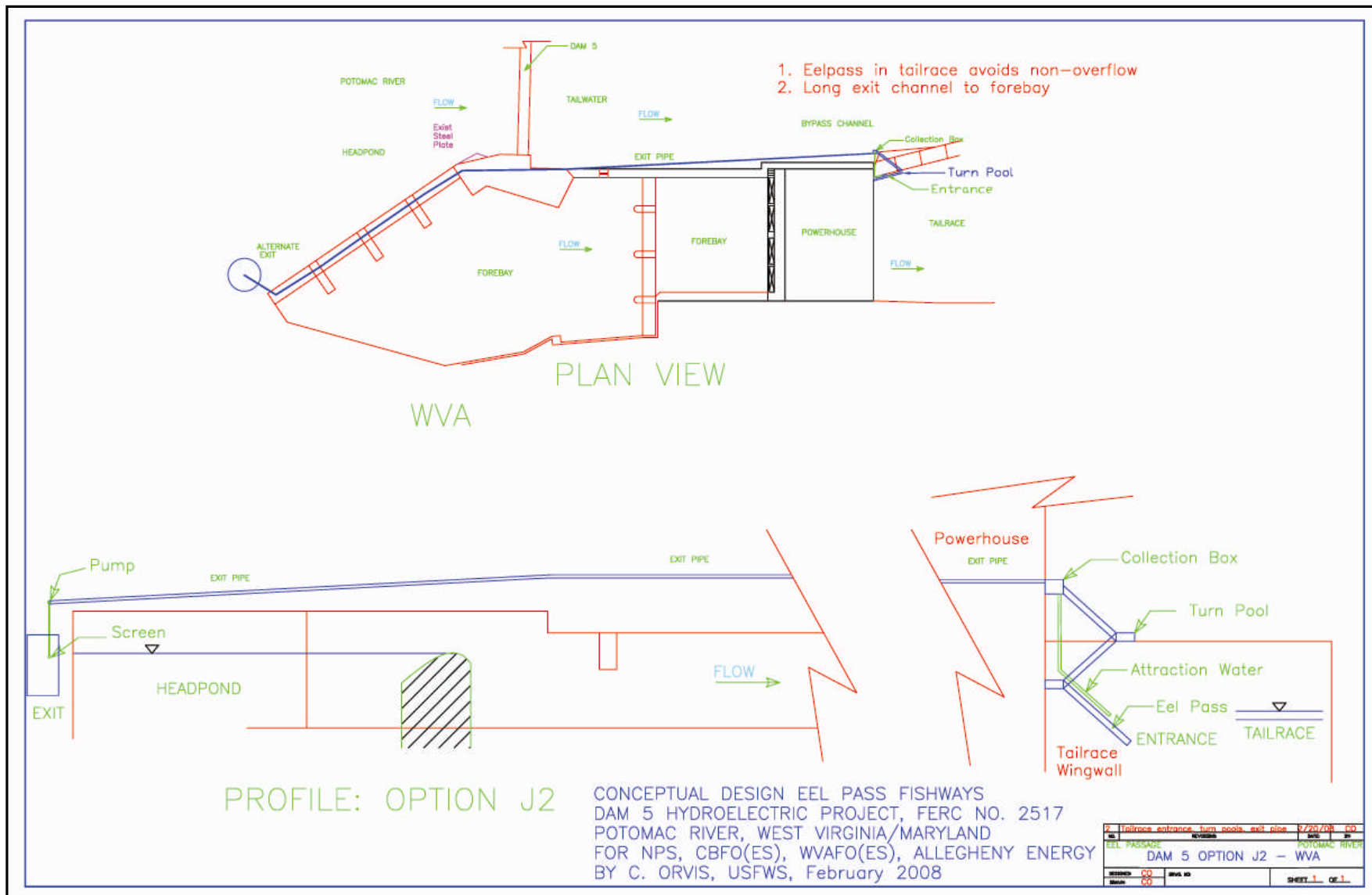
DAM 4 CONCEPTUAL DESIGNS

Alternative D



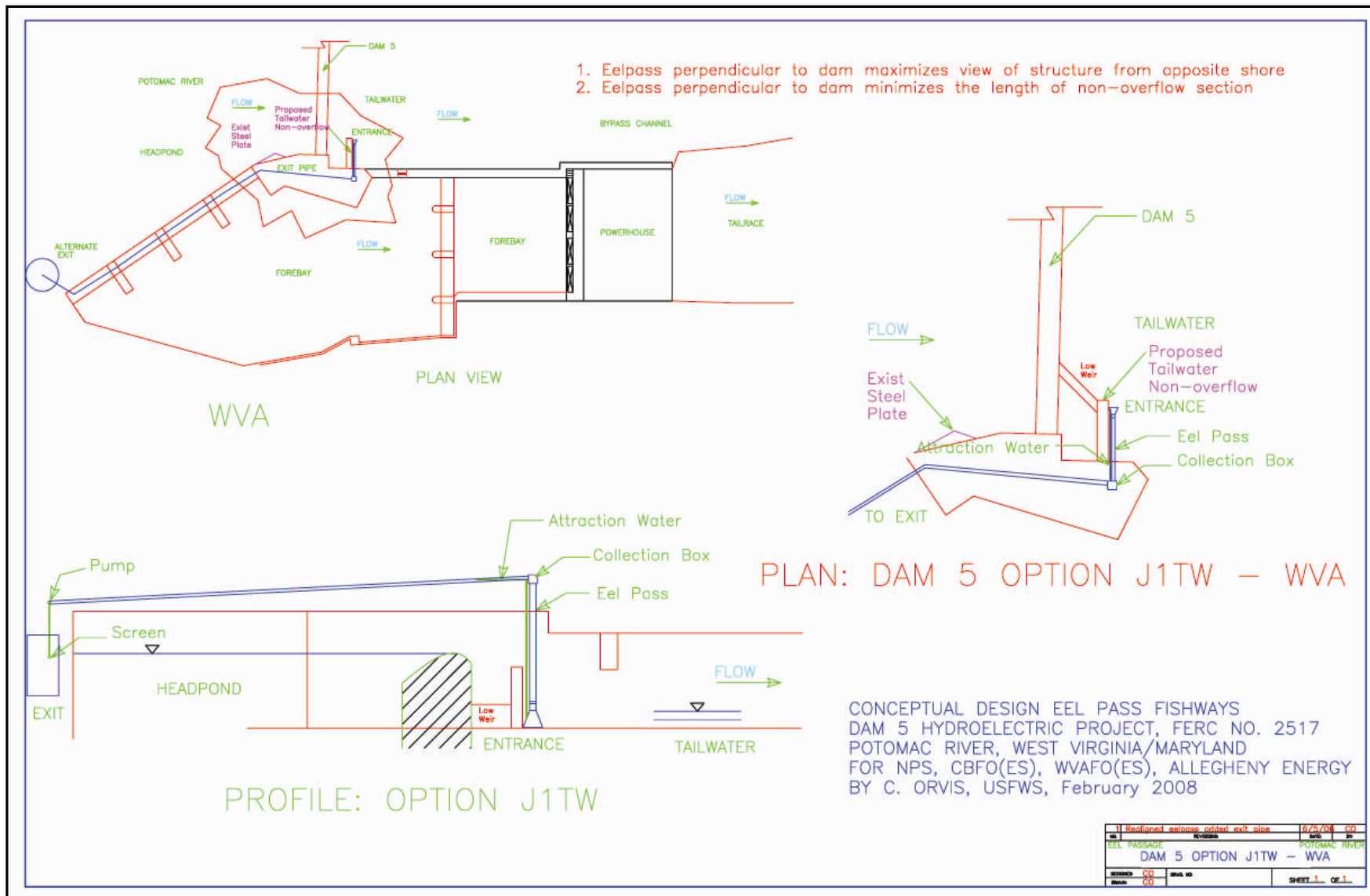
DAM 5 CONCEPTUAL DESIGNS

Alternative B



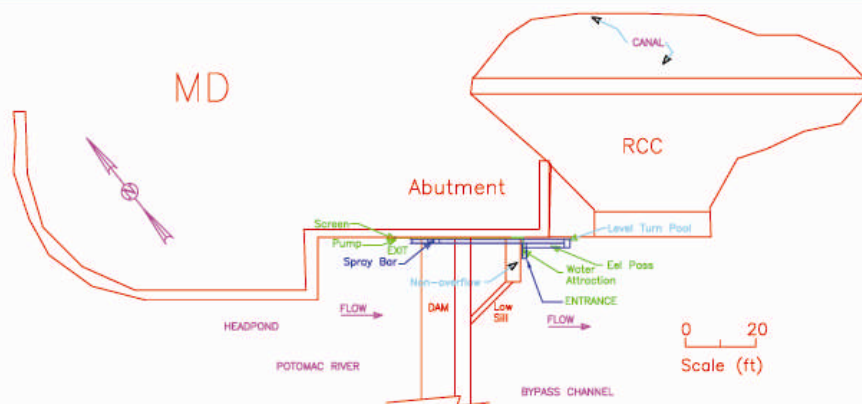
DAM 5 CONCEPTUAL DESIGNS

Alternative C



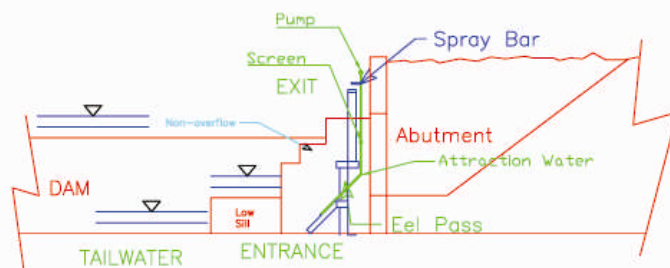
DAM 5 CONCEPTUAL DESIGNS

Alternative D

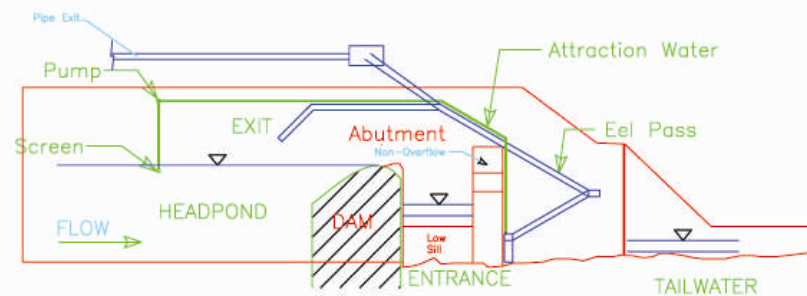


1. Maximum exposure to view from opposite shore
2. Non-overflow section is short in tailwater
3. Could be attached and supported by abutment

PLAN



UPSTREAM VIEW



PROFILE: DAM 5 OPTION L1TW - MD

CONCEPTUAL DESIGN EEL PASS FISHWAY
DAM 5 HYDROELECTRIC PROJECT, FERC NO. 2517
POTOMAC RIVER, WEST VIRGINIA/MARYLAND
FOR NPS, CBFO(ES), WVAFO(ES), ALLEGHENY ENERGY
BY C. ORVIS, USFWS, February 2008

1	Marionette Abutment and RCC	4/25/08	CO
2	EEL PASSAGE	4/25/08	CO
DAM 5 OPTION L1TW - MD			
DESIGNED	CO	BY	MD
DRAWN	CO	BY	MD
		SHEET 1 OF 1	

APPENDIX D

PHOTOGRAPHS



PHOTO #1: VIEW ALONG DAM 4, LOOKING SOUTH TOWARD DAM 4 HYDROELECTRIC PLANT



PHOTO #2: VIEW ALONG DAM 5, LOOKING SOUTH TOWARD DAM 5 HYDROELECTRIC PLANT



PHOTO #3: GUARD LOCK 4, LOOKING NORTHEAST. Canal towpath is on the right in this view.



PHOTO #4: WINCH HOUSE-DAM 4, FACING NORTHEAST FROM DAM NO. 4.



PHOTO #5: LOCK KEEPER'S HOUSE AT GUARD LOCK 5, FACING NORTHWEST.



PHOTO #6. DAM 4 HYDROELECTRIC PLANT, LOOKING SOUTHWEST FROM THE MARYLAND SHORE.



PHOTO #7: VIEW OF DAM 4 HYDROELECTRIC PLANT, CIRCA 1992. View shows south and east facades of powerhouse and exterior transformer bank. Source: Historic American Buildings Survey, Jet Lowe, Photographer.



PHOTO NO. 8: DAM 5 HYDROELECTRIC PLANT. View facing south from Maryland Shore.



PHOTO NO. 9: HISTORICAL VIEW OF DAM 5 HYDROELECTRIC PLANT, CIRCA 1933. View shows powerhouse, forebay and river. Source: Historic American Buildings Survey; photograph provided by Potomac Edison Company.

APPENDIX E

WETLANDS



COMMUNICATIONS RECORD FORM

Person Contacted: Joel Wagner
Date: October 29, 2009
Affiliation: NPS, Natural Resource Program Center
Address: Denver Services Center
Type of Contact: Phone, 303-969-2955
Person Making Contact: Sarah Koser

Communications Summary:

Discussed the eelways project and the wetland delineation that was conducted along the shorelines of the Potomac River. Mr. Wagner agreed that that project could qualify as an accepted action under Procedural Manual #77-1: Wetland Protection, 4.2.1.h - restoration projects. The purpose of the project is restoration of aquatic habitat for eels and as long as the impacts don't total 0.25 acres as stated in h, the project has his approval for being an excepted action. Mr. Wagner stated that an SOF would not be required and that he does not need to review a wetland delineation report of the site, however, the EA must explain why the excepted action fits the project and must abide by conditions set in Appendix 2 (BMPs and conditions) of #77-1. Also, a map must be provided in the EA that overlays the project on wetland areas and the wetland section of the EA must detail the wetland delineation activity and results.