



# Fort Sumter and Fort Moultrie National Historical Park

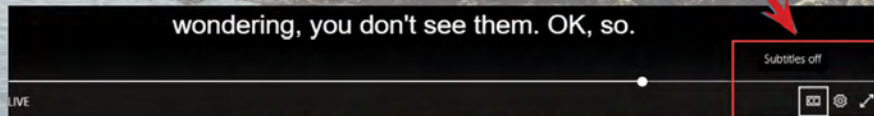
## **Replace and Rehabilitate Docks at Fort Sumter and Fort Moultrie National Historical Park**

Virtual Public Meeting  
January 24, 2024

*Welcome and thank you for  
joining us. We will begin the  
meeting at 6:30pm ET.*

# Teams Live Information

Click on "CC" in the bottom right-hand corner to turn on close captions.



- We are recording this presentation so we can share it online.
- Participants are unable to unmute themselves or turn on video.
- To turn on closed captions, click the icon in the bottom right corner (see figure to the left) or for live captioning open the following link:

<https://www.streamtext.net/player?event=BIS-DOI-NPS-6305011>



# Agenda



Aerial view of Fort Sumter

Webinar Logistics

Welcome

- Superintendent's Welcome
- Introductions

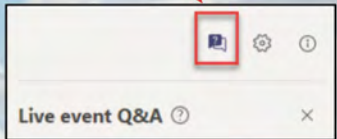
Presentation

- Introduction to Project
- Alternatives
- Project Impacts
- How to Comment

Question and Answer Session

# Submitting Questions

Click here to open the Q&A.



Type your question in the Q&A box.

A screenshot of the Q&A submission form. At the top, there are two profile icons with redacted names. Below them are two text input fields, also with redacted content, followed by two smiley face emojis. The section is titled 'Ask a moderator' with a note: 'Questions won't be visible to everyone until a moderator approves them'. There is a label 'Your name (optional)' next to a small person icon. Below this is a text input field labeled 'Ask a question', which is highlighted with a red box. At the bottom, there is a checkbox labeled 'Post as anonymous' which is checked, and a submit button with a paper plane icon.

- Please type your questions about the project in the Q&A box. We will address them as time allows following the presentation.
- We may not get to all questions. If you would like us to follow-up directly with you, please include your contact information.
- If you have a technical issue, please type it in the Q&A box. Our team will do their best to help.



# Introductions




Entrance into Fort Moultrie

- Tracy Stakely – Superintendent, Fort Sumter and Fort Moultrie National Historical Park
- Krista Pollett – Historian, Fort Sumter and Fort Moultrie National Historical Park

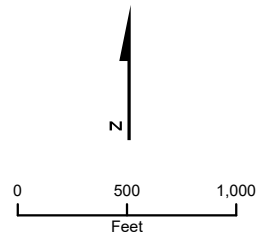
# Project Background



## Legend

 Project Study Area

Map Date: 11/23/2022  
Source: ESRI 2022  
Projection: NAD 1983, State Plane South Carolina, US Feet





# Project Background



A ferry docked at Fort Sumter

## Fort Sumter Dock

- Visitors travel to Fort Sumter on concessionaire operated ferry boats from Liberty Square Visitor Education Center and Patriots Point.
- Visitors disembark at the Fort Sumter dock located on the northwest side of the island.
- The dock also provides administrative access for NPS staff and access to first responder and law enforcement agencies.
- Emergency stabilization repairs were completed in January 2022. New structural deficiencies have resulted following Hurricane Ian in September 2022.
- Without the dock, the public would lose access to the fort, concessioner ferry services would cease operation, and NPS staff would lose access for providing public programming, maintenance, and law enforcement.



# Project Background



Current Fort Moultrie dock

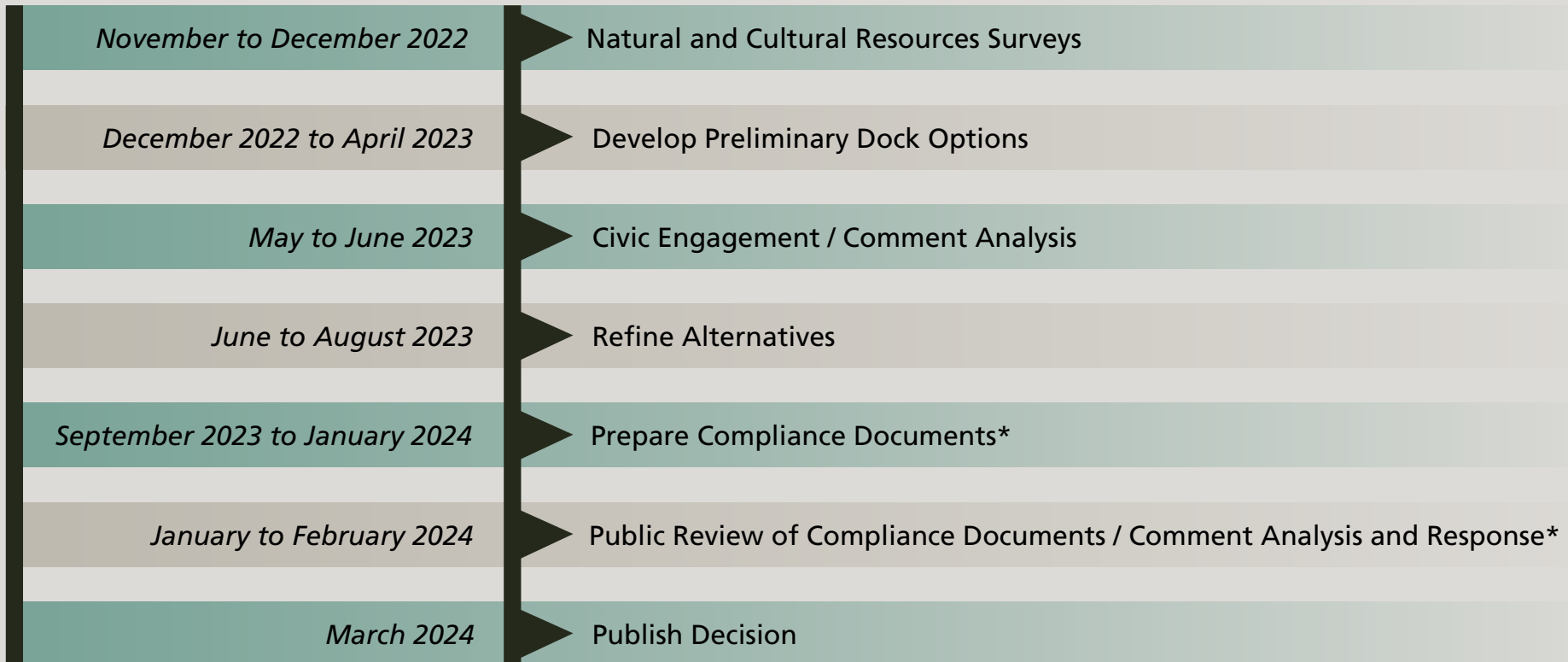
## Fort Moultrie Dock

- The dock is located on the cove side of the park property on Sullivan's Island.
- The dock provides docking and storage location for all NPS boats, supporting parkwide operations, and is partially open to visitors for recreational use.
- The dock provides public access for fishing.
- The current dock configuration results in conflict between visitor use and administrative use.
- The dock is 45 years old and showing advanced signs of deterioration.
- Without the dock, there would be significant impacts to park operations.



# Steps in the Fort Sumter and Fort Moultrie Planning Process

The park has prepared a compliance document to satisfy requirements of the National Environmental Policy Act and the National Historic Preservation Act for the replacement of the Fort Sumter and Fort Moultrie docks.



\* Indicates the current phase of the project

# Alternatives

## *Fort Sumter Dock*

---

### **Alternative 1 (Preferred Alternative)**

A new “T” dock would be constructed in a different footprint to the west of the existing dock. The new dock would extend the entry heading into the fort and would maintain a similar docking procedure. Two bump outs for visitors would be constructed and one bump out would be constructed for a park sign. The existing dock would remain in place and operational during construction.





# Alternatives

## *Fort Sumter Dock*

### Alternative 1 (Preferred Alternative)



# Alternatives

## *Fort Sumter Dock*

---

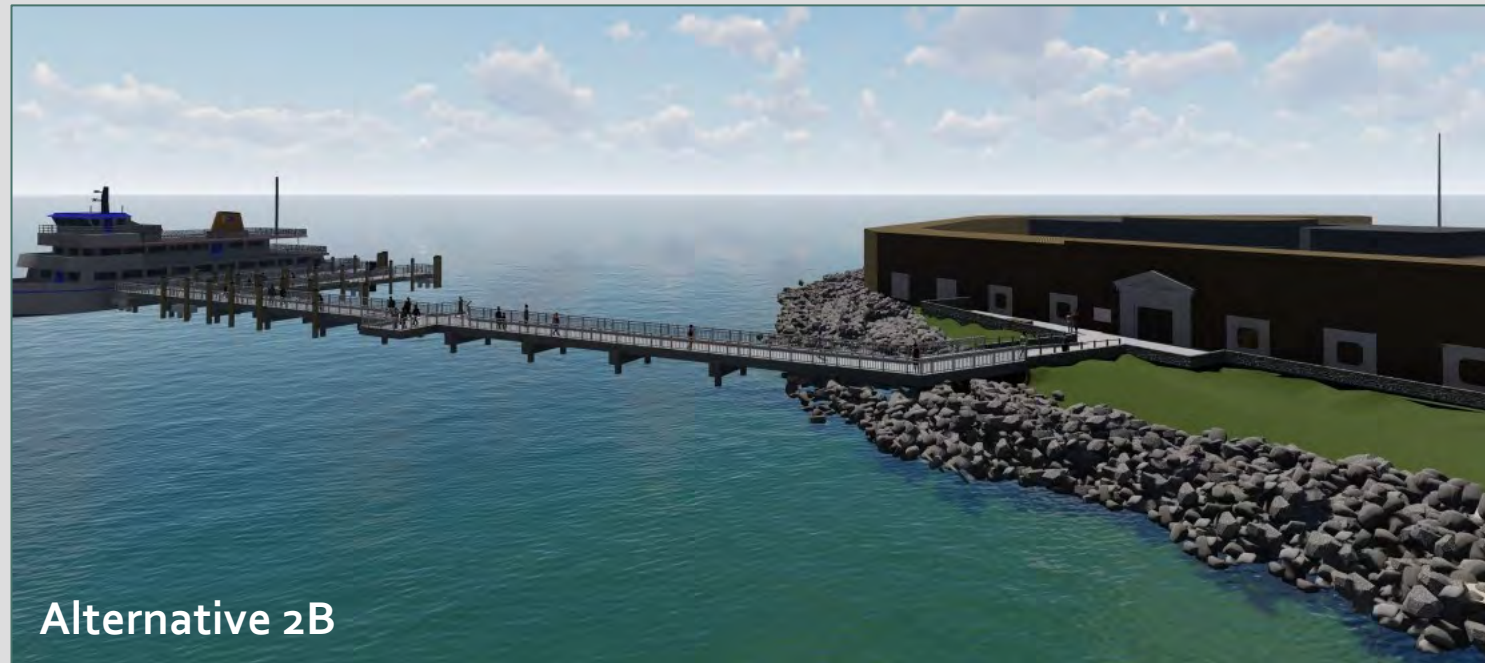
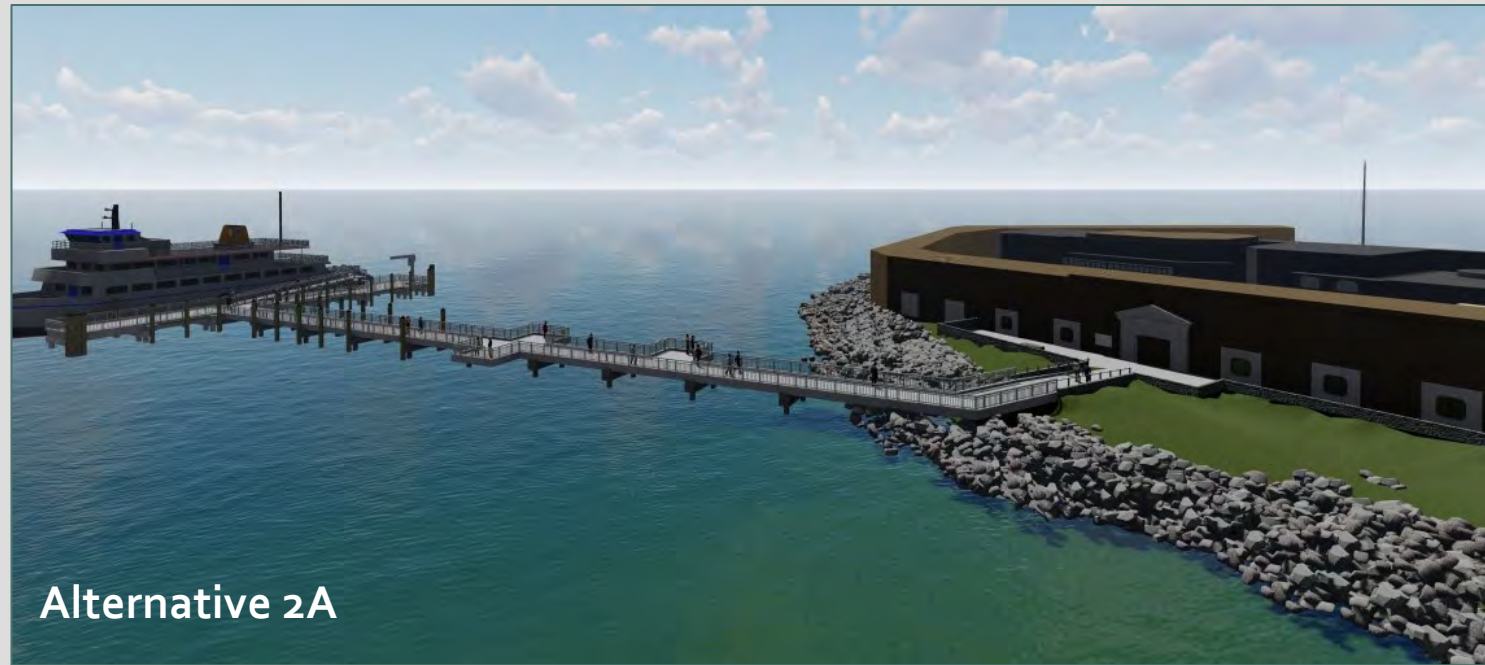
### Alternative 2

A new “T” dock would be rebuilt in the existing footprint. A temporary barge would be located to the west of the existing dock for vessels to berth and unload passengers during construction. The new “T” dock would maintain a similar docking procedure. Two configurations are being considered.

Alternative 2A would replace the existing pierhead in place and construct three bump outs for visitors.

Alternative 2B would remove a portion of the existing pierhead and replace it with two parallel pierheads. Two bump outs for visitors would be constructed.

---





# Alternatives

## *Fort Sumter Dock*

### Alternative 2

A new “T” dock would be rebuilt in the existing footprint. A temporary barge would be located to the west of the existing dock for vessels to berth and unload passengers during construction. The new “T” dock would maintain a similar docking procedure. Two configurations are being considered.

Alternative 2A would replace the existing pierhead in place and construct three bump outs for visitors.

Alternative 2B would remove a portion of the existing pierhead and replace it with two parallel pierheads. Two bump outs for visitors would be constructed.



PLAN - OPTION 2A



PLAN - OPTION 2B

# Alternatives

## *Fort Sumter Dock*

Resource	No Action Impact	Perferred Alternative Impact	Alternative 2 Impact	Resource Protection Measures
Floodplains	<ul style="list-style-type: none"> <li>Minimal obstruction of water flow.</li> <li>Dock failure would result in debris in the floodplain.</li> </ul>	<ul style="list-style-type: none"> <li>Increased number of pilings within floodplain.</li> <li>Barge would be within floodplain.</li> <li>Increased resilience to flooding and storm damage.</li> </ul>	<ul style="list-style-type: none"> <li>Slightly greater temporary impacts due to additional barge's presence within floodplain.</li> </ul>	<ul style="list-style-type: none"> <li>Barges would be moved to more sheltered areas in the event of a storm or expected flooding.</li> </ul>
Wetlands	<ul style="list-style-type: none"> <li>Minimal shading of wetland vegetation.</li> <li>Deterioration or failure of dock and subsequent debris within wetland.</li> </ul>	<ul style="list-style-type: none"> <li>Temporary impacts due to removal of existing pilings.</li> <li>Increased shading of wetlands due to new locations and slightly larger dock.</li> <li>Increased number of pilings within wetlands.</li> </ul>	<ul style="list-style-type: none"> <li>Slightly more shading outside of current footprint.</li> </ul>	<ul style="list-style-type: none"> <li>Construction equipment BMPs.</li> </ul>
Marine/Estuarine Resources	<ul style="list-style-type: none"> <li>Deterioration or failure of dock and subsequent debris within habitat.</li> </ul>	<ul style="list-style-type: none"> <li>Construction noise.</li> <li>Potential for temporary increase in turbidity and water quality degradation due to construction activities.</li> </ul>	<ul style="list-style-type: none"> <li>Same as preferred alternative.</li> </ul>	<ul style="list-style-type: none"> <li>Use of vibratory pile driving.</li> <li>Decibel limits.</li> <li>Use of turbidity booms.</li> <li>Construction equipment BMPs.</li> </ul>
Special-Status Species and Essential Fish Habitat	<ul style="list-style-type: none"> <li>Deterioration or failure of dock and subsequent debris within habitat.</li> </ul>	<ul style="list-style-type: none"> <li>Habitat displacement due to construction noise.</li> <li>Vessel strikes due to increased construction traffic.</li> <li>Not likely to adversely affect sea turtles, manatees, red knot, or piping plover.</li> <li>No effect on pondberry.</li> <li>Potential for temporary increase in turbidity and water quality degradation due to construction activities.</li> </ul>	<ul style="list-style-type: none"> <li>Same as preferred alternative.</li> </ul>	<ul style="list-style-type: none"> <li>Use of vibratory pile driving.</li> <li>Decibel limits.</li> <li>Use of turbidity booms.</li> <li>Species-specific BMPs.</li> <li>Cease operations if protected species observed within 150-feet.</li> </ul>



# Alternatives

## *Fort Sumter Dock*

Resource	No Action Impact	Perferred Alternative Impact	Alternative 2 Impact	Resource Protection Measures
Cultural Landscape	<ul style="list-style-type: none"> <li>Loss of access to the park due to dock failure would remove access for staff to maintain cultural landscape features.</li> </ul>	<ul style="list-style-type: none"> <li>Temporary obstruction of views due to increased construction equipment</li> <li>Minimal impacts to the stone wall due to handrail adjustment and repairs.</li> </ul>	<ul style="list-style-type: none"> <li>Similar impacts to preferred alternative.</li> <li>Additional obstruction of views due to the extra barge.</li> </ul>	<ul style="list-style-type: none"> <li>Any repairs/work involving the stone wall will follow applicable historic preservation guidelines.</li> </ul>
Archeological Resources	<ul style="list-style-type: none"> <li>None – Impacts related to construction activities.</li> </ul>	<ul style="list-style-type: none"> <li>Interference from pile driving or barge spudding.</li> </ul>	<ul style="list-style-type: none"> <li>Same as preferred alternative.</li> </ul>	<ul style="list-style-type: none"> <li>Avoid resources where possible with possible relocation of resources if encountered.</li> </ul>
Visitor Use and Experience	<ul style="list-style-type: none"> <li>Loss of access to the park upon dock failure.</li> <li>Lack of ABA-compliance.</li> </ul>	<ul style="list-style-type: none"> <li>Noise from construction activities.</li> <li>Undesirable views from construction equipment.</li> <li>Minimal impact to visitor access during construction.</li> <li>ABA accessible dock</li> <li>Improved interpretation (via visitor bump outs)</li> <li>Ensure continued visitor access.</li> </ul>	<ul style="list-style-type: none"> <li>Similar to preferred alternative.</li> <li>Temporary barge for loading and unloading passengers would be less accessible than the dock.</li> </ul>	<ul style="list-style-type: none"> <li>Decibel limits on construction equipment</li> </ul>

# Alternatives

## *Fort Moultrie Dock*

---

### **Alternative 1 (Preferred Alternative)**

A new dock would be constructed within the existing footprint and would include a T-shaped pierhead with floating docks on both the upstream and downstream sides of the dock. Visitors would be allowed to fish off the dock. A temporary barge would not be available; therefore, the dock would be closed during construction. The current berthing and loading conditions would remain the same.





# Alternatives

## *Fort Moultrie Dock*

### Alternative 1 (Preferred Alternative)



PLAN - OPTION 1  
SCALE (A)

SCALE (A) 0 10 20 30 40  
SCALE IN FEET



# Alternatives

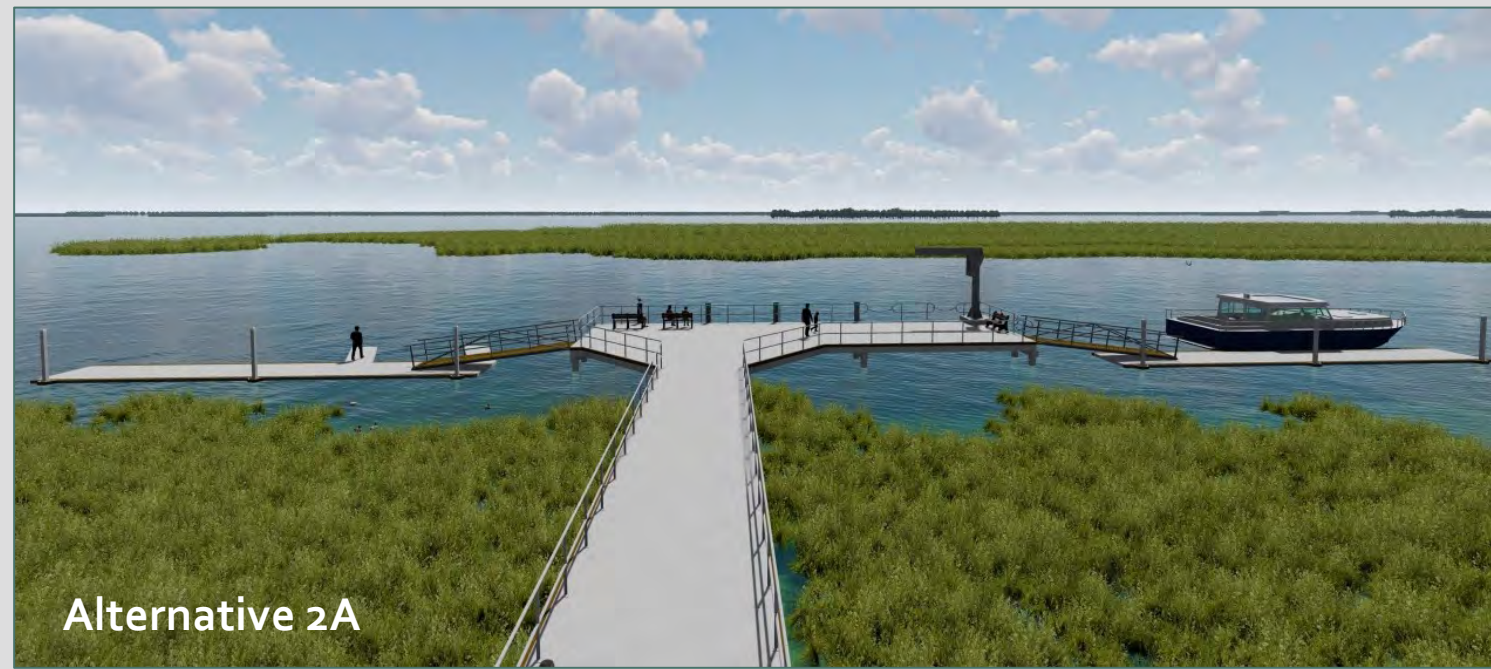
## *Fort Moultrie Dock*

### Alternative 2

A new dock would be constructed within the existing footprint and would include a smaller T-shaped pierhead with floating docks on each side. One of the floating docks would include finger piers to accommodate three park vessels. Visitor access, including fishing, would be allowed on the other floating dock. The existing dock would be closed during construction. Two options are being considered.

Alternative 2A would include finger piers attached to the floating dock to the east.

Alternative 2B would include finger piers attached to the floating dock to the west.





# Alternatives

## *Fort Moultrie Dock*

### Alternative 2

A new dock would be constructed within the existing footprint and would include a smaller T-shaped pierhead with floating docks on each side. One of the floating docks would include finger piers to accommodate three park vessels. Visitor access, including fishing, would be allowed on the other floating dock. The existing dock would be closed during construction. Two options are being considered.

Alternative 2A would include finger piers attached to the floating dock to the west.

Alternative 2B would include finger piers attached to the floating dock to the east.



# Alternatives

## *Fort Moultrie Dock*

### Common to All Action Alternatives: Landside Improvements

- An ABA walkway near the General William Moultrie burial site and picnic table would be constructed.
- Removal and installation of a new concrete pad and benches at the dock entry.
- Four parking stalls and one van parking stall would be re-striped
- Staging would occur within the parking lot.
- Historic structures such as Major General William Moultrie's grave, Toni Morrison Bench, and the existing concrete walkway would be protected in place.
- The historic light pole in the east end of the parking lot would be reinstalled by the NPS post-construction







# Alternatives

## *Fort Moultrie Dock*

Resource	No Action Impact	Perferred Alternative Impact	Alternative 2 Impact	Resource Protection Measures
Floodplains	<ul style="list-style-type: none"> <li>Minimal obstruction of water flow.</li> <li>Dock failure would result in debris in the floodplain.</li> </ul>	<ul style="list-style-type: none"> <li>Increased number of pilings within floodplain.</li> <li>Barge would be within floodplain.</li> <li>Minimal obstruction of water flow.</li> <li>Increased resilience to flooding and storm damage.</li> </ul>	<ul style="list-style-type: none"> <li>Similar to preferred alternative.</li> <li>Finger piers would cause further minimal obstruction of water flow.</li> </ul>	<ul style="list-style-type: none"> <li>Barges would be moved to more sheltered areas in the event of a storm or expected flooding.</li> </ul>
Wetlands	<ul style="list-style-type: none"> <li>Shading of wetland vegetation.</li> <li>Deterioration or failure of dock and subsequent debris within wetland.</li> </ul>	<ul style="list-style-type: none"> <li>Temporary impacts due to removal of existing pilings.</li> <li>Slight increase in shading of wetlands due to the dock.</li> <li>Increased number of pilings within wetlands.</li> </ul>	<ul style="list-style-type: none"> <li>Similar to preferred alternative.</li> <li>Slightly more shading outside of current footprint.</li> </ul>	<ul style="list-style-type: none"> <li>Construction equipment BMPs.</li> </ul>
Marine/Estuarine Resources	<ul style="list-style-type: none"> <li>Deterioration or failure of dock and subsequent debris within habitat.</li> </ul>	<ul style="list-style-type: none"> <li>Construction noise.</li> <li>Potential for turbidity or water quality degradation due to construction activities.</li> </ul>	<ul style="list-style-type: none"> <li>Same as preferred alternative.</li> </ul>	<ul style="list-style-type: none"> <li>Use of vibratory pile driving.</li> <li>Decibel limits.</li> <li>Use of turbidity booms.</li> <li>Construction equipment BMPs.</li> </ul>
Special-Status Species and Essential Fish Habitat	<ul style="list-style-type: none"> <li>Deterioration or failure of dock and subsequent debris within habitat.</li> </ul>	<ul style="list-style-type: none"> <li>Habitat displacement due to construction noise.</li> <li>Vessel strikes due to increased construction traffic.</li> <li>Not likely to adversely affect sea turtles, manatees, red knot, or piping plover.</li> <li>No effect on pondberry.</li> <li>Potential for turbidity or water quality degradation due to construction activities.</li> </ul>	<ul style="list-style-type: none"> <li>Same as preferred alternative.</li> </ul>	<ul style="list-style-type: none"> <li>Use of vibratory pile driving.</li> <li>Decibel limits.</li> <li>Use of turbidity booms.</li> <li>Species-specific BMPs.</li> <li>Cease operations if protected species observed within 150-feet.</li> </ul>



# Alternatives

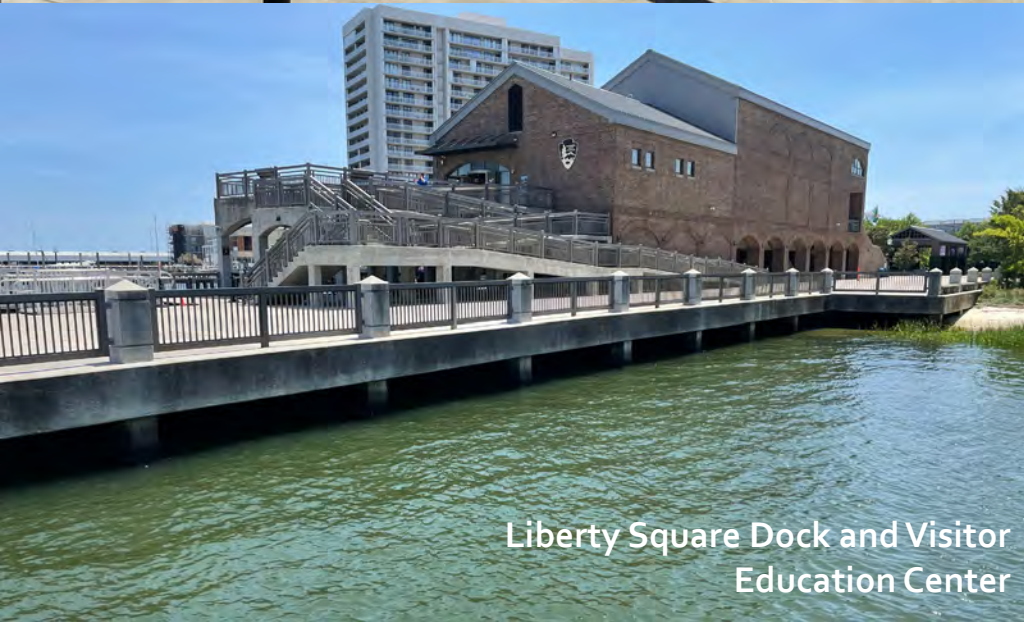
## *Fort Moultrie Dock*

Resource	No Action Impact	Perferred Alternative Impact	Alternative 2 Impact	Resource Protection Measures
Cultural Landscape	<ul style="list-style-type: none"> <li>Loss of vessel access to the park due to dock failure would restrict access for staff to maintain cultural landscape features.</li> </ul>	<ul style="list-style-type: none"> <li>Temporary obstruction of views due to increased construction equipment</li> </ul>	<ul style="list-style-type: none"> <li>Same as preferred alternative.</li> </ul>	<ul style="list-style-type: none"> <li>General William Moultrie Grave will be protected in place.</li> </ul>
Archeological Resources	<ul style="list-style-type: none"> <li>None – Impacts related to construction activities.</li> </ul>	<ul style="list-style-type: none"> <li>Landside work is not expected to interfere with archeological resources</li> </ul>	<ul style="list-style-type: none"> <li>Same as preferred alternative.</li> </ul>	<ul style="list-style-type: none"> <li>Inadvertent discovery protocols will be followed in the event resources are encountered.</li> </ul>
Visitor Use and Experience	<ul style="list-style-type: none"> <li>Loss of vessel access to the park due to dock failure would restrict access for staff to maintain park features important to visitor use and experience.</li> <li>Continued conflict between recreational use and park administration.</li> <li>Lack of ABA-compliance.</li> </ul>	<ul style="list-style-type: none"> <li>Noise from construction activities.</li> <li>Undesirable views from construction equipment.</li> <li>No access to the dock during construction.</li> <li>ABA accessible dock</li> <li>Ensure continued visitor access.</li> <li>Reduced conflict between recreational use and park administration.</li> <li>Provides landside improvements.</li> </ul>	<ul style="list-style-type: none"> <li>Same as preferred alternative.</li> </ul>	<ul style="list-style-type: none"> <li>Decibel limits on construction equipment</li> </ul>

# Project Background



Ferry Docking at Liberty Square



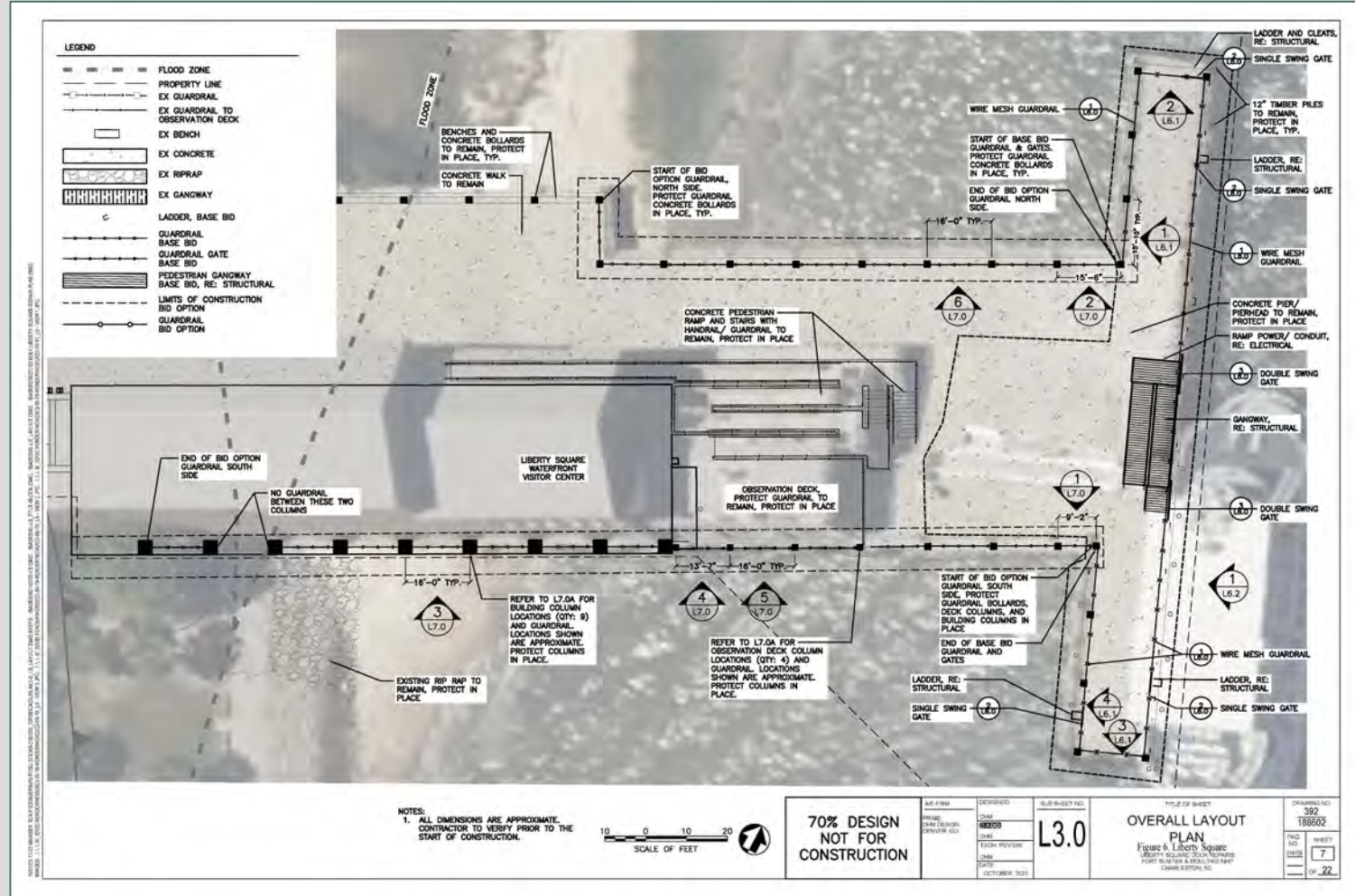
Liberty Square Dock and Visitor Education Center

## Liberty Square Dock

- The Liberty Square is the location of the park's primary visitor center. The dock provides public ferry access from downtown Charleston to Fort Sumter.
- To board the ferry, visitors queue on the dock and utilize a ramp system. This system improves accessibility, but use of the ramp can vary based on tides and adverse conditions.
- The current location of the ramp system and visitor queue limits access to the south side of the pier.
- Reconfiguration of the ramp system, along with various electrical and plumbing upgrades, will improve safety and accessibility, and enhance visitor experience and park operations.
- A categorical exclusion is being considered per the National Environmental Policy Act.



The gangway ramp would be moved from its current position in the middle of the pierhead and turned ninety degrees clockwise to the end of the pierhead. This would make both ends of the pier available for visitor access and provide two points for ferry docking depending on the tide and loading heights. These changes would improve visitor experience and flexibility in ferry onboarding and offloading.



# How to Comment

*Please share your comment no later than*

***February 15, 2024***



Park sign at Fort Sumter

## **Please submit your written comments.**

Public participation is an important element of the planning process. We invite you to review the Draft Environmental Assessment and comment on this project during the 30-day public review period.

- You can find more information and submit your comments about the **Fort Sumter and Fort Moultrie Docks** online at:
  - <https://parkplanning.nps.gov/SumterMoultrieDocks>
- You can find more information and submit your comments about the **Liberty Square Dock** online at:
  - <https://parkplanning.nps.gov/LibertySquareDock>

Comments can also be mailed to:

Fort Sumter and Fort Moultrie National Historical Park Dock Replacement

ATTN: Krista Pollett

1214 Middle Street, Sullivan's Island, SC 29482



# Questions & Answers

**Please submit your questions via the Q&A Box.**



Breakwater at Fort Sumter



# How to Comment

*Please share your comment no later than*

***February 15, 2024***



Park sign at Fort Sumter

## **Please submit your written comments.**

Public participation is an important element of the planning process. We invite you to review the Draft Environmental Assessment and comment on this project during the 30-day public review period.

- You can find more information and submit your comments about the **Fort Sumter and Fort Moultrie Docks** online at:
  - <https://parkplanning.nps.gov/SumterMoultrieDocks>
- You can find more information and submit your comments about the **Liberty Square Dock** online at:
  - <https://parkplanning.nps.gov/LibertySquareDock>

Comments can also be mailed to:

Fort Sumter and Fort Moultrie National Historical Park Dock Replacement

ATTN: Krista Pollett

1214 Middle Street, Sullivan's Island, SC 29482