



Lake Roosevelt National Recreation Area

Replace Houseboat Dock at Keller Ferry

Civic Engagement

Call in Number for Audio: 202-640-1187, 924442518#

Teams Meeting ID: 252 718 074 863

Teams Passcode: dH76e3



December 19, 2023

Welcome



Lake Roosevelt National Recreation Area

Meeting Purpose

- Share project background and context
- Share project goals and priorities
- Initial opportunity to ask questions and provide feedback (Q&A)
- Gather information for future National Environmental Policy Act (NEPA) analysis and National Historic Preservation Act (NHPA)

Meeting Guidelines



Keller Ferry Marina

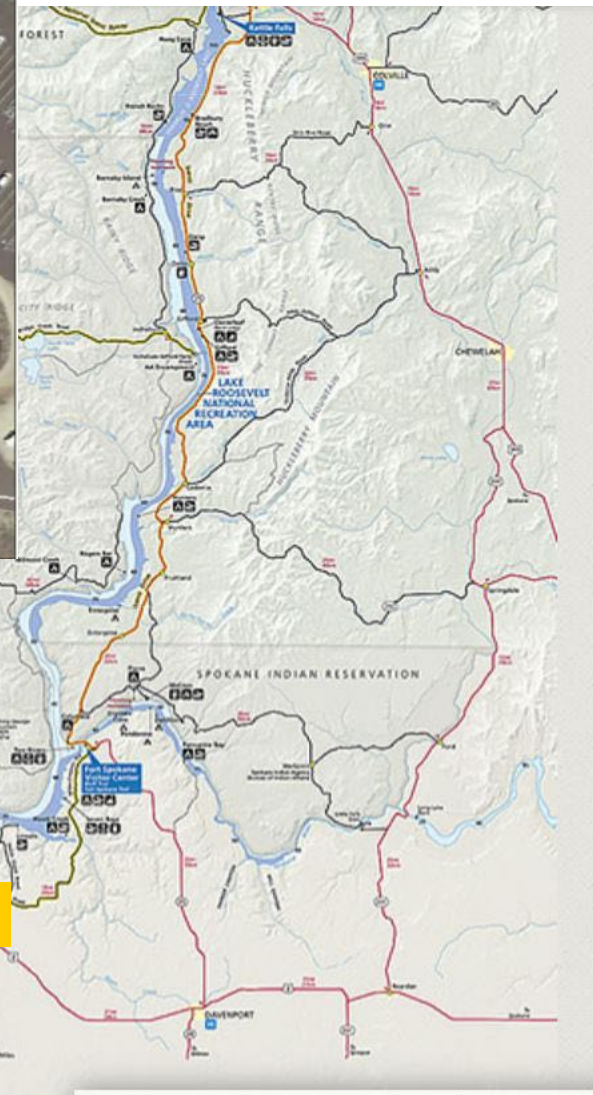
- Questions will be addressed following this brief presentation
- Add questions in chat function at anytime
- Additional comments and questions may be submitted through the Planning, Environment & Public Comment (PEPC) website:

<https://parkplanning.nps.gov/kellerferrymarina>

Previous Facilities



**Keller Ferry Marina -
2013**



Structural Deficiencies

After a storm event, the Keller Ferry houseboat dock developed structural deficiencies.

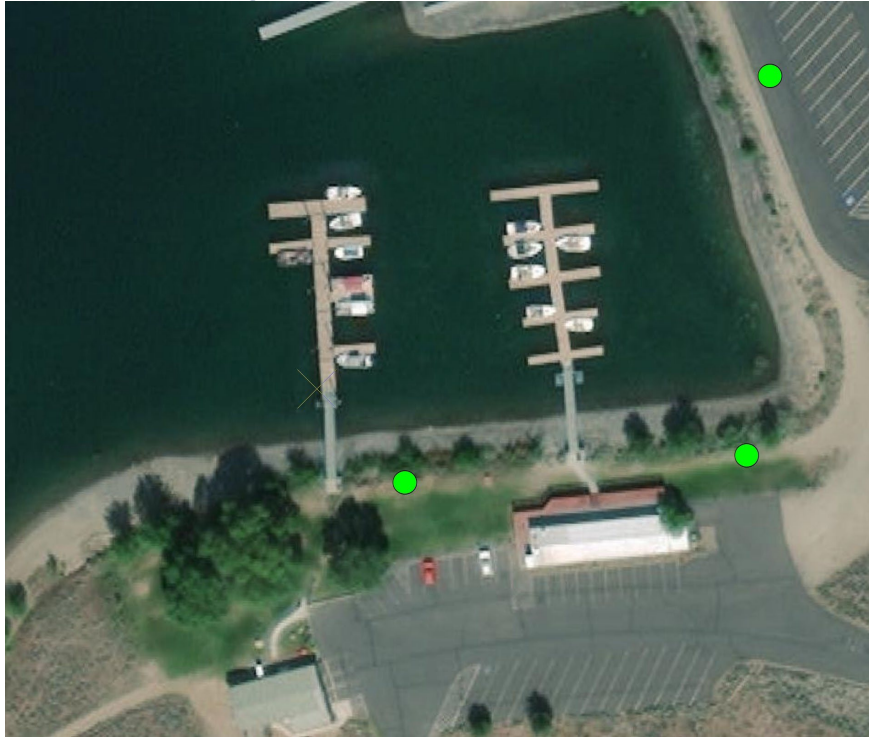


Failed connection at main truss.



Failed connection to main walkway at end of finger float.

Project Area



Keller Ferry docks – full pool.

Keller Ferry docks during drawdown.



Existing Docks



New fuel dock installed in 2021.

Existing docks are 30+ years old with timber frame construction.



Condition of Existing Docks



Easternmost dock.



Second dock.

Project Goals & Priorities

Purpose

This project will focus on needed improvements to Keller Ferry Marina docks, including:

- Demolishing two existing docks
- Replacing the docks with a new dock system
- Grading the bottom of the marina

Need

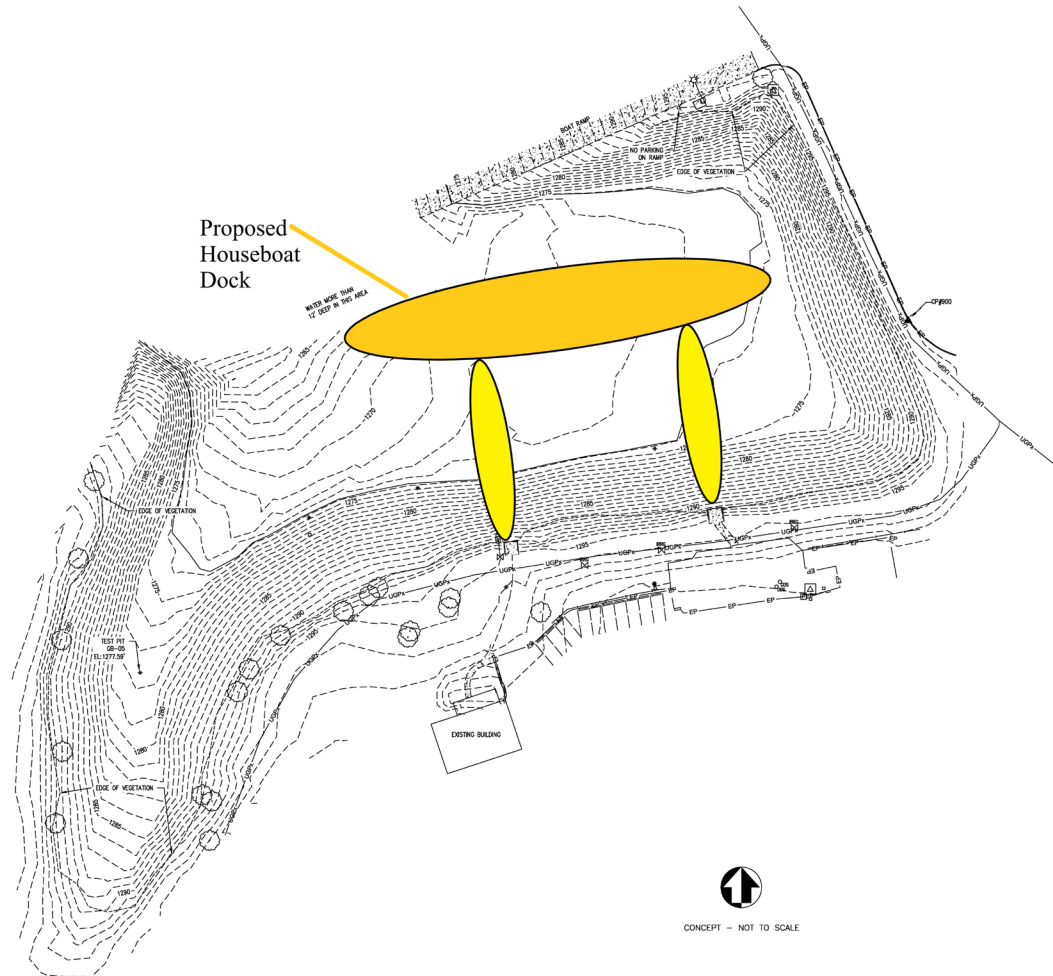
- This project would improve NPS compliance with the current concession contract; create safer visitor conditions on the lake by decreasing operational congestion at Seven Bays Marina, both in the water and on land; replace outdated docks at Keller Ferry Marina; improve accessibility for visitors; and make houseboat rental more accessible to the public.

Proposed Improvement Project

Below is a general list of anticipated improvements that would be included in the new dock system. The design is intended to be a modular system that can be adapted to changes in usage in the future.

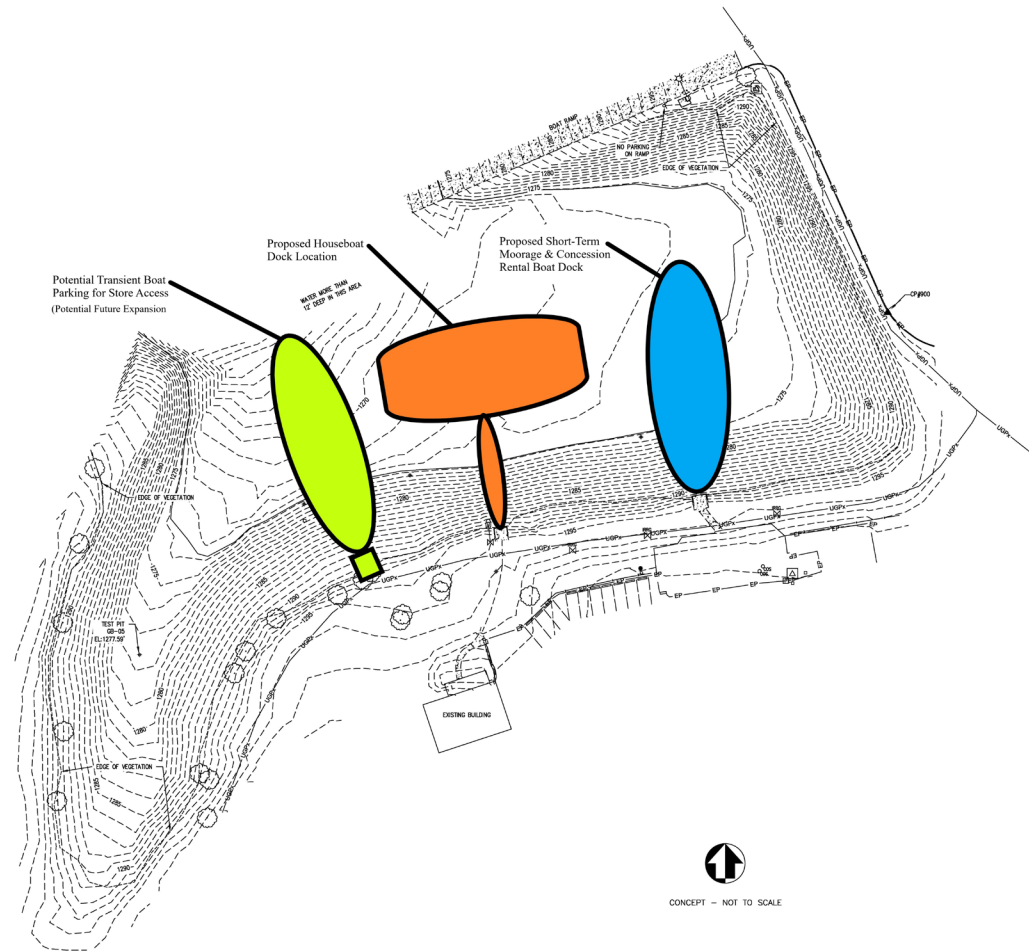
- houseboat slips
- potential short-term mooring slips
- potential transient mooring slips (future expansion)
- New electrical connections
- Pole-mounted lights
- Potable water connections
- Galvanized steel frame, composite dock decking (or equivalent)
- Fully encapsulated polystyrene flotation units
- Modular dock system with piling support

Potential Layout Conceptual Drawings 1



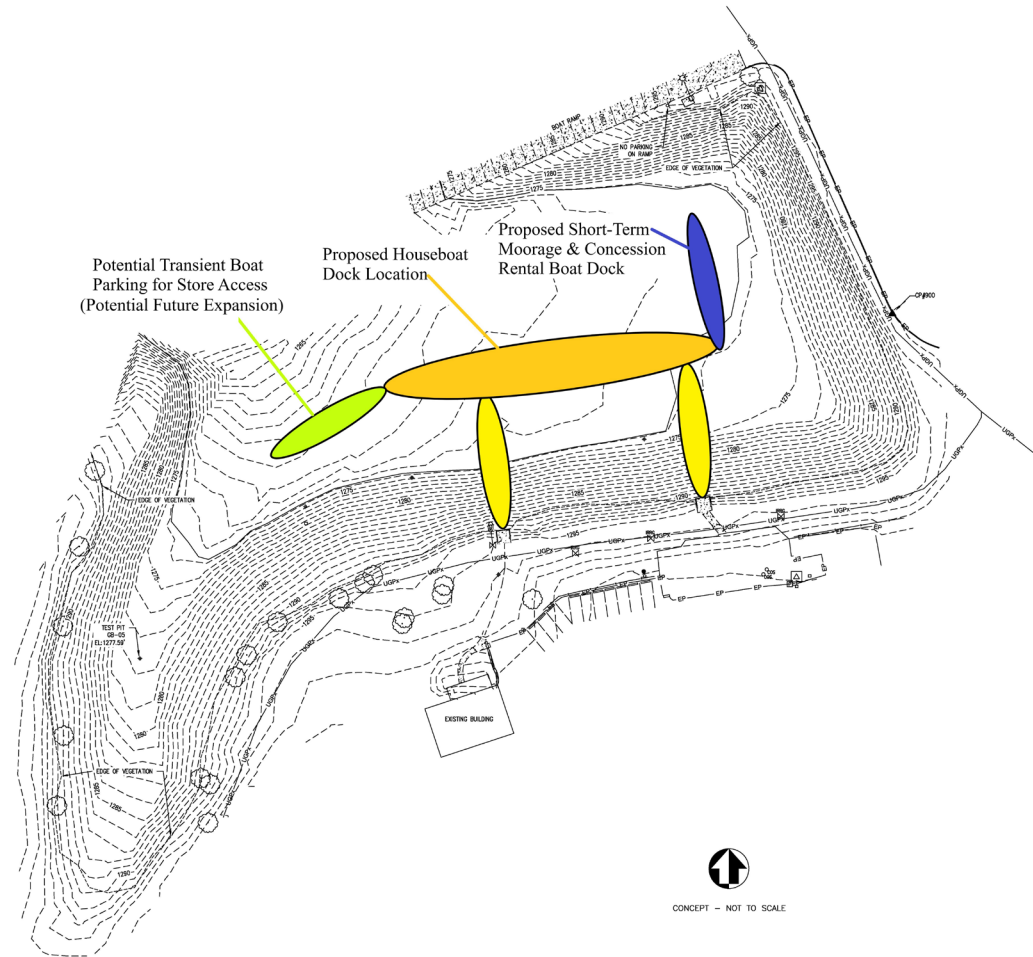
This is one potential layout for the new dock system.

Potential Layout Conceptual Drawings 2



This is one potential layout for the new dock system.

Potential Layout Conceptual Drawings 3



This is one potential layout for the new dock system.

National Environmental Policy Act (NEPA)

The National Environmental Policy Act (NEPA) of 1969 is a national policy for protecting the environment and ensuring informed decision-making.

NEPA requires federal agencies to

- Analyze the environmental impacts of federal actions
- Engage the public in the decision-making process

Following the civic engagement period, your input, along with data gathering and facilities assessments, will be used to inform the design of infrastructure improvements and documented in the Environmental Assessment (EA). The EA is anticipated for review in spring 2024.

National Historic Preservation Act (NHPA)

Section 106 of the National Historic Preservation Act (NHPA) of 1966 established a process to protect cultural resources.

NHPA requires federal agencies to

- Consider and determine the direct and indirect effects of a proposed undertaking on historic properties.
- Consult with State Historic Preservation Officers (SHPOs), Tribal Governments, and other consulting parties.
- Avoid, resolve, or mitigate adverse effects to historic properties.

The goal is to minimize potential harm and damage to historic properties.

Impact Topics

The Environmental Assessment will provide a detailed analysis on the affected environment. Topics for analysis may include:

- Species of special concern
- Fish and wildlife
- Water quality
- Human health and safety
- Visitor experience
- Soils



- What other topics should we consider? Add it to your comments!

How to Comment

- Comments must be submitted online or postmarked by January 31, 2024, to receive consideration.
- Submit online comments to:

<https://parkplanning.nps.gov/kellerferrymarina>

- Mail written comments to:

Superintendent

Attn: Replace Houseboat Dock at Keller Ferry

Lake Roosevelt National Recreation Area

1008 Crest Drive, Coulee Dam, WA 99116

You may also scan here to provide written comments:



Project Activities and Timeframe

Current activities

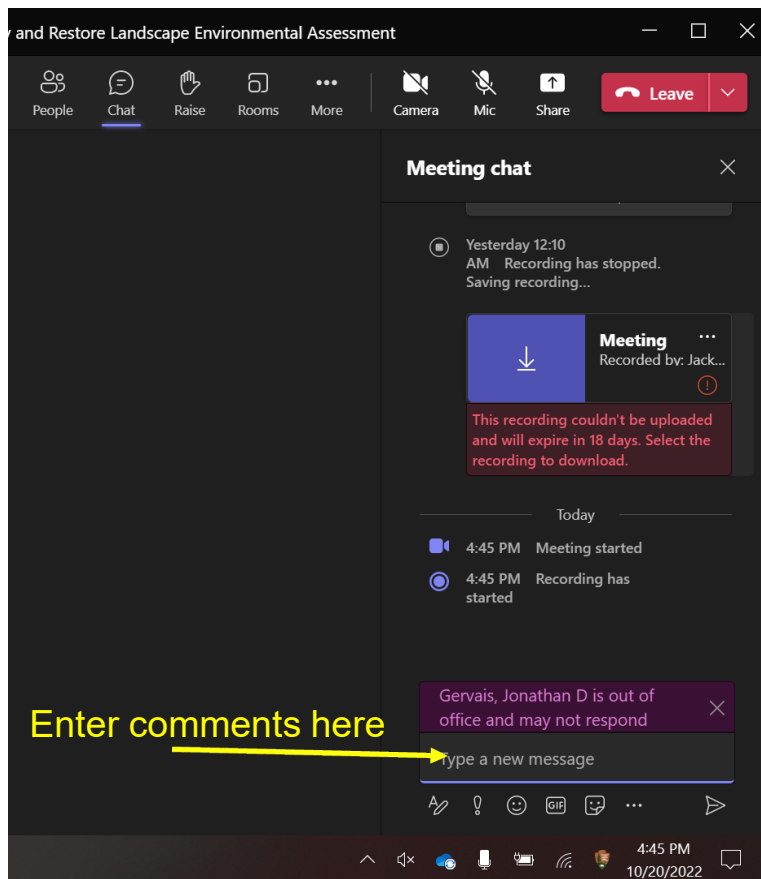
- Civic engagement period December 18, 2023, through January 31, 2024
- Data gathering through review of previous reports and studies

Upcoming project activities

- Review public comments and finalize alternatives
- EA available for public to review and comment Spring 2024
- Final designs
- Construction planned for Spring 2025 or 2026

Questions?

Please enter questions in the chat for the moderator to read



Additional comments and questions may be submitted through the Planning, Environment & Public Comment (PEPC) website:
https://parkplanning.nps.gov/kellerferry_marina

You may also scan here to provide written comments:



THANK YOU!

