



## Errata Sheet

### **Ozark National Scenic Riverways General Management Plan/ Environmental Impact Statement (GMP/EIS)**

After analyzing the public comments received in early 2022 for the changes to motorboat rules within Ozark National Scenic Riverways proposed in the 2015 GMP/EIS, the park management team has determined that a change to the proposed regulation is warranted. The change would modify the horsepower (HP) limit between the lower end of the Van Buren Gap to the Big Spring Boat Ramp from 60 HP to 150 HP. With this change, the HP limit on the Current River between the lower end of the Van Buren Gap to the park's southern boundary will be 150 HP. This will make the area more consistent and less confusing for visitors, more enforceable from a law enforcement perspective, and would relieve some parking pressure on the Big Spring boat ramp.

This modification to the special regulations governing the use of motorized vessels within Ozark National Scenic Riverways also requires an amendment to the park's 2015 Final GMP/EIS and Record of Decision. The Categorical Exclusion Documentation Form is included below.

In the following citations, the underlined information is inserted, struck-out information is removed. The GMP/EIS will be amended as follows:

The following information on page 42 has been modified as shown:

Pursue a rule-making to establish the use of motorboats equipped with 150 hp or less between ~~Big Spring~~ the lower end of the Van Buren Gap and the southern boundary of the park.

The following information on page 51 has been modified as shown:

Rule making would also be pursued to establish 150 hp limit from ~~Big Spring~~ the lower end of the Van Buren Gap to the southern boundary of the park for alternative B.

The following information on page 52 has been modified as shown in the attached "Table 4. Motorboat Horsepower (HP) Limits By Alternative":

Under Alternative B, the table has been updated to change the horsepower limit between Van Buren and Big Spring from 60/40 hp to 150 hp.

The following information on page 79 has been modified as shown in attached zoning map "Alternative B: Preferred Alternative":

Map has been modified to remove "40 HP at Powerhead Year Round (60 HP with Jet Motors)" designated between Van Buren Big Spring. "150 HP at Powerhead Year Round" has been expanded from the lower end of the gap at Van Buren to the park's southern boundary.

The following information on page 131, in "Table 13. Summary of Key Differences Among the Alternatives" under Alternative B has been modified as shown:

Rule making would also be pursued to establish a 150 hp limit from ~~Big Spring~~ the lower end of the Van Buren Gap to the southern boundary of the park.

The following information on page 309 has been modified as shown:

Lower Current River: Maximum 150 hp would be allowed year-round from ~~Big Spring~~ the lower end of the Van Buren Gap south to southern boundary, reduced from the existing unlimited horsepower regulation.

The following information on page 376 has been modified as shown:

Rule making would also be pursued to establish a 150 hp limit from ~~Big Spring~~ the lower end of the Van Buren Gap to the southern boundary of the park.

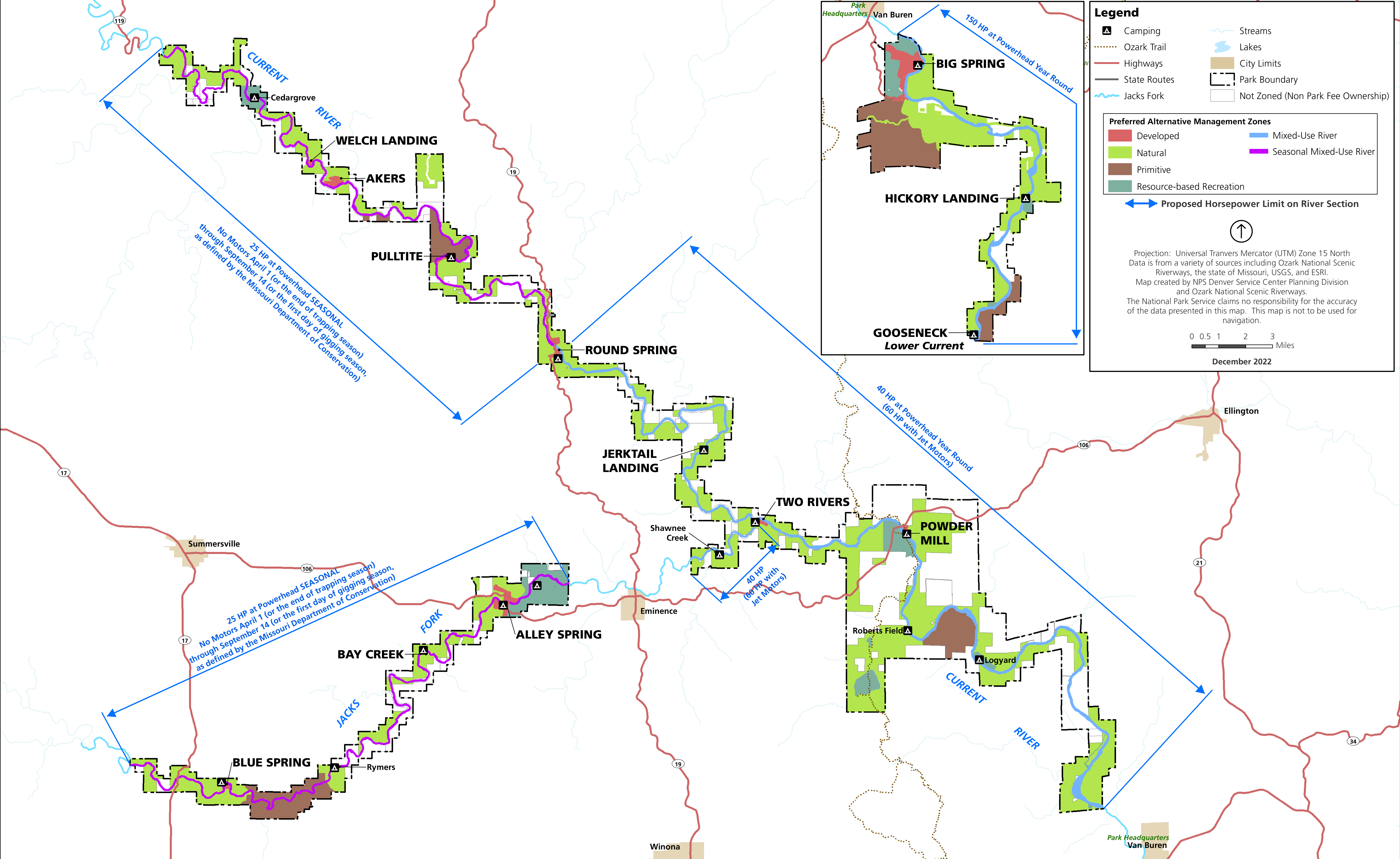
TABLE 4. MOTORBOAT HORSEPOWER (HP) LIMITS BY ALTERNATIVE

		No-action alternative		Alternative A		Alternative B (NPS preferred)		Alternative C	
		Peak season	Off-peak season	Peak season	Off-peak season	Peak season	Off-peak season	Peak season	Off-peak season
Current River	Northern boundary to Akers	10 hp	25 hp	No motorboats		No motorboats	25 hp	No motorboats	
	Akers to Pulltite	25 hp	25 hp					No motorboats	25 hp
	Pulltite to Round Spring								
	Round Spring to Two Rivers	60/40 hp		No motorboats	25 hp	60/40 hp		60/40 hp	
	Two Rivers to Van Buren			40 hp					
	Van Buren to Big Spring								
	Big Spring to southern boundary	No hp limits		150 hp		No hp limits			
Jacks Fork	Western boundary to Rymers	10 hp	25 hp	No motorboats		No motorboats	25 hp	No motorboats	
	Rymers to Bay Creek							No motorboats	25 hp
	Bay Creek to Alley Spring	25 hp						25 hp	
	Alley Spring to West Eminence	25 hp							
	East Eminence to Two Rivers	60/40 hp						60/40 hp	

General notes:

- For the No-action alternative, Alternative A, and Alternative C, the Peak season is defined as March 15 through Labor Day.
- For the preferred alternative, peak season is defined as the day after the end of trapping season through the day before the start of gigging season, as established by the Missouri Department of Conservation. Currently those dates would be April 1-September 14.
- Seasonal/mixed use zoning permits use of 25 hp motorboats during the off-peak season.
- The designation of 60/40 hp and 150 hp assume a regulation change. Boat motor horsepower is measured at the powerhead.
- The color codes correspond to the river-based management zones described in table 3:

Mixed-use	Seasonal mixed-use	Nonmotorized
-----------	--------------------	--------------





## Categorical Exclusion Documentation Form (CE Form)

**Project:** Modify Motorboat Horsepower Zoning in 2015 General Management Plan

**PEPC Project Number:** 113622

**Description of Action (Project Description):**

SCOPE OF WORK "Change to Horsepower Regulation"

### 1. GENERAL

#### A. Summary

a. Ozark National Scenic Riverways is a unit of the National Park Service and is located in South Central, Mo b. After analyzing the public comments for the Horsepower Regulation, the park management Team has decided that a change to the proposed regulation would be warranted. c. The change would include making the 60-horsepower area from the Big Spring boat Ramp (36.952877x-90.989975) up to the lower end of the Van Buren Gap (36.9700385x-90.978978) 150 horsepower limit. This distance is about 1.34-mile, straight line. d. The belief is that this would make the area more consistent, enforceable, and relieve some parking pressure on the Big Spring boat ramp. e. The current regulation changes from unlimited (Gap) to 60 HP to 150 HP within less than a 2-mile section of the river. B. Requested change

a. Correct the tables and narrative in both the GMP and the Horsepower regulation. b. Post the changes in PEPC for public review

#### A. Conditions

Goal: Make all changes to the proposed regulation clearly stated and available for the public.

#### Project Locations:

##### Location

**County:** Carter **State:** MO

There are no required mitigations identified.

**CE Citation:** 3.3.B.1 Changes or amendments to an approved plan, when such changes would cause no or only minimal environmental impact.

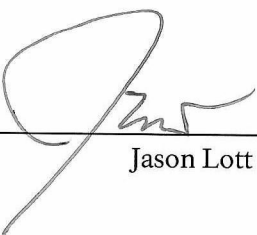
#### CE Justification:

Minor motorboat zoning change to the 2015 GMP, provides consistent and enforceable horsepower regulations to a short section of the river.

Decision: I find that the action fits within the categorical exclusion above. Therefore, I am categorically excluding the described project from further NEPA analysis. No extraordinary circumstances apply.

Signature

Superintendent:

  
\_\_\_\_\_  
Jason Lott

Date:

1/3/23



**Extraordinary Circumstances:**

If implemented, would the proposal...	Yes/No	Explanation
A. Have significant impacts on public health or safety?	No	Proposed actions consistent with the 2015 GMP, p. 350-351.
B. Have significant impacts on such natural resources and unique geographic characteristics as historic or cultural resources; park, recreation, or refuge lands; wilderness areas; wild or scenic rivers; national natural landmarks; sole or principal drinking water aquifers; prime farmlands; wetlands (Executive Order 11990); floodplains (Executive Order 11988); national monuments; migratory birds; and other ecologically significant or critical areas?	No	No significant impacts, environmental effects or risks outside of analysis in chapters 4 and 5 of the 2015 GMP. No wetland impacts, action is an exempted activity for floodplains.
C. Have highly controversial environmental effects or involve unresolved conflicts concerning alternative uses of available resources (NEPA section 102(2)(E))?	No	Proposed actions are consistent with the 2015 GMP zoning prescriptions defined in Chapter 2.
D. Have highly uncertain and potentially significant environmental effects or involve unique or unknown environmental risks?	No	No additional environmental effects or risks outside of analysis in chapters 4 and 5 of the 2015 GMP.
E. Establish a precedent for future action or represent a decision in principle about future actions with potentially significant environmental effects?	No	Proposed actions are consistent with the 2015 GMP zoning prescriptions defined in Chapter 2, and does not imply additional future actions.
F. Have a direct relationship to other actions with individually insignificant, but cumulatively significant, environmental effects?	No	Minor change to the GMP, does not change the use patterns for the river.
G. Have significant impacts on properties listed or eligible for listing on the National Register of Historic Places, as determined by either the bureau or office?	No	No potential to cause effect, see AEF.
H. Have significant impacts on species listed or proposed to be listed on the List of Endangered or Threatened Species, or have significant impacts on designated Critical Habitat for these species?	No	Proposed actions are consistent with the zoning prescriptions of the 2015 GMP and does not pose significant impacts as reviewed. GMP p. 298.
I. Violate a federal, state, local or tribal law or requirement imposed for the protection of the environment?	No	No additional laws or regulations are impacted.
J. Have a disproportionately high and adverse effect on low income or minority populations (EO 12898)?	No	The 2015 GMP P. 376-378 addresses the socioeconomic impacts for actions consistent for the zone.
K. Limit access to and ceremonial use of Indian sacred sites on federal lands by Indian religious practitioners or adversely affect the physical integrity of such sacred sites (EO 130007)?	No	No potential to cause effect, see AEF.
L. Contribute to the introduction, continued existence, or spread of noxious weeds or non-native invasive species known to occur in the area or actions that may promote the introduction, growth, or expansion of the range of such species (Federal Noxious Weed Control Act and Executive Order 13112)?	No	This proposed action does not add any additional risk to the introduction or expansion of invasive species, action is consistent with the 2015 GMP.



---

# ASSESSMENT OF ACTIONS HAVING AN EFFECT ON HISTORIC PROPERTIES

## A. DESCRIPTION OF UNDERTAKING

1. **Park:** Ozark National Scenic Riverways

### 2. Project Description:

**Project Name:** Modify Motorboat Horsepower Zoning in 2015 General Management Plan

**Prepared by:** Jessica Fry    **Date Prepared:** 12/12/2022    **Telephone:**

**PEPC Project Number:** 113622

#### **Locations:**

County, State: Carter, MO

#### **Describe project:**

SCOPE OF WORK

"Change to Horsepower Regulation"

## 1. GENERAL

### A. Summary

- a. Ozark National Scenic Riverways is a unit of the National Park Service and is located in South Central, Mo
- b. After analyzing the public comments for the Horsepower Regulation, the park management Team has decided that a change to the proposed regulation would be warranted.
- c. The change would include making the 60-horsepower area from the Big Spring boat Ramp (36.952877x-90.989975) up to the lower end of the Van Buren Gap (36.9700385x-90.978978) 150 horsepower limit. This distance is about 1.34-mile, straight line.
- d. The belief is that this would make the area more consistent, enforceable, and relieve some parking pressure on the Big Spring boat ramp.
- e. The current regulation changes from unlimited (Gap) to 60 HP to 150 HP within less than a 2-mile section of the river.

### B. Requested change

- a. Correct the tables and narrative in both the GMP and the Horsepower regulation.
- b. Post the changes in PEPC for public review

### A. Conditions

Goal: Make all changes to the proposed regulation clearly stated and available for the public.

### **Area of potential effects (as defined in 36 CFR 800.16[d])**

APE is a 1.34 mile stretch of the Current River between the Big Spring boat ramp and the edge of the "Van Buren Gap" to the north. Following public comment from PEPC 108182, the GMP regulation change is being further



amended to allow for higher horsepower in this stretch, to alleviate boat launch traffic at the ramp and to make enforcement more consistent. Under PEPC 108182, the 1.34 mile stretch had a lower horsepower limitation than the immediate areas both to the north and south; the new rule would make the limits consistent below the gap. A portion of the river in the APE serves as the boundary for the Big Spring Historic District; however, the majority of the district is already subject to the higher horsepower limitation, so the change is not expected to affect the district. Prior to 108182, there were no horsepower limits in the Lower Current area. This project will not result in any construction, ground disturbance, or other landscape changes. No additions will be made to museum collections.

**3. Has the area of potential effects been surveyed to identify historic properties?**

☐ No  
☒ Yes

**Source or reference:** Big Spring CLI, Big Spring HSR, Big Spring CLR, various archeological reports

**4. Potentially Affected Resource(s):**

**Archeological Resources Present:** No

**Historical Structures/Resources Present:** No

**Cultural Landscapes Present:** Yes

**Cultural Landscapes Notes:** Current River forms the boundary of the Big Spring Historic District.

**Ethnographic Resources Present:** No

**5. The proposed action will: (check as many as apply)**

- ☐ No Destroy, remove, or alter features/elements from a historic structure  
☐ No Replace historic features/elements in kind  
☐ No Add non-historic features/elements to a historic structure  
☐ No Alter or remove features/elements of a historic setting or environment (inc. terrain)  
☐ No Add non-historic features/elements (inc. visual, audible, or atmospheric) to a historic setting or cultural landscape  
☐ No Disturb, destroy, or make archeological resources inaccessible  
☐ No Disturb, destroy, or make ethnographic resources inaccessible  
☐ No Potentially affect presently unidentified cultural resources  
☐ No Begin or contribute to deterioration of historic features, terrain, setting, landscape elements, or archeological or ethnographic resources  
☐ No Involve a real property transaction (exchange, sale, or lease of land or structures)  
☐ Other (please specify): \_\_\_\_\_

**6. Supporting Study Data:**

(Attach if feasible; if action is in a plan, EA or EIS, give name and project or page number.)

**B. REVIEWS BY CULTURAL RESOURCE SPECIALISTS**

The park 106 coordinator requested review by the park's cultural resource specialist/advisors as indicated by check-off boxes or as follows:

---

**[ X ] Other Advisor**

**Name:** Suika Rivett

**Date:** 12/13/2022

**Check if project does not involve ground disturbance [ ]**

**Assessment of Effect:** ☒ No Potential to Cause Effect ☐ No Historic Properties Affected ☐ No Adverse Effect ☐ Adverse Effect ☐ Streamlined Review

**Recommendations for conditions or stipulations:**

---

**No Reviews From:** Curator, Archeologist, Historical Architect, Historian, 106 Advisor, Anthropologist, Historical Landscape Architect

---

**C. PARK SECTION 106 COORDINATOR'S REVIEW AND RECOMMENDATIONS**

**1. Assessment of Effect:**

☒ No Potential to Cause Effects  
☐ No Historic Properties Affected  
☐ No Adverse Effect  
☐ Adverse Effect

**2. Documentation Method:**

**[ ] A. Standard 36 CFR Part 800 Consultation**

Further consultation under 36 CFR Part 800 is needed.

**[ ] B. Streamlined Review Under the 2008 Servicewide Programmatic Agreement (PA)**

The above action meets all conditions for a streamlined review under section III of the 2008 Servicewide PA for Section 106 compliance.

**Applicable Streamlined Review Criteria**

(Specify 1-16 of the list of streamlined review criteria.)

**[ ] C. Undertaking Related to Park Specific or Another Agreement**

The proposed undertaking is covered for Section 106 purposes under another document such as a park, region or statewide agreement established in accord with 36 CFR 800.7 or 36 CFR 800.14.

**[ ] D. Combined NEPA/NHPA Process**

Process and documentation required for the preparation of an EA/FONSI or an EIS/ROD to comply with Section 106 is in accord with 36 CFR 800.8.c.

**[ X ] E. Memo to Project File**

**3. Consultation Information**

SHPO Required: No

SHPO Sent:

SHPO Received:

THPO Required:

THPO Sent:

THPO Received:

SHPO/THPO Notes:

Advisory Council Participating: No

Advisory Council Notes:

N/A

**4. Stipulations and Conditions:**

N/A

**5. Mitigations/Treatment Measures:** Measures to prevent or minimize loss or impairment of historic/prehistoric properties: (Remember that setting, location, and use may be relevant.)

No Assessment of Effect mitigations identified.

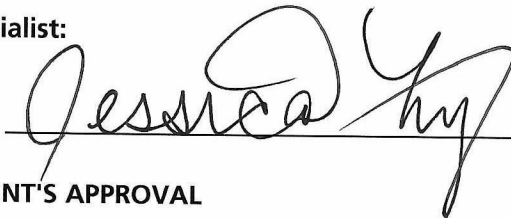
**6. Assessment of Effect Notes:**

**D. RECOMMENDED BY PARK SECTION 106 COORDINATOR:**

Compliance Specialist:

NHPA Specialist

Jessica Fry



Date:

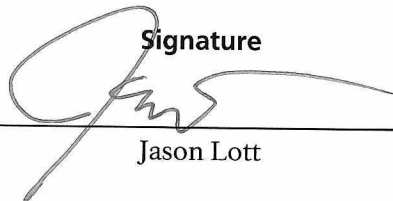
1/3/23

**E. SUPERINTENDENT'S APPROVAL**

The proposed work conforms to the NPS *Management Policies* and *Cultural Resource Management Guideline*, and I have reviewed and approve the recommendations, stipulations, or conditions noted in Section C of this form.

Signature

Superintendent:



Jason Lott

Date:

1/3/23