

# Why Are We Doing This Study?

- **Current maintenance facility is over capacity and vehicle maintenance is completed on a gravel lot.**
- **Current maintenance facility is in the approximate historic location of the Grand Portage Trail.**
- **Equipment/material storage yard is located on archaeologically sensitive resources, and on prime lake front property that could be put to a more valuable use.**
- **Seasonal housing units are in need of repairs, and are on lake front property owned by the Tribal Council.**



# Existing Conditions



The outdoor storage area for equipment and supplies; located on prime lake front property.



Maintenance facility is overcrowded.

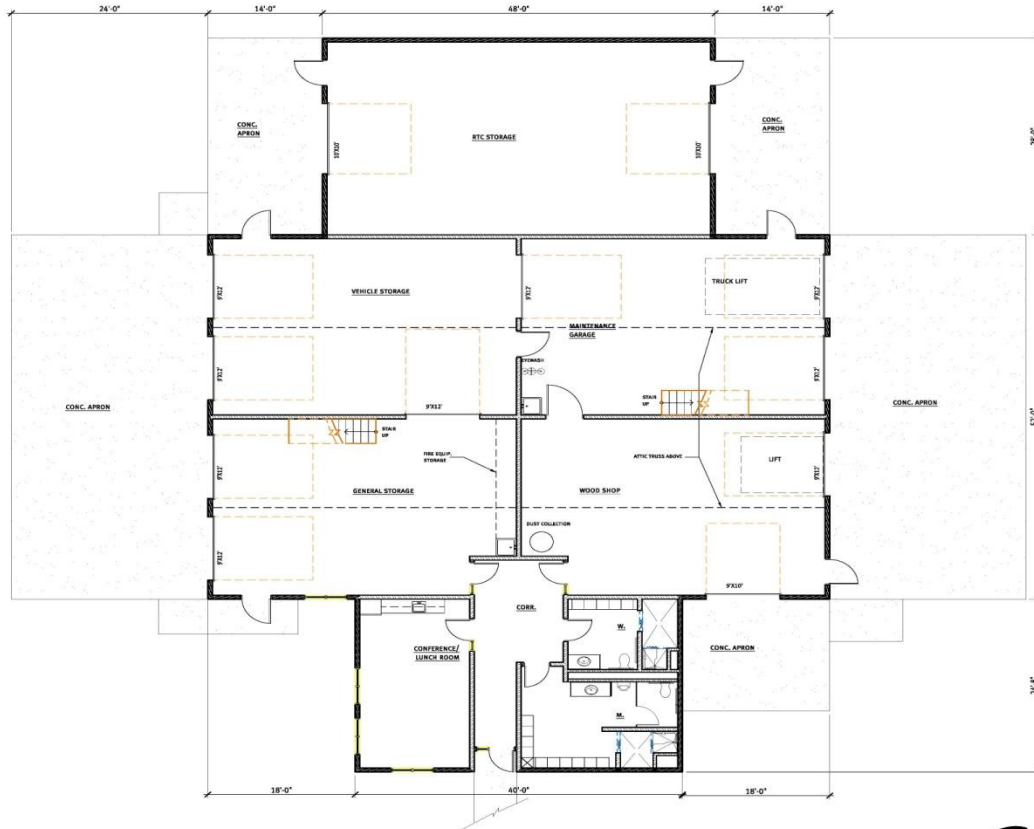


Seasonal housing in need of repairs and located on prime lake front property.



**EA for Grand Portage Maintenance Facility and Housing Project**

# Proposed Maintenance Facility



## PRELIMINARY SCHEMATIC DESIGN

NEW GARAGE/MAINTENANCE FACILITY FOR  
GRAND PORTAGE RESERVATION TRIBAL COUNCIL  
AND NATIONAL PARK SERVICE

1/8"=1'-0"

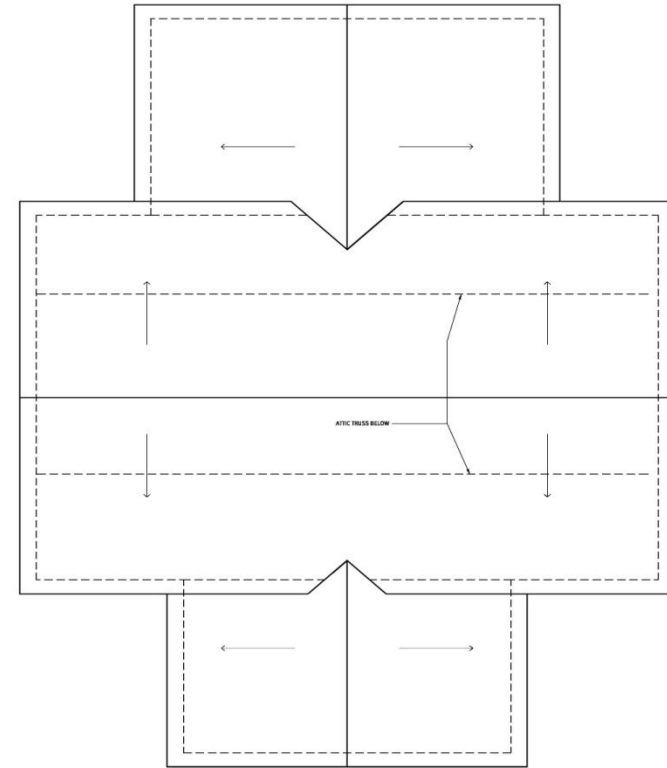
6268 S.F.

MAY 28, 2009

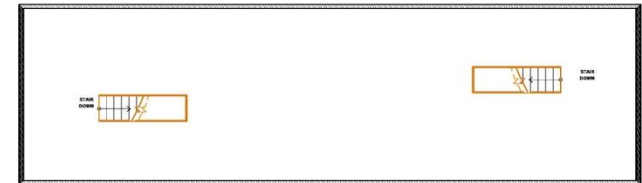


enriching  
communities  
through  
architecture

duluth • virginia • grand rapids • twin cities  
www.dsgw.com



ROOF PLAN



ATTIC PLAN



## EA for Grand Portage Maintenance Facility and Housing Project

# Proposed Layout Plan



**EA for Grand Portage Maintenance Facility and Housing Project**

# Study Elements

**An Environmental Assessment (EA) will be prepared and made available for public review. The study will address various resources including:**

- **Wetland and Waters of the U.S.**
- **Sensitive Plant and Animal Species**
- **Cultural Resources**
- **Land Use**
- **Public Health and Safety**
- **Traffic Volumes at Site**
- **Noise**



# Study Timeline

Housing Project



Maintenance Facility



Task	Spring	Summer	Fall	Winter
Collect Data				
Develop and Analyze Alternatives				
Prepare Environmental Assessment				
Conduct Public Information Meeting				
Prepare Preliminary Design		Complete (Stock Plan)		
Prepare Final Design				
Begin Construction				
			Unknown	



**EA for Grand Portage Maintenance Facility and Housing Project**

# How Can the Public Participate?

- **Public Information Meeting**
- **Contact Us Anytime by Phone or E-Mail**
- **Citizen Comment Forms**

**Melvin Gagnon**

**P.O. Box 428 / 83 Stevens Rd**

**Grand Portage, MN 55605**

**(218) 475-0123**

**Melvin\_gagnon@partner.nps.gov**



**EA for Grand Portage Maintenance Facility and Housing Project**