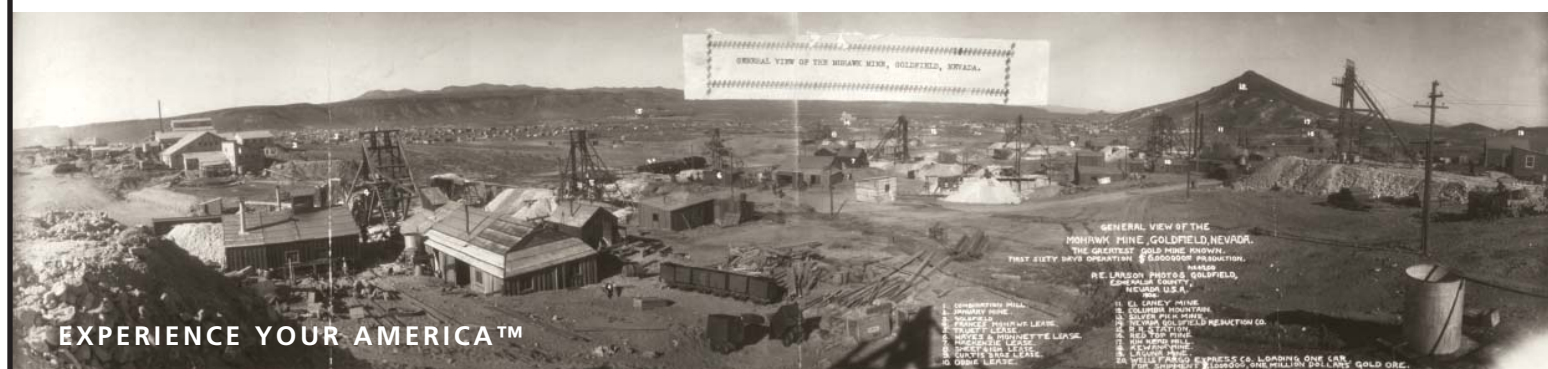
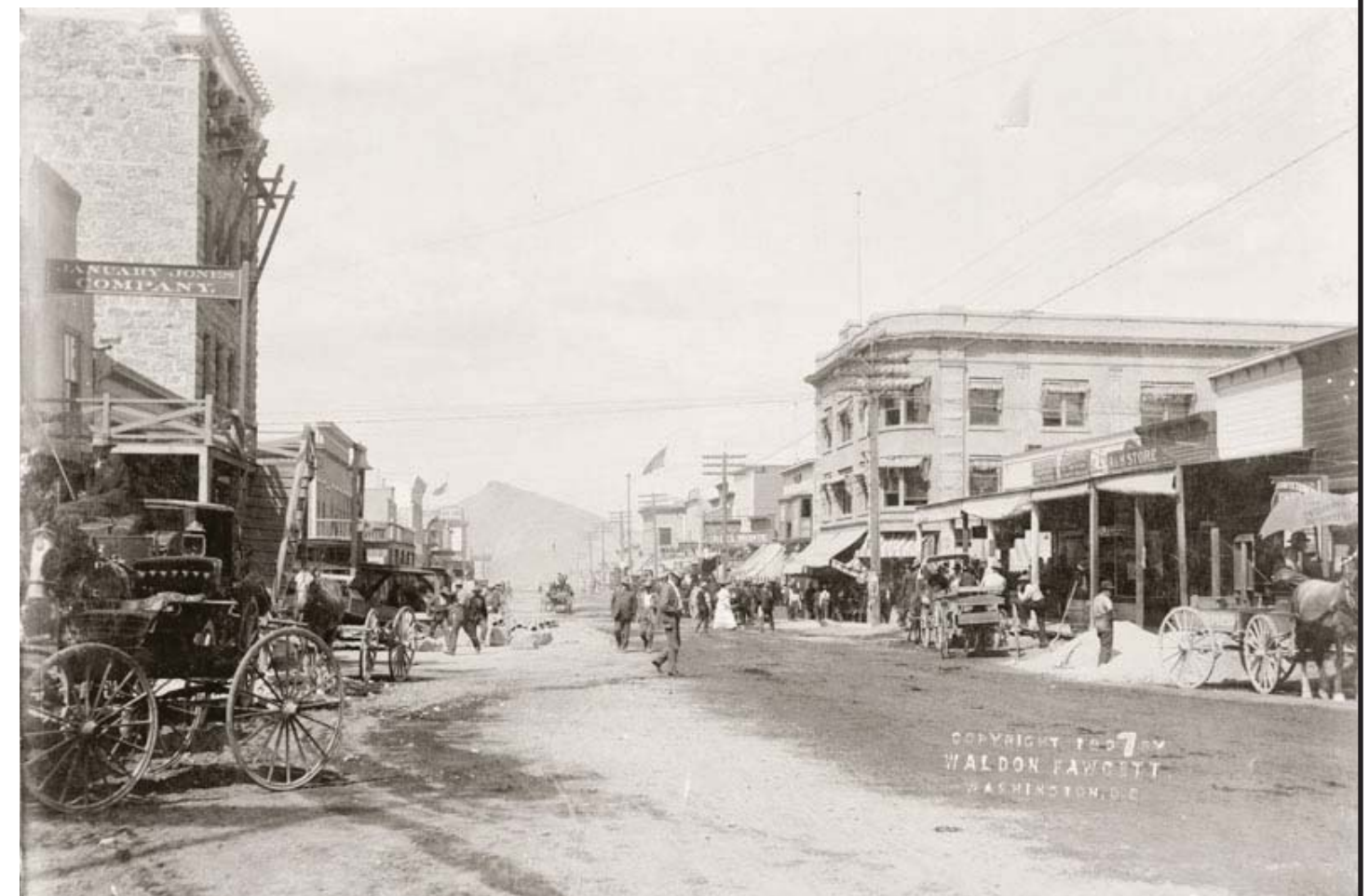




# Goldfield, Nevada

## Reconnaissance Survey

May 2009





**Cover photos:**

FRONT: Top Photo: Goldfield, Nevada, Sept. 30th, 1909, the greatest gold camp in the world, West Coast Art Co., Library of Congress. Bottom Photo: Street scene, Goldfield, Nevada, c1907, Waldon Fawcett, Washington, D.C., Library of Congress.

BACK: Top Photo: see above. Center Photos: Goldfield Consolidated Mines Co. Building, Goldfield Hotel, building foundation remains, Foundation of 100 Stamp Mill, Esmeralda County Courthouse. NPS photos.

THIS PAGE: Goldfield National Historic District sign, Florence Mine, G. L. "Tex" Rickard House, Curtis Building, Curtis Building interior, Goldfield High School, Bullfrog Goldfield Railroad engine repair pit, mining homes, red light district structures, John Ekman of the Goldfield Historic Society holding an IWW Local No. 77 Union House Card, and a window of the Goldfield Consolidated Mines Co. Building. NPS photos.



The National Park Service cares for the special places saved by the American people so that all may experience our heritage.

Experience Your America



As the nation's principal conservation agency, the Department of the Interior has responsibility for most of our nationally owned public lands and natural resources. This includes fostering sound use of our land and water resources; protecting our fish, wildlife, and biological diversity; preserving the environmental and cultural values of our national parks and historical places; and providing for the enjoyment of life through outdoor recreation. The department assesses our energy and mineral resources and works to ensure that their development is in the best interests of all our people by encouraging stewardship and citizen participation in their care. The department also has a major responsibility for American Indian reservation communities and for people who live in island territories under U.S. administration.

100010/May 2009