



RESTORE THE DISTRICT OF COLUMBIA WAR MEMORIAL

PMIS #150359
NATIONAL PARK SERVICE
NPS-NAMA
HORD COPLAN MACHT



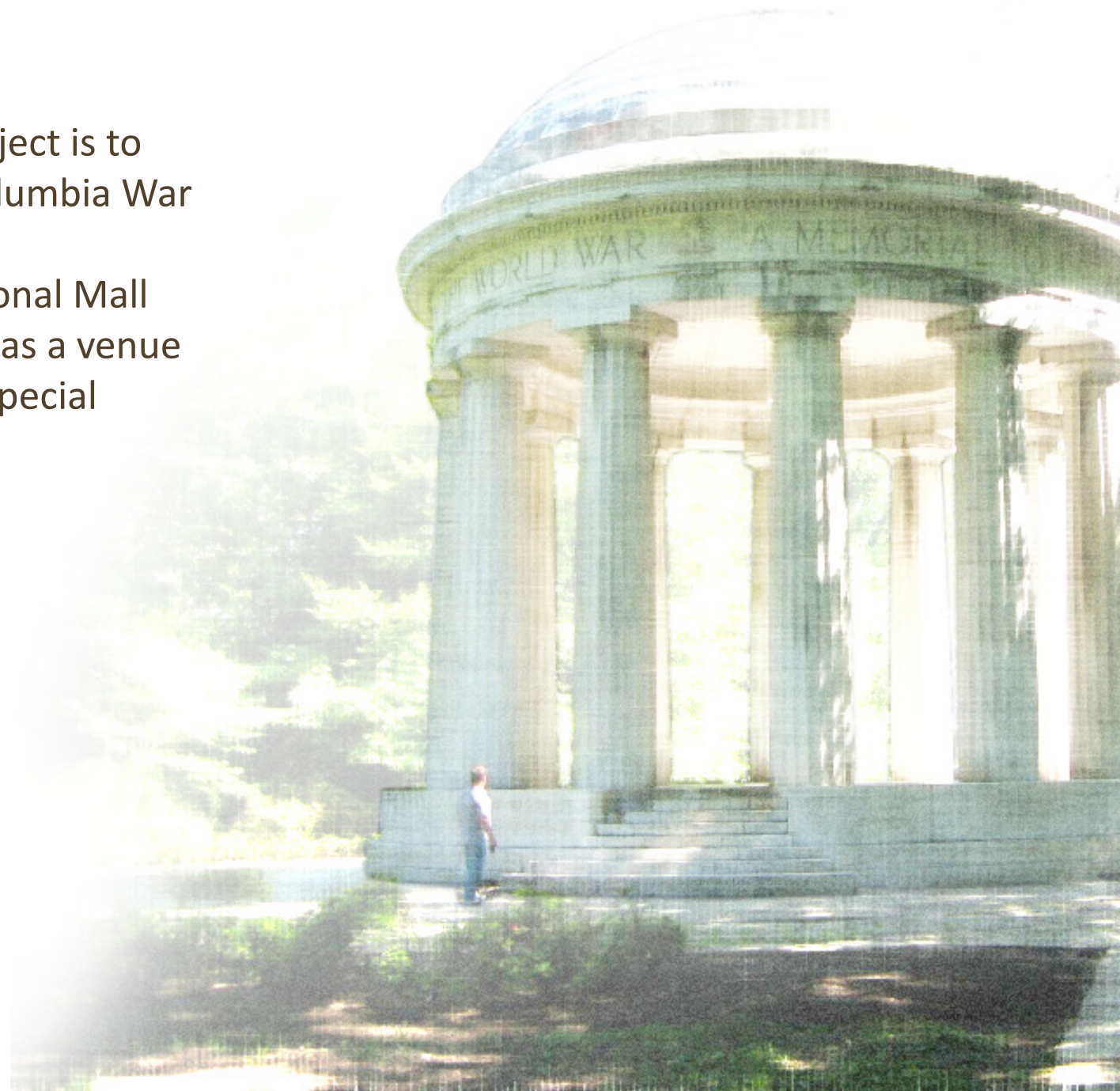
CONSULTANT TEAM

- HORD COPLAN MACHT – Landscape Architecture & Lead Consultant (Baltimore, MD)
- VITETTA - Historic Preservation / Architecture (Philadelphia, PA)
- HERITAGE LANDSCAPES - Preservation Landscape Architecture (Charlotte, VT)
- GEORGE SEXTON ASSOCIATES, INC. - Lighting Design (Washington, DC)
- CONSERVATION SOLUTIONS, INC. - Conservators (District Heights, MD)
- DMS INTERNATIONAL, INC. - Cost Estimating (Columbia, MD)
- WEIGAND ASSOCIATES, INC. - MPE Engineering (Gaithersburg, MD)
- WILES MENSCH CORPORATION - Surveying and Civil Engineering (Reston, VA)



PROJECT OBJECTIVE

- The objective of the project is to return the District of Columbia War Memorial to its place of significance on the National Mall while continuing its use as a venue for concerts and other special events.



CONTEXT PLAN



RESTORE THE DISTRICT OF COLUMBIA WAR MEMORIAL

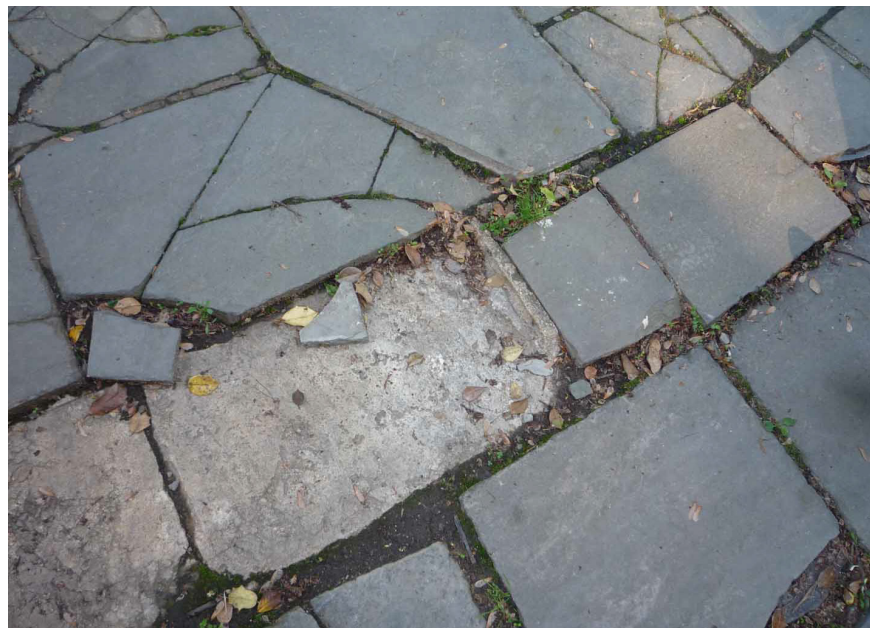
EXISTING CONDITIONS



Looking South from Ash Road



Aerial view of Memorial – Ash Road to North, Independence Avenue to South



Deteriorated Bluestone paving

EXISTING CONDITIONS



Looking East from West Side of Memorial



Looking North from Independence Avenue

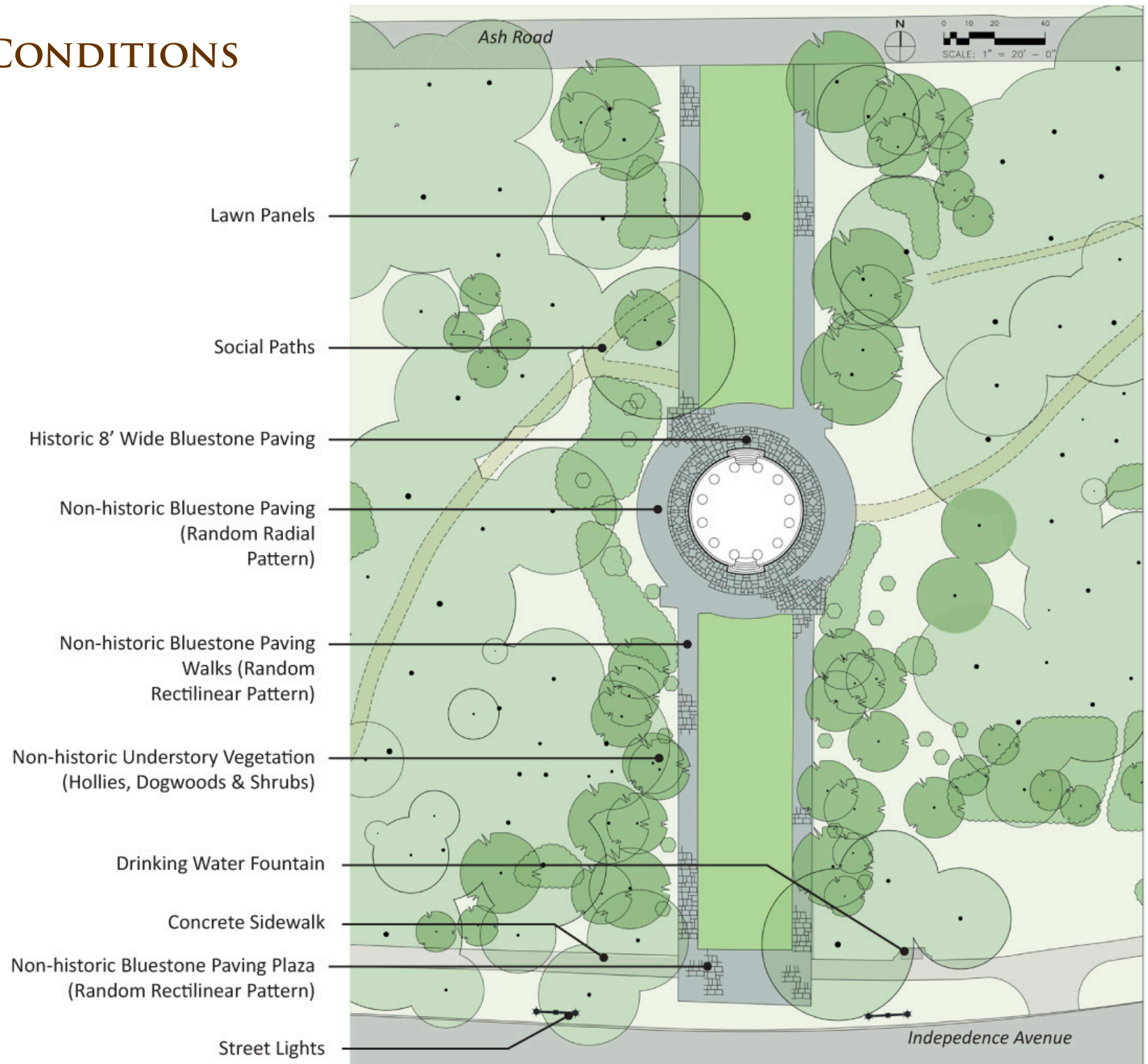


Looking South from Ash Road

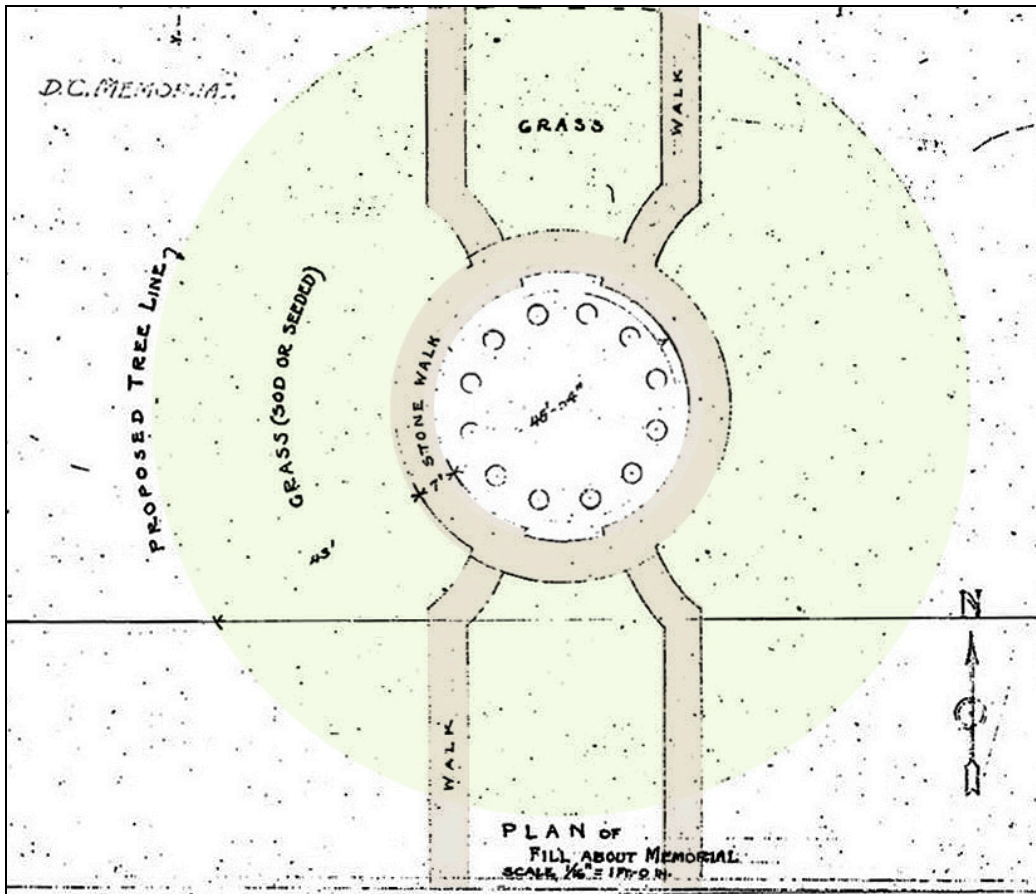


Looking West from East Side of Memorial

EXISTING CONDITIONS



HISTORIC CONTEXT



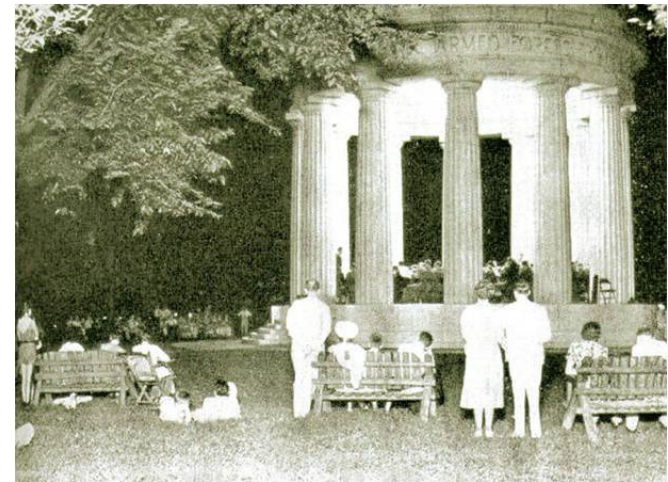
1931 Plan – Color added for legibility

The memorial was designed by Frederick H. Brooke, Horace W. Peaslee and Nathan C. Wyeth. It was built in 1931 to memorialize the residents of Washington DC that had lost their lives in WWI. It was also designed to be used as a bandstand.

Fall 1931



1939



May 1 1960



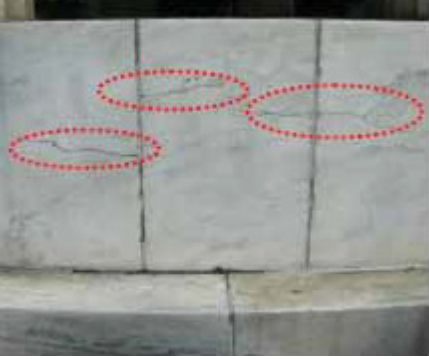
PROJECT SCOPE - ARCHITECTURE

- The memorial is in good condition but shows signs of age which can be addressed by cleaning the marble, repairing the stone, repointing the joints and addressing water infiltration through the gutter and internal storm water conductor system.
- Repair the structure by re-pointing open mortar joints, repairing cracks, micro-cracks and spalled stone. Displaced stones of a significant dimension will be evaluated to warrant removal and reinstallation.
- Replace the existing vault hatch. The design will be based on historic photographs.
- Investigate options to replace the existing metal gutter on the roof of the Memorial structure.
- Investigate options to repair/re-line the storm water conductors within the four columns.
- Clean the stone to remove general soiling, calcium deposits, rainwater staining, biological and non-biological staining. Removal of the existing water repellent will also be investigated.
- Upgrade the existing electrical and data service equipment to handle expected future loads.
- Replace existing interior dome lighting, replicating the historic light levels during the 1930's period of significance.

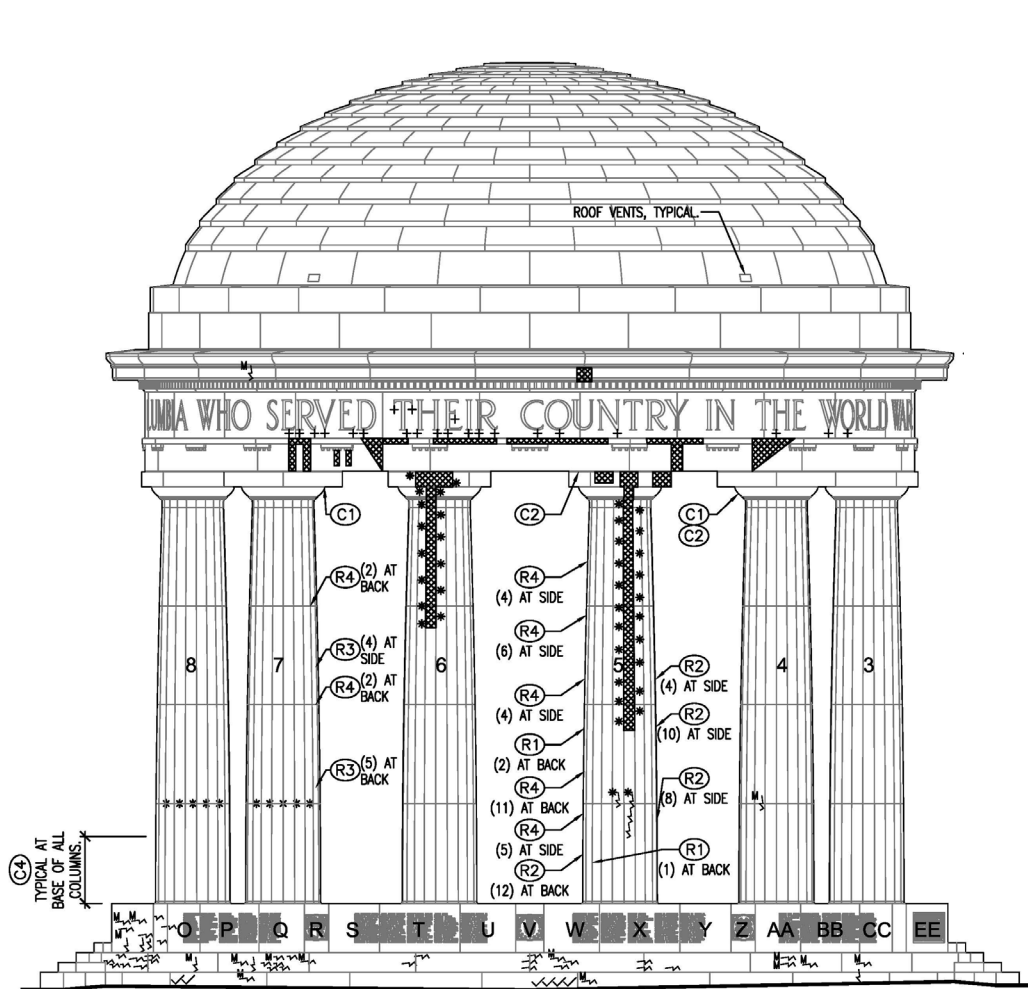


EXISTING ARCHITECTURAL CONDITIONS

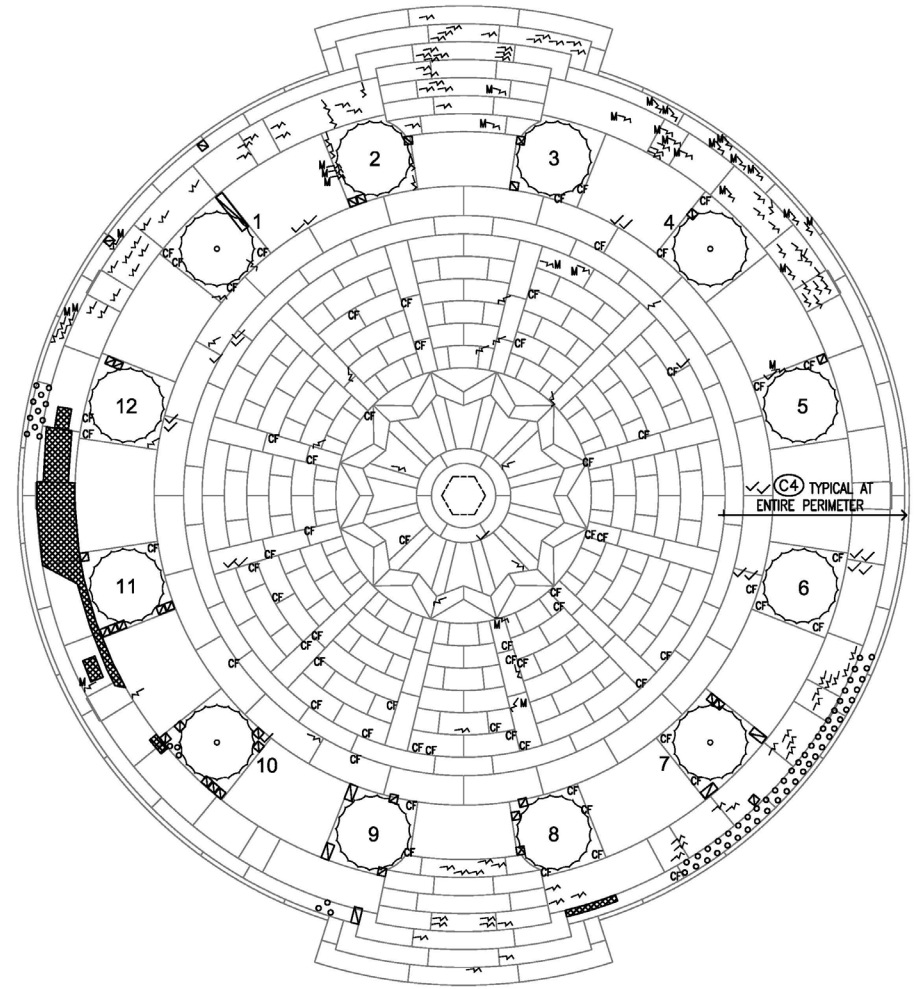
- Cracks and micro-cracks
- Spalled Stone
- Cementitious Fill
- Displaced Stone
- Soiling: Heavy Soiling, Calcium Carbonate Deposits, Biological Stains, Gray/Brown Stains, Pink/Red Stains and Orange /Red Stains



DOCUMENTATION OF EXISTING CONDITIONS



1 EAST ELEVATION
A-1
4 0 4 8
SCALE OF FEET



2 FLOOR PLAN
A-1
4 0 4 8
SCALE OF FEET



STONE TEST CLEANING



Marble cleaning on column



Copper stain removal on base



Marble at base – before and after cleaning



Micro-abrasive cleaning on column

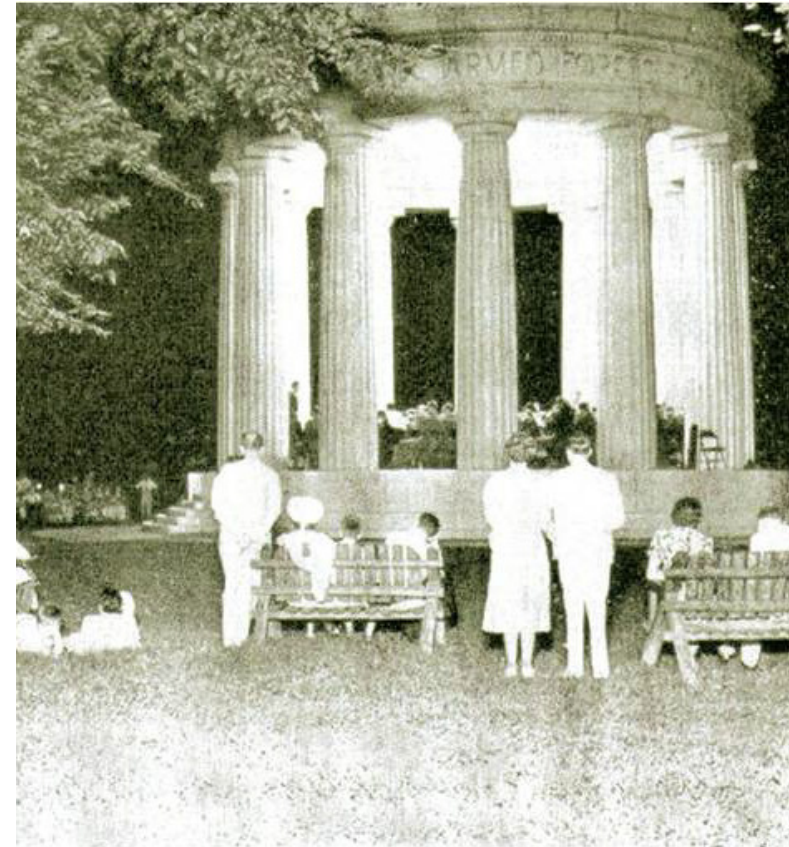


Water mist cleaning



LIGHTING

- Historic photos reveal that there were concealed fixtures in the dome, and the light was evenly distributed across the dome interior.
- New lighting concepts currently being researched include metal halide up-lights, cold cathode light strips and light emitting diodes (LED's).
- All solutions will be designed to cross-light the dome for consistency of light with no hotspots near the cornice.
- Lighting control options include a central switch located in the electrical vault below the structure with a time clock to control the lighting from dusk until dawn.



HISTORIC LANDSCAPE PLAN – PERIOD OF SIGNIFICANCE 1930-1939

Defining Features of The 1931 Plan

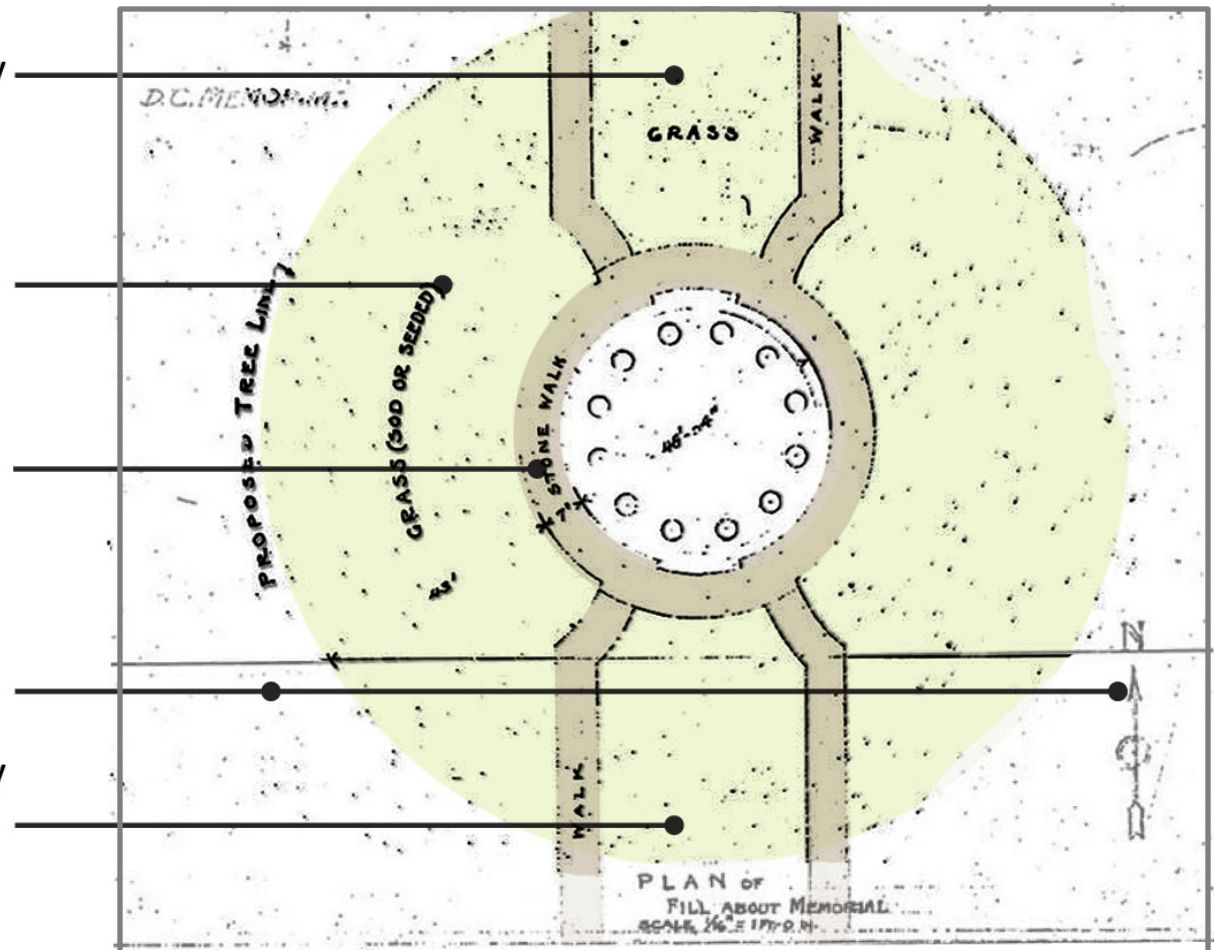
North axial grass panels flanked by
crushed gravel walks and shaded
by memorial Elm trees

50' wide vista of open lawn
encircling the memorial

8' encircling bluestone walk
around base of Memorial

East and West Memorial Grove

South axial grass panels flanked by
crushed gravel walks and shaded
by memorial Elm trees



Color added for legibility



LANDSCAPE/HARDSCAPE EXISTING CONDITIONS

- Addition of understory plantings over time has degraded and compromised the character of the 1930's plan.
- The remnant memorial hardwood grove is devolved into a mix of canopy hardwoods, evergreens, understory plantings, and non-native volunteers.
- Unclear organization of the site due to the encroachment of the landscape into the original 50' open turf area.
- The open lawn area has been lost, preventing the use of the memorial as a bandstand and gathering place.
- Views have become shrouded along the Memorial axis. There is sparse visibility of the Memorial from the adjacent groves of trees.



LANDSCAPE/HARDSCAPE EXISTING CONDITIONS

- The North-South turf panels remain in place.
- Poor soils and slow percolation rates have resulted in the ponding of water; soil erosion evident in other areas.
- Non-original pattern of walkways with additional bluestone paving around the original 8' wide Memorial paving.
- Network of broad, degrading social paths within the grove
- Deteriorated bluestone walks



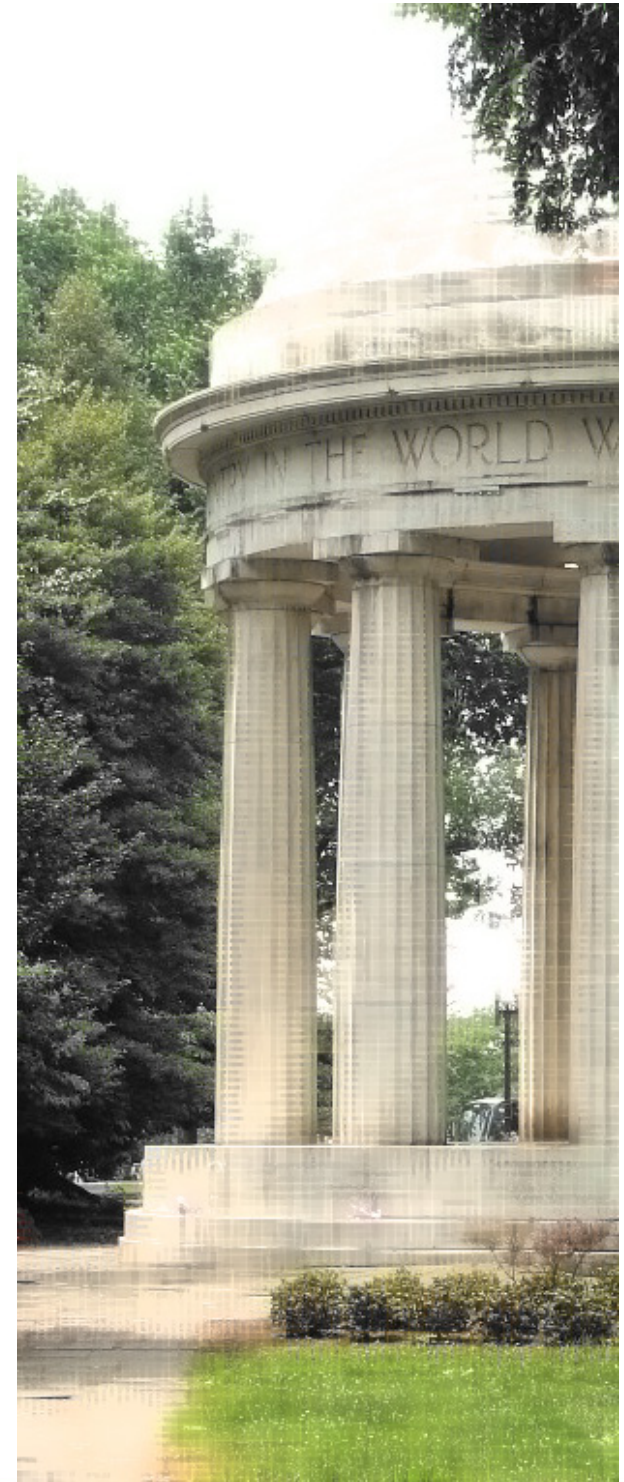
PROJECT SCOPE – SITE AND LANDSCAPE

- Regrade the existing lawn areas to provide positive drainage to an upgraded storm water management system.
- Remove invasive, non-historic trees and understory plantings to improve views to the memorial structure.
- Replant historic memorial Elm tree grove.
- Re-establish the historic 50' wide vista of open lawn around the memorial to re-establish sight lines and space for gatherings during events.
- Restore historic 8' wide encircling bluestone paving (ca. 1931) at the base of the memorial.
- Investigate rehabilitation options for non-historic paving to accommodate current park use and maintenance needs.



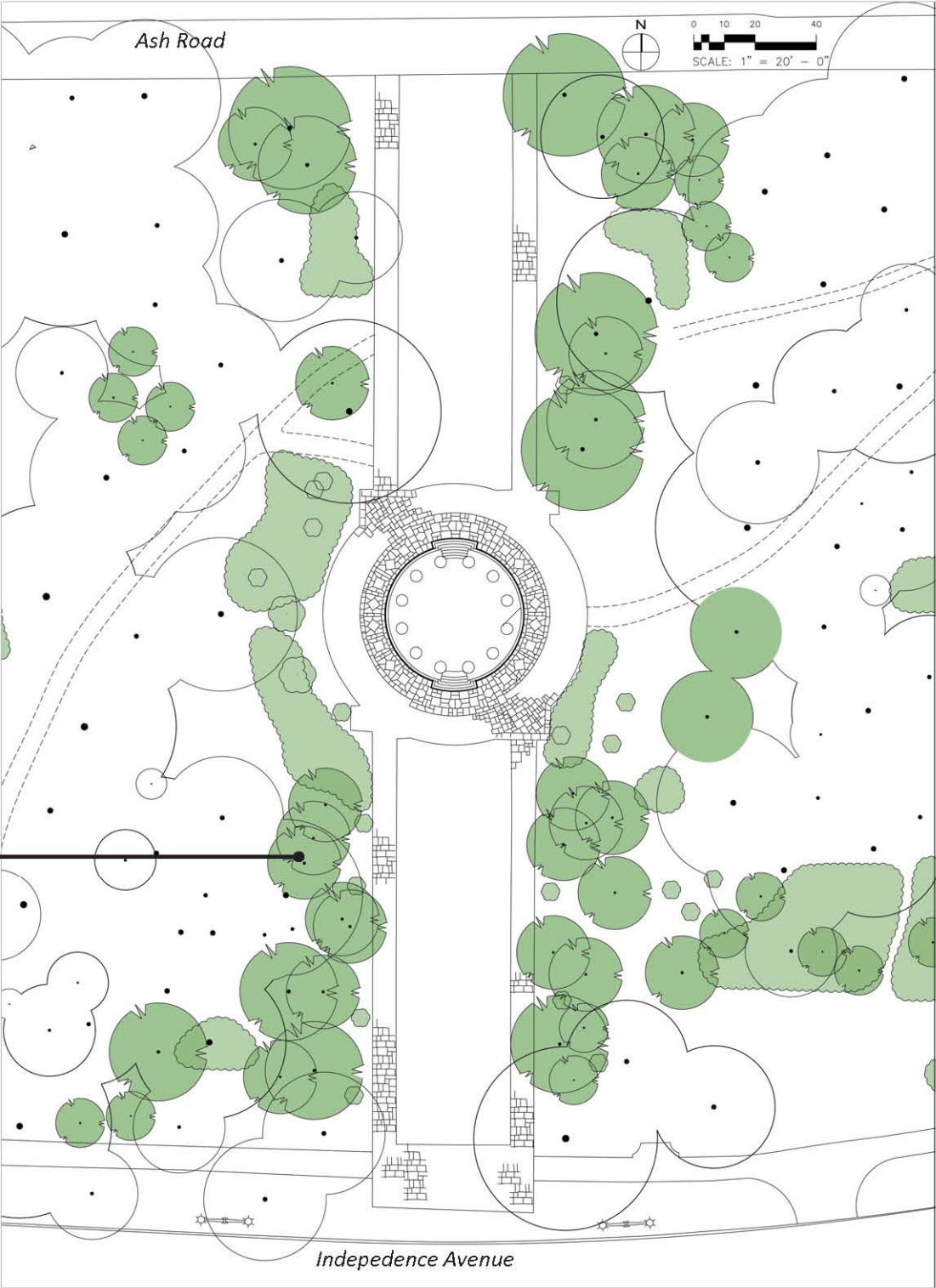
LANDSCAPE RESTORATION RECOMMENDATIONS

- Remove select non-historic hardwoods, evergreens, understory plantings, and non-native plants.
- Restore 50' wide vista of open lawn around Memorial
- Improve the grading and storm water drainage
- Replant Elm trees to reinforce site edges and restore the historic memorial grove
- Replace and reinforce lawn areas



PLAN OF VEGETATION TO BE REMOVED

Existing Non-historic Understory
Vegetation to be Removed (Hollies,
Dogwoods & Shrubs)



HARDSCAPE RESTORATION/REHABILITATION RECOMMENDATIONS



- Replace historic 8' wide bluestone paving encircling the base of the Memorial; retain historic ornamental pattern
- Replace existing outer ring of non-historic paving around memorial
- Replace bluestone walkways with new bluestone or granite paving, designed to support occasional vehicular traffic for access and maintenance.



SCHEME A: 1930's PERIOD OF SIGNIFICANCE PLAN RESTORATION



- Restores the significant spatial organization between the Memorial and the site.
- Re-establish the historic 50' wide vista of open lawn around the Memorial.
- Remove non-historic vegetation and understory plantings to re-establish sight lines. Replant historic memorial Elm grove as per historic plan and to redefine edges.
- Re-establish historic pattern and material of walks.
- Restore the 8' wide historic bluestone paving encircling the base of the Memorial.
- Stabilize turf areas to accommodate daily visitor traffic and gatherings during events.
- Improve soils and drainage.



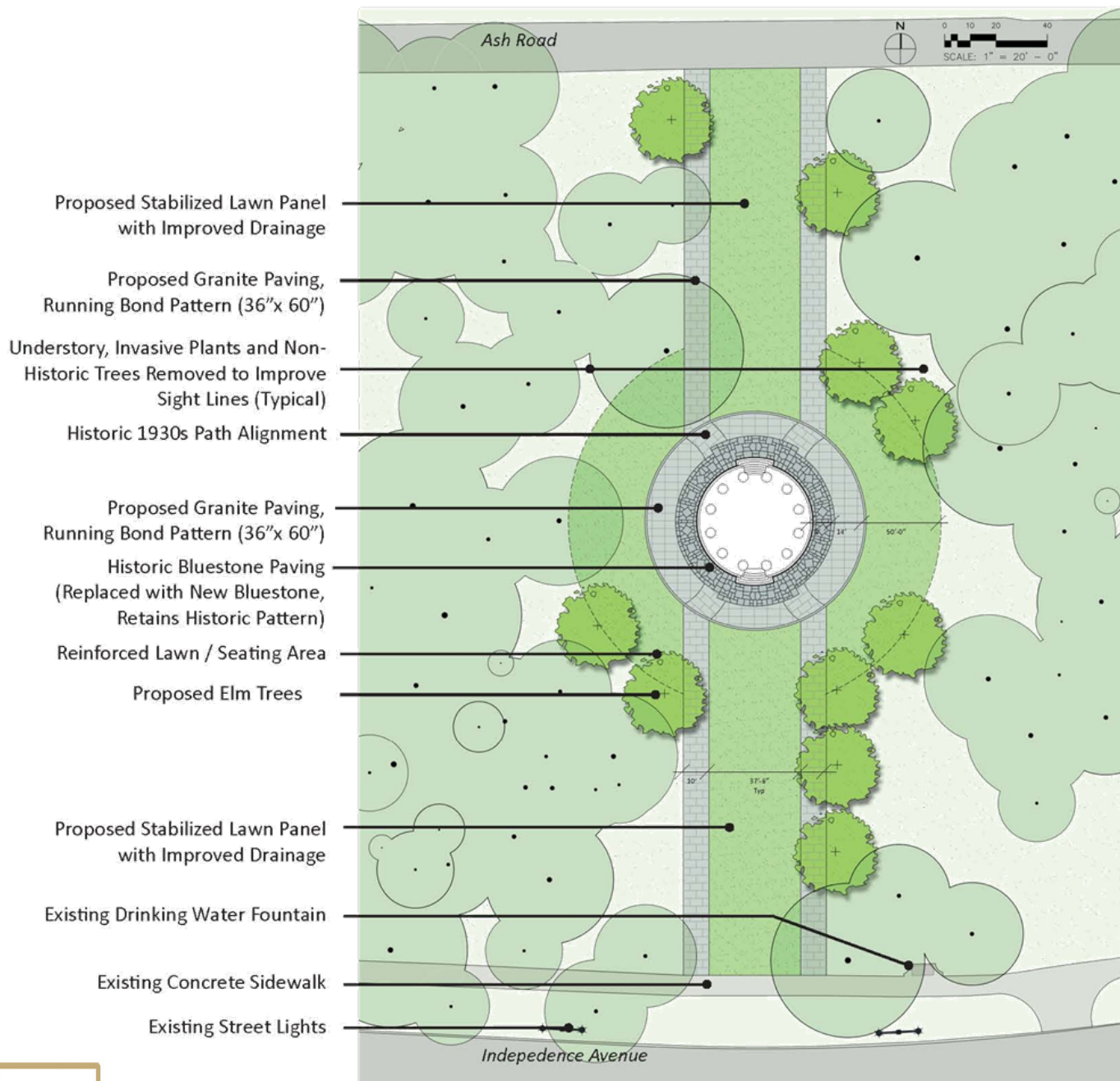
SCHEME B: PROPOSED REHABILITATION



- Retains the historic treatment while meeting current and future park uses, including occasional vehicular traffic for access and maintenance.
- Rehabilitate the parallel walks and non-historic outer paving circle at the Memorial with new bluestone paving on concrete base. Paving pattern to be compatible in character, scale and detail with the original paving.
- Restore the 8' wide historic bluestone paving encircling the base of the Memorial.
- Re-establish the historic 50' wide vista of open lawn around the Memorial.
- Remove non-historic vegetation and understory plantings to re-establish sight lines. Replant historic memorial Elm grove as per historic plan and to redefine edges.
- Improve soils and drainage.



SCHEME C: PROPOSED REHABILITATION – PREFERRED ALTERNATIVE



- Retains the historic treatment while meeting current and future park uses, including occasional vehicular traffic.
- Rehabilitate the parallel walks and non-historic outer paving circle at the Memorial with new granite paving on concrete base.
- Granite paving to convey a similar visual appearance and be compatible in character, scale and detail with the original paving.
- Widen the walks from 8' to 10' to better accommodate vehicular traffic for access and maintenance.
- Restore the 8' wide historic bluestone paving encircling the base of the Memorial.
- Re-establish the historic 50' wide vista of open lawn around the Memorial.
- Remove non-historic vegetation and understory plantings to re-establish sight lines. Replant historic memorial Elm grove as per historic plan and to redefine edges.
- Improve soils and drainage.



RESTORE THE DISTRICT OF COLUMBIA WAR MEMORIAL

PMIS #150359
NATIONAL PARK SERVICE
NPS-NAMA
HORD COPLAN MACHT

