

# Parkland Rehabilitation Design

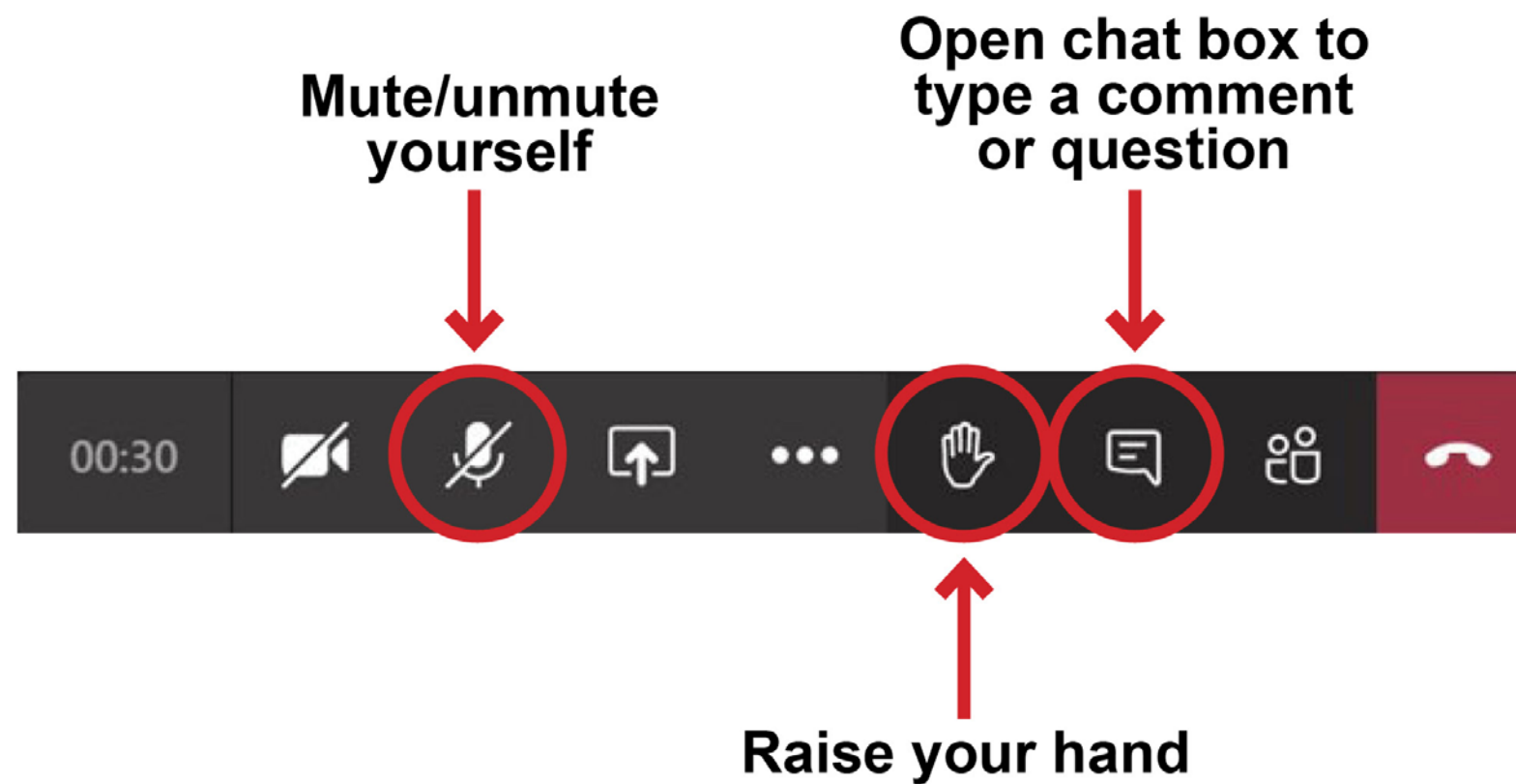
## Public Meeting 2

November 9, 2023



# Meeting Housekeeping

Please sign in to the meeting using the website link posted in the chat box.





# Agenda

Welcome + Introductions

Meeting Purpose + Goals

Project Context

Existing Conditions

Previous Design Concepts

Public Engagement + Agency Comments

Revised Design Concept

How to Submit Comments

Questions + Answers



# Meeting Purpose + Goals



# Meeting Purpose + Goals

The NPS is committed to activating and reinvesting in the Parkland section of Shepherd Parkway located in Congress Heights.

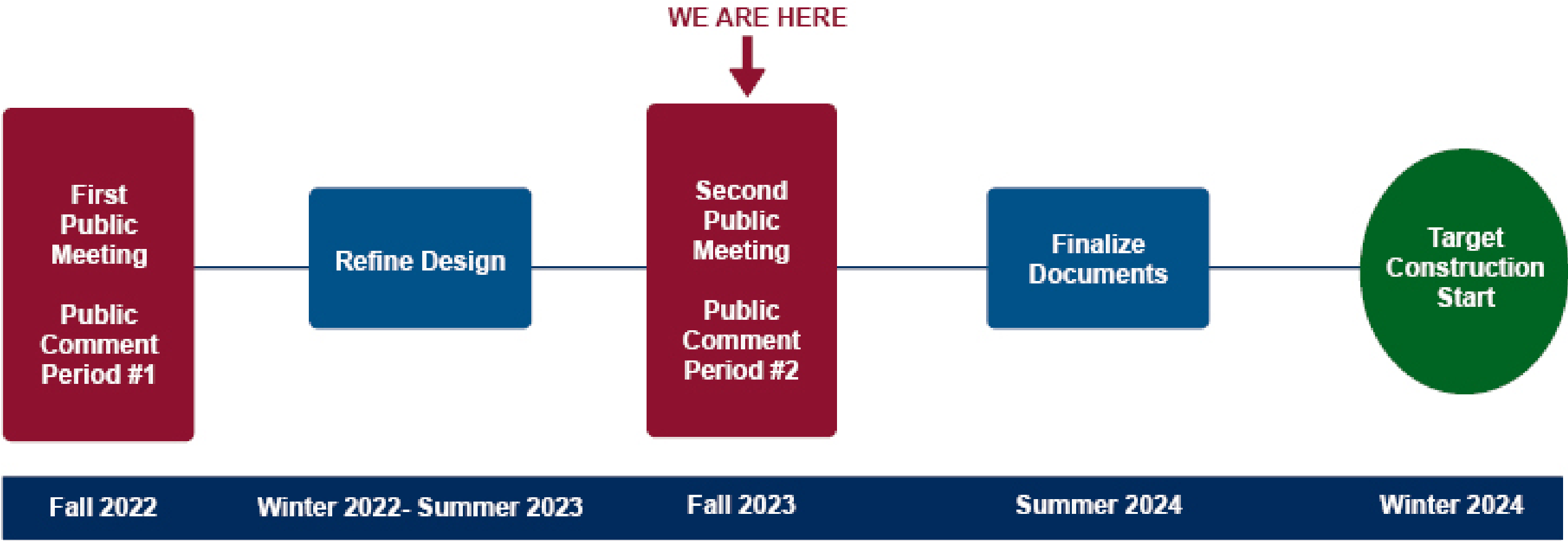
The purpose of this meeting is to provide the public with an opportunity to:

- Review previous design concepts
- Review public and agency feedback received to date
- Review revised design concept
- Identify new issues, concerns, and ideas

Community input remains critical in this phase. The selection and mix of park amenities and play equipment will continue to be largely based on community input.



# Project Timeline





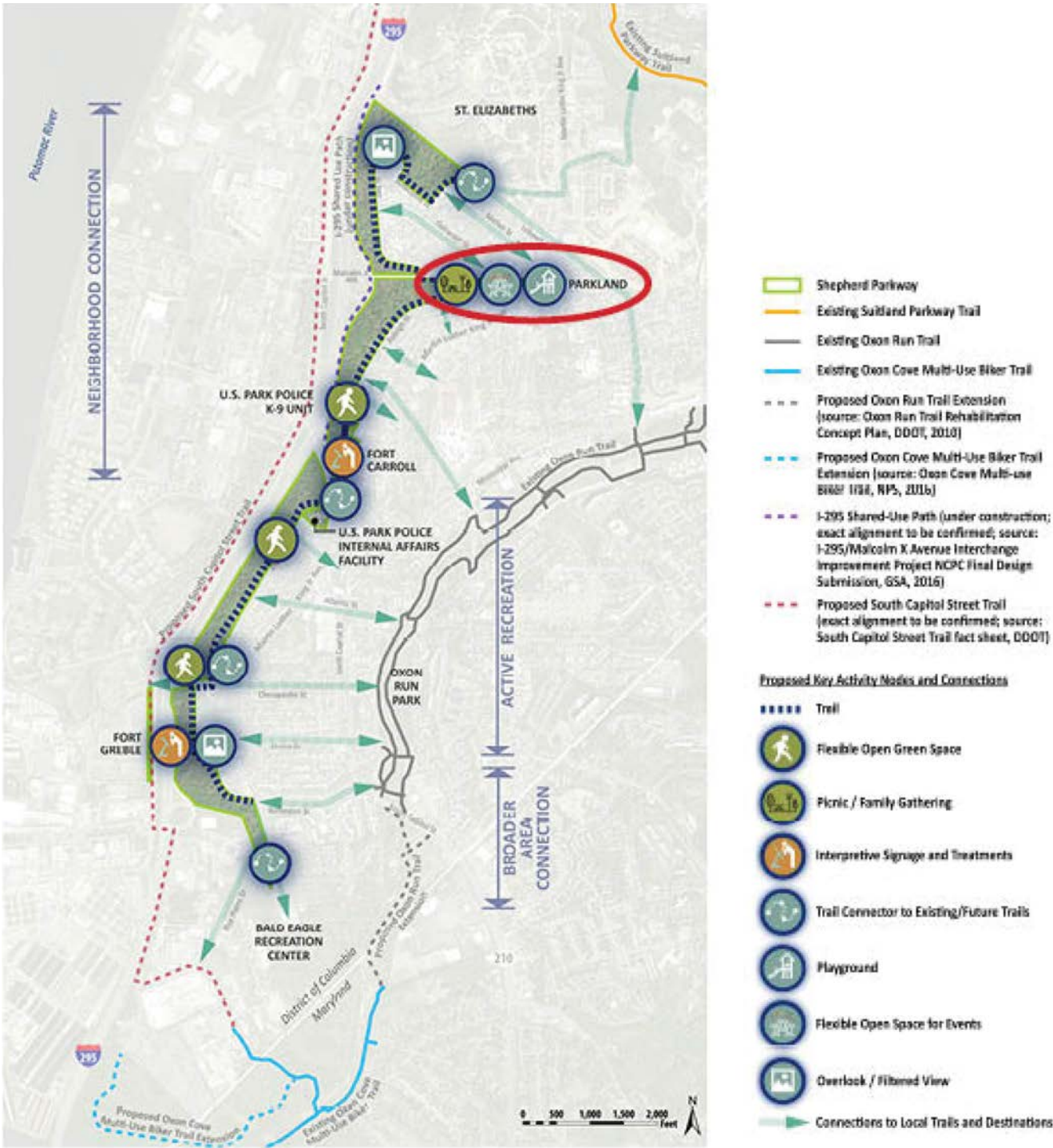
# Project Context



## Project Area: Parkland Section of Shepherd Parkway



# Project Context: Shepherd Parkway DCP





# Project Context: Project Background + Goals

## Project Background

- NPS developed the Shepherd Parkway Development Concept Plan (DCP) in 2020
- DCP provided two overall concepts for Shepherd Parkway and two specifically for Parkland
- Parkland is the first project of the DCP for implementation

## Project Goals

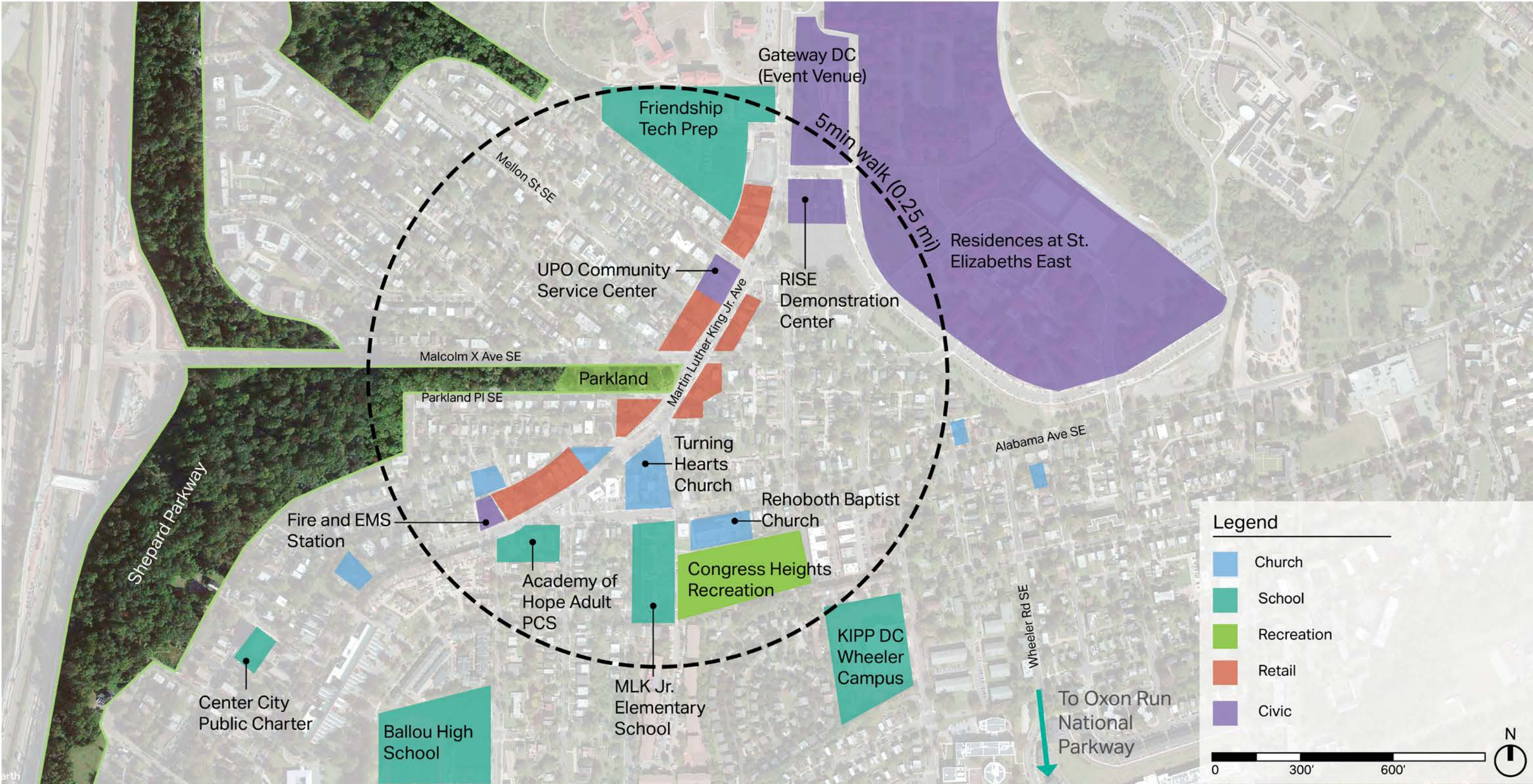
- Improve the overall appearance of the park
- Provide space for multi generational recreational activities for the community
- Provide a fun and safe play area for children
- Dissuade illegal dumping and abundant litter within the park



# Existing Conditions

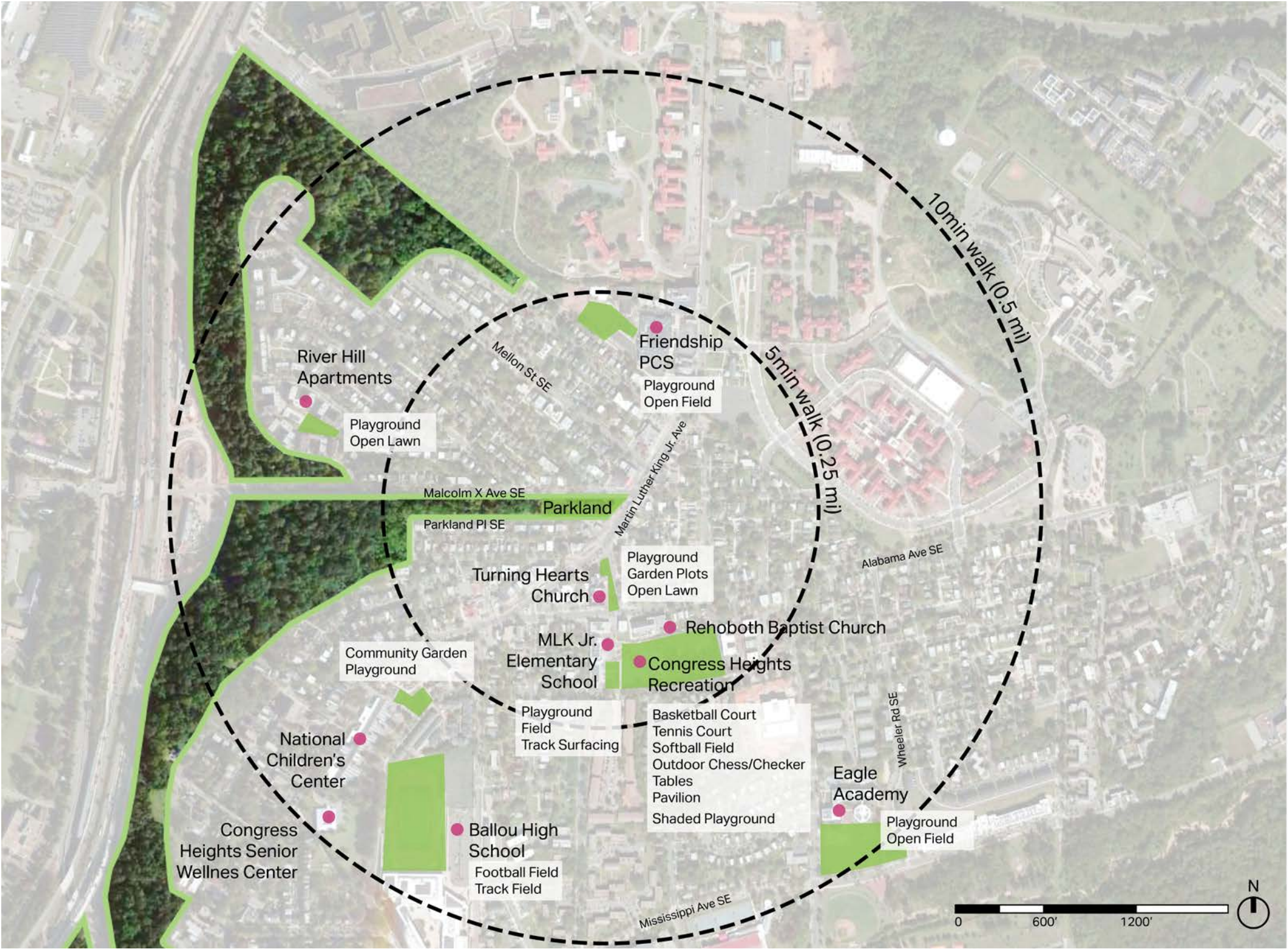


# Existing Conditions: Nearby Land Uses





# Existing Conditions: Nearby Recreation Amenities



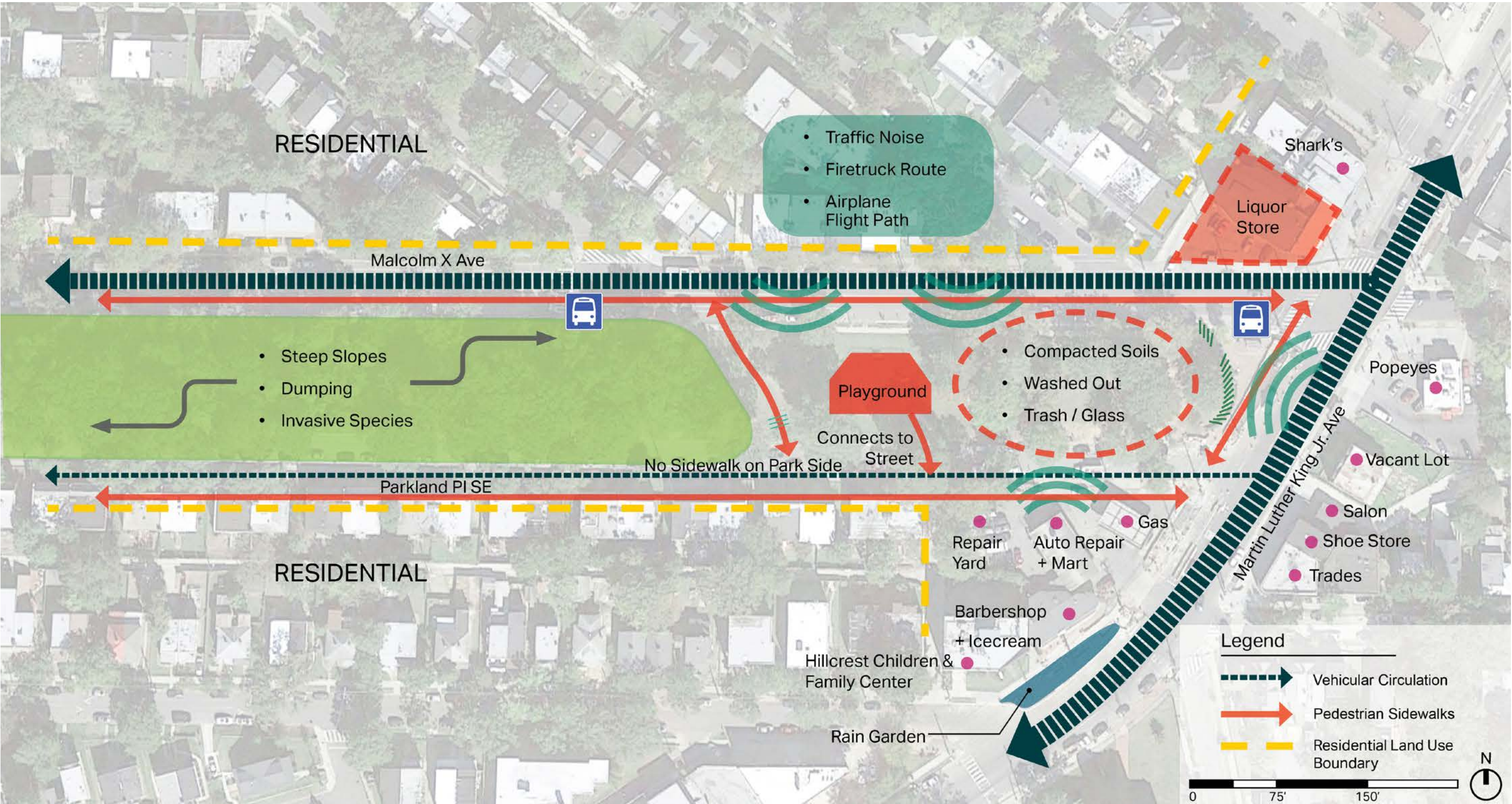


# Existing Conditions: Area of Potential Effect



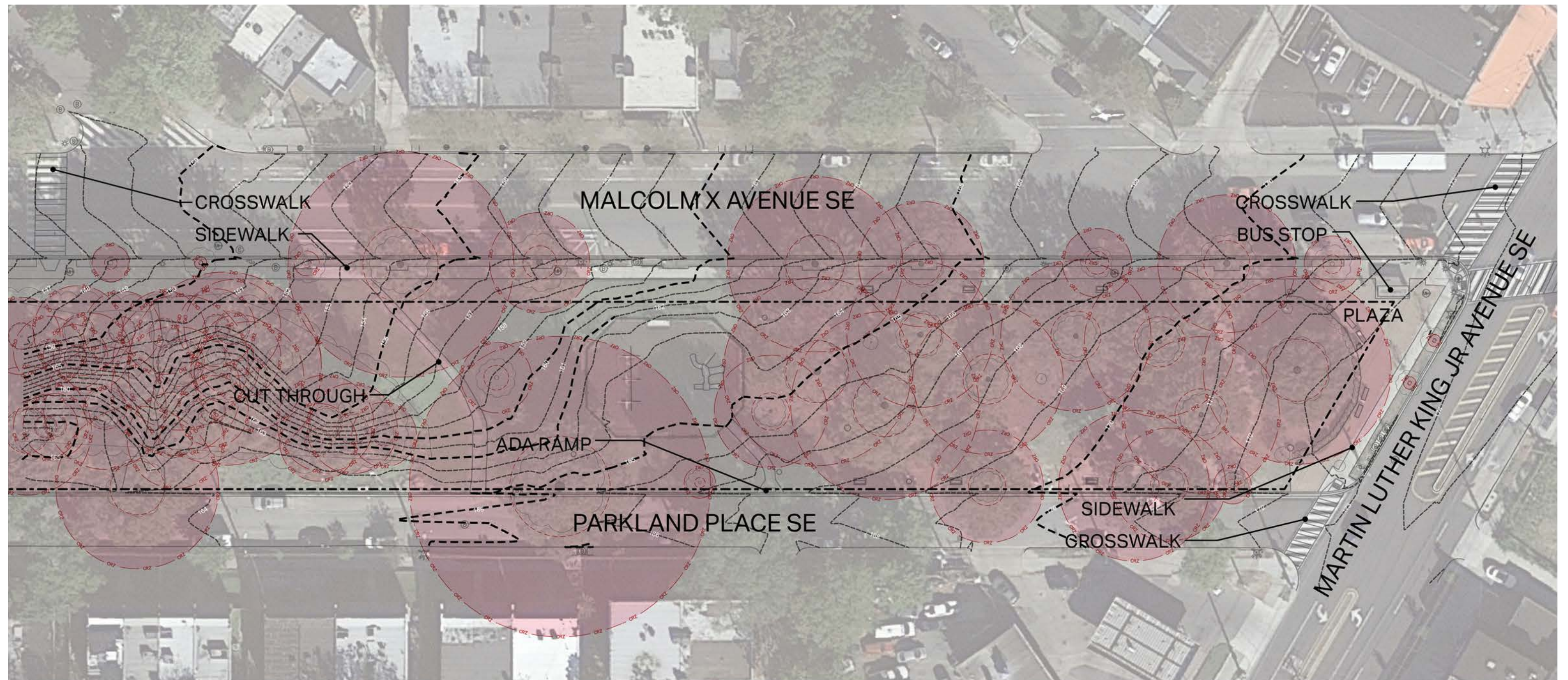


# Existing Conditions: Site Analysis



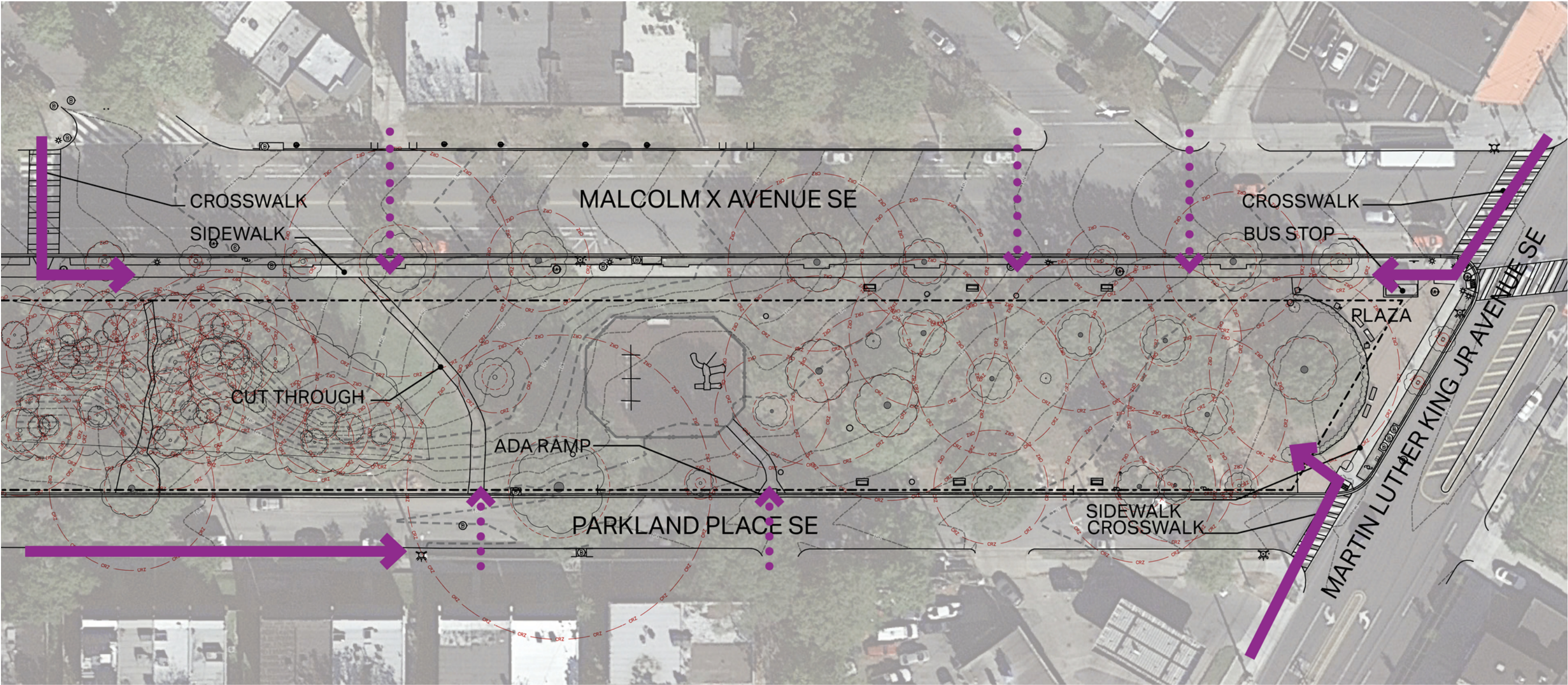


# Existing Conditions: Topography + Trees






# Existing Conditions: Circulation



 Approach Routes via Crosswalks and Sidewalks

 Observed Approach Routes Outside Crosswalks



# Site Photos: Northeast



Looking north along Martin Luther King Jr. Avenue, the Parkland site has a busy intersection with a high volume of vehicular traffic and no shade at the plaza.



Looking west along Malcolm X Avenue, adult uses discourage youth from using the park. Despite being prohibited, alcohol use occurs in the park.



# Site Photos: Southeast



Looking northwest from Martin Luther King Jr. Avenue, significant portions of the site show signs of soil compaction and erosion.



Looking west along Parkland Place, the site has exposed tree roots and lacks groundcover.



# Site Photos: Southwest



Looking northwest from Parkland Place, the playground is surrounded by fencing.



Looking east along Malcolm X Avenue, the playground is raised from street level.



# Site Photos: West



Looking northwest from Parkland Place, the western edge of the project site is wooded and contains invasive plants.



Looking northwest, an unofficial pedestrian path is worn across the site.



# Existing Conditions: Park Use

## Uses Identified by Public

- Participate in Ward 8 Woods clean-ups
- Walk
- Garden at community-installed plots
- Provide social services, such as giving food to those in need
- Gather with friends/family

## Uses Observed at the Site

- Activity occurs throughout the day
- Consumption of alcohol and illegal substances
- Lack of multi-generational recreation opportunities



# Previous Design Concepts



# Review of Previous Design Concept

## Both concepts included:

- Circulation throughout the park
- New, enlarged playground areas
- Flexible community gathering space
- Park signage
- Future trail connection to Shepherd Parkway
- Picnic areas with individual tables and grouped tables with shade structure
- Site furniture including benches, trash receptacles, bike rack, and lighting
- Education areas
- Permeable paving

## Features not included:

- Community garden
- Off-leash dog park
- Spray park
- Sandbox
- Restrooms



# Previously Proposed Design Concepts

**Concept A: Neighborhood National Park w/ Fitness Loop**



**Concept B: Neighborhood National Park w/ Playground & Nature Play**





# Public Engagement + Agency Comments



# Public Engagement Process

- Held a Public Meeting in October 2022 that kicked off a 60-day public comment period
- Met with the District Department of Parks and Recreation and Deputy Mayor's Office for Health and Human Services
- Presented materials during an Anacostia Coordinating Council meeting
- Conducted events to reach a range of the public
  - On-site at Parkland
  - Ballou High School
  - Congress Heights Senior Wellness Center
  - Oxon Run Park Green Fair





# Public Comment Summary: Desired Visitor Use and Experience

- Participate in events
  - Movie night
  - Music performances
  - Yoga classes
  - Church services/ministry
  - Dances
- Gather with friends/family
  - Drum circle
  - Chess tables
- Use playground
- Explore history + nature
- Gardening
- Exercise
  - Cardio
  - Walking
  - Jump rope (double dutch)
- Accommodate visitors' accessibility needs
- Enjoy amenities for all ages
- Picnic
- Combat dumping
- Have safe experience



# Revised Design Concept



# Revised Park Design Approach

## Incorporate and Adapt Existing Park Features

- Tree canopy
- Circulation patterns
- Topography
- Playground use





# Review of Revised Design Concept

## Revised Features

- Simplified circulation linking the park
- New, enlarged playground areas
- Flexible community gathering space
- Park signage and potential future commemorative location
- Future trail connection to Shepherd Parkway
- Picnic areas located at multiple locations within park
- Site furniture including benches, trash receptacles, bike rack, and lighting
- Permeable paving

## Removed Features

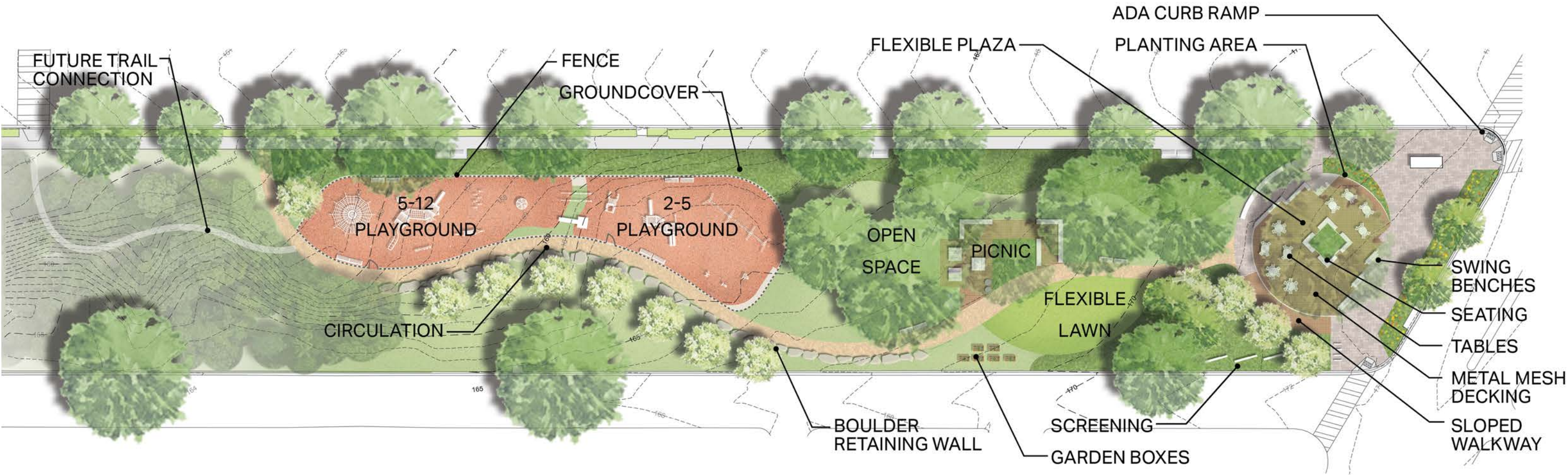
- Exercise equipment
- Picnic shade structure

## Added Features

- Community garden
- Grills

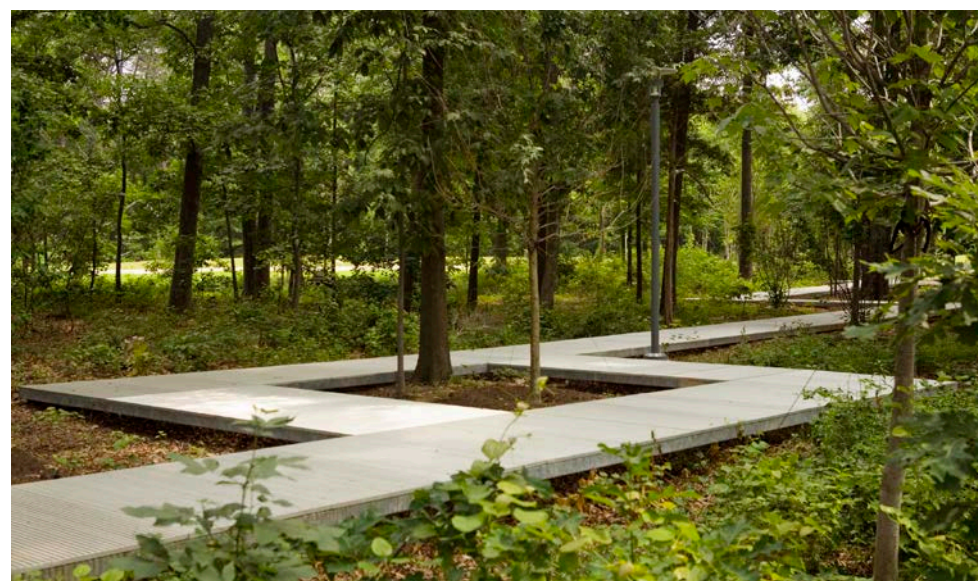


# Revised Design Concept: Overall





# Revised Design Concept: Character Images





# Revised Design Concept: Materials



Metal decking would use a darker color that would be compatible with the park environment.



The decking material has been deployed in a number of landscapes, both urban and natural.



The metal decking material comes in multiple formats, including one that would accommodate high-heeled footwear and is slip-resistant.



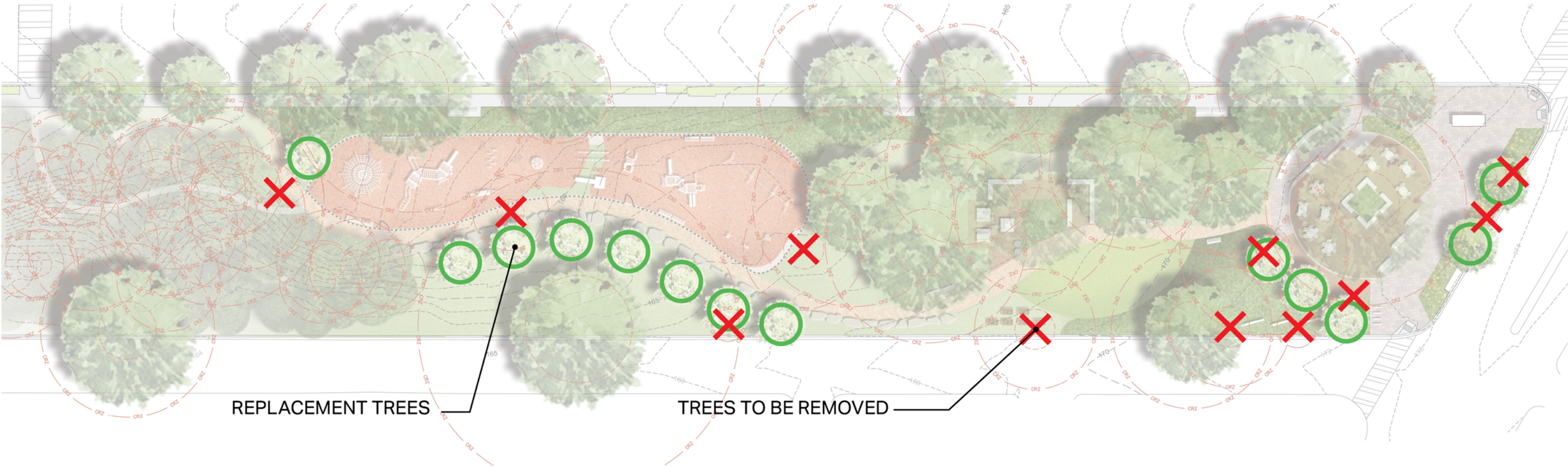
The decking would offer a permeable surface that would enable the retention of trees.



This metal decking has been used in at High Line Park to provide a “see-through” look while remaining ADA compliant.



# Revised Design Concept: Tree Removal



TOTAL PROPOSED TREES REMOVED: 11

TOTAL PROPOSED REPLACEMENT TREES 13

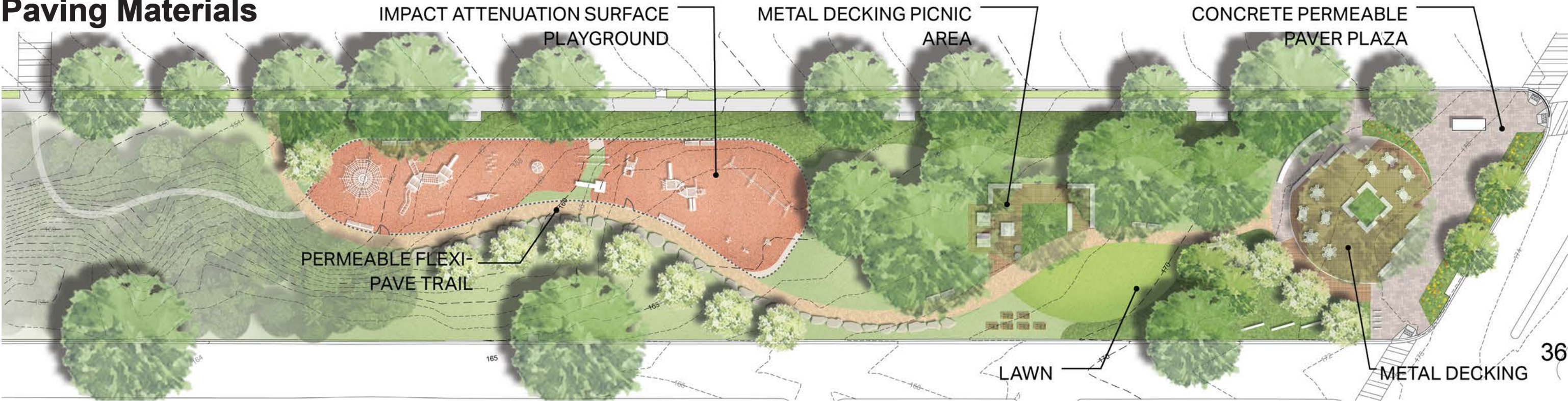


# Revised Design Concept: Circulation & Paving Materials

## Site Circulation



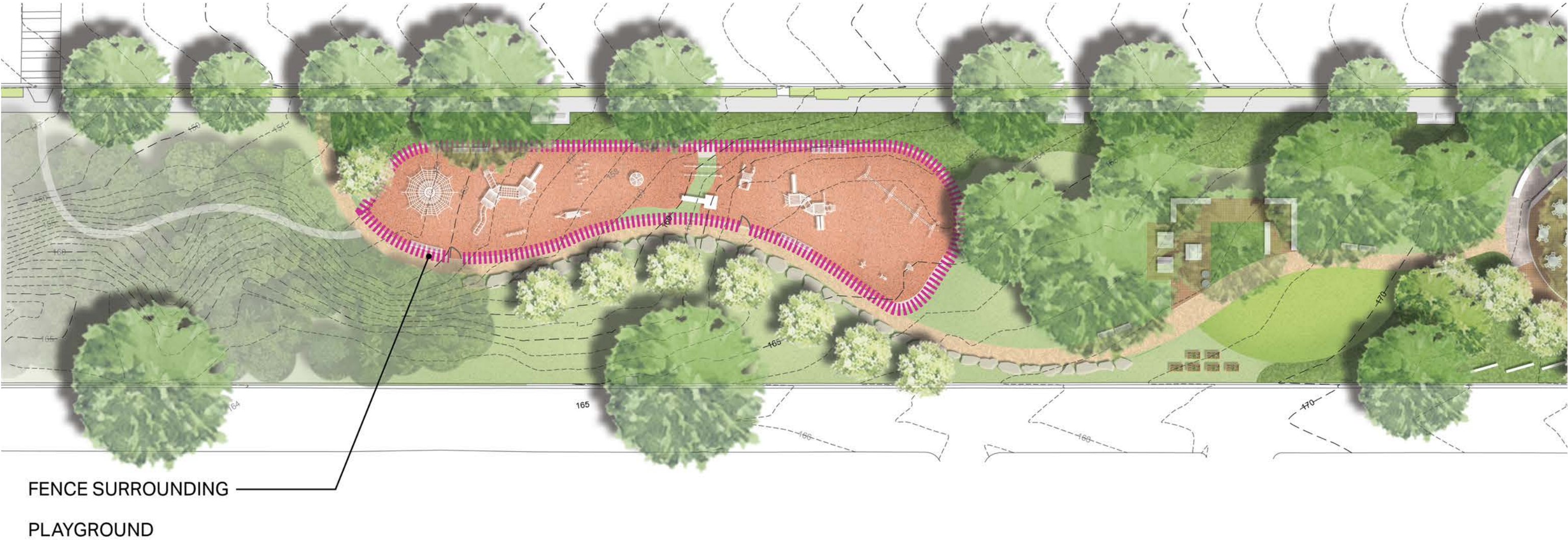
## Paving Materials





# Revised Design Concept: Fencing

## Playground Fencing





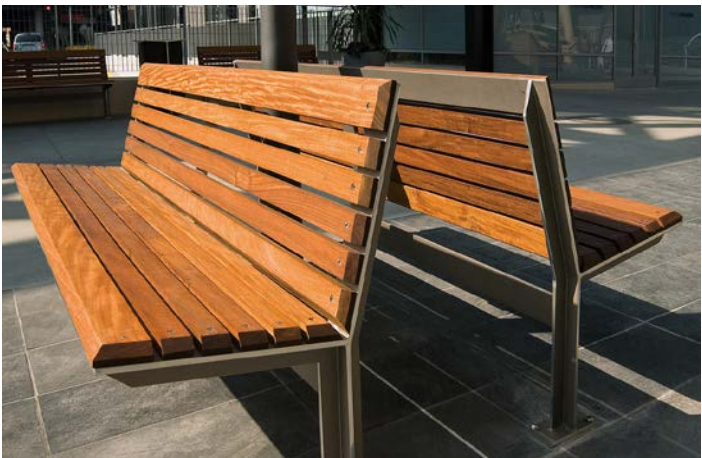
# Revised Design Concept: Park Amenities



Swing Bench



Bike Rack



Bench



Accessible Table



Garden Boxes



Accessible Picnic Table



Park Grills



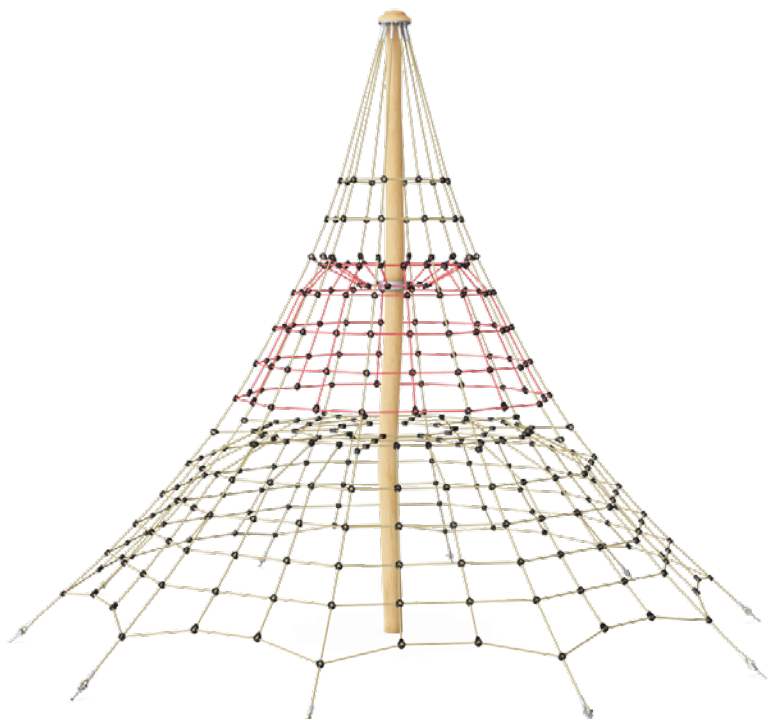
Trash / Recycling



# Revised Design Concept: Nature Play Equipment



Auditory Play



Tree Climber



Multi-tiered Playset



Carousel



Balance Poles



Hammock



Swingset Featuring ADA and Basket Swings



Stilts



# Revised Design Concept: Comparison

## Previous Concepts



## Current Concept





# Revised Design Concept: Flexible Plaza





# Revised Design Concept: Playground





# How Can You Submit Comments?

- **Comment Online:** Submit your comments by December 9, 2023 via the NPS's Planning, Environment & Public Comment (PEPC) page: <https://parkplanning.nps.gov/parkland>
- **Comment by mail:** Mail or hand-deliver written comments to park headquarters at  
  
National Capital Parks-East  
Attn: Parkland Rehabilitation/Superintendent  
National Park Service  
1900 Anacostia Drive SE  
Washington, DC 20020
- **Mailed comments** must be postmarked by **December 9, 2023** to receive consideration
- Before including personal identifying information in your comment, you should be aware that your entire comment – including your personal identifying information – may be made publicly available at any time. While you can ask us in your comment to withhold your personal identifying information from public review, we cannot guarantee that we will be able to do so.



# Next Steps

The NPS will take the following next steps at the end of the public comment period:

- Receive and review public comments
- Refine design to incorporate comments, including selection of park amenities and play equipment
- Finalize documents



# Questions + Answers

