



CURRENT CONDITION, APRIL 2009.

NATIONAL MALL RESTORATION: REHABILITATE LINCOLN MEMORIAL REFLECTING POOL AND SURROUNDING AREA

SUBMITTED BY THE NATIONAL PARK SERVICE

WITH:

SASAKI ASSOCIATES, INC.

RTKL ASSOCIATES, INC.

ROBINSON & ASSOCIATES

DELON HAMPTON & ASSOCIATES

PAUL WADDELOVE & ASSOCIATES, INC.

CONCEPT SUBMITTAL

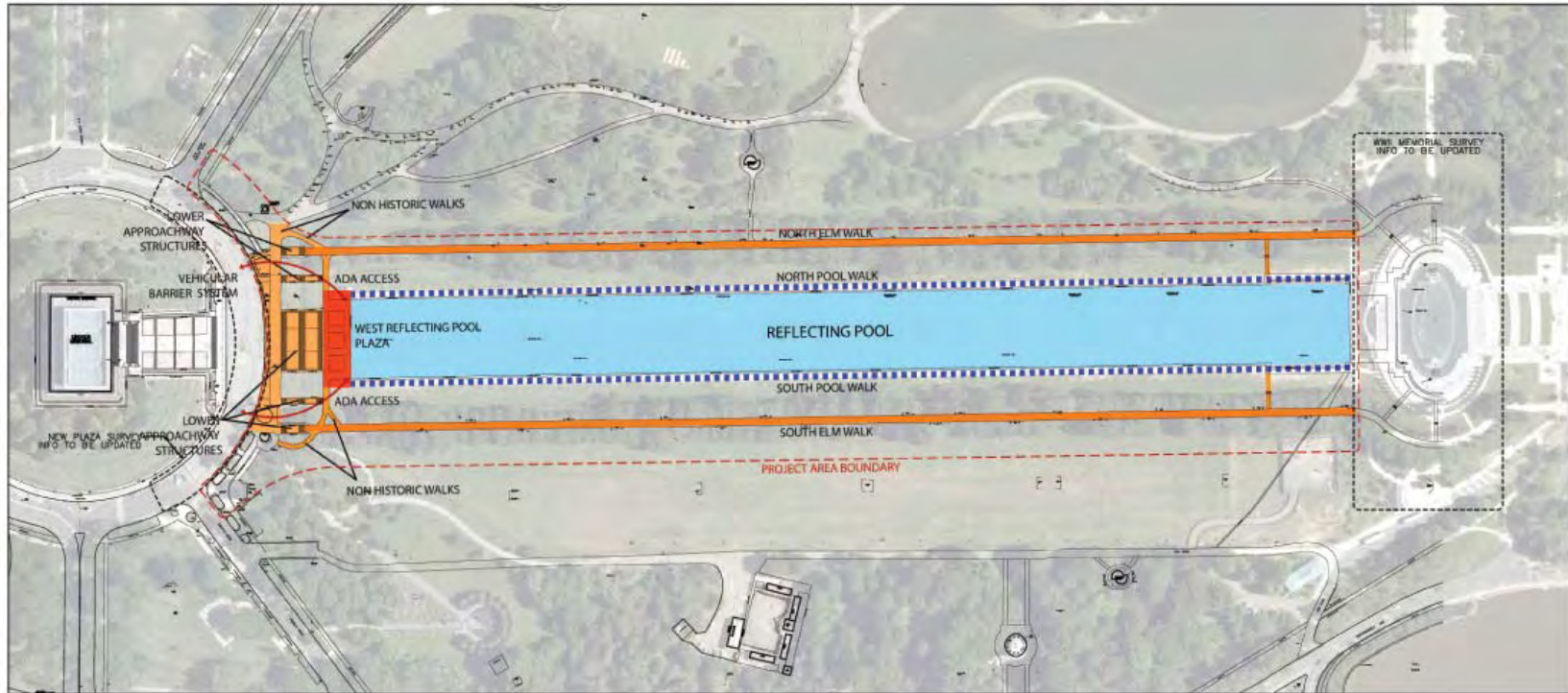
WASHINGTON, D.C.

1

INTRODUCTION AND ANALYSIS



Rehabilitate Lincoln Memorial Reflecting Pool



PROJECT PROGRAM

REHABILITATE LINCOLN MEMORIAL REFLECTING POOL AND SURROUNDING AREA
 NATIONAL PARK SERVICE
 NATIONAL MALL 150274





SIDEWALKS UNDER THE ELMS ARE IN DISREPAIR, AND MUST BE REPLACED



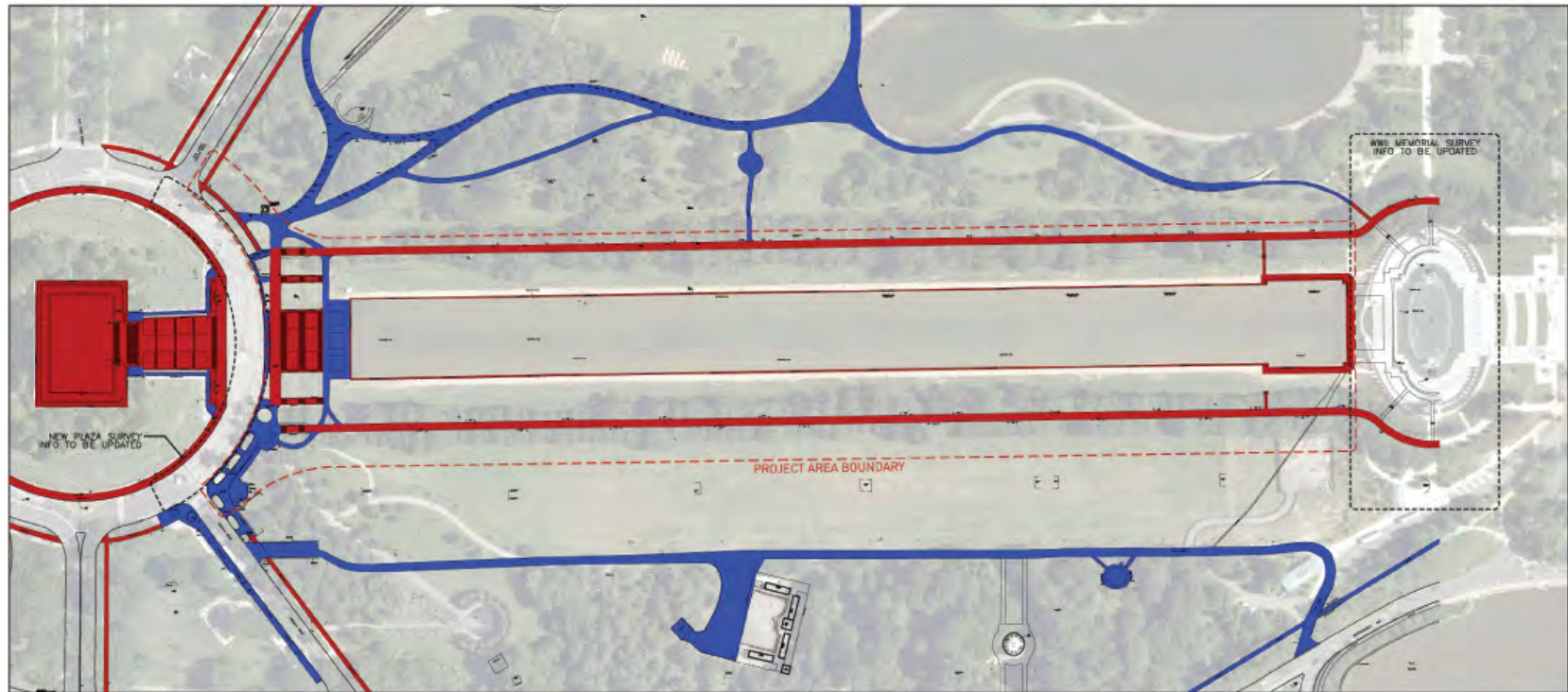
NEW WALKS FROM THE LINCOLN MEMORIAL TO THE NEW WWII MEMORIAL ARE NEEDED



A PERMANENT SECURITY BARRIER MUST BE PROVIDED AT THE LINCOLN MEMORIAL PLAZA TO REPLACE THE TEMPORARY PRECAST CONCRETE BARRIERS SHOWN ABOVE



ANNUAL CLEANING OF THE REFLECTING POOL IS NECESSARY AND REQUIRES LARGE EQUIPMENT TO REMOVE SLUDGE. ONE OF THE GOALS OF THE PROJECT IS TO IMPROVE WATER QUALITY AND SUSTAINABILITY



HISTORICAL SIGNIFICANCE

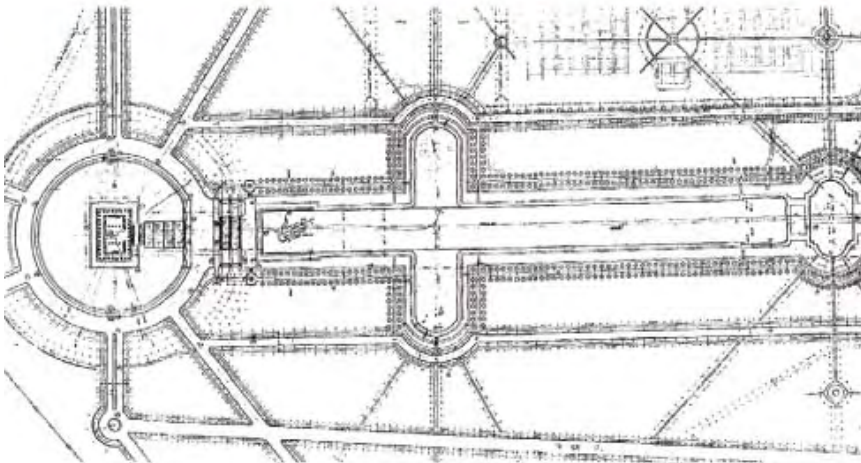
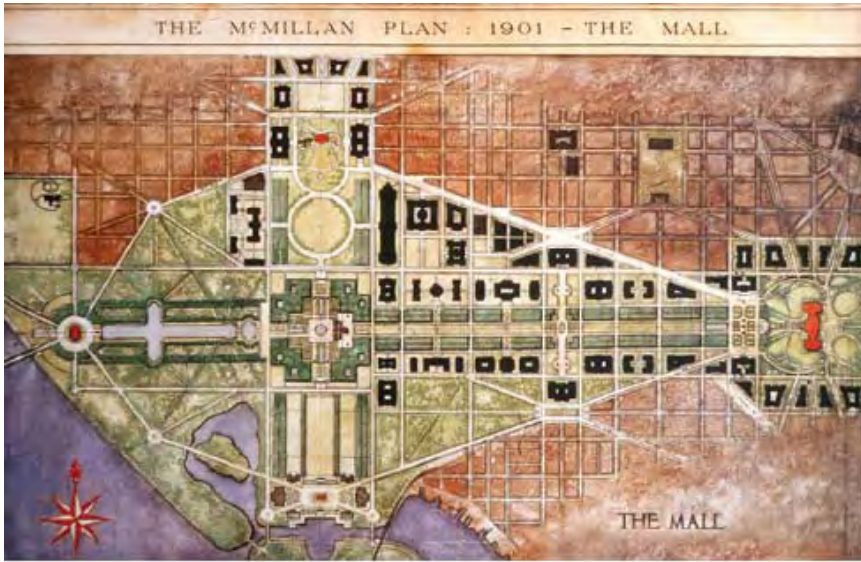
REHABILITATE LINCOLN MEMORIAL REFLECTING POOL AND SURROUNDING AREA
 NATIONAL PARK SERVICE
 NATIONAL MALL 150274

HARDSCAPE FEATURES OF NON-HISTORIC SIGNIFICANCE (POST 1933) ■
 HARDSCAPE FEATURES FROM THE PERIOD OF HISTORICAL SIGNIFICANCE (1914 - 1933) ■

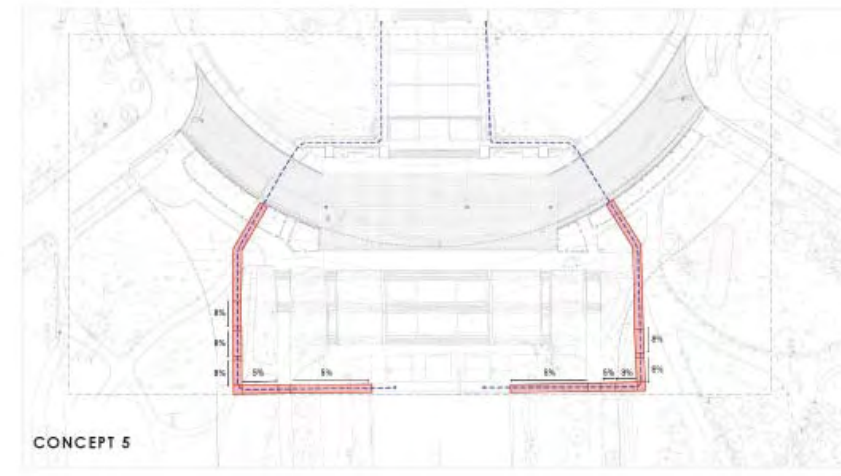
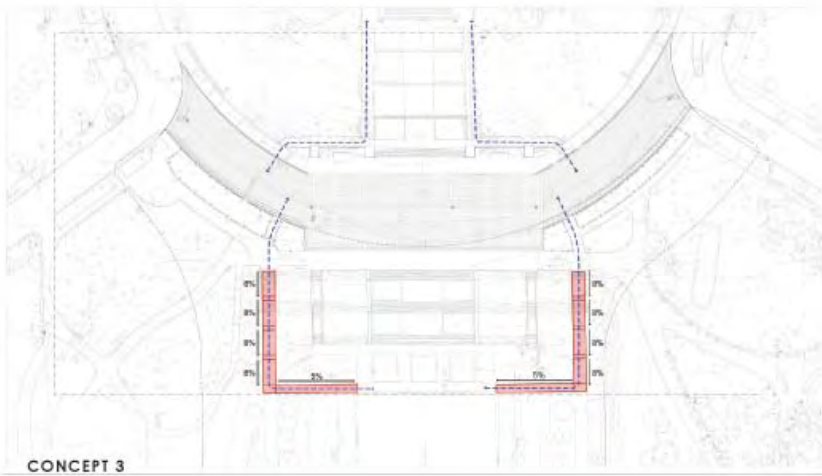
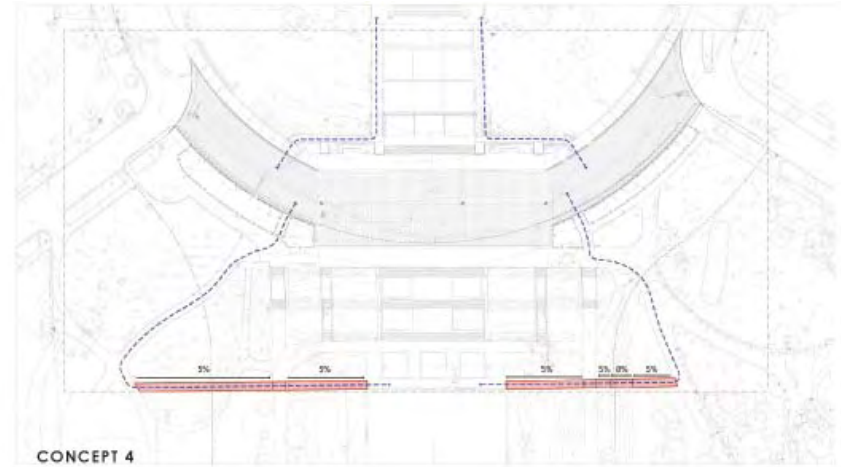
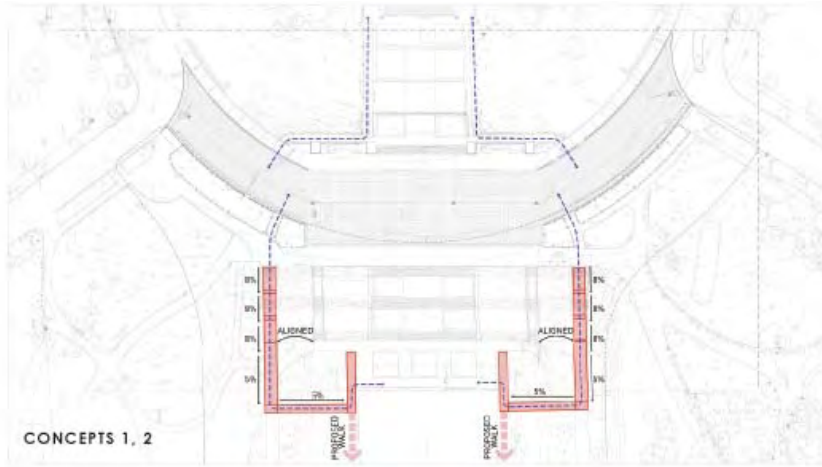




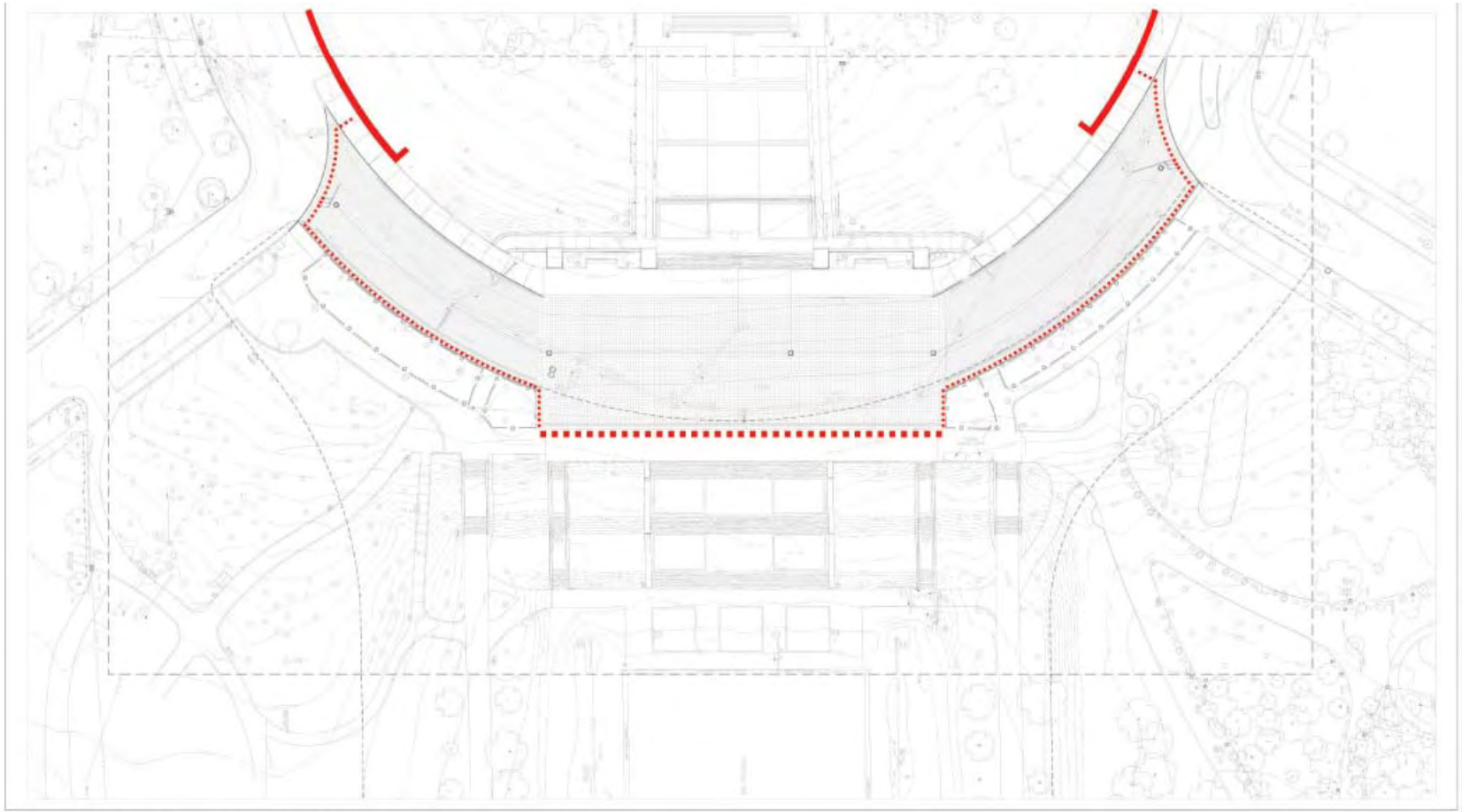
Rehabilitate Lincoln Memorial Reflecting Pool



Rehabilitate Lincoln Memorial Reflecting Pool

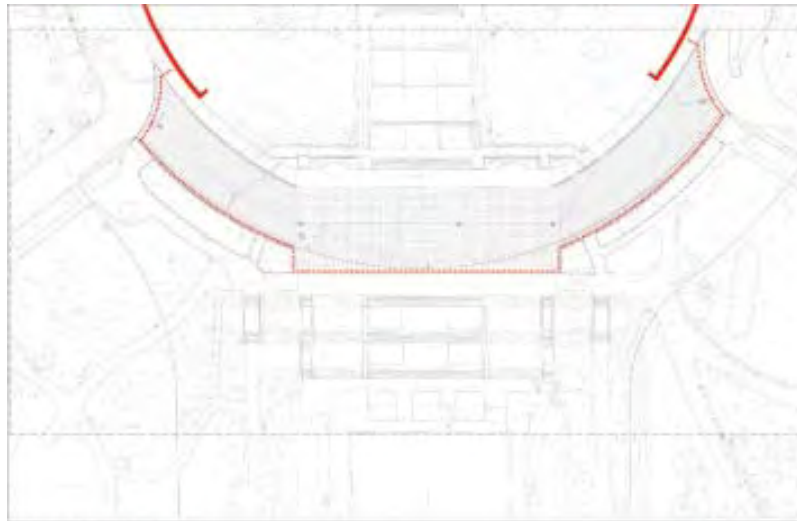


ACCESSIBILITY CONCEPTS



VEHICULAR BARRIER - EXISTING CONDITIONS

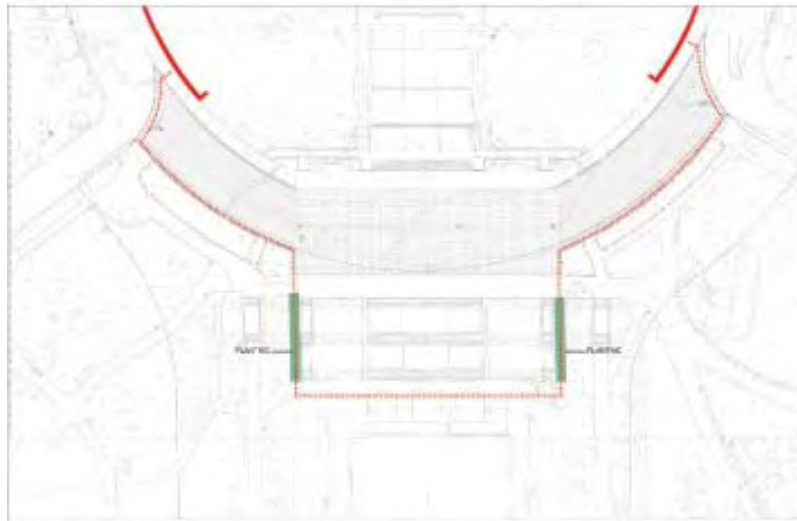




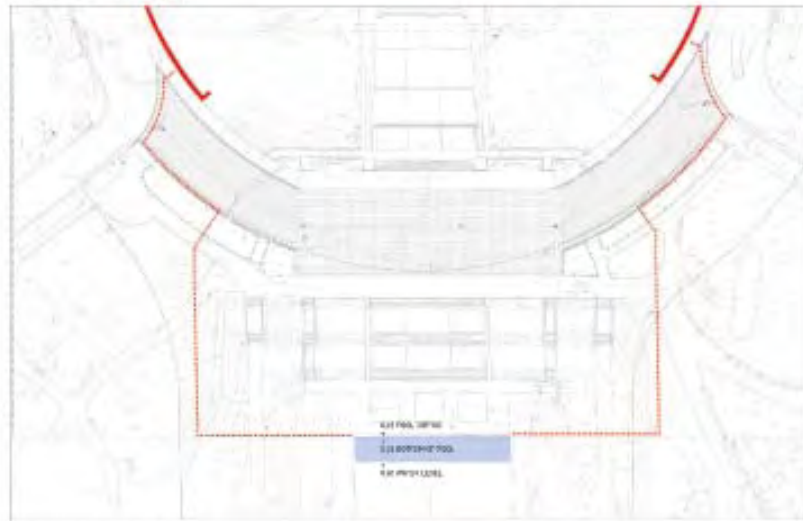
SECURITY OPTION 1



SECURITY OPTION 3



SECURITY OPTION 2



SECURITY OPTION 4

PREVIOUSLY CONSIDERED AND DISMISSED

Rehabilitate Lincoln Memorial Reflecting Pool



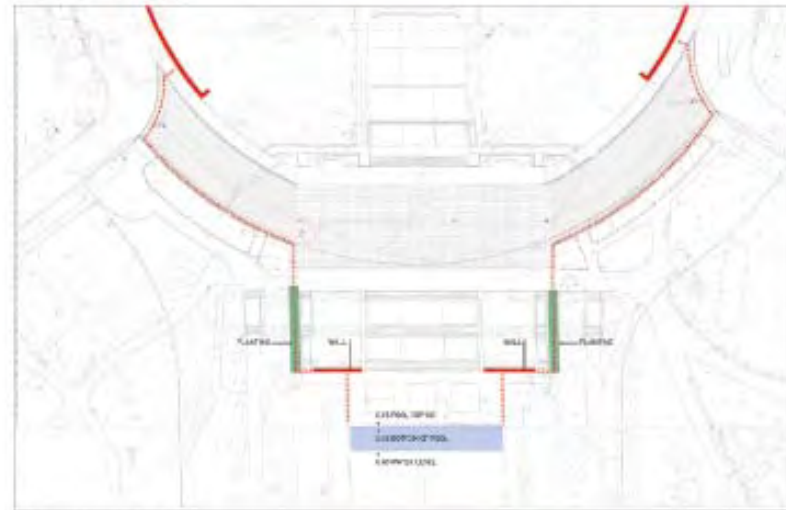
SECURITY OPTION 5



SECURITY OPTION 7

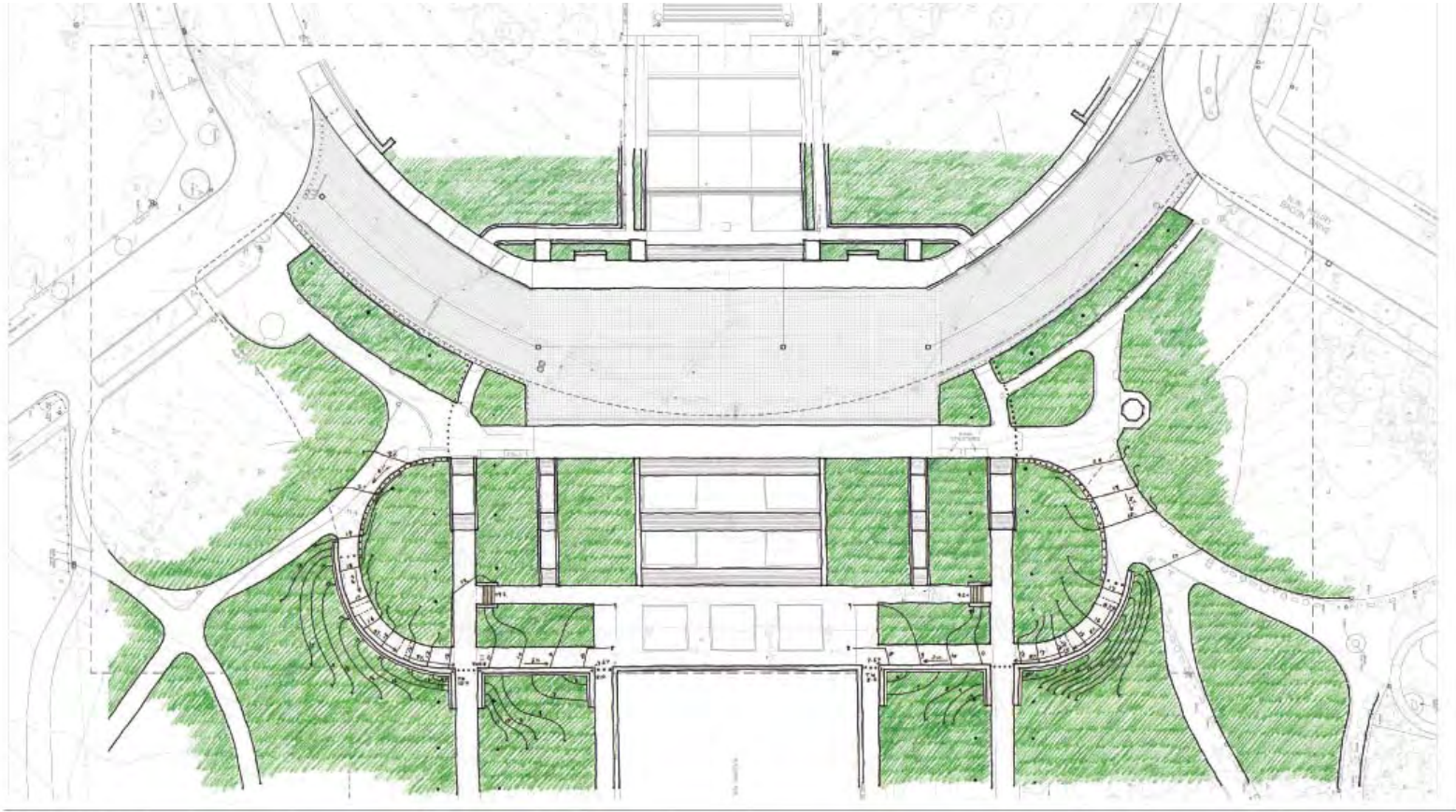


SECURITY OPTION 6



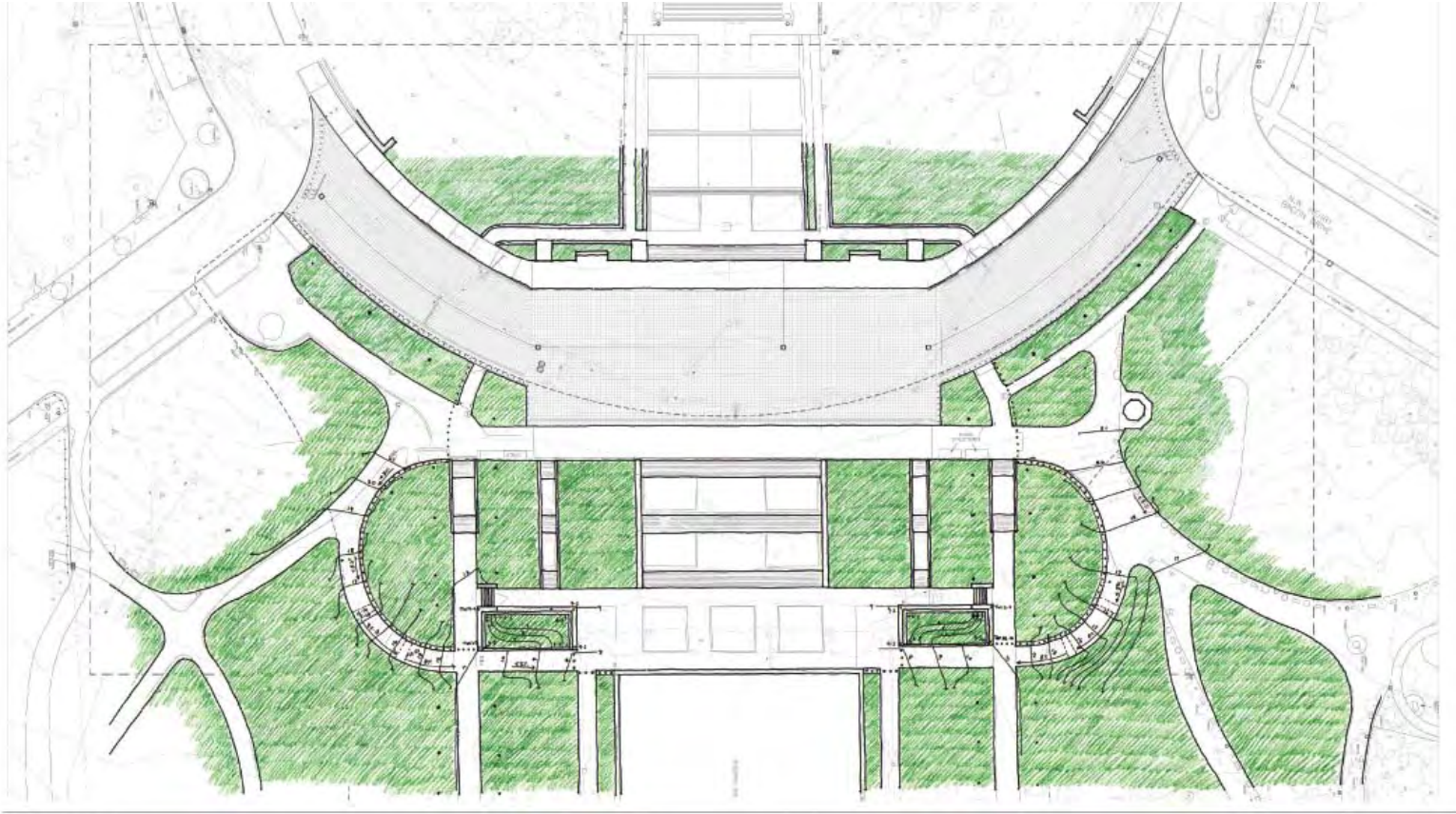
SECURITY OPTION 8

NEW ALTERNATIVES



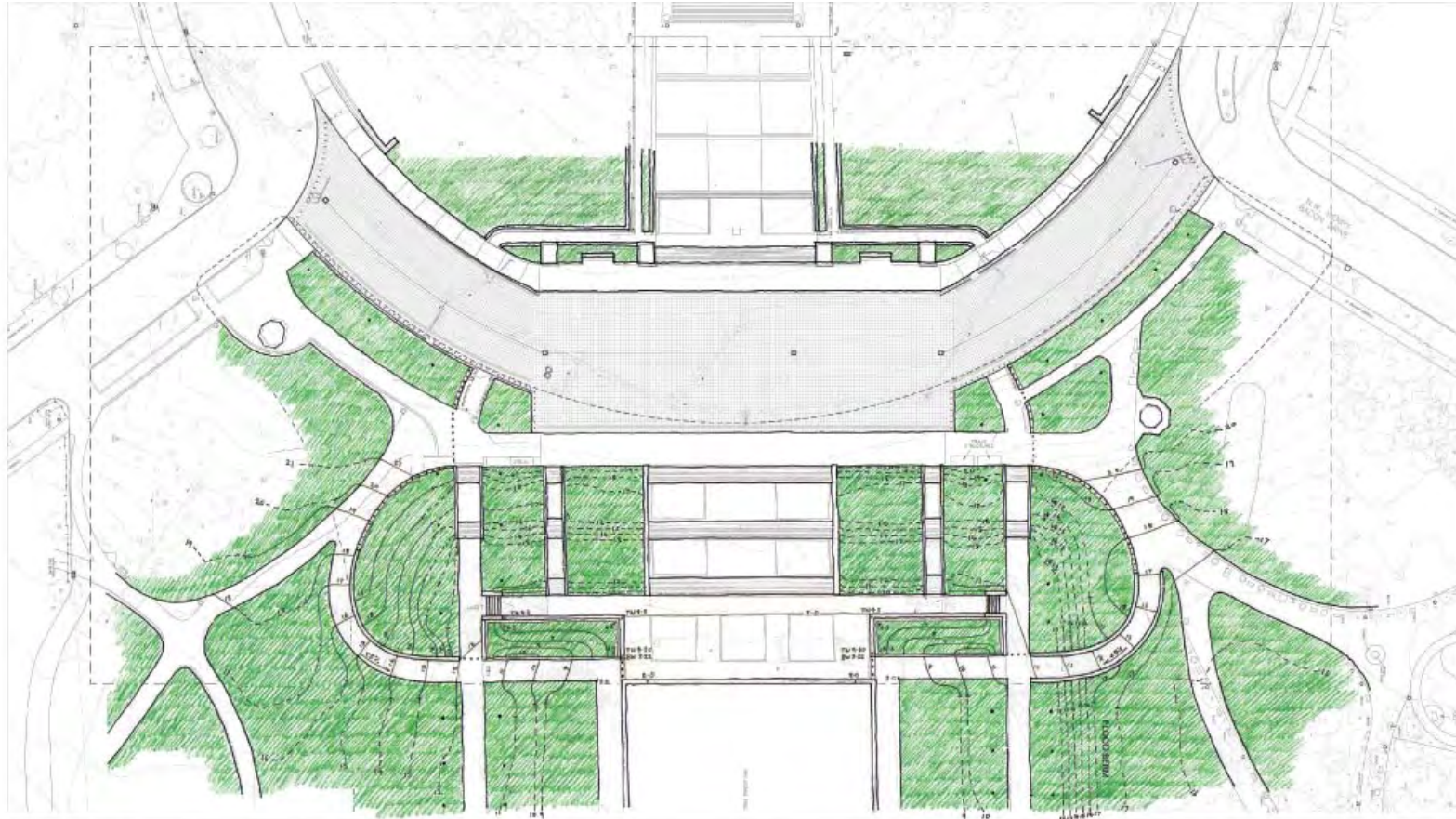
CONCEPT 1 THE SECURITY WALL ALIGNS WITH THE WEST POOL COPING, AND STAYS ON THE OUTSIDE OF THE LARGE CURVED WALK TO MAKE IT LESS VISIBLE





CONCEPT 2 BOLLARDS FOLLOW THE WHOLE LENGTH OF THE LARGE CURVED WALK, LEAVING IT VISUALLY AS OPEN AS POSSIBLE



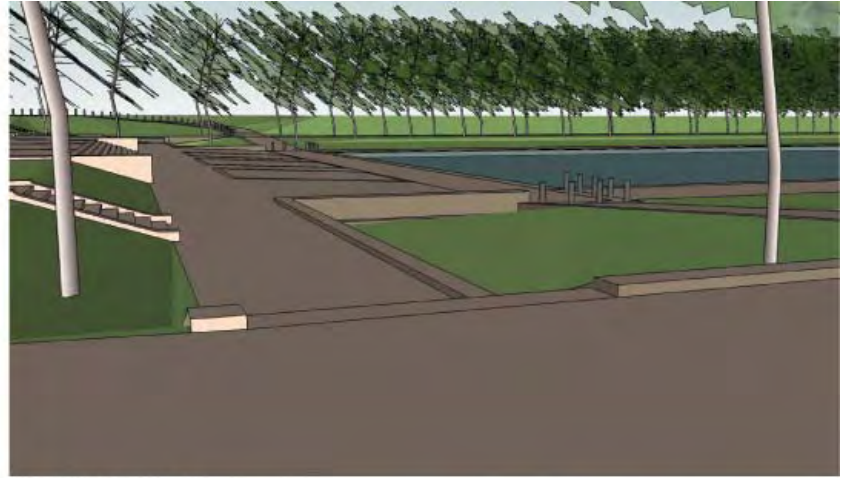


CONCEPT 3 IN THIS NON-SYMMETRICAL SCHEME, RETAINING WALLS FOLLOW THE LARGE CURVED WALK AND SET IT INTO THE GRADE OF THE FLOOD BERM ON THE NORTH SIDE

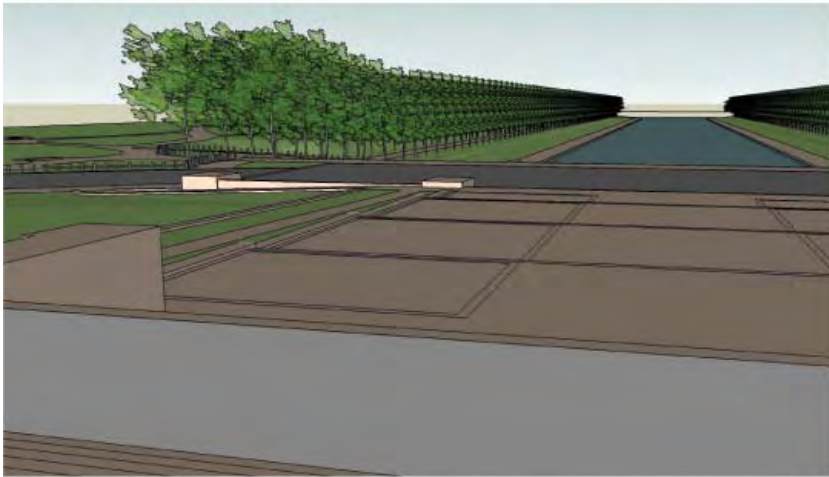




BIRD'S EYE VIEW OF PROPOSED CONCEPT 2



VIEW NORTH OF LOWER PLAZA



VIEW EAST FROM UPPER PLAZA



VIEW EAST ALONG SOUTH ELM WALK



30" WALL AT WASHINGTON MONUMENT



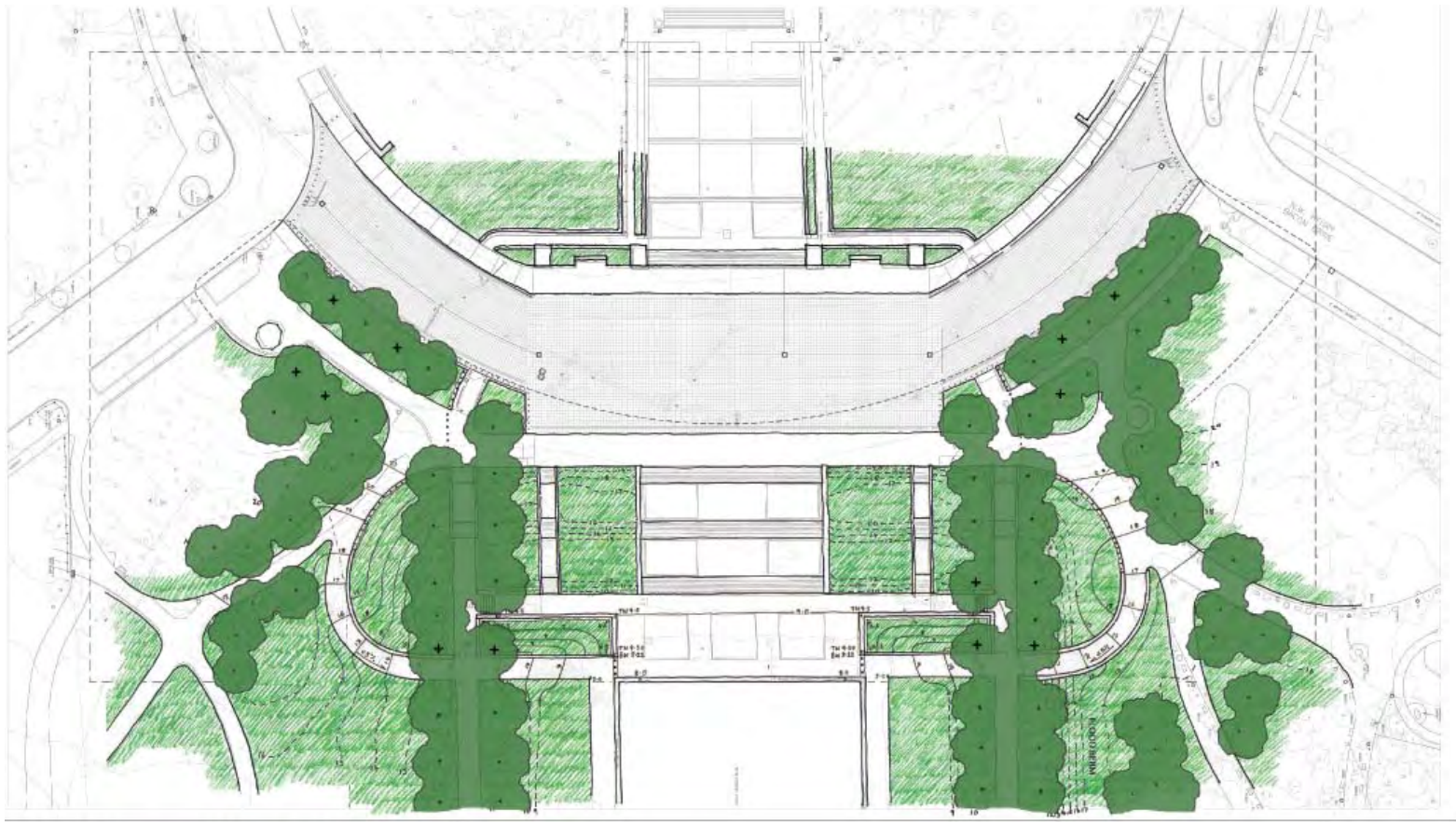
Rehabilitate Lincoln Memorial Reflecting Pool



VIEW EAST TOWARD SOUTH FIRM WALK - WITH BOLLARDS



VIEW EAST TOWARD SOUTH ELM WALK - WITH WALL



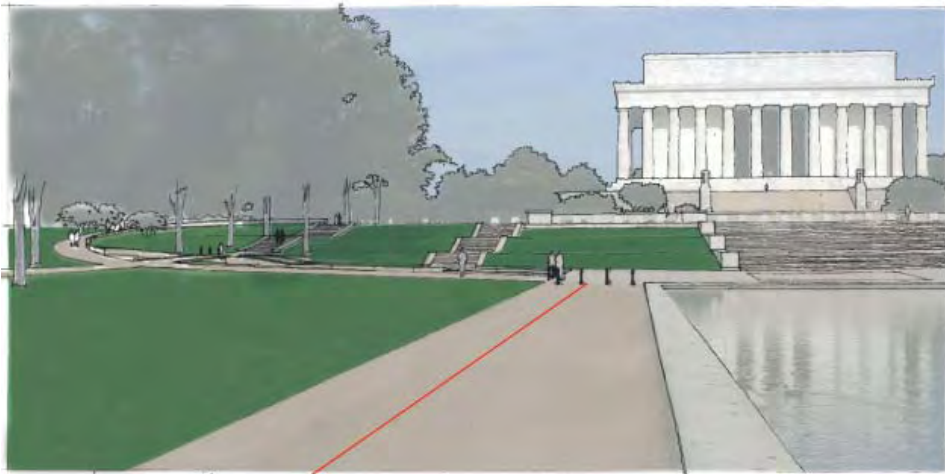
CONCEPT 3 - WITH TREE CANOPY SHOWN

THE EXISTING TREE CANOPY WILL REMAIN AS INTACT AS POSSIBLE. BASED ON AVAILABLE INFORMATION ABOUT THE EXISTING TREES, SOME OF WHICH ARE IN DECLINE, IT APPEARS THAT SEVEN TREES WILL BE REMOVED AND FOURTEEN NEW TREES COULD BE PLANTED AS INDICATED. NEW TREE LOCATIONS ARE INDICATED BY A + SYMBOL.





Rehabilitate Lincoln Memorial Reflecting Pool



Rehabilitate Lincoln Memorial Reflecting Pool