

# Chamizal National Memorial Master Plan: Crafting a New Vision

An Exploration By:  
Iylea Olson | Graduate Student  
Margaret Livingston | Faculty Advisor  
School of Landscape Architecture and Planning  
The University of Arizona



# Overall Project Goal

Craft a new vision for Chamizal National Memorial that guides the direction of transformations to enhance the image and function of the park for a variety of users and for Memorial managers.\*

\*The master plan should be **realistic** and **attainable** so that it will **retain its relevance through many generations** of park managers and will be a document that Memorial staff can refer back to over time as project funds become available.

## Approach

- master plan
- site specific designs
- planting templates
- species management plan



# Potential Users

## **Daily Users:**

- people who walk across the site to and from school and work
- students who spend time at the park during lunch
- community members who use the park for recreation

## **Occasional Users:**

- people in the community who use the park for celebrations
- people who visit the park for performances

## **One-Time Users:**

- tourists who visit specifically to see the memorial



# GOAL 1: Guide Memorial Toward More Sustainable Practices

**Water Conservation**

**Low Maintenance**

**Education through Image & Interpretation**



GOAL 2: Blend Distinct Uses within the Park

**Appropriate Transitions Between Turf and Native Planting Areas**

**Interpretation of the Memorial that Intersects with Daily Users**



## GOAL 3: Address Needs of Local Park Users

**Celebration/Gathering Areas**

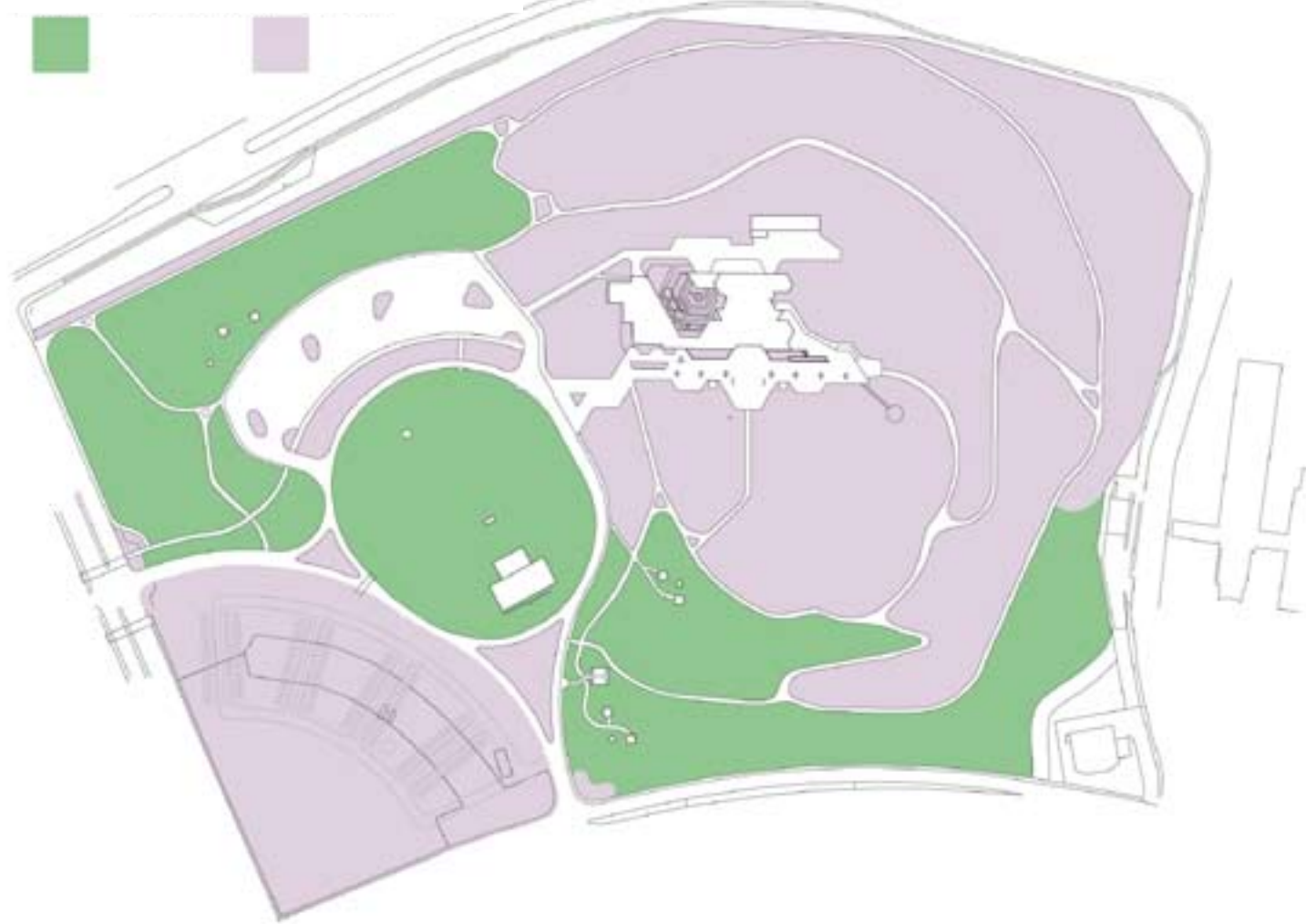
**Recreation Trails**

**Circulation To and From Border Crossing**



# Vegetation Zones

## TURF vs. NON-TURF AREAS



### What is NON-TURF?

- replacement of existing turf with native, low-water-use plants
- remove turf around visitor center

### What is TURF?

- maintain turf in areas where city park functions have highest occurrence





# Vegetation Concentration

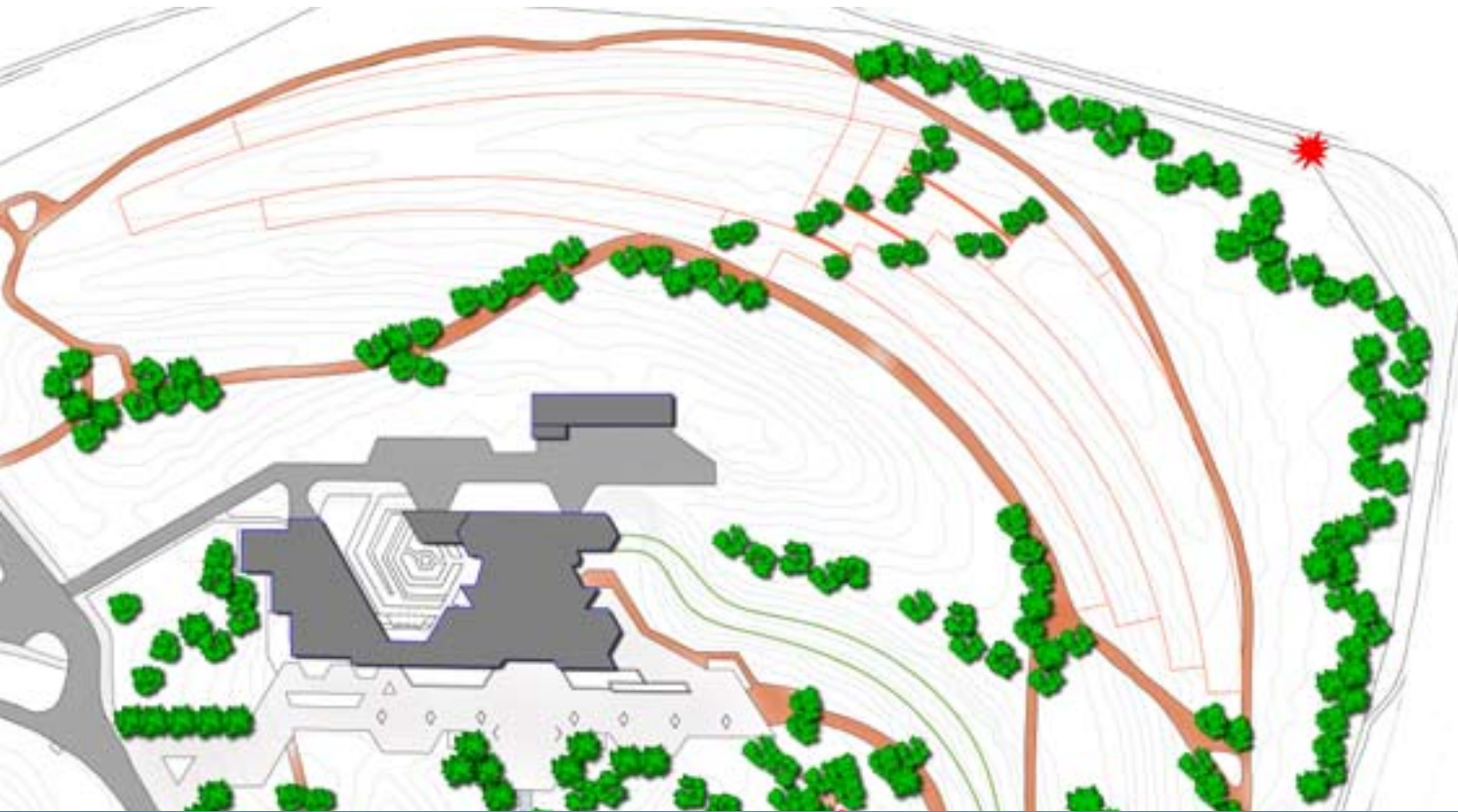


- concentrated in low areas to utilize rainwater
- used for screening and/or framing views
- used to create shade along trails and around interpretive nodes





# Terraces & Flats

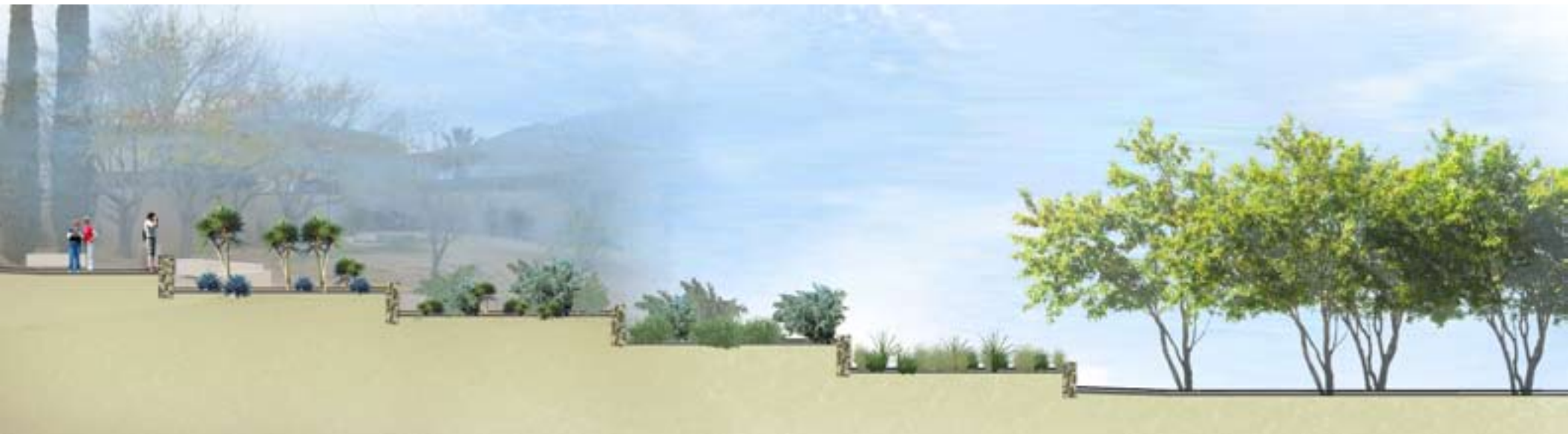


WHAT TO CONSIDER:

- erosion potential
- water harvesting
- interpretive opportunities



# Terraces & Flats





# Terraces



## Features

- interpretive/educational opportunities
- path of daily users intersects with interpretation
- habitat creation

# Erosion Control



Gabion Walls



Gabion Mattress



Mason Walls



Riprap



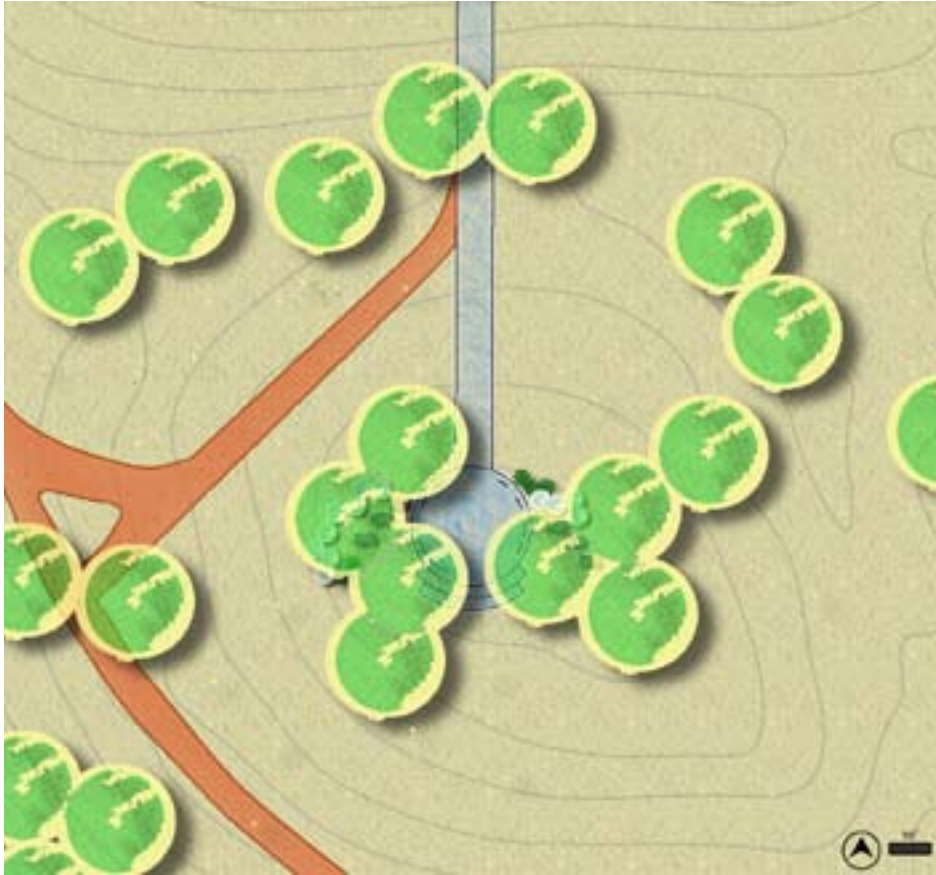


# Monument Plaza





# Monument Plaza



## Features

- native plants
- interpretive/educational opportunities
- visual connection to sister park in Mexico

- shaded rest point
- variety of seating
- enhanced visitor experience



# Monument Plaza





# Pollinator Courtyard



# Pollinator Courtyard



## Features

native plants that attract various pollinators  
interpretive/educational opportunities  
shaded areas

variety of seating  
vibrant backdrop for meetings or performances

# Visitor Center Plaza





# Visitor Center Plaza



## Features

- native, sculptural plants
- interpretive/educational opportunities
- additional visual interest



# Memorial Entrance



# Memorial Entrance



## Features

variety of color and texture to emphasize park entrance  
low vegetation to maintain visibility into the site





## GOAL 3: Address Needs of Local Park Users



---

# CONTACT

Iylea Olson  
ilo@email.arizona.edu

Margaret Livingston  
mlivings@email.arizona.edu

