



Blackstone River Valley National Historical Park Draft General Management Plan

WE NEED YOUR INPUT!

The National Park Service is seeking public input on the draft Blackstone River Valley National Historical Park General Management Plan (draft plan) and Environmental Assessment. The draft plan will guide park management for the next 15 to 20 years, providing a broad conceptual framework to guide decisions for long-range park management. The plan defines the resource conditions and visitor experiences that should be achieved and maintained over time based on the park's purpose and significance, as described in the park's authorizing legislation and recently completed foundation document. This plan also sets the direction for subsequent planning efforts.

Public engagement is fundamental to our planning and environmental review process. The National Park Service invites you to help shape the park's future by contributing your ideas and concerns about the draft plan and associated environmental assessment. You can submit your comments on the project website or by e-mail, postal mail, or phone. In addition, the National Park Service will be holding three public meetings to provide an overview of the draft plan and management strategies. See additional details on page four of this newsletter and by visiting the project website at <https://parkplanning.nps.gov/blackstonegmp>.

PLAN OVERVIEW

All national parks are required to have an approved general management plan, including Blackstone River Valley National Historical Park. The plan provides broad management direction to guide park managers' decision-making for future resource protection, visitor experience, and operational needs. More detailed plans addressing the park's needs will be created through future individual projects, and these plans must be consistent with the broad management direction described in this general management plan.

General management plans are intended to be long-term documents that establish and articulate a management philosophy and framework for decision-making and problem-solving in national park system units. The draft plan for Blackstone River Valley National Historical Park has three primary components:

Chapter 1: Introduction to the Plan describes the park, its resources and current conditions, and the purpose and need for the planning effort. This chapter also describes how this plan meets the statutory requirements of a general management plan.

Chapter 2: General Management Direction provides the vision for future management and the general management direction. The park's congressionally authorized boundary is described by management area or zone. Each management area's goals are described by aspirational desired conditions for cultural and natural resources, visitor experience, facilities, and visitor services. Once finalized, park managers will use the desired conditions for each management area as a high-level guide for making detailed decisions about a variety of programmatic and operational needs.

Chapter 3: Management Strategies and Actions describes high-level management strategies that may be applied to achieve desired conditions and the management vision laid out in chapter 2. The management strategies and actions focus on cultural resources management, natural resources management, visitor experience and services, and partnerships. Management strategies associated with indicators, thresholds, and visitor capacities identified to help manage visitor use at sites under direct park control are detailed in an appendix.

The environmental assessment evaluates the environmental impacts of the actions proposed in the draft plan. Following the September and October 2023 public comment period, the National Park Service will revise the environmental assessment (through errata) and the draft plan, as appropriate, before issuing a decision document and final general management plan.



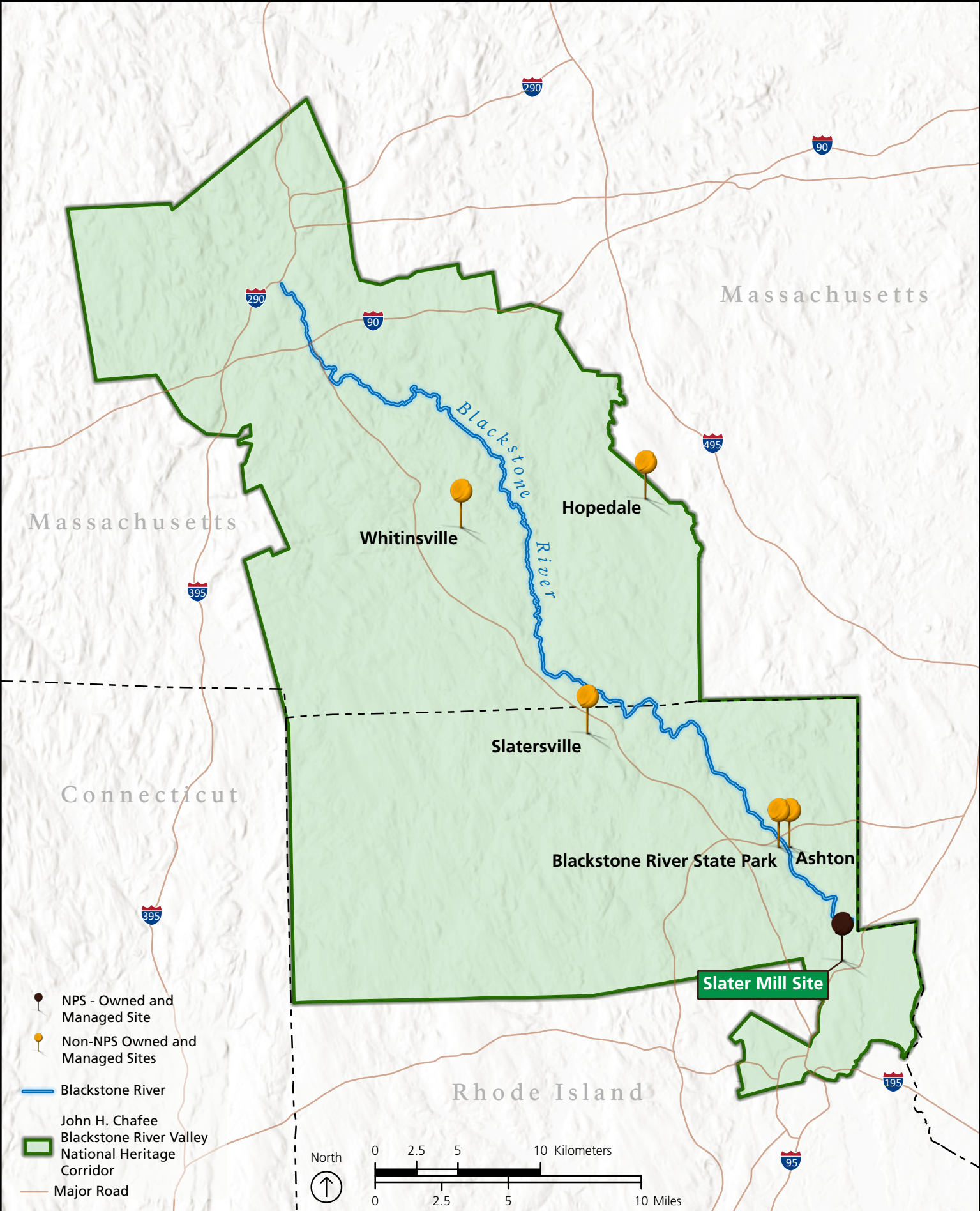
Photo Credit: Bonnie Combs



Photo Courtesy of Blackstone Heritage Corridor



Photo Credit: Bonnie Combs



HOW TO PARTICIPATE

**The National Park Service is interested in your feedback on the draft plan and environmental assessment.
You can submit comments in the following ways:**

By phone:

401-725-8638

By e-mail:

blrv_info@nps.gov

On the web (preferred method):

<https://parkplanning.nps.gov/blackstonegmp>

By mail:

Blackstone River Valley
National Historical Park
General Management Plan
ATTN: Superintendent
67 Roosevelt Ave.
Pawtucket, RI 02860

Please visit the project planning website at <https://parkplanning.nps.gov/blackstonegmp> for information about when to comment.

Public Meetings:

You are also invited to attend one of three public meetings in September to learn more and ask questions about the draft plan and environmental assessment. The National Park Service will host two in-person meetings and one virtual meeting. Please visit the project planning website at <https://parkplanning.nps.gov/blackstonegmp> for meeting dates, times, and locations.



Photo Credit: Silvana Della



Photo Credit: Suzanne Buchanan



Photo Credit: Bonnie Combs

NOTE: Comments will not be accepted by fax or any other method than those specified above. Please also note that your entire comment – including personal identifying information such as your address, phone number, and e-mail address – may be made publicly available at any time. While you can ask us in your comment to withhold your personal identifying information from public review, we cannot guarantee that we will be able to do so. Comments submitted by individuals or organizations on behalf of other individuals or organizations will not be accepted.