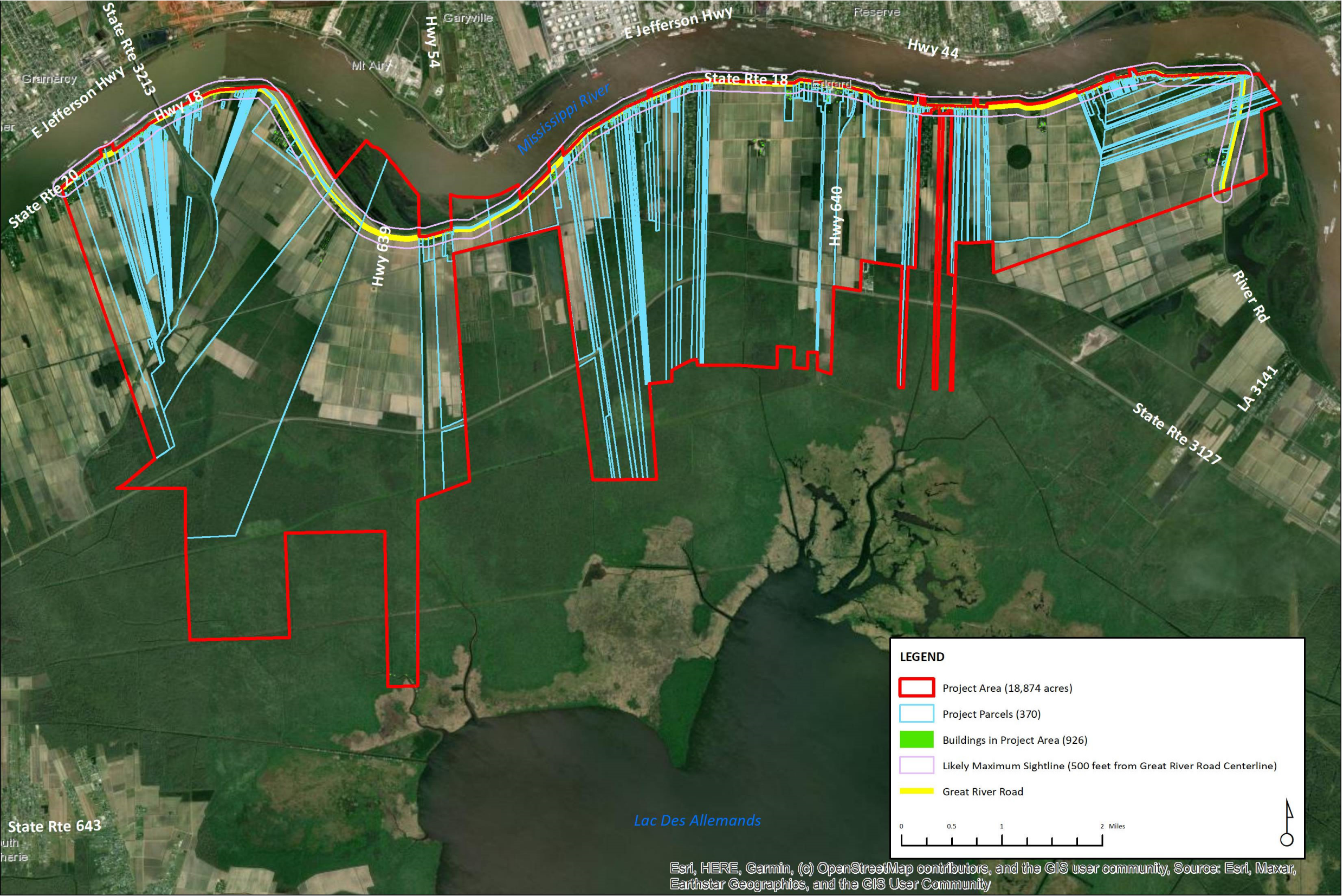


Appendix A: Fieldwork Boundary Map



Map 1. Map depicting the proposed survey area for project, to include a maximum of 185 selected parcels of land adjacent to the Great River Road in St. John the Baptist Parish, Louisiana. Only resources visible from the public right-of-way will be documented, and a buffer of 500 feet from the roadway is used to indicate the likely maximum sightline. Points for above-ground primary resources constructed by 1975 will be created during preliminary desktop survey following the methodology outlined in this Research Design. Sources: Appraisal district data from St. John the Baptist Parish, base map from ESRI, overlay by HHM.