

National Park Service  
U.S. Department of the Interior

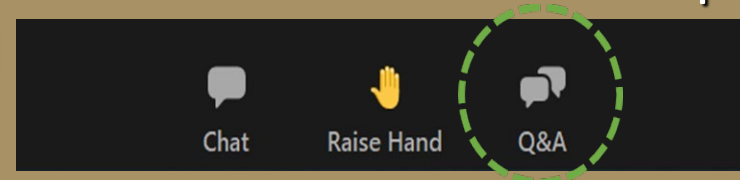
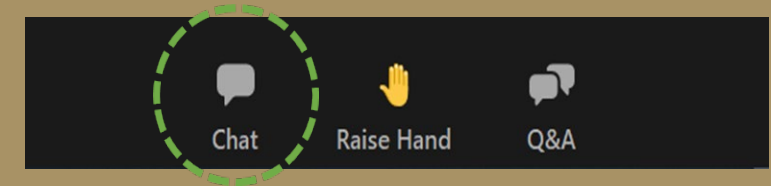
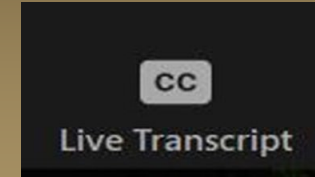


# Capitol Reef National Park Road and Parking Rehabilitation June 21, 2023

EXPERIENCE YOUR AMERICA

# Meeting Information

- All participants are muted and video feeds are restricted.
- To turn on closed captioning, click on the CC/Live transcript icon
- Informational presentation will be approximately 35 minutes.
- We will have approximately 30 minutes for Q&A at the end of the meeting.
- If the sound/video quality is poor, try calling into the meeting
  - 1-877-583-5247
  - Meeting ID: 811 8131 5206
  - Passcode: 311321
- If you are having technical difficulties, send a chat message to the meeting host
- If you wish to submit a question to be answered after the presentation, type it into the Q&A box at the bottom of the Zoom screen. To submit a question over the phone, press \*9 to raise your hand





National Park Service  
U.S. Department of the Interior

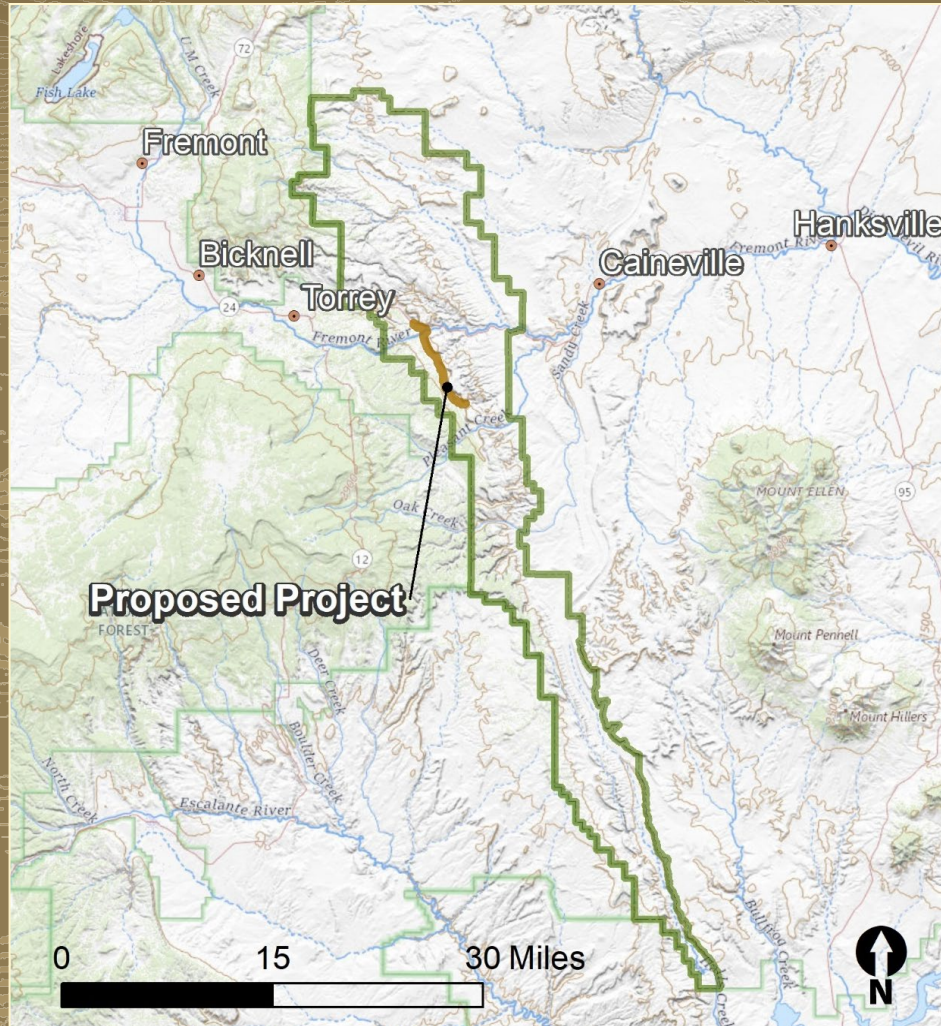


# Capitol Reef National Park Road and Parking Rehabilitation June 21, 2023

EXPERIENCE YOUR AMERICA



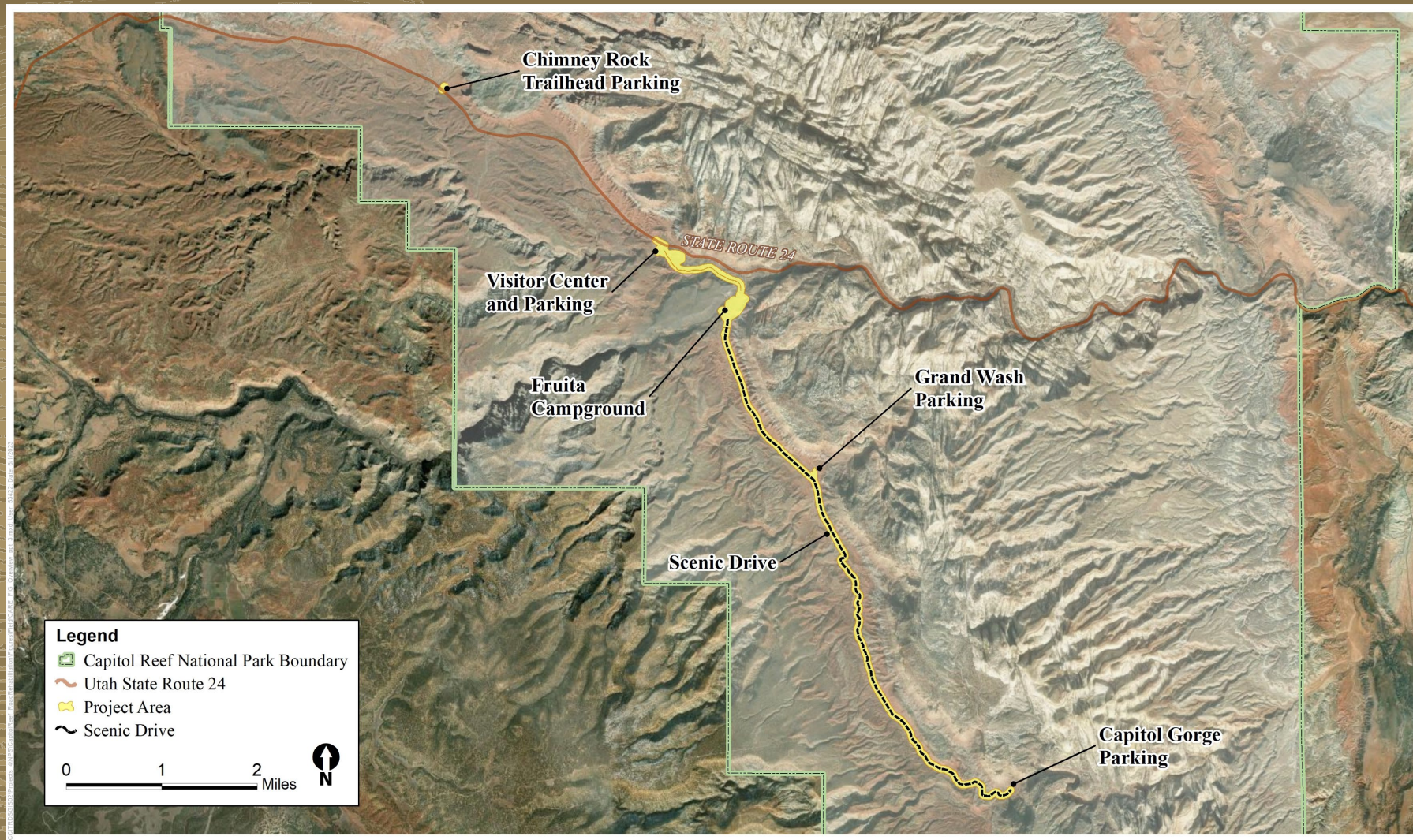
# Project Background



- Capitol Reef National Park has experienced increased visitor use.
- Roads and parking are due for maintenance and repair.
- Repairs and improvements to infrastructure are proposed to improve safety and access in the park.
- Work is planned and implemented in partnership with Federal Highway Administration.



# Project Background





## Project Purpose

- Repair Scenic Drive pavement where it is damaged.
- Improve safety on Scenic Drive – widening parts of Scenic Drive, especially at tight curve areas.
- Expand parking capacity, delineate parking spots, and provide safe parking places.
- Improve drainage with minor ditching, riprap, and two new culverts.
- Improve accessibility at parking areas.



Overcrowding at Visitor Center parking lot



# Project Need



Overcrowding at Visitor Center



Road damage on Scenic Drive

EXPERIENCE YOUR AMERICA



## Proposed Action

- Rehabilitate and expand Chimney Rock Trailhead and Visitor Center Parking.
- Repair and rehabilitate Scenic Drive.
- Construct parking area at Grand Wash and expand parking area at top of Capitol Gorge.
- Repave various roads in the developed area.
- Upgrade and extend buried telecommunication lines in Fruita



Chimney Rock



# Potential Closures

- Scenic Drive from Fee Station to Capitol Gorge 6 months (April – October 2024).
- Chimney Rock Trailhead parking – 3 months.
- Visitor Center Parking partial closure – 3 months.
- Temporary short-term closures for paving in Fruita developed area.



Scenic Drive



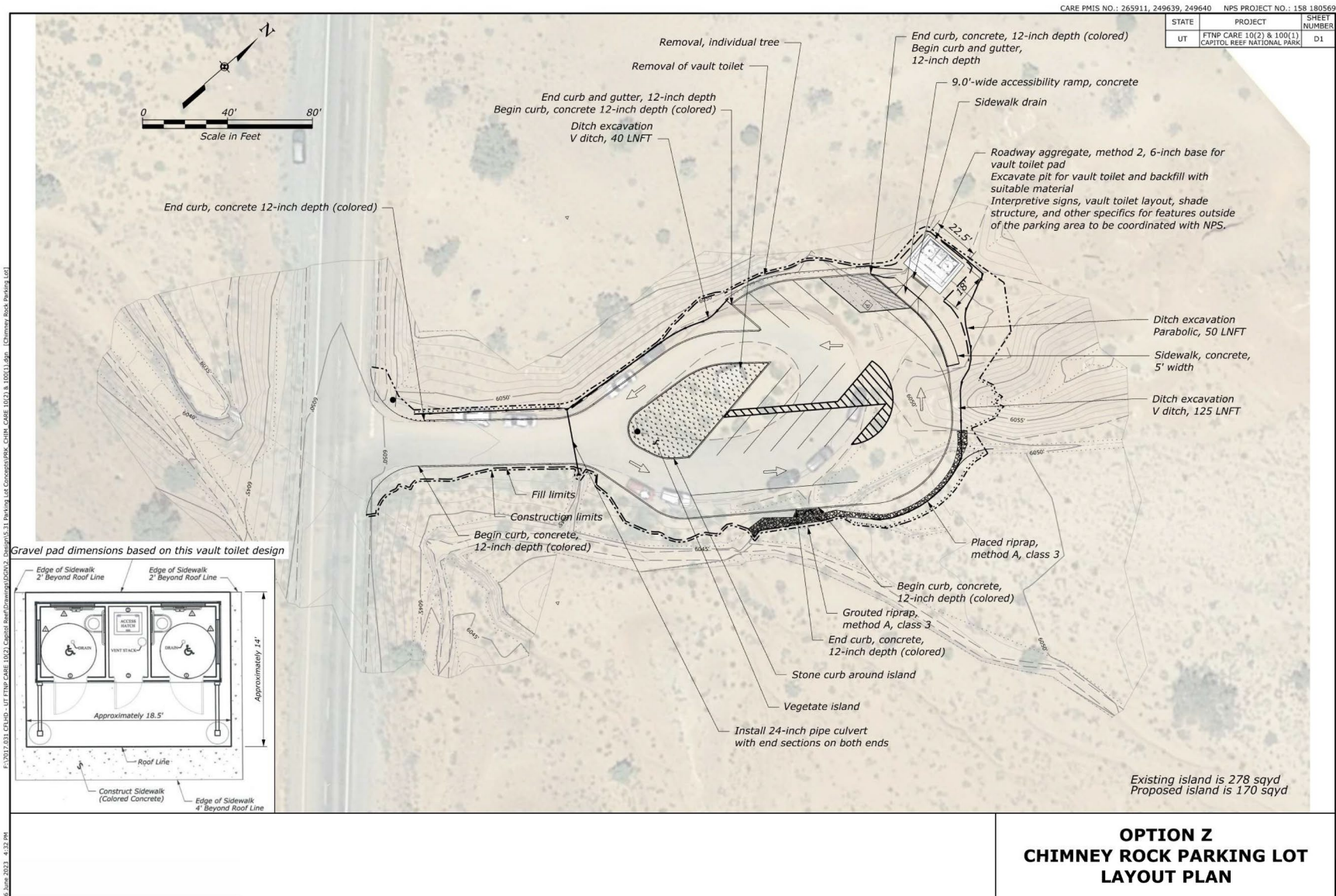
# Parking Lot Design – Chimney Rock Trailhead

- Parking lot would be expanded to the north and east.
- Parking spots would be delineated, including spaces for oversized vehicles.
- Vault toilet would be moved.
- Accessibility would be improved.



Overview of parking issues at Chimney Rock, Source: Google Earth 2023







# Parking Lot Design – Chimney Rock Trailhead



Area of Potential Expansion

Proposed area of expansion to the north.



Estimated Portion of Vegetated Island to Be Removed

Proposed redesign of vegetated island



# Parking Lot Design – Visitor Center

Visitor Center Parking Lot would be expanded to the south and east to accommodate increased visitation.



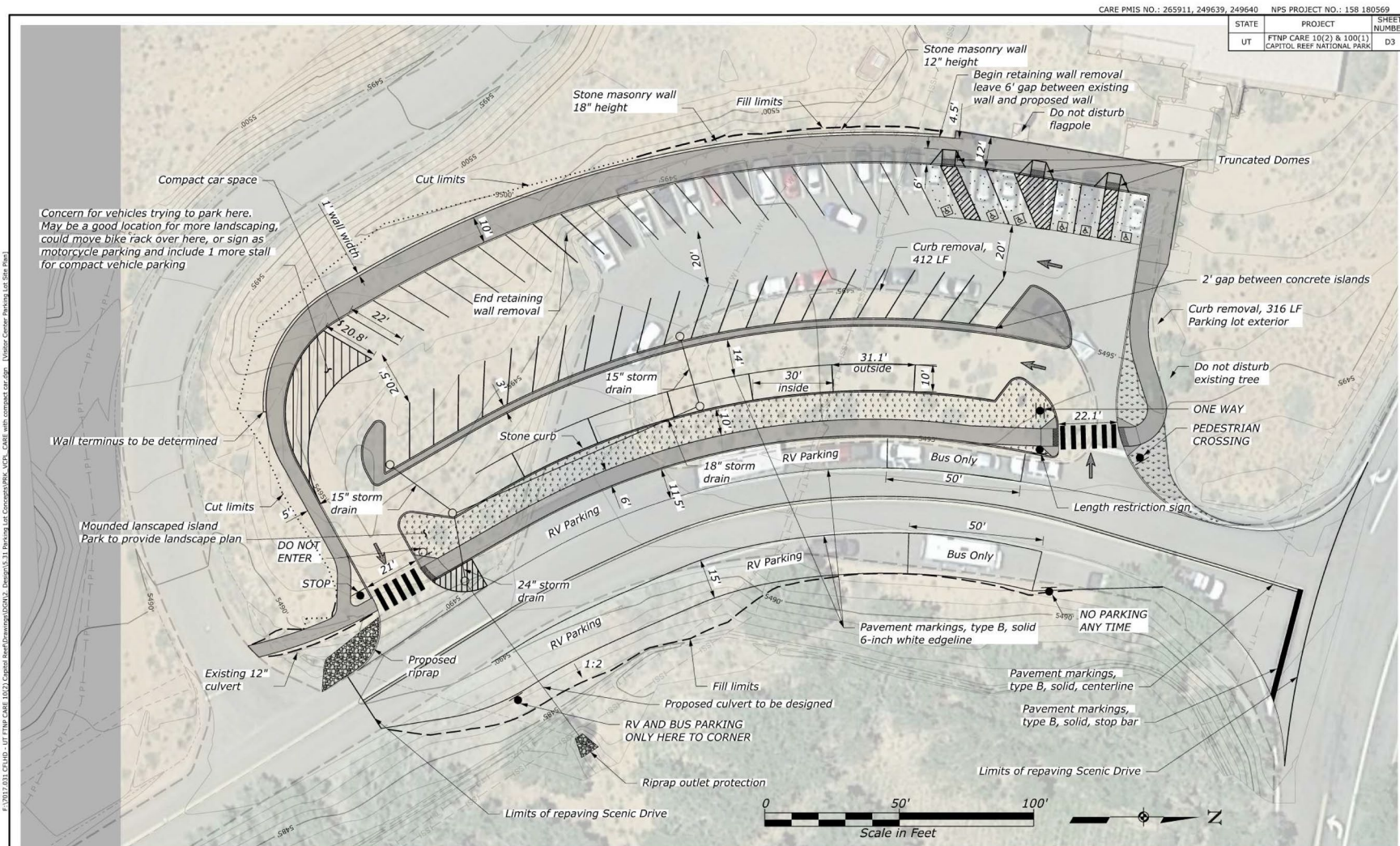
RVs parked near Visitor Center



Visitor Center aerial view, facing south

EXPERIENCE YOUR AMERICA







# Parking Lot Design – Grand Wash

NPS may construct a new gravel parking lot on the east side of the road into Grand Wash for use when Grand Wash is closed. Additional paved parking may be constructed along Scenic Drive.



Map of proposed parking locations.



View of Grand Wash



# Parking Lot Design – Grand Wash



Proposed parking area to east



Proposed parking area, viewing from Scenic Drive



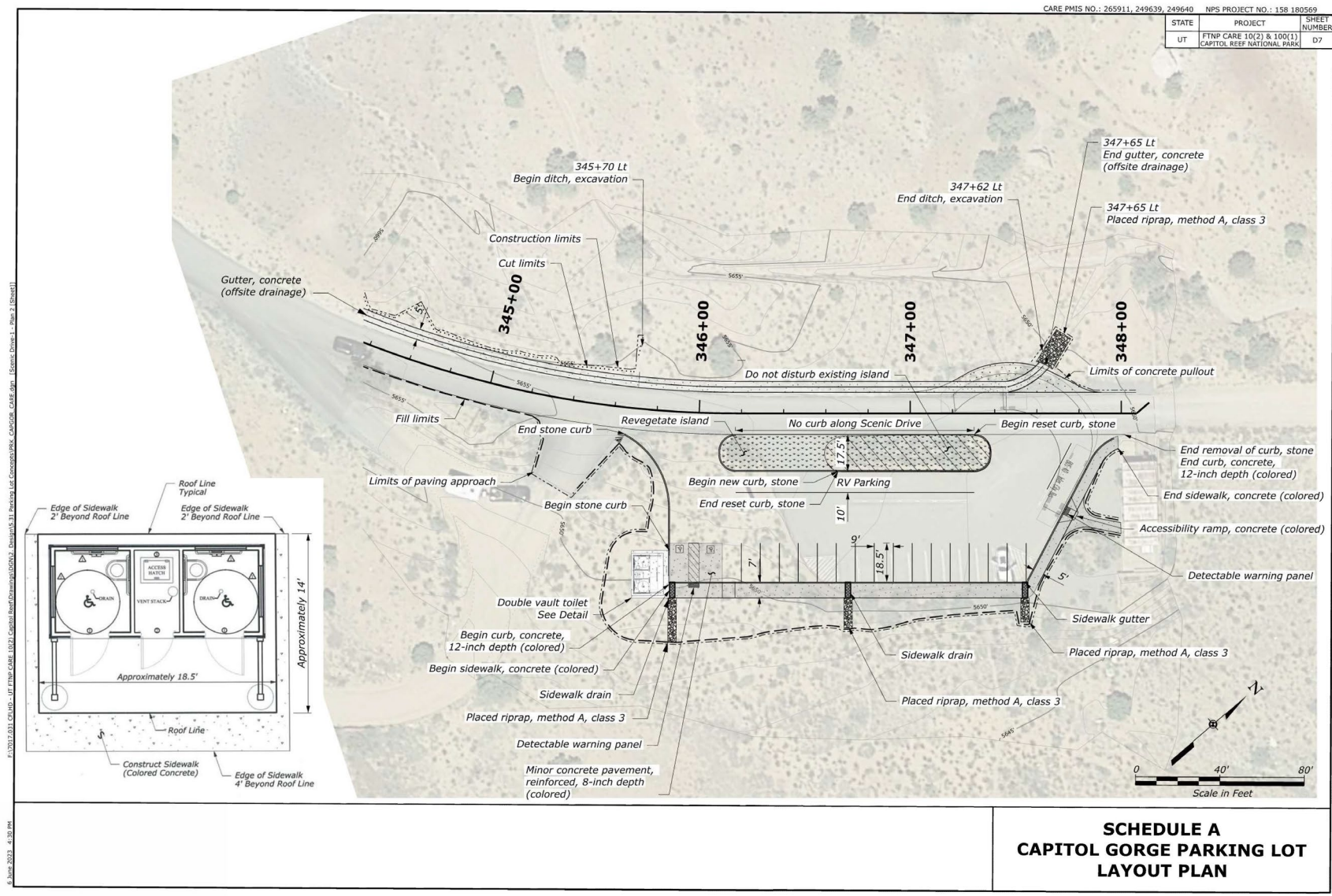
# Parking Lot Design – Capitol Gorge

- Design would address increased visitation and informal parking in adjacent areas.
- Parking would be expanded to the southwest.
- Drainage would be improved.
- Existing vault toilet would be moved.



View of Capitol Gorge from Scenic Drive. Source: Google Earth 2023







# Parking Lot Design – Capitol Gorge



Proposed expanded parking area



Proposed location of concrete gutter to improve drainage



# Road Repair and Rehabilitation – Scenic Drive

- Scenic Drive would be widened in parts to improve safety.
- Culverts and low-water crossings would be cleaned and repaired.
- The road surface would be repaved from SR 24 to Capitol Gorge.
- Concrete-lined ditches, riprap, and two culverts would be installed to improve drainage and prevent and repair flood damage.
- Curbs would be installed.



Example of proposed repair and maintenance on Scenic Drive



# Road Repair and Rehabilitation – Scenic Drive

Drainage repairs on Scenic Drive would involve improving and repairing existing low-water crossings and inflow and outflow areas of culverts, including additional ditching.



Existing low-water crossing in need of repair



View of erosion along edges of crossing and weir



# Environmental Compliance/Studies

- The National Environmental Policy Act (NEPA) requires the NPS to identify the impacts of any project to the surrounding environment and communities.
- The NEPA compliance for this project is expected to be a categorical exclusion.
- The NPS conducted investigations for cultural resources, including an archeological field survey and cultural landscape inventory, and consultation with tribes.
- Natural resources investigations included paleontology, wetland and waters, botany, and wildlife surveys.



Grand Wash west entrance



# Cultural Resources

- Cultural resources investigations revealed no archeological resources would be adversely affected by the project.
- Changes to parking areas would have adverse effects to the Capitol Reef Mission 66 Historic District – Chimney Rock, Visitor Center, and Capitol Gorge.
- The Scenic Drive Cultural Landscape would also be adversely affected.
- NPS has composed a draft memorandum of agreement to resolve adverse effects to the district.



Crews at Chimney Rock parking area



# Natural Resources

- Anticipated impacts to wetlands are an excepted action under 0.1 acre, and under the NPS threshold for preparation of a Wetland Statement of Findings.
- Rehabilitation and Repair of Park facilities are considered excepted actions under NPS Wetlands Procedural Manual #77-1.
- No fossil localities of scientific value were found in the project areas.



Sulphur Creek



# How to Get Involved



Chimney Rock area

- Visit the project website
- Review project materials
- Provide comments by July 6, 2023

<https://go.nps.gov/publicinvolvement>



# How to Comment

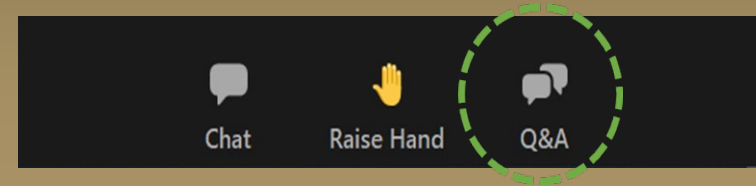
<https://parkplanning.nps.gov/CARE265911>

- Types of comments
  - Share your concerns
  - Identify resources that would be affected
  - Suggest impacts that should be addressed
- Comment Online at the NPS Planning, Environment & Public Comment (PEPC) website:  
<https://parkplanning.nps.gov/CARE265911>
- Or mail comments to:
  - Superintendent
  - Attn: Rehabilitate Scenic Drive and Multiple Parking Lots
  - HC70 Box 15
  - Torrey, Utah 84775



# Questions and Answer Session

- If you would like to ask a clarifying question, please type it into the Q&A box located at the bottom of the Zoom screen.
- If you are unable to use the Q&A box, please use the raise hand button, located at the bottom of your Zoom screen or press \*9 on your phone to raise your hand. The meeting host will unmute you so you can ask your question.
- Please note, while the Q&A discussion will be captured by the project team, questions are not considered formal comment.







**Thank for you participating.  
This meeting is adjourned.**

EXPERIENCE YOUR AMERICA