

# **Pu‘uhonua o Hōnaunau National Historical Park**

## **Remove and Replace Park Maintenance Facilities**



## **Environmental Assessment Public Meeting**

**Call in Number for Audio: 202 640 1187,  
300142004#**

**Teams Meeting ID: 218 612 600 842**

**Teams Passcode: 3S6YQr**

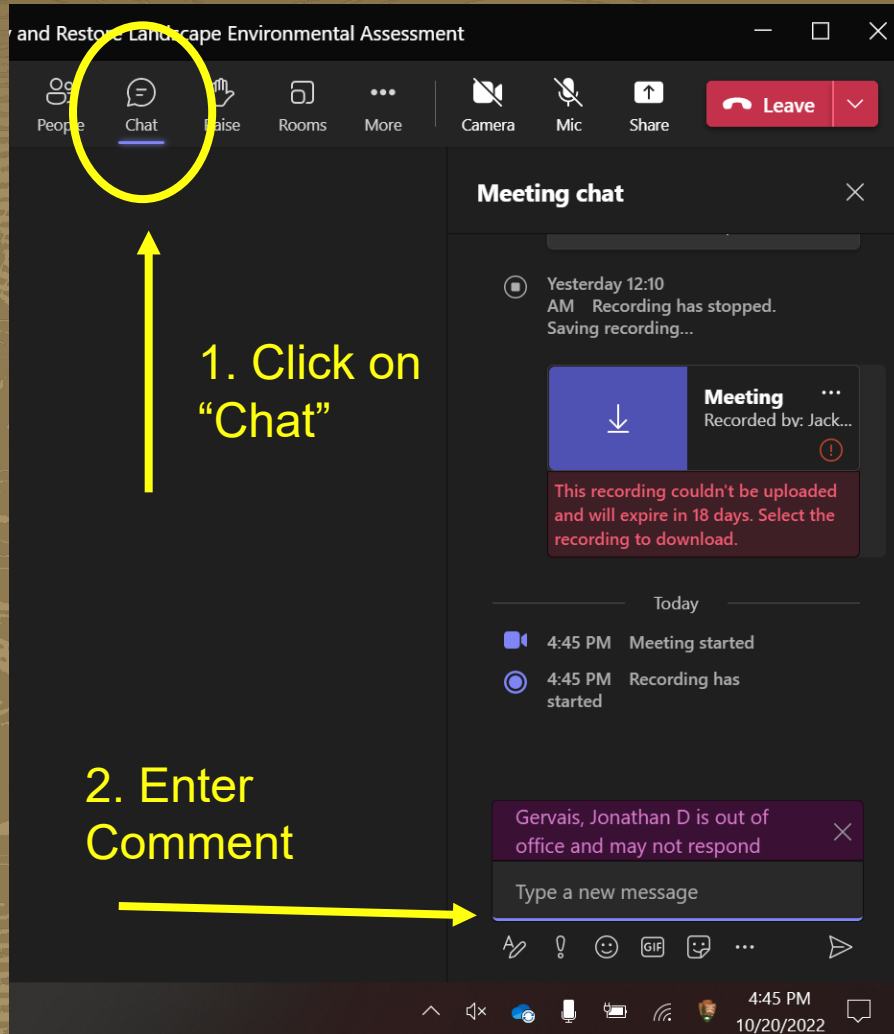
**June 21, 2023**

# WELCOME / INTRODUCTION



*Pu'uhonua o Hōnaunau National Historical Park*

# MEETING GUIDELINES



- Q&A will follow the presentation.
- Please enter your questions into the chat.
- Participants will be muted during the presentation.
- Additional comments and questions may be submitted through the Planning, Environment & Public Comment (PEPC) website:  
<https://parkplanning.nps.gov/puhorelocmaint>



# MEETING PURPOSE



*Existing Facilities*

- Share the purpose and need for taking action.
- Share alternatives and environmental compliance requirements.
- Provide an update on the project and changes since our last public meeting.
- Share the results of the completed Environmental Assessment (EA) under the National Environmental Policy Act (NEPA).
- Share instructions on how to comment on the EA.
- Opportunity for the public to ask questions and provide feedback.



# AGENDA

1. National Environmental Policy Act (NEPA) and National Historic Preservation Act (NHPA) processes
2. Project Background
3. Purpose and Need
4. Project Goals and Park Priorities
5. Proposed Action and Alternative Sites
6. Environmental Impacts
7. Project Schedule / Next Steps
8. How to Submit Comments
9. Question and Answer Session

# NATIONAL ENVIRONMENTAL POLICY ACT

- The National Environmental Policy Act (NEPA) of 1969 is a national policy for **protecting the environment**.
- NEPA requires federal agencies to:
  - Analyze the environmental impacts of federal actions.
  - Engage the public in the decision-making process.
- Goal is to ensure informed decision-making.
- NPS has prepared a NEPA Environmental Assessment (EA) to evaluate the project's impacts.

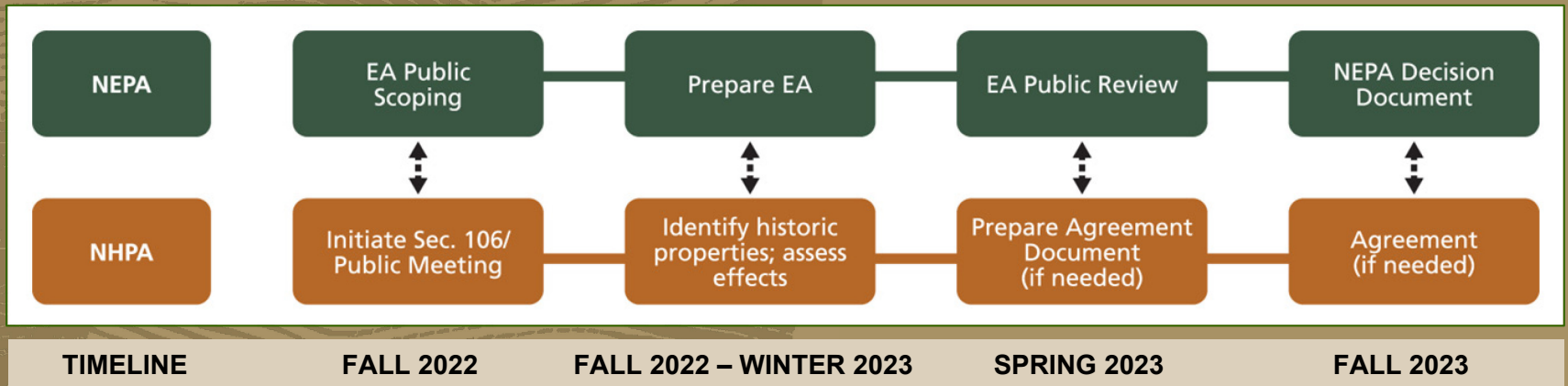
# NATIONAL HISTORIC PRESERVATION ACT

- Section 106 of the National Historic Preservation Act (NHPA) of 1966 established a process to **protect cultural resources**.
- Requires federal agencies to:
  - Consider and determine the direct and indirect effects of a proposed undertaking on historic properties.
  - Consult with State Historic Preservation Officers (SHPOs), Native Hawaiian Organizations, and other consulting parties.
  - Avoid, resolve, or mitigate adverse effects to historic properties.
- Goal is to **minimize potential harm and damage to historic properties**.

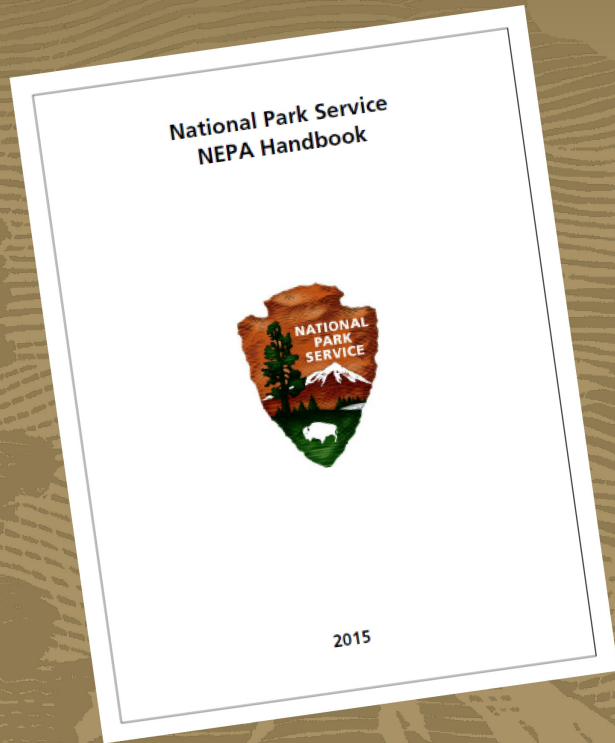


# SCHEDULE

**WE ARE HERE**



# EA PUBLIC COMMENT PERIOD



- Public comment period is part of the Environmental Assessment process which allows the public to provide comments, feedback, and concerns
- Public comments will be accepted **6/13/23 - 7/13/23**
- We welcome and encourage all public comments



# EXISTING FACILITIES



*Pu'uhonua o Hōnaunau National Historical Park*



# EXISTING MAINTENANCE FACILITIES

The seven existing buildings were constructed as temporary structures over 50 years ago to house resource management and maintenance staff and equipment.





# EXISTING MAINTENANCE FACILITIES

Located in an area with known archeological and cultural resources and are a visual intrusion on the landscape



*Historic Photo (c. 1963)*



*Existing Facilities (2021)*

# EXISTING MAINTENANCE FACILITIES

Coastal location is subject to inundation from waves



*High Surf Event, 2008*



# EXISTING MAINTENANCE FACILITIES

Outdated facilities



*Steps to buildings and break area*

# PURPOSE AND NEED FOR PROJECT

## Purpose

- Provide safe, modern, functional facilities for Park maintenance and resource management operations in a suitable location.
- Reduce impacts to resources and improve the Park experience by removing “temporary” buildings from the cultural landscape.
- Reduce the risks of coastal hazards and sea level rise by relocating away from the coast.

## Need

- Without the project, Park maintenance and resource management staff would continue operating in substandard facilities subjected to coastal hazards. The facilities would continue to adversely affect the cultural landscape and park administration.



*Pā Pu'uhonua (The Great Wall)*



# PROJECT GOALS & PRIORITIES

- Align with previous Park planning efforts.
- Minimize impact of Park operations on community and visitors.
- Utilize existing infrastructure and utilities to the extent possible.
- Serve operational needs of maintenance and resource management.



*Existing Buildings*



# PROJECT PROGRESS: 2021-2023

- Stakeholder and public engagement (public meetings on July 14 & 21, 2021 and November 9 & 10, 2022).
- Conducted resource and topographic surveys.
- Assessed utility needs.
- Identified and prioritized criteria for evaluating alternatives.
- Evaluated potential siting and design alternatives.
- Identified preferred alternative and prepared schematic designs.
- Prepared Environmental Assessment to analyze impacts under alternatives.



*Existing Buildings*

# ALTERNATIVES EVALUATION

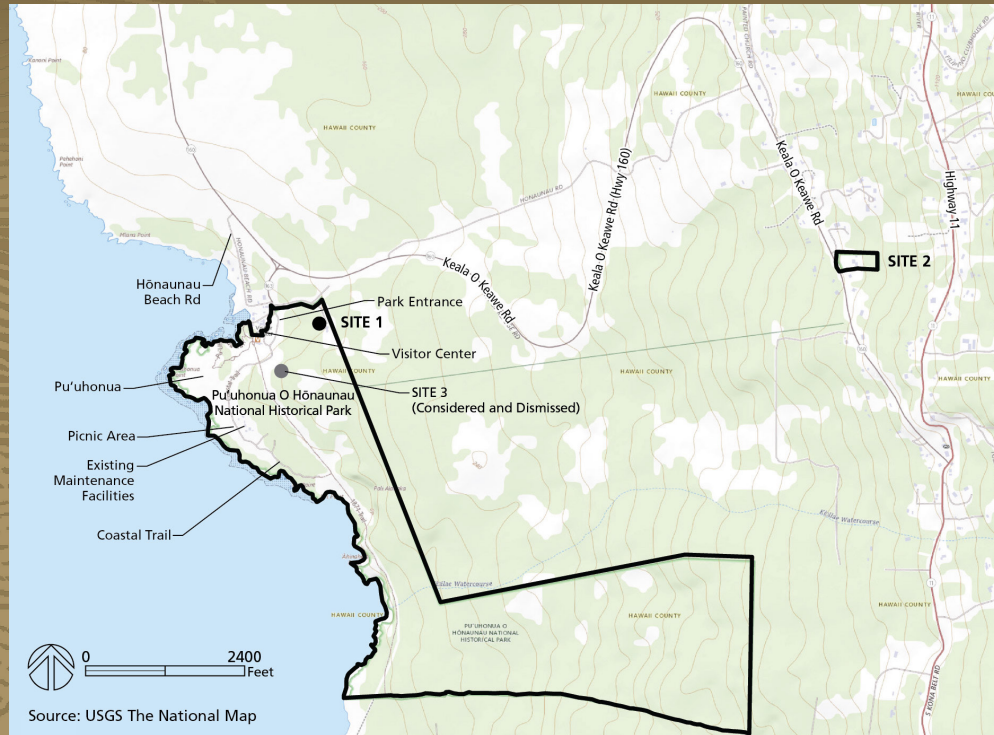
During the pre-design phase of the project, a range of alternatives, including multiple construction sites and new facility configurations, were evaluated. Since the previous scoping period, location and design alternatives have been refined.

Two action alternatives and one no action alternative were carried forward for analysis in the EA:

- Alternative A – Makai (Preferred), which is located at Site 1
- Alternative B – Mauka, which is located at Site 2
- Alternative C – No Action

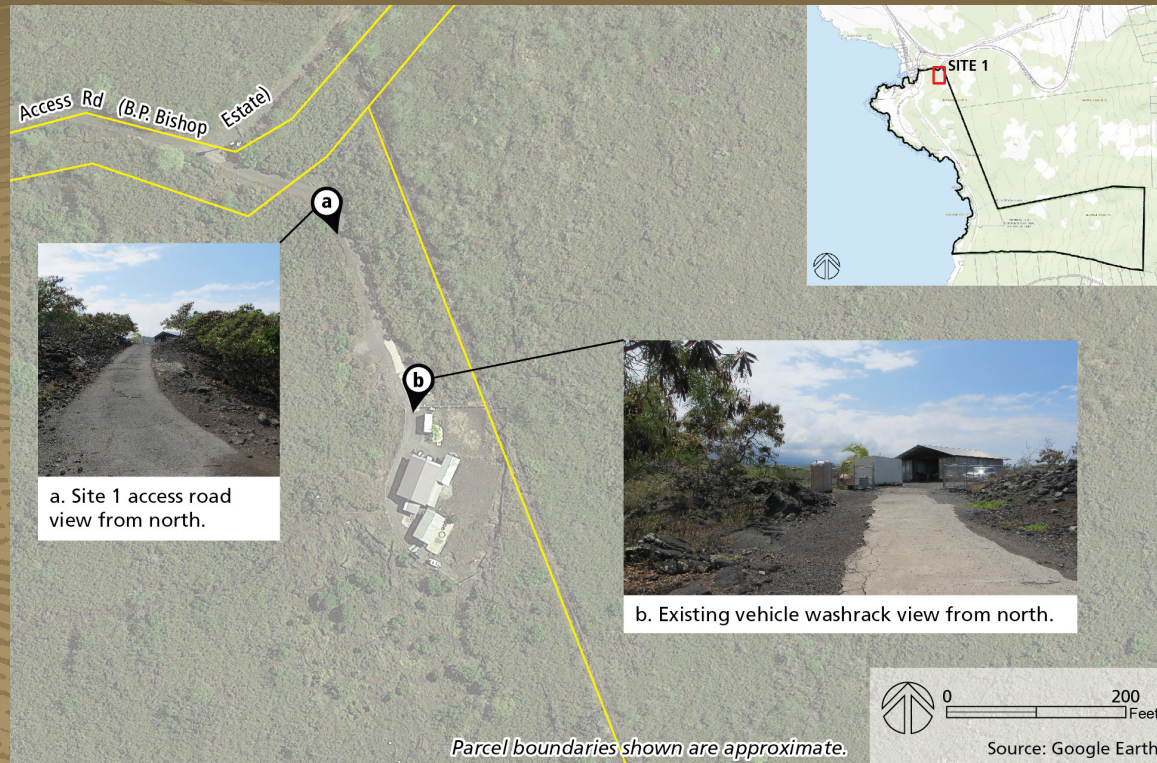


# ALTERNATIVES EVALUATION



- Sites 1 and 2 are analyzed in the Environmental Assessment.
- Site 3 was previously one of the locations considered for construction of new facilities. In response to comments from the public and analysis of environmental impacts, Site 3 was removed from consideration and further analysis.

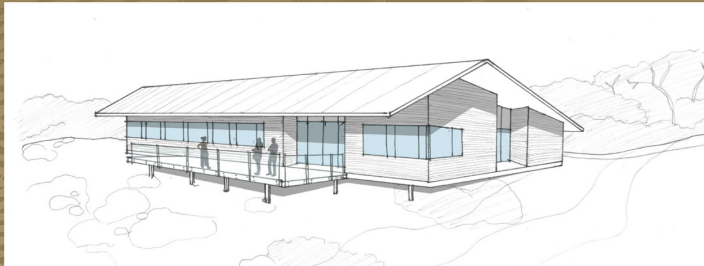
# ALTERNATIVE A – Makai (Preferred)



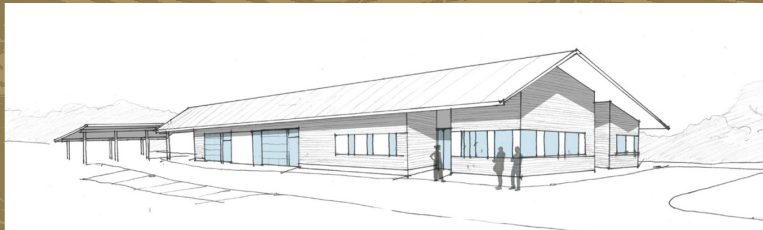
- Located at Site 1
- Within the main Park boundary in an existing maintenance/storage area not typically utilized by the public.
- Maintains physical security presence (Park assets & fleet are located onsite).
- Maintenance & operations staff avoid increased travel on public roads.
- Requires use of an access road on privately-owned land.



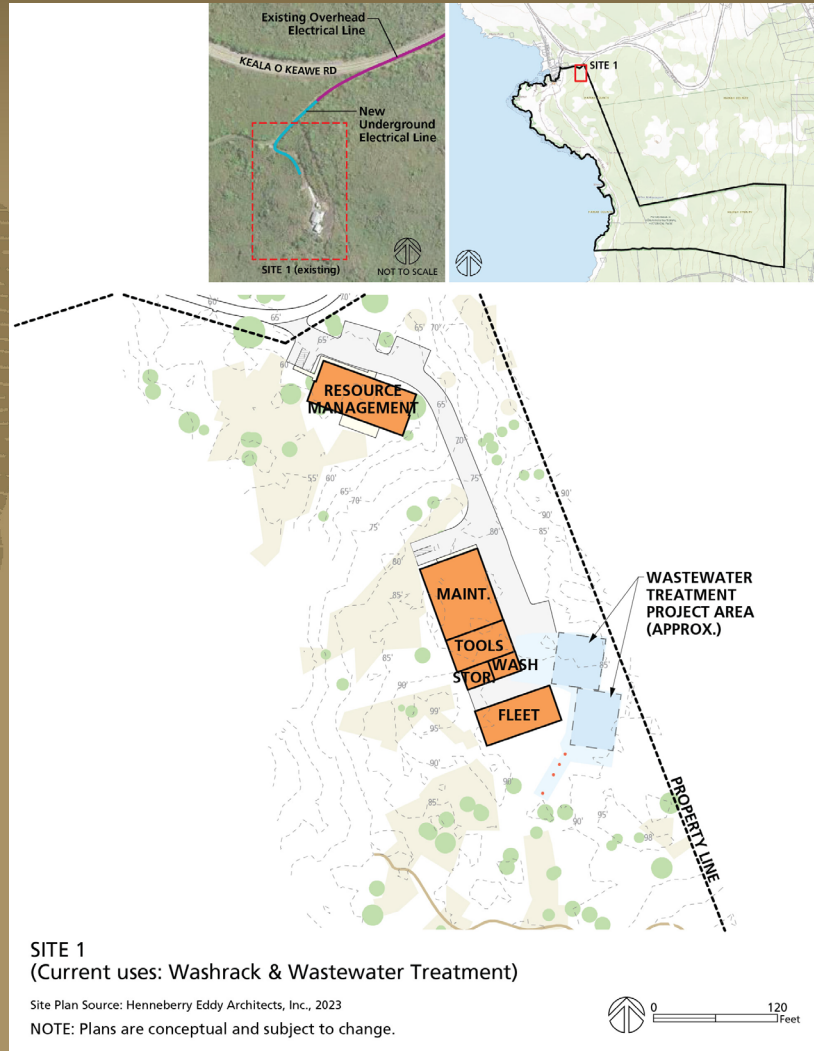
# ALTERNATIVE A – Makai (Preferred)



**Resource Management Building**



**Maintenance & Fleet Building**



SITE 1  
(Current uses: Washrack & Wastewater Treatment)

Site Plan Source: Henneberry Eddy Architects, Inc., 2023

NOTE: Plans are conceptual and subject to change.



**SITE 1**

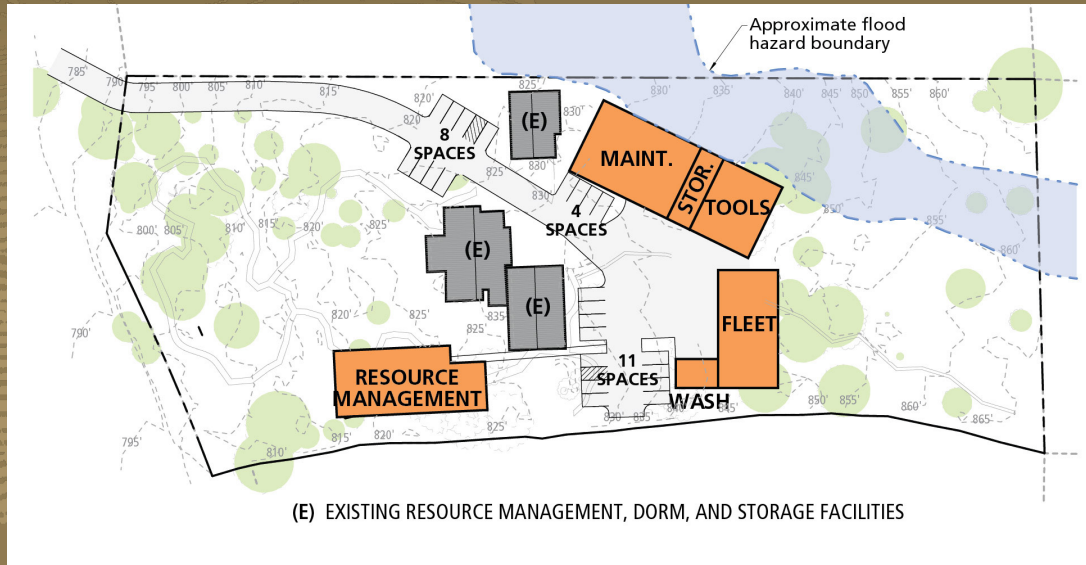
# ALTERNATIVE B – Mauka



- Located at Site 2
- NPS-owned, partially developed parcel outside main Park boundary.
- Approx. 3 miles east of Park entrance, with existing infrastructure.



# ALTERNATIVE B – Mauka



Site 2



Resource Management Building

# AFFECTED ENVIRONMENT

The Environmental Assessment provides a detailed analysis on the following issues:

- Biological species of special concern and their habitat
- Archeological resources
- Cultural landscapes
- Native Hawaiian concerns
- Transportation facilities impacts



# BIOLOGICAL SPECIES

- Biological species of special concern or their habitat include threatened/endangered species, migratory birds, and potential presence of subsurface lava tubes.
- Alternative A – Makai
  - No direct impacts on biological species.
  - Potential indirect adverse impacts on protected or indigenous bird species due to construction noise and activity.
  - Unlikely to adversely affect protected species in the operational period.
- Alternative B – Mauka
  - Direct and indirect adverse impacts on protected plant species at the site. Mitigation measures would be identified.

# ARCHEOLOGICAL RESOURCES

## ■ Alternative A – Makai

- Takes advantage of previously disturbed and developed areas.
- Adverse impacts to all known archeological resources would be effectively avoided through implementation of mitigation measures, which includes avoiding surface disturbance within 15 feet of all identified resources.
- Construction may result in minor adverse impacts to archeological resources if there is an inadvertent discovery during construction. Monitoring and discovery plans would be completed prior to ground disturbance to guide the response in case of discovery.

## ■ Alternative B – Mauka

- No identified archeological features.
- Construction may result in minor adverse impacts to archeological resources if there is an inadvertent discovery during construction.



# CULTURAL LANDSCAPES

## ■ Alternative A – Makai

- Within the Hōnaunau Historic District and within the viewshed of a National Register-eligible Mission 66 cultural landscape.
- Views of the new facility would be largely screened by vegetation and topography, but there could be minor adverse impacts to the cultural landscape.

## ■ Alternative B – Mauka

- No impact to the cultural landscape because it contains no archeological resources, is not in an historic district, and is not visible from a designated cultural landscape.
- Removal of the existing maintenance facility, under either alternative, would beneficially impact the cultural landscape.

# NATIVE HAWAIIAN CONCERNS

- It is the Park's duty to protect land, water and biocultural relationships and to manage access to the landscape for cultural practices by groups of people with traditional associations to park lands or resources.
- Alternative A – Makai
  - In close proximity to cultural resources.
  - Construction noise could have impacts to cultural practices, but these would be temporary.
- Alternative B – Mauka
  - Decrease staff time in the main Park area.
  - The site would not be available for potential future uses.
- Removal of the existing maintenance facility, under either alternative, is a beneficial impact.



# TRANSPORTATION FACILITIES

- Keala o Keawe Road (Highway 160) provides access to the Park, with visitor traffic volumes concentrated between 11:00 AM and 3:00 PM and on weekends.
- Alternative A – Makai
  - Temporary, minor impacts during the construction period on public roadways and the Park entrance.
  - No increases to vehicle traffic on Keala o Keawe Road.
- Alternative B – Mauka
  - Temporary, minor impacts during construction period on public roadways.
  - Increase in vehicle trips on public roadways between Site 2 and the Park entrance.

# PREFERRED ALTERNATIVE



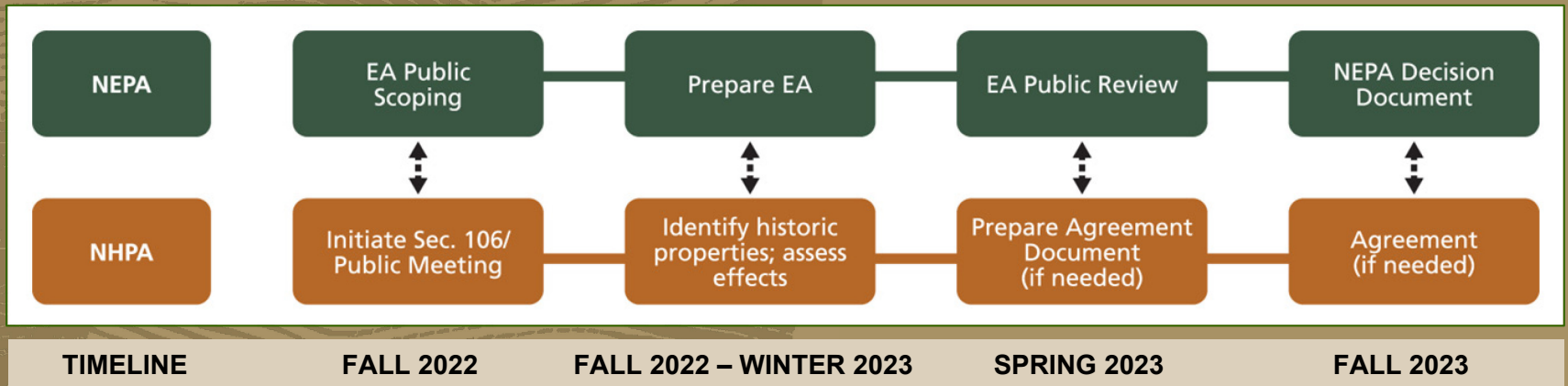
Based on the public input received during the scoping period and the findings in the Environmental Assessment, we have selected Alternative A – Makai as the preferred option.

We welcome and encourage your comments and feedback on the project and preferred alternative.



# SCHEDULE

**WE ARE HERE**



# HOW TO COMMENT

- Comments must be submitted online or postmarked by **July 13, 2023** to receive consideration.
- Submit Online Comments to:  
<https://parkplanning.nps.gov/puhorelocmaint>
- Mail written comments to:  
Nancy Hendricks, Acting Superintendent  
Pu'uhonua o Hōnaunau NHP  
P.O. Box 129  
Honaunau, HI 96726

You can also scan here to provide written comments:



***Please note*** that your entire comment, including personal identifying information (PII) (e.g., address, phone number, e-mail), may be made publicly available at any time. You may ask us to withhold your PII from public disclosure, but we cannot guarantee that we will be able to do so.



# Questions?

## Q&A Guidelines

- Use the “raise hand” feature on MS Teams or enter questions in the chat for the moderator to read.
- Additional comments and questions may be submitted through the PEPC website:

<https://parkplanning.nps.gov/puhorelocmaint>

You can also scan here to provide written comments:



# Thank You

## **Park Contact:**

Nancy Hendricks, Acting Superintendent

Pu'uhonua o Hōnaunau NHP

P.O. Box 129

Honaunau, HI 96726

[nancy\\_hendricks@nps.gov](mailto:nancy_hendricks@nps.gov)

You can also scan here to provide written comments:

