

National Park Service Community Involvement Plan

**Big Spring and Upper Current Small-Arms Firing
Ranges**
Ozark National Scenic Riverways
Midwest Region
March 2023



Revision Log:

Revision #	Revision Date	Revision Description
0	January 19, 2022	Draft
1	March 20, 2023	Final



TABLE OF CONTENTS

1.0 Introduction.....	1
1.1 Purpose and Objectives of the CIP	1
1.2 Comprehensive Environmental Response, Compensation, and Liability Act (CERCLA)	3
1.3 Overview of the CIP	3
2.0 Project Background	5
2.1 Site Description and History	5
2.1.1 Upper Current SAFR	5
2.1.2 Big Spring SAFR	8
2.2 Previous Environmental Studies and Response Actions	8
2.3 Current and Future Site Activities	8
3.0 Community Background	10
3.1 Community Profile.....	10
3.1.1 Demographics	10
3.1.2 Indian Nations or Tribes	11
3.1.3 Elected Officials.....	11
3.1.4 Transportation	11
3.1.5 Land Use	11
3.1.6 Services	12
3.2 Community Involvement History	12
3.3 Community Concerns and Needs.....	13
4.0 Planned Community Involvement Activities.....	14
4.1 Communication Methods and Community Involvement Activities	14
4.2 Community Involvement Activity Schedule	18
4.2.1 Ongoing Activities	18
4.2.2 Timetable of Specific Activities	18
5.0 References	20

LIST OF FIGURES

Figure 1-1	Site Location Map
Figure 2-1	Upper Current SAFR Features Map
Figure 2-2	Big Spring SAFR Features Map

LIST OF APPENDICES

Appendix A	Glossary
Appendix B	Administrative Record File and Information Repository Details
Appendix C	Community Fact Sheets and Community Updates
Appendix D	Community Interview Questionnaire
Appendix E	Contact Information
Appendix F	Community Involvement Requirements



LIST OF ABBREVIATIONS AND ACRONYMS

amsl	above mean sea level
CERCLA	Comprehensive Environmental Response, Compensation, and Liability Act
CIP	Community Involvement Plan
DOI	Department of Interior
EDL	Environmental Disposal and Liability
EE/CA	Engineering Evaluation and Cost Analysis
EPA	U.S. Environmental Protection Agency
Ft	feet
MO	Missouri
NCP	National Oil and Hazardous Substances Pollution Contingency Plan
NPS	National Park Service
RA	Removal Action
SAFR	Small-Arms Firing Ranges
Terracon	Terracon Consultants, Inc.



1.0 INTRODUCTION

The National Park Service (NPS) is issuing this *Community Involvement Plan* (CIP) as a resource to enable meaningful community involvement throughout the evaluation, selection, and implementation of cleanup activities at the Big Spring and Upper Current Small-Arms Firing Ranges (SAFRs or Sites). The NPS is conducting these cleanup activities at the Sites pursuant to NPS authority under the *Comprehensive Environmental Response, Compensation, and Liability Act* (CERCLA), 42 U.S.C. §§ 9601, *et seq.* and its implementing regulations under the *National Oil and Hazardous Substances Pollution Contingency Plan* (NCP), 40 C.F.R. Part 300. NPS is committed to encouraging public participation and providing opportunities for communication between the NPS and the affected community, interested stakeholders, and community residents during the environmental investigation and cleanup activities at the Sites.

CERCLA-related terms are defined in Appendix A, Glossary.

1.1 Purpose and Objectives of the CIP

The CIP has been prepared in accordance with CERCLA and the NCP. The CIP serves as a guide for the NPS to engage and inform community members, environmental groups, government officials, the media, and other interested parties concerning cleanup activities at the Sites. The CIP is a “living” document and will be updated or revised, as appropriate, as circumstances warrant.

The CIP has two key objectives. The first is to provide for the dissemination of information to the public in a timely, accurate, meaningful, and understandable manner. The second objective is to provide opportunities – and ensure the community understands those opportunities – for active public participation, enabling interested persons to provide valuable comments that can be used by the NPS project team for planning and decision making.

The strategies to accomplish these objectives take into consideration the location of the Sites and surrounding community. The Sites are located in Ozark National Scenic Riverways, with the Upper Current SAFR located near Akers in Shannon County, Missouri (MO) and the Big Spring SAFR located near Van Buren in Carter County, MO.

The Upper Current SAFR is located approximately 0.7 miles east of the Current River in proximity to Welch Landing and 0.3 miles west of State Highway K. It is accessible via an unpaved access road running west off State Highway K at latitude 37.3984 North, -90.43326 East and in Township 31 North, Range 6 West, southwest quadrant of Section 11 at an elevation of approximately 1,120 (ft) above mean sea level (amsl). The Big Spring SAFR is located approximately 4 miles south of South Van Buren and 2 miles west of Long Bay Hollow portion of the Current River and 0.25 miles east of State Highway Z. It is accessible via an unpaved access road running west off State Highway Z at latitude 36.927011 North, -89.020216 East and in Township 26 North, Range 1 East, southwest quadrant of Section 8 at an elevation of approximately 500 ft amsl. Figure 1 shows the locations of the Upper Current and Big Spring Sites.

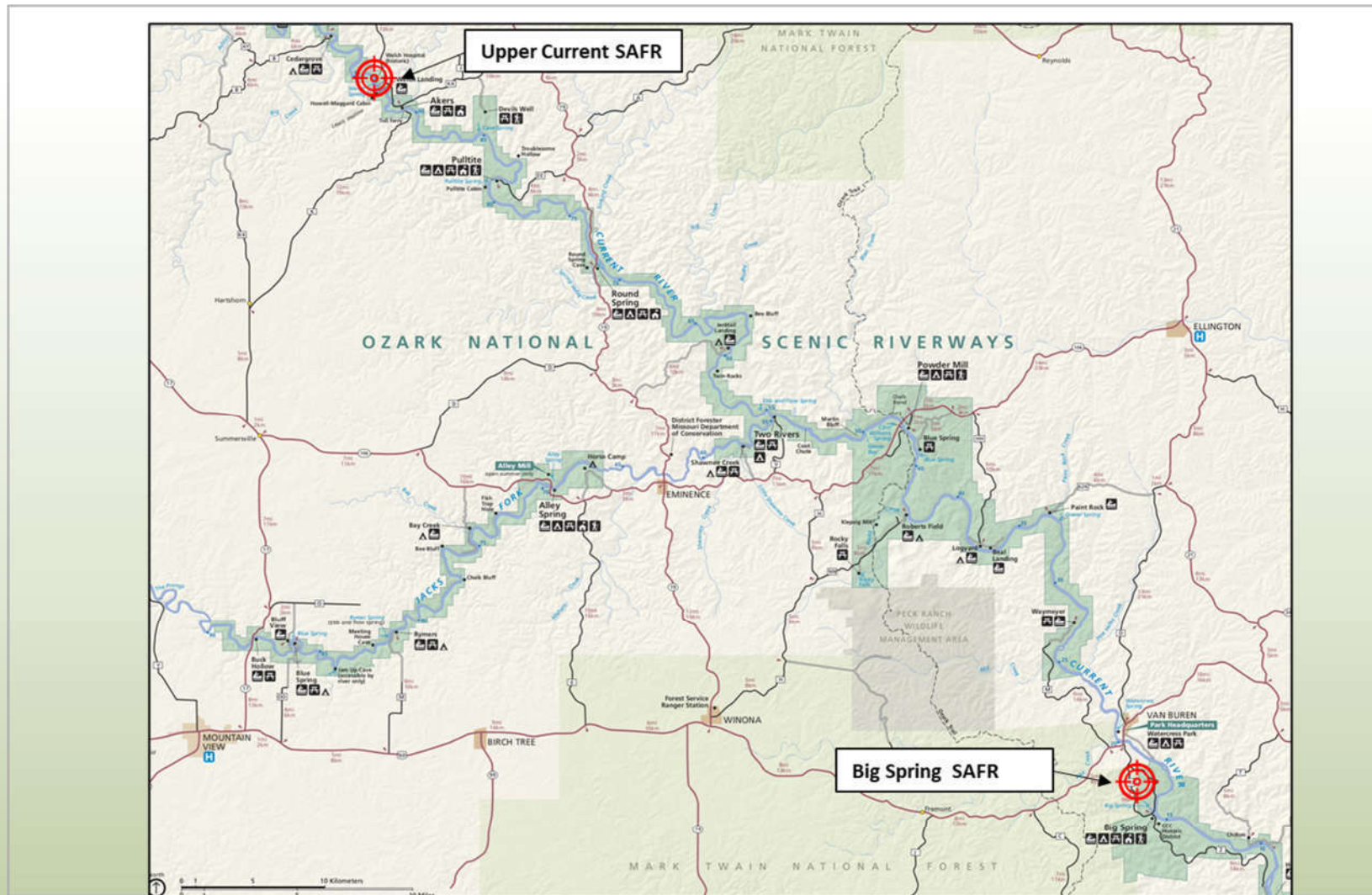


Figure 1 Ozark National Scenic Riverways Study Area
Upper Current and Big Spring SAFR





1.2 Comprehensive Environmental Response, Compensation, and Liability Act (CERCLA)

The NPS is investigating and cleaning up the Sites pursuant to CERCLA and the NCP. Congress enacted CERCLA, also known as Superfund, in 1980 to address releases and threatened releases of hazardous substances into the environment. CERCLA gives the President broad powers to respond to hazardous substance releases and threatened releases as the President deems necessary to protect the public health or welfare or the environment, including enforcement authority with respect to parties responsible for the releases. The President has delegated this authority to a number of federal departments and agencies, including the Department of the Interior. The Department of the Interior has further delegated CERCLA cleanup authority to NPS with respect to contamination released on property under NPS jurisdiction. The NPS, an agency within the Department of the Interior, is the CERCLA “lead agency” for the Sites.

To implement CERCLA, the U.S. Environmental Protection Agency (EPA) created the NCP, which is a set of regulations that detail how CERCLA cleanups are to be conducted, including requirements for community involvement activities. Different requirements apply to different types of response actions. The NPS has conducted an engineering evaluation and cost analysis (EE/CA) to develop and evaluate removal action alternatives and provide the basis for selecting a removal action that protects public health and welfare and the environment from threats associated with contaminants at the Sites.

As part of the removal action alternatives evaluation, NPS has conducted an EE/CA to fully characterize the nature and extent of site contamination, evaluate associated potential threats to public health or welfare or the environment, identify relevant cleanup requirements, develop a range of cleanup alternatives, and identify a recommended removal action alternative for the Sites. As the lead agency for the Sites, NPS must involve the community in this process in the manner detailed in the NCP. This CIP is part of that community involvement process.

1.3 Overview of the CIP

The CIP specifies the community involvement activities that the NPS expects to undertake as the evaluation of removal action alternatives is conducted, a removal action is selected, and the cleanup of the Sites proceeds. This CIP is organized as follows:

- Section 1.0: Introduction – A description of the purpose of the CIP.
- Section 2.0: Site Background – An overview of Site description and history, previous Site investigations, and current and future Site activities.
- Section 3.0: Community Background – A community profile, history of community involvement at the Site, and summary of community concerns and questions.
- Section 4.0: Community Involvement Activities – A description of planned methods and activities for communicating with the public concerning Site activities, and a general schedule of anticipated community involvement activities.



- Section 5.0: References – A list of references used in developing this CIP.

The appendices include a glossary (Appendix A), administrative record file and information repository details (Appendix B), community fact sheets and community updates (Appendix C), community interview questionnaire (Appendix D), contact information (Appendix E), and tables of minimum community involvement requirements (Appendix F).



2.0 PROJECT BACKGROUND

2.1 Site Description and History

The two Sites are located in the Ozark National Scenic Riverways and proposed wilderness area. The firing ranges are as follows:

- Upper Current Firing Range near Akers, Missouri; and
- Big Spring Firing Range near Big Spring, Missouri.

The firing ranges were used for pistol and rifle range practice and training. Ammunition used at the ranges consisted of .40 and .45 caliber, 9 mm pistol rounds, .223 caliber M-16 high-powered rifle rounds, and 12 gauge shot gun ammunition including one-ounce slugs and buckshot. The SAFRs locations are depicted in Figures 2-1 and 2-2.

Both the Upper Current and Big Spring SAFRS have been inactive since approximately 2013. The Upper Current SAFR dates back to the 1970s for exclusive NPS use. This SAFR was used for practice, training, and qualification. The Big Spring SAFR dates back to the 1950s as a public shooting range but was subjected to limited use. This SAFR became more active in the 1970s after NPS acquisition, and was used by multiple agencies for practice, training, and qualification.

Lead bullets and fragments were observed at the ranges during a September 2006 site visit. No known lead reclamation efforts have been conducted at the Sites. The NPS is in the process of completing an EE/CA for the two SAFRs.

2.1.1 Upper Current SAFR

The Upper Current SAFR included a firing line marked by wood posts, a target line marked by four plywood targets (approximately two feet wide by three feet tall) mounted on wooden posts approximately three feet off the ground. The Site is a rectangular shaped property that is approximately 70 feet by 250 feet. The former target stands were located in front of a manmade earthen berm approximately 7 feet high that acted as an impact zone. Use has been fairly limited (e.g., semiannual qualification by five NPS Rangers) and has not been used since approximately 2013, with the berm being fairly overgrown with saplings, plants, and grasses. The area surrounding the range is heavily wooded with some small hills. The Current River is located approximately 400 yards west of the firing range.



Figure 2-1 Upper Current SAFR Features Map
Current and Big Spring SAFR EE/CAs





Figure 2-2 Big Springs SAFR Features Map
Current and Big Spring SAFREE/CAs





2.1.2 Big Spring SAFR

The Big Spring SAFR dates back to the 1950s as a public shooting range but was subject to limited use. This SAFR became more active in the 1970s after NPS acquisition. This former range contained five lanes, a mowed grass area approximately 55 yds by 25 yds and is surrounded by timber. The former target stands were located in front of a natural hillside that acted as an impact zone. A barn (storage building) is located adjacent to the range floor. The barn is constructed of wood with a tin roof and is in structural disrepair. The barn appeared empty as observed in April 2021.

2.2 Previous Environmental Studies and Response Actions

The NPS conducted investigations at three SAFRs in Ozark National Scenic Riverways in 2006 which included the Upper Current SAFR and the Big Spring SAFR. The investigation culminated in the Site Assessment Report, SAFR, Ozark National Scenic Riverways, Southern Missouri produced by Terracon Consultants, Inc. (Terracon) of Omaha, Nebraska in 2006. Terracon's investigation at each SAFR consisted of an initial visual assessment to visually delineate the extent of bullet fragments, and to identify areas of high bullet density, followed by collection of discrete samples at high density lead soil areas which were analyzed at a fixed laboratory for lead concentrations in soil.

2.3 Current and Future Site Activities

The Sites were previously used as active firing ranges. Both of the Sites are currently closed to vehicle access with locked gates. The Upper Current Site locked gate is located at the Site turnoff at State Highway K within 0.3 miles of the Site. The Big Spring Site locked gate is located at the Site turnoff at State Highway Z within approximately 0.25 miles of the Site. Both gates include "keep out – no trespassing" signage.

Current Site activities are focused on selecting a removal action for the Sites that will protect public health and welfare and the environment from lead contamination resulting from past firing range activities. The NPS is providing information about the Sites and planned Site activities to stakeholders including regulatory agencies and interested members of the public through actions described in this CIP. The NPS is compiling administrative record which comprises all documents that NPS will consider or rely on in selecting a removal action. Finally, the NPS is soliciting public comments on a draft EE/CA Report prior to selecting a remedy for the Sites.

The EE/CA Report summarizes the results of previous Site investigation, which confirmed the presence of lead contamination in surface and shallow subsurface soil at the Sites. In addition, the draft EE/CA Report evaluates two removal action alternatives in terms of their effectiveness, implementability, and cost, and identifies a preferred alternative to present to the public for review and comment.

The NPS anticipates the draft EE/CA Report will be available for public review and comment in April of 2023. As provided by the NCP, a 30-day comment period will be provided



to the public and stakeholders. The NPS will carefully consider all comments received during this period in the decision-making process prior to selecting a removal action alternative that will be documented in the final EE/CA Report. The NPS anticipates the final EE/CA Report for the Sites will be issued in the Summer of 2023.

Once the final EE/CA Report is issued, the NPS will prepare and issue a CERCLA Action Memorandum. The Action Memorandum is the decision document by which NPS will select a removal action for the Sites and explains the rationale for the selected removal action. Following the selection of the removal action, the NPS will begin the process of designing and implementing the removal action.

The tentative project schedule is provided below:

Draft EE/CA Report	April 2023
Public Comment Period (30 days)	April-May 2023
Response to Public Comments	June-July 2023
Final EE/CA Report	July 2023
Action Memo	August-September 2023
Removal Action Design	To be determined
Removal Action	To be determined
Project Closeout	To be determined



3.0 COMMUNITY BACKGROUND

3.1 Community Profile

The community profile is intended to help the NPS and its contractors understand local issues and people, which is key to developing a communication strategy tailored to the needs and interests of the community near the Sites. The focus is on identifying communication opportunities and constraints. This includes identifying languages spoken and whether there is a need for translation; unique cultural patterns, customs, or values reflected in the use of the park; and attributes that might inform the selection of methods to facilitate community involvement in site cleanup, and those that could be important in the conduct of the removal action.

As is typical of many NPS sites, the SAFR sites are relatively remote and are not within or adjacent to a community of significant size. As indicated above, the two former SAFRs are restricted from public access, unlike most public areas of OZAR.

The demographics of various user groups (local residents, Park visitors, NPS personnel and contractors) are described below, along with information on government, transportation, land use, and local schools.

3.1.1 Demographics

3.1.1.1 Upper Current SAFR

Shannon County is in the southern portion of Missouri with a total area of 1,004 square miles. It is the second-largest county by area in Missouri, and as of the 2020 census, the population was 7,031 (Wikipedia, 2021c). Akers is an unincorporated community in northwestern Shannon County. It is located approximately one and a half miles southeast of the Upper Current SAFR and 18 miles northwest of Eminence in the Ozark National Scenic Riverways. Akers houses a campground and access to the Current River (Wikipedia, 2021d). As of the census of 2000, there were 3,319 households and 2,356 families residing in Shannon County, with a population density of 8 per square mile. The racial makeup of the county was 95.05% White, 0.17% African American, 1.83% Native American, 0.05% Asian, 0.02% Pacific Islander, 0.19% from other races, and 2.69% from two or more races (Wikipedia, 2021c).

3.1.1.2 Big Spring SAFR

Carter County is in the southern Courtois Hills region of the Ozark Plateau of Missouri, with an area of 509 square miles. In 2020, it had a population of 5,202. The largest city and county seat is Van Buren (Wikipedia, 2021a). Van Buren, located approximately five miles north of the Big Spring SAFR, had a population of 747 in 2020 (Wikipedia, 2021b). The Ozark National Scenic Riverways runs through the central portion of the county. As of the census of 2000, there were 2,378 households and 1,674 families residing in Carter County, with a population density of 12 people per square mile. The racial makeup was 96.6% White, 0.08% African American, 1.35% Native American, 0.10% Asian, 0.03% from other races, and 1.83% from two or more races (Wikipedia, 2021a).



3.1.1.3 Visitors

The Ozark National Scenic Riverways statistics for annual park recreational visits indicates over 1 million visitors per year since 1970 (<https://irma.nps.gov/STATS/>). From 2015 through 2020, the average number of recreational visitors was 1,247,943. Monthly public use in 2021 indicates 28,818 visits per month, all recreational in purpose. Recreational overnight stays total 260 per month, with 120 in NPS campgrounds, 58 in the backcountry, and 82 in miscellaneous NPS areas. 306 visits per month are day-only picnic use.

3.1.1.4 NPS Personnel and Contractors

The NPS is the primary employer in the Ozark National Scenic Riverways. The majority of the people who work in the Ozark National Scenic Riverways are reported to live in neighboring communities and rural areas.

3.1.2 Indian Nations or Tribes

There are no known Indian nations or tribes in the area surrounding the SAFRs.

3.1.3 Elected Officials

Missouri is represented in the U.S. Senate by Republicans Roy Blunt and Josh Hawley and in the United States House of Representatives (8th Congressional District) by Republican Jason Smith. Mike Parson is the Governor of Missouri. Both Shannon County and Carter County are represented by Republican Jason Bean (25th Senate District), while Shannon County is represented by Republican Ron Copeland (143rd House of Representatives District) and Carter County is represented by Republican Darrell Atchison (153rd House of Representatives District).

3.1.4 Transportation

The greater Big Spring SAFR area is served by US Route 60 running east-west approximately 5 miles north of the SAFR. From Van Buren, MO, the Site can be accessed by Missouri Route 103 and state highway Z. The greater Upper Current SAFR area is served by state highway 19 running north-south approximately 7 miles east of the SAFR. From Akers, MO, the Site can be accessed from state highway K. The nearest commercial airports to the Ozark National Scenic Riverways are in Saint Louis and Springfield, MO as well as Memphis, TN.

3.1.5 Land Use

Since the SAFRs have been discontinued, current Site activities are focused on the fostering the foundational purpose of the Ozark National Scenic Riverways. Ozark National Scenic Riverways was established by an Act of Congress in 1964 (Public Law 88-492) to conserve and interpret unique scenic and other natural values and objects of historic interest, including preservation of portions of the Current and Jacks Fork Rivers in the Ozark Highlands of southeastern Missouri, in Shannon, Carter, Dent, and Texas counties. Within its boundaries



are approximately 80,785 acres of river, forest, open field, and glade environments. Of that, 51,654 acres are federally owned, and 29,131 acres are in nonfederal ownership.

The Ozark National Scenic Riverways includes portions of the Current and Jacks Fork Rivers, providing 134 miles of clear, free-flowing, spring-fed waterways. Much of the area is underlain by dolomite that has given rise to numerous sinkholes, caves, and springs representative of classical karst topography. Up to 90% of the combined flow of the Current and Jacks Fork Rivers comes from springs, which account for their year-round, sustained flows. Big Spring, one of the largest springs in the United States, has an average flow of approximately 287 million gallons of water per day. The impressive hydrogeologic character of the National Riverways' karst landscape supports an amazing variety of natural features, including a spring system unparalleled in North America. The cave system is equally impressive with one of the highest densities of caves in any national park. The National Riverways lies within the Ozark Highlands, an important center of biodiversity in North America. The Ozark Highlands are home to a rich array of wildlife and plants, including endemic species that exist nowhere else in the world. The Current and Jacks Fork Rivers have been designated as Outstanding National Resource Waters in Missouri.

As indicated above, the Sites have not been used as active firing ranges since approximately 2013. Both of the Sites are currently closed to vehicle access with locked gates. There are no amenities on the Sites.

3.1.6 Services

The nearest hospital to the Upper Current SAFR is the Salem Memorial District Hospital in Salem, MO. General services (lodging, stores, post office, etc.) can be found within 15 to 20 miles in most directions from the SAFR. The Green Forest, Oak Hill, and Summersville school districts are the closest to the SAFR (approximately 14 miles to each). The nearest hospital to Big Spring SAFR is the Big Spring Medical Clinic in Van Buren, MO. Van Buren, approximately five miles from the SAFR is the closest city with general services (lodging, stores, post office, etc.). The Van Buren school district is the closest to the SAFR, with schools approximately 5.5 miles away.

3.2 Community Involvement History

The Sites had only limited investigation work in 2006 (Section 2.2) and most recently for the EE/CA in April 2021. Thus, no community involvement activities have been conducted to date. This CIP and its interviews represent the start of community outreach for the Sites.

The NPS will establish an information repository at the OZAR Headquarters in Van Buren, MO or other appropriate location. The information repository is a location open to members of the general public where they may review and make copies of documents (including the administrative record file) relevant to the Sites. The administrative record is a file that contains all information used by the lead agency to make its decision on the selection of a response action. For the convenience of the interested local community and the general public,



the repository is in a centrally-located NPS office. The administrative record file will be available for public review on the NPS website at a later time.

3.3 Community Concerns and Needs

Identifying community concerns and issues is a vital step in the CIP's development, and it is important that the public be asked for recommendations on how NPS can most effectively involve and communicate with the community. To identify community concerns and needs and to identify how and when citizens would like to be involved in the cleanup process, NPS may choose to conduct community interviews in the future with local officials, community residents, and various environmental and special interest groups who represent a range of opinions and backgrounds. A list of interview questions is provided in Appendix D, Community Interview Questionnaire.



4.0 PLANNED COMMUNITY INVOLVEMENT ACTIVITIES

As noted earlier, the key objectives of the community involvement program are to establish and encourage communication between NPS and the community and provide opportunities for the public to provide input throughout the course of CERCLA response activities at the Sites. The following methods and techniques may be used to promote public participation and establish steps to provide timely information to interested citizens, agency staff, government officials, the media, and the community at large. The first part of this section describes each community involvement activity and the second part provides a schedule for when those activities will occur.

Important: Upon request, NPS will endeavor to meet identified needs for translation, access to electronic communications, disability access, or other accommodations for people with special needs.

4.1 Communication Methods and Community Involvement Activities

- **Site Spokesperson**

Eric Daniels, Chief of Resource Management Ozark National Scenic Riverways, is the designated NPS spokesperson who will inform the community of actions taken, respond to inquiries, provide information concerning the Sites, and act as liaison between the NPS and community members, environmental groups, government officials, the media, and other interested parties. See Appendix E for contact information.

- **Administrative Record File and Information Repository**

The administrative record file is housed in both information repositories and contains the Sites environmental investigation and reports and other information that NPS considers or relies upon in the response action selection process. NPS will update the administrative record file at key points during the response action process, such as when important investigations and reports are completed. See Appendix B for administrative record file and information repository details.

- **Interested Parties Mailing List**

NPS maintains an interested-parties mailing list that includes federal, state, and local elected officials; local school district officials; selected agency staff; community groups; media contacts; and interested community members. NPS notifies the parties on the list whenever key documents are published or the status of the Sites change. In accordance with NPS's sustainability efforts, whenever possible mailings will be sent electronically by email, with hyperlinks to documents posted on the website. However, interested parties can request conventional mail delivery if access to electronic communication is not available. In such cases, the NPS will send a letter informing interested parties of the availability of documents at the information repositories.

Efforts are ongoing to expand the mailing list. Individuals can be added to the mailing list by contacting the Site spokesperson (See Appendix E for contact information). NPS also



offers sign-up opportunities at public meetings. The NPS updates the mailing list as appropriate to reflect changes in government representatives and other contacts. Note that contact information for private individuals on the list will be kept confidential to protect the personal information of those individuals.

- **Public Comment Periods**

While NPS accepts comments on ongoing response activities from the public at any time, at certain times a formal public comment period will be provided. A public comment period is a formal time period during which the NPS accepts comments from the public on specific proposed actions or decisions. Generally, public comment periods last for 30 days, although they may be longer. Upon timely request (preferably to the Site spokesperson and in writing) during any public comment period, the NPS will extend the public comment period by a minimum of 15 days. In addition, upon request, the NPS will meet identified needs for translation, access to electronic communications, or other accommodations for persons with special needs (See Public Notices, below).

The NPS will formally notify the community of public comment periods through several means:

- The NPS will publish notice of public comment periods in the Current Local (Van Buren, MO local newspaper).
- The NPS may also place notice of public comment periods on the Site website (<https://www.nps.gov/ozar/index.htm>).
- The NPS will notify individuals listed on the Interested Parties Mailing List.

The NPS anticipates the draft EE/CA report will be available to the community for public comment in on or about April 1, 2023 and will be available for at least 30 days.

Following the close of a formal public comment period, the NPS will prepare written responses to significant public comments *received during the public comment period* (called a “responsiveness summary”); the responsiveness summary will be added to the administrative record file.

- **Public Notices**

The NPS will issue public notices to inform the community and the general public of public events, publication of key documents, and major Site milestones.

Based on identified community preferences and the subject of the announcement, NPS will select from the following methods to distribute public notices about the Site:

- News release.
- The Current Local (Van Buren, MO) newspaper. To reach as many people as possible, the NPS publishes public notices in main sections of newspaper, not in legal notices sections.
- Site website.
- Notice sent to the Interested Parties Mailing List.
- Park postings as described in Park Visitor Communication.



- Social Media. Publish public notices on NPS OZAR webpage links to Facebook, Twitter, and Instagram as appropriate.

Following completion of the draft EE/CA report (anticipated on or about April 1, 2023), a public notice will be placed in the Current Local newspaper, Van Buren MO. The notice will provide a brief description of the draft EE/CA report; announce its availability for review; list dates of the 30-day public comment period; identify a contact person; list the locations where the document can be reviewed; and identify where written comments should be sent.

- **Newspaper Contacts/News Releases**

Notices will be made in the Current Local newspaper, Van Buren, MO. Generally, all media outlets regularly contacted by Ozark National Scenic Riverways staff will be included when news releases are issued. News releases may also be posted on the Ozark National Scenic Riverways web page. News releases will be issued at key milestones to ensure the distribution of accurate and timely information.

- **Community Organization Presentations**

If requested, the NPS will meet with interested community organizations or provide information for community organizations to include in their newsletters. Interested community organizations can discuss community organization presentations by calling or emailing the Sites spokesperson at the contact information provided in Appendix E, Contact Information. No presentations have been conducted to date.

- **Park Visitor Communication**

Based on discussions held during the community interviews, the NPS has determined that the most effective ways to provide Site information to Ozark National Scenic Riverways visitors will be to use the following methods:

- Posted notices located at the locked entrance gates to the two SAFRs.
- Brief article in the Current Local newspaper, Van Buren, MO.
- Ozark National Scenic Riverways website.
- Informed Ozark National Scenic Riverways staff (with sufficient information to address visitor questions).
- Community Updates.

Posted items will briefly explain the purpose of the project, what visitors may see or hear in the area, safety concerns, and sources for additional information. The NPS will also post the following information:

- The Sites website address (<https://www.nps.gov/ozar/index.htm>).
- Site spokesperson and contact information.
- Public notices.
- Notices of public meetings.
- Site access restrictions.



- **Community Updates**

Community Updates are brief documents to inform the community about the Sites and the environmental investigation and cleanup process. Community Updates present information about the Sites history; the nature and extent of the Sites contamination; public health and safety issues; investigation and/or cleanup plans, processes, and schedules; and local impacts during cleanup activities. Community Updates also provide contact information for public inquiries.

The NPS will prepare Community Updates at key milestones in the cleanup process using the format shown in Appendix C, Community Fact Sheets and Community Updates. No updates have been prepared to date. Per the NPS Best Management Practices for community involvement (NPS, 2014), it is anticipated that Community Updates will be issued as described in Table 2.

TABLE 2
ANTICIPATED MILESTONES REQUIRING A COMMUNITY UPDATE

When	Community Update Includes at a Minimum
At the time the draft EE/CA Report is made available for public review and comment	Findings and recommendations of draft EE/CA Report, Announcement of public comment period, Address/operating hours for information repository, Schedule of public meeting(s)
After removal action (RA) design and prior to start of the RA	Planned RA activities
During RA	Status of RA activities Relevant updates (e.g., spokesperson)
At completion of RA	Announcement of completion of RA Description of any future site response activities

Based on the demographics of the area, there does not appear to be a need for translation services and none of the interviewees indicated that they knew of a need for these services. However, the NPS shall make accommodations to provide translation services, should they be requested. Community Updates posted to the website will meet 508 requirements for access for the visually impaired. NPS will also work to provide other accommodations for people with special needs, upon request. No such accommodations are anticipated at this time based on the interviews. NPS will distribute Community Updates to the public using the following means:

- Posting Community Updates on the Sites website.



- Sending a notice to persons on the Interested Parties Mailing List with either a hyperlink to (for email notices) or a copy (for regular mail notices) of the Community Update.
 - Posting Community Updates at or near the Sites as described in the Park Visitor Communication section above.
 - Making Community Updates available at various Ozark National Scenic Riverways locations.
- **Site Website**
NPS may post general Site information as well as key cleanup and community involvement documents on the Ozark National Scenic Riverways website (<https://www.nps.gov/ozar/index.htm>).
 - **Contact Information**
NPS contact information will be included in Community Updates, public notices, news releases, and on the Sites website. Contact information for NPS representatives as well as for other key individuals is provided in Appendix E, Contact Information.
 - **Community Involvement Plan Revision**
To remain flexible and able to respond to the evolving needs of the community and the status of the cleanup of the Sites, the CIP will be reviewed and revised as needed, and posted on the website. As the response action progresses, NPS staff may identify and use additional means or activities to inform and engage the community.

4.2 Community Involvement Activity Schedule

The NPS selected the above methods and activities to engage and inform the community regarding the Sites and site activities. This section provides a schedule for when those activities will occur.

4.2.1 Ongoing Activities

Ongoing community involvement activities at the Sites may include responding to citizen inquiries and requests, maintaining the administrative record file and information repository, maintaining the Interested Parties Mailing List, maintaining park visitor communications, and maintaining the Sites website.

4.2.2 Timetable of Specific Activities

Specific community involvement activities by their milestone per NPS best management practices (NPS, 2014) are shown in Table 3.



TABLE 3
ANTICIPATED TIMETABLE FOR PLANNED CI ACTIVITIES

Milestone	Activity	Date
As soon as reasonably possible	Designate a Site Spokesperson	January 2022
	Compile list of interested parties	January 2022
By the time the Engineering Evaluation and Cost Analysis (EE/CA) Approval Memo is signed	Establish an information repository	February 2022
	Establish an administrative record (AR) file	February 2022
During drafting of the EE/CA Report	Conduct Community Interviews	March 2022
	Prepare and issue the formal Community Involvement Plan (CIP)	March 2022
When draft EE/CA Report is made available to the public	Update AR file up to and including the EE/CA Report and place a copy in the information repository	April 2023
	Upload electronic AR file to Park website	
	Publish notice of availability and description of EE/CA	
	Provide a public comment period of at least 30 days	April 2023
	As appropriate, hold public meeting	
After public comment period	Prepare a written response to significant comments	May-June 2023
When Action Memo is issued	Update the AR File to include the Action Memo	September 2023
	Review/revise the CIP as needed	
After completion of removal action (RA) design and before RA start	Issue a Community Update	To be determined
	Hold public meeting(s) on the removal action	
During the RA	Issue a Community Update	To be determined
At the completion of the RA	Issue a Community Update	To be determined



5.0 REFERENCES

NPS 2022. NPS Stats. National Park Service Visitor Use Statistics. [STATS – Welcome to Visitor Use Statistics \(nps.gov\)](#).

NPS 2022. Ozark National Scenic Riverways. <https://www.nps.gov/ozar/index.htm>.

NPS 2014. Community Involvement Requirements and Best Practices. 2014. <https://connect.doi.gov/nps/csportal>.

Terracon Consultants, Inc. 2006. Site Assessment Report, Small-Arms Firing Ranges, Ozark National Scenic Riverways, Southern Missouri. November 16, 2006.

United States Department of the Interior (USDOI). Environmental Compliance Memorandum No. ECM 14-2: *Central Hazardous Materials Fund (CHF) Comprehensive Environmental Response, Compensation, and Liability Act (CERCLA) Process for CHF Projects*. May 2014. Available at <http://www.doi.gov/pmb/oepc/upload/ECM-14-2-CERCLA-Process-for-CHF-Projects.pdf>.

United States Environmental Protection Agency (USEPA). *Superfund Community Involvement Handbook*. Apr. 2005. Available at http://www.epa.gov/superfund/community/cag/pdfs/ci_handbook.pdf.

USEPA. *Community Involvement Toolkit*. Available at <http://www.epa.gov/superfund/community/toolkit.htm>.

Wikipedia 2021a. Entry for Carter County. https://en.wikipedia.org/wiki/Carter_County,_Missouri. December 29, 2021.

Wikipedia 2021b. Entry for Van Buren. https://en.wikipedia.org/wiki/Van_Buren,_Missouri. December 29, 2021.

Wikipedia 2021c. Entry for Shannon County. https://en.wikipedia.org/wiki/Shannon_County,_Missouri. December 29, 2021.

Wikipedia 2021d. Entry for Akers. https://en.wikipedia.org/wiki/Akers,_Missouri. December 29, 2021.



Appendix A: Glossary

Definitions for CERCLA-related words found throughout the CIP are provided below.

Action Memo. An action memo provides a concise written record of the decision selecting a remedial action. It describes the site's history, current activities, and health and environmental threats; outlines the proposed actions and costs; and documents approval of the proposed action by the proper headquarters or regional authority.

Administrative Record File: A file that contains all information considered or relied upon by the lead agency to make its decision on the selection of a response action under CERCLA. See Appendix B, Administrative Record File and Information Repository Details, for further information on the Site administrative record file.

CERCLA (Comprehensive Environmental Response, Compensation, and Liability Act): A federal law, commonly known as "Superfund," which Congress enacted in 1980 and amended in 1986 and 2002. The law provides broad federal authority to respond directly to releases or threatened releases of hazardous substances that may endanger public health or welfare or the environment; establishes the categories of persons who are liable for such releases; and outlines a framework for investigating and responding to releases and threatened releases of hazardous substances where the lead agency determines it is necessary. CERCLA generally authorizes three types of cleanup actions: emergency response actions, removal actions, and remedial actions.

Cleanup: Used in this document to describe actions taken to address a release or threat of a release of hazardous substances, pursuant to CERCLA, that could affect public health or welfare or the environment. The word "cleanup" is sometimes used interchangeably with the terms remedial action, removal action, response action, remedy, remediation, or corrective action.

Community Interview: Interviews conducted by the lead agency as part of the process of preparing a Community Involvement Plan. For most response actions, the NCP requires the lead agency to conduct community interviews to determine appropriate activities to ensure public involvement in Site-related decisions.

Community Involvement Plan (CIP): A plan that explains how NPS intends to enable meaningful community involvement throughout the cleanup process by specifying planned community involvement activities to address community needs, concerns, and expectations identified through community interviews and other means.

Engineering Evaluation/Cost Assessment (EE/CA). The EE/CA investigates contamination, identifies removal action objectives to protect human health and the environment, and develops and evaluates potentially viable alternatives for cleanup in accordance with the NCP using the criteria of effectiveness, implementability, and cost. The EE/CA report also recommends a remedial alternative for cleanup.



Hazardous Substance: Any one of the more than 800 substances defined under CERCLA and the NCP as potentially posing a threat to human health or the environment. Hazardous substances include materials defined as ignitable, corrosive, reactive, or toxic under the Resource Conservation and Recovery Act (RCRA), as well as additional substances listed under the Clean Water Act and hazardous air pollutants listed under the Clean Air Act.

Information Repository: A location open to members of the general public where a collection of documents (including the administrative record file) relevant to a particular CERCLA Site is made available for public review and copying. See Appendix B, Administrative Record File and Information Repository Details, for the locations and addresses of the Big Spring and Upper Current Small-Arms Firing Ranges, Ozark National Scenic Riverways information repositories.

Lead Agency: The government agency with the primary authority to investigate, plan and implement a response action under CERCLA and the NCP at a particular site.

National Oil and Hazardous Substances Pollution Contingency Plan (NCP): More commonly called the National Contingency Plan or NCP, it is the federal government's regulatory blueprint for responding to both oil spills and releases and threatened releases of hazardous substances. The NCP is the result of our country's efforts to develop a national response capability and promote overall coordination among the hierarchy of responders and contingency plans. The regulations, published at 40 C.F.R. Part 300, detail how CERCLA is to be implemented.

Non-Time-Critical Removal Action: A removal action conducted when the lead agency determines that there is a planning period of at least six months before on-site activities must be initiated.

Notice of Availability: A formal notice announcing the issuance and public availability of a document (e.g., proposed plan) or documents (e.g., the administrative record file or updates thereto). A Notice of Availability is also issued when the information repositories are established. The notice may also announce commencement of a public comment period.

Public Comment Period: A period during which the public can formally review and comment on various documents and proposed response actions.

Removal Action: A type of CERCLA response action with a streamlined planning process. A removal action is conducted to address all or a part of a release or threatened release of hazardous substances when the release requires an expedited, time-critical response, or when the release is of limited size and complexity such that streamlined response planning is appropriate. There are two types of removal actions – time-critical and non-time-critical; sometimes emergency response actions (undertaken by the U.S. Environmental Protection Agency) are referred to as removal actions. The term refers both to the entire removal response action, as well as just the cleanup phase of such an action.



Response Action: The most general CERCLA term used to describe any action taken to respond to a release or threatened release of hazardous substances to protect the public health or welfare or the environment. The term includes all phases of the response, from investigation through monitoring and even enforcement activities. There are generally three types of CERCLA response actions that may be undertaken by NPS as the lead agency: time-critical removal actions, non-time-critical removal actions, and remedial actions. The response action at the Big Spring and Upper Current Small-Arms Firing Ranges, Ozark National Scenic Riverways is a non-time-critical removal action.

Responsiveness Summary: Document summarizing the significant comments received during a public comment period and documenting the lead agency's responses to the comments.

Site: The Big Spring and Upper Current Small-Arms Firing Ranges, Ozark National Scenic Riverways, which comprises the area contaminated or potentially contaminated by a release or threatened release of hazardous substances. The Big Spring SAFR is located approximately 4 miles south of South Van Buren and 2 miles west of Long Bay Hollow portion of the Current River and 0.25 miles east of State Highway Z. It is accessible via unpaved access road running west off State Highway Z at latitude 36.927011 North, -89.020216 East. The Upper Current SAFR is located near Akers in Shannon County, MO, approximately 0.7 miles east of the Current River in proximity to Welch Landing and 0.3 miles west of State Highway K. It is accessible via unpaved access road running west off State Highway K at latitude 37.3984 North, -90.43326 East.



Appendix B: Administrative Record File and Information Repository Details

The Site administrative record file is proposed to be maintained in the information repository in the NPS OZAR Headquarters in Van Buren, Missouri, which may be reviewed at the following information repositories during the hours indicated:

Location	
Location Name:	NPS Ozark National Scenic Riverways
Address:	404 Watercress Drive, Van Buren, MO 63965
Days and Hours:	M-F, 8:00 am to 4:00 pm
For file review appointments, contact:	
Name:	Eric Daniels
Title:	Chief of Resource Management
Organization:	Ozark National Scenic Riverways
Phone:	(573) 323-4868
Email:	eric_daniels@nps.gov
Days and Hours:	M-Th, 7:00am to 4:00 pm



Appendix C: Community Fact Sheets and Community Updates

No fact sheets or community updates have been prepared for this site.



Appendix D: Community Interview Questionnaire

1. Knowledge.
 - a) Have you heard of the Big Spring and/or the Upper Current Small-Arms Firing Ranges?
 - b) Do you generally know where these Sites are?
2. General Use.
 - a) Have you ever visited the Sites or nearby area?
 - b) If so, what type of activities did you do there?
 - c) Do you know how *other* people use this area?
3. Land Use or Cultural Issues.
 - a) Do you or your group have any issues related to land use or cultural concerns at or near the Sites that we should be aware of?
4. Level of Concern.
 - a) Do you or your group have any concerns about environmental issues or logistics?
 - b) On a scale of one to ten, how would you rate your concern or interest in the Sites?
5. Contact.
 - a) If you had a question about the Sites, how would you go about getting an answer?
6. Past NPS Interactions.
 - a) Have you contacted the NPS in the past on this or other issues?
 - b) How would you rate that experience?
 - c) What are your thoughts about the NPS?
 - d) Do you think there are any perceived barriers to communication with the NPS?
7. Community Updates.
 - a) The NPS format for community updates includes: site background, environmental investigations, next steps, community involvement opportunities, and contact information.
 - b) Does this sound like the information you would like to get?
 - c) Can you think of anything else you (or your group) would like to know?
8. Providing Information.
 - a) What do you think would be the best way to get information to you (Community Updates as well as other information)?
 - b) Can you think of other ways that might work better for other people?
 - c) Is there a particular newspaper or website that you find convenient and useful?
 - d) Is email a good option?
 - e) Are you aware of any need for translation services, disability services, or technical services?
 - f) Do you think most people have access to electronic communications?



9. Opportunities to Get Involved. There are opportunities in the investigation and cleanup process for the public to provide input and be involved (such as when a proposed plan for cleanup is issued).
 - a) Would you like to be contacted with information on how to participate?
 - b) Are there other people who you think might be interested?
10. Meetings.
 - a) Where do you think is the best place to have a public meeting in the Yosemite Valley?
 - b) What time is best? Would *you* go to a public meeting?
11. Other.
 - a) Can you think of any other people or groups we should talk to about this site?
 - b) Do you have anything else to add?



Appendix E: Contact Information

The NPS will update contact information as necessary.

Site-Specific Contacts

For information about Site cleanup activities, please contact:

	Site Spokesperson	Park Contact
Name:	Eric Daniels	Eric Daniels
Title:	Chief of Resource Management	Chief of Resource Management
Organization:	National Park Service, Ozark National Scenic Riverways	National Park Service, Ozark National Scenic Riverways
Address:	PO Box 490 Van Buren, MO 63965	PO Box 490 Van Buren, MO 63965
Phone:	573-323-4868; 573-996-6605	573-323-4868; 573-996-6605
Email:	eric_daniels@nps.gov	eric_daniels@nps.gov

	NPS Region Contact	NPS Headquarters Contact
Name:	James Bissaillon	Eric Daniels
Title:	Contracting Officer	Chief of Resource Management
Organization:	NPS DOI Regions 3,4,5	National Park Service, Ozark National Scenic Riverways
Address:	MWRO Major Acquisition Buying Office, 601 Riverfront Dr., Omaha, NE 68102	PO Box 490 Van Buren, MO 63965
Phone:	402-661-1690	573-323-4868; 573-996-6605
Email:	james_bissaillon@nps.gov	eric_daniels@nps.gov

Elected Official Contacts

Federal Elected Officials

	Senator	Senator
Name:	Senator Roy Blunt	Senator Josh Hawley
Title:	Missouri Senator	Missouri Senator
Address:	2740 B East Sunshine Springfield, MO 65804	555 Independence Street, #1600 Cape Girardeau, MO 63703
Phone:	417-877-7814	573-334-5995
Email or Webform:	https://www.blunt.senate.gov/contact/contact-roy	https://www.hawley.senate.gov/contact-senator-hawley



	House Representative
Name:	Representative Jason Smith
Title:	Missouri District 8 Representative
Address:	2725 North Westwood Blvd., Suite 5A
Phone:	Poplar Bluff, MO 63902
Email or Webform:	https://jasonsmith.house.gov/contact/

Missouri Elected Officials

	Governor	State Senator
Name:	Mike Parson	Jason Bean
Title:	Governor	Senator
Address:	P.O. Box 720 Jefferson City, MO 65102	201 W Capitol Ave., Rm. 334 Jefferson City, MO 65101
Phone:	(573) 751-3222	(573) 751-4843
Email or Webform:	https://governor.mo.gov/contact-us	https://www.senate.mo.gov/DistrictWebApplication/Contact?DistrictNumber=25

	State House Representative	State House Representative
Name:	Ron Copeland	Darrell Atchison
Title:	Representative	Representative
Address:	201 West Capitol Avenue Room 115-F Jefferson City, MO 65101	201 West Capitol Avenue Room 115-B Jefferson City, MO 65101
Phone:	(573) 751-2264	(573) 751-1066
Email or Webform:	Ron.Copeland@house.mo.gov	Darrell.Atchison@house.mo.gov



Federal Agencies

	EPA Region 7	U.S. Fish and Wildlife Service
Name:	Cecilia Tapia	Karen Herrington
Title:	Director of Laboratory Services and Applied Science Division	Ecological Services Field Supervisor
Organization:	EPA Region 7	U.S. Fish and Wildlife Service Missouri Ecological Services Field Office
Address:	Regional Office 11201 Renner Boulevard Lenexa, KS 66219	101 Park DeVille Drive, Suite A Columbia, MO 65203
Phone:	(913) 551-7733	(573) 234-2132
Email:	Tapia.Cecilia@epa.gov	Karen_Herrington@fws.gov

Missouri Agencies

	Missouri Department of Natural Resources	State Historic Preservation Office
Name:	Kyra Moore	
Title:	Director of the Division of Environmental Quality	
Organization:	Missouri Department of Natural Resources	State Historic Preservation Office
Address:	1101 Riverside Drive PO Box 176 Jefferson City, MO 65102	P.O. Box 176 Jefferson City, MO 65102
Phone:	(573) 751-0763	(573) 751-7858
Email or Webform:	Kyra.moore@dnr.mo.gov	https://mostateparks.com/content/state-historic-preservation-office-contact-information

	Missouri Department of Health and Senior Services	Missouri Department of Conservation
Name:	Donald Kauerauf	
Title:	Director	
Organization:	Missouri Department of Health and Senior Services	Missouri Department of Conservation
Address:	912 Wildwood PO Box 570 Jefferson City, MO 65102	2901 W Truman Blvd Jefferson City, MO 65102
Phone:	(573) 751-6001	(573) 751-4115
Email:	info@health.mo.gov	https://mdc.mo.gov/contact-us



Local School Districts and Schools

	Green Forest School District	Oak Hill School District
Name:	Conrad Prugh	Aibeen Holland
Title:	Superintendent	Superintendent
Organization:	Green Forest School District	Oak Hill School District
Address:	6111 Hwy F Salem, MO 65560	6200 South Highway 19 Salem, MO 65560
Phone:	(573) 729-3902	(573) 729-5618
Email:	cprugh@gfr2.k12.mo.us	office@oakhillr1.k12.mo.us

	Summersville School District	Van Buren School District
Name:	Rick Stark	Clay LaRue
Title:	Superintendent	Superintendent
Organization:	Summersville School District	Van Buren School District
Address:	P.O. Box 198 525 Rogers Ave Summersville, MO 65571	906 Broadway P.O. Box 550 Van Buren, MO 63965
Phone:	(417) 932-4045	(573) 323-4295
Email:		clarue@vanburen.k12.mo.us

Community Organizations and Environmental Groups

	Sierra Club
Name:	Sierra Club
Title:	
Organization:	Sierra Club, Missouri Chapter
Address:	2818 Sutton Boulevard St. Louis, MO 63143
Phone:	(314) 644-1011
Email:	missouri.chapter@sierraclub.org

Local Medical Clinic

	Salem Memorial District Hospital	Big Springs Medical Clinic
Organization:	Salem Memorial District Hospital	Big Spring Medical Clinic
Address:	P.O. Box 774 35629 Highway 72 Salem, MO 65560	405 Main St Van Buren, MO 63965
Phone:	(573) 729-6626	(573) 323-4253
Email:	postmaster@smdh.net	centraloffice@mohigh.org



Media

Online News

	Ozark Radio News
Title:	Ozark Radio News
Link:	https://www.ozarkradionews.com/
Contact Name:	
Contact Address:	983 E US HWY 160 West Plains, MO, 65775
Contact Phone:	(417) 256-3131
Website:	https://www.ozarkradionews.com/contact

Newspapers

	The Salem News	The Current Local Newspaper
Title:	The Salem News	The Current Local Newspaper, Van Buren Missouri
Link:	https://www.thesalemnews.com/	https://www.currentlocal.com
Contact Name:		
Contact Address:	P.O. Box 798 500 N. Washington St. Salem, MO 65560	504 Ash St. PO Box 100 Van Buren, MO 63965
Contact Phone:	(573) 729-4126	573-323-4515
Contact Email or Website:	salemnews@thesalemnews.com online.com	currentlocal@centurytel.net

Radio Stations

	KRCU/KDMC Public Radio 88.7	KSMU Ozarks Public Radio 91.1
Title:	KRCU/KDMC Public Radio 88.7	KSMU Ozarks Public Radio 91.1
Link:	https://www.krcu.org/	https://www.ksmu.org/
Contact Name:		Rachel Knight, General Manager
Contact Address:	One University Plaza MS 0300 Cape Girardeau, MO 63701	901 South National Ave. Springfield, MO 65897
Contact Phone:	(573) 651-5070	(417) 836-5878
Contact Email:	comments@krcu.org	ksmu@missouristate.edu



	Ozark Radio News
Title:	KWPM 105.1 News; KDY 102.5 Country; KUKU 100.3 Country; QW94 Classic Rock; The Fox 96.9
Link:	https://www.ozarkradionews.com/local-radio
Contact Name:	
Contact Address:	983 E US HWY 160 West Plains, MO, 65775
Contact Phone:	(417) 256-3131
Contact Email or Webform:	https://www.ozarkradionews.com/contact

Television Stations

	KSDK 5 - NBC	KFVS 12 - CBS
Title:	KSDK 5 - NBC	KFVS 12 - CBS
Link:	https://www.ksdk.com/	https://www.kfvs12.com/
Contact Name:		
Contact Address:	1000 Market Street St. Louis, MO 63101	310 Broadway Cape Girardeau, MO 63701
Contact Phone:	314-421-5055	(573) 335-1212
Contact Email:	Programming@ksdk.com	manager@kfvs12.com

Other

Title:		
Link:		
Contact Name:		
Contact Address:		
Contact Phone:		
Contact Email or Webform:		



Appendix F: NCP Community Involvement Requirements

The NCP specifies the following community involvement requirements for the non-time-critical removal action at this Site.

Removal Actions

Non-Time-Critical Removal Action

Required When	Requirement	Citation– 40 C.F.R.
	Designate a Site spokesperson.	§ 300.415(n)(1)
No later than when the Engineering Evaluation and Cost Analysis Approval Memorandum is signed	Establish two information repositories (one at a central location and one at or near the Site) and establish an administrative record file and place in the information repositories.	§ 300.415(n)(4)(i); § 300.800(a); § 300.805(a)
	Publish notice of availability of the information repositories and the administrative record file in a major local newspaper of general circulation.	§ 300.415(n)(4)(i); § 300.820(a)(1)
Prior to completion of the Engineering Evaluation and Cost Analysis	Conduct community interviews.	§ 300.415(n)(4)(i)
	Prepare and issue a Community Involvement Plan.	§ 300.415(n)(4)(i)
Upon completion of Engineering Evaluation and Cost Analysis and publication of the Engineering Evaluation and Cost Analysis Report	Publish notice of availability and brief description of the Engineering Evaluation and Cost Analysis Report in a major local newspaper of general circulation.	§ 300.415(n)(4)(ii); § 300.820(a)(1)
	Provide a public comment period of at least 30 days for submission of written and oral comments. Upon timely request during the public comment period, extend the public comment period by a minimum of 15 additional days.	§ 300.415(n)(4)(iii); § 300.820(a)(2)
	After the close of the public comment period, prepare a written response to significant comments received during the public comment period; consider and respond to significant comments submitted before the public comment period, as appropriate; place any such responses into the administrative record file.	§ 300.415(n)(4)(iv); § 300.820(a)(2)