



The National Park Service is seeking public comments on a proposed project to Replace and Rehabilitate Docks at Fort Sumter and Fort Moultrie National Historical Park

The National Park Service is in the initial planning phase to replace and rehabilitate the docks at Fort Sumter and Fort Moultrie National Historical Park (the park). The park is located southeast of Charleston, South Carolina near the entrance of Charleston Harbor. Fort Sumter is located on a man-made island in the harbor, east of James Island. Fort Moultrie is located on Sullivan's Island, just outside of Charleston. The docks at each fort are an essential part of the functionality of the park. Both the Fort Sumter and Fort Moultrie docks have reached the end of their life cycle and are currently deteriorating. The National Park Service proposes to replace the docks at Fort Sumter and Fort Moultrie.

Currently, the docks provide limited Architectural Barriers Act (ABA) accessibility and do not adequately serve a variety of vessel types. The construction of the new docks would eliminate structural deficiencies of the current docks, provide critical infrastructure for greater than 30 years, and would account for climate change and increasing harbor traffic projections. The replacement of the dock at Fort Sumter would better accommodate vessels, enhance visitor experience, and ensure safe, continuous public and administrative access to the fort. The replacement of the dock at Fort Moultrie would also ensure administrative access for park operations and facilities at Sullivan's Island that service Fort Sumter and provide enhanced public recreational use.

At this time, we are initiating a 30-day comment period and we invite you to participate in the planning process by submitting your ideas. We would like to hear your thoughts on the preliminary options, potential issues with park resources, and any other ideas you feel are relevant and important for this planning process. We hope that you will join us in this important discussion regarding the future of your public lands by submitting comments. Once we have received and considered your comments, we will move to the next phase, which will include assessing and coordinating compliance needs under the National Environmental Policy Act (NEPA) and other environmental regulations, such as the National Historic Preservation Act. As we move forward with planning, we encourage you to stay connected and be an active participant in this planning process.

Virtual Public Meeting

Please join us for a virtual public meeting to learn about the project to replace and rehabilitate the docks at Fort Sumter and Fort Moultrie National Historical Park.

Meeting Information:

Thursday, May 25, 2023
6:00 to 8:00 pm Eastern Time

Follow this link to join the meeting:
<https://bit.ly/NPSFortSumter052023>

NPS staff will provide information about the dock replacement and rehabilitation options and be available to answer questions. This meeting will be recorded and posted to the project website (<https://parkplanning.nps.gov/SumterMoultrieDocks>) following the meeting.

Thank you for your interest and participation.

Fort Sumter and Fort Moultrie Docks

Fort Sumter, the park's signature resource, can only be accessed by boat. Visitors travel to Fort Sumter on concessionaire operated ferry boats that depart from two locations: Liberty Square Visitor Education Center in downtown Charleston and Patriots Point Naval and Maritime Museum in Mount Pleasant. When ferries arrive at Fort Sumter, visitors disembark at the Fort Sumter dock located on the northwest side of the island.

The Fort Sumter dock is a concrete, T-shaped pier that recently underwent emergency stabilization repair in January 2022. Despite this repair, a subsequent Emergency Dock Inspection Report (June 2022) identified new structural deficiencies (e.g., newly developed cracks in existing deck planks, cracks and spalling in several lower deck planks at the "T" section of the dock), which may contribute to failure of the dock. Additionally, damage from Hurricane Ian in September 2022 has further shortened the lifespan of the dock.

The Fort Moultrie dock is located on the cove side of the park property on Sullivan's Island. The dock at Fort Moultrie is the docking and storage location for all park boats, supporting parkwide operations, and is partially open to visitors for recreational use. The Fort Moultrie dock also provides public access for fishing. The dock is 45 years old and is showing advanced signs of deterioration. A failure of the Fort Moultrie dock would have large impacts on park operations. The current use of the dock results in conflict between visitor use and administrative use.

Preliminary Design Options

The National Park Service is currently considering options to replace and rehabilitate the docks at Fort Sumter and Fort Moultrie. The design options presented on the following pages in this newsletter are only conceptual renderings. As these options are refined through the NEPA process, those carried forward for full consideration would be fully designed.



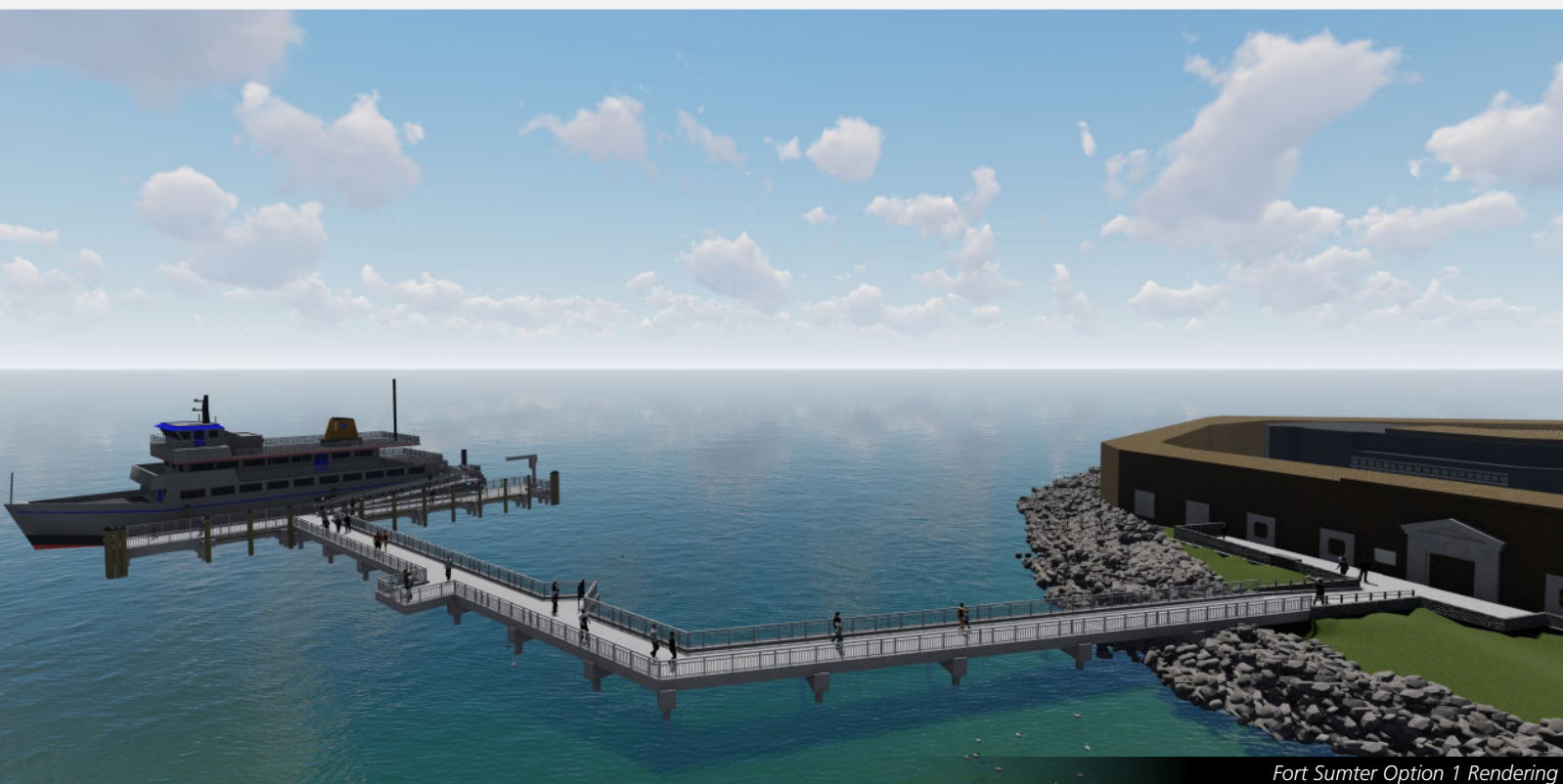
The Fort Moultrie dock currently has a concrete deck with metal railings

Fort Sumter Dock Options

Option 1: A new “T” dock would be constructed in a different footprint to the west. The new dock would extend the entry heading into the fort and would maintain a similar docking procedure. Two bump outs for visitors would be constructed. The existing dock would remain in place and operational during construction.



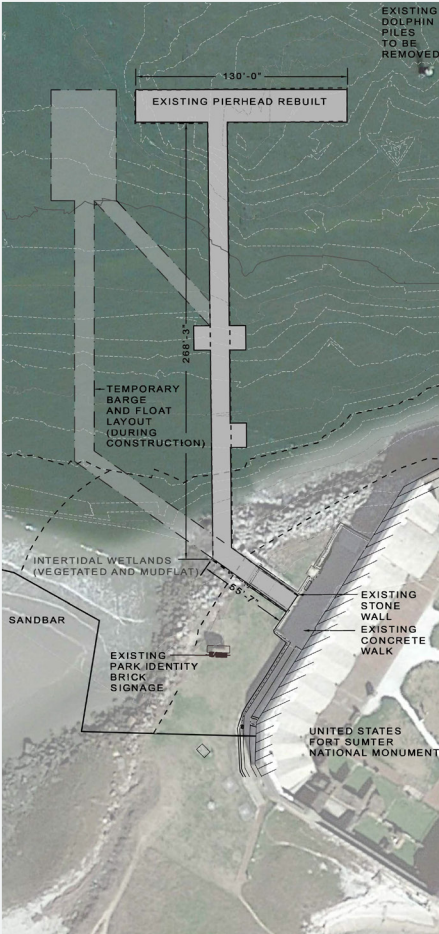
Fort Sumter Option 1 Plan View



Fort Sumter Option 1 Rendering

Fort Sumter Dock Options

Option 2: A new “T” dock would be rebuilt in the existing footprint. A temporary barge would be located to the west of the existing dock for vessels to berth and unload passengers during construction. The new “T” dock would maintain a similar docking procedure. Two configurations are being considered.



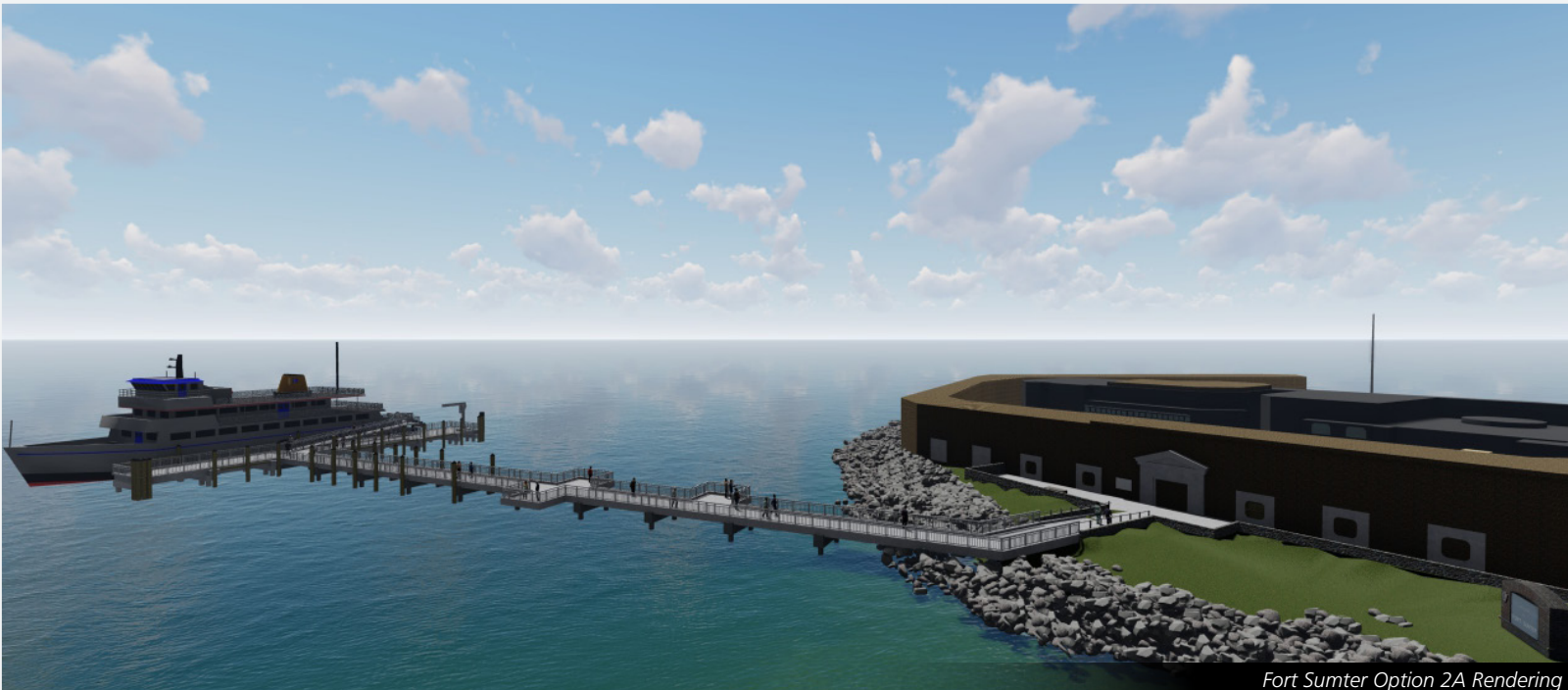
PLAN - OPTION 2A



Fort Sumter Option 2 Plan View - Option 2A on the left and Option 2B on the right

PLAN - OPTION 2B

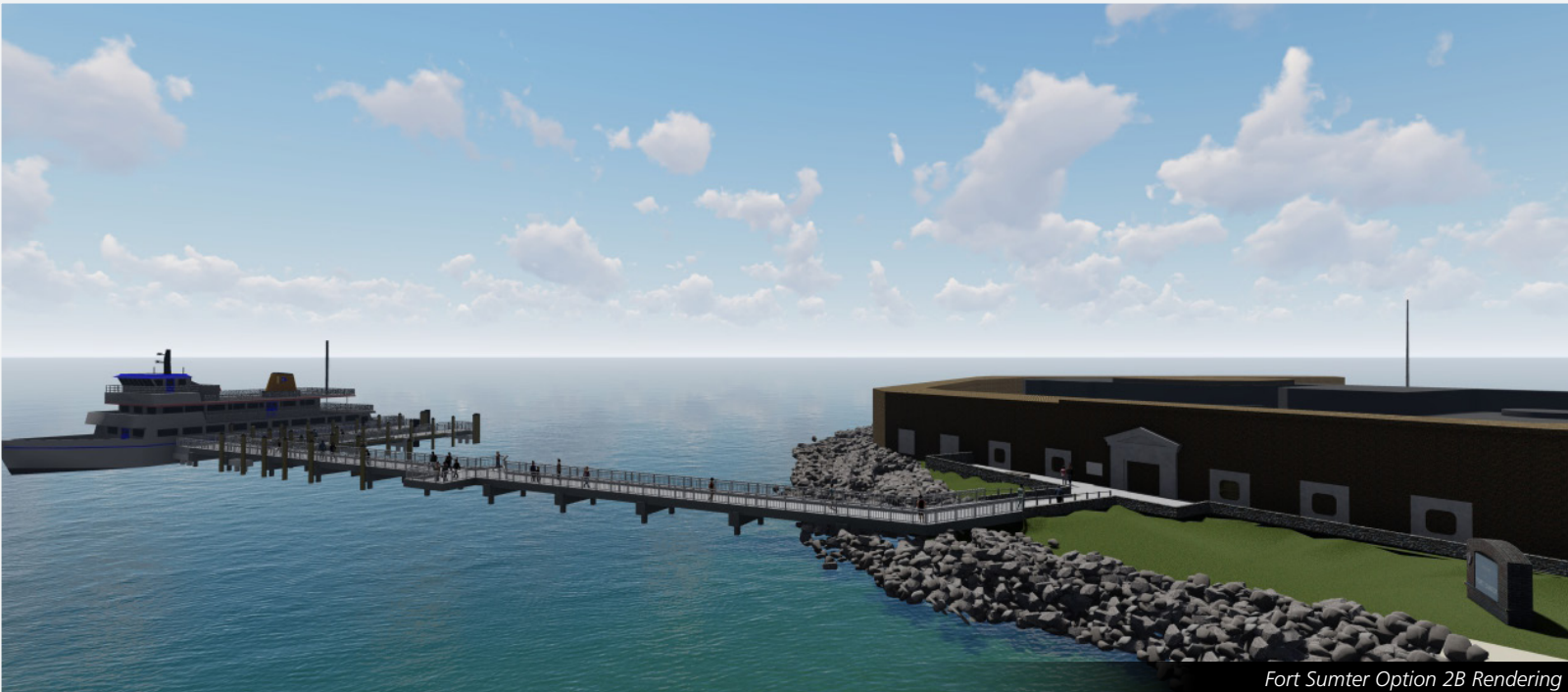
Option 2A: Option 2A would replace the existing pierhead in place and construct three bump outs for visitors.



Fort Sumter Option 2A Rendering

Fort Sumter Dock Options

Option 2B: Option 2B would remove a portion of the existing pierhead and replace it with two parallel pierheads. Two bump outs for visitors would be constructed.



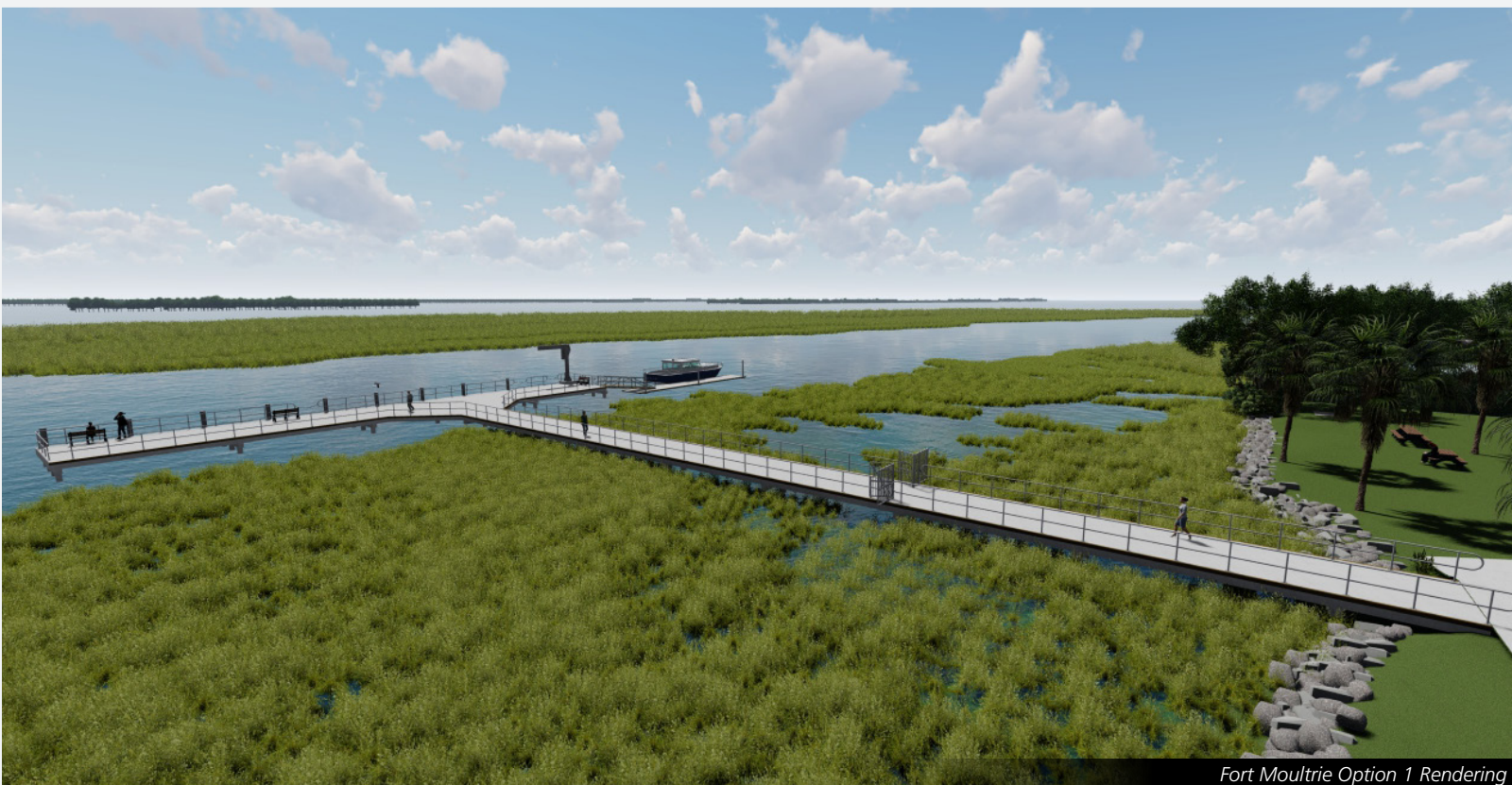
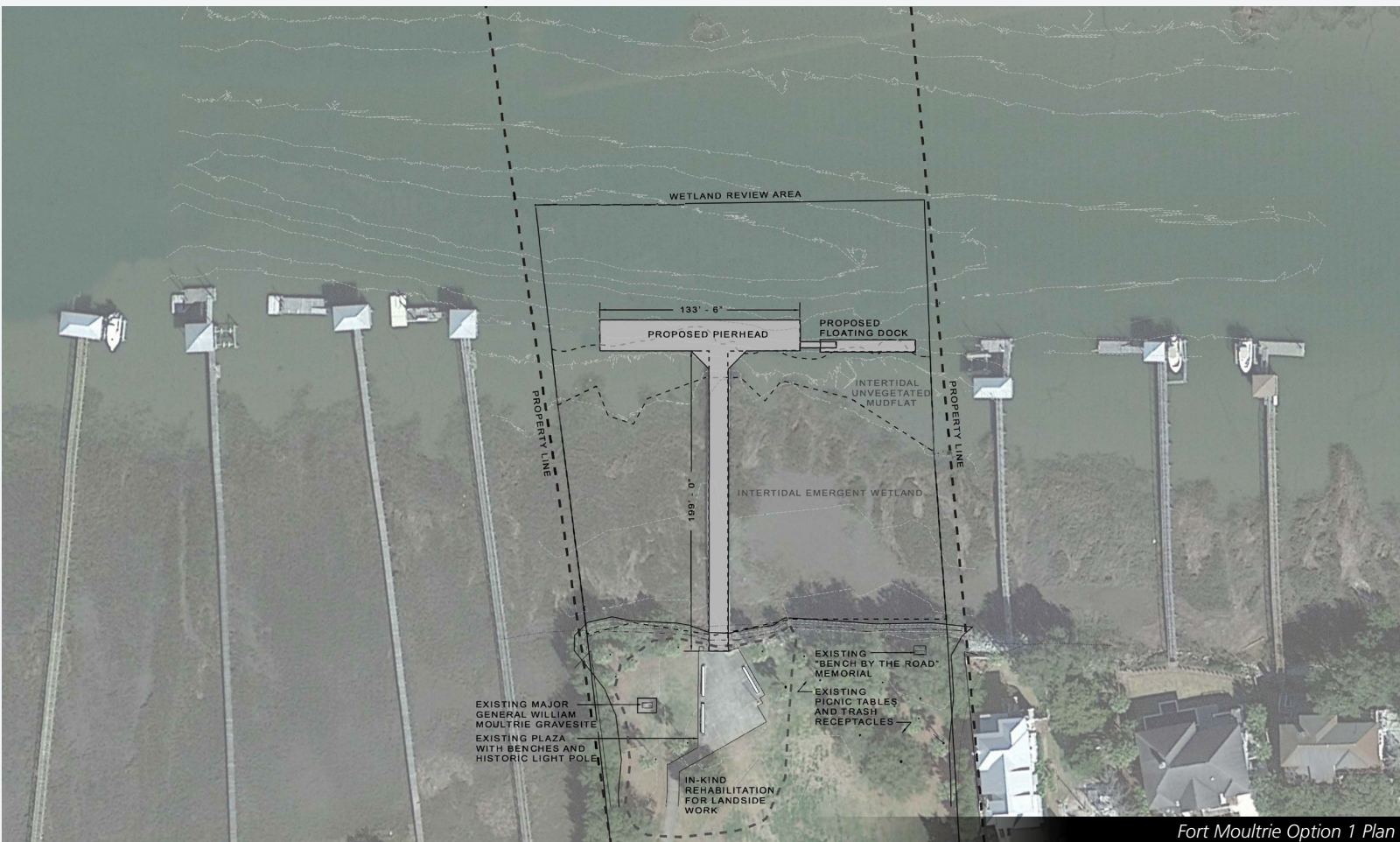
Fort Sumter Dock Options Considered but Dismissed

During the initial planning for this project, the National Park Service considered other options for replacing and rehabilitating the dock at Fort Sumter. The following table presents additional options initially developed for replacing the dock at Fort Sumter and the rationale for dismissing them from further consideration.

Concept	Description	Rationale for Dismissal
Option 3	A straight-line dock would be constructed to the west and include a separate berthing facility. Berthing dolphins (piles or similar structure that extends above the water surface) would be installed and would allow two separate access points for vessels loading and unloading during high and low tide. Three bump outs would be constructed for visitors. The existing dock would remain in operation during construction, and the new dock would be constructed in a different footprint.	This configuration would prevent boats from docking safely in the wind and create operational interruptions.
Option 4	A dock would extend from the fort at an angle to the west with the "T" in line with the existing "T" dock. The new "T" dock would maintain a similar docking procedure and could be built with minimal obstruction to the current operations. Three bump outs would be constructed for visitors.	This option would have a higher potential for operational interruptions than other options due to the active shoaling that is growing from the west of the current pierhead.
Option 5	A dock would extend from the existing concrete walkway to the east of the existing dock. The new dock would be built with minimal obstruction to the current operations. Two bump outs would be constructed for visitors.	This option would expose the pier, pierhead, ferries, and visitors to the park's worst sea conditions that have an east and/or northeast fetch.

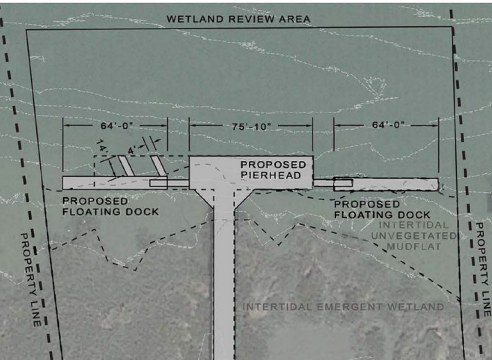
Fort Moultrie Dock Options

Option 1: A new dock would be constructed within the existing footprint. A temporary barge would not be available; therefore, the dock would be closed during construction. The current berthing and loading conditions would remain the same.

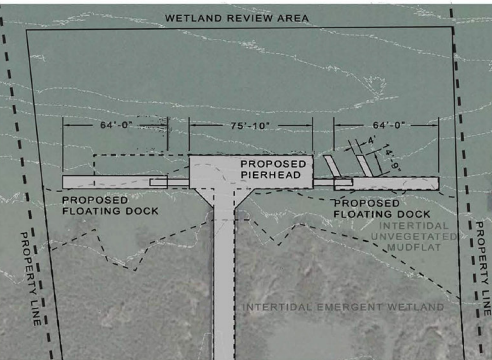


Fort Moultrie Dock Options

Option 2: A new floating dock with finger piers would be constructed within the existing footprint to accommodate three park vessels. Fishing would be limited to one section of the dock. The existing dock would be closed during construction. An ABA pathway near the General William Moultrie burial site and picnic table would be constructed on land. Two options are being considered.



PLAN - OPTION 2A

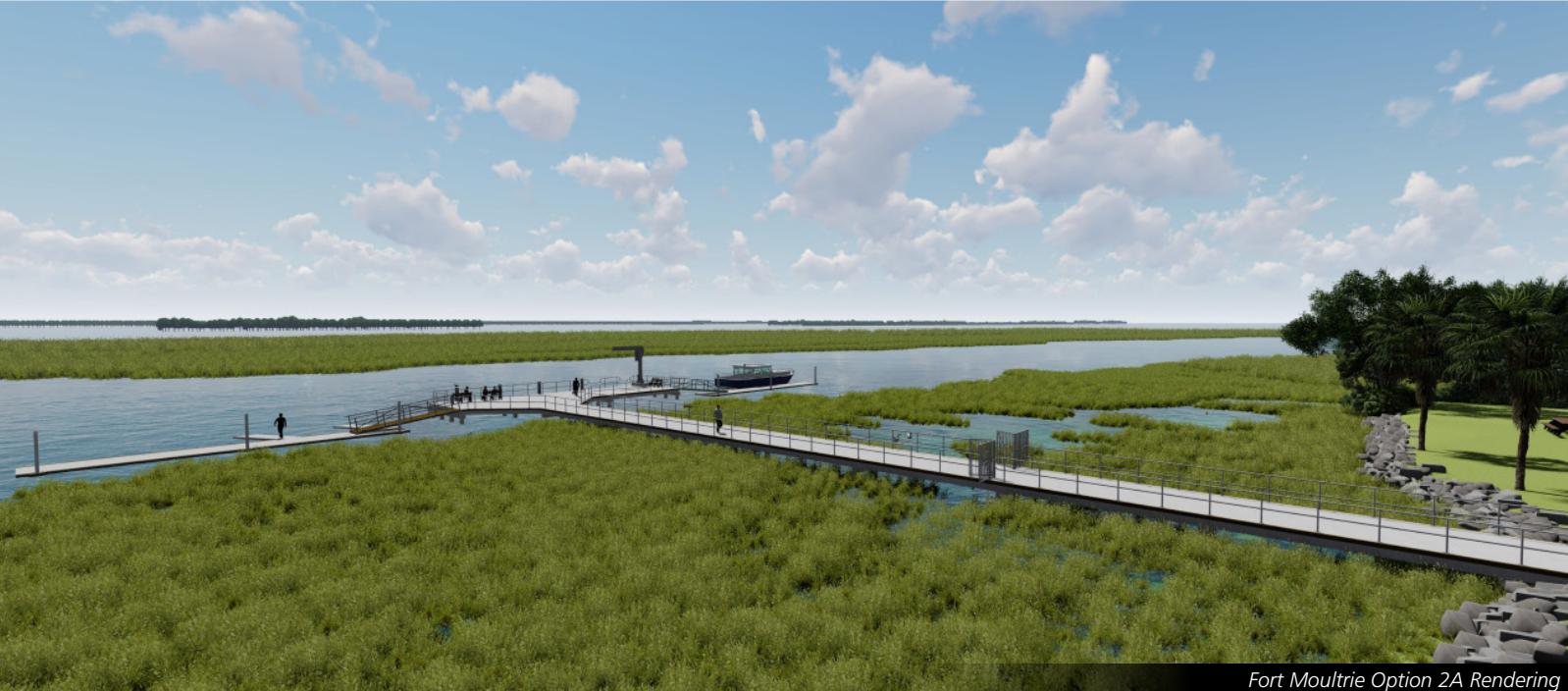


PLAN - OPTION 2B



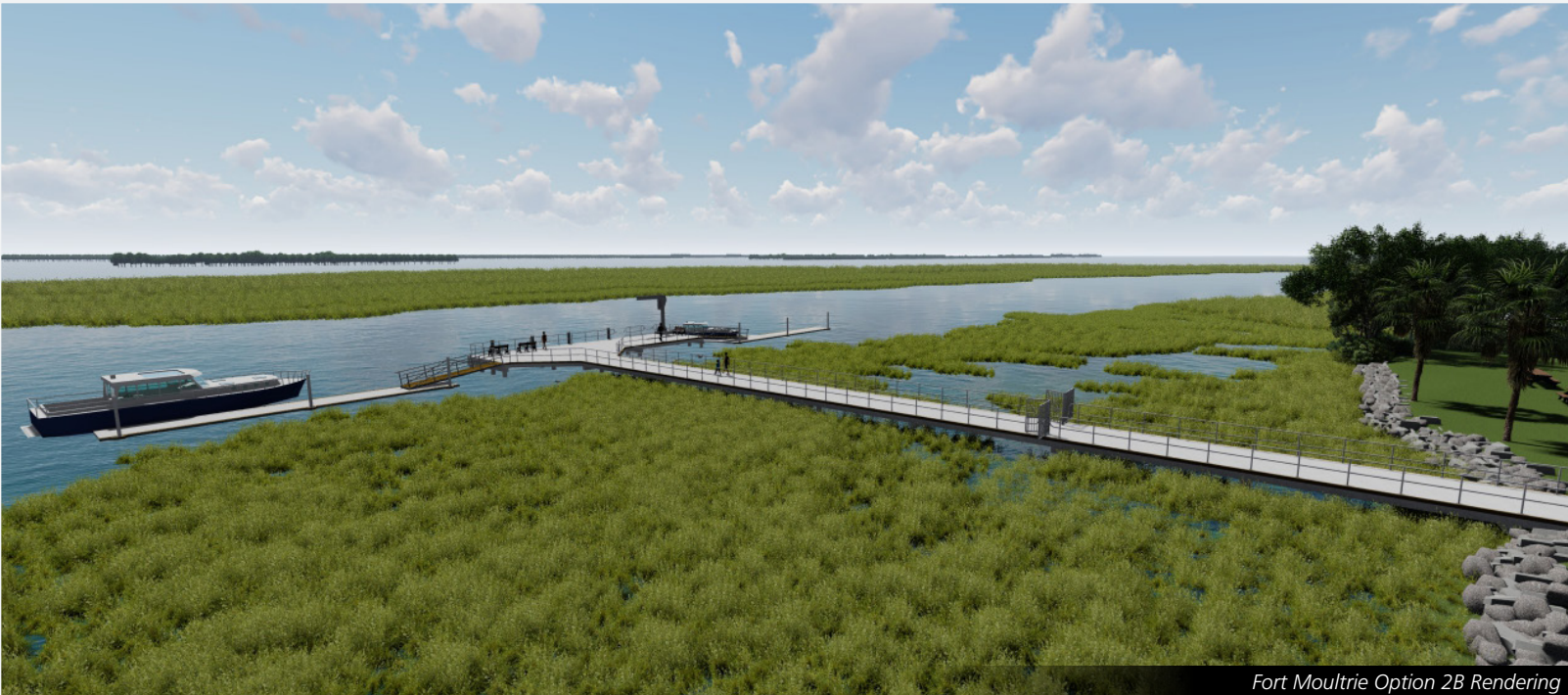
Fort Moultrie Option 2 Plan View - Option 2A on the top left and Option 2B on the bottom left

Option 2A: Option 2A would include finger piers attached to the floating dock to the east.



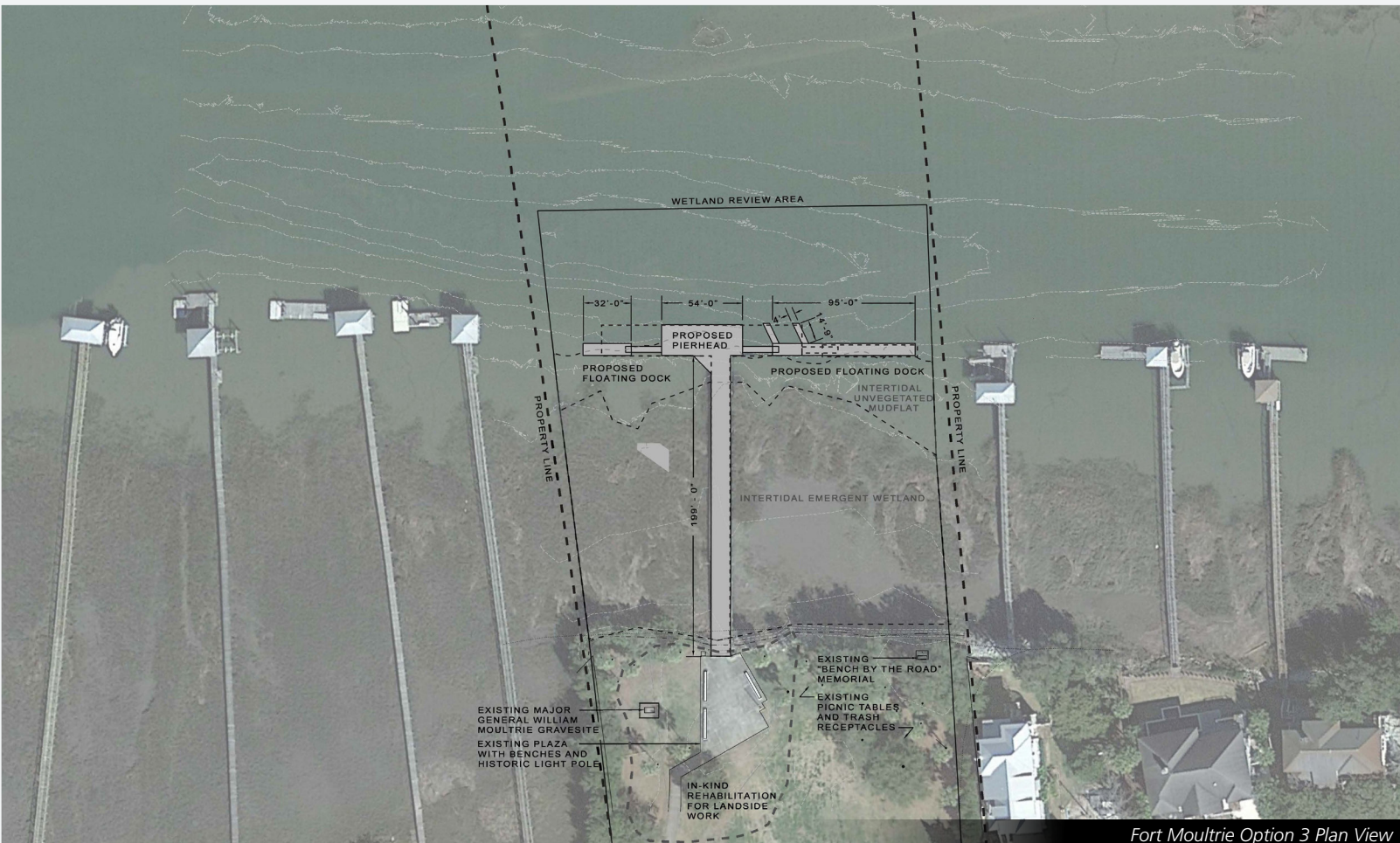
Fort Moultrie Dock Options

Option 2B: Option 2B would include finger piers attached to the floating dock to the west.



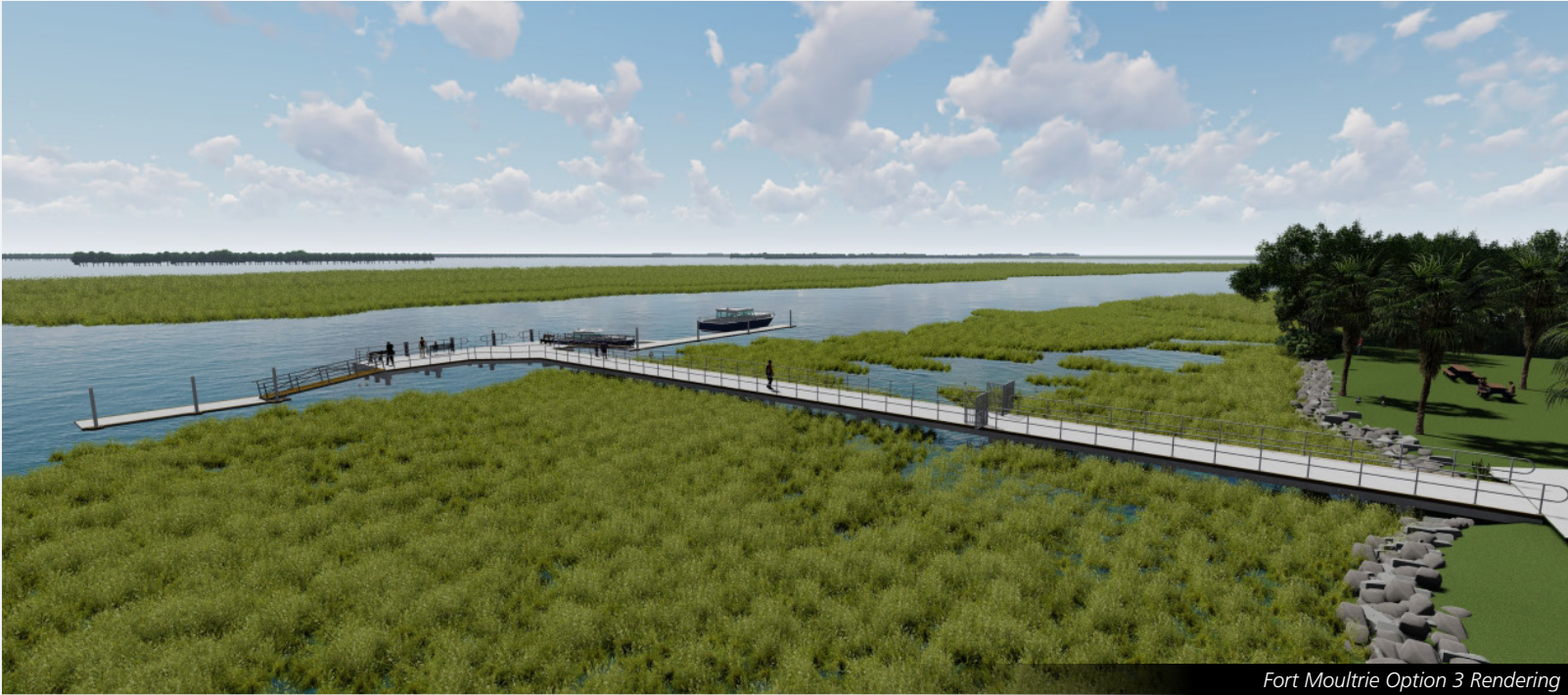
Fort Moultrie Option 2B Rendering

Option 3: A new straight-line dock would be constructed. Floating docks would be constructed on the sides of the dock to allow for separate National Park Service and visitor uses. A kayak and canoe launch and visitor docking location with an ABA kayak rack would be installed. An ABA walkway near the General William Moultrie burial site would be constructed on land.



Fort Moultrie Option 3 Plan View

Fort Moultrie Dock Options



Fort Moultrie Option 3 Rendering

Scoping Issues to be Addressed

During the civic engagement period, the NPS is seeking input from the public and agencies on relevant issues, potential alternatives, concerns, opportunities, or topics that should be addressed during the planning effort.

Preliminary impact topics that have been identified for analysis in the compliance document include:

- Special-status species and their habitats
- Floodplains
- Wetlands
- Archeological resources
- Cultural landscapes
- Historic resources
- Visitor use and experience
- Health and safety



A ferry is docked at the Fort Sumter dock

Get Involved

We Want to Hear from you!

Your involvement in the planning process is critical for the completion of a successful project. Please join us for the virtual public meeting on Thursday, May 25, 2023 from 6:00 to 8:00 pm by following this link:

<https://bit.ly/NPSFortSumter052023>

The civic engagement period for this project will run for 30 days, during which time public comments are encouraged. An additional opportunity for public involvement will be provided later in the planning process, including an opportunity for the public to review and comment on the compliance document when it is released next winter.

Please submit your comments by June 16, 2023.

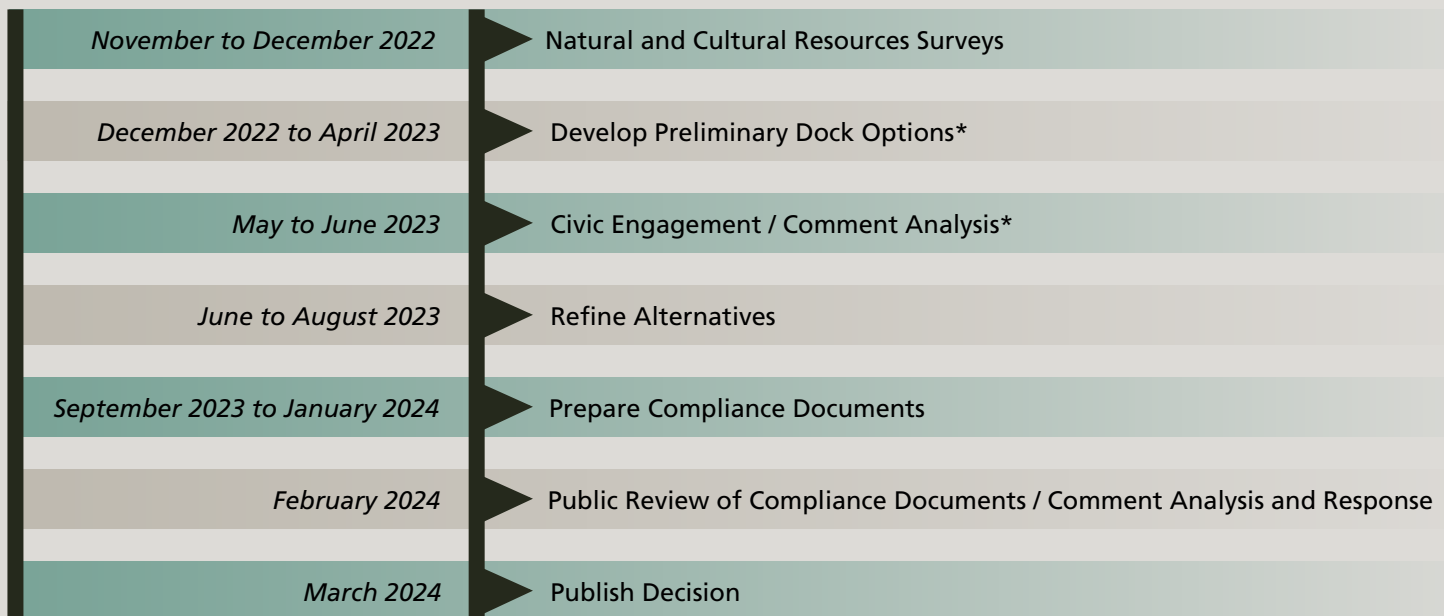
How to Comment

Below are the ways in which you can learn more about the dock replacement and rehabilitation project and/or provide comments. The project has been posted to the NPS Planning, Environment, and Public Comment (PEPC) website and will provide links to project documents, including documents that are available for public review and comment.

Online via: <https://parkplanning.nps.gov/SumterMoultrieDocks>

By mail to: Fort Sumter and Fort Moultrie National Historical Park
Dock Replacement
Attention: Krista Pollett
1214 Middle Street
Sullivan's Island, SC 29482

Steps in the Planning Process



* Indicates the current phase of the project

Liberty Square Dock

The dock at Liberty Square is located in downtown Charleston and provides public ferry access to Fort Sumter. The dock at Liberty Square has fallen into disrepair and requires rehabilitation to maintain safe access to Fort Sumter while reducing annual and corrective maintenance requirements. Work on Liberty Square dock will address deferred maintenance while improving safety, accessibility and providing enhanced recreational use. Liberty Square dock will undergo a condition assessment to identify deficiencies related to ABA Accessibility Standards compliance and Coast Guard regulatory compliance. Potential improvements include reconfiguration of the gangway, replacement of dock railings, extension of a water line to the vessel loading area, and security improvements. Additional details on the rehabilitation of the Liberty Square dock can be found at the following link:

<https://parkplanning.nps.gov/LibertySquareDock>