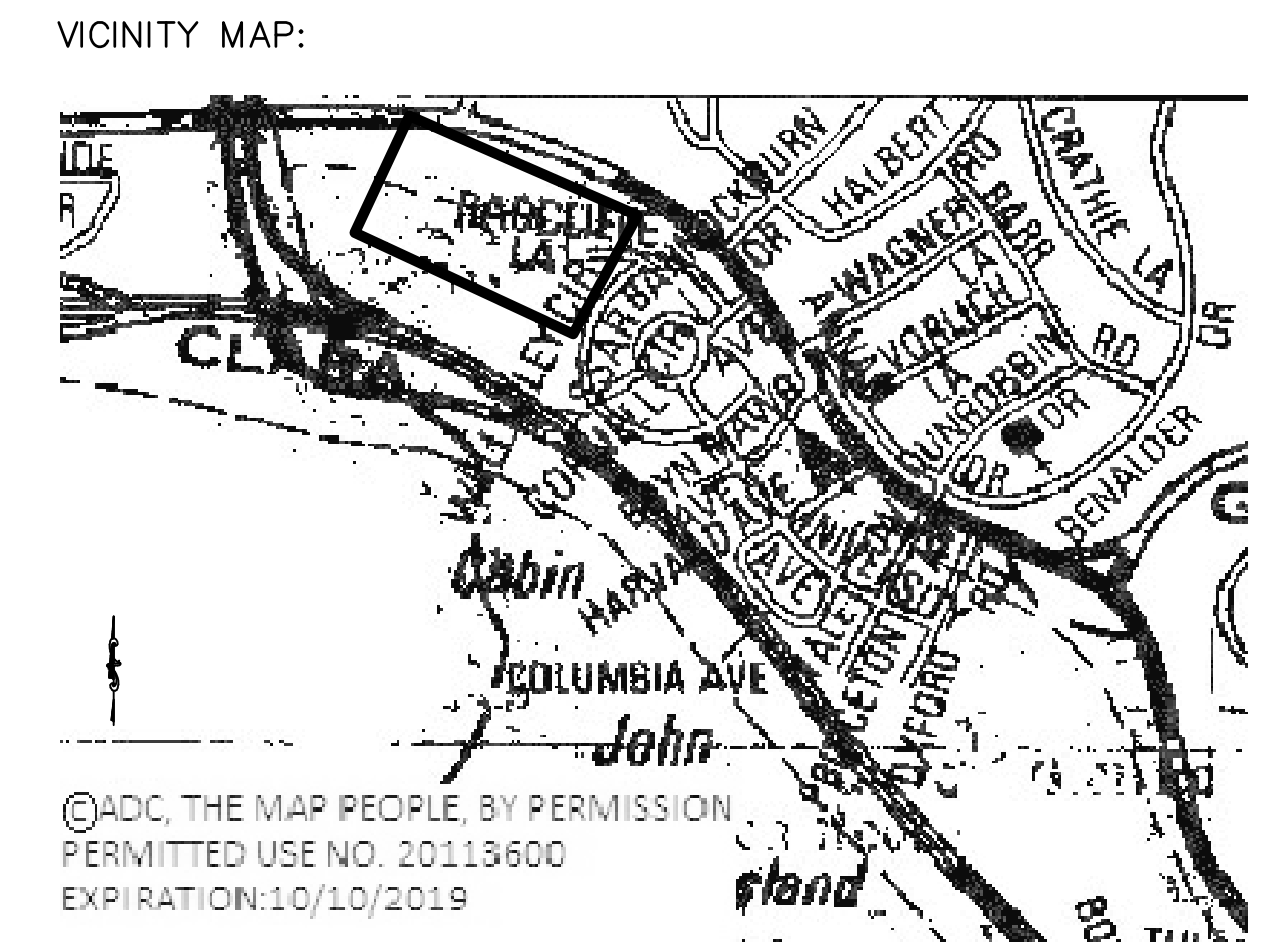


CONTROL POINTS				
TRAV	NORTHING	EASTING	ELEV.	DESCRIPTION
MER100	475552.53694	1271314.45336	151.74	REBAR & CAP
MER101	475644.62429	1270978.69274	150.38	REBAR & CAP
MER102	475504.89617	1271032.33666	138.09	REBAR & CAP
MER103	475392.10469	1271142.22173	108.07	REBAR & CAP
MER104	475404.28454	1271264.41057	130.87	REBAR & CAP
MER150	475504.55610	1271154.43940	119.73	REBAR & CAP
MER151	475490.19687	1271292.79672	142.07	REBAR & CAP
MER152	475680.55785	1271280.25973	123.33	REBAR & CAP



©ADC, THE MAP PEOPLE, BY PERMISSION
 PERMITTED USE NO. 20113600
 EXPIRATION: 10/10/2019

SURVEY NOTES:

SURVEY COMPLETED IN THE FIELD 11/26/2018

THE BASIS FOR COORDINATE AND ELEVATIONS IS THE MARYLAND STATE PLANE HORIZONTAL COORDINATE SYSTEM (NAD83/91) AND NAVD88 VERTICAL DATUM AS PROJECTED BY RTK GPS SURVEY FROM THE FOLLOWING NGS CONTROL STATION:

STATION NAME HV9188
 NORTHING 474274.6323
 EASTING 1272812.9890
 ELEVATION 152.36
 DESCRIPTION BRASS DISC

CONVENTIONAL EDM USED FOR TRAVERSE AND LOCATIONS. NO WETLANDS FLAGS WERE FOUND ON SITE.

THE PROPERTY LINES SHOWN ARE APPROXIMATE ONLY. THE WMATA RIGHT OF WAY LINES SHOWN ARE BASED FROM THE WMATA DEEDS RECORDED IN LIBER 14597 FOLIO 208 PARCEL H & I OF THE MONTGOMERY COUNTY LAND RECORDS. THE ADJOINING PROPERTY LINES SHOWN ARE BASED ON THE DEEDS AND PLATS AS SHOWN ON EACH PARCEL. THE LINES HAVE BEEN PLACED IN REFERENCE TO SEVERAL IRON PIPES FOUND AND SHOWN ON THIS SURVEY.

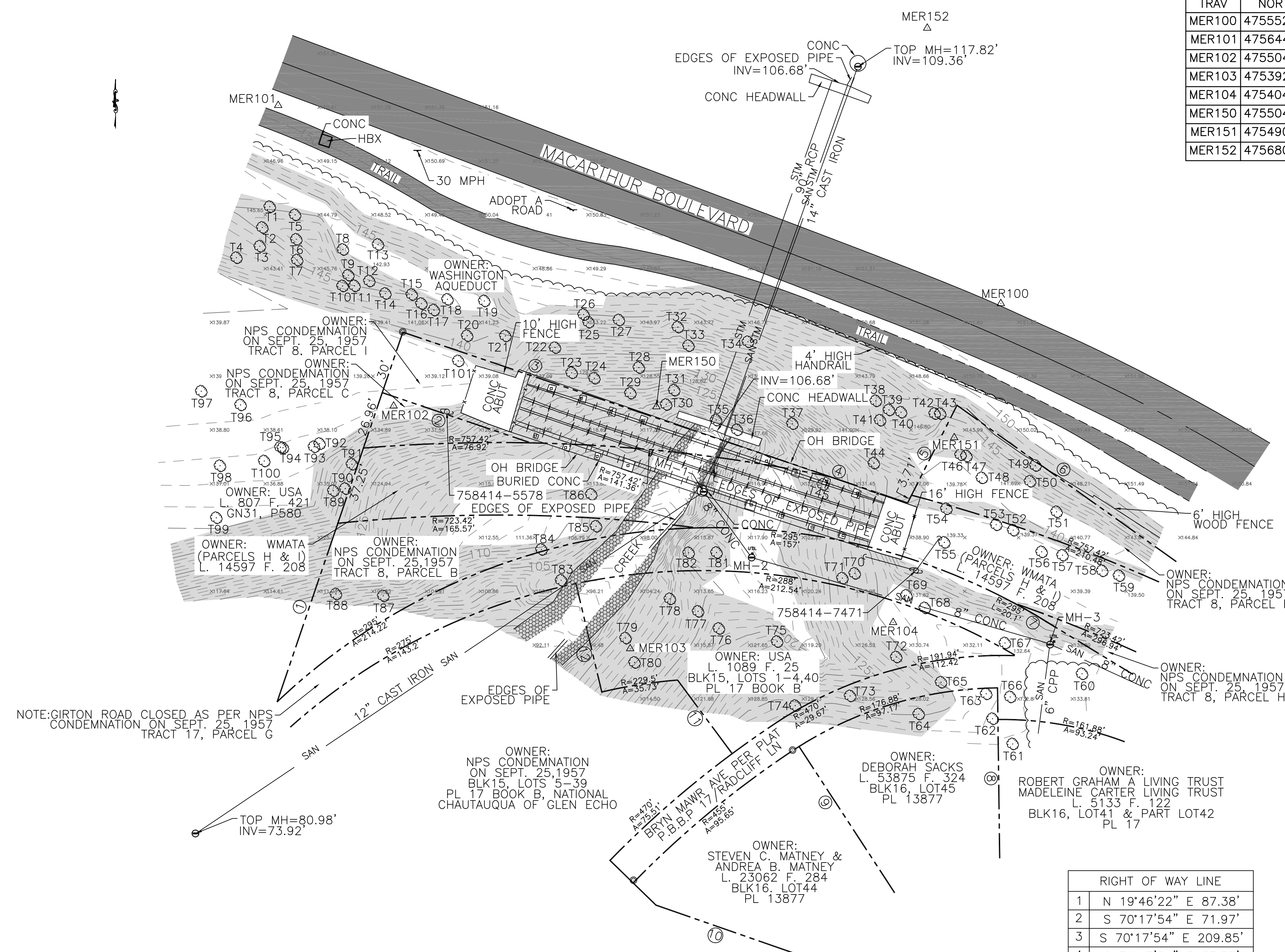
CONTOUR INTERVALS: MINOR-1' MAJOR-5'



GFP A Gannett Fleming/Parsons JOINT VENTURE

I HEREBY CERTIFY THAT THESE DOCUMENTS WERE PREPARED OR APPROVED BY ME, AND THAT I AM A DULY LICENSED PROFESSIONAL LAND SURVEYOR UNDER THE LAWS OF THE STATE OF MARYLAND, LICENSE NO. 21844, EXPIRATION DATE: 5/31/2020

JOSEPH DELFIN, LS



TREES		T50	
T1	18"POPLAR	T51	18"ASH
T2	18"SYCAMORE	T52	24"MAPLE
T3	24"MAPLE	T53	20"MAPLE
T4	14"MAPLE	T54	20"MAPLE
T5	20"POPLAR	T55	16"BEECH
T6	34"SYCAMORE	T56	30"SYCAMORE
T7	12"SYCAMORE	T57	12"MAPLE
T8	30"ASH	T58	16"MAPLE
T9	24"BEECH	T59	18"MAPLE
T10	16"SYCAMORE	T60	18"MAPLE
T11	20"SYCAMORE	T61	13"MAPLE
T12	20"SYCAMORE	T62	16"ASH
T13	12"MAPLE	T63	12"ASH
T14	18"SYCAMORE	T64	38"MAPLE
T15	24"POPLAR	T65	15"MAPLE
T16	20"SYCAMORE	T66	24"MAPLE
T17	24"ASH	T67	15"MAPLE
T18	18"POPLAR	T68	20"MAPLE
T19	20"ASH	T69	16"MAPLE
T20	12"POPLAR	T70	48"MAPLE
T21	48"POPLAR	T71	18"ASH
T22	24"POPLAR	T72	13"MAPLE
T23	20"ASH	T73	60"MAPLE
T24	20"BEECH	T74	16"MAPLE
T25	12"MAPLE	T75	26"POPLAR
T26	16"ASH	T76	17"MAPLE
T27	16"ASH	T77	17"MAPLE
T28	40"POPLAR	T78	28"ASH
T29	20"POPLAR	T79	16"MAPLE
T30	12"POPLAR	T80	13"MAPLE
T31	12"POPLAR	T81	36"SYCAMORE
T32	16"ASH	T82	28"SYCAMORE
T33	20"POPLAR	T83	38"SYCAMORE
T34	20"POPLAR	T84	12"ASH
T35	30"POPLAR	T85	12"ASH
T36	40"POPLAR	T86	26"POPLAR
T37	16"POPLAR	T87	20"MAPLE
T38	30"MAPLE	T88	34"POPLAR
T39	12"ASH	T89	16"POPLAR
T40	40"ASH	T90	60"POPLAR
T41	12"M	T91	55"POPLAR
T42	40"ASH	T92	18"POPLAR
T43	12"ASH	T93	18"POPLAR
T44	16"MAPLE	T94	18"MAPLE
T45	16"MAPLE	T95	18"BEECH
T46	13"ASH	T96	24"POPLAR
T47	14"ASH	T97	24"POPLAR
T48	12"ASH	T98	30"POPLAR
T49	15"ASH	T99	24"POPLAR
		T100	16"MAPLE
		T101	12"POPLAR

RIGHT OF WAY LINE	
1	N 19°46'22" E 87.38'
2	S 70°17'54" E 71.97'
3	S 70°17'54" E 209.85'
4	S 70°17'54" E 37.77'
5	N 27°48'40" E 47.20'
6	S 53°29'46" E 211.68'
7	N 57°38'22" W 280.86'
8	S 01°08'01.1" E 75.00'
9	N 33°33'19.3" W 164.96'
10	S 71°13'07.4" E 89.72'
11	S 36°58'24" E 42.34'
12	S 12°31'02.5" E 51.81'

LEGEND AND ABBREVIATIONS:

- ⊕ GUY
- ⊙ SEWER MANHOLE SIGN
- ⊙ TREE (DIAMETER IN INCHES)
- ⊙ TRAVERSE POINT
- ⊙ PEPCO UTILITY POLE
- ⊙ UTILITY SEWER MARKER
- ⊙ CONC WITH STEEL COLUMN
- ⊙ IRON PIPE 1" OPEN
- ABUT ABUTMENT
- BLK BLOCK
- CONC CONCRETE
- CPP CORRUGATED PLASTIC PIPE
- HBX HANDBOX
- MH MANHOLE
- NPS NATIONAL PARK SERVICE
- OH OVERHEAD
- PL PLAT
- RCP REINFORCED CONC PIPE
- USA UNITED STATES OF AMERICA
- x— CHAIN LINK FENCE
- TREELINE
- HANDRAIL
- MAJOR CONTOUR
- MINOR CONTOUR
- RIGHT OF WAY
- ABANDONED OH RAILROAD TRACK
- SAN SEWER PIPE
- STM STORM PIPE
- ASPHALT
- >25%
- RIPRAP
- MH-1 TOP MH=108.71 INV SW=100.30' INV NE=104.02' INV SE=101.28'
- MH-2 TOP MH=116.63' CANNOT OPEN BROKEN TOP
- MH-3 TOP MH=131.92' INV SW=121.37' INV NW=121.11' INV SE=121.30'

DESIGNED	N/A	N/A	DATE	WASHINGTON METROPOLITAN AREA TRANSIT AUTHORITY DEPARTMENT OF DESIGN AND CONSTRUCTION (DECO) OFFICE OF ENGINEERING AND ARCHITECTURE (ENGA)		A/E SERVICES FOR: TOPOGRAPHIC SURVEYS FOR TWO (2) PROPERTIES LOCATED IN MONTGOMERY COUNTY, MD CABIN JOHN CREEK TRESTLE TOPOGRAPHIC SURVEY	
DRAWN	MERCADO	12/28/18	DATE	12/31/2018 DATE D. FALKEN WMATA PROJECT MANAGER		12/31/2018 DATE G. SPILLER GFP DEPUTY PROGRAM MANAGER	
CHECKED	JRD	12/31/18	DATE	M NO.		CONTRACT NO. FTA-19-FQ15191	
				SCALE 1" = 30'		DRAWING NO. TSFA-017	
				SHEET NO. 1 of 1			