

Public Meeting

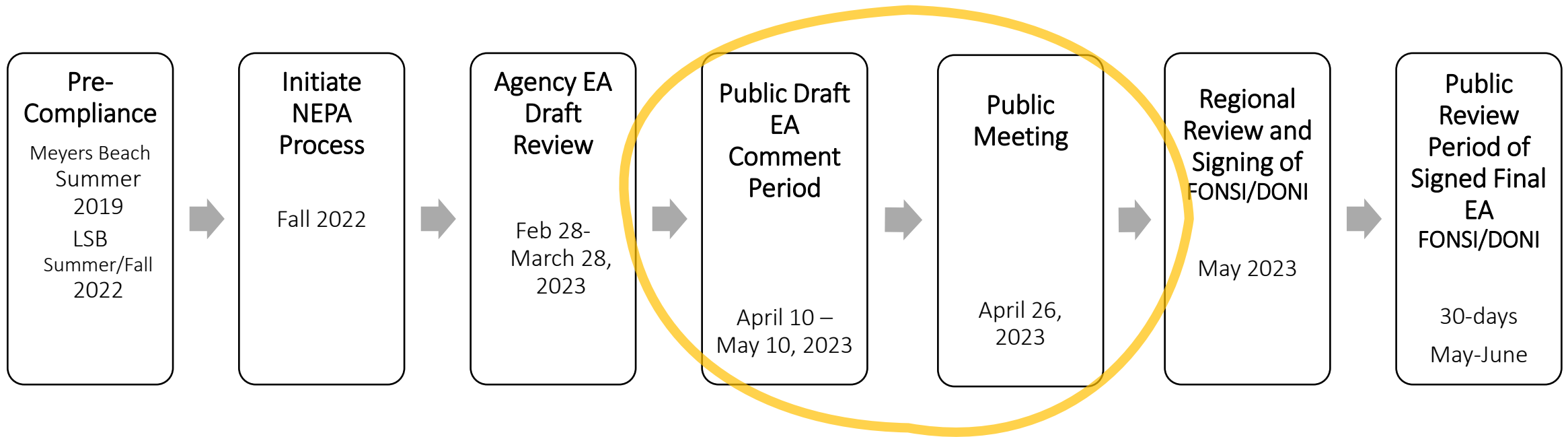
Create Accessible Ramp at Meyers Beach and Trail Network at Little Sand Bay

Apostle Islands (Wenabozho ominisan) National Lakeshore

Julie Van Stappen – Natural & Cultural Resource Stewardship Director

April 26, 2023

Purpose of the Meeting – NEPA Process



Goals

Increase Accessibility – create accessible recreational opportunities on the mainland

Increase Tribal connections - collaborative trail exhibits, joint resource monitoring and educational opportunities

Mitigate Human Impacts - focusing use onto designated trails

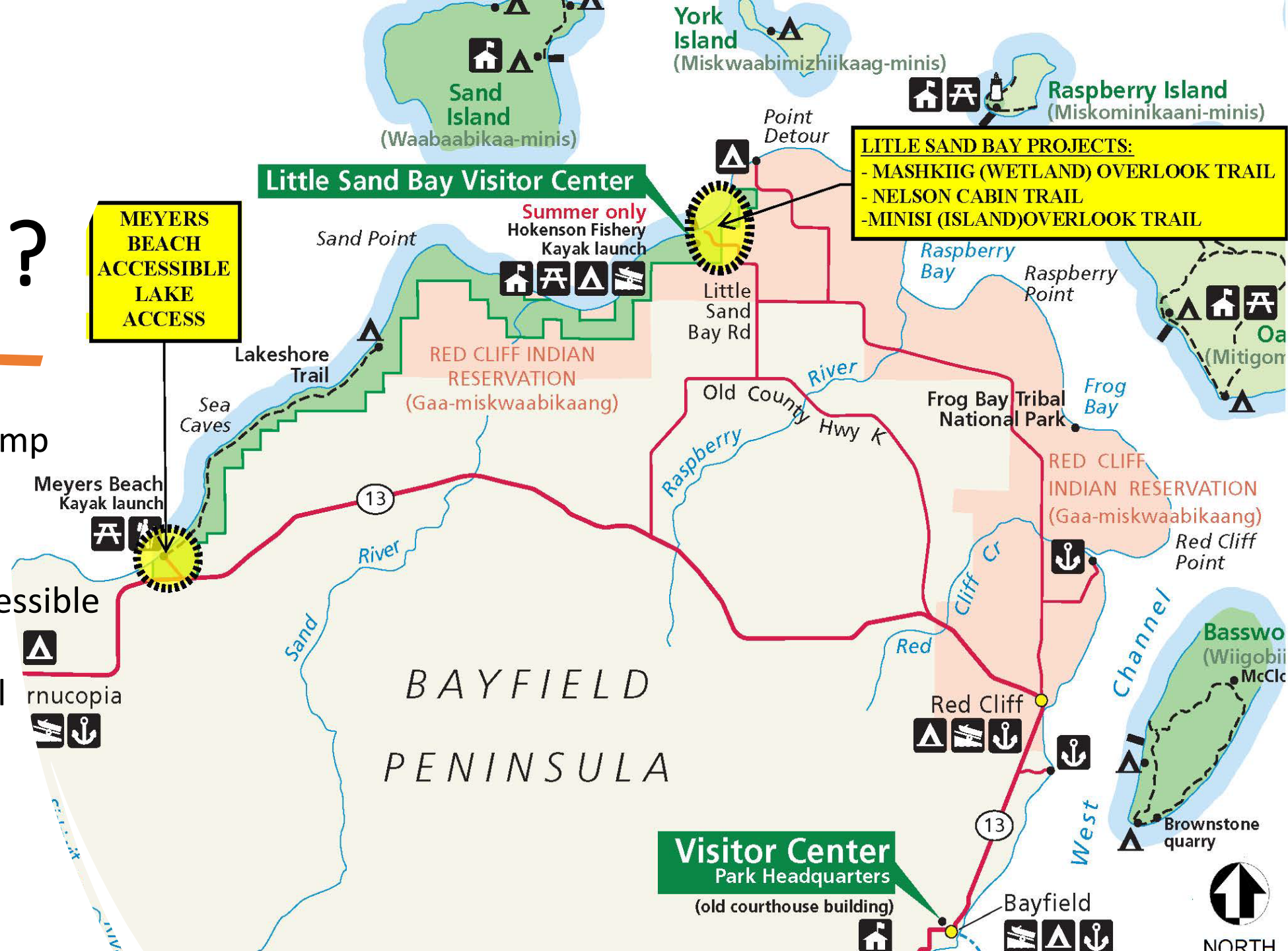
Increase educational opportunities - for youth & area visitors/residents

Increase safety - routing visitor traffic from busy roads to trails

Enhance health/fitness opportunities

What's Proposed?

- **Meyers Beach**
 - ABA accessible ramp
- **Little Sand Bay**
 - Maakwa ABA accessible boardwalk
 - Nelson Cabin Trail
 - Minisi Trail

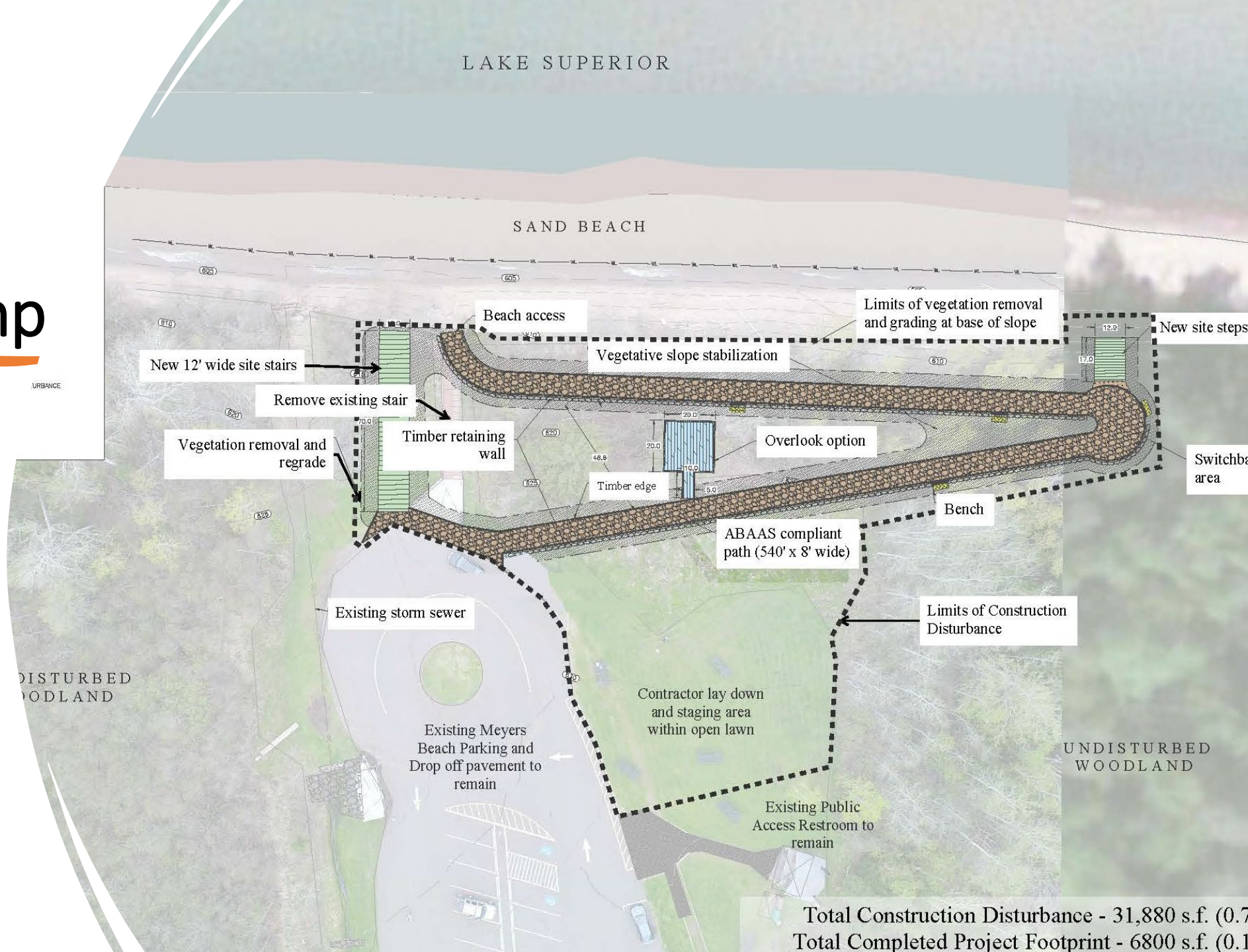


Meyers Beach

- Western end of Mainland Unit
- Access to beach is limited to a steep stairway
- Heavily used area
- Kayak launching location to visit the Mainland sea caves
- Friends of Apostle Islands – *Access for All* campaign



Meyers Beach Proposed Ramp



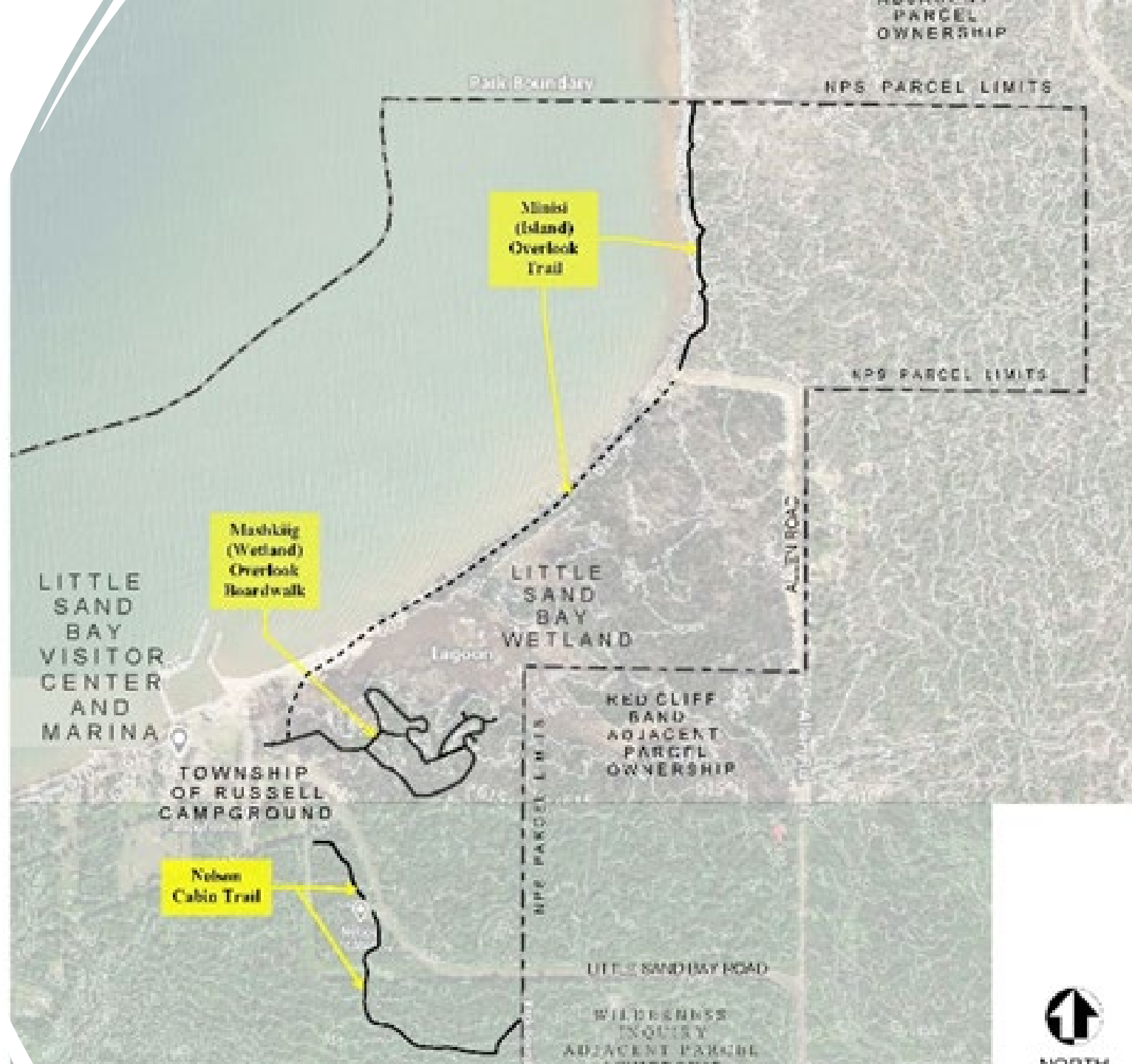
Little Sand Bay

- Heavily used area on the Eastern side of the park's Mainland Unit
- NPS inholding within the Red Cliff Reservation
- NPS visitor center, outdoor exhibits, marina, historic fishery, kayak launch
- Town of Russell recreational area, boat ramp, and campground
- No trails
- Limited options for people of all abilities



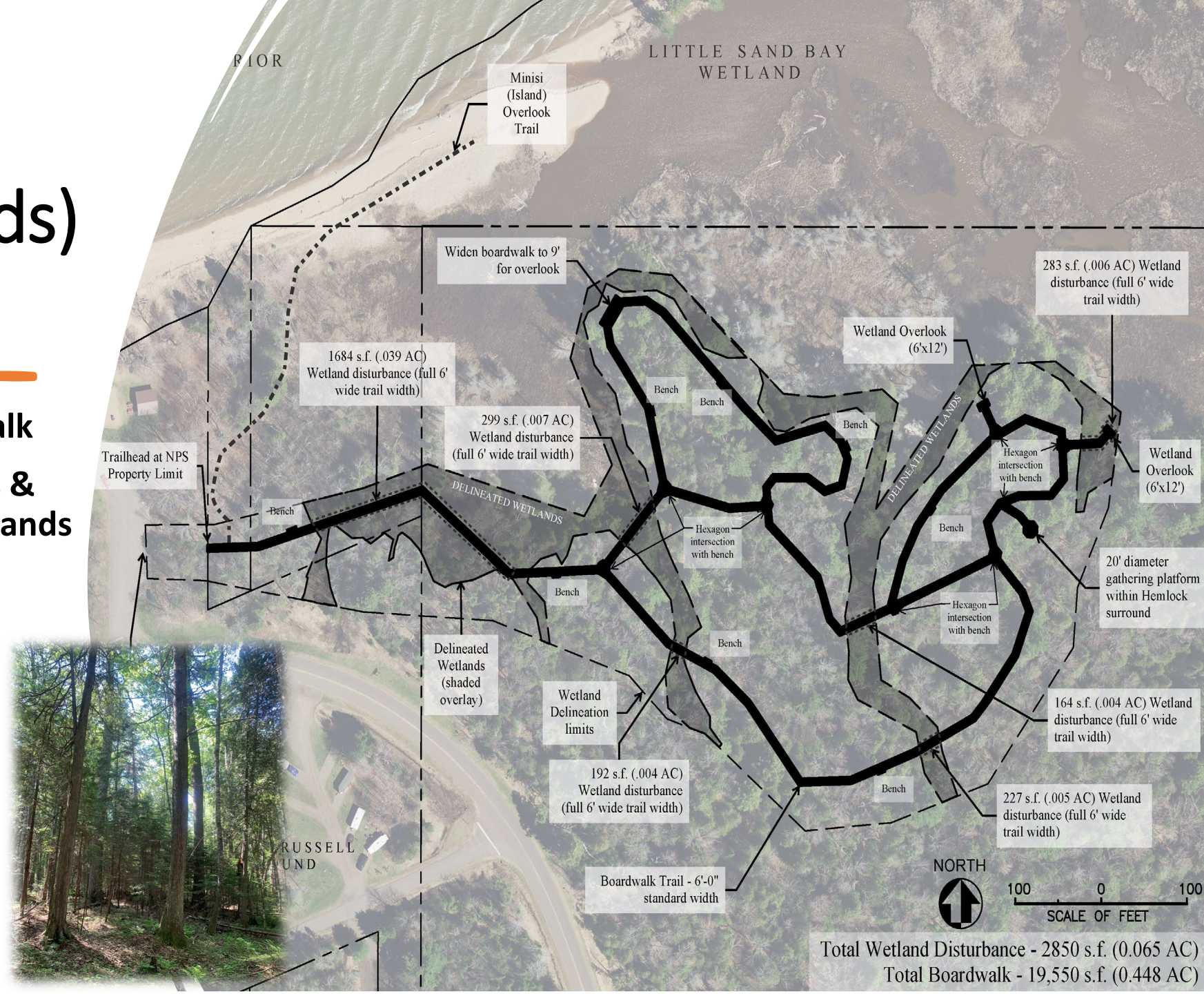
Proposed Little Sand Bay Trail Network

- Maakwa (wetland) Boardwalk
- Nelson Cabin Trail
- Minisi (island outlook) Trail



Maakwa (wetlands) Boardwalk

- ABA accessible ½ mile boardwalk
- Provides views of the wetlands & focuses visitor use off of the wetlands
- Bi-lingual (Ojibwemowin/English) signs & exhibits
- Gathering area for schools and other groups



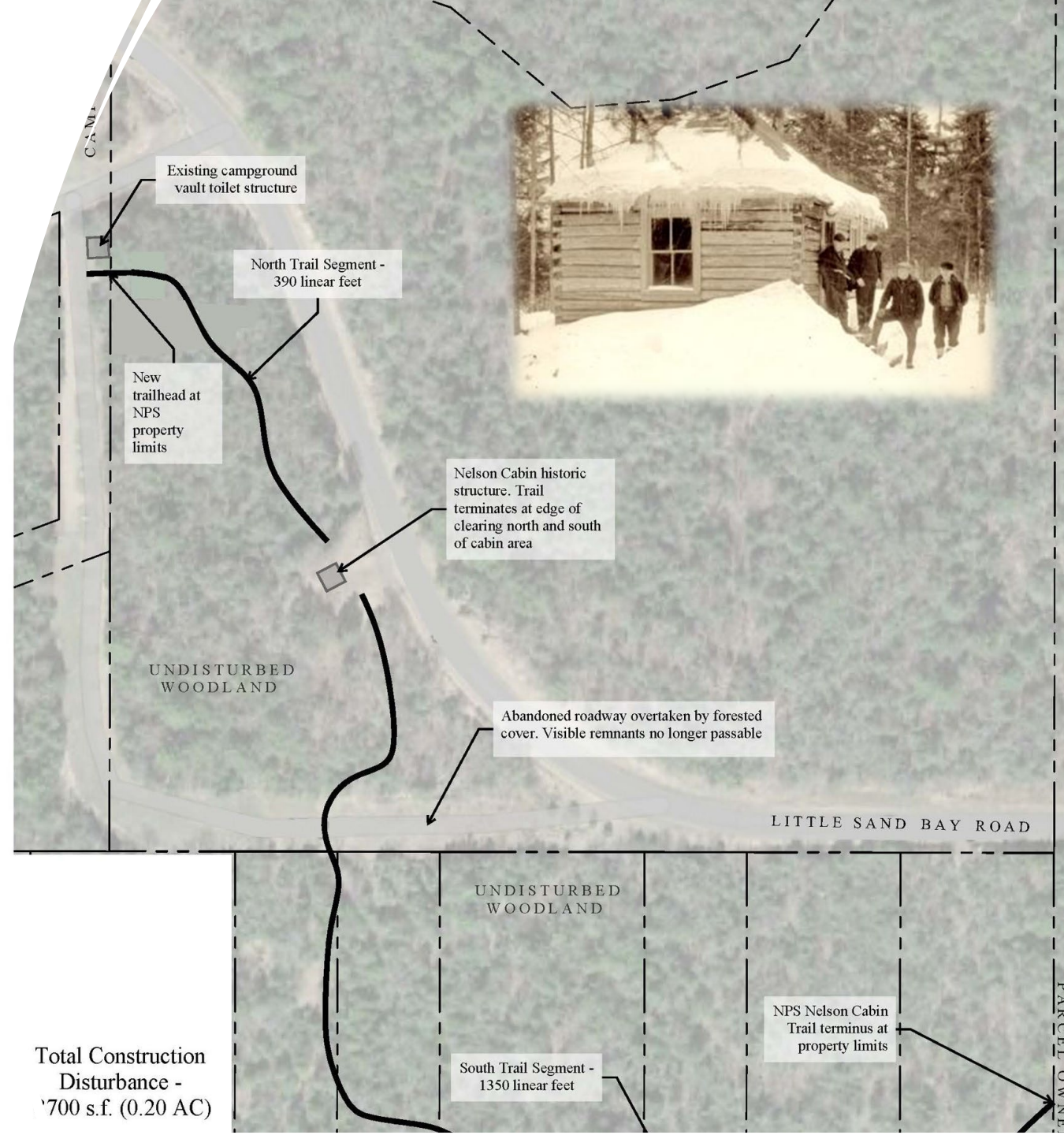


Boardwalk Design

- Minimizes ground disturbance
 - No pilings
 - Sits on 18" x 18" plates
- 100 year life-span
- 6' width with toe-rails

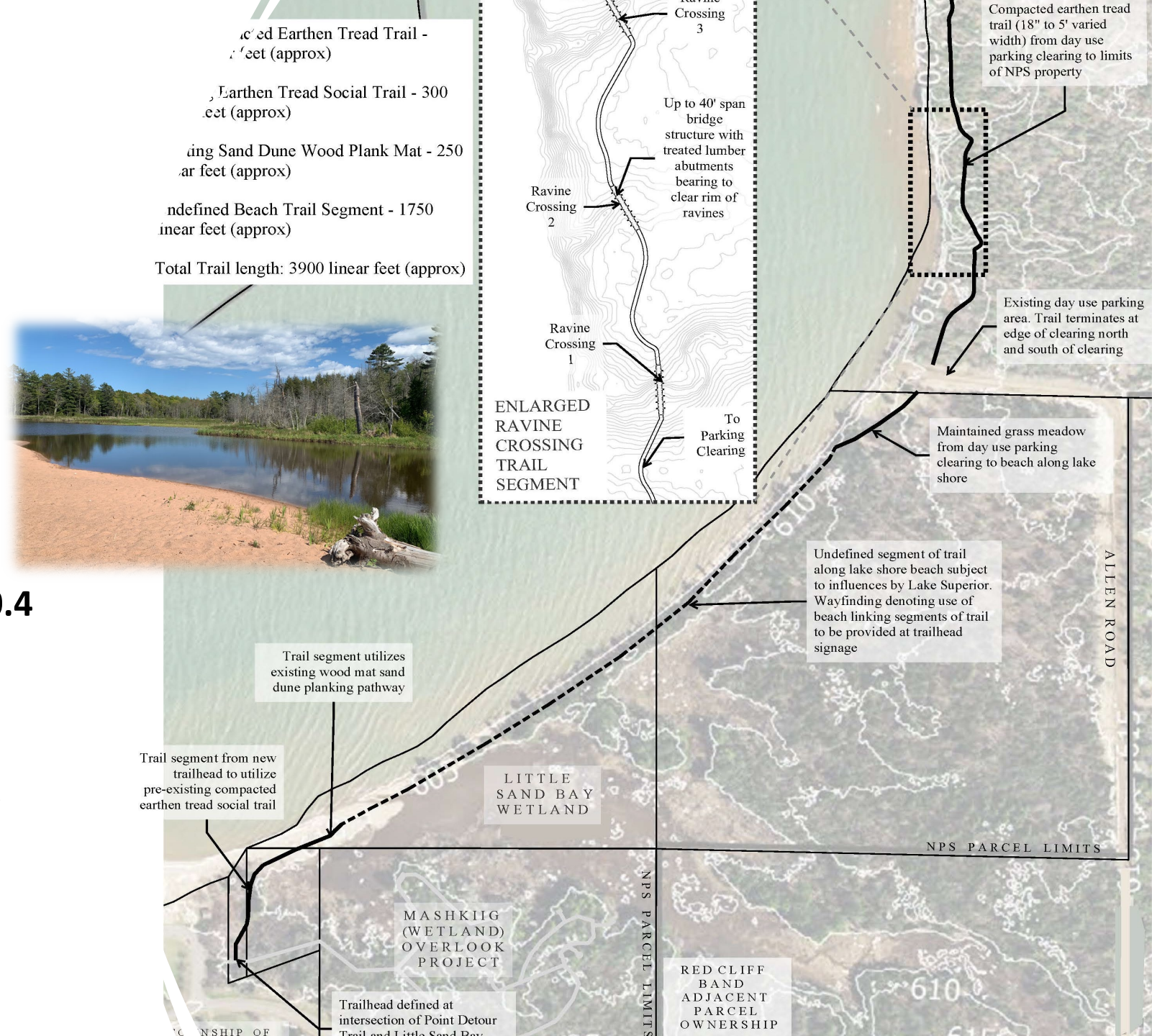
Nelson Cabin Trail

- Increase safety/provide trail opportunity
- Trail access from Little Sand Bay campground to the historic Nelson Cabin
- Partnership opportunity with Wilderness Inquiry - extend trail to joint property line with donor funding



Minisi (Island overlook) Trail

- Trailhead at boardwalk entry in Town of Russell parking area
- Unimproved route follows beach from Little Sand Bay to Allen Road (0.4 miles)
- Minimally improved 0.3 mile walking trail from Allen Rd. to Red Cliff boundary ending in an overlook w/boundary signs
- Nice island views



Questions, Comments?

Ways to Comment:

Now: During this public meeting

By Mail: Apostle Islands National Lakeshore, Attn: Julie Van Stappen, April 2023 EA
Comments, P.O. Box 770, Bayfield, Wisconsin 54891 (must be postmarked by 05/10/23)

Online: <https://parkplanning.nps.gov/LsbMbEA>

A large yellow triangle is positioned in the bottom right corner of the slide, pointing towards the top right.