



ROCK CREEK PARK GOLF COURSE REHABILITATION

WELCOME

to the

Section 106 Consulting Parties Meeting

March 2, 2023



WELCOME!

- Welcome
- Introductions
- Presentation
 - Introduction
 - Site History
 - Existing Conditions
 - Proposed Undertaking
 - Assessment of Effects
 - Next Steps & How to Comment
- Question and Answer Session



INTRODUCTION

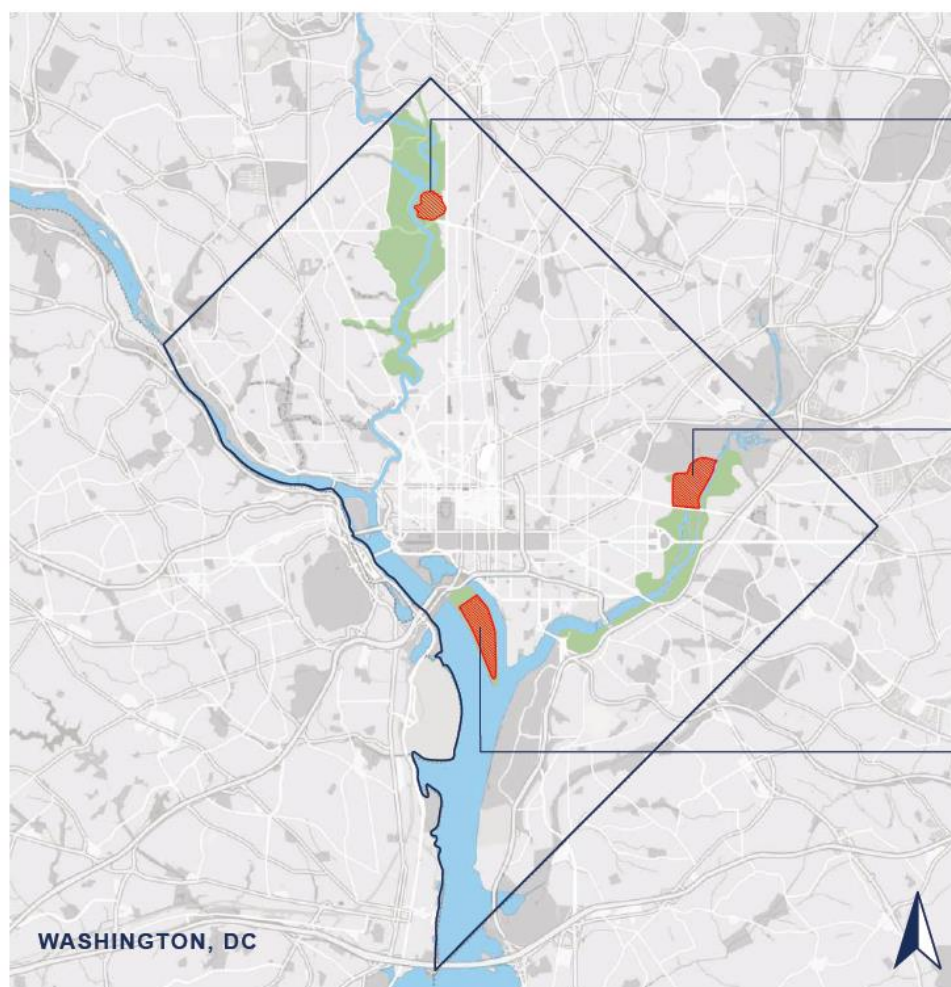


NATIONAL LINKS TRUST + NPS

- National Links Trust (NLT), a 501(c)(3) non-profit, signed a 50-year lease with the National Park Service (NPS) to operate three historic public golf courses in Washington, DC: East Potomac, Langston, and Rock Creek.
- Devoted to the improvement of recreational opportunities while providing broader benefits to the community.
- Committed to implementing a course of action that honors the past and ensures a bright future for Washington DC's three golf facilities.
- Dedicated to providing affordable, accessible, and engaging golf at well-maintained and environmentally sustainable green spaces that are to the benefit of everyone, golfers and non-golfers alike.



THE DISTRICT'S THREE HISTORIC PUBLIC GOLF COURSES



1 ROCK CREEK PARK GOLF COURSE ROCK CREEK PARK



President Warren G. Harding putting at Rock Creek, 1923.

2 LANGSTON GOLF COURSE ANACOSTIA PARK



Golf Pro Al Green with local youth at Langston, 1979

3 EAST POTOMAC GOLF COURSE EAST POTOMAC PARK



Three women holding golf clubs East Potomac, 1923

0 2mi 4mi 6mi

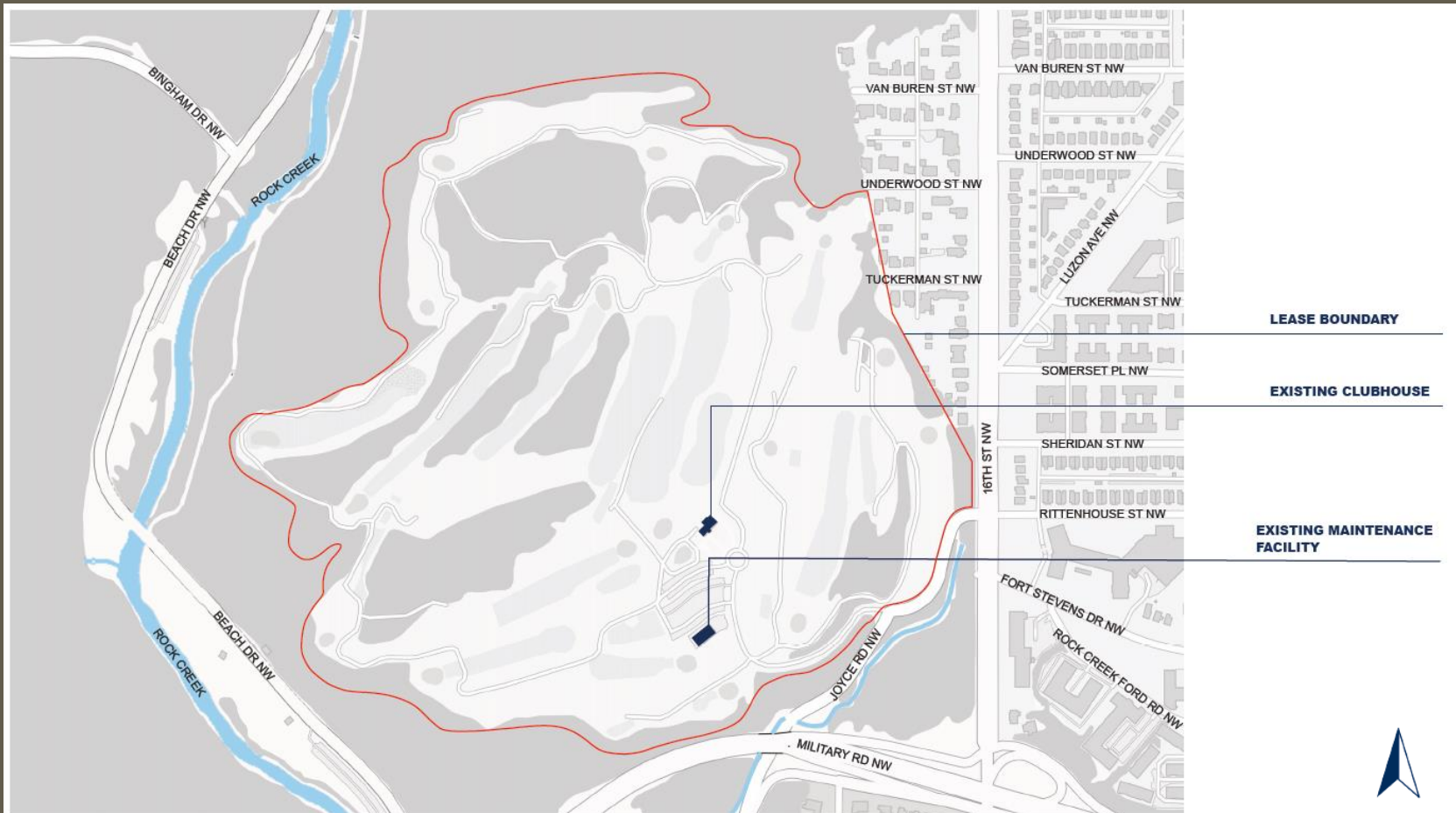
Rock Creek Park

Golf Course Rehabilitation

National Park Service
US Department of the Interior



ROCK CREEK PARK GOLF COURSE





PURPOSE OF THE PROJECT

- Address deferred maintenance
- Increase playability
- Broaden course appeal to local community
- Achieve financial stability





NEED FOR THE PROJECT (1/2)

- The historic parkland-style course designed by William Flynn is currently not apparent.
- The current 18-hole course does not lend itself to players of varying skill levels.
- The lack of a driving range impacts the usership and financial viability of the golf course.
- The limited facilities of the existing clubhouse do not adequately support golf course operations, golfers, and non-golfers.



NEED FOR THE PROJECT (2/2)

- The dense overgrowth of the adjacent woodland and invasive vegetation encroaches on and narrows the existing fairways, resulting in decreased playability.
- Turfgrass is deteriorated due to traffic patterns, poor cart paths, poor drainage, poor irrigation, tree root competition, and shade from trees.
- Trails and paths used by both pedestrians and golf carts are ill-defined and infringe on views and playing areas.
- The maintenance facility is in a highly visible location and does not meet the needs of golf course operations.



PROJECT GOALS

- Historic Preservation
- Revival of Exemplary Golf Course Architecture
- Environmental Sustainability
- Growth in Golf Participation via Non-Traditional Golf Options
- Expanded Non-Golf Community Infrastructure and Programming



SITE HISTORY AND HISTORIC SIGNIFICANCE



SITE HISTORY

- 8000 BC: Indigenous people began camping along Rock Creek
- 1680s AD: Europeans and Africans (enslaved and free) arrived in this area
- 1740: Families were living on farms within present day Rock Creek Park
- 1864: Battle of Fort Stevens
- 1906-07: DC Commissioners announce plans to establish the city's first public golf course at Rock Creek Park.

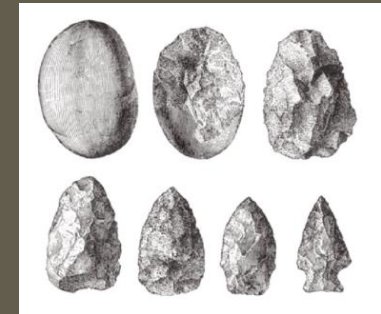


Illustration of Stone Working at Piney Branch Quarry (Holmes 1987)



Farmhouse on site that was used as the golf clubhouse from 1923-1964.



SITE HISTORY

- 1923: Completion of William Flynn 9-hole golf course
- 1927: An additional 9 holes added to create an 18-hole golf course and Golf Course Access Road constructed
- 1957-58: Military Road reconstructed into a four-lane freeway
- 1963: NPS receives necessary funds to build new clubhouse constructed in Mission 66 style
- 1970-75: Back nine deterioration requires managers to shorten holes



View from 11th green to the 11th tee showing erosion in front of tee, 1957.

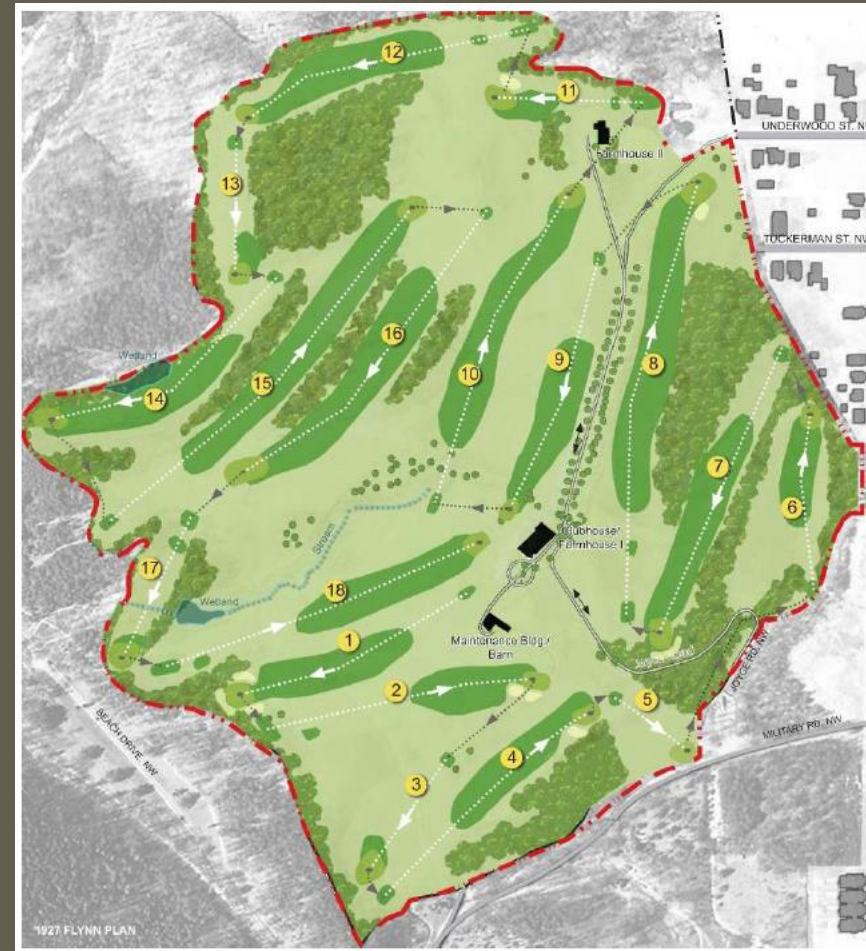


Existing clubhouse under construction, 1964.



SITE HISTORY: FLYNN PLAN

- Flynn is most recognized for his parkland style designs, which are laid out across rolling terrain and typically incorporate mature trees. The steep topography and wooded environs of Rock Creek lent itself to the dramatic parkland-style for which Flynn was known.
- The course's continued use for almost 100 years is a testament to Flynn's desire to build courses that would stand the test of time.



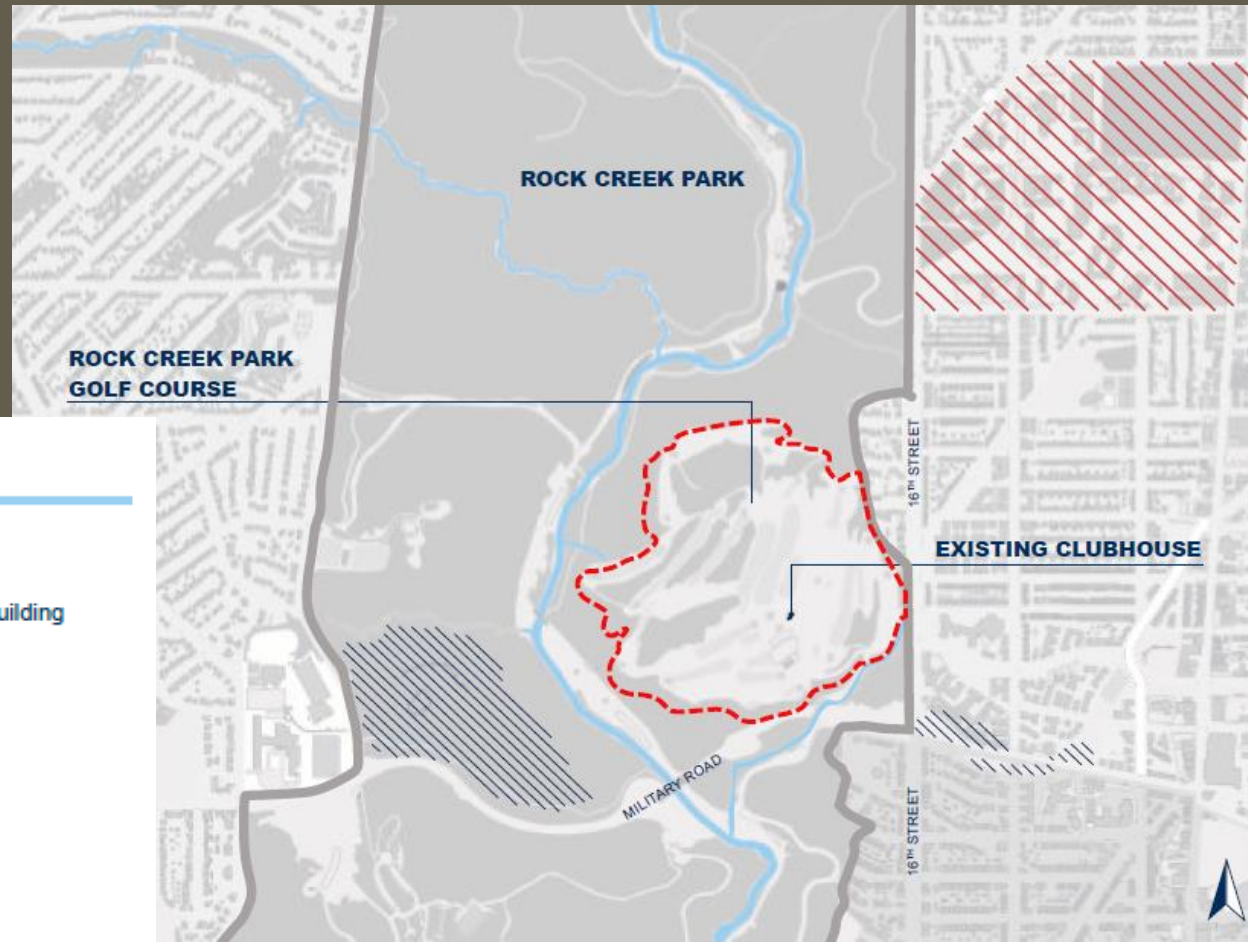


HISTORIC SIGNIFICANCE







- Listed in the National Register of Historic Places as a contributing resource to the Rock Creek Park Historic District
- Criterion A (Events)
 - Urban recreation and development of public golf courses in the District
- Criterion C (Architecture)
 - Designed by golf architect William S. Flynn during the Golden Age of Golf (early 1900s to the Great Depression)
- Periods of Significance
 - 1921-1927 (original design by Flynn)
 - 1963-1964 (construction of the new clubhouse as part of Mission 66)



ROCK CREEK PARK GOLF COURSE AREA OF POTENTIAL EFFECT



KEY

-  Area of Potential Effect (APE)
-  Rock Creek Park Historic District Contributing Building
-  Rock Creek and Other Tributaries
-  Rock Creek Park Historic District Boundary
-  Fort Circle Parks Historic District
-  Former Walter Reed Army Medical Center



EXISTING CONDITIONS

Rock Creek Park

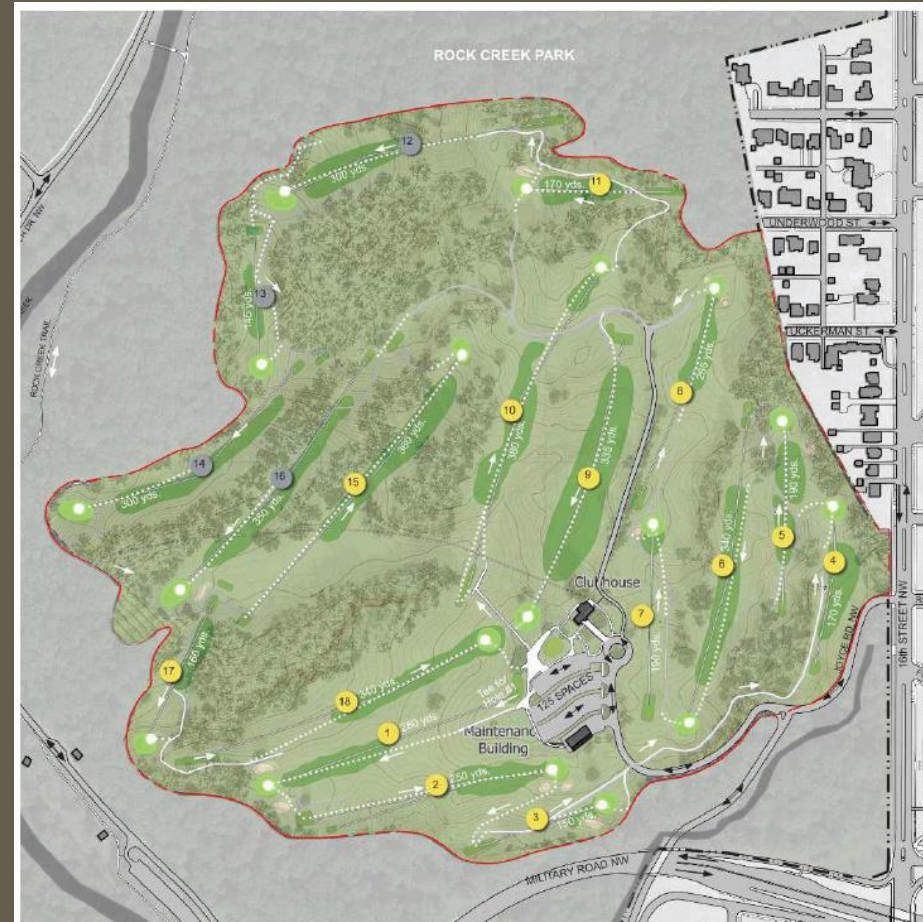
Golf Course Rehabilitation

National Park Service
US Department of the Interior



EXISTING SITE PLAN

- Located on east side of Rock Creek Park at the intersection of 16th and Military Road NW on approximately 100 acres.
- 14-hole course (four holes of the original back 9 are currently not in play) with a counterclockwise progression of play centered on the clubhouse.
- The front 9 holes are characterized by visually open spaces, gentle slopes, and wide fairways.
- The back 5 holes are characterized by narrow fairways, dense forests, and steep slopes.
- The course currently suffers from deferred maintenance that has impacted golf course facilities as well as the playability of the course.



Rock Creek Park

Golf Course Rehabilitation

National Park Service
US Department of the Interior



EXISTING SITE PLAN

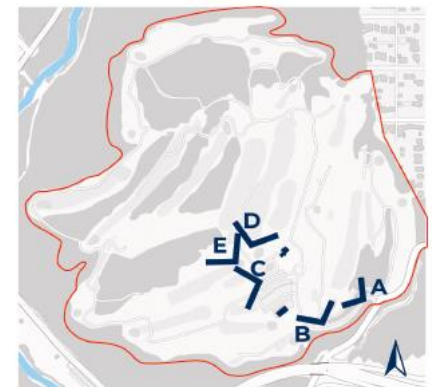
LEGEND

- 2022 Lease Boundary
- Building
- ▬ Road
- Pedestrian Path
- On Grade Golf Course Route
- ↔ Directional Vehicular Circulation
- Directional Pedestrian Circulation
- 1 Active Holes
- 12 Holes Not in Service Due to Deteriorating Circumstances





EXISTING CONDITIONS





EXISTING CONDITIONS

F



G



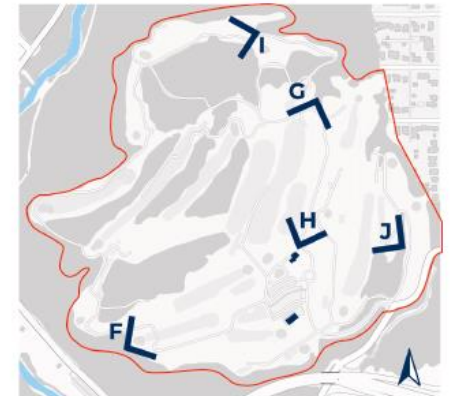
H



I



J





TODAY'S CLUBHOUSE

- Is a contributing feature to the Rock Creek Park Historic District
- Built in 1964 in the NPS Mission 66 style
- Does not adequately support golf course operations
- Not accessible to persons with disabilities
- Not a good candidate for reuse due to its small size, lack of accessible facilities and routes, and extensive use of masonry interior partitions that make any floor plan changes costly and difficult





PROPOSED UNDERTAKING



GOLF COURSE REHABILITATION PROGRAM

- 9-hole regulation course
- 9-hole par 3 course
- Short game practice area
- 50 bay driving range
- Practice putting green
- Golf academy
- Restaurant & bar with indoor and outdoor seating
- Flexible meeting/event space
- Pro shop
- Accessibility improvements
- Bike parking
- Community programming space
- Maintenance building and yard
- Park visitor parking
- Hiking trails
- Irrigation pond/pump house
- First Tee DC headquarters



Rock Creek Park

Golf Course Rehabilitation

National Park Service
US Department of the Interior



LANDSCAPE PLAN



LEGEND

- ① Proposed Clubhouse
- ② Golf Cart Barn
- ③ Proposed Maintenance Building
- ④ Community Pavilion with Terraced Seating
- ⑤ 9 Hole Regulation Golf Course
- ⑥ 9 Hole Par 3 Golf Course
- ⑦ Practice Green
- ⑧ Driving Range
- ⑨ Pollinator Meadow
- ⑩ Irrigation Pond
- ⑪ Rock Creek Golf Course Nature Trail
- ⑫ Riparian Vegetative Buffer
- ⑬ Reestablishment of Historic Farm Road Cedar Alley
- ⑭ Proposed Rock Creek Park Golf Course Welcome Signage
- Proposed accessible paths, subject to further study





ENTRY SEQUENCE



EXISTING VIEWS



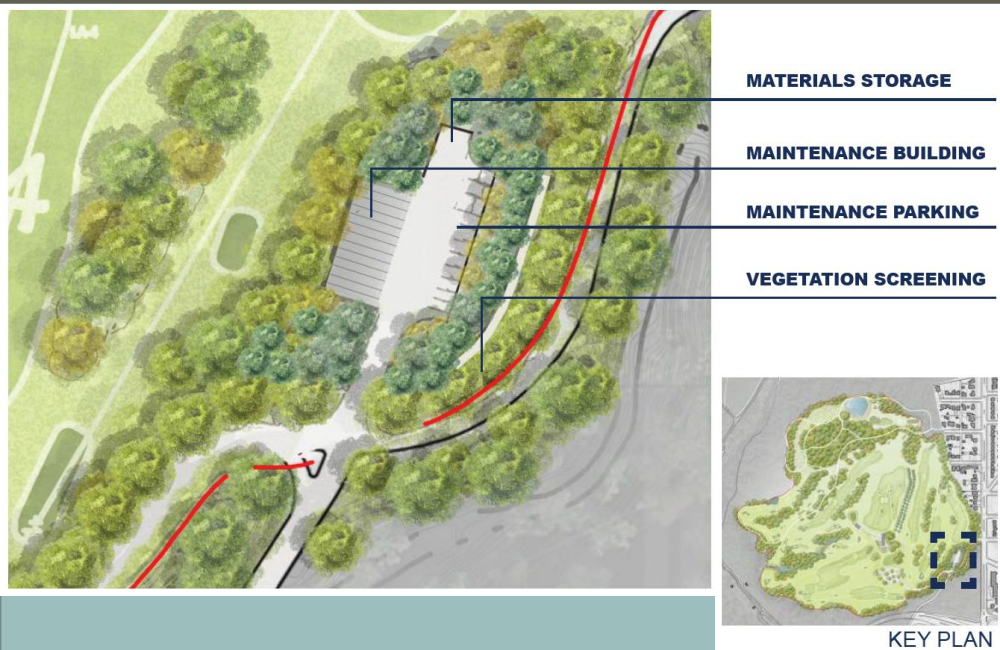


ECOLOGICAL TRAIL



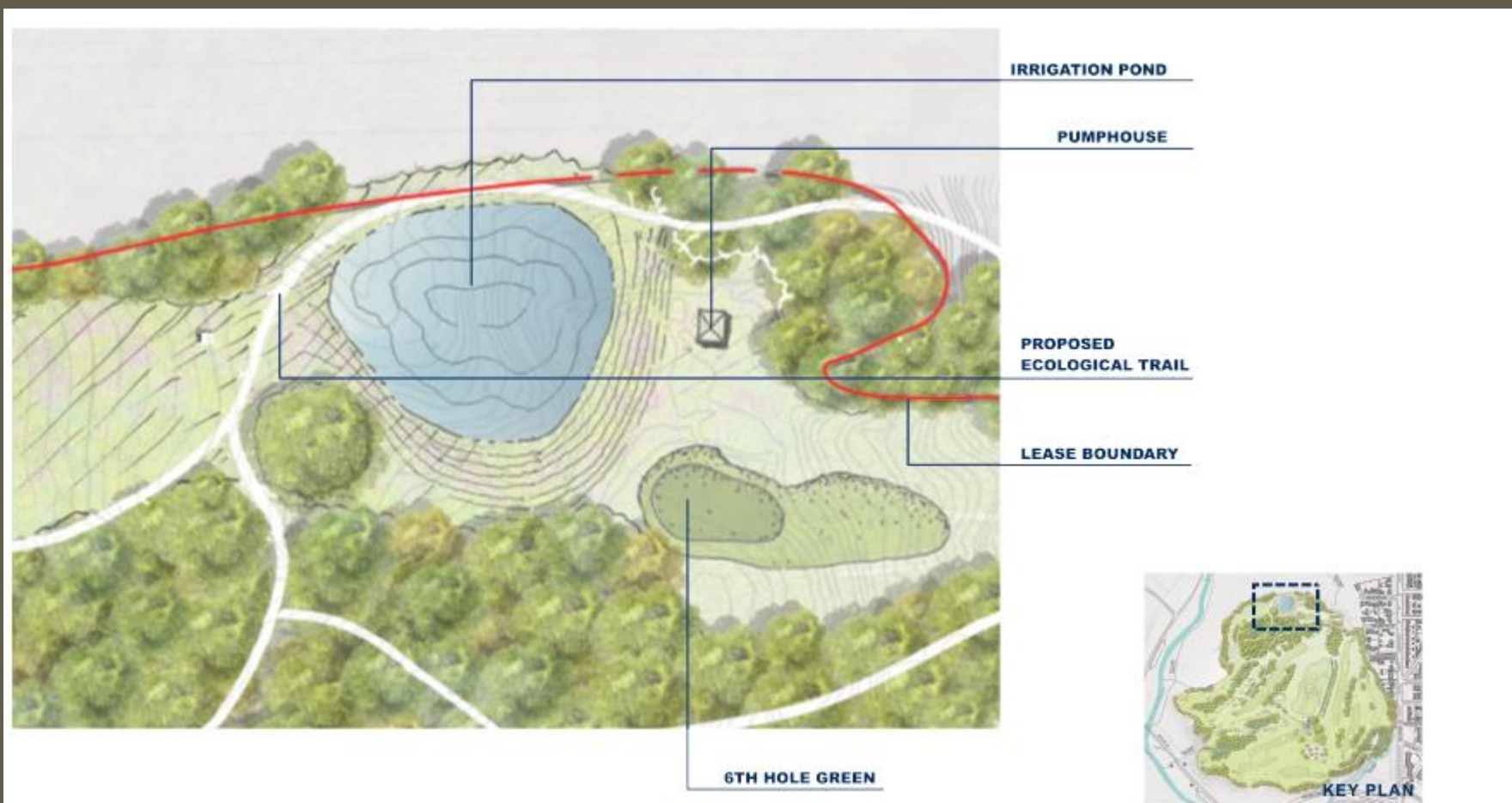


MAINTENANCE BUILDING & PAVILION



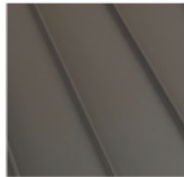
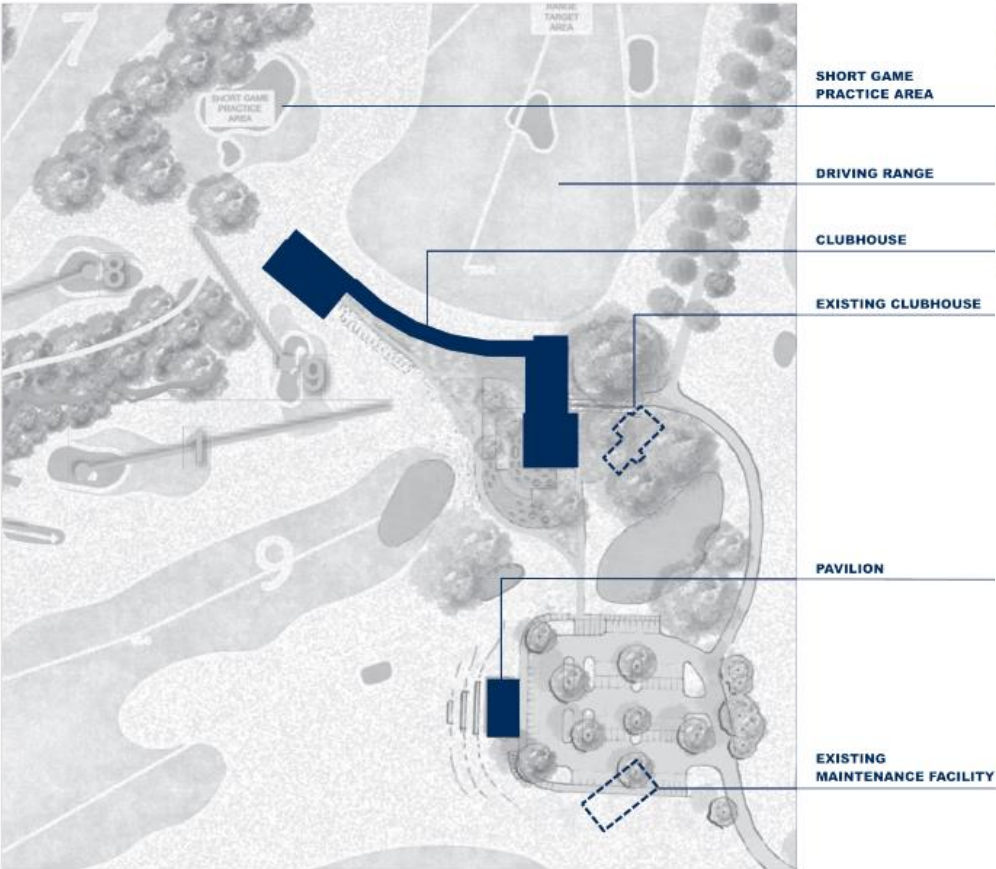


IRRIGATION POND



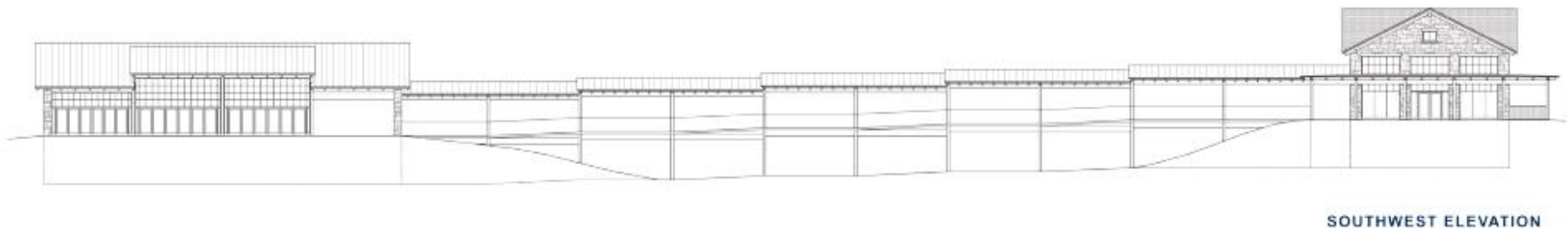


CLUBHOUSE





CLUBHOUSE





ASSESSMENT OF EFFECTS



CRITERIA OF ADVERSE EFFECT

An adverse effect is found when an undertaking may alter, directly or indirectly, any of the characteristics of a historic property that qualify the property for inclusion in the National Register in a manner that would diminish the integrity of the property's location, design, setting, materials, workmanship, feeling, or association.



EXAMPLES OF ADVERSE EFFECTS

1. Physical destruction or damage;
2. Alterations that are inconsistent with the Secretary's Standards;
3. Relocation of a property;
4. Change of use or physical features of a property's setting;
5. Visual, atmospheric, or audible intrusions;
6. Neglect resulting in deterioration; or
7. Transfer, lease, or sale of a property out of Federal ownership or control without adequate protections.



POTENTIAL ADVERSE EFFECTS

Rock Creek Golf Course

- Modifications to the historic routing from the construction of the 9-hole regulation course and par-3 course.
- Changes to the overall design of William Flynn's 18-hole course from the construction of the 9-hole regulation course, par-3 course, and other features
- Demolition of the Mission 66 clubhouse
- Modifications to historic views from the construction of the driving range structure

Rock Creek Park Historic District

- Demolition of the Mission 66 clubhouse



NEXT STEPS



PLANNING PROCESS

Milestone	Targeted Schedule
Consulting Parties Meeting #1	Early 2023
Environmental Assessment/ Assessment of Effect	Spring 2023
Public Review	Summer 2023
Decision/Agreement Document	Autumn 2023

We are
here!



HOW TO COMMENT

Formal comments can be submitted two ways:

1. Submit comments electronically at:
<https://parkplanning.nps.gov/rockcreekgolfplan>

-- or --

2. Mail or hand-deliver written comments to park headquarters:

Superintendent
RE: Golf Course Rehab
Rock Creek Park
3545 Williamsburg Ln NW
Washington, DC 20008

Please provide
comments by
March 16, 2023



THANK YOU!

We will now answer questions about the project and planning and compliance processes.

Please submit your questions via the [chat](#) or [hand-raise](#) buttons.