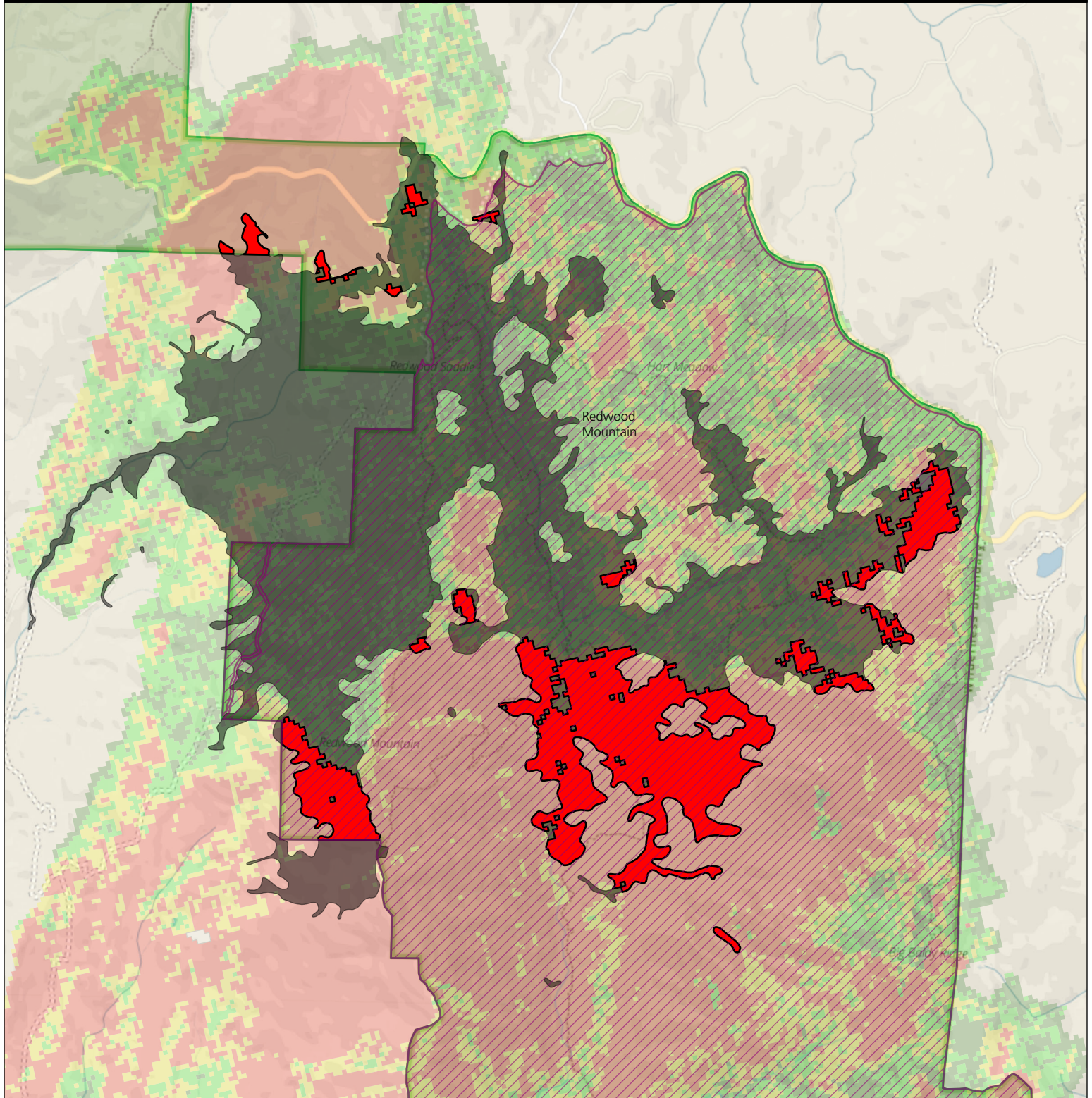


# Proposed Sequoia Replanting Areas

Redwood Mountain

Sequoia and Kings Canyon National Parks  
National Park Service  
U.S. Department of the Interior

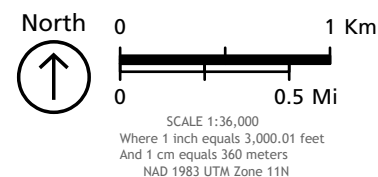


- Sequoia Replanting Area
- Giant Sequoia Groves
- Park Boundary
- Wilderness**
- Designated Wilderness

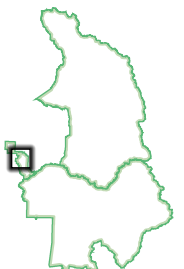
- Fire Severity (cbi4)**
- No Change Detected (CBI: 0-0.1)
  - Low Severity (CBI: 0.1-1.25)
  - Moderate Severity (CBI: 1.25-2.25)
  - High Severity (CBI: 2.25-3)
  - Masked Areas (clouds, smoke, etc)

Produced by: NPS, SEKI GIS; 2/7/2023

This map shows areas where giant sequoia groves in Sequoia and Kings Canyon National Parks were severely impacted by wildfire. These areas are under consideration for potential replanting.



MAP FRAME EXTENT

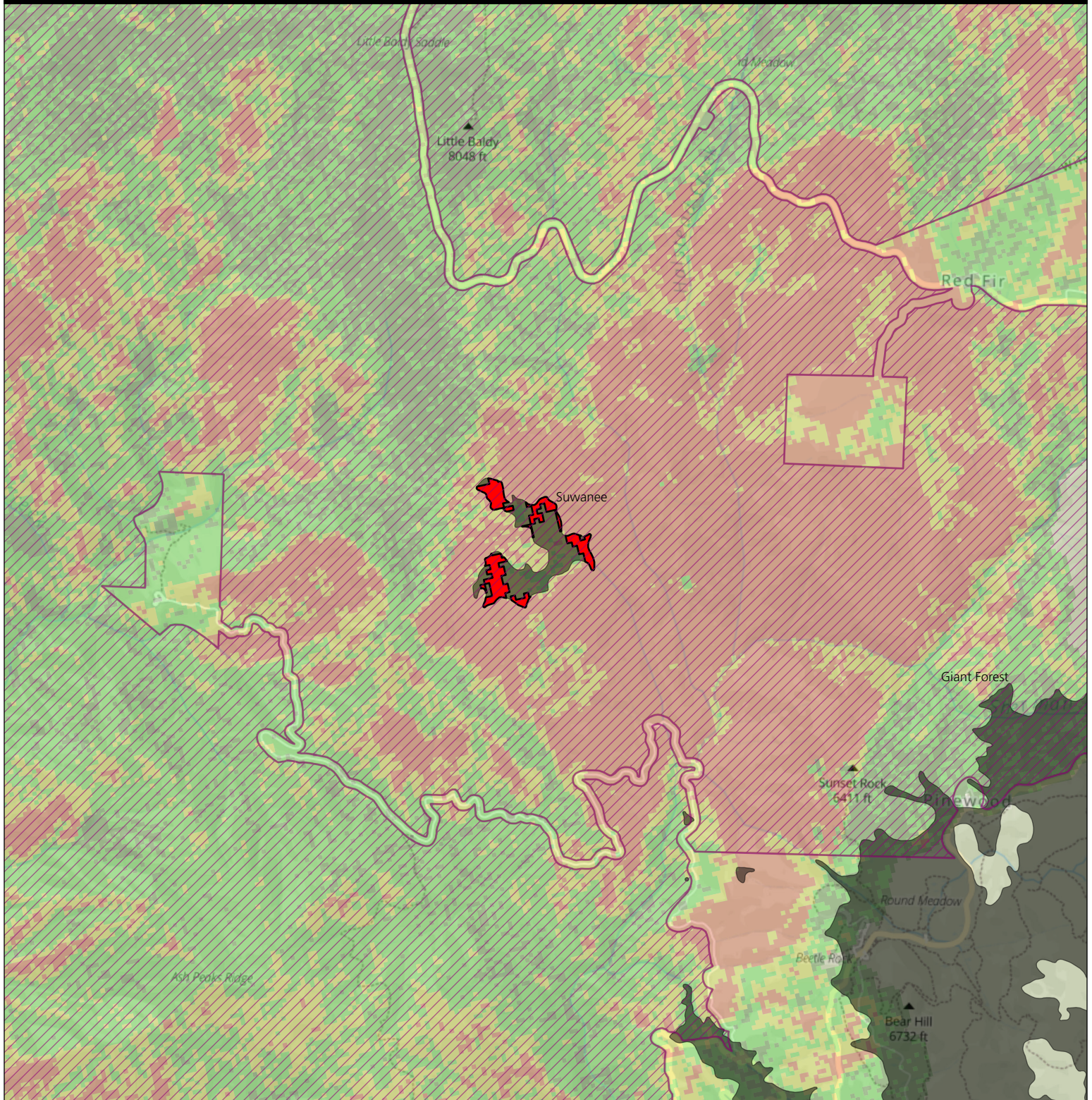




# Proposed Sequoia Replanting Areas

Suwanee

Sequoia and Kings Canyon National Parks  
National Park Service  
U.S. Department of the Interior

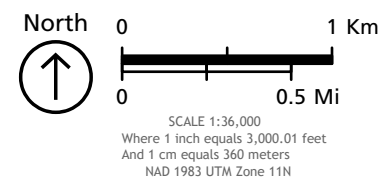


- Sequoia Replanting Area
- Giant Sequoia Groves
- Park Boundary
- Designated Wilderness

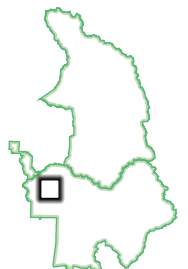
- Fire Severity (cbi4)**
- No Change Detected (CBI: 0-0.1)
  - Low Severity (CBI: 0.1-1.25)
  - Moderate Severity (CBI: 1.25-2.25)
  - High Severity (CBI: 2.25-3)

Produced by: NPS, SEKI GIS; 2/7/2023

This map shows areas where giant sequoia groves in Sequoia and Kings Canyon National Parks were severely impacted by wildfire. These areas are under consideration for potential replanting.



MAP FRAME EXTENT

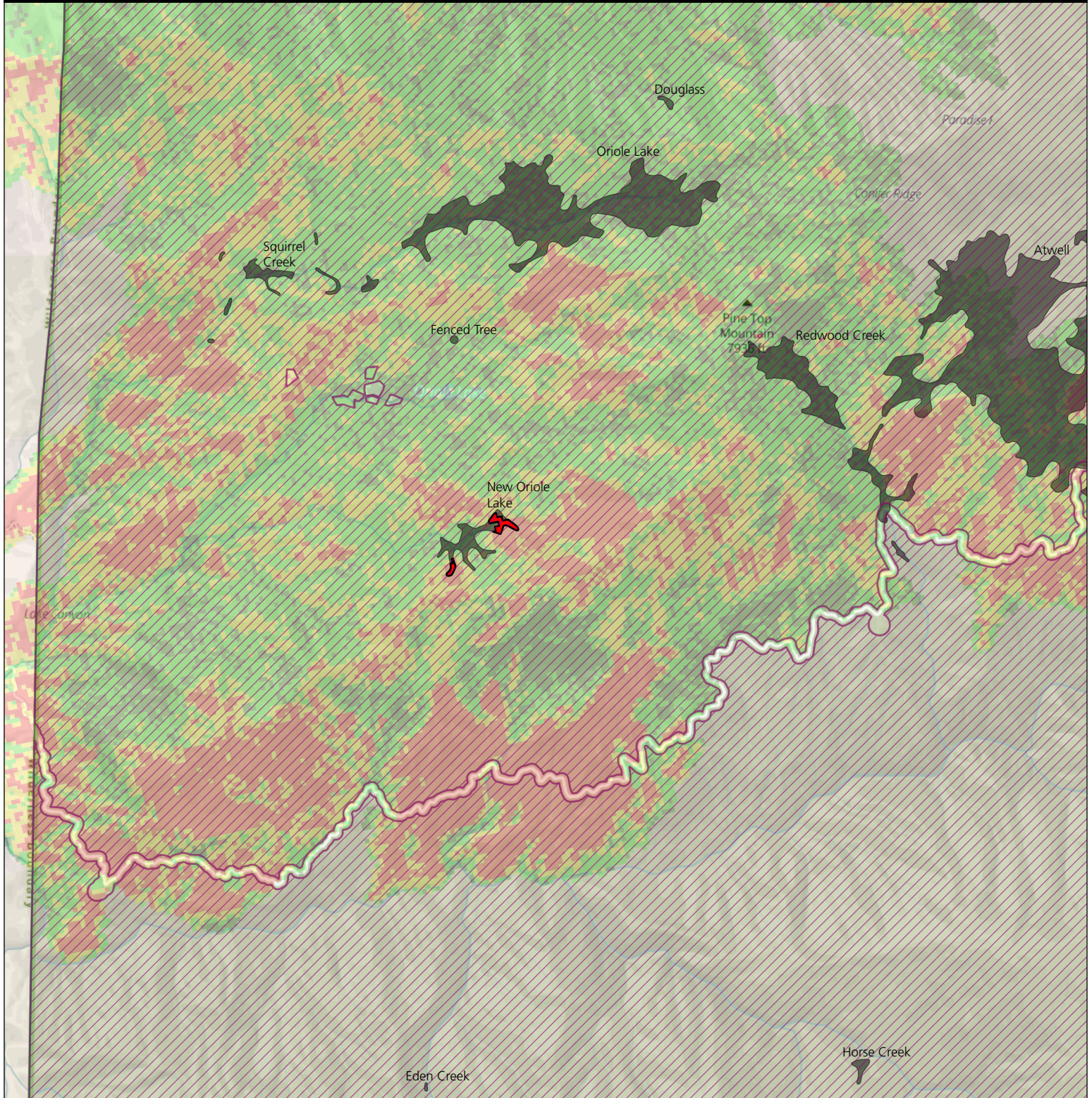




# Proposed Sequoia Replanting Areas

New Oriole Lake

Sequoia and Kings Canyon National Parks  
National Park Service  
U.S. Department of the Interior

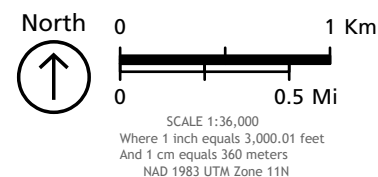


- Sequoia Replanting Area
- Giant Sequoia Groves
- Park Boundary
- Wilderness**
- Designated Wilderness

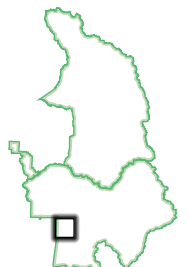
- Fire Severity (cbi4)**
- No Change Detected (CBI: 0-0.1)
  - Low Severity (CBI: 0.1-1.25)
  - Moderate Severity (CBI: 1.25-2.25)
  - High Severity (CBI: 2.25-3)

Produced by: NPS, SEKI GIS; 2/7/2023

This map shows areas where giant sequoia groves in Sequoia and Kings Canyon National Parks were severely impacted by wildfire. These areas are under consideration for potential replanting.



MAP FRAME EXTENT

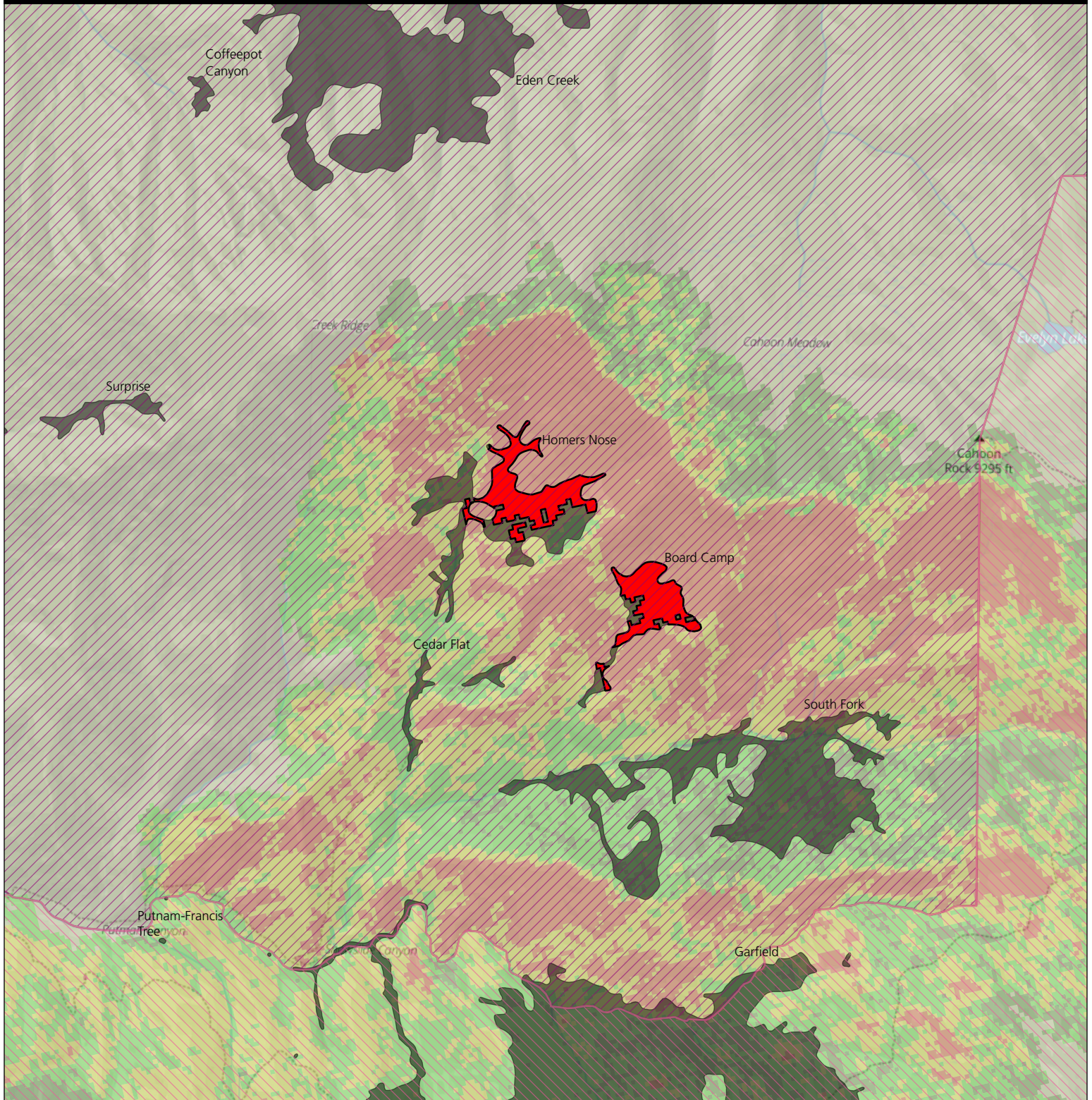




# Proposed Sequoia Replanting Areas

Homers Nose and Board Camp

Sequoia and Kings Canyon National Parks  
National Park Service  
U.S. Department of the Interior

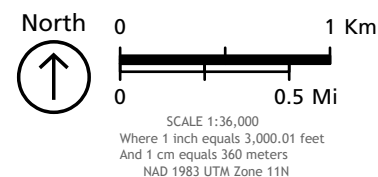


- Sequoia Replanting Area
- Giant Sequoia Groves
- Park Boundary
- Wilderness**
  - Designated Wilderness
  - Proposed Wilderness

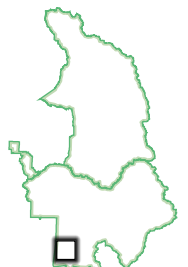
- Fire Severity (cbi4)**
- No Change Detected (CBI: 0-0.1)
  - Low Severity (CBI: 0.1-1.25)
  - Moderate Severity (CBI: 1.25-2.25)
  - High Severity (CBI: 2.25-3)

Produced by: NPS, SEKI GIS; 2/7/2023

This map shows areas where giant sequoia groves in Sequoia and Kings Canyon National Parks were severely impacted by wildfire. These areas are under consideration for potential replanting.



MAP FRAME EXTENT

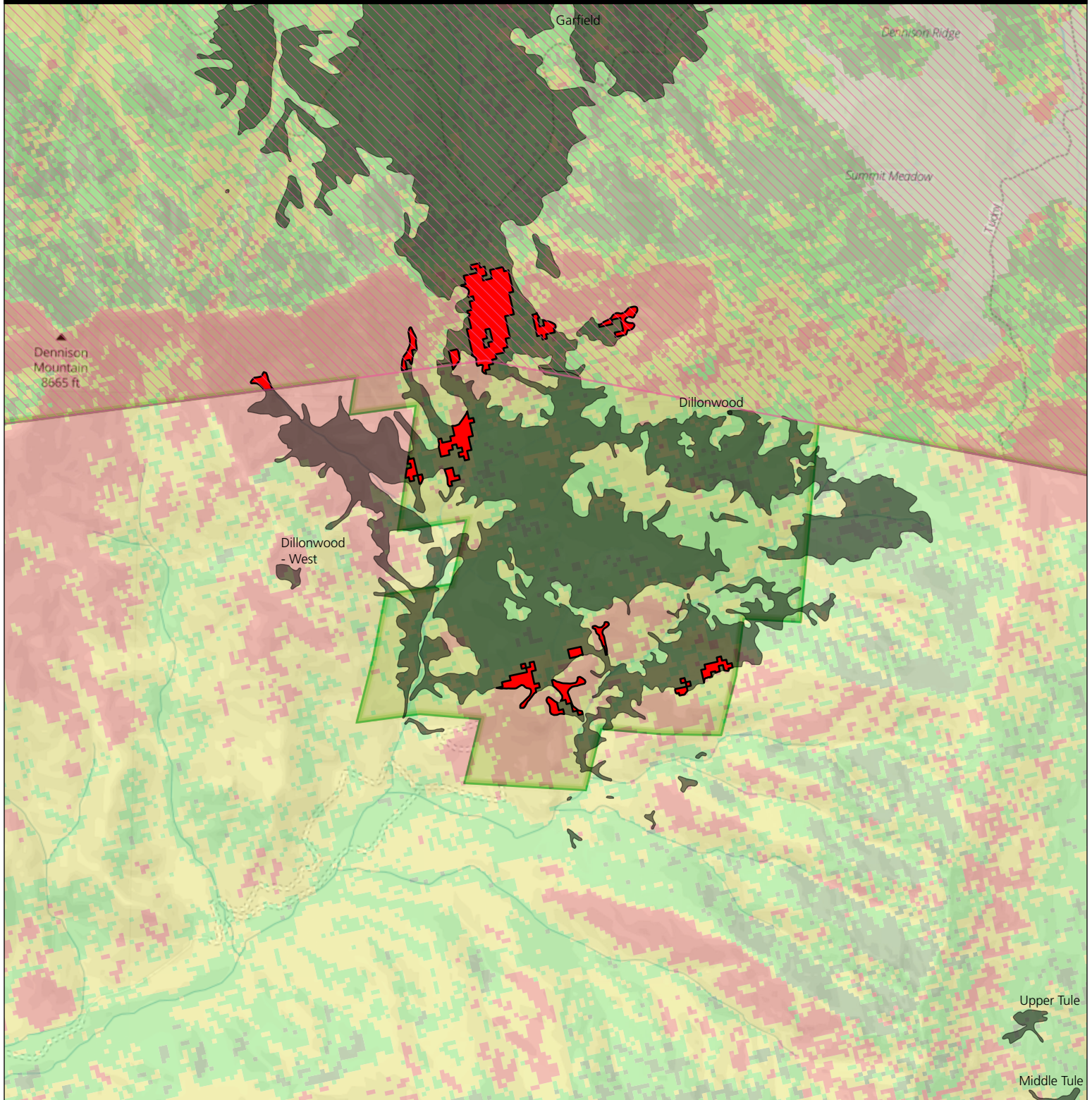




# Proposed Sequoia Replanting Areas

Dillonwood

Sequoia and Kings Canyon National Parks  
National Park Service  
U.S. Department of the Interior

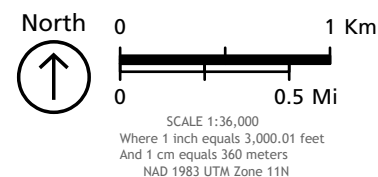


- Sequoia Replanting Area
- Giant Sequoia Groves
- Park Boundary
- Wilderness**
- Proposed Wilderness

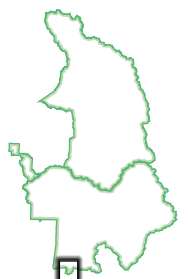
- Fire Severity (cbi4)**
- No Change Detected (CBI: 0-0.1)
  - Low Severity (CBI: 0.1-1.25)
  - Moderate Severity (CBI: 1.25-2.25)
  - High Severity (CBI: 2.25-3)

Produced by: NPS, SEKI GIS; 2/7/2023

This map shows areas where giant sequoia groves in Sequoia and Kings Canyon National Parks were severely impacted by wildfire. These areas are under consideration for potential replanting.



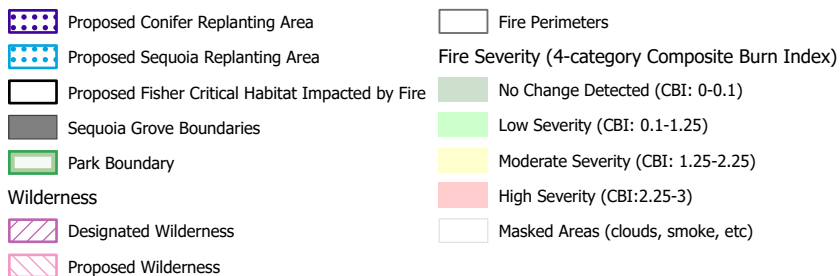
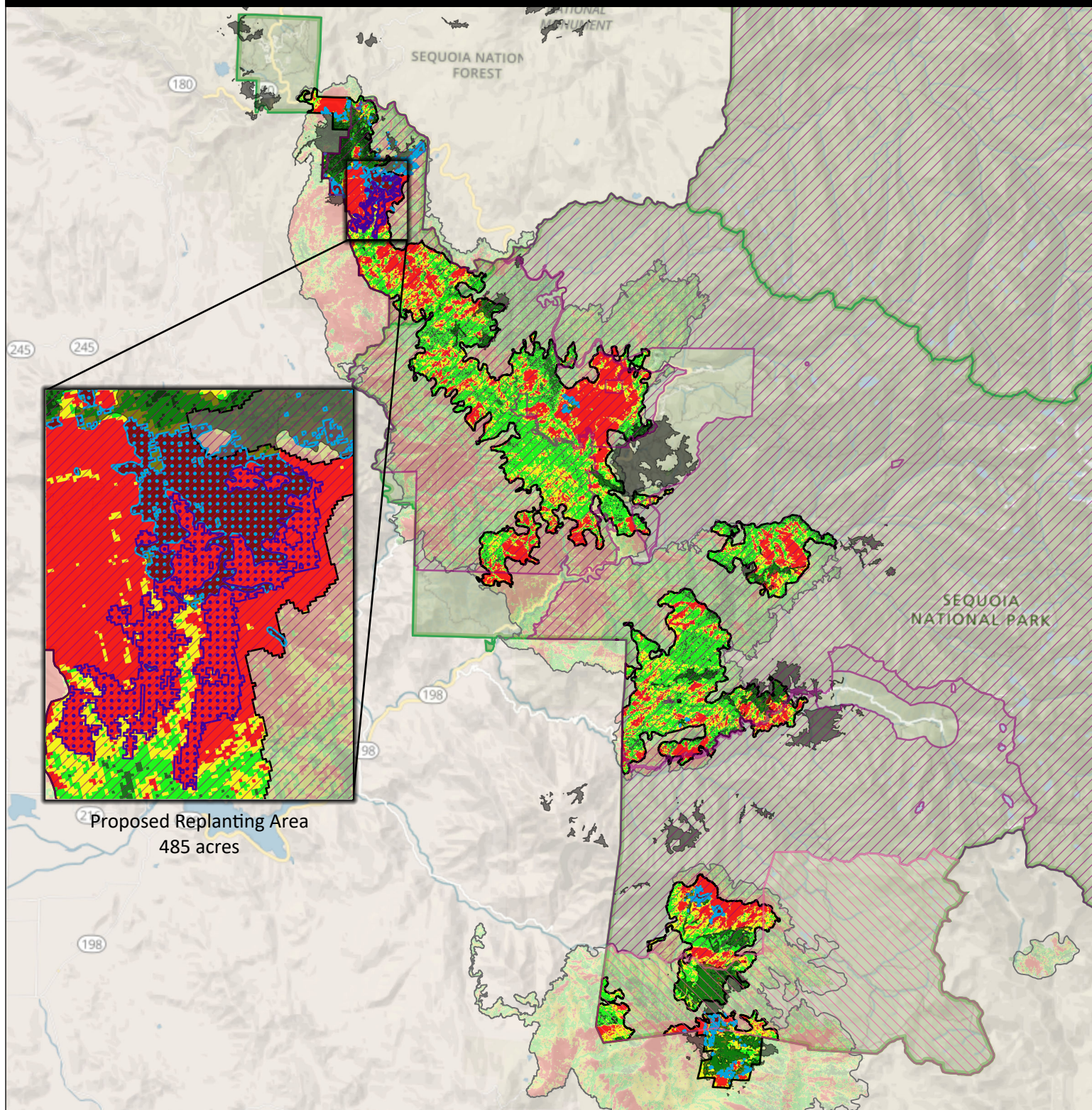
MAP FRAME EXTENT





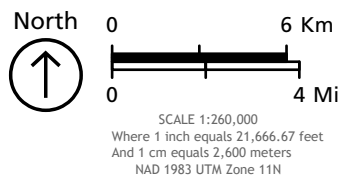
# Fire-Impacted Fisher Habitat

Sequoia and Kings Canyon National Parks  
National Park Service  
U.S. Department of the Interior



Produced by: NPS, SEKI GIS; 2/21/2023

This map shows an intersection of the 11/07/2023 proposed fisher critical habitat layer and fire severity from recent wildfires. Within the impacted habitat, it shows a proposed replanting area defined by the Post-fire Conifer Regeneration Prediction (poscrpt) model.



MAP FRAME EXTENT

