



Fairy Falls Day Use Area Site Planning Public Meeting

March 7, 2023
Water Street Inn
Stillwater, MN

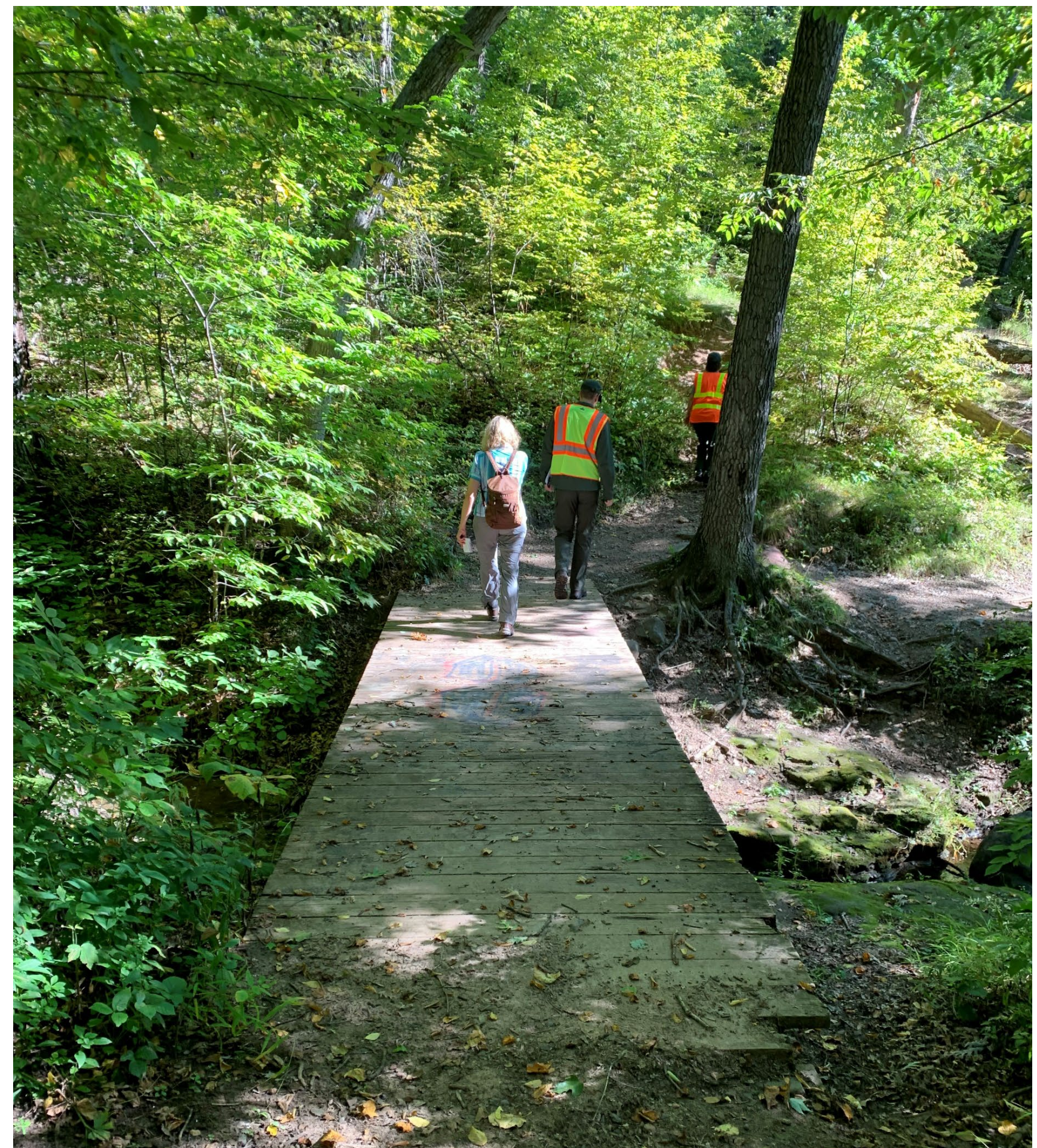
Open House: 5:00 – 7:00 pm
Presentation: 5:30 pm





About Fairy Falls Day Use Area

- Has a long history of human use, and provides 54 acres of habitat for a variety of plants and animals
- Managed by the National Park Service since 1980
- Was closed to the public in summer 2020 for safety concerns, and reopened in winter 2022



Planning for the Future

- Began public planning process in fall 2021
- Also working with Tribal partners and agency partners
- Developed two site options based on public input
- Will compare one or both options against current management (which is not the preference of the National Park Service)



Current Conditions Map



Fairy Falls Day Use Area

- Legend**
- ▲ Area Closed For Restoration
 - Silver Creek
 - - - Recommended Undesignated Trail
- Land Ownership**
- NATIONAL PARK SERVICE
 - Private

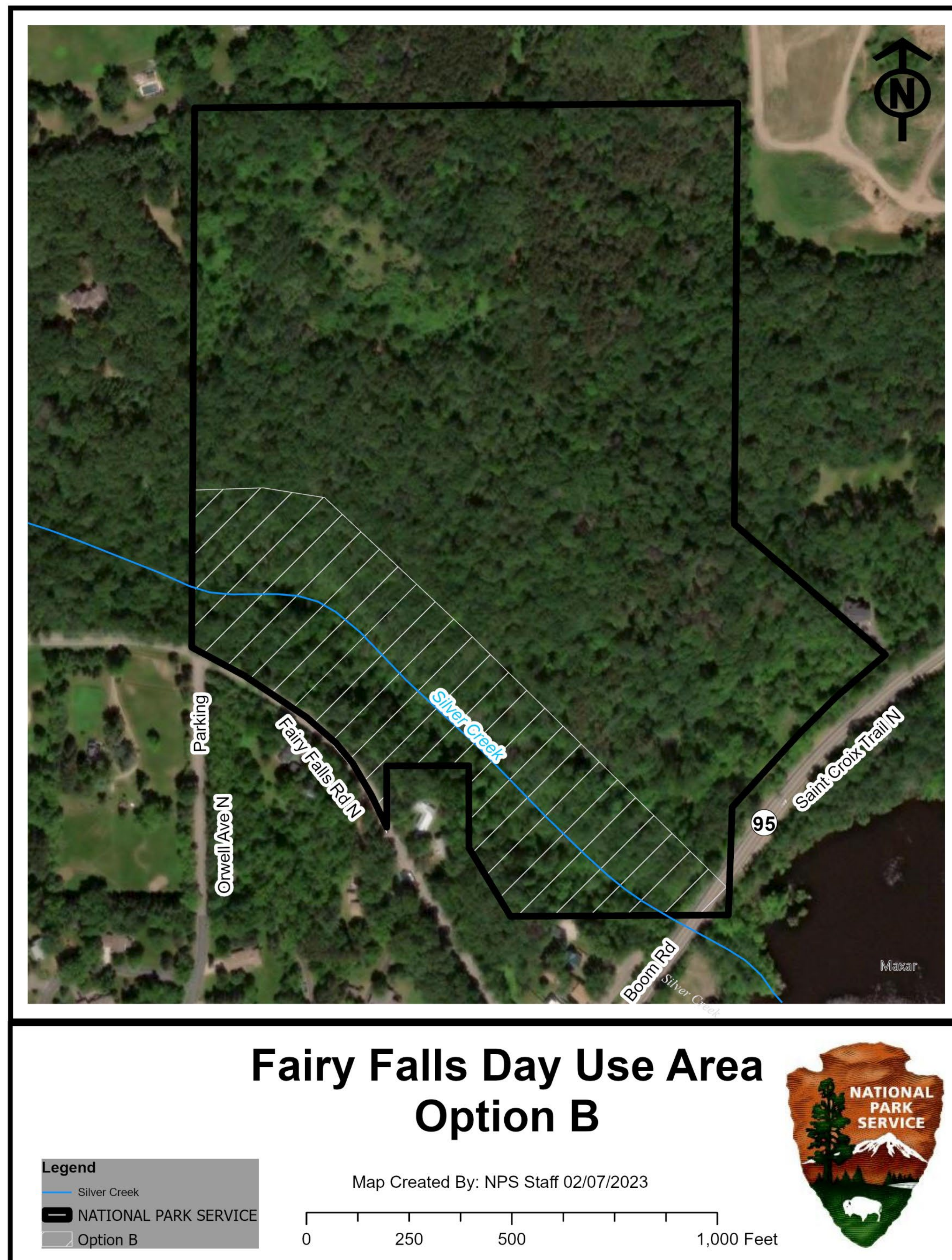
Map Created By: NPS Staff 02/2023

0 250 500 1,000Feet





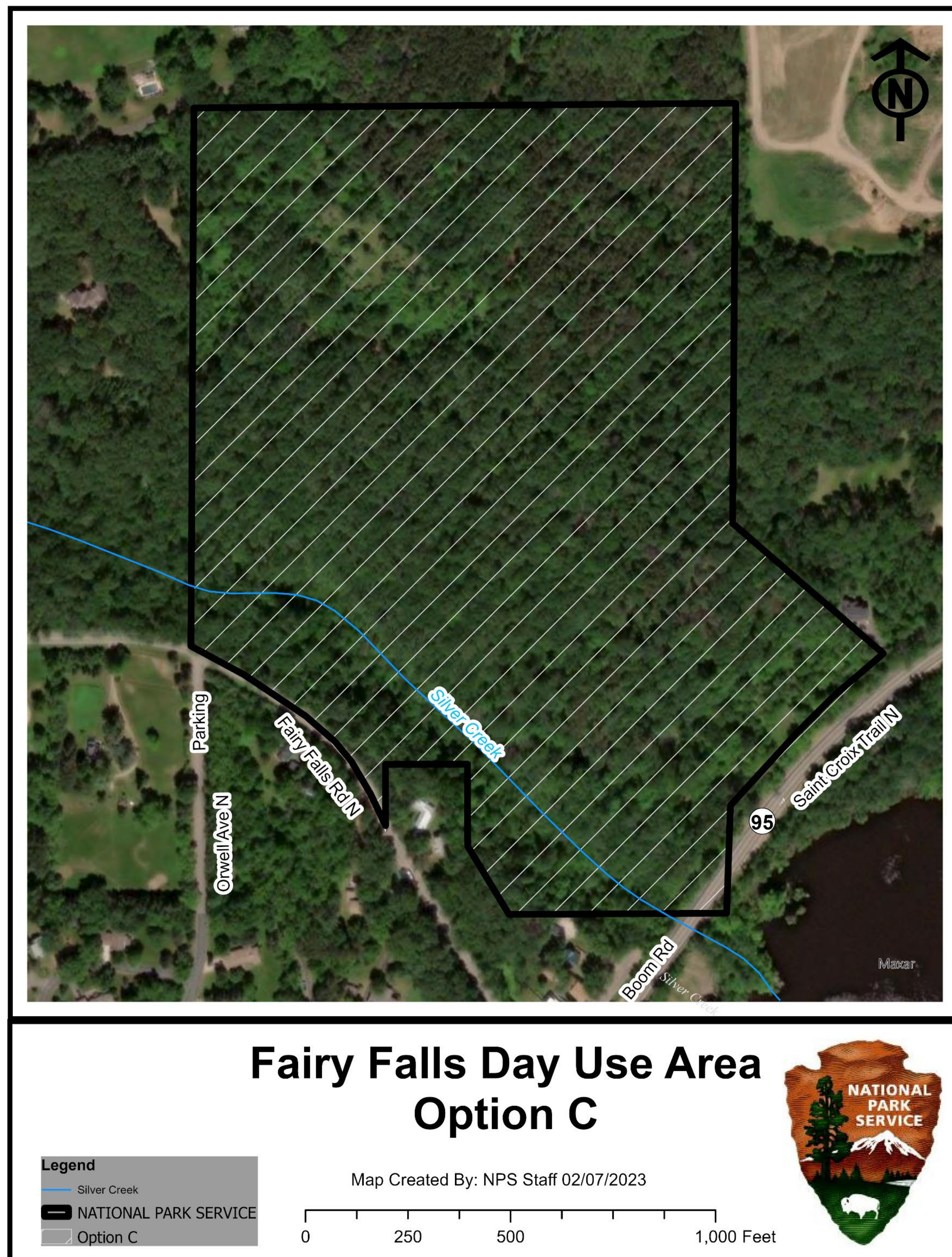
Site Option B



- Visitor use would be focused on the waterfall, but access would be allowed across the site
- Interpretive signage and educational focus on waterfall
- Continue to work with partners to provide parking and safe access
- Seek a permanent parking solution
- Primary visitor activities: visiting waterfall, photography, short hikes
- Visitors would have more encounters with other visitors near the waterfall



Site Option C



- Visitor use would take place at the waterfall and be dispersed site-wide with a natural-surface loop trail
- Interpretive signage and educational materials dispersed across site
- Continue to work with partners to provide parking and safe access
- Seek a permanent parking solution
- Primary visitor activities: visiting waterfall, longer walking loop
- Visitors may encounter others near the waterfall and also along loop trail system

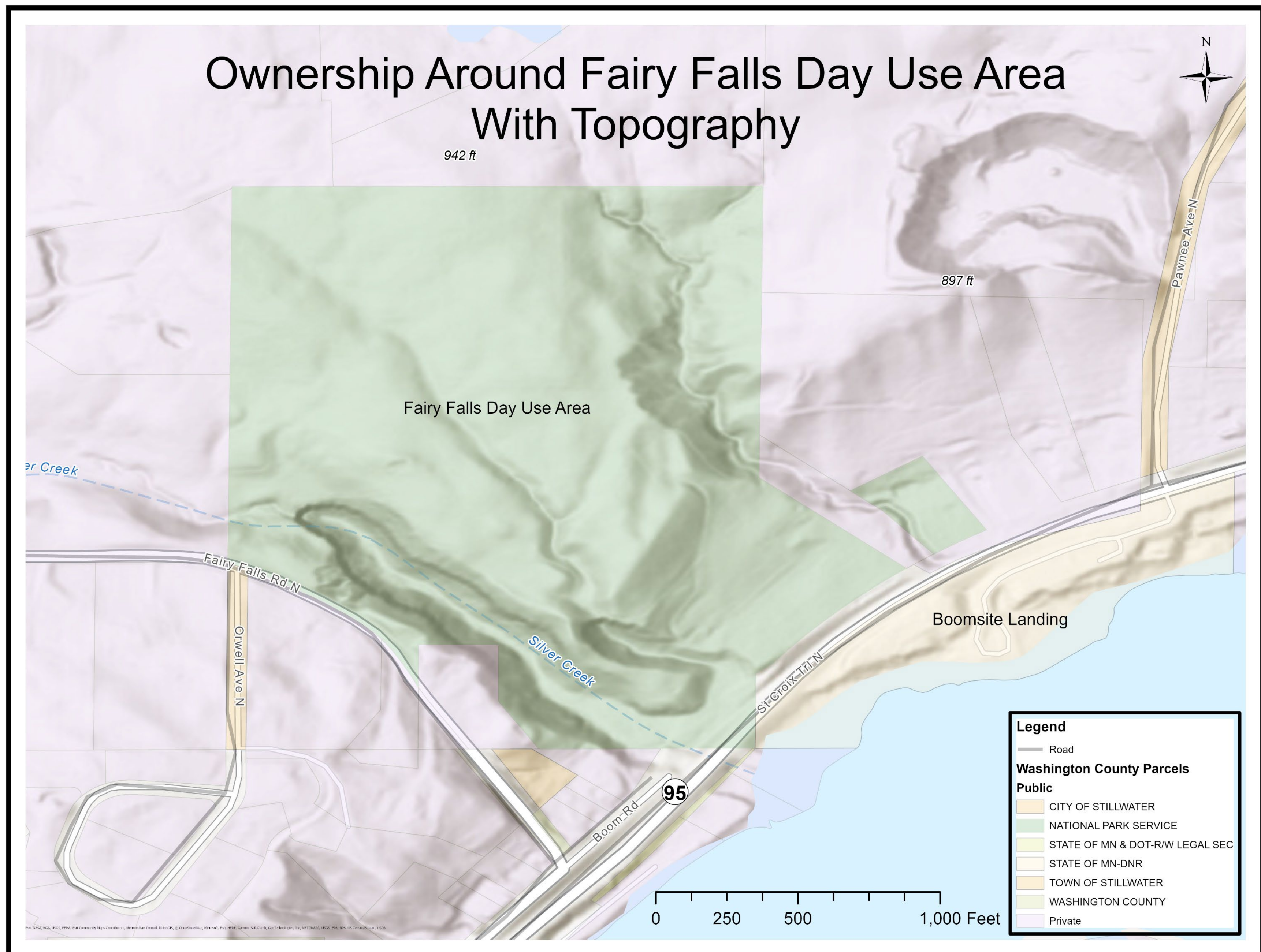


Challenges and Opportunities





Parking Considerations



- Currently, there is no parking available on Fairy Falls Day Use Area property
- Riverway staff are seeking a permanent parking solution
- Riverway staff are working with neighbors, community members, and partner agencies to identify options



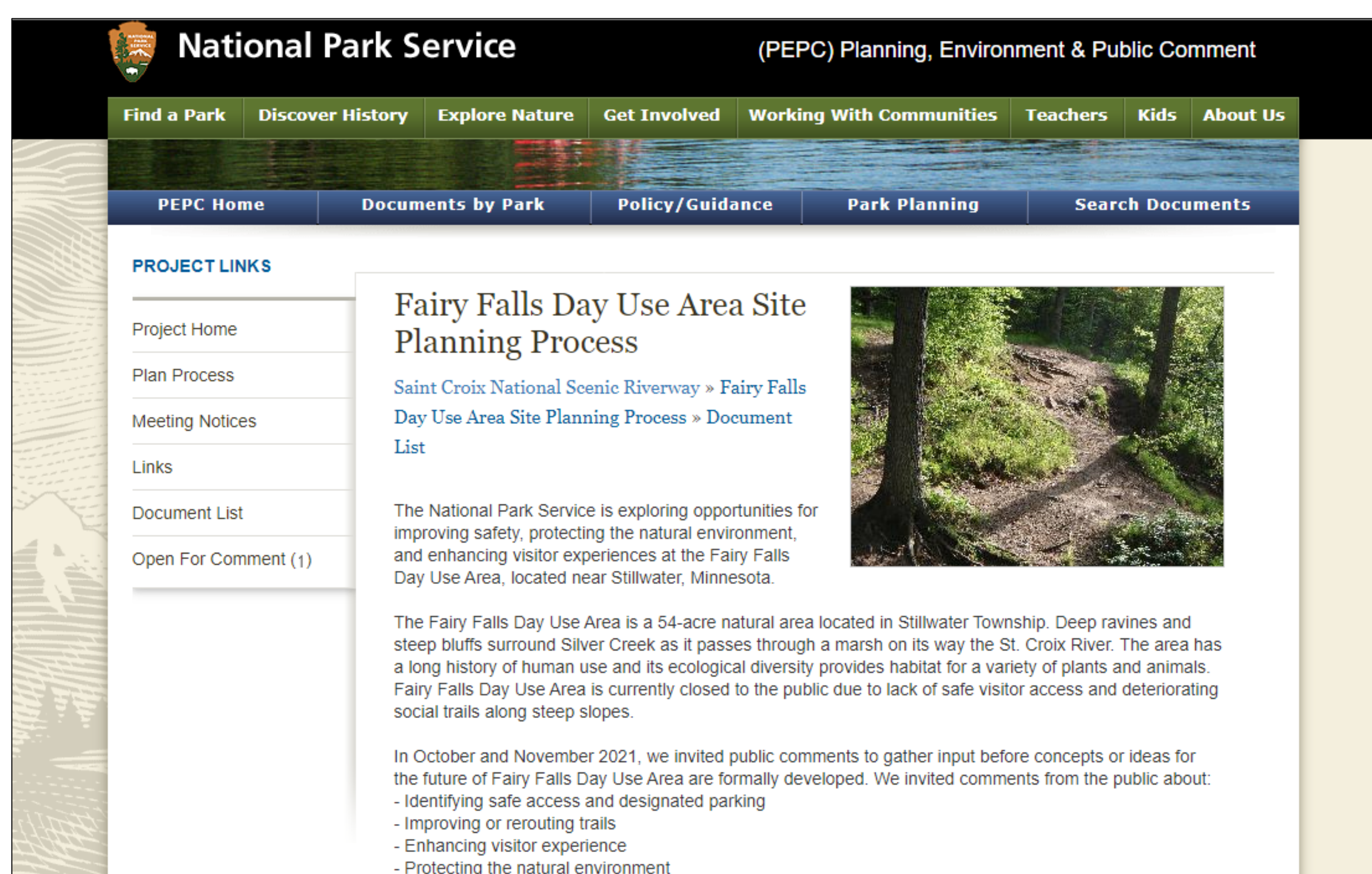
NPS Management Activities that Would Occur Under Either Site Option:

- Maintain a rustic and natural feel in the Day Use Area
- Continue partnerships with local communities and neighbors to provide parking and safe access
- Seek a permanent parking solution
- Allow use in Fairy Falls Day Use Area for daytime use only, from sunrise to sunset
- Prohibit overnight use, camping, and fires
- Provide improved maps and signs including safety and orientation information
- Provide opportunities for visitors with a range of skill levels and abilities
- Protect natural and cultural resources, such as invasive plant species management
- Continue engagement with Tribal partners
- Carry out occasional management or closures due to unsafe conditions or highly eroded trails
- Continue law enforcement patrols and maintenance activities to support a safe, clean day use area
- Allow deer archery hunting in Fairy Falls Day Use Area in accordance with state and federal laws



Please Share Your Feedback!

- Please submit comments by March 29, 2023.
- The preferred method for receiving public comments is through our planning website:
<https://parkplanning.nps.gov/fairyfalls>
- Written comments can be mailed to Lisa Yager at St. Croix National Scenic Riverway, Fairy Falls Day Use Area Site Planning, 401 N. Hamilton Street, St. Croix Falls, WI 54024.



Next Steps

- Review and summarize public feedback on options
- Continue conversations with Tribal partners, agency partners, and local communities
- Undertake compliance with the environmental and other laws and regulations
- Continue to provide public input opportunities