

# Glacier Bay National Park and Preserve



## Draft Marine Management Plan

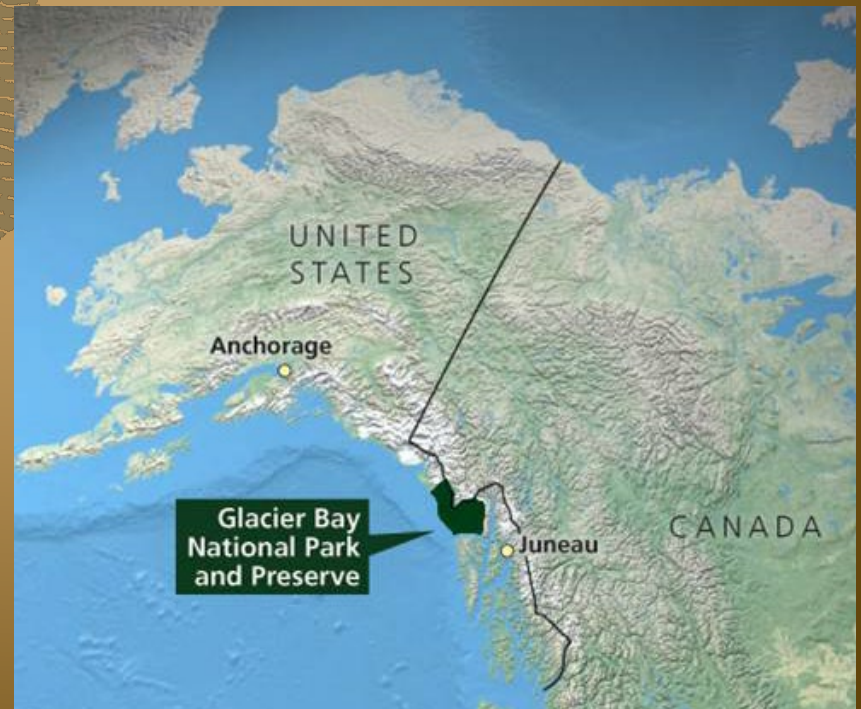
**Environmental Assessment  
Including Updates to Vessel Quotas  
and Operating Requirements**

# Welcome

**Public Hearing Presentation**

**Gustavus, Alaska**  
December 7, 2022

**Juneau, Alaska**  
December 13, 2022



# Presentation Outline

- 1 Background
- 2 EA Alternatives
- 3 Schedule
- 4 How to Comment and Next Steps



# Background

- Marine waters make up nearly 1/5 of the park
- Most of the park's visitation occurs in the marine waters
- Since 1979 marine vessels have been managed to balance:
  - ❖ the protection of park resources
  - ❖ a range of visitor opportunities consistent with park purposes and values

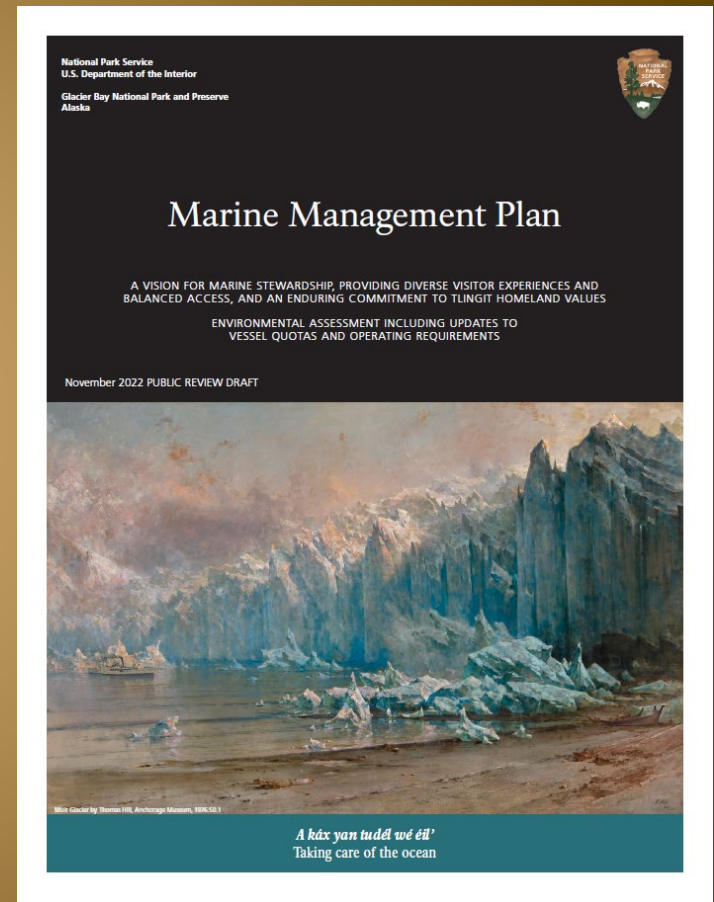


# Background

- This summer the park announced plans to update existing marine management frameworks
- A scoping newsletter was shared for 30-day public comment initiating the National Environmental Policy Act (NEPA) process that presented:
  - ❖ A draft purpose and need for taking action
  - ❖ Draft alternatives (A, B, and C)
  - ❖ Environmental issues for further analysis

# Background

- The park received a range of public feedback that was used to inform:
  - ❖ A new alternative that now represents the agency's preferred alternative
  - ❖ The preparation of a Draft Marine Management Plan and an Environmental Assessment out now for public review through December 30, 2022



# Background

- Document Part I - Draft Marine Management Plan
  - ❖ Management Context
  - ❖ Planning Needs:
    - ▣ Marine Stewardship and Science
    - ▣ Providing Diverse Visitor Experiences and Balanced Access
    - ▣ An Enduring Commitment to Tlingit Homeland Values
  - ❖ Vision and Desired Conditions
  - ❖ Zoning
  - ❖ Adaptive Management Strategies

# Background

- Document Part II - Environmental Assessment (EA)
  - ❖ Purpose and Need
  - ❖ Range of Alternatives (\*\*new Alternative D\*\*)
  - ❖ Affected Environment and Analysis of Key Issues:
    - Visitor Use and Experience
    - Airborne Acoustic Environment
    - Underwater Acoustic Environment
    - Marine Wildlife
    - Ethnographic Resources & Homeland Values

# Background

- Document Appendices
  - ❖ Supporting References and Methodologies
  - ❖ Dismissed Alternatives and Impact Topics
  - ❖ Mitigation Measures and Best Management Practices
  - ❖ Select Laws, Regulations, Policies, and Guidance



# Alternatives

## ■ The EA Alternatives:

- ❖ Address the purpose and need
- ❖ Contain programmatic and site-specific actions
- ❖ Include actions common to all alternatives

## ■ Alternatives presented in the EA:

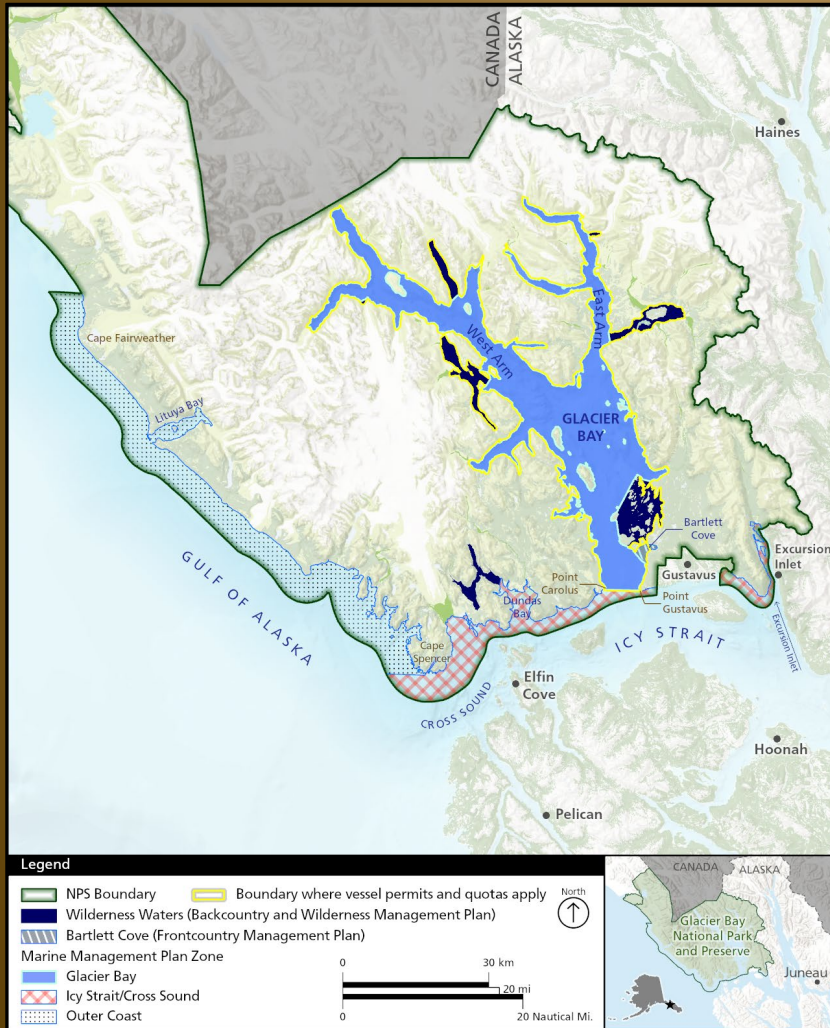
- ❖ Alternative A: No-Action
- ❖ Alternative B: NPS's initial proposed action
- ❖ Alternative C
- ❖ Alternative D: NPS's preferred alternative

# Alternative A: No-Action

- Current park management:
  - ❖ Five Zones: General Management Plan (1984)
  - ❖ Private Vessel Permit Season: June 1 - August 31
  - ❖ Private Vessel Permit Duration: Seven days (six nights)
  - ❖ Daily Quota Permit Season: 25 private vessels
    - 13 advance-notice permits
    - 12 short-notice permits
  - ❖ Nonmotorized Waters

# Action Alternatives

## Programmatic Actions Common to All



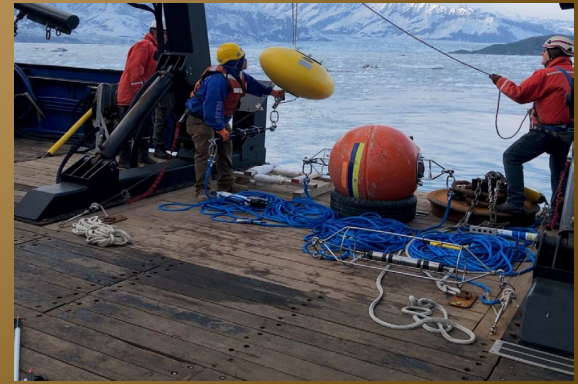
- Broad Marine Management Framework including zoning
- New Vessel Definitions
  - ❖ Nonmotorized Vessel
  - ❖ Lower-Impact Vessel
  - ❖ Administrative Use Motorize Vessel
  - ❖ Private Vessels Longer than 79 Feet (clarification)



# Action Alternatives

## Programmatic Actions Common to All (cont'd)

- Administrative Use Floating Cabins/Seasonally Moored Vessels
- Communication Upgrades
- Oceanographic Monitoring Stations
- Clarification of Transit Permit Conditions





# Action Alternatives

## Site-Specific Actions Common to All

### ■ Conditional Transit Permits:

- ❖ Depends on availability within the daily private vessel quota and seasonal limit
- ❖ Only owner-occupied private vessels for recreational purposes
- ❖ Only one allowed at any one time
- ❖ Only one way per day per vessel



# Action Alternatives

## Site-Specific Actions Common to All (cont'd)

- Glacier Bay Private Vessel Management:
  - ❖ Permit Duration — Five days (four nights)
  - ❖ Permit Season — May 1 through September 30
  - ❖ Subject to Quotas — June 1 to August 31
  - ❖ Short-notice permit application:
    - Random draw lottery
    - 3 days prior to permit start date



# Action Alternatives

## Site-Specific Actions Common to All (cont'd)

- Operating Requirements such as call in/call out
- Monitoring for Management of New Vessel Classes:
  - ❖ Administrative: 600 use days in Glacier Bay Initial calendar year management trigger
  - ❖ Nonmotorized Vessels:
    - Day Use - 18 days with more than 75 vessels per day
    - Overnight Use - 18 days with more than 62 vessels per day
- Indicators, Thresholds and Corrective Management to monitor vessel densities, visitor experience, and resource conditions



# Alternative Specific Elements

Alternative Element	Alternative B	Alternative C	Alternative D (Preferred Alternative)
Private Vessel Permits	30 private vessel permits <ul style="list-style-type: none"> <li>• 25 overnight</li> <li>• 5 day use</li> </ul>	25 private vessel permits <ul style="list-style-type: none"> <li>• 20 overnight</li> <li>• 5 day use</li> </ul>	25 private vessel permits <ul style="list-style-type: none"> <li>• 15 advance-notice</li> <li>• 10 short-notice</li> </ul>
Private Vessel Permit & Quota Season	10 unused overnight permits can be converted to day use permits  Can hold 2 advance-notice permits; only 1 can be during peak season.	Same as alternative B	Can hold up to 2 permits at a time  Can only obtain 1 advance-notice permit per year



# Alternative Specific Elements (cont'd)

Alternative Element	Alternative B	Alternative C	Alternative D (Preferred Alternative)
Timing of Private Vessel Permit Release	<p>Overnight (25 permits)</p> <ul style="list-style-type: none"> <li>• 13 advance-notice (7 via priority ranking)</li> <li>• 12 short-notice</li> </ul> <p>Day use (5 permits)</p> <ul style="list-style-type: none"> <li>• Issued as short-notice</li> </ul>	<p>Overnight (20 permits)</p> <ul style="list-style-type: none"> <li>• 10 advance-notice (via priority ranking)</li> <li>• 10 short-notice</li> </ul> <p>Day use (5 permits)</p> <ul style="list-style-type: none"> <li>• 1 advance-notice</li> <li>• 4 short-notice</li> </ul>	<p>Advance-notice: 15 permits</p> <ul style="list-style-type: none"> <li>• Release Feb 1 random draw lottery</li> <li>• Second random draw lottery</li> <li>• Unused offered first come, first served</li> </ul> <p>Short-notice: 10 permits</p>
Lower-impact Vessels	Component of priority system for some advance-notice overnight permits	Same as alternative B	Park may exclude from some operating requirements (e.g., distance to shore requirements)

## Alternative Specific Elements (cont'd)

Alternative Element	Alternative B	Alternative C	Alternative D (Preferred Alternative)
Private Vessels Longer than 79 Feet	<p>Not considered a private vessel</p> <p>Superintendent may reallocate unused cruise ship or tour vessel permits for use</p>	<p>Not considered a private vessel</p> <p>Not allowed to enter Glacier Bay</p>	Same as alternative B
Nonmotorized Waters in the East Arm	<p>Cruise ships and tour vessels prohibited north of Muir Point</p> <p>Nonmotorized waters</p> <ul style="list-style-type: none"> <li>• Muir Inlet (May 1 -Sep 15)</li> <li>• Wachusett Inlet (no dates—motorized year-round)</li> </ul>	<p>Nonmotorized waters</p> <ul style="list-style-type: none"> <li>• Muir Inlet (May 1 - Jul 15)</li> <li>• Wachusett Inlet (Jul 16 - Sep 15)</li> </ul>	<p>Same as alternative C, plus:</p> <p>Cruise ships and tour vessels prohibited north of Muir Point</p>

# Schedule

Steps in this Plan/EA Process	
August 2022	Public Scoping
Sept-Nov 2022	NPS Develops Draft Plan and EA
Nov-Dec 2022	Draft Plan and EA released to the public for 30-day review and public comment period, including public hearings <b>(We are here!)</b>
January 2022	NPS Develops Final Plan
January 2022	Decision Document signed by the Regional Director
Jan-Feb 2022	Final Plan and Decision Document Released to Public

# How to Comment

**There are a variety of ways you can comment:**

**Submit electronically (preferred method)**

**[go.nps.gov/GBwaters](https://go.nps.gov/GBwaters)**

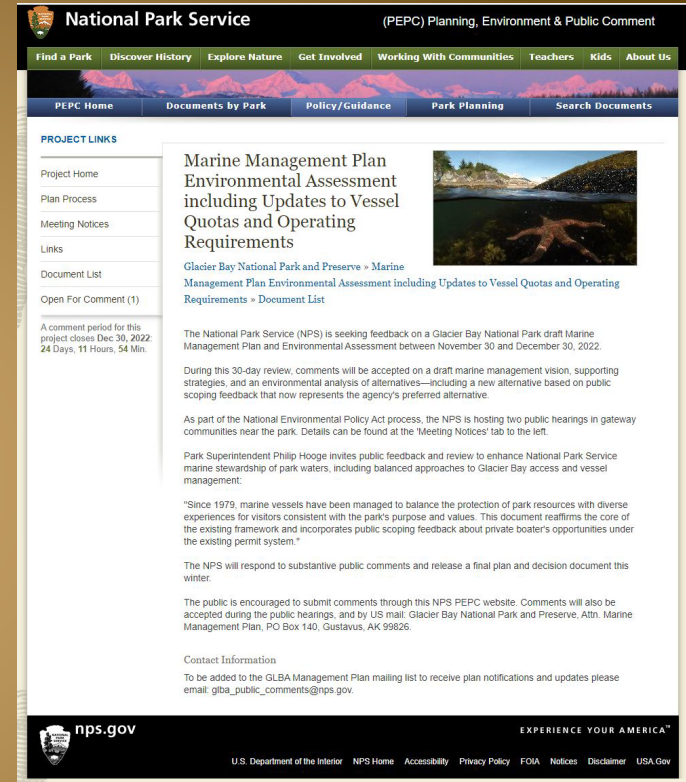
**<https://parkplanning.nps.gov/GBwaters>**

**Mail**

**Glacier Bay National Park and Preserve  
P.O. Box 140, Gustavus, AK 99826**

**Email**

**[GLBA\\_public\\_comments@nps.gov](mailto:GLBA_public_comments@nps.gov)**



**Submit comments by  
December 30, 2022**

**[Go.nps.gov/GBwaters](https://go.nps.gov/GBwaters)**

EXPERIENCE YOUR AMERICA



# Stay Connected

[go.nps.gov/GBwaters](http://go.nps.gov/GBwaters)

National Park Service Planning, Environment and Public Comment System

[nps.gov/glba/getinvolved/planning.htm](http://nps.gov/glba/getinvolved/planning.htm)

Glacier Bay National Park and Preserve Website

[GLBA\\_public\\_comments@nps.gov](mailto:GLBA_public_comments@nps.gov)

Email the Planning Team and be added to our park planning contact list





# Glacier Bay National Park and Preserve

**THANK YOU!**

If you have questions or would like more information, please contact:

Sara Doyle, Outdoor Recreation Planner  
[GLBA\\_public\\_comments@nps.gov](mailto:GLBA_public_comments@nps.gov)

EXPERIENCE YOUR AMERICA