

---

# **Pu‘uhonua o Hōnaunau National Historical Park**

## **Remove and Replace Park Maintenance Facilities**



## **Environmental Assessment Public Scoping Meeting**

November 2022

# WELCOME / INTRODUCTION



*Pu'uhonua o Hōnaunau National Historical Park*



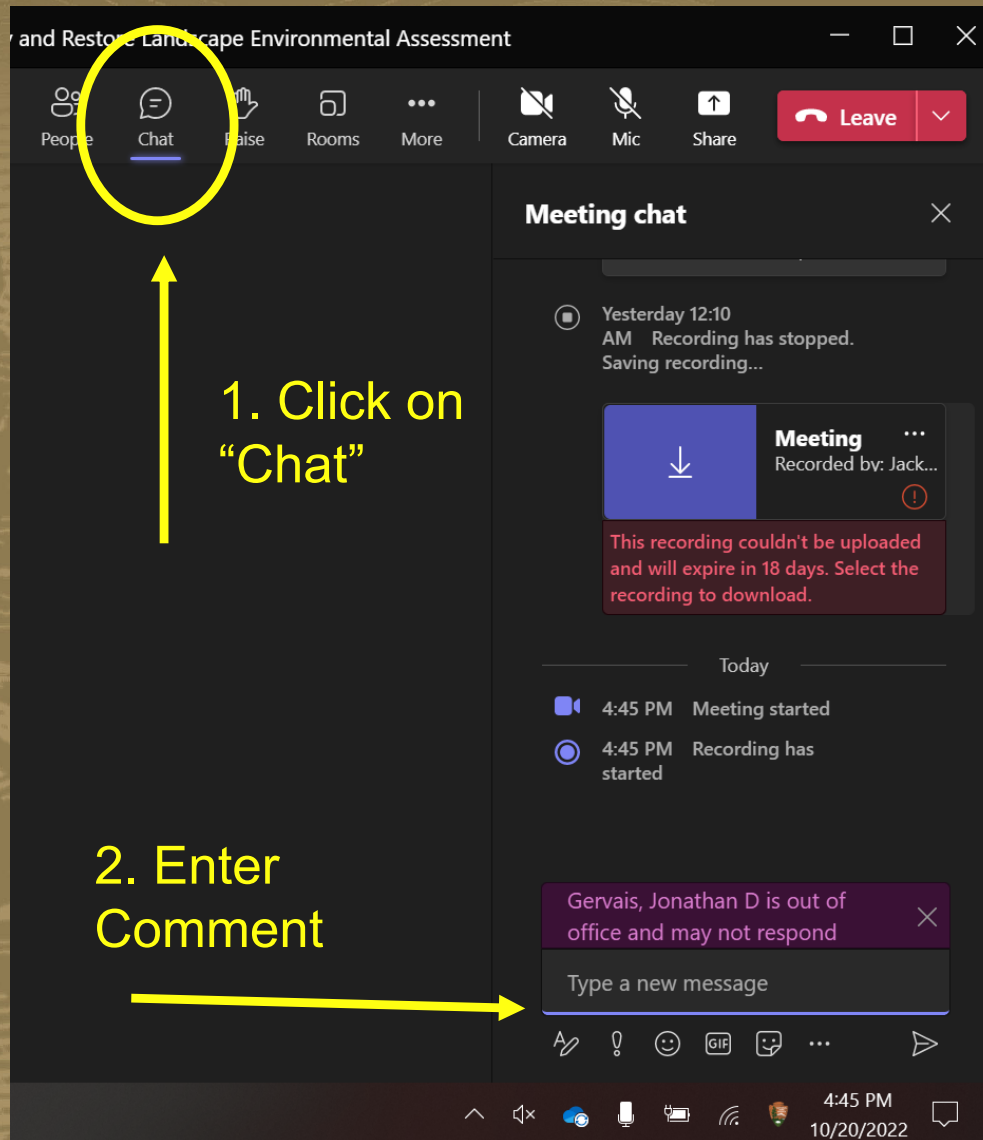
# MEETING PURPOSE



*Existing Facilities*

- To share our proposed project.
- To share preliminary alternatives and environmental compliance requirements.
- To share instructions on how to comment on the environmental issues that should be analyzed in the Environmental Assessment (EA) under NEPA.
- Comment period is now until 11/27/22.
- To provide an opportunity for the public to ask questions and provide feedback.

# MEETING GUIDELINES



- Q&A will follow the presentation.
- Please enter your questions into the chat.
- Additional comments and questions may be submitted through the Planning, Environment & Public Comment (PEPC) website: <https://parkplanning.nps.gov/puhorelocmaint>

# AGENDA

1. National Environmental Policy Act (NEPA) and National Historic Preservation Act (NHPA) processes
2. Project Background
3. Purpose and Need
4. Project Goals and Park Priorities
5. Proposed Action and Alternative Sites
6. Project Schedule / Next Steps
7. How to Submit Comments
8. Question and Answer Session

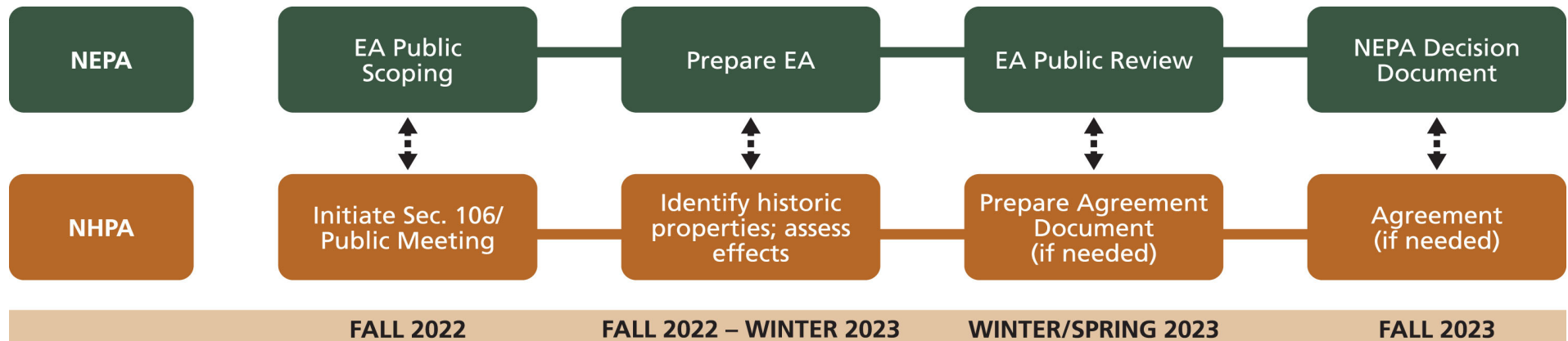


# NATIONAL ENVIRONMENTAL POLICY ACT

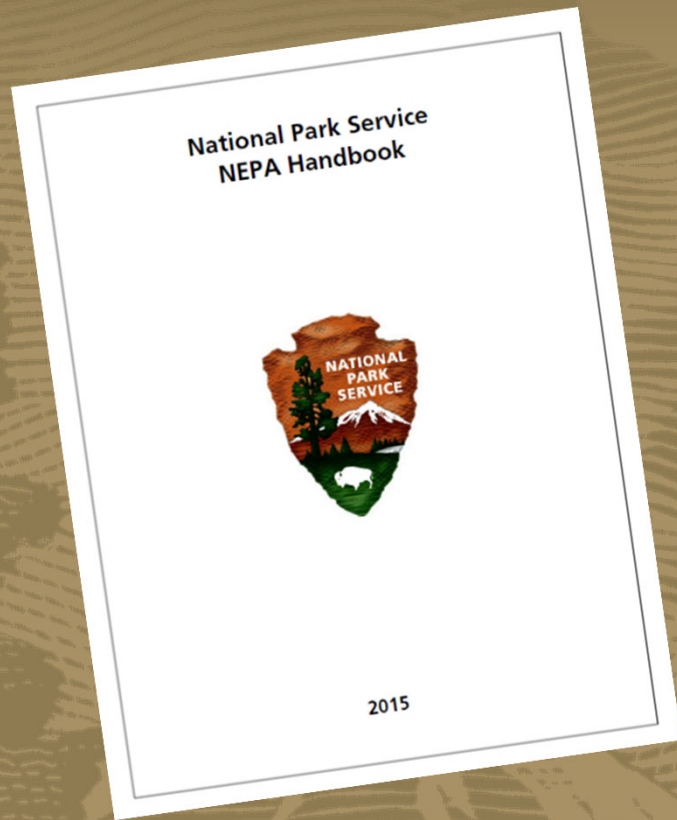
- National Park Service Mission is tied to the National Environmental Policy Act (NEPA).
- The NEPA of 1969 is a national policy for **protecting the environment (natural resources)**.
  - NPS is preparing a NEPA Environmental Assessment (EA) to evaluate the project's environmental impacts.
  - Engage the public in the decision-making process.

# SCHEDULE

**WE ARE HERE**



# NEPA SCOPING: 10/28/22 through 11/27/22



- Scoping is an early and open process for determining the range of issues related to the proposed action to be addressed in the EA.



# NATIONAL HISTORIC PRESERVATION ACT

- Section 106 of the National Historic Preservation Act (NHPA) of 1966 established a process to **protect cultural resources**.
- Requires federal agencies to:
  - Consider and determine the direct and indirect effects of a proposed undertaking on historic properties.
  - Consult with State Historic Preservation Officers (SHPOs), Native Hawaiian Organizations, and other consulting parties.
  - Avoid, resolve, or mitigate adverse effects to historic properties.
- Goal is to **minimize potential harm and damage to historic properties**.
- <https://www.achp.gov/sites/default/files/documents/2017-01/CitizenGuide.pdf>



# EXISTING FACILITIES



*Pu'uhonua o Hōnaunau National Historical Park*



# Existing Maintenance Facilities

- The seven existing buildings were constructed as temporary structures over 50 years ago to house resource management and maintenance staff and equipment.





# Existing Maintenance Facilities

- Located in an area with known archeological and cultural resources and are a visual intrusion on the landscape



*Historic Photo (c. 1963)*



*Existing Facilities (2021-2022)*

# Existing Maintenance Facilities

- Coastal location is subject to inundation from waves



*High Surf Event, 2008*



# Existing Maintenance Facilities

- Outdated facilities



*Steps to buildings and break area*



# PURPOSE AND NEED FOR PROJECT

## Purpose

- Provide safe, modern, functional facilities for Park maintenance and resource management operations.
- Improve the Park experience by removing “temporary” buildings from the cultural landscape.
- Reduce the risks of coastal hazards and sea level rise by relocating the buildings to a more suitable location away from the coast.

## Need

- Without this project, Park maintenance and resource management staff would continue operating in substandard facilities subjected to coastal hazards. The facilities would continue to adversely affect the cultural landscape and park administration.



*Pā Pu'uhonua (The Great Wall)*

# PROJECT GOALS & PRIORITIES

- Improve Park experience.
- Restore, preserve, and protect cultural resources and the cultural landscape.
- Minimize impact of Park operations on community and visitors including utilizing existing infrastructure and utilities.
- Serve operational needs of maintenance and resource management.
- Align with on-going Park planning efforts.



*Existing Buildings*



# PROJECT PROGRESS: 2021-2022

- Stakeholder and public engagement (public meetings on July 14 and 21, 2021).
- Conducted resource, topographic, & soils surveys.
- Identified and prioritized criteria for evaluating alternatives.
- Identified preferred sites and prepared initial designs.



*Existing Buildings*





# ALTERNATIVES EVALUATION

During the initial design phase of the project, a range of alternatives, including multiple construction sites and new facility configurations, were evaluated based on:

- Minimizing impacts to cultural and natural resources.
- Functional efficiency and security.
- Cost and feasibility of construction and maintenance.



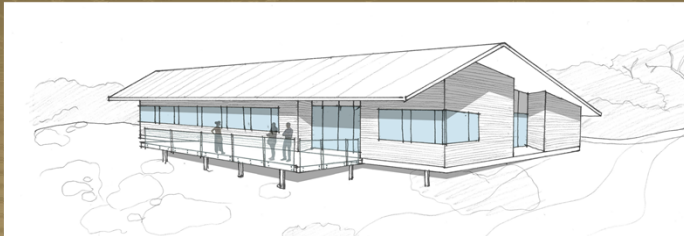
# ALTERNATIVE A (MAKAI)



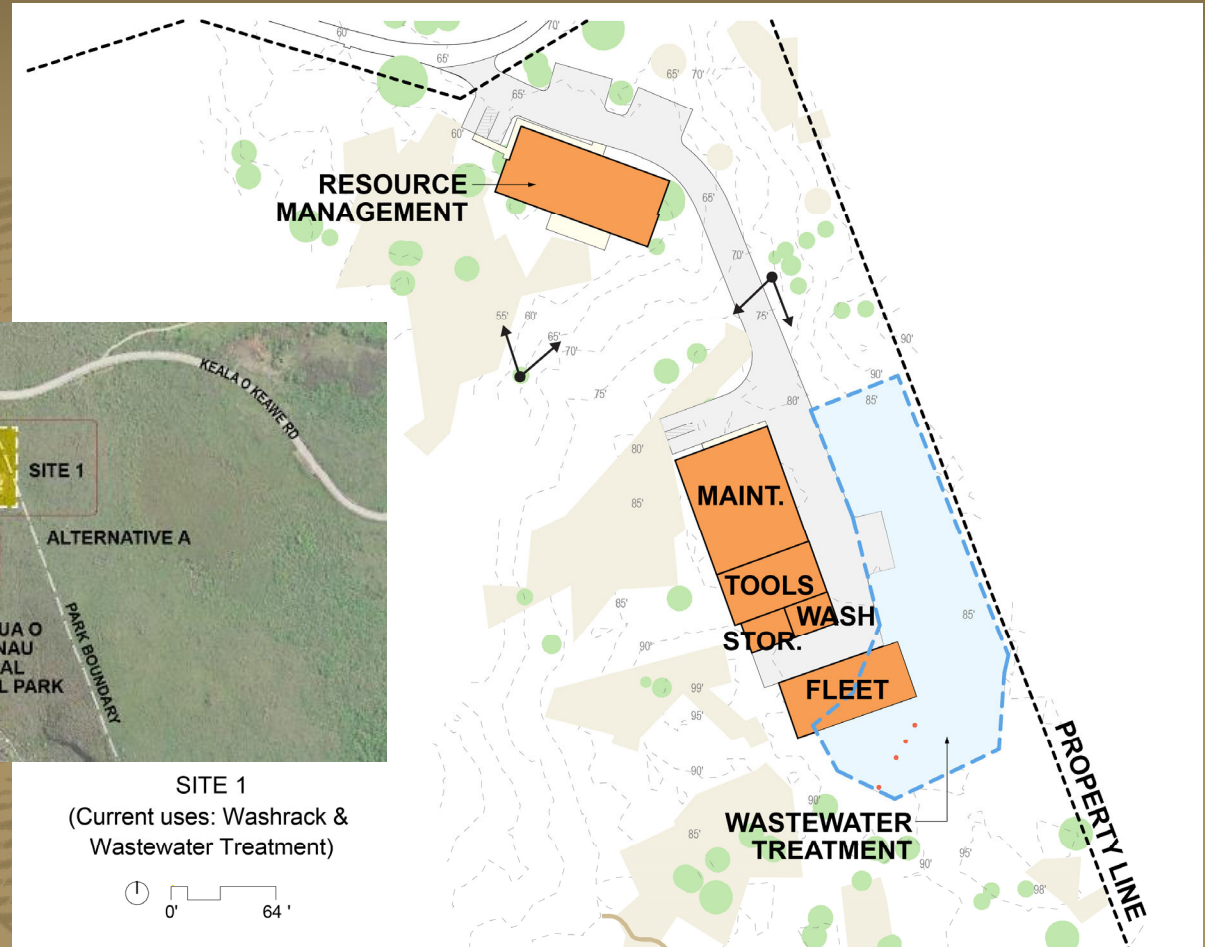
- Within the main Park boundary in an existing maintenance/storage area not typically utilized by the public.
- Maintains physical security presence (Park assets & fleet are located onsite).
- Maintenance & operations staff avoid travel on public roads.
- Requires use of “Site 3” within Park for material storage.
- Requires use of an access road on privately-owned land.



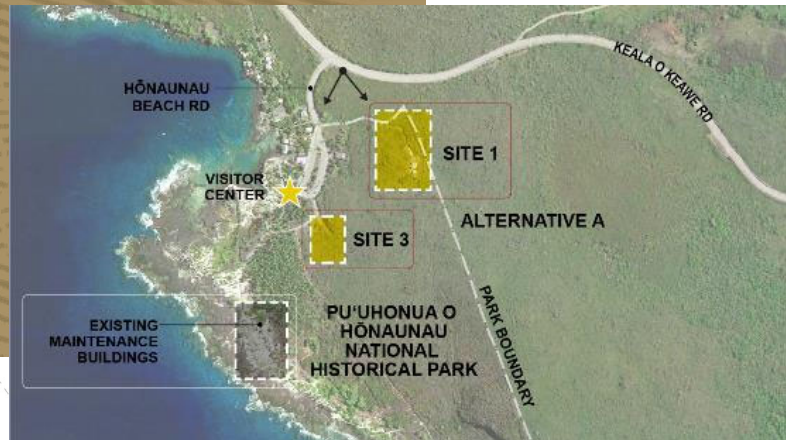
# ALTERNATIVE A (MAKAI): SITES 1 + 3



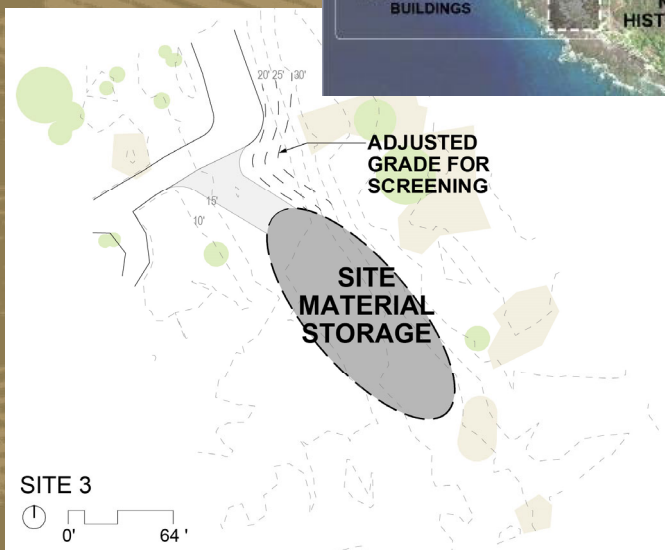
*Resource Management Building*



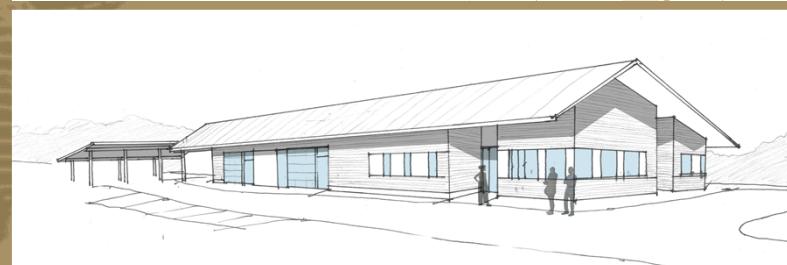
*SITE 1*



*SITE 3*



*SITE 3*



*Maintenance & Fleet Building*



# Alternative A – Visual Simulation



*View of proposed Resource Building at Site 1 looking southeast from Keala o Keawe Road (Hwy 160)*



# ALTERNATIVE B (MAUKA)



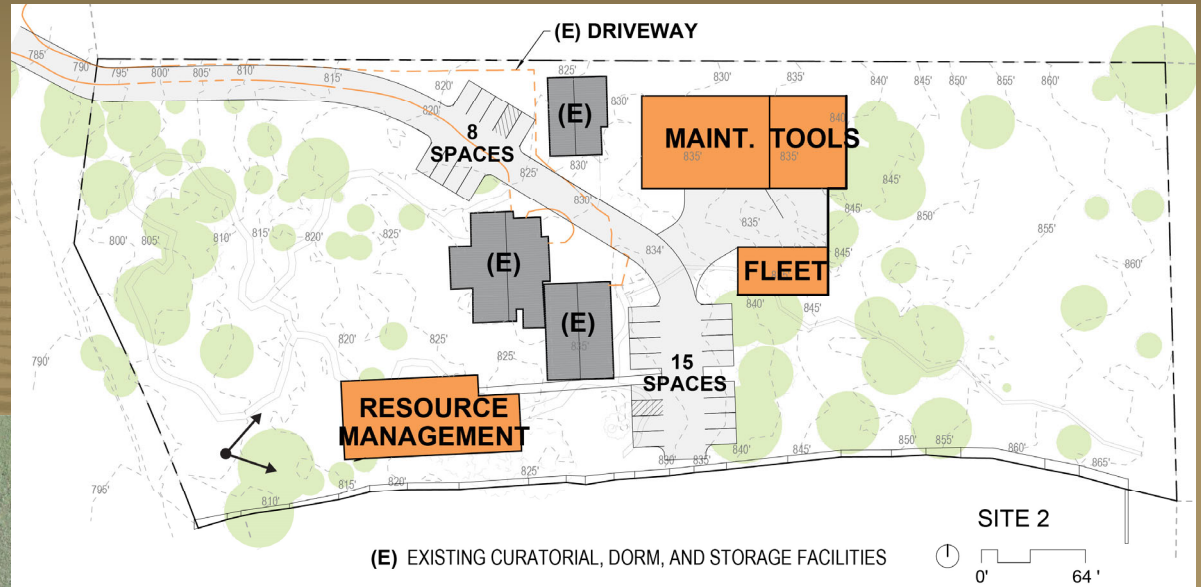
- NPS-owned, developed parcel outside main Park boundary.
- Approx. 3 miles east of Park entrance, with existing infrastructure.
- Minimizes ground disturbance near known archaeological features.
- Requires use of “Site 3” within Park for fleet parking (partial) and maintenance facilities.



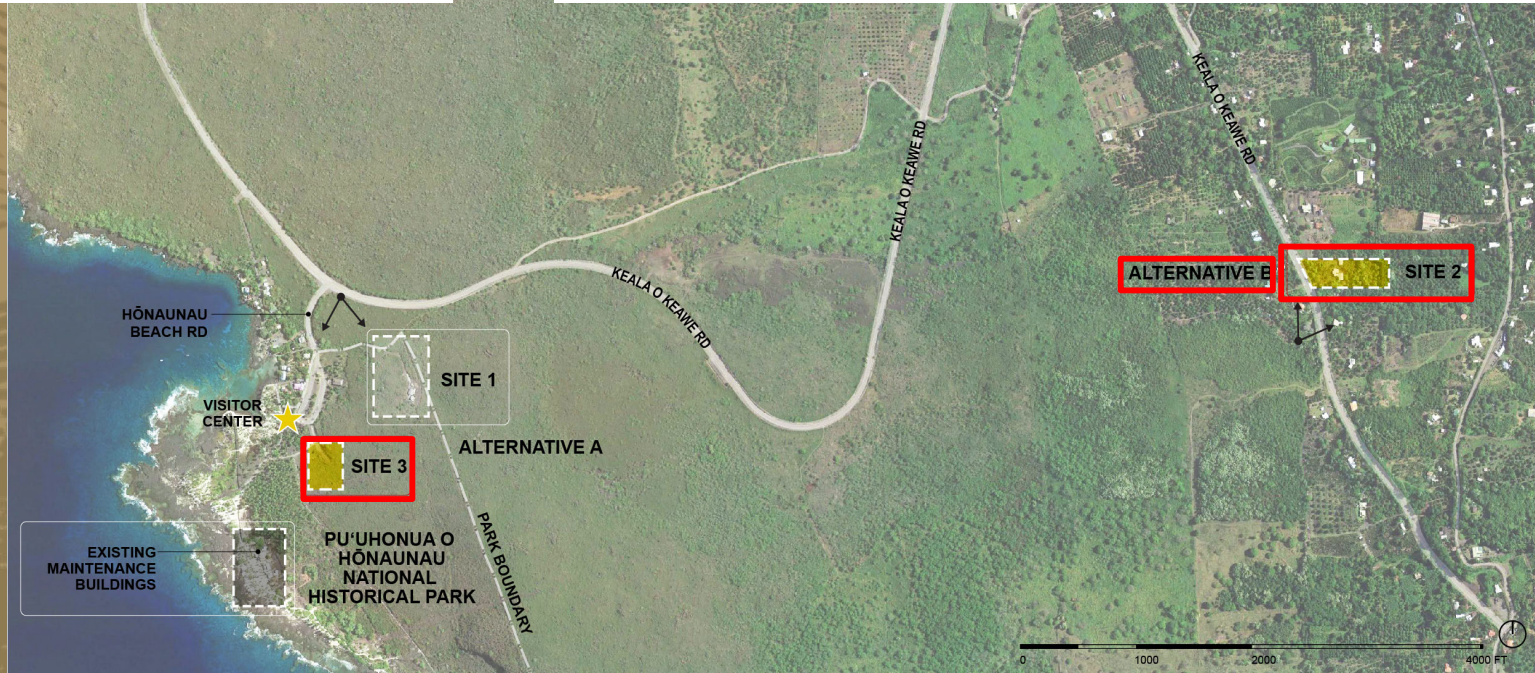
# ALTERNATIVE B (MAUKA): SITES 2 + 3



Site 3



Site 2

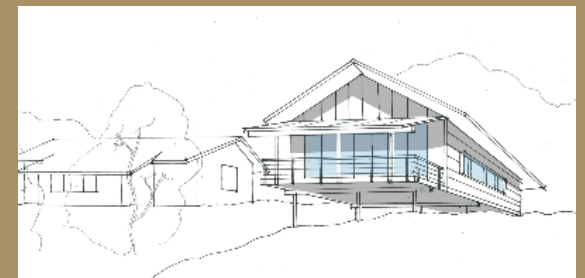




# Alternative B – Visual Simulation



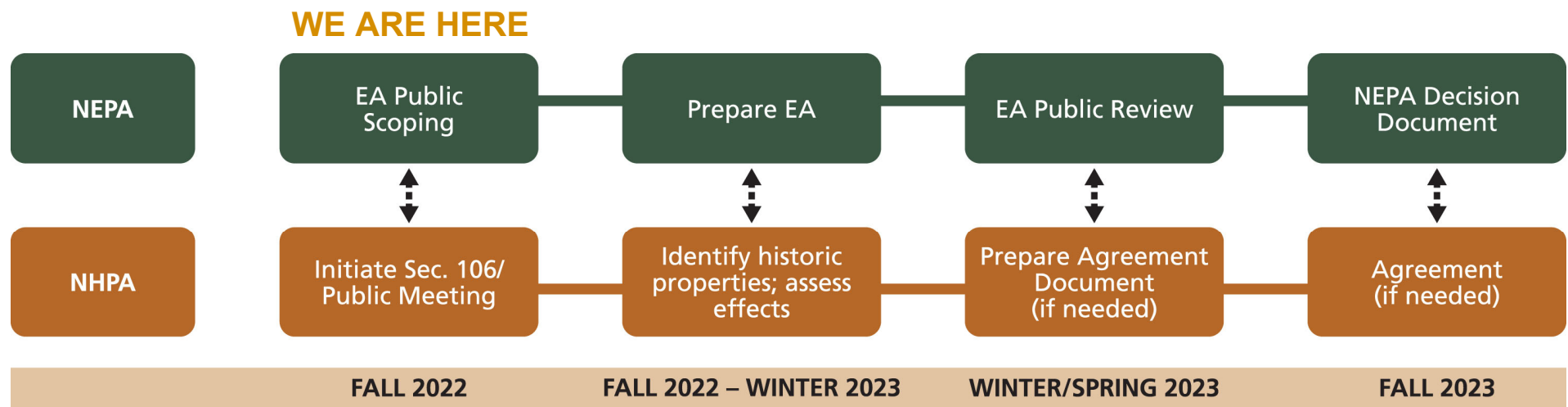
*View of proposed Resource Building at Site 2 looking northeast from Keala o Keawe Road (Hwy 160)*



*Resource Building*



# SCHEDULE



- Posters with the alternatives at Park Visitor Center
- Thursday, November 10, 2022, 6pm- In-Person Meeting at the Park's Amphitheater

# HOW TO PARTICIPATE

- Provide your comments on environmental concerns that should be addressed in the NEPA EA.
- Example of environmental concerns/topics include:
  - Cultural resources
  - Flora/fauna
  - Recreation
- Please enter questions in the chat for the moderator to read.



# HOW TO COMMENT

- Comments must be submitted online or postmarked by **November 27, 2022**
- Submit Online Comments to:  
<https://parkplanning.nps.gov/puhorelocmaint>
- Mail written comments to:  
John Broward, Superintendent  
Pu'uhonua o Hōnaunau NHP  
P.O. Box 129  
Honaunau, HI 96726  
[john\\_broward@nps.gov](mailto:john_broward@nps.gov)



***Please note that your entire comment, including personal identifying information (PII) (e.g., address, phone number, e-mail), may be made publicly available at any time. You may ask us to withhold your PII from public disclosure, but we cannot guarantee that we will be able to do so.***