

PUBLIC SCOPING AND INPUT

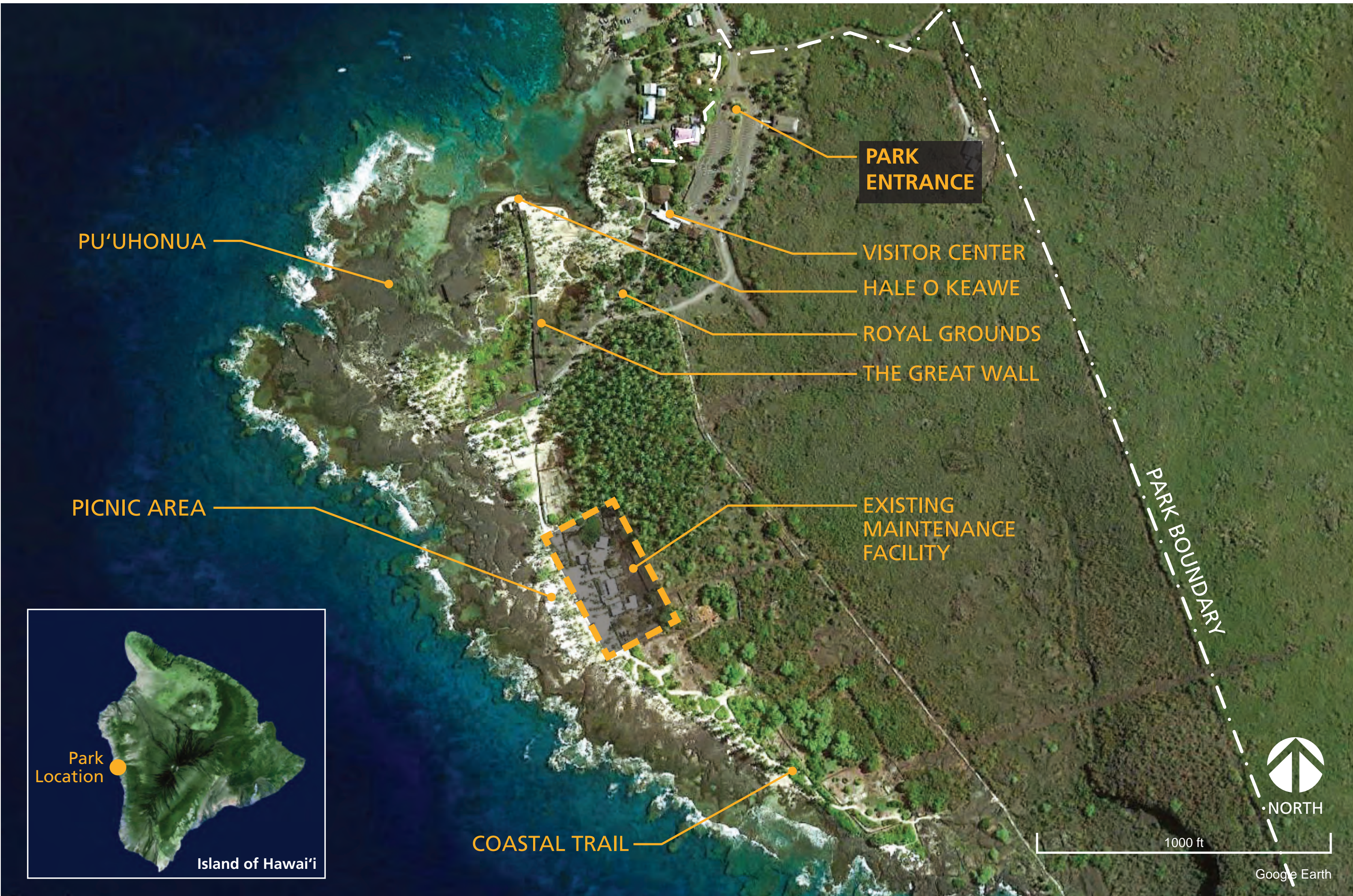
BACKGROUND

The existing maintenance facilities were built in the 1960s and intended at the time to serve as temporary facilities. Since their original construction the Park has consistently recognized the need for these structures to be replaced and relocated. They currently occupy a location known to contain cultural resources and are a visual intrusion on the landscape. Their presence near the coastline also puts them at risk from coastal hazards such as storm surge, tsunami, and sea level rise. In addition, the facilities are outdated and do not meet current standards.

PROJECT PURPOSE AND NEED

- Provide safe, modern, functional facilities for Park maintenance and resource management operations in a more suitable location.
- Improve the Park experience by removing “temporary” buildings from the cultural landscape.
- Reduce the risks of coastal hazards and sea level rise by relocating away from the coast.
- Without the project, Park maintenance and resource management staff would continue to operate in substandard facilities subjected to coastal hazards. The facilities would continue to adversely affect the cultural landscape and park administration.

LOCATION MAP



Existing outdated facilities (2021–2022)

SCOPING is an early and open process for determining the range of issues to be addressed in the NEPA EA and for identifying issues related to the proposed action (i.e., project).

EXAMPLE ENVIRONMENTAL ISSUES that may be considered in the EA: cultural resources, flora/fauna, recreation, socioeconomics, traffic, views, water quality.

Are there other environmental resources or issues that the EA should consider?

HOW TO COMMENT
Comments must be submitted online or postmarked by **November 27, 2022** to receive consideration in the EA.

Submit Online Comments to:
<https://parkplanning.nps.gov/puhorelocmaint>

Mail Written Comments to:
John Broward, Superintendent
Pu'uhonua o Hōnaunau NHP
P.O. Box 129
Honaunau, HI 96726

or Email:
john_broward@nps.gov

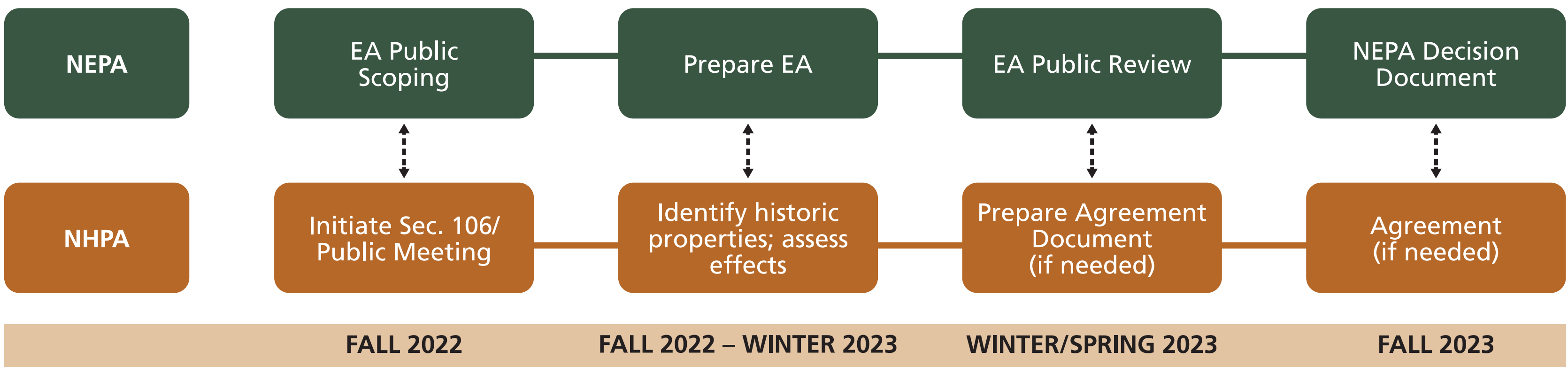


<https://parkplanning.nps.gov/puhorelocmaint>



Coastal Flooding (2008)

SCHEDULE



ALTERNATIVE A: MAKAI

**Plans are conceptual; final designs will be developed after the conclusion of the EA.*

BACKGROUND

During the pre-design phase of this project, multiple sites and configurations were evaluated based on:

- Minimizing impacts to cultural and natural resources.
- Functional efficiency and security.
- Cost and feasibility of construction and maintenance.
- Improving the visitor experience

Two alternatives were identified as best meeting project objectives and are being evaluated in an Environmental Assessment (EA).

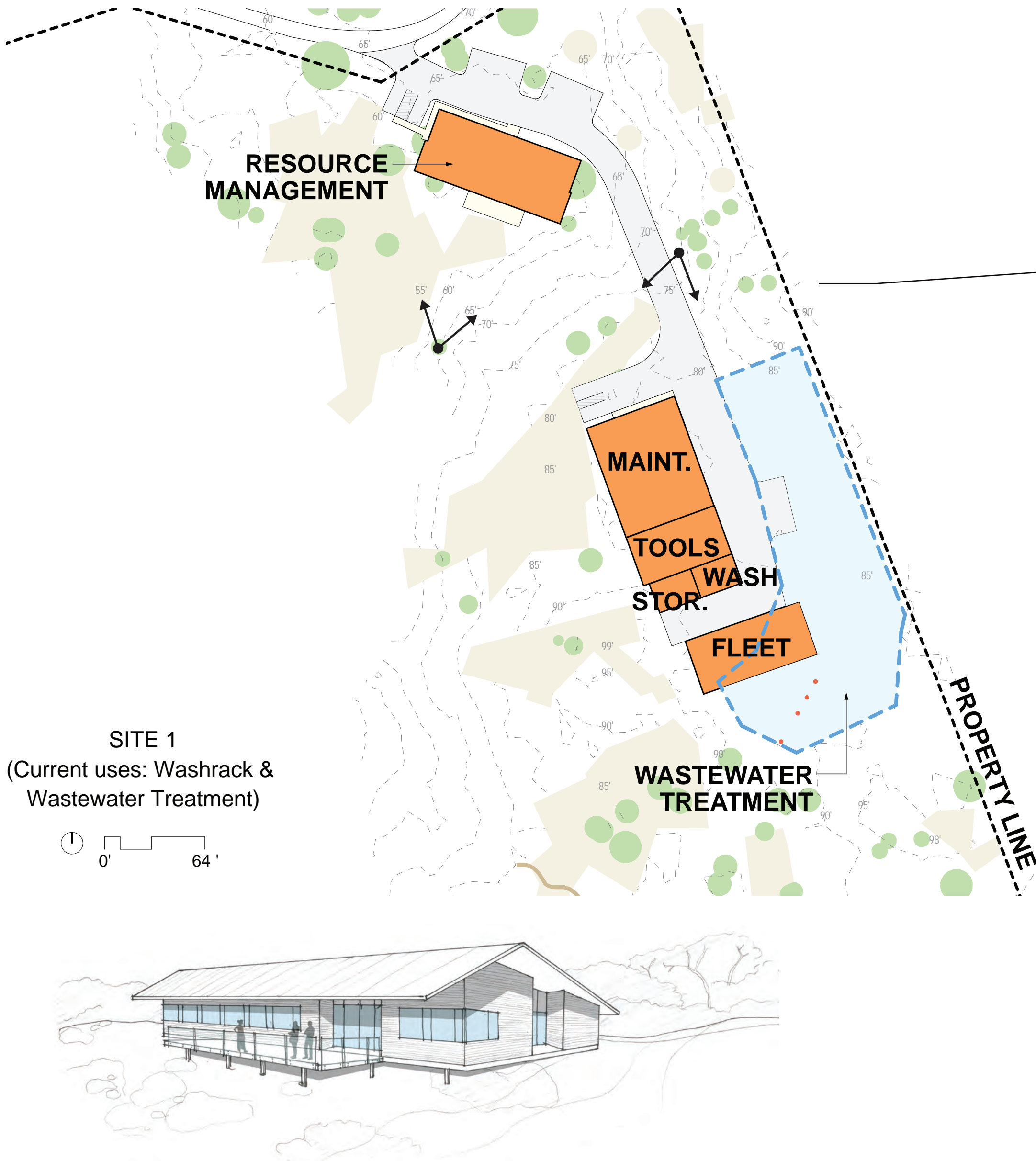
ALTERNATIVE A: MAKAI SITE

- Places all Maintenance and Resources Management facilities at Site 1 in the northeast corner of the park. This Site is accessed via a privately-owned road.
- Site 3 would be used for materials storage (e.g., gravel, crushed coral fill, compost).

The National Environmental Policy Act of 1969 (NEPA) is a federal policy for protecting the environment, with the goal of *ensuring informed decision-making*. Federal agencies must:

- Analyze the environmental impacts of federal actions.
- Engage the public in the decision-making process.

This is done by preparing an **Environmental Assessment (EA)**.

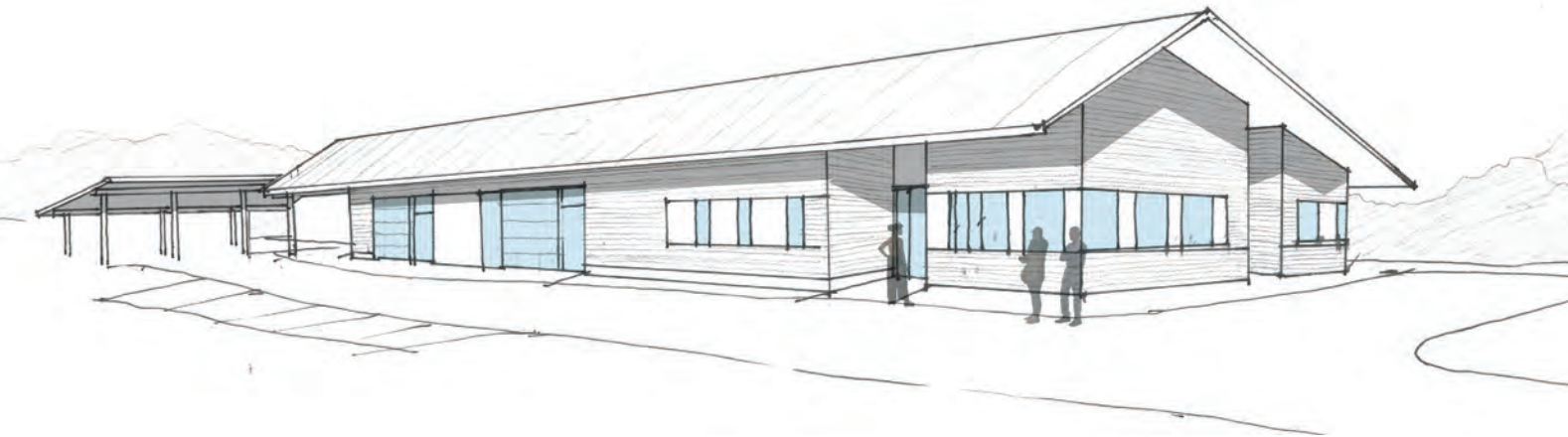
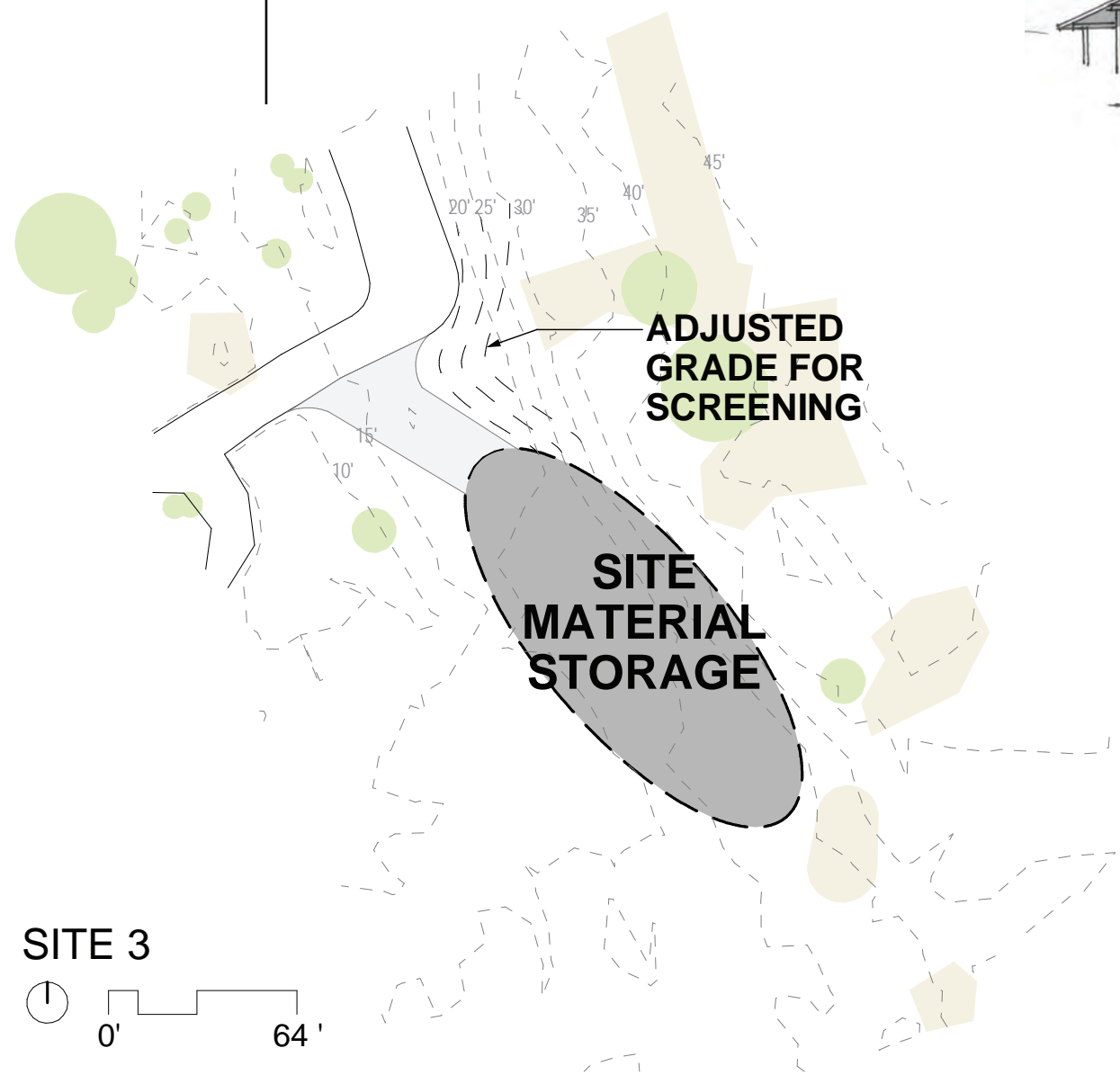


Resource Building looking northeast at Site 1

MAKAI ALTERNATIVE VISUAL SIMULATION



Alternative A (Makai) – Site 1 looking south from Keala o Keawe Road.



Maintenance and Fleet looking southwest at Site 1

HOW TO COMMENT
Comments must be submitted online or postmarked by **November 27, 2022** to receive consideration in the EA.

Submit Online Comments to:
<https://parkplanning.nps.gov/puhorelocmaint>

Mail Written Comments to:
John Broward, Superintendent
Pu’uhonua o Hōnaunau NHP
P.O. Box 129
Honaunau, HI 96726

or Email:
john_broward@nps.gov



<https://parkplanning.nps.gov/puhorelocmaint>

ALTERNATIVE B: MAUKA

**Plans are conceptual; final designs will be developed after the conclusion of the EA.*

BACKGROUND

During the pre-design phase of this project, multiple sites and configurations were evaluated based on:

- Minimizing impacts to cultural and natural resources.
- Functional efficiency and security.
- Cost and feasibility of construction and maintenance.
- Improving the visitor experience

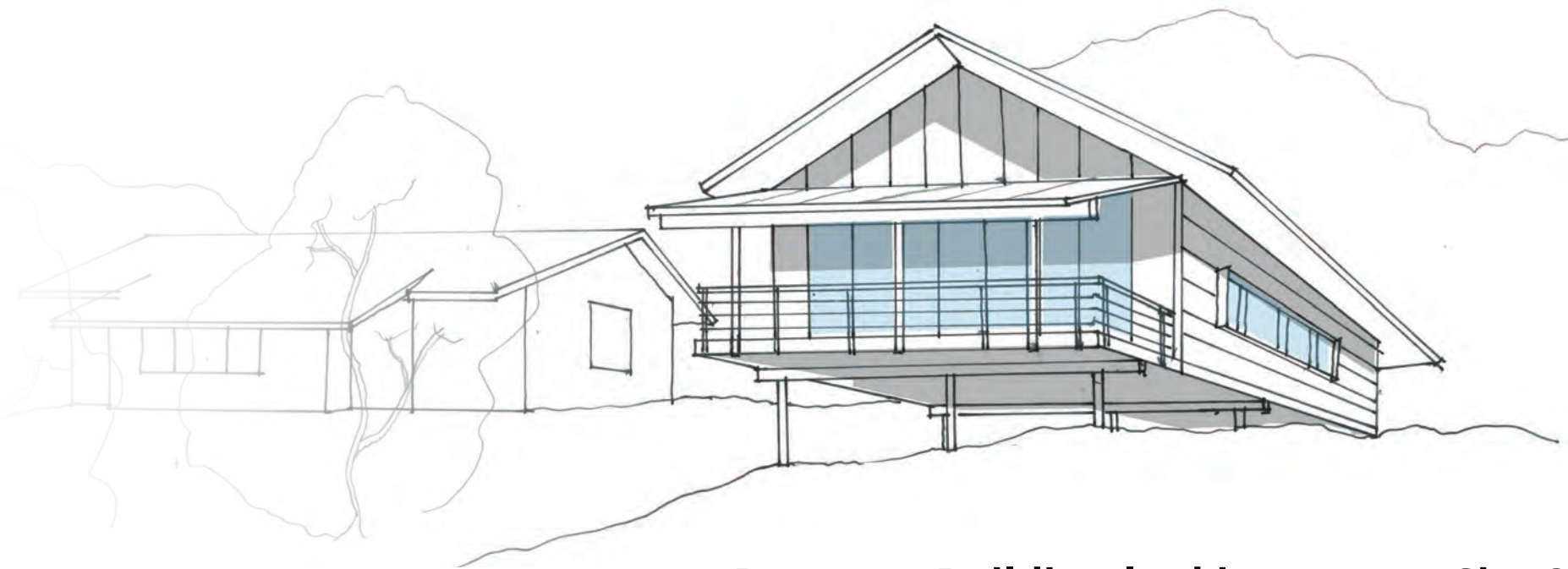
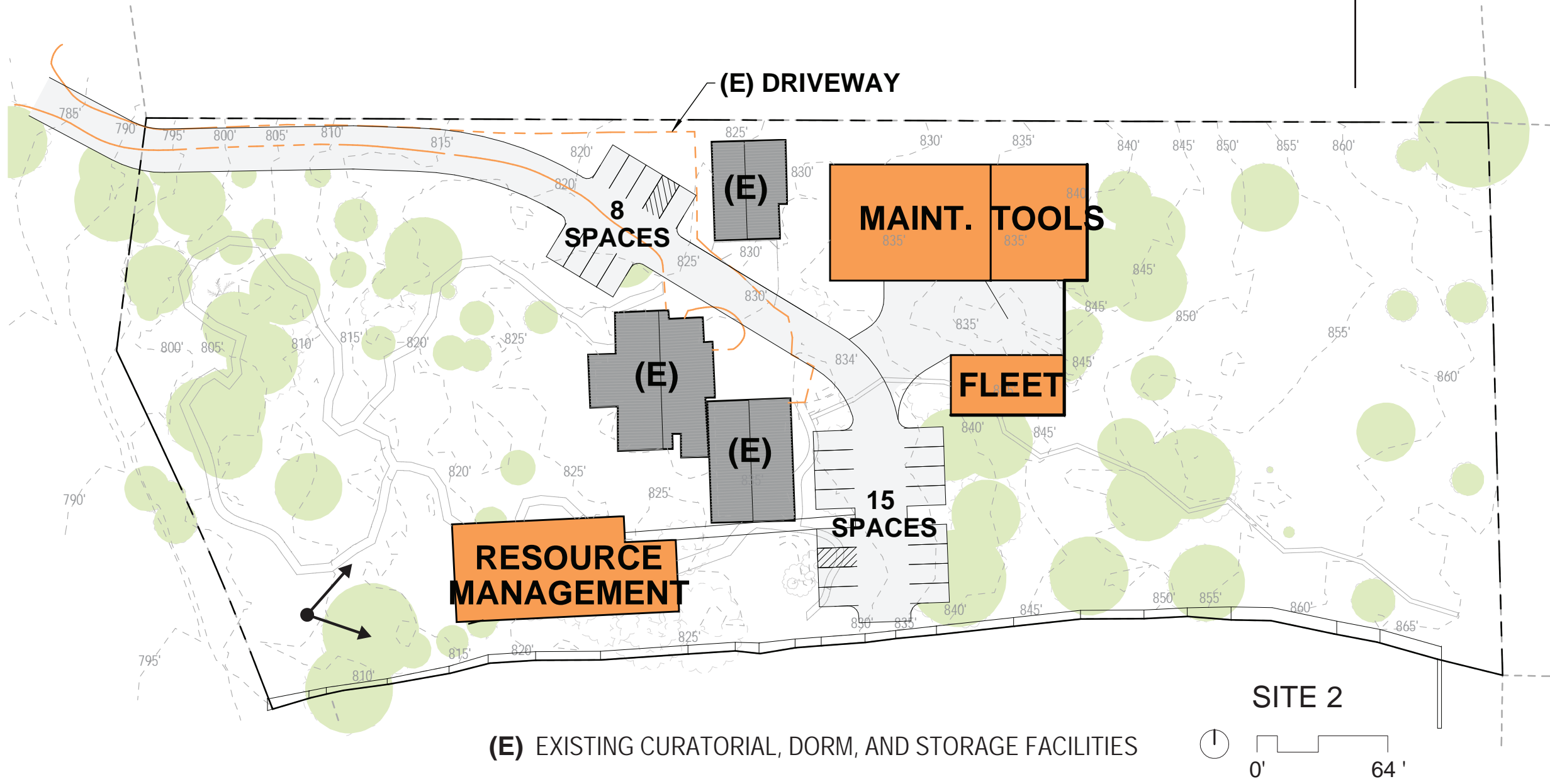
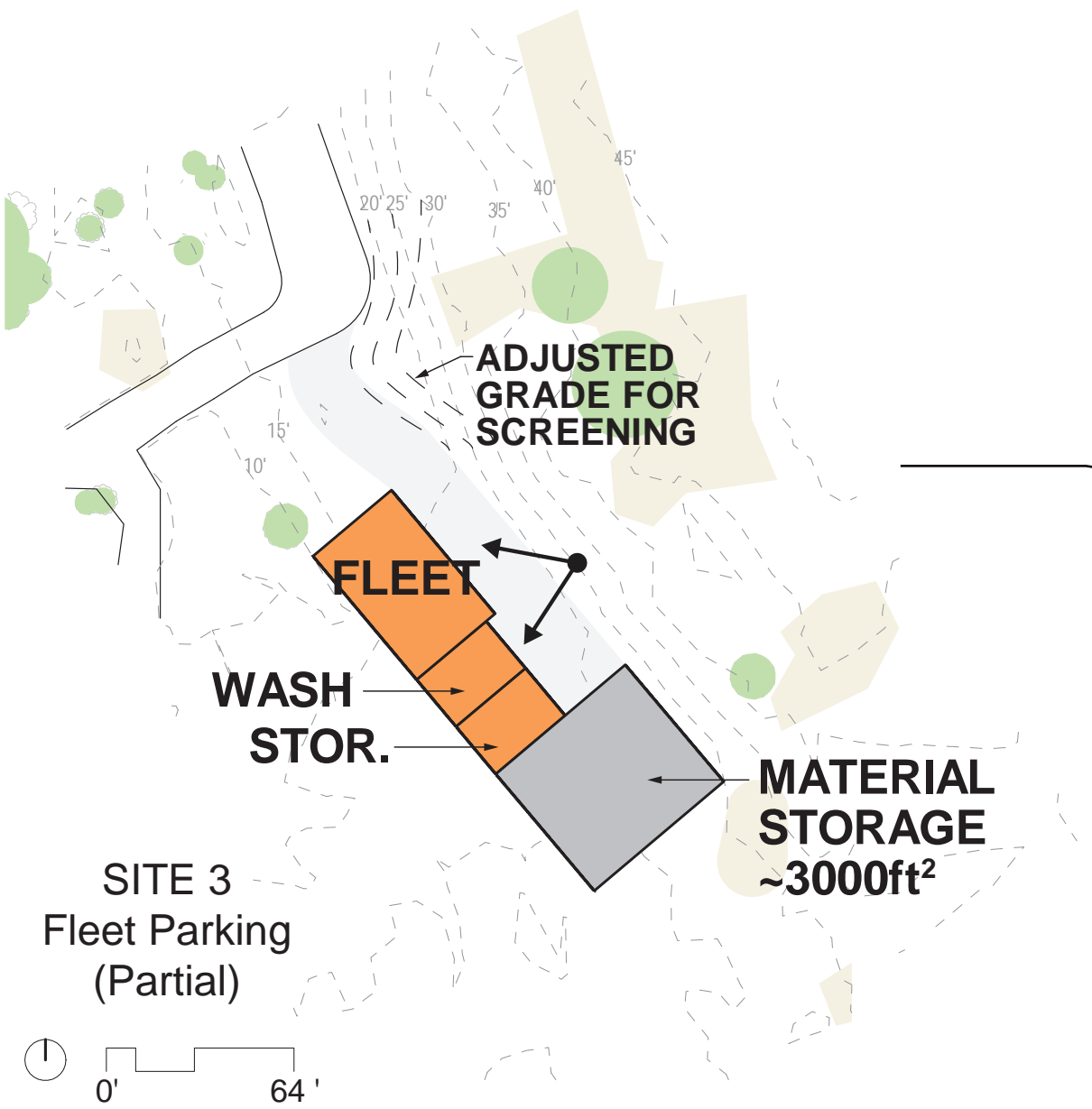
Two alternatives were identified as best meeting project objectives and are being evaluated in an Environmental Assessment (EA).

ALTERNATIVE B: MAUKA SITE

- Places most Maintenance facilities and all Resources Management facilities at Site 2, an NPS-owned parcel on Keala o Keawe Road approximately 3 miles east of the main park.
- Site 3 would be used for partial fleet and other storage as well as materials storage (e.g., gravel, crushed coral fill, compost).

The National Historic Preservation Act of 1966 (NHPA) established a process that requires federal agencies to consider the effects of projects they carry out on historic properties. Under Section 106 of the NHPA agencies must:

- Consider and determine the direct and indirect effects of a proposed undertaking on historic properties (historic or ancient sites included in or eligible for inclusion in the National Register of Historic Places).
- Consult with State Historic Preservation Officers, Native Hawaiian Organizations, and other consulting parties.
- Avoid, resolve, or mitigate adverse effects to historic properties.



Resource Building looking east at Site 2

MAUKA ALTERNATIVE VISUAL SIMULATION



Alternative B (Mauka) – Site 2 looking northeast from Keala o Keawe Road (Highway 160).

HOW TO COMMENT
Comments must be submitted online or postmarked by **November 27, 2022** to receive consideration in the EA.

Submit Online Comments to:
<https://parkplanning.nps.gov/puhorelocmaint>

Mail Written Comments to:
John Broward, Superintendent
Pu’uhonua o Hōnaunau NHP
P.O. Box 129
Honaunau, HI 96726

or Email:
john_broward@nps.gov



<https://parkplanning.nps.gov/puhorelocmaint>