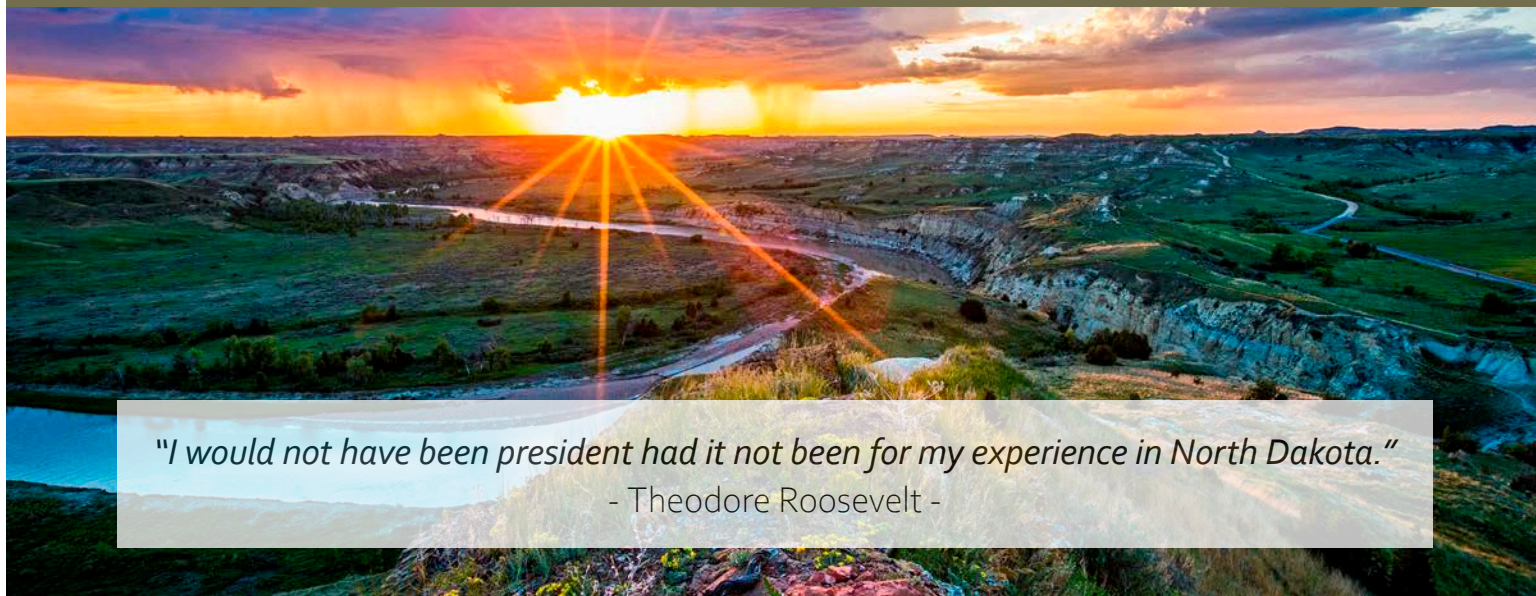




Facility Revitalization Plan & Environmental Assessment Public Review



"I would not have been president had it not been for my experience in North Dakota."
- Theodore Roosevelt -

We invite your comments and input on the Facility Revitalization Plan and Environmental Assessment for Theodore Roosevelt National Park.

Theodore Roosevelt National Park has prepared a Facility Revitalization Plan and Environmental Assessment for developed areas of the park including: Painted Canyon, South Unit in Medora, North Unit, Peaceful Valley Ranch, and the Elkhorn Ranch Unit. Park managers will present long-range planning concepts that will address future facility needs, prioritize infrastructure investments, and leverage partnership opportunities. Public meetings will be held August 23 and 24, 2022. The August 23 meeting will be an online meeting held from 6:00 pm to 7:30 pm (Central). An in-person open house will be held August 24 from 6:30 pm to 8:30 pm (Central) at the Watford City Civic Center.

As one of the most popular tourism destinations in North Dakota, Theodore Roosevelt National Park is poised to become a national hub of Theodore Roosevelt related heritage sites. Development concepts are needed to explore how best to address current park needs and plan for future visitor experience in the greater context of the park's surrounding communities. The Facility Revitalization Plan focuses on sustainable opportunities to improve facilities and operations while making natural and cultural resource preservation a priority. The Environmental Assessment evaluates potential impacts that could occur with implementation of these concepts and details mitigation measures to avoid significant adverse environmental impacts and impairment to natural and cultural resources. With implementation, the Facility Revitalization Plan would provide the foundation for safe, accessible, enhanced, and reliable visitor experience and recreation opportunities over the next thirty years and beyond.

Please Join Us at One of the Following Meetings:

AUGUST 23RD | 6:00 pm - 7:30 pm (Central)

Link to Online Meeting <<https://swca.zoom.us/j/98792662827>>

Participants may also dial in to the online meeting via: 888 475 4499 (Toll Free)

Webinar ID: 987 9266 2827

AUGUST 24TH | 6:30 pm - 8:30 pm (Central)

Open House, Watford City Civic Center, 213 2nd St NE, Watford City, ND 58854

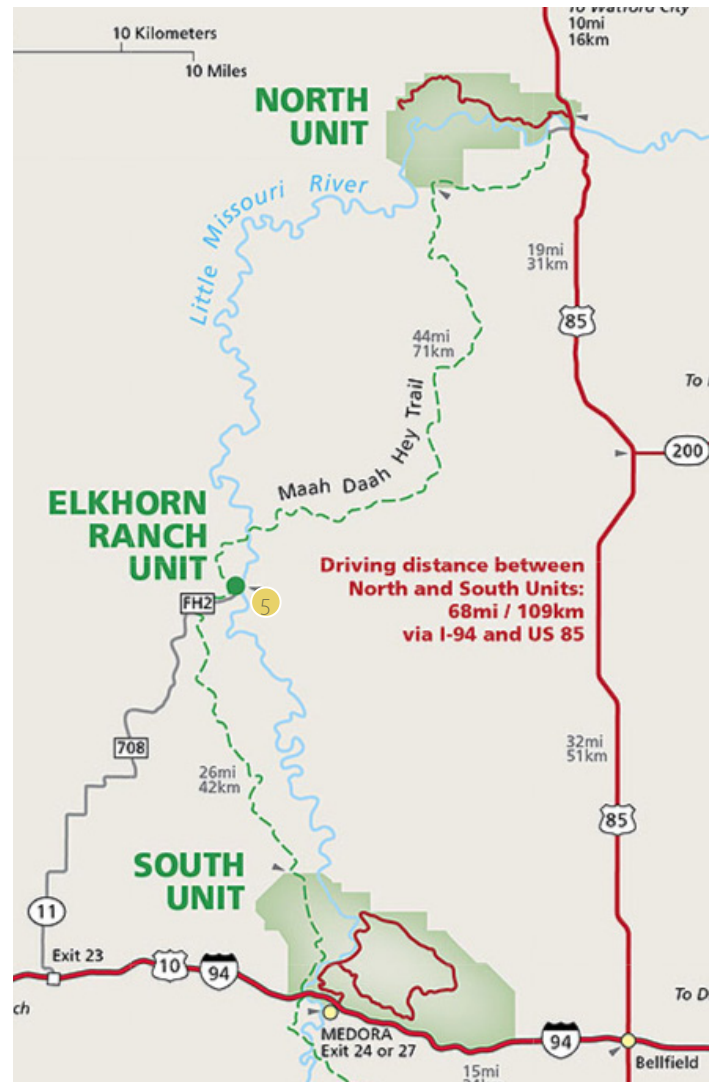
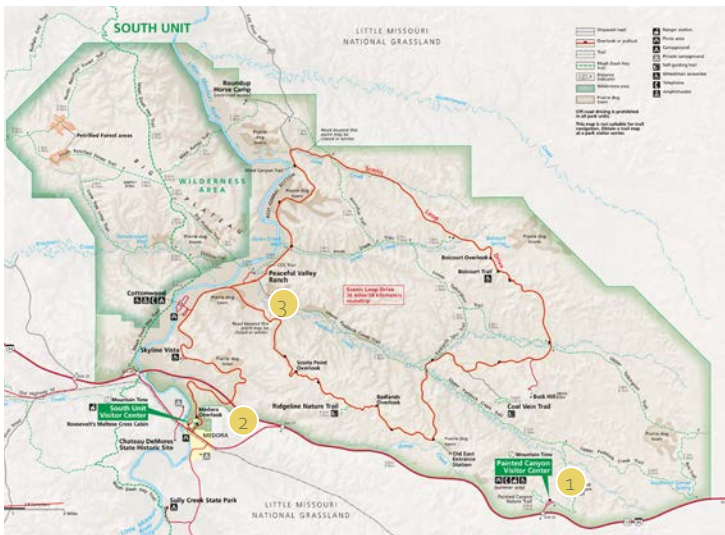
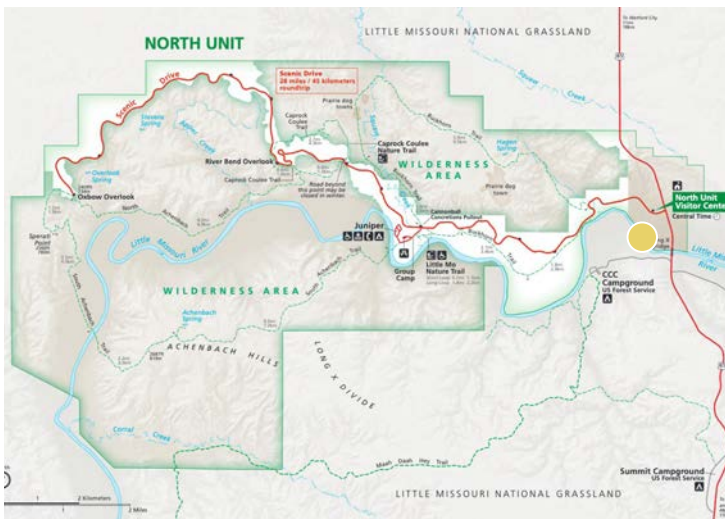
Presentation at 6:45 pm



Park Vision

Theodore Roosevelt National Park is poised to become the hub of Theodore Roosevelt associated heritage sites. Together the park and its partners will expand the preservation, understanding, and promotion of President Theodore Roosevelt's story, philosophy, and conservation legacy.

Study Area Context



Plan Purpose

- Identify facility investment needs in each developed area
- Leverage an unprecedented opportunity for partner engagement
- Provide a prioritized strategic implementation plan to address aging infrastructure and deferred maintenance

Study Locations

1. Painted Canyon
2. Medora Area
3. Peaceful Valley
4. North Unit
5. Elkhorn Ranch



Parkwide Issues and Needs

Housing:

Provide sufficient, diverse, and modernized park housing with a variety of prototype units that will accommodate staffing changes and support adequate recruitment and retention

Aging Utilities and Transportation/ Circulation Systems:

- Update utility systems to protect park resources, support sustainability, and establish resiliency
- Increase capacity of utility and transportation systems for visitor use, year-round services, safer travel, and quality of experience
- Improved circulation and parking for efficient passage of modern sized vehicles

Maintenance/ Administration:

- Establish right-sized workspaces required for all job functions and in compliance with federal regulations
- Ensure staff have safe, accessible, comfortable, modern workspaces

Visitor Orientation and Services:

Provide visitor facilities that incorporate safety, accessibility, sustainability, and universal design to accommodate projected visitation growth and capture uncollected revenue

Elkhorn Ranch

VISION - To preserve the Cradle of Conservation, a unique sense of place offered by the land that healed Theodore Roosevelt's heart after a period of profound grief and later inspired his conservation legacy. This land continues to inspire visitors and conservation professionals today.

NEEDS

- Archaeological site preservation and interpretation
- Trailhead area improvements

PRIORITIES

- Enhance interpretive opportunities to provide inspiration and conservation ethic
- Improve visitor facilities protecting the historic resource
- Add additional signage to the site

PROPOSED ACTION ALTERNATIVE





Painted Canyon

VISION - Transform Painted Canyon Visitor Center into a year-round, multi-agency information facility, gateway to western national parks, and wildfire response center. This vision could add a fee collection point and enhance recreational access for picnicking, wildlife viewing, hiking, and horseback riding.

NEEDS

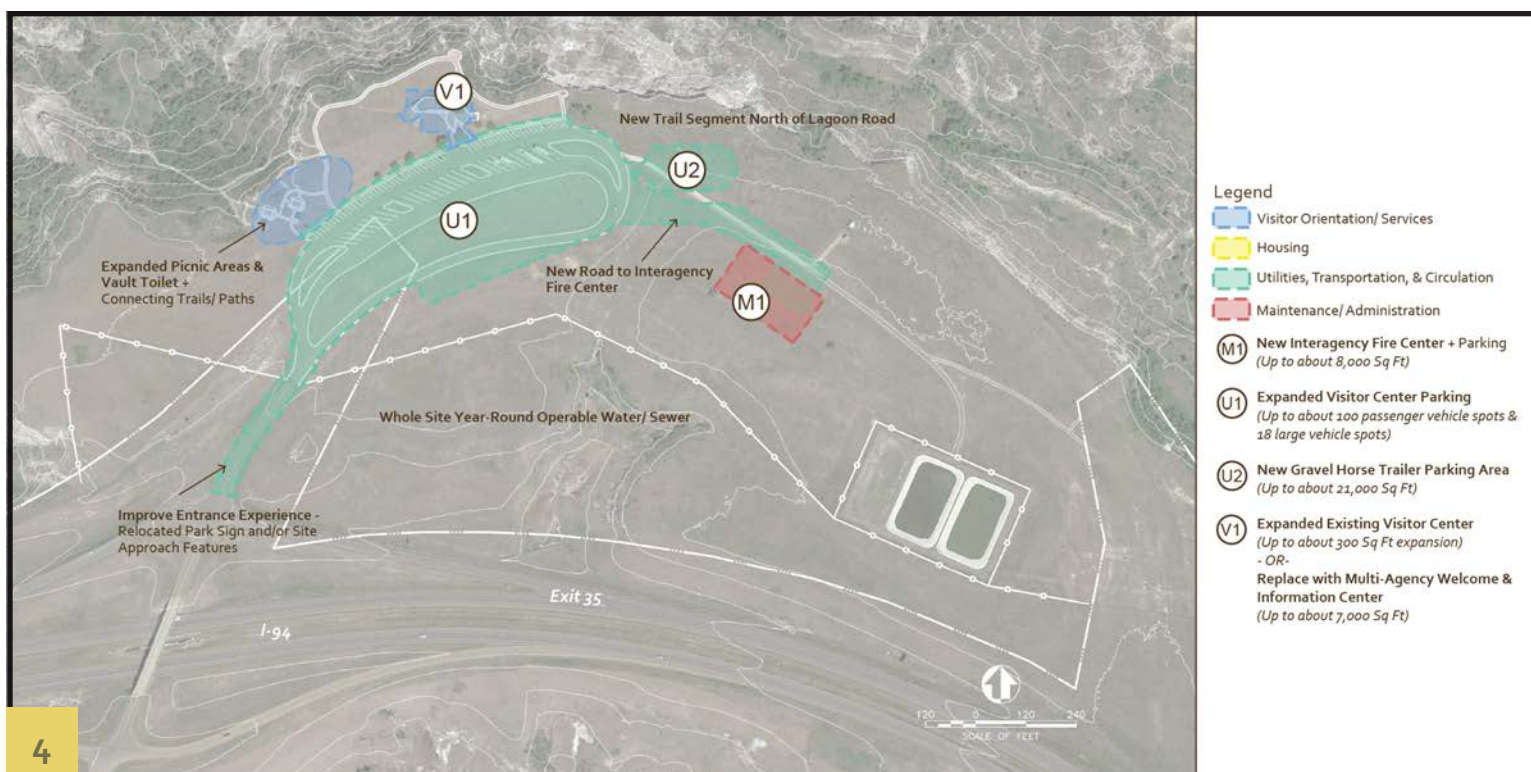
- Year-round operable water/ sewer system
- Centralized fire response center for National Park Service, USDA Forest Service, and State of North Dakota
- A feeling of connection to the park and the National Park Service for visitors
- Fee collection in current non-fee area
- Enhanced recreational opportunities: hiking, horseback riding, picnicking, experiencing the scenic vista overlook

The level of investment and development would depend on funding availability, future reviews, and the extent to which partners are available.

PRIORITIES

- Install utility infrastructure including a year-round operable water and wastewater system
- Partner with multiple agencies for an effective, centralized fire management and response facility
- Increase recreational access via improved trailheads, horse trailer parking, a picnic area, and interpretative areas
- Transform aging visitor center into an enhanced visitor experience that provides orientation to western North Dakota tourism sites, recreational activities, and heritage areas

PROPOSED ACTION ALTERNATIVE





Medora Area

VISION - Revitalize and modernize visitor and administrative facilities to support the future of Theodore Roosevelt's conservation legacy and complement the nearby Theodore Roosevelt Presidential Library and town of Medora. The vision also includes a greater web of visitor experience that will serve future visitors by fostering new partnership opportunities and efficient park operations.

NEEDS

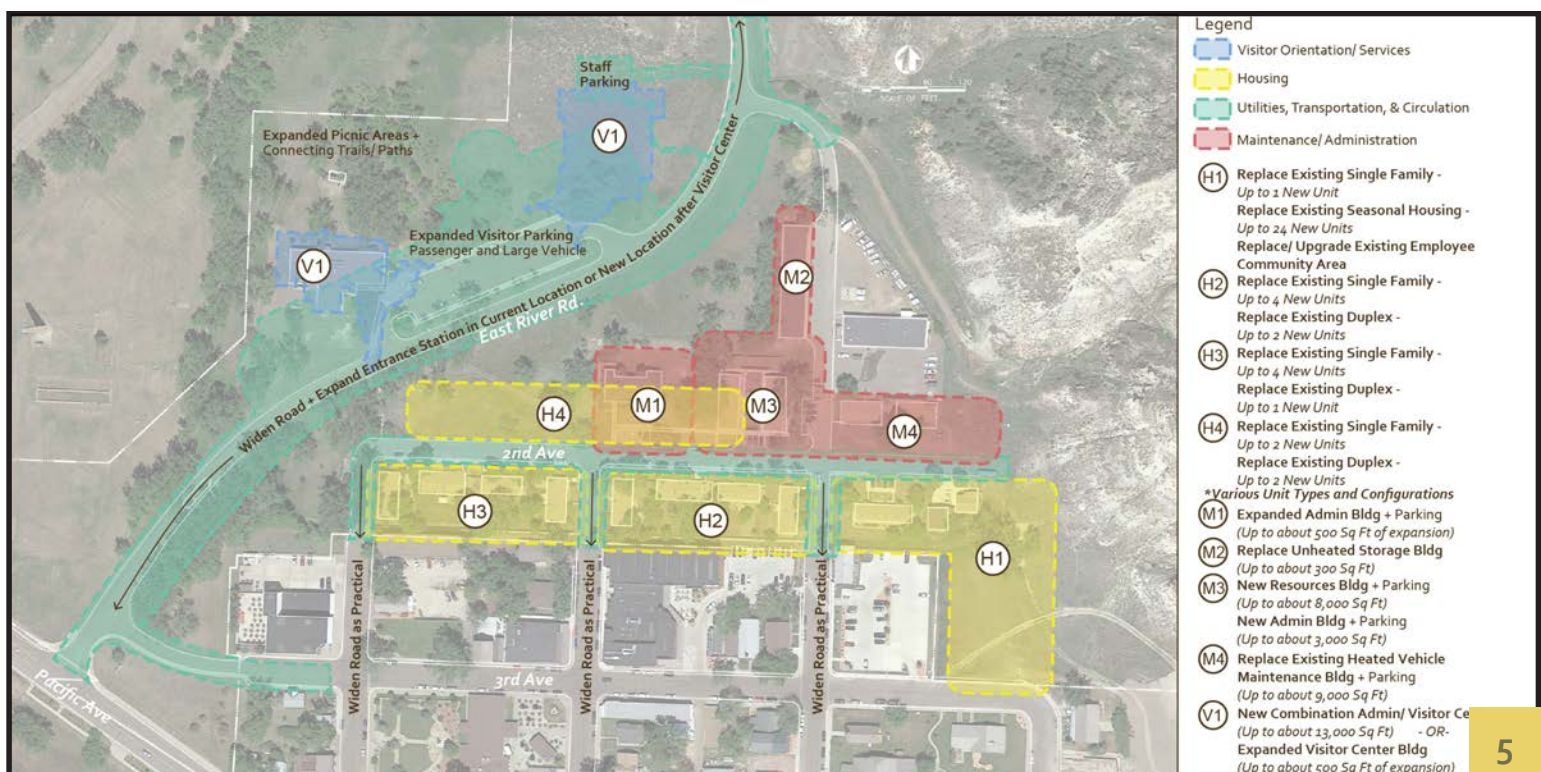
- Additional housing quantity and unit type
- Maintenance buildings adequate to service and protect park equipment
- Staff workspaces that meet minimum requirements for size, quantity, and safety
- Visitor experience can be enhanced by fostering partner support

The level of investment and development would depend on funding availability, future reviews, and the extent to which partners are available.

PRIORITIES

- Provide housing variety and additional quantity to accommodate staffing changes and promote recruitment, retention and diversity
- Expand entrance station capacity to accommodate increasing visitation, provide a safe entry experience, and eliminate traffic congestion stemming from park traffic
- Increase parking and improve circulation for modern vehicles
- Improve visitor experience with upgraded visitor discovery and orientation center and provide protection for the Maltese Cross Cabin
- Upgrade maintenance facilities to adequately provide services, protect equipment investment, and establish safe, efficient work areas
- Create sufficient workspaces required for all administrative functions

PROPOSED ACTION ALTERNATIVE





Peaceful Valley Ranch

VISION - Adaptive reuse of the newly rehabilitated Peaceful Valley Ranch for proposed environmental education activities.

NEEDS

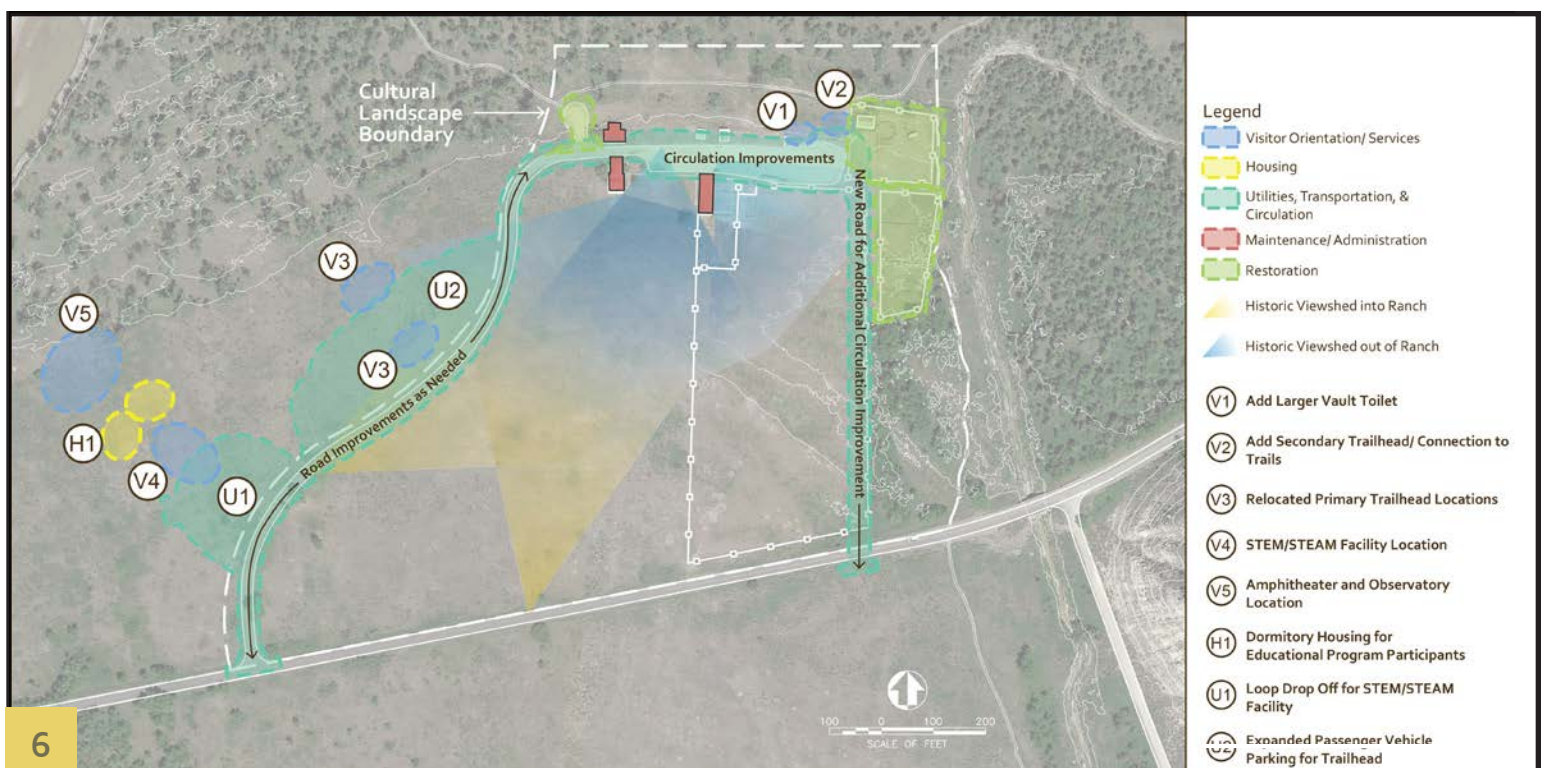
- Increased sewer capacity for year-round use
- Environmental education programming and facilities
- Existing and proposed facilities need to be compatible with the cultural landscape recommendations to preserve and protect this historic district

The level of investment and development would depend on funding availability, future reviews, and the extent to which partners are available.

PRIORITIES

- Upgrading infrastructure in a way compatible with the historic structures and the cultural landscape, accommodating increased visitation and use
- Improved safety for parking and vehicle circulation, enhancing navigation and access in the area
- Expansion of environmental education programming opportunities coordinate with multiple partners

PROPOSED ACTION ALTERNATIVE





North Unit

VISION - Celebrate wilderness, outdoor recreation, and growing municipalities and their diverse residents while implementing Theodore Roosevelt's legacy of conservation with unique partnerships that model novel resource conservation methods

NEEDS

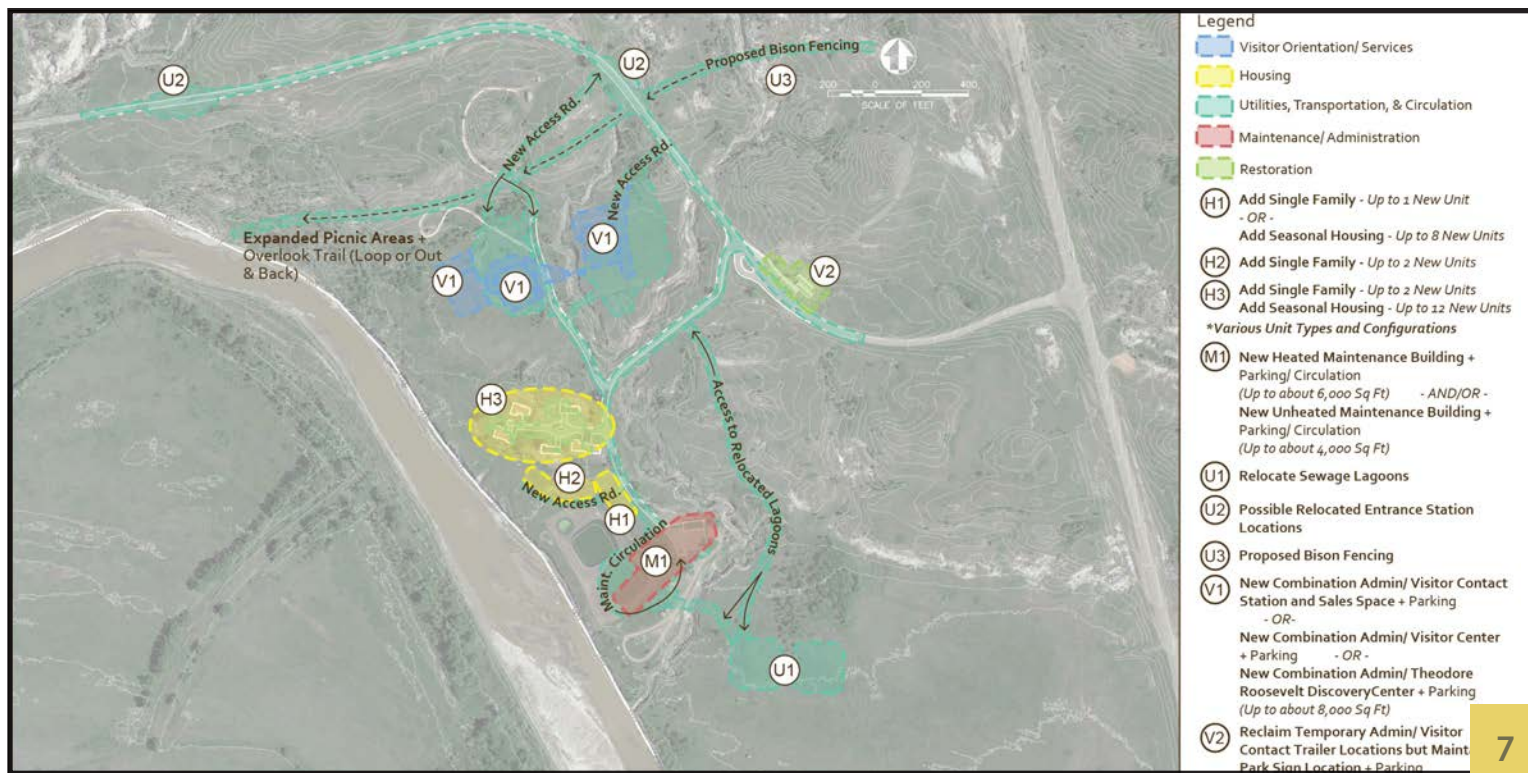
- Relocation of aging sewage lagoons threatened by the Little Missouri River
- Additional housing quantity and unit type
- Maintenance buildings adequate to service and protect park equipment
- An orientation and administration office facility in a stable location not affected by natural processes (erosion, landslide, coal fire)
- Improved visitor experience to leverage partner support

The level of investment and development would depend on funding availability, future reviews, and the extent to which partners are available.

PRIORITIES

- Relocate sewage facilities threatened by the Little Missouri River for sustainability and effective operations
- Replace and relocate failed visitor information/orientation and administrative office facility to a stable location not affected by natural processes (erosion, landslide, coal fire) and suitable for visitor and staffing needs
- Relocate entrance station for visitor safety, enhanced circulation, and efficient fee collection
- Provide appropriate quantity and variety of housing to accommodate growing staffing needs
- Establish appropriately sized and winterized maintenance facilities adequate to service and protect park equipment

PROPOSED ACTION ALTERNATIVE





National Park Service
U.S. Department of the Interior
Theodore Roosevelt National Park
Public Engagement Notice | Summer 2022

PRSR STD
ECRWSS
U.S. POSTAGE
PAID
EDDM RETAIL

Postal Customer



Submitting Comments on the Facility Revitalization Plan & Environmental Assessment

Your Opinion is Important to Us!

PLEASE SUBMIT COMMENTS BY SEPTEMBER 14, 2022
AT THE NPS PLANNING WEBSITE ONLINE:

https://parkplanning.nps.gov/THROFRP_EA

OR IN WRITING TO:

Superintendent, Theodore Roosevelt National Park
PO Box 7, Medora, ND 58645