

Project Description: DC Water Potomac Interceptor Rehabilitation Project

In partnership with the National Park Service (NPS), the District of Columbia Water and Sewer Authority (DC Water) is proposing to rehabilitate 2.4 discontinuous miles of the Potomac Interceptor (PI) sanitary sewer system located adjacent to the Clara Barton Parkway and within the Chesapeake and Ohio Canal National Historical Park (C&O Canal NHP) between Lock 14 and the Chain Bridge (Figure 01). This project will take place on land administered by the C&O Canal NHP and the George Washington Memorial Parkway (GWMP).

Need For Action

The PI was constructed in the 1960s and DC Water is the current party responsible for its operation and maintenance. The PI sanitary sewer system conveys an average of approximately 60 million gallons per day of wastewater from Washington Dulles International Airport and local communities to the Potomac Pumping Station in DC.

The PI segments to be rehabilitated are constructed of reinforced concrete pipe (RCP) ranging from 72 to 96 inches in diameter. Over time, if not renewed, RCP sewer pipes are susceptible to corrosion and deterioration. Pipeline inspection via closed-circuit television and other methods has shown that multiple sections of RCP and the associated manholes are deteriorating. Extensive RCP deterioration could result in a catastrophic failure leading to the release of raw sewage to the environment.

General Study Area Description

DC Water is prioritizing the rehabilitation of three PI segments (Figure 01):

- The LZ09 segment is in Montgomery County, MD and includes the rehabilitation of approximately 3,500 ft of pipeline. This segment starts near the southeast corner of the Carderock Division of the Naval Surface Warfare Center and ends near the Lock 10 parking lot (Figures 02A through 02D).
- The LZ03B segment is in Montgomery County, MD and includes the rehabilitation of approximately 6,500 ft of the PI, from the Lock 10 parking lot to an area near the junction of Cabin John Parkway and Clara Barton Parkway (Figures 03A through 03G).
- The LZ03C segment is in Montgomery County, MD and Washington, DC and includes the rehabilitation of 3,400 ft of the PI from the Lock 5 parking lot to the Chain Bridge parking lot (Figures 04A through 04D).

These segments are located between the Clara Barton Parkway and the C&O Canal in a dense, second growth forest characterized by oak and hickory species, American sycamore, tulip poplar, cottonwood, black walnut, black locust, American elm, and box elder.

Potential Impacts of Proposed Action

DC Water will work with NPS to identify appropriate rehabilitation methods that avoid, minimize, and mitigate potential environmental impacts that may result from the proposed project. For example, application of a spray-on geopolymer to the inside of the pipe can prevent the need for

large-scale excavation and trenching. Proposed rehabilitation methods may necessitate bypass piping, routed on the ground surface along the parks, to accept existing sewage flow during repairs in addition to the construction and maintenance of new manholes for access. Trees that have grown into and throughout the existing utility right-of-way and in sites of new manholes would need to be removed. Short-term, temporary closures of the towpath may be necessary to safely perform repair work. This project has also been designed to minimize impacts to the Clara Barton Parkway to ensure that traffic flow is facilitated at all times. Public use of parking areas will be maintained during the project.

The rehabilitation of these pipeline segments would occur consecutively. Construction activities would begin on the LZ09 segment and would last for approximately 18 months. Work would then occur on the LZ03B segment which would last for approximately 14 months. Repairs to the LZ03C would then begin, lasting approximately 9 months.

Public Engagement

DC Water and NPS will be preparing an Environmental Assessment (EA) to evaluate the potential environmental impacts from this proposed rehabilitation project in accordance with the National Environmental Policy Act (NEPA). Public participation is vital to the NEPA process and will start with a 14-day public scoping period where the NPS and DC Water will seek public input regarding issues or concerns associated with implementing the project. Feedback received during scoping may be used to inform project design and implementation.

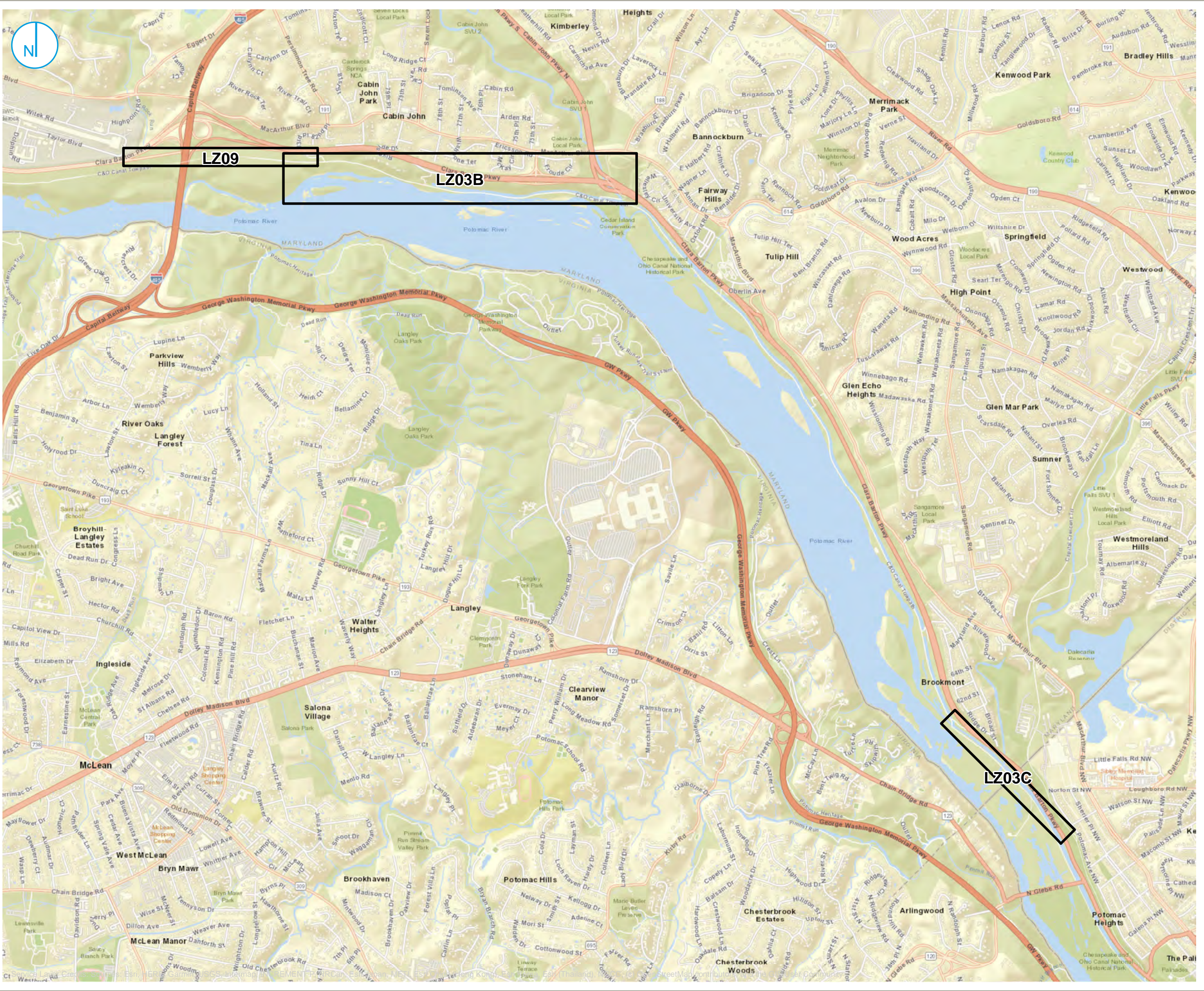
To provide comments, the public is invited to visit the NPS planning website at <https://parkplanning.nps.gov/DCWaterLZ03andLZ09SewerRehab>. Comments must be provided by July 1, 2022. If you prefer to mail your comments, make sure they are post marked by July 1, 2022 to receive consideration. Mail comments to the following address:

Superintendent
ATTN: Potomac Interceptor Rehabilitation Scoping Comments
National Park Service
C&O Canal National Historical Park
142 West Potomac Street
Williamsport, MD 21795

Thank you for your interest and participation in this planning process. We look forward to your comments and appreciate your feedback on the proposed project, which we believe is necessary to extend the life of vital regional infrastructure and to avoid catastrophic impacts to the C&O Canal NHP and the water quality of the Potomac River. If you have questions or need additional information, please contact Christiana Hanson, Chief of Interpretation, at christiana_hanson@nps.gov or 301-491-6265.

List of Figures

Figure 01: Location of Segments to be Rehabilitated
Figures 02A through 02D: LZ09 Rehabilitation Project
Figures 03A through 03G: LZ03B Rehabilitation Project
Figures 04A through 04D: LZ03C Rehabilitation Project



Map Scale: 1:24,000 | Map Center: 77°8'53"W 38°57'10"N

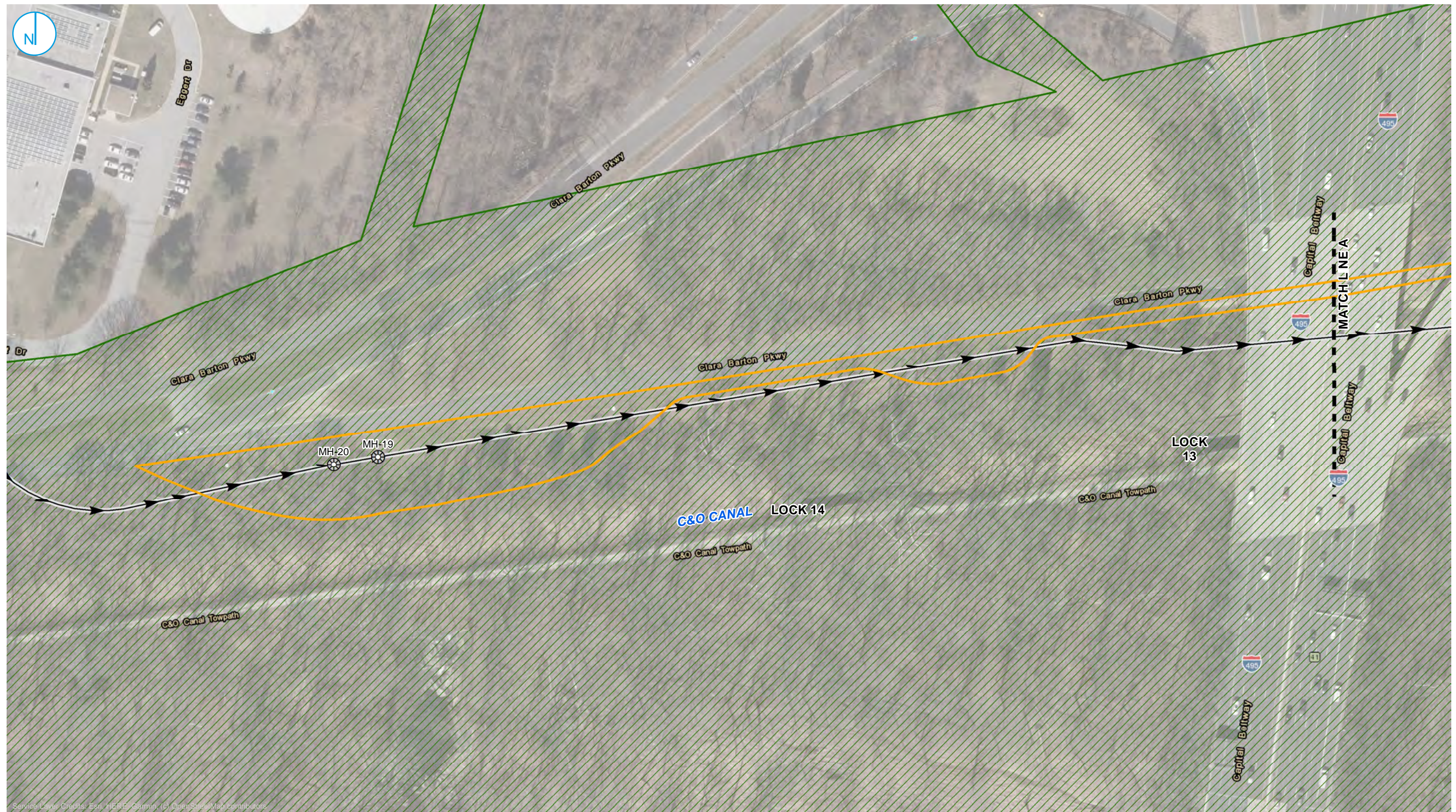
0 1,000 2,000 Feet

SEGMENT LOCATIONS PUBLIC SCOPING ANNOUNCEMENT

**DISTRICT OF COLUMBIA WATER AND
SEWER AUTHORITY**
CHESAPEAKE AND OHIO CANAL NATIONAL
HISTORIC PARK AND GEORGE WASHINGTON
MEMORIAL PARKWAY, MARYLAND AND DISTRICT OF
COLUMBIA

FIGURE 01

C:\Users\kaufmadh\OneDrive - Ramboll\Desktop\DC_Water\MXD\PublicScoping\DC_Water_Figure2_ExistingFeatures_LZ09.mxd
PROJECT: 1940074088 | DATED: 3/30/2022 | DESIGNER: KAUFMADR



- MANHOLE
- POTOMAC INTERCEPTOR
- PROPERTY UNDER NATIONAL PARK SERVICE JURISDICTION
- PROJECT BOUNDARY

0 50 100 Feet

EXISTING FEATURES AND PROJECT BOUNDARY: LZ09 PUBLIC SCOPING ANNOUNCEMENT

DISTRICT OF COLUMBIA WATER AND SEWER AUTHORITY
CHESAPEAKE AND OHIO CANAL NATIONAL HISTORIC PARK AND GEORGE
WASHINGTON MEMORIAL PARKWAY, MARYLAND AND DISTRICT OF COLUMBIA

FIGURE 02-A

RAMBOLL AMERICAS
ENGINEERING SOLUTIONS, INC.
A RAMBOLL COMPANY





- MANHOLE
- POTOMAC INTERCEPTOR
- PROPERTY UNDER NATIONAL PARK SERVICE JURISDICTION
- PROJECT BOUNDARY

0 40 80 Feet

EXISTING FEATURES AND PROJECT BOUNDARY: LZ09 PUBLIC SCOPING ANNOUNCEMENT

DISTRICT OF COLUMBIA WATER AND SEWER AUTHORITY
CHESAPEAKE AND OHIO CANAL NATIONAL HISTORIC PARK AND GEORGE
WASHINGTON MEMORIAL PARKWAY, MARYLAND AND DISTRICT OF COLUMBIA

FIGURE 02-B

RAMBOLL AMERICAS
ENGINEERING SOLUTIONS, INC.
A RAMBOLL COMPANY



C:\Users\kaufmadh\OneDrive - Ramboll\Desktop\DC_Water\MXD\PublicScoping\DC_Water_Figure2_ExistingFeatures_LZ09.mxd
PROJECT: 1940074088 | DATED: 3/30/2022 | DESIGNER: KAUFMADR



MANHOLE

POTOMAC INTERCEPTOR

PROPERTY UNDER NATIONAL PARK SERVICE JURISDICTION

PROJECT BOUNDARY

0 40 80 Feet

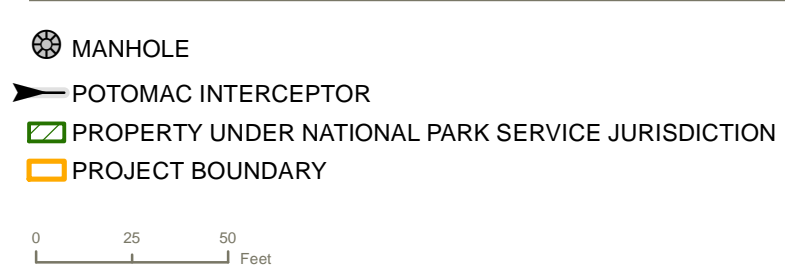
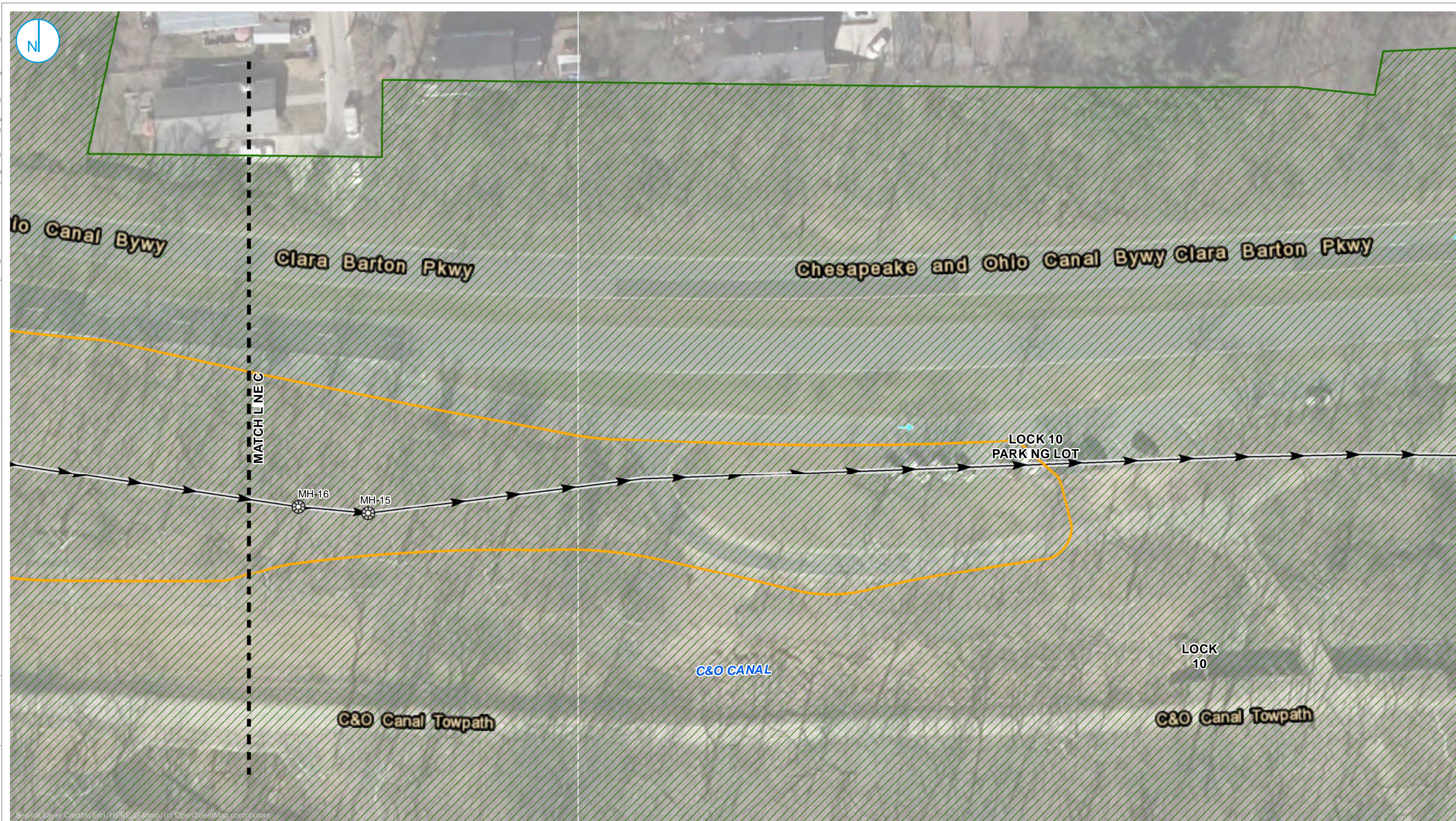
EXISTING FEATURES AND PROJECT BOUNDARY: LZ09
PUBLIC SCOPING ANNOUNCEMENT

DISTRICT OF COLUMBIA WATER AND SEWER AUTHORITY
CHESAPEAKE AND OHIO CANAL NATIONAL HISTORIC PARK AND GEORGE
WASHINGTON MEMORIAL PARKWAY, MARYLAND AND DISTRICT OF COLUMBIA

FIGURE 02-C

RAMBOLL AMERICAS
ENGINEERING SOLUTIONS, INC.
A RAMBOLL COMPANY

dc
water is life



EXISTING FEATURES AND PROJECT BOUNDARY: LZ09
PUBLIC SCOPING ANNOUNCEMENT

DISTRICT OF COLUMBIA WATER AND SEWER AUTHORITY
CHESAPEAKE AND OHIO CANAL NATIONAL HISTORIC PARK AND GEORGE
WASHINGTON MEMORIAL PARKWAY, MARYLAND AND DISTRICT OF COLUMBIA


FIGURE 02-D



 MANHOLE

 POTOMAC INTERCEPTOR

 PROPERTY UNDER NATIONAL PARK SERVICE JURISDICTION

 PROJECT BOUNDARY

050100

Feet

EXISTING FEATURES AND PROJECT BOUNDARY: LZ03B
PUBLIC SCOPING ANNOUNCEMENT

DISTRICT OF COLUMBIA WATER AND SEWER AUTHORITY
CHESAPEAKE AND OHIO CANAL NATIONAL HISTORIC PARK AND GEORGE
WASHINGTON MEMORIAL PARKWAY, MARYLAND AND DISTRICT OF COLUMBIA

FIGURE 03-A

RAMBOLL AMERICAS
ENGINEERING SOLUTIONS, INC.
A RAMBOLL COMPANY





- MANHOLE
- POTOMAC INTERCEPTOR
- PROPERTY UNDER NATIONAL PARK SERVICE JURISDICTION
- PROJECT BOUNDARY

0 50 100 Feet

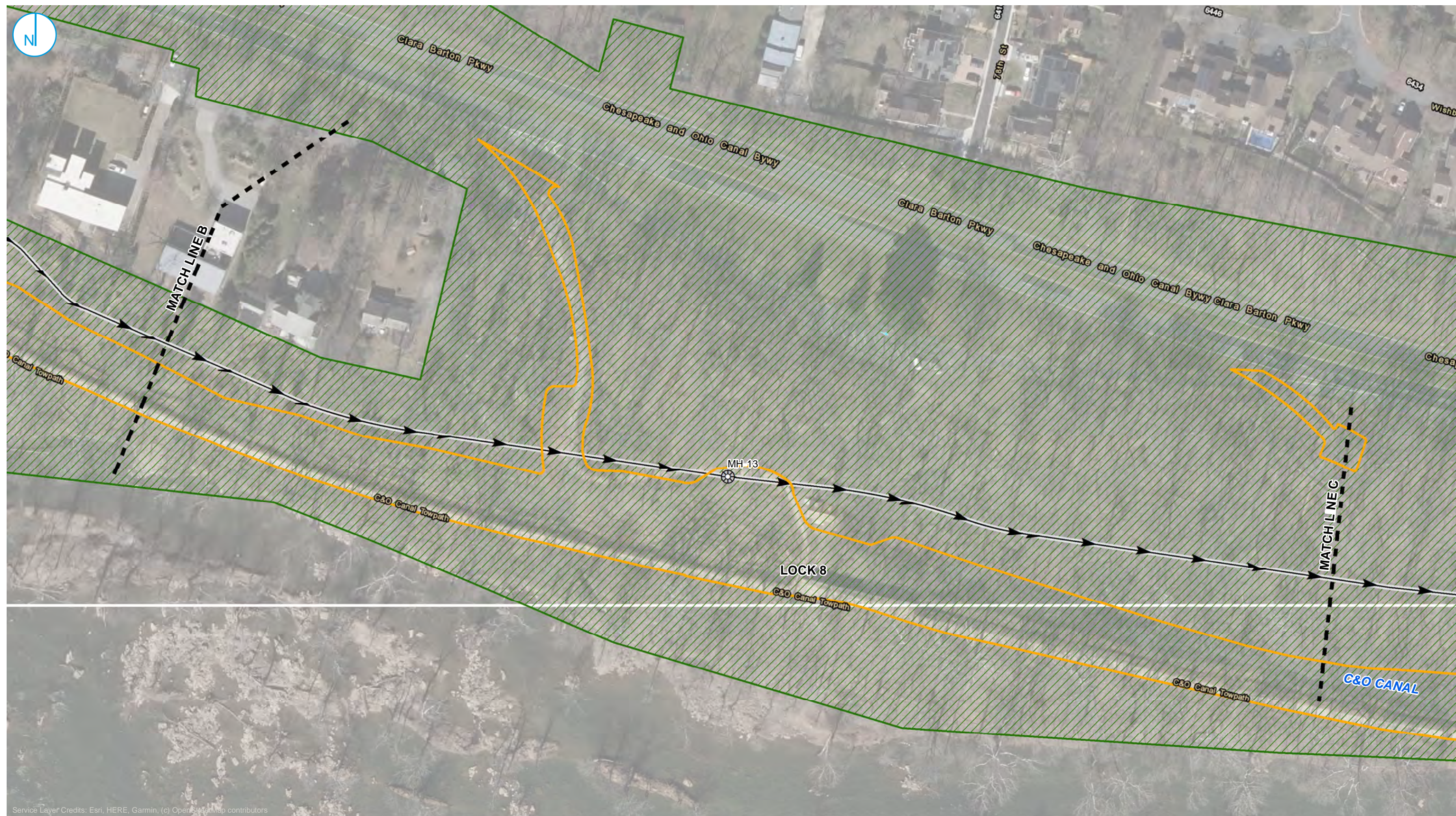
EXISTING FEATURES AND PROJECT BOUNDARY: LZ03B PUBLIC SCOPING ANNOUNCEMENT

DISTRICT OF COLUMBIA WATER AND SEWER AUTHORITY
CHESAPEAKE AND OHIO CANAL NATIONAL HISTORIC PARK AND GEORGE
WASHINGTON MEMORIAL PARKWAY, MARYLAND AND DISTRICT OF COLUMBIA

FIGURE 03-B

RAMBOLL AMERICAS
ENGINEERING SOLUTIONS, INC.
A RAMBOLL COMPANY





- MANHOLE
- POTOMAC INTERCEPTOR
- PROPERTY UNDER NATIONAL PARK SERVICE JURISDICTION
- PROJECT BOUNDARY

0 50 100 Feet

EXISTING FEATURES AND PROJECT BOUNDARY: LZ03B PUBLIC SCOPING ANNOUNCEMENT

DISTRICT OF COLUMBIA WATER AND SEWER AUTHORITY
CHESAPEAKE AND OHIO CANAL NATIONAL HISTORIC PARK AND GEORGE
WASHINGTON MEMORIAL PARKWAY, MARYLAND AND DISTRICT OF COLUMBIA

FIGURE 03-C

RAMBOLL AMERICAS
ENGINEERING SOLUTIONS, INC.
A RAMBOLL COMPANY





- MANHOLE
- POTOMAC INTERCEPTOR
- PROPERTY UNDER NATIONAL PARK SERVICE JURISDICTION
- PROJECT BOUNDARY

0 40 80 Feet

EXISTING FEATURES AND PROJECT BOUNDARY: LZ03B PUBLIC SCOPING ANNOUNCEMENT

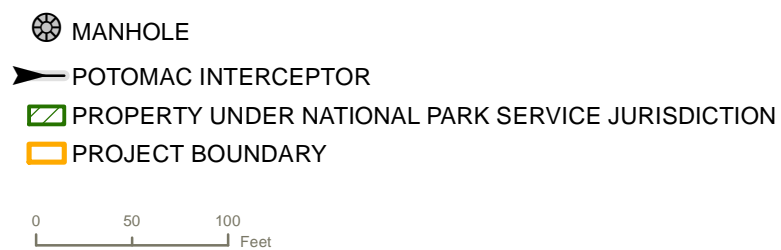
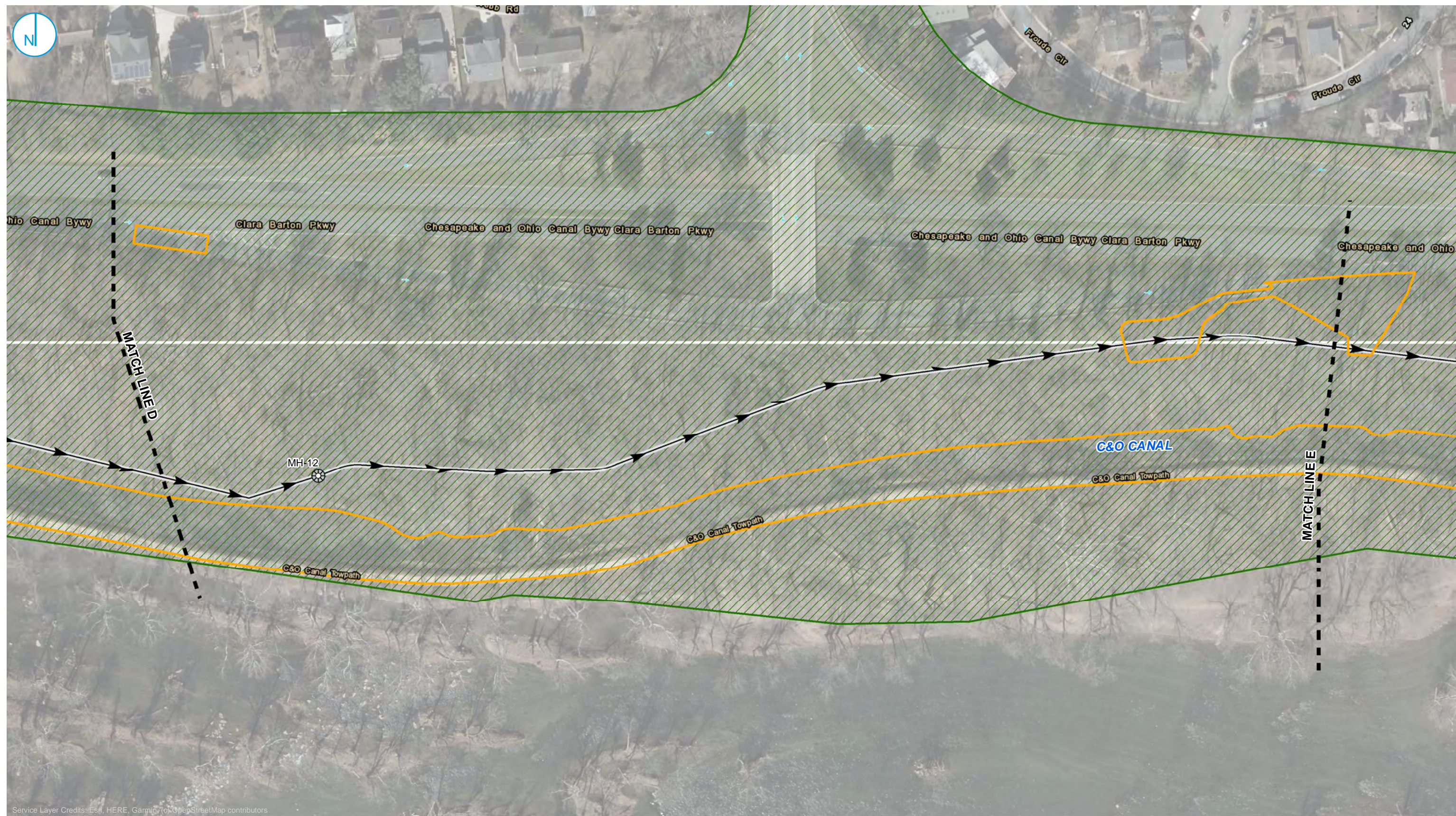
DISTRICT OF COLUMBIA WATER AND SEWER AUTHORITY
CHESAPEAKE AND OHIO CANAL NATIONAL HISTORIC PARK AND GEORGE
WASHINGTON MEMORIAL PARKWAY, MARYLAND AND DISTRICT OF COLUMBIA

FIGURE 03-D

RAMBOLL AMERICAS
ENGINEERING SOLUTIONS, INC.
A RAMBOLL COMPANY



C:\Users\kaufmadr\OneDrive - Ramboll\Desktop\DC_Water\MXD\PublicScoping\DC_Water_Figure3_ExistingFeatures_LZ03B.mxd
PROJECT: 1940074088 | DATED: 3/30/2022 | DESIGNER: KAUFMADR



EXISTING FEATURES AND PROJECT BOUNDARY: LZ03B
PUBLIC SCOPING ANNOUNCEMENT

DISTRICT OF COLUMBIA WATER AND SEWER AUTHORITY
CHESAPEAKE AND OHIO CANAL NATIONAL HISTORIC PARK AND GEORGE
WASHINGTON MEMORIAL PARKWAY, MARYLAND AND DISTRICT OF COLUMBIA

FIGURE 03-E



- MANHOLE
- POTOMAC INTERCEPTOR
- PROPERTY UNDER NATIONAL PARK SERVICE JURISDICTION
- PROJECT BOUNDARY

0 40 80 Feet

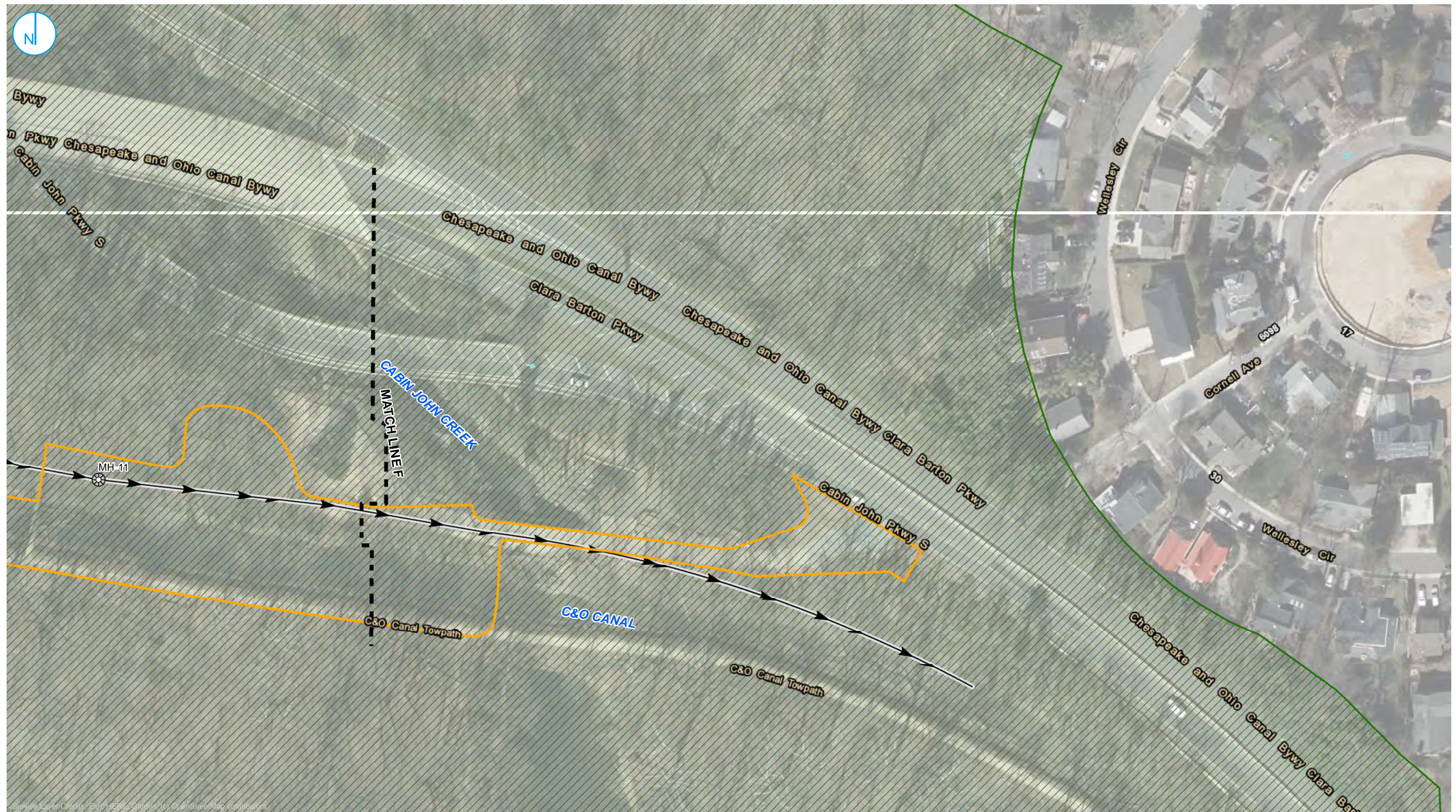
EXISTING FEATURES AND PROJECT BOUNDARY: LZ03B PUBLIC SCOPING ANNOUNCEMENT

DISTRICT OF COLUMBIA WATER AND SEWER AUTHORITY
CHESAPEAKE AND OHIO CANAL NATIONAL HISTORIC PARK AND GEORGE
WASHINGTON MEMORIAL PARKWAY, MARYLAND AND DISTRICT OF COLUMBIA

FIGURE 03-F

RAMBOLL AMERICAS
ENGINEERING SOLUTIONS, INC.
A RAMBOLL COMPANY





- MANHOLE
- POTOMAC INTERCEPTOR
- PROPERTY UNDER NATIONAL PARK SERVICE JURISDICTION
- PROJECT BOUNDARY

0 40 80 Feet

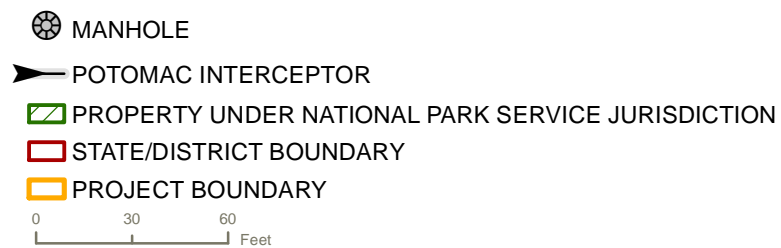
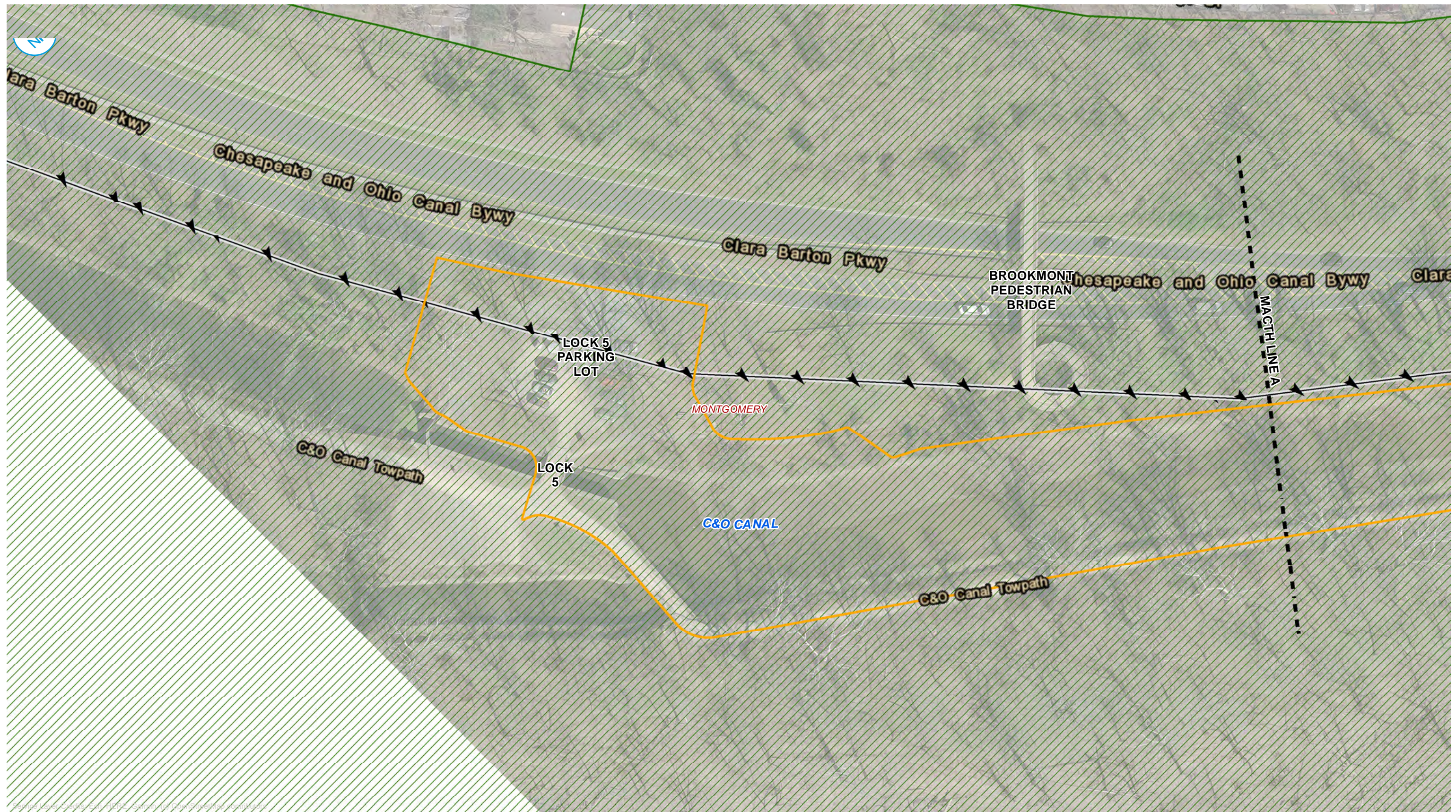
EXISTING FEATURES AND PROJECT BOUNDARY: LZ03B PUBLIC SCOPING ANNOUNCEMENT

DISTRICT OF COLUMBIA WATER AND SEWER AUTHORITY
CHESAPEAKE AND OHIO CANAL NATIONAL HISTORIC PARK AND GEORGE
WASHINGTON MEMORIAL PARKWAY, MARYLAND AND DISTRICT OF COLUMBIA

FIGURE 03-G

RAMBOLL AMERICAS
ENGINEERING SOLUTIONS, INC.
A RAMBOLL COMPANY





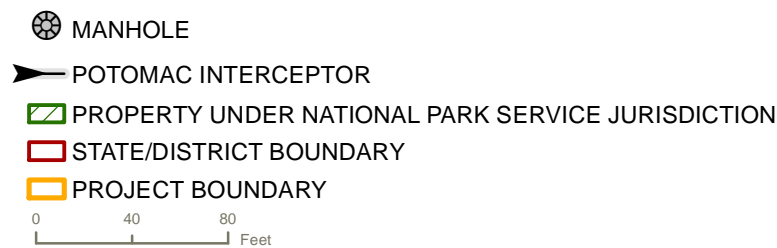
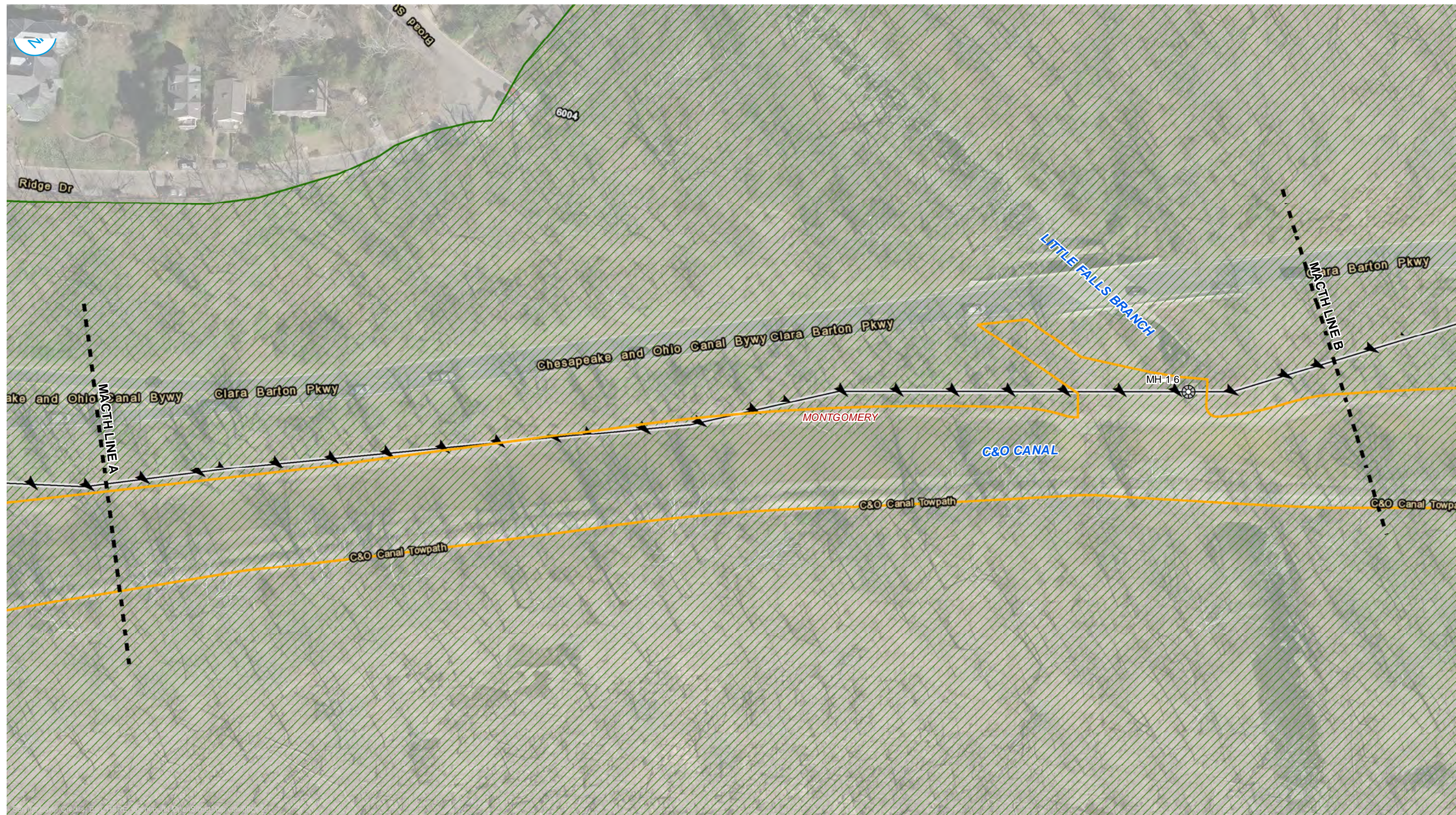
EXISTING FEATURES AND PROJECT BOUNDARY: LZ03C PUBLIC SCOPING ANNOUNCEMENT

DISTRICT OF COLUMBIA WATER AND SEWER AUTHORITY
CHESAPEAKE AND OHIO CANAL NATIONAL HISTORIC PARK AND GEORGE
WASHINGTON MEMORIAL PARKWAY, MARYLAND AND DISTRICT OF COLUMBIA

FIGURE 04-A

RAMBOLL AMERICAS
ENGINEERING SOLUTIONS, INC.
A RAMBOLL COMPANY

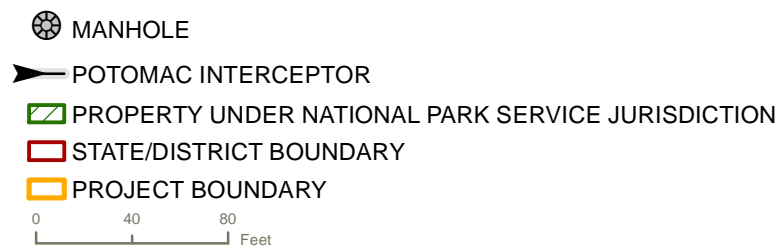
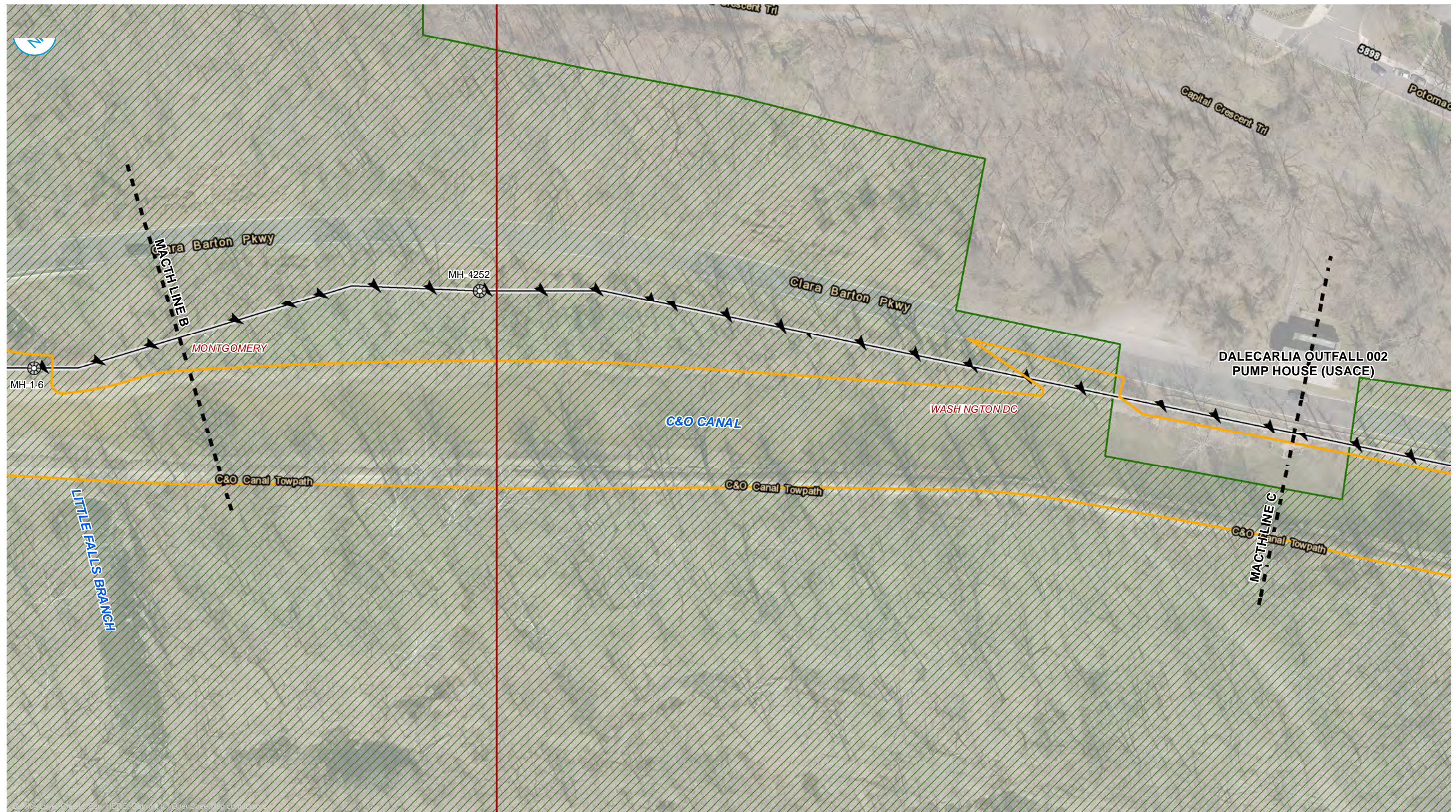




EXISTING FEATURES AND PROJECT BOUNDARY: LZ03C PUBLIC SCOPING ANNOUNCEMENT

DISTRICT OF COLUMBIA WATER AND SEWER AUTHORITY
CHESAPEAKE AND OHIO CANAL NATIONAL HISTORIC PARK AND GEORGE
WASHINGTON MEMORIAL PARKWAY, MARYLAND AND DISTRICT OF COLUMBIA

FIGURE 04-B



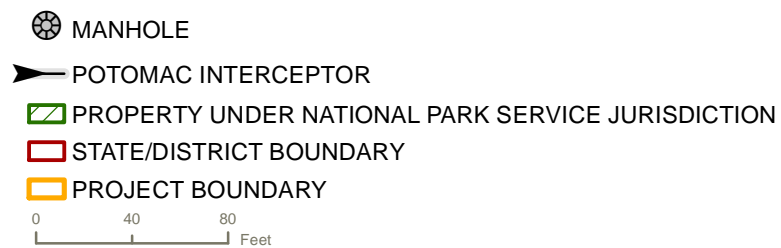
EXISTING FEATURES AND PROJECT BOUNDARY: LZ03C
PUBLIC SCOPING ANNOUNCEMENT

DISTRICT OF COLUMBIA WATER AND SEWER AUTHORITY
CHESAPEAKE AND OHIO CANAL NATIONAL HISTORIC PARK AND GEORGE
WASHINGTON MEMORIAL PARKWAY, MARYLAND AND DISTRICT OF COLUMBIA

FIGURE 04-C

RAMBOLL AMERICAS
ENGINEERING SOLUTIONS, INC.
A RAMBOLL COMPANY





EXISTING FEATURES AND PROJECT BOUNDARY: LZ03C PUBLIC SCOPING ANNOUNCEMENT

DISTRICT OF COLUMBIA WATER AND SEWER AUTHORITY
CHESAPEAKE AND OHIO CANAL NATIONAL HISTORIC PARK AND GEORGE
WASHINGTON MEMORIAL PARKWAY, MARYLAND AND DISTRICT OF COLUMBIA

FIGURE 04-D