



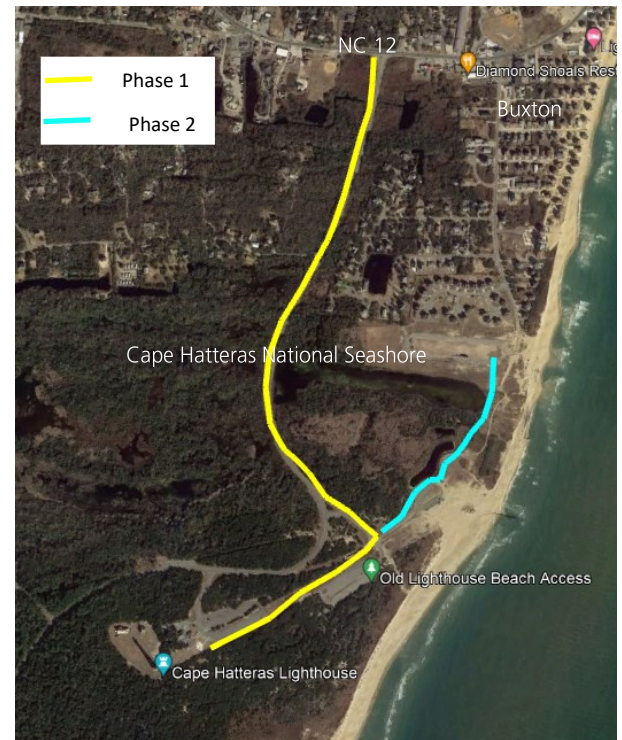
Construct Multi-Use Pathway along Lighthouse Road Public Scoping Newsletter

May 2022



Cape Hatteras National Seashore (the Seashore) would like to hear your input as we develop plans to construct a multi-use path along Lighthouse Road in the Cape Hatteras Lighthouse District. Connectivity in and near the Seashore is an important component of the park's purpose to provide access and opportunities for the benefit and enjoyment of visitors. Lighthouse Road provides access from North Carolina Highway 12 (NC12) and the village of Buxton to popular visitor use areas within this park district.

A new pathway would provide users originating in the village of Buxton with a resilient, safe, and accessible non-motorized route to many of the Park's key visitor use areas including the Cape Hatteras Lighthouse and Visitor Center and museum, Old Lighthouse parking and beach area. This pathway would also be enhanced with wayfinding, interpretive messaging, and benches.



Please Join Us for a Public Meeting

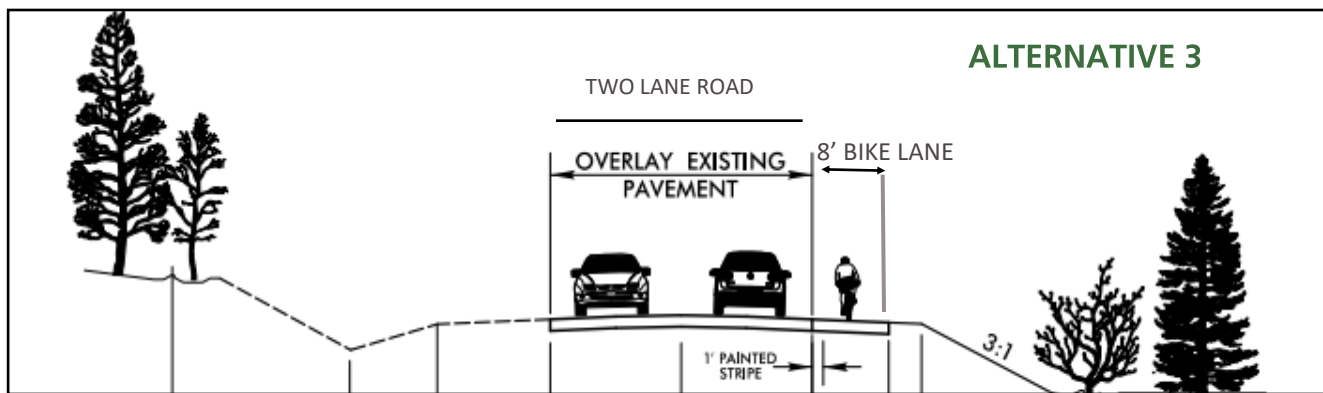
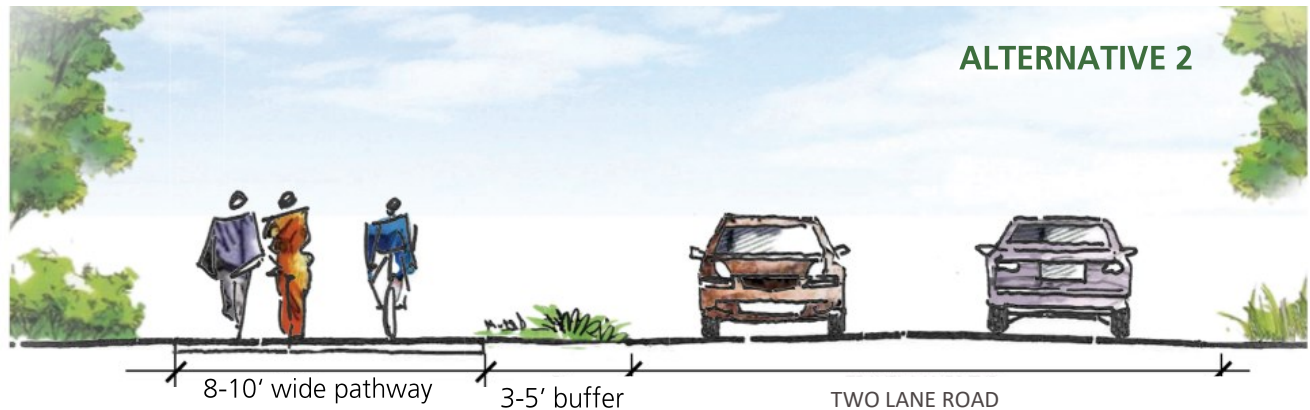
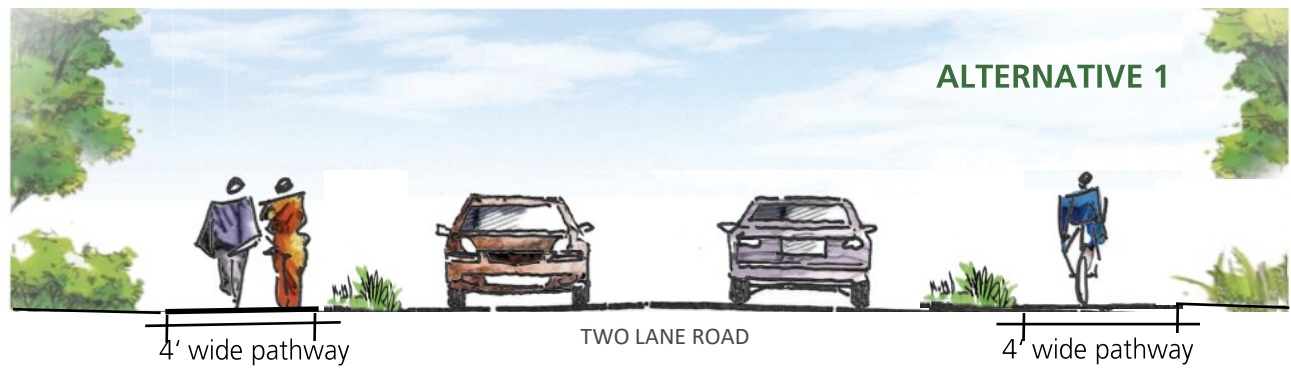
Please join us to learn more about this project and the potential designs for a new multi-use pathway. You are invited to attend a public meeting to hear more about this project. Seashore staff will present information on the proposed project, with an opportunity to ask questions following the presentation.

In-person Meeting:

Date: June 02, 2022

Time: 5:30 -6:30 pm

Location: Fessenden Center Annex
47013 Buxton Back Road
Buxton, NC 27920



Preliminary Alternatives

Alternative 1: Construction of a 4' wide path on each side of Lighthouse Road as approved in the 1984 General Management Plan.

Alternative 2: Construction of a separated 8-10' wide multi-use pathway with a 3-5' vegetative buffer parallel to Lighthouse Road.

Alternative 3: Expand Lighthouse Road to create an 8' wide bicycle lane on the existing road from NC12 only to the Cape Hatteras Lighthouse and Old Lighthouse parking area. There would be no vegetative buffer.

How to Comment

Public participation is an important element of the planning process, and we welcome your ideas, concerns, suggestions, and potential topics for consideration.

Please share your comments no later than June 22, 2022 online at https://parkplanning.nps.gov/CAHA_multiuse_pathway or mail your comments to:

Superintendent
1401 National Park Drive
Manteo, NC 27954

You should be aware that your entire comment, including your personal identifying information, may be made publicly available at any time. You may request that the NPS withhold your name and/or address from public disclosure. If you wish to do this, you must state this prominently at the beginning of your comment and make such a request by checking the box "keep my contact information private" on the website. The NPS will honor such requests to the extent allowable by law, but individuals should be aware that the NPS may still be required to disclose personal identifying information.