

## **EXISTING CONDITIONS PHOTOGRAPHS**

---



*Exterior 1. The west elevation of the Theodore Roosevelt Home. [JGWA, 2008]*



*Exterior 2. The south elevation of the Theodore Roosevelt Home. [JGWA, 2008]*



*Exterior 3. The north side of the Theodore Roosevelt Home, with the 1905 Trophy Room addition on the right. [JGWA, 2008]*



*Exterior 4. The west elevation of the 1905 Trophy Room addition; the spalling of the bluestone water table is visible from this distance. The roof shingles in this area are showing signs of curling. [JGWA, 2008]*



*Exterior 5. Open mortar joints in the foundation wall in the southeast corner of the Theodore Roosevelt Home. [JGWA, 2008]*



*Exterior 6. Spalling bluestone water table and open mortar joints on the northwest corner of the 1905 Trophy Room addition. [JGWA, 2008]*



*Exterior 7. The lower section of the northeast corner of the 1905 Trophy Room addition. Note the rain-scoured grass, exposed soil, active biological growth and spalling bluestone water table. [JGWA, 2008]*



*Exterior 8. The wooden bulkhead over the stairs to the basement. Note the algae growth on masonry surfaces. [JGWA, 2008]*



*Exterior 9. A closer view of the basement bulkhead. Note the stained masonry surfaces, open mortar joints, and deteriorated downspout. The grade slopes towards the house. [MACTEC, 2008]*



*Exterior 10. The corner outside of the 1952 stairwell modification; window locations are not original to the 1885 design. Significant water infiltration problems occur at this corner inside the house. [JGWA, 2008]*



*Exterior 11. A detail of the corner where the 1905 addition meets the original house. Note the area of eroded grass and exposed soil surrounding the downspout on the right side of the photograph. [MACTEC, 2008]*



*Exterior 12. The east side of the Maid's Porch showing a downspout daylighting into a concrete drainage culvert. The brick mortar joints are open, and gaps are covered in paint. [MACTEC, 2008]*



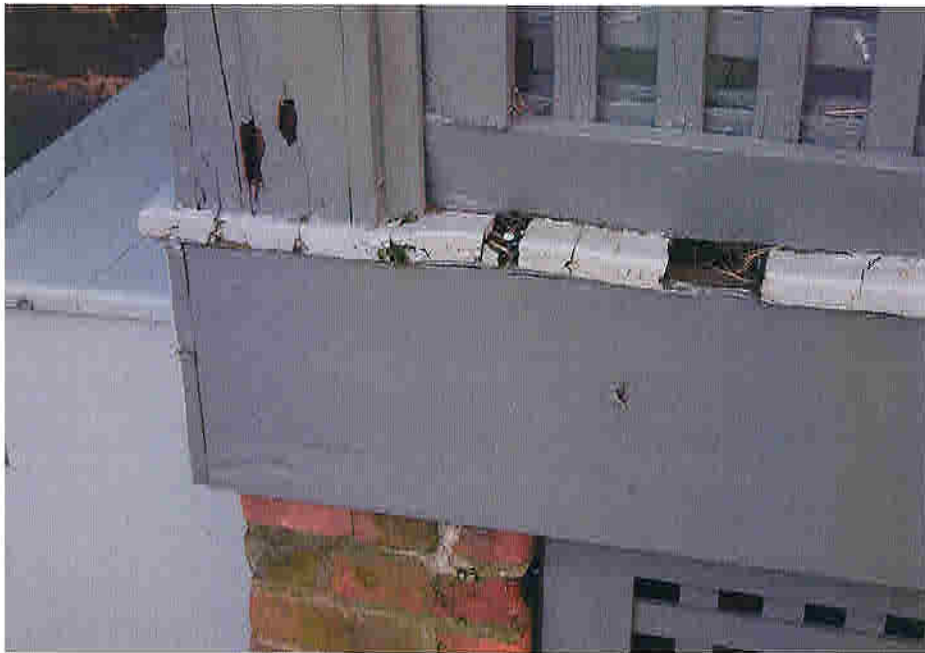
*Exterior 13. The Maid's Porch, showing active algae growth on masonry surfaces as well as the blistering paint on the brick columns. [JGWA, 2008]*



*Exterior 14. Southeast corner of the Maid's Porch, showing excessive deterioration of wood soffit. [JGWA, 2008]*



*Exterior 15. The east side of the rear entry porch. The tongue and groove decking is buckling. Significant water infiltration and rot are found in the soffit. [JGWA, 2008]*



*Exterior 16. Detail of the northeast corner of the wood-framed rear entry porch. Note the missing and rotten wood as well as the active biological growth on the brick and wood surfaces. [JGWA, 2008]*



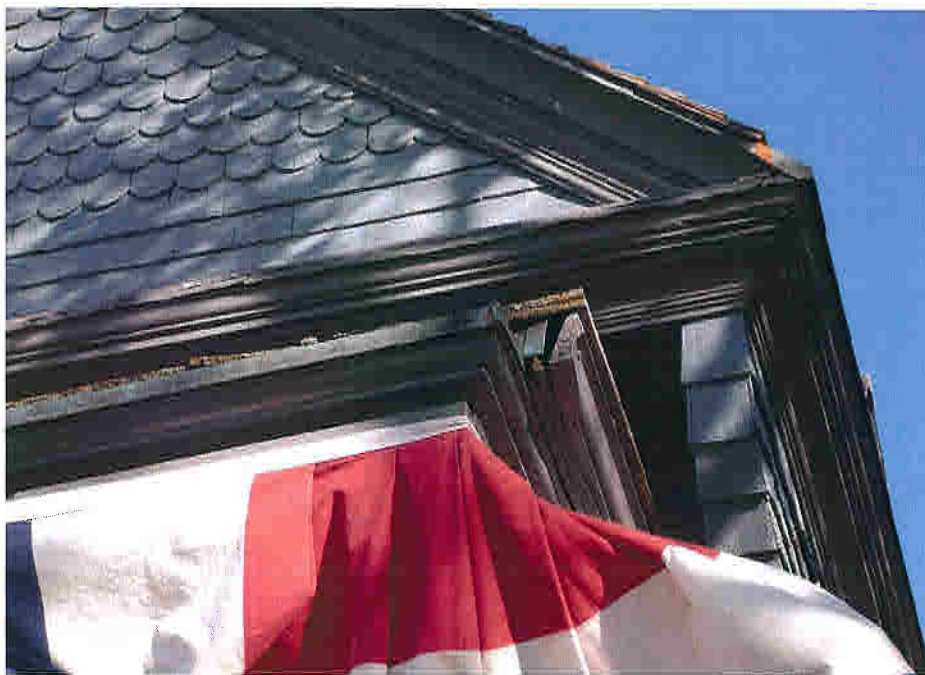
*Exterior 17. The southeast corner of the "Mounting Platform" in the Porte Cochere. Note the poor condition of the wood paneling, and the peeling and cracking paint. [JGWA, 2008]*



*Exterior 18. The 1910 cantilevered bathroom addition. Note the misalignment and separations in the wall shingles and wood trim. [JGWA, 2008]*



*Exterior 19. The wooden balcony on the second floor of the east elevation. The wooden railings are deteriorated and there is a great deal of algae growth on the roof shingles in this area. [JGWA, 2008]*



*Exterior 20. The southwestern corner of the wrap-around porch, showing open areas of trim and deteriorated roof shingles. [JGWA, 2008]*



*Exterior 21. The southwest corner of the roof, showing missing and buckling shingles and scoured copper sheet metal wash at the end of the gutter. [JGWA, 2008]*



*Exterior 22. The northwest roof over the wrap-around porch, showing the improvised plastic tube to improve drainage. Also note the algae growth on the roofing shingles. [JGWA, 2008]*



*Exterior 23. Detail of the roof off of the master bedroom balcony, showing the condition of the shingles, as well as the shallow depth of the gutters and the scouring of the copper sheet metal. [JGWA, 2008]*



*Exterior 24. The south side of the Trophy Room chimney. Note the flaking and missing paint. [JGWA, 2008]*



*Exterior 25. The ice house. [JGWA, 2008]*



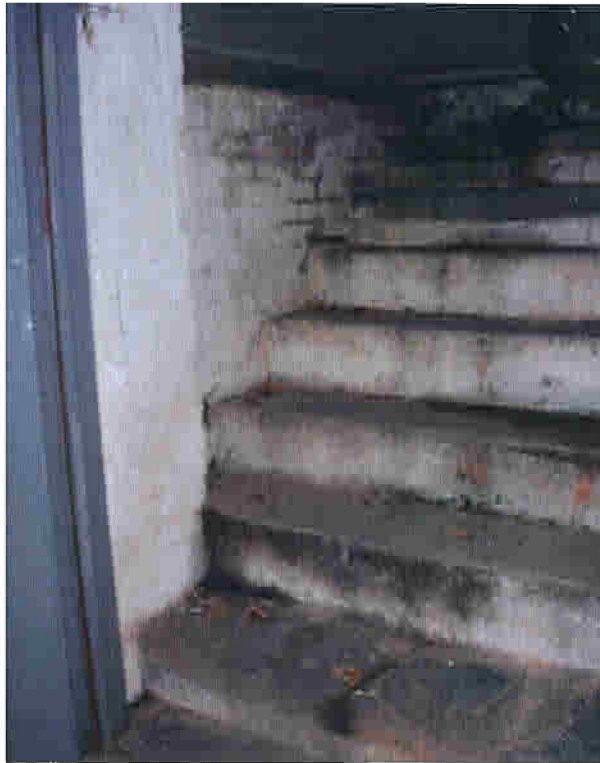
*Exterior 26. The windmill and pump house. [JGWA, 2008]*



*Interior 1. Room 001. The exterior wall in the office area of the basement. The masonry wall is covered with waterproof paint but is showing signs of water damage. Areas of paint are beginning to deteriorate and, in some areas, are flaking off. [JGWA, 2008]*



*Interior 2. Room 003, the collections storage area in the basement. Exterior masonry walls are showing evidence of water infiltration. [JGWA, 2008]*



*Interior 3. The basement access stairs into Room 007. The brick foundation walls are beginning to spall and mortar is failing. Staining is clearly evident on the poured concrete stairs, and the wooden bulkhead is beginning to rot. The metal door frame is beginning to corrode. [JGWA, 2008]*



*Interior 4. Room 010, the unexcavated crawlspace. Plastic sheeting covers the dirt floor, however there is little evidence of water infiltration problems. [JGWA, 2008]*



*Interior 5. The "Front Hall" looking towards the main stair. [JGWA, 2008]*



*Interior 6. A detail of the main stair. The weakened structure is evidenced in multiple locations by separation of the wood paneling. [JGWA, 2008]*



*Interior 7. Room 102, the "Drawing Room." Plaster cracking is visible, and the wood trim is separating from the wall around the fireplace. [JGWA, 2008]*



*Interior 8. Room 203, the "Gate Room," showing water-damaged plaster and paint peeling from the surface of the southwest wall and ceiling. [JGWA, 2008]*



*Interior 9. Room 208, the "Double Guestroom." Evidence of water infiltration, water damaged plaster and stained wallpaper around the window and under the sill. [JGWA, 2008]*



*Interior 10. Room 213, "Alice's Bedroom" closet. Extensive water damage on the northeast exterior wall and ceiling in storage area with deterioration of wallpaper and failing plaster. [JGWA, 2008]*



*Interior 11. The roof rafters in the attic. Water infiltration is evidenced by brown staining on the areas of contemporary (lighter) and original (darker) wood sheathing. [JGWA, 2008]*